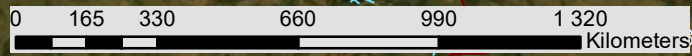
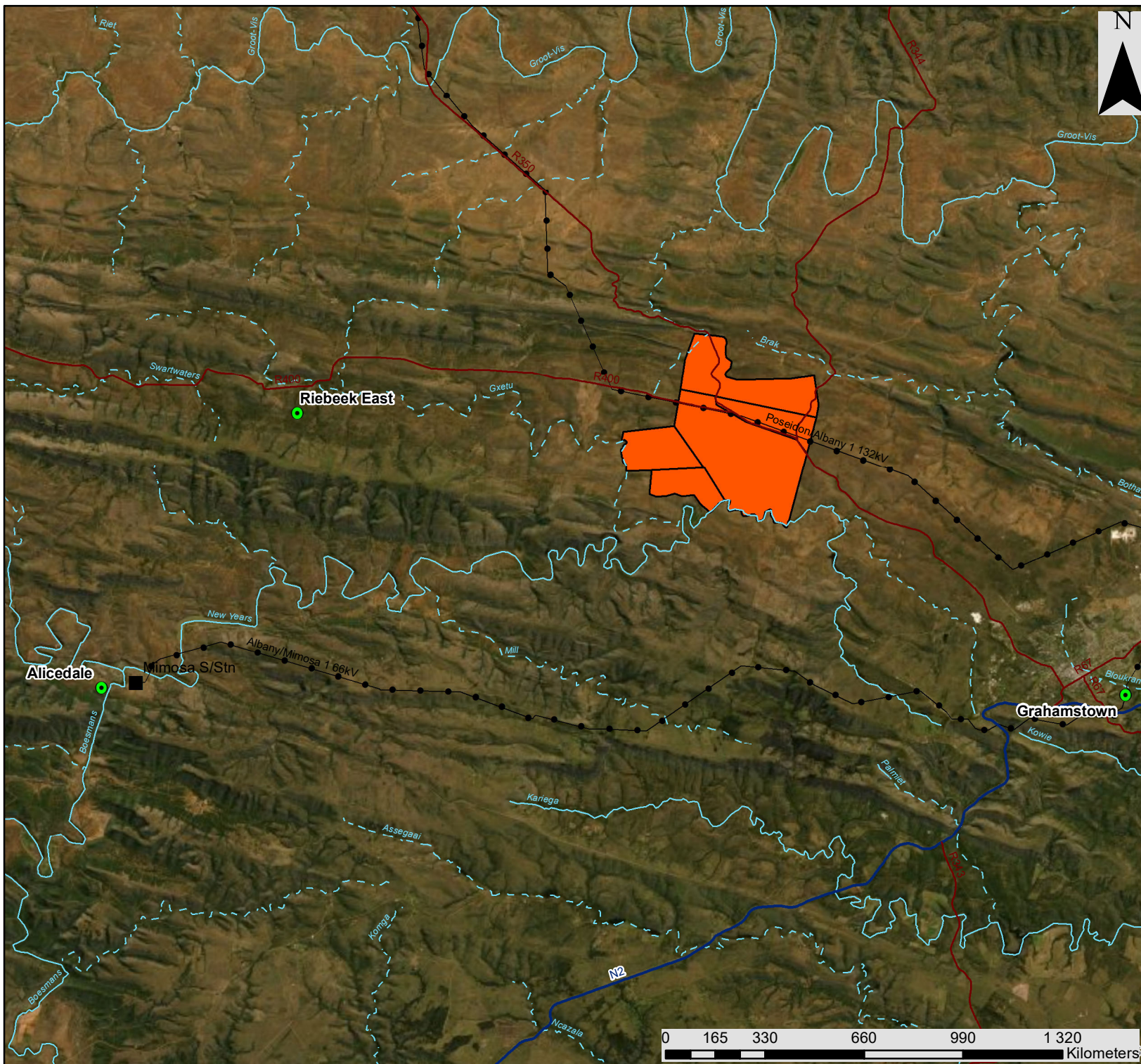


Wind Garden Wind Farm, Eastern Cape

Locality Map

Legend

- Town
- Eskom Substation (Existing)
- Eskom Power Line (Existing)
- Regional Road
- National Road
- Perennial River
- - - Non-perennial River
- Project Site



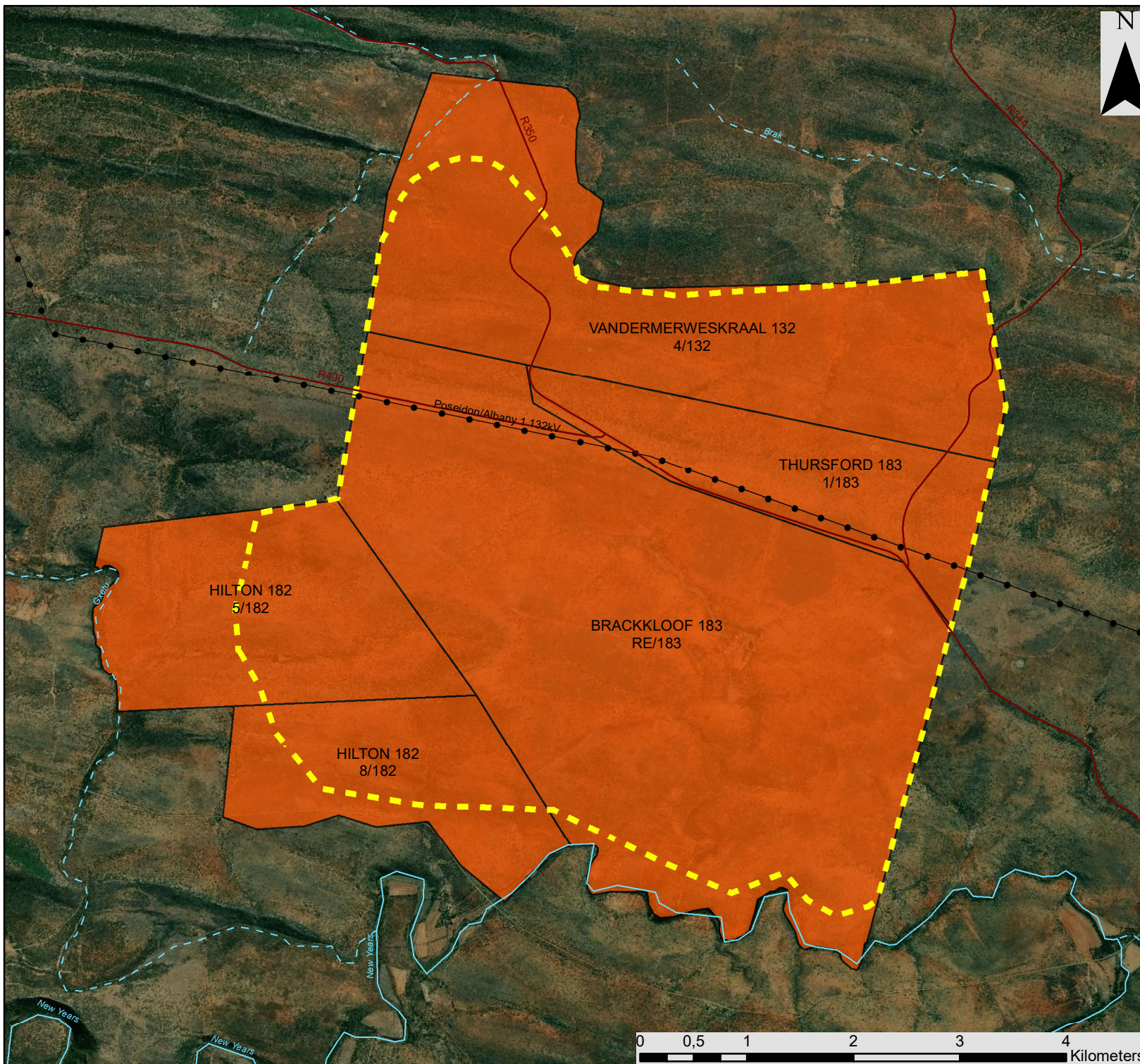
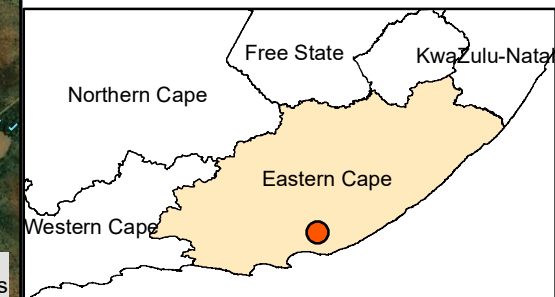
Wind Garden Wind Farm, Eastern Cape

Locality Map

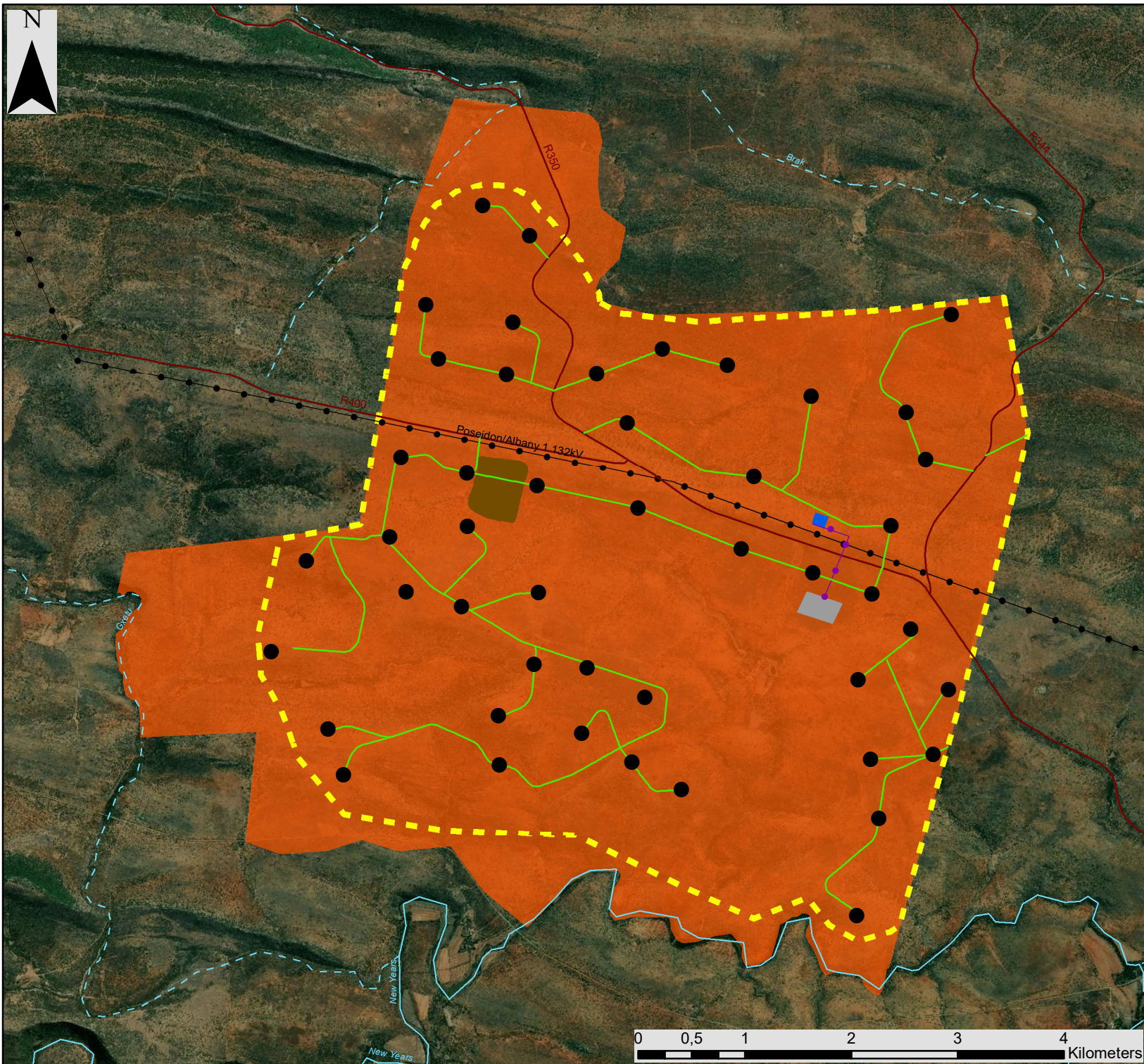
Legend

- Town
- Eskom Substation (Existing)
- Eskom Power Line (Existing)
- Regional Road
- National Road
- Perennial River
- - - Non-perennial River
- Project Site
- - - Development Envelope

savannah
environmental



0 0,5 1 2 3 4 Kilometers



Wind Garden Wind Farm, Eastern Cape

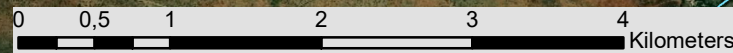
Development Footprint assessed
within the BA Process

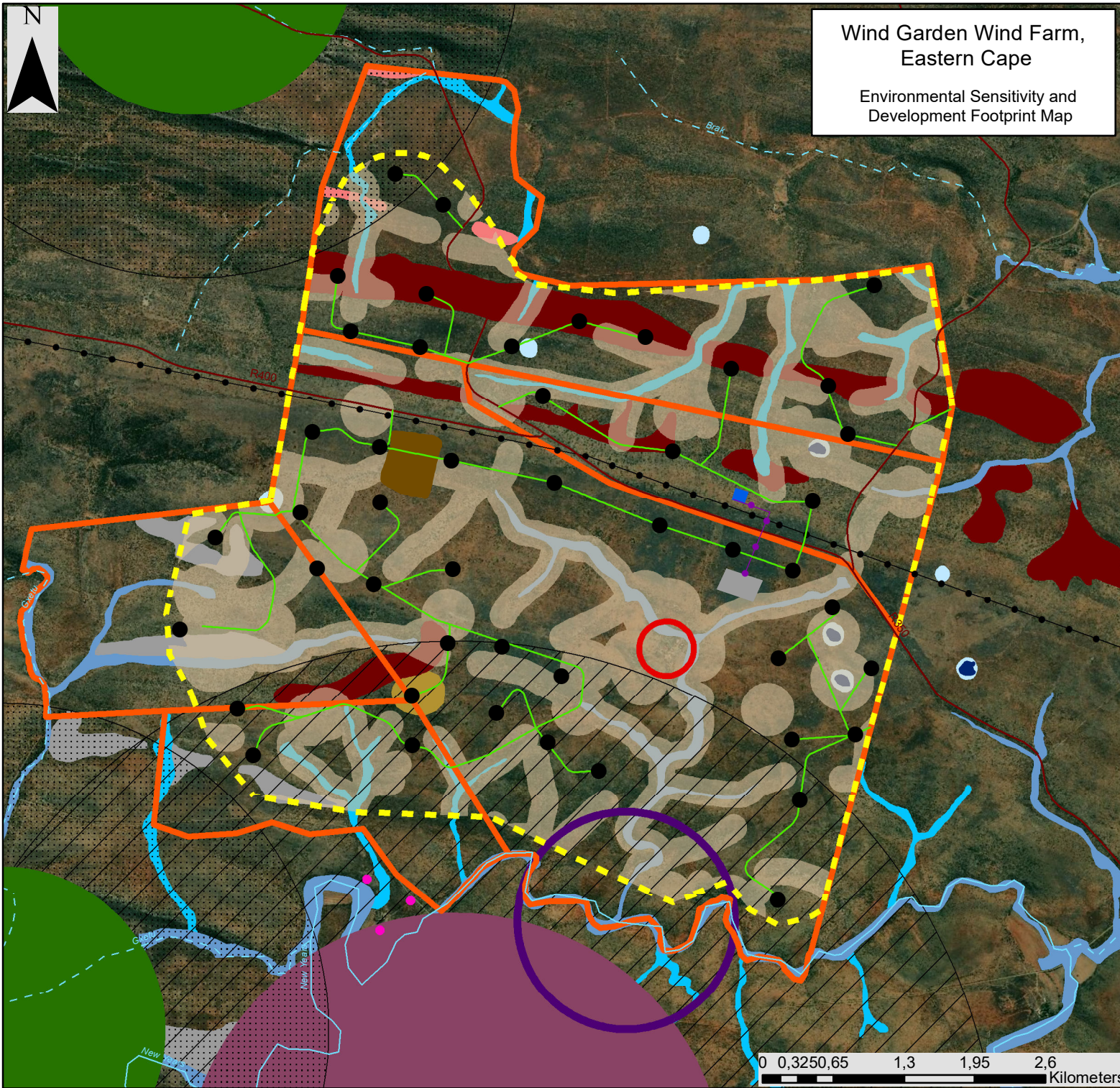
Legend

- Town
- Eskom Substation (Existing)
- Eskom Power Line (Existing)
- Regional Road
- National Road
- Perennial River
- Non-perennial River
- Project Site
- Development Envelope

Layout Plan:

- Wind Turbine
- Access Road
- Power Line
- On-site Collector Substation
- Switching Station
- Balance of Plant Area





**Wind Garden Wind Farm,
Eastern Cape**
Environmental Sensitivity and
Development Footprint Map

Legend

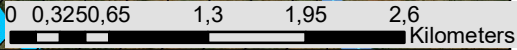
- Regional Road
- Eskom Power Line (Existing)
- Perennial River
- - - Non-perennial River
- - - Development Envelope
- ▭ Project Site

Layout Plan:

- Wind Turbine
- Access Road
- Power Line
- ▭ On-site Collector Substation
- ▭ Switching Station
- ▭ Balance of Plant Area

Environmental Sensitivity:

- Historical Structure (500m Heritage No-Go Area)
- Grave (30m Heritage No-Go Area)
- Fish Eagle Nest (1km Avifauna No-Go Area for turbines)
- Bat No-Go Areas for Turbines
- Verreaux's Eagle Nest (1.5km Avifauna No-Go Area for turbines)
- Verreaux's Eagle Nest (3km Avifauna Cautionary Buffer)
- Martial Eagle Nest (2.5km Avifauna No-Go Area for turbines)
- Martial Eagle Nest (5km Avifauna Cautionary Buffer)
- Major Drainage (Very High Ecological Sensitivity - No-Go)
- Pan (Very High Ecological Sensitivity - No-Go)
- Pan (57m High Aquatic Sensitivity No-Go Buffer)
- Minor Drainage (High Ecological Sensitivity)
- Plateau (High Ecological Sensitivity)
- Rocky Hills (High Ecological Sensitivity)
- Steep Slopes (High Ecological Sensitivity)
- Thicket (High Ecological Sensitivity)





Wind Garden Wind Farm, Eastern Cape

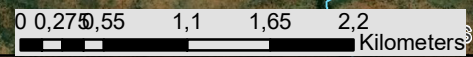
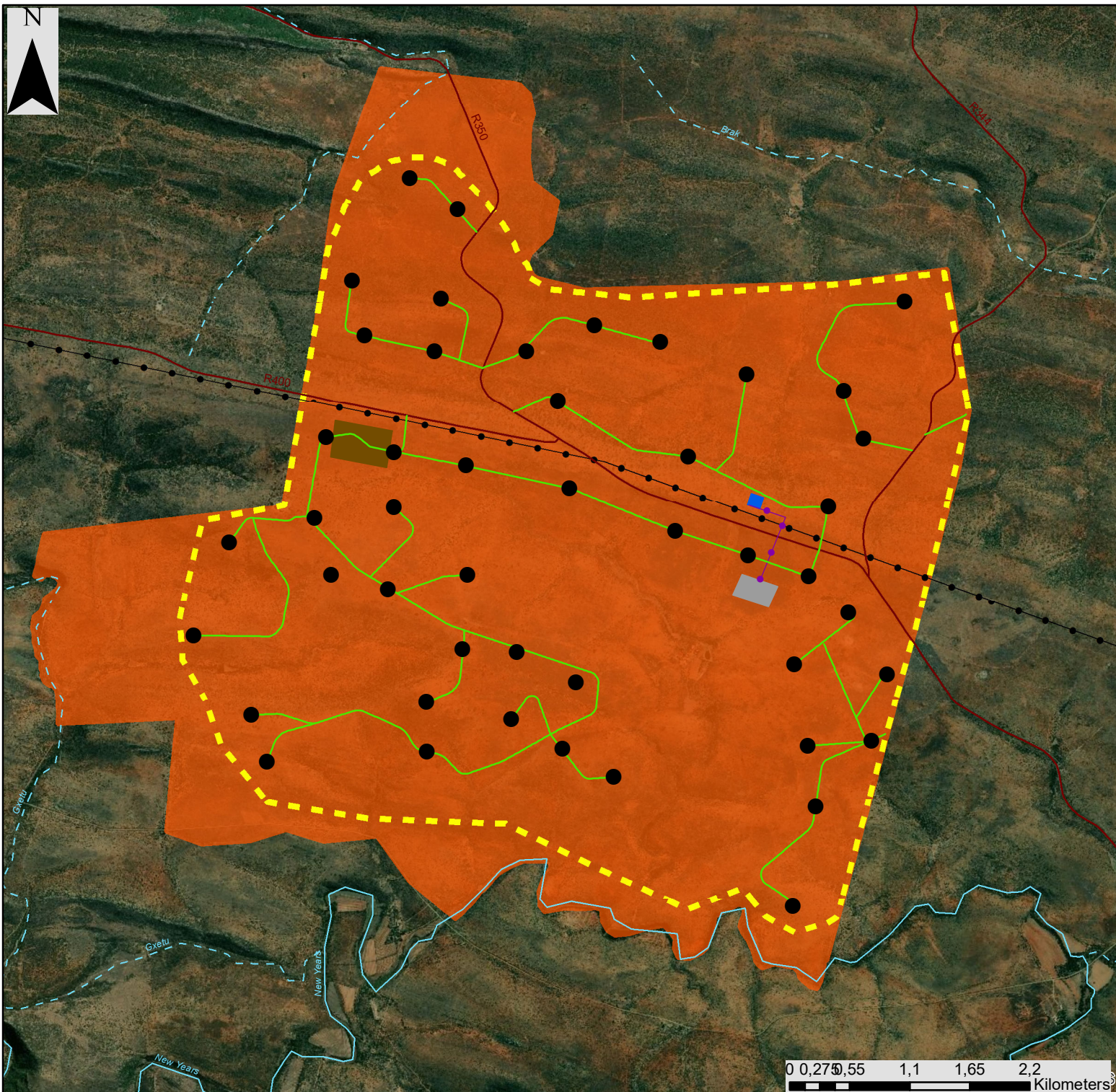
Optimised Development Footprint Map

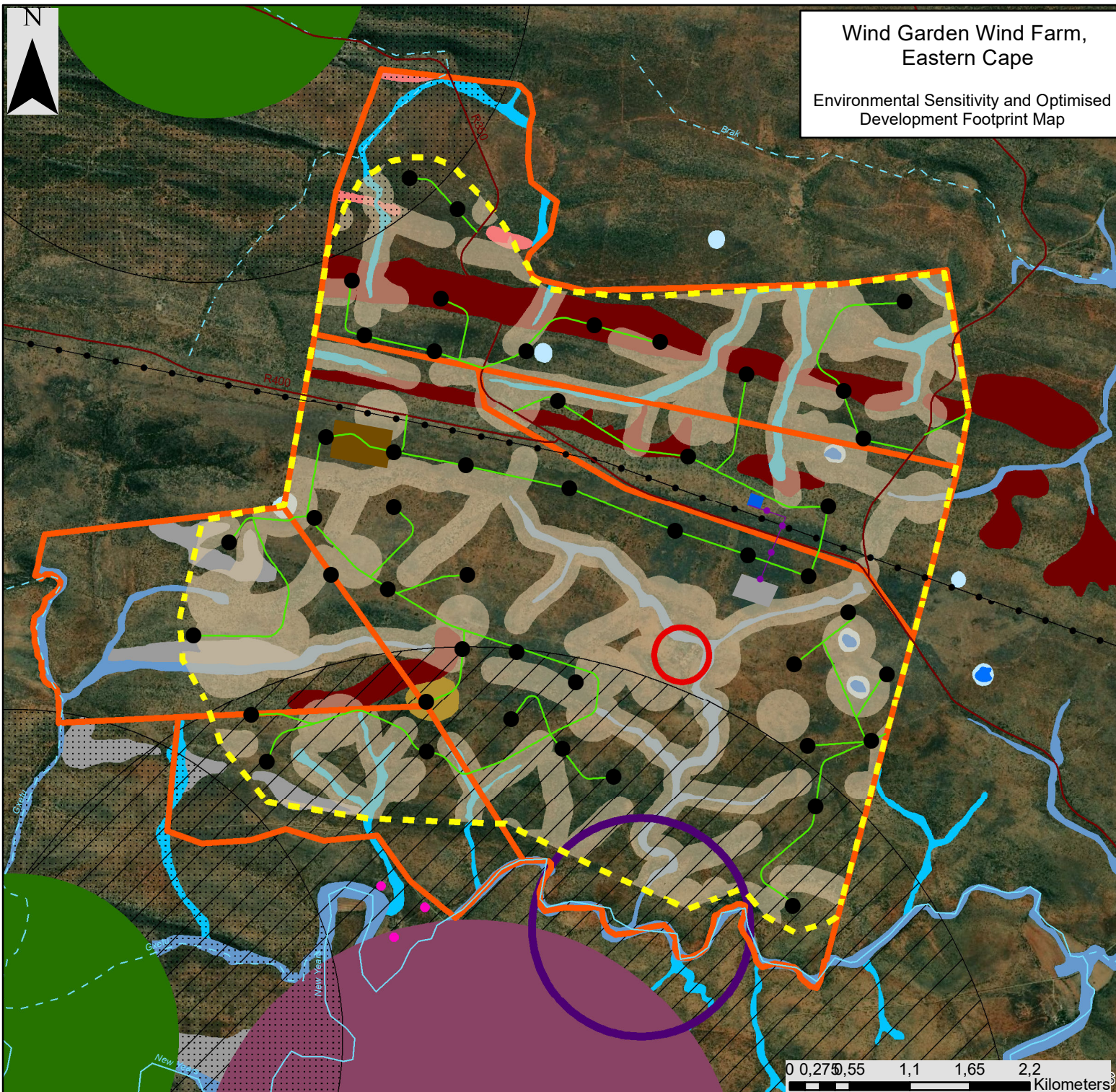
Legend

- Regional Road
- Eskom Power Line (Existing)
- Perennial River
- Non-perennial River
- Development Envelope
- Project Site

Optimised Layout Plan:

- Wind Turbine
- Access Road
- Power Line
- On-site Collector Substation
- Switching Station
- Balance of Plant





**Wind Garden Wind Farm,
Eastern Cape**
Environmental Sensitivity and Optimised
Development Footprint Map

Legend

- Regional Road
- Eskom Power Line (Existing)
- Perennial River
- Non-perennial River
- Development Envelope
- Project Site

Layout Plan:

- Wind Turbine
- Access Road
- Power Line
- On-site Collector Substation
- Switching Station
- Balance of Plant

Environmental Sensitivity:

- Historical Structure (500m Heritage No-Go Area)
- Grave (30m Heritage No-Go Area)
- Fish Eagle Nest (1km Avifauna No-Go Area for turbines)
- Verreaux's Eagle Nest (1.5km Avifauna No-Go Area for turbines)
- Verreaux's Eagle Nest (3km Avifauna Cautionary Buffer)
- Martial Eagle Nest (2.5km Avifauna No-Go Area for turbines)
- Martial Eagle Nest (5km Avifauna Cautionary Buffer)
- Bat No-Go Areas for Turbines
- Major Drainage (Very High Ecological Sensitivity - No-Go)
- Pan (Very High Ecological Sensitivity - No-Go)
- Pan (57m High Aquatic Sensitivity No-Go Buffer)
- Minor Drainage (High Ecological Sensitivity)
- Plateau (High Ecological Sensitivity)
- Rocky Hills (High Ecological Sensitivity)
- Steep Slopes (High Ecological Sensitivity)
- Thicket (High Ecological Sensitivity)

