

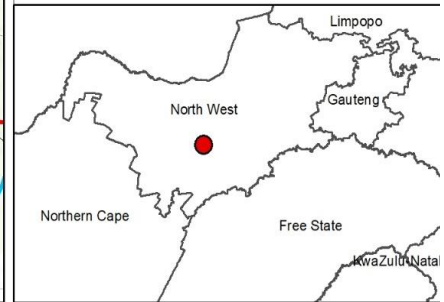
# Setaria PV Facility and Associated Infrastructure, North West Province

## Locality Map

### Legend

- Town
- Eskom Substation
- Existing Power Lines
- Non-Perennial River
- Perennial River
- Regional Road
- Main Road
- Farm Portions
- Affected Property
- Grid Connection Corridor Alternative 1 (100m wide)
- Grid Connection Corridor Alternative 2 (100m wide)
- Setaria PV Development Area

Scale: 50 000  
 Projection: LO19  
 Map Ref: Setraria Locality Map



Sources: Esri, HERE, Garmin, Intermap, increment P Corp., GEBCO, USGS, FAO, NPS, NRCAN, GeoBase, IGN, Kadaster NL, Ordnance Survey, Esri Japan, METI, Esri China (Hong Kong), (c) OpenStreetMap contributors, and the GIS User Community

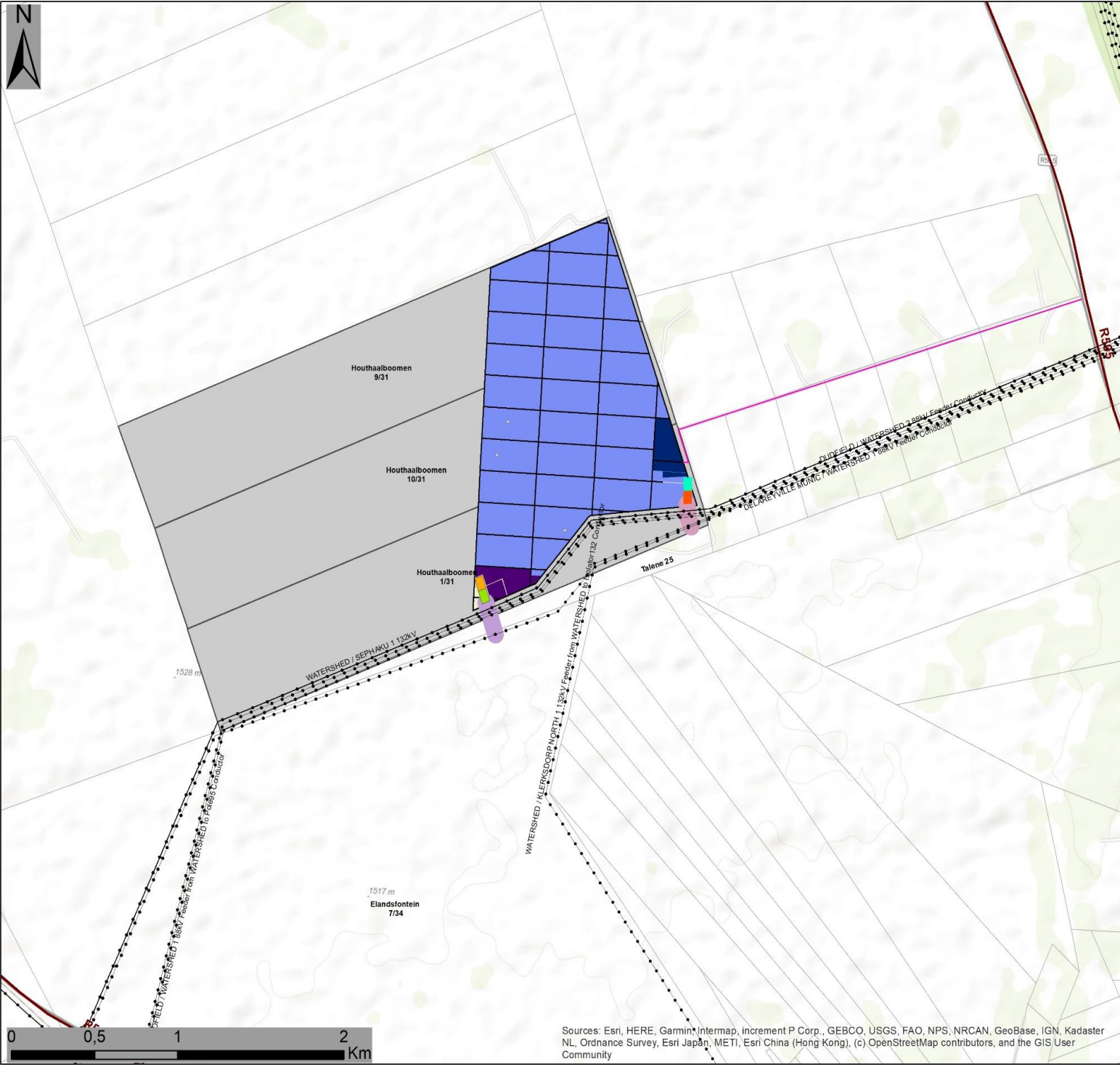


# Setaria PV Facility and Associated Infrastructure, North West Province

## Facility Layout Map

### Legend

- • • • Existing Power Lines
  - Regional Road
  - Farm Portions
  - Affected Property
- Facility Layout:**
- Existing Access Road - Provincial Road D2435 (to be upgraded)
  - Internal Road
  - PV Array
  - BESS, construction and O&M hub - Alternative
- Grid Connection Corridor Alternative 1**
- Facility Substation
  - Eskom Switching Station
  - Grid Connection Corridor (100m wide)
  - BESS, construction and O&M hub - Alternative
- Grid Connection Corridor Alternative 2**
- Facility Substation
  - Eskom Switching Station
  - Grid Connection Corridor (100m wide)



Scale: 50 000  
 Projection: LO19  
 Map Ref: Setraria Layout Map



Sources: Esri, HERE, Garmin, Intermap, increment P Corp., GEBCO, USGS, FAO, NPS, NRCAN, GeoBase, IGN, Kadaster NL, Ordnance Survey, Esri Japan, METI, Esri China (Hong Kong), (c) OpenStreetMap contributors, and the GIS User Community



# Setaria PV Facility and Associated Infrastructure, North West Province

## Facility Layout & Sensitivity Map

### Legend

--- Existing Power Lines

— Regional Road

□ Farm Portions

### Facility Layout:

— Existing Access Road - Provincial Road D2435 (to be upgraded)

— Internal Road

□ PV Array

■ BESS, construction and O&M hub - Alternative

### Grid Connection Corridor Alternative 1

■ Facility Substation

■ Eskom Switching Station

■ Grid Connection Corridor (100m wide)

■ BESS, construction and O&M hub - Alternative

### Grid Connection Corridor Alternative 2

■ Facility Substation

■ Eskom Switching Station

■ Grid Connection Corridor (100m wide)

### Environmental Sensitivities

□ Heritage Feature - Potential Burial Site (10m buffer)

□ Avifauna (Medium)

■ Ecological Sensitivity (Medium)

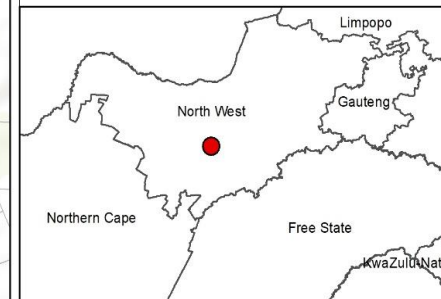
■ Ecological Sensitivity (Low Medium)

Scale: 20 000

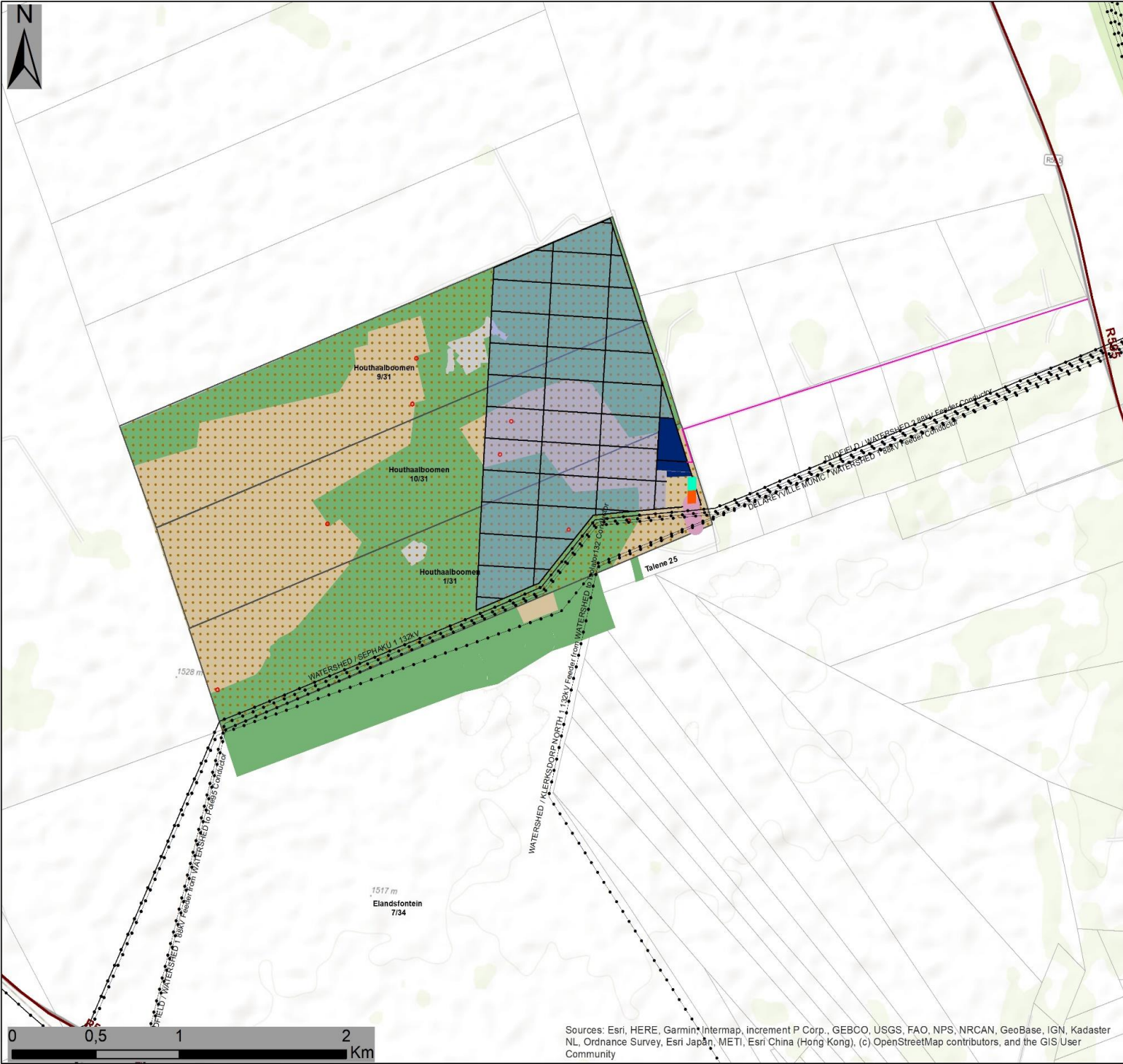
Projection: LO19

Map Ref: Setaria Layout Map

savannah  
environmental



Sources: Esri, HERE, Garmin, Intermap, increment P Corp., GEBCO, USGS, FAO, NPS, NRCAN, GeoBase, IGN, Kadaster NL, Ordnance Survey, Esri Japan, METI, Esri China (Hong Kong), (c) OpenStreetMap contributors, and the GIS User Community



# Setaria PV Facility and Associated Infrastructure, North West Province

## Preferred Facility Layout & Sensitivity Map

### Legend

- Existing Power Lines
- Regional Road
- Farm Portions
- Facility Layout:**
  - Existing Access Road - Provincial Road D2435 (to be upgraded)
  - Internal Road
  - PV
  - BESS, construction and O&M hub - Alternative 1

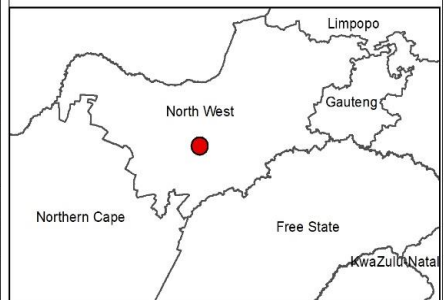
### Grid Connection Corridor Alternative

- Facility Substation
- Eskom Switching Station
- Grid Connection Corridor (100m)

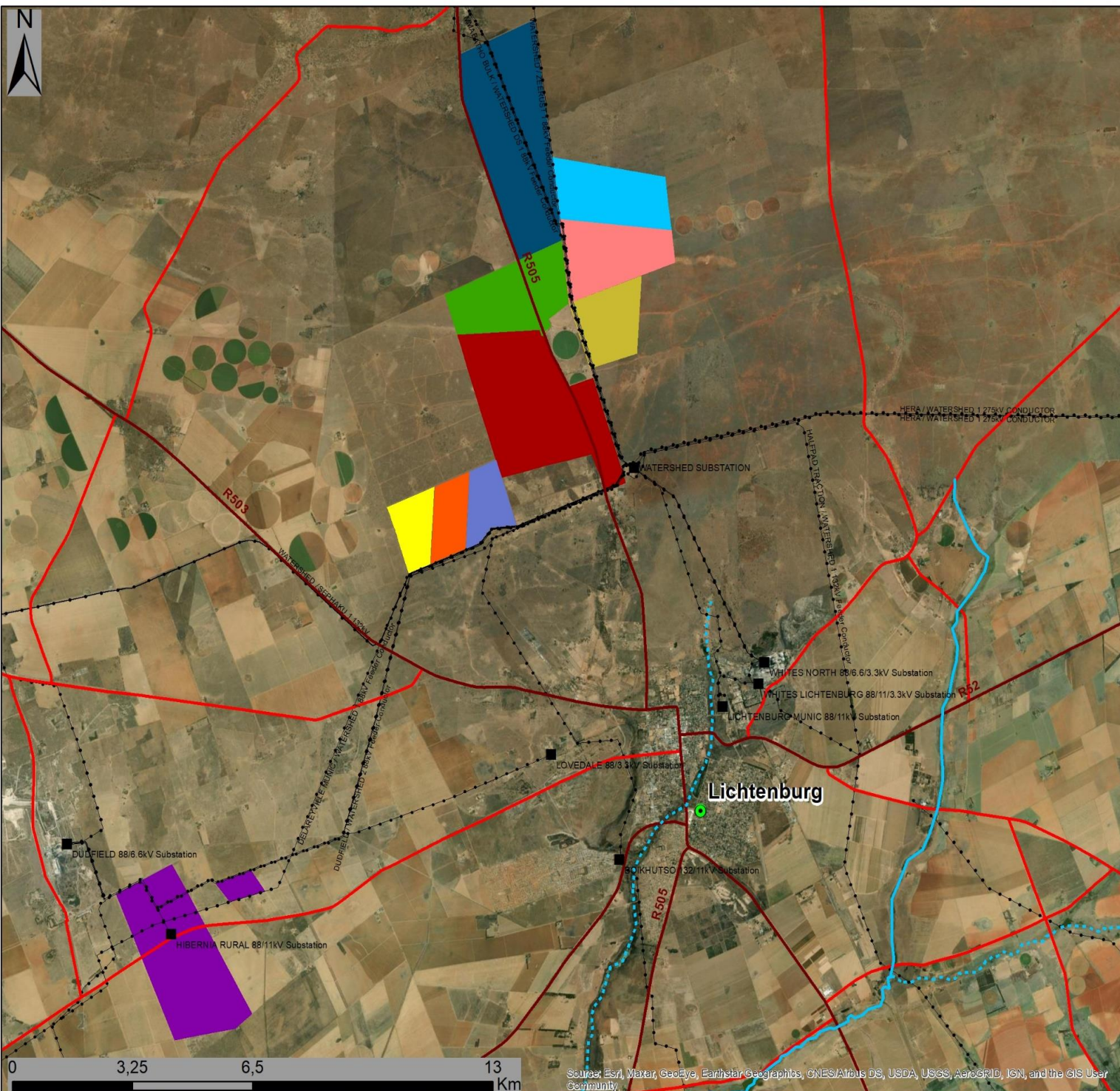
### Environmental Sensitivities

- Heritage Feature - Potential Burial Site (10m buffer)
- Avifauna (Medium)
- Ecological Sensitivity (Medium)
- Ecological Sensitivity (Low Medium)

Scale: 20 000  
 Projection: LO19  
 Map Ref: Setaria Pref Layout Map



Sources: Esri, HERE, Garmin, Intermap, increment P Corp., GEBCO, USGS, FAO, NPS, NRCAN, GeoBase, IGN, Kadaster NL, Ordnance Survey, Esri Japan, METI, Esri China (Hong Kong), (c) OpenStreetMap contributors, and the GIS User Community



## Setaria PV Facility and Associated Infrastructure, North West Province

### Cumulative Map

#### Legend

- Town
- Eskom Substation
- Existing Power Lines
- Non-Perennial River
- Perennial River
- National Route
- Regional Road
- Main Road
- Setaria PV Facility

#### Other known solar PV facilities:

- Barleria PV Facility (in process)
- Dicoma PV Facility (in process)
- Hibernia PV Facility (authorised)
- Tlitseng PV Cluster (authorised)
- Lichtenburg 3 PV Facility (authorised)
- Lichtenburg 2 PV Facility (authorised)
- Lichtenburg 1 PV Facility (authorised)
- Lichtenburg Solar Park (authorised)
- Subsolar PV Cluster (in process)

Scale: 50 000  
 Projection: LO19  
 Map Ref: Cumulative Map



Source: Esri, Maxar, GeoEye, Earthstar/Geographics, CNES/Airbus DS, USDA, USGS, AeroGRID, IGN, and the GIS User Community

**Setaria PV Facility, North West Province – Coordinates**

Site (development area)	Coordinates	Latitude:	Longitude:
	Northern point	26° 5'30.83"S	26° 6'14.23"E
	Eastern point	26° 5'56.88"S	26° 6'40.48"E
	Southern point	26° 6'21.09"S	26° 6'26.12"E
	Western point	26° 6'10.09"S	26° 6'1.20"E
	Centre point	26° 6'0.12"S	26° 6'22.23"E

Coordinates of Grid Connection Alternatives	Grid Corridor	Grid Connection Corridor Alternative 1	Grid Connection Corridor Alternative 2
		Start: 26° 6'15.80"S 26° 6'45.89"E	Start: 26° 6'35.97"S 26° 6'3.75"E
		Middle: 26° 6'19.91"S 26° 6'46.91"E	Middle: 26° 6'40.57"S 26° 6'5.01"E
		End: 26° 6'23.10"S 26° 6'48.30"E	End: 26° 6'44.69"S 26° 6'7.42"E

Centre Coordinates BESS, Construction and O&M hub (Dependent on the grid connection alternative selected for authorisation)	Alternative 1: 26° 6'8.77"S 26° 6'42.62"E Alternative 2: 26° 6'34.50"S 26° 6'6.59"E
---	--