

Upington Solar Thermal Plant Three

Vegetation association map

Legend

- Existing power line
- Ephemeral drainage lines
- Secondary road
- Abengoa Property

Layout Plan:

- McTaggart Substation
- Existing Access Road
- New Access Road
- Existing Water Pipe Line
- New Power Line for plant 3
- New water pipeline
- Plant 3 evaporation pond
- Plant 3 power island
- Plant 3 - Parabolic trough field
- Khi Solar One (under construction)

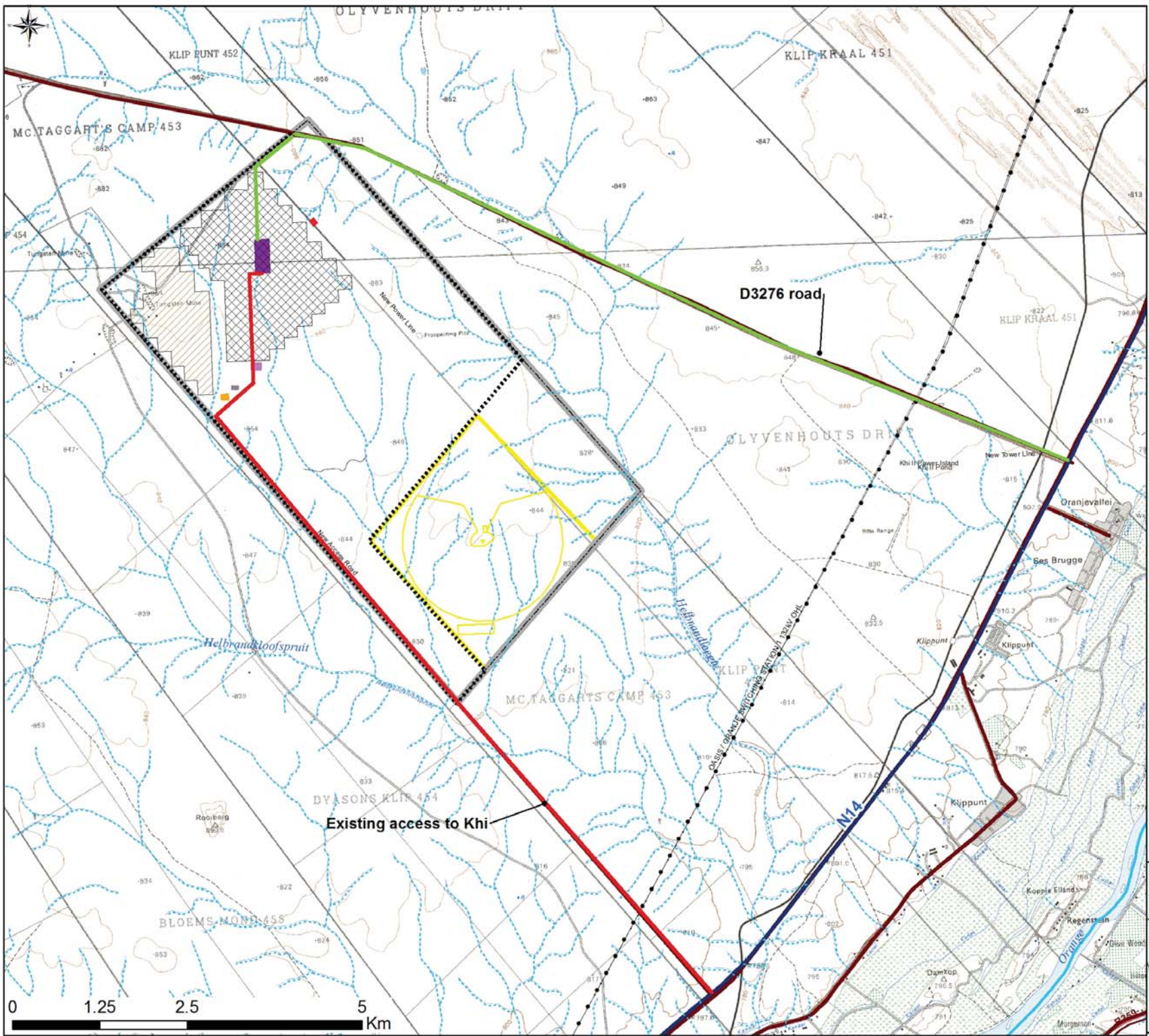
Vegetation units:

- Acacia mellifera - Cenchrus ciliaris (drainage lines)
- Acacia mellifera - Eragrostis rotifer (pan)
- Boscia foetida - Rhigozum trichotomum (washes)
- Phaeoptilum spinosum - Stipagrostis uniplumis

Savannah
Savannah Environmental Consulting

Upington

North West
Free State
Northern Cape
Western Cape
Eastern Cape



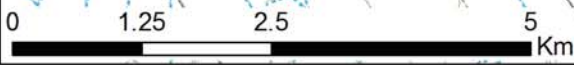
Upington Solar Thermal Plant Three Alternative access roads

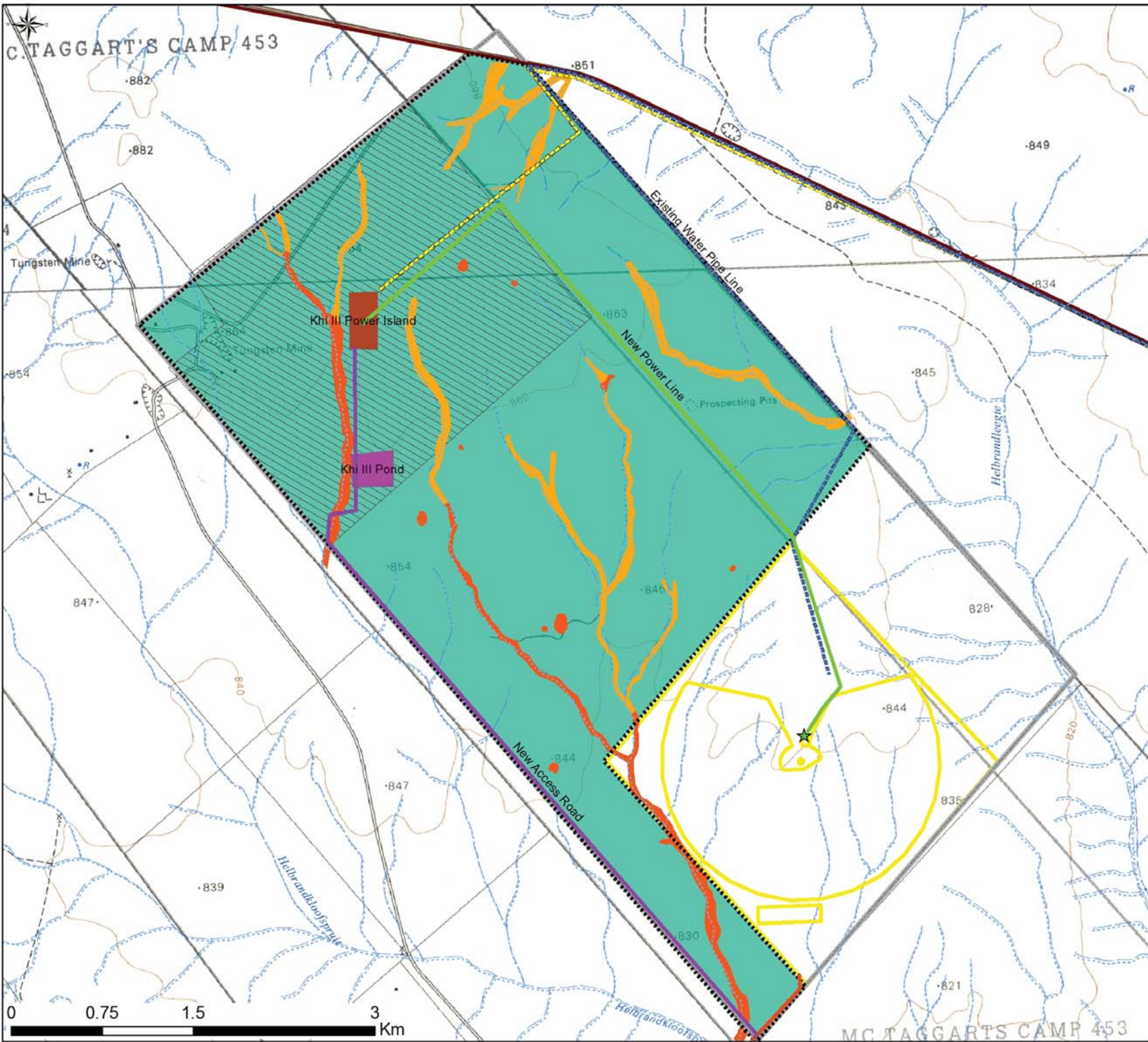
Legend

- Alternative access road 1
- Alternative access road 2
- Existing access roads
- - - Existing power line
- Perennial river
- - - Non-perennial river
- National route
- Abengoa Property

Layout Plan:

- Eastern Solar Field
- Western Solar Field
- Power Island (200m X 500m)
- Raw Water Reservoir
- EPC Office Area
- Laydown Area
- Mirror Assembly Plant
- Khi Solar One (under construction)





Upington Solar Thermal Plant Three

Ecology sensitivity map

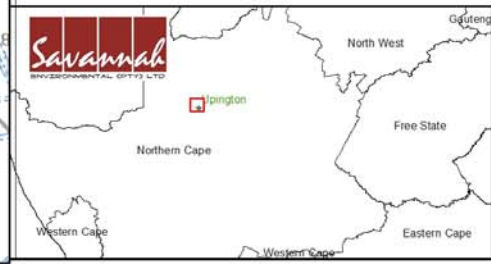
Legend

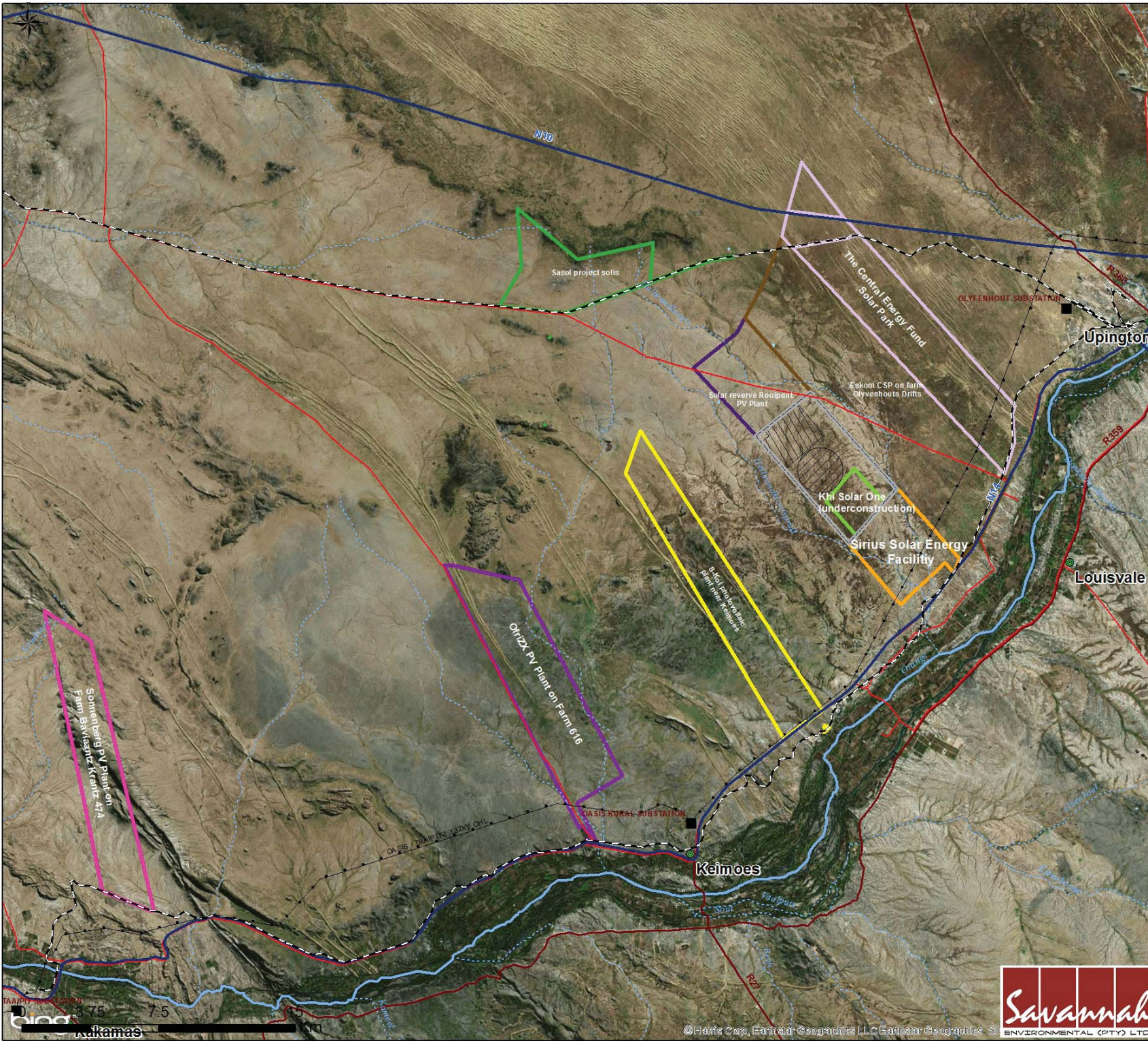
- Existing power line
- Ephemeral drainage lines
- Secondary road
- Abengoa Property
- Existing Access Road
- New Access Road
- New Power Line for plant 3
- Existing Water Pipe Line
- New water pipeline
- McTaggart Substation
- Area for evaporation ponds
- Plant 3 power island
- Plant 3 - Parabolic trough field
- Khi Solar One (under construction)

Layout Plan

Ecology sensitivity:

- High sensitivity
- Medium sensitivity
- Low sensitivity





PROPOSED ESTABLISHMENT OF PHASE 2 AND PHASE 3 OF THE UPINGTON SOLAR THERMAL PLANT, NORTHERN CAPE :

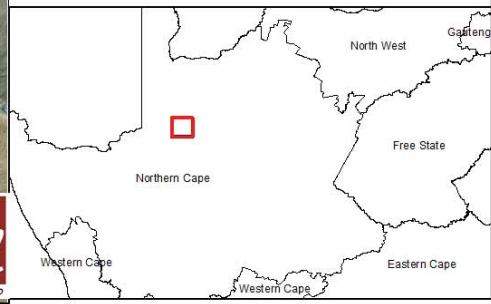
(in relation to other renewable energy projects)

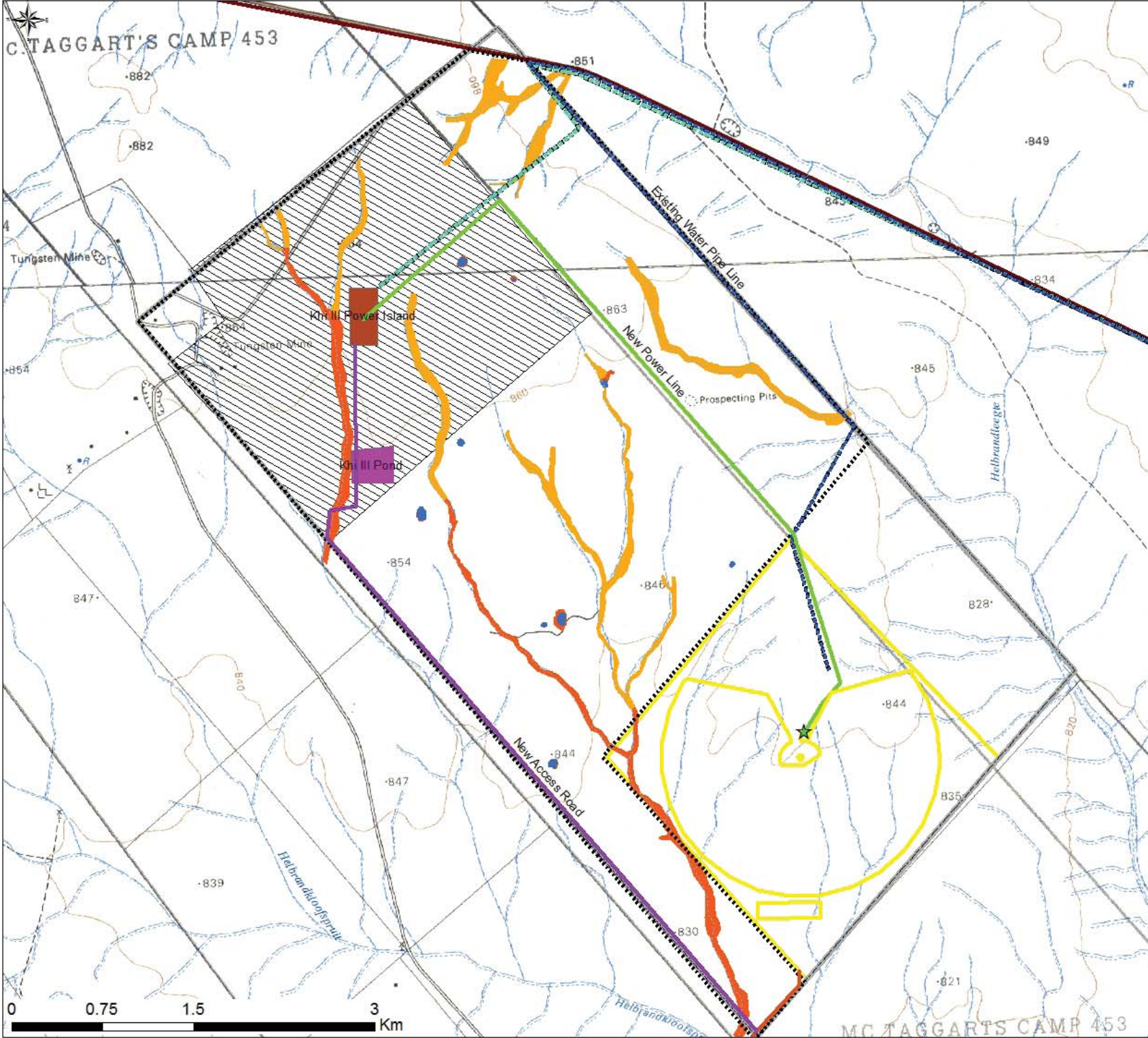
Legend

- Eskom substation
- Existing power line
- - - Railway line
- National route
- Regional road
- Secondary road
- Perennial river
- · - · - Non-Perennial river
- Abengoa Property
- ▨ Proposed Upington Solar Thermal Plant Two footprint
- ▨ Proposed Upington Solar Thermal Plant Three footprint

Other renewable energy projects:

- ▭ Khi Solar One (under construction)
- ▭ Sirius Solar Energy Facility
- ▭ The Central Energy Fund Solar Park
- ▭ Eskom CSP
- ▭ S-Kol PV Plant
- ▭ Sasol project solis (CSP)
- ▭ Solar reserve Rooipunt (PV)
- ▭ OfriZX PV Plant on Farm 616
- ▭ Sonnenberg PV Plant





Upington Solar Thermal Plant Three
Environmental sensitivity map

Legend

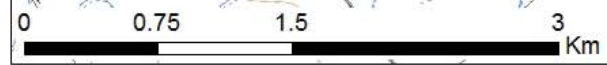
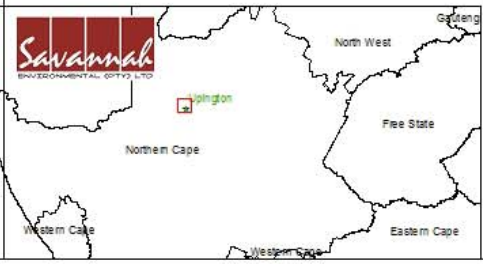
- Existing power line
- Ephemeral drainage lines
- Secondary road
- Abengoa Property

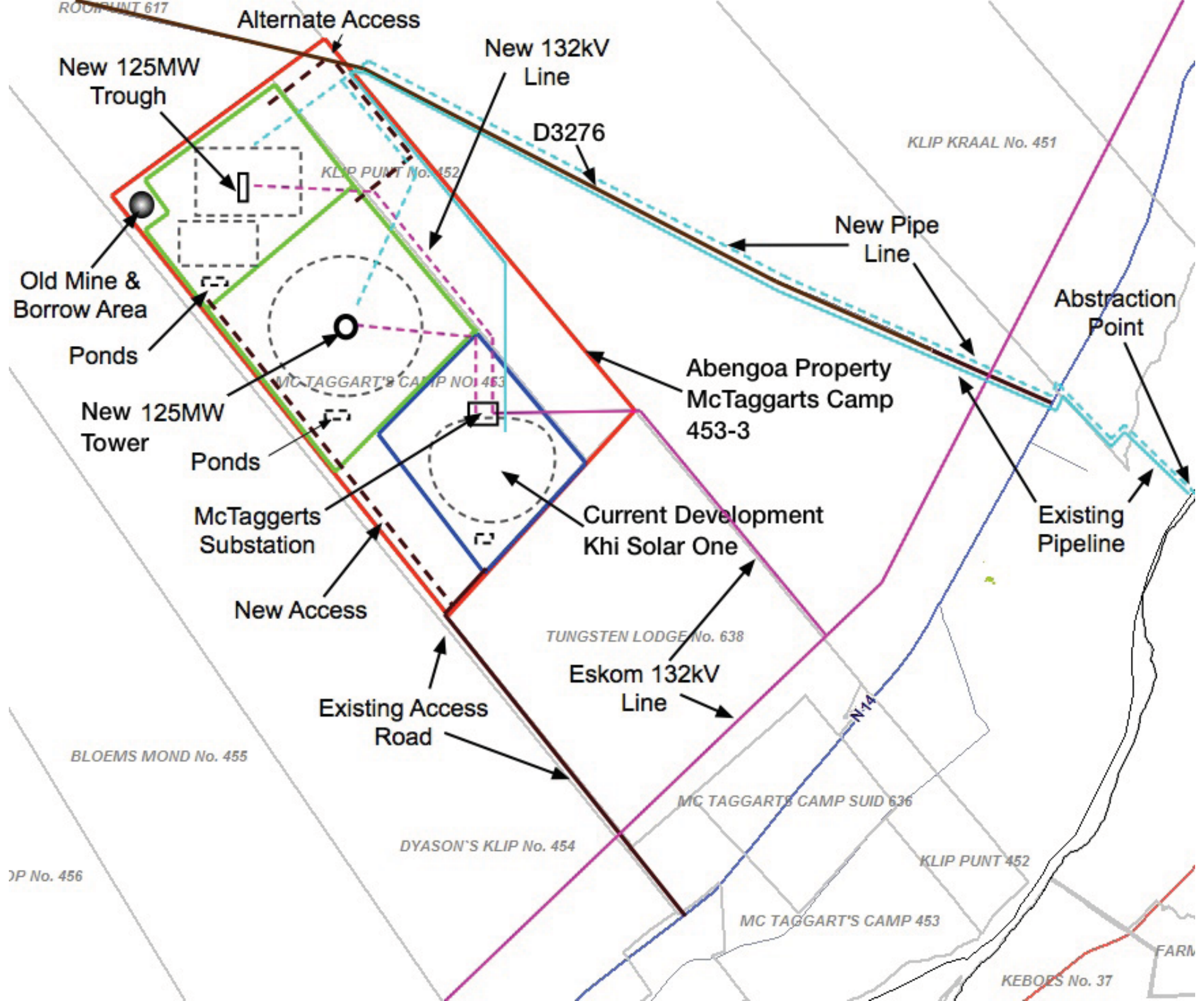
Layout Plan:

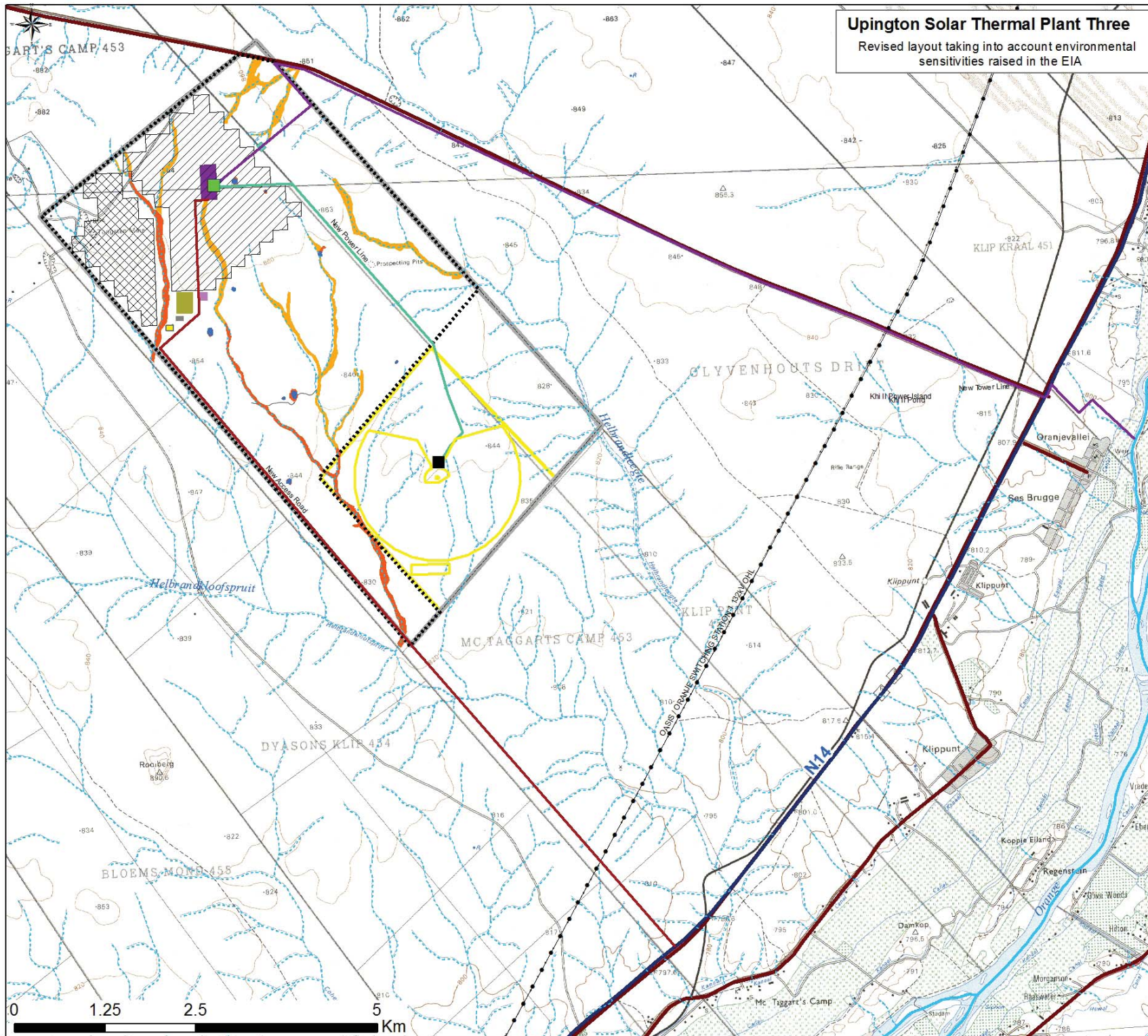
- McTaggart Substation
- Existing Access Road
- New Access Road
- New Power Line for plant 3
- Existing Water Pipe Line
- New water pipeline
- Area for evaporation ponds
- Plant 3 power island
- Plant 3 - Parabolic trough field
- KHI Solar One (under construction)

Environmental sensitivity:

- Seasonal pans
- High ecological sensitivity
- Medium ecological sensitivity







Uppington Solar Thermal Plant Three
 Revised layout taking into account environmental sensitivities raised in the EIA

Legend

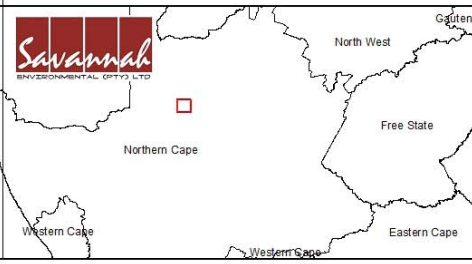
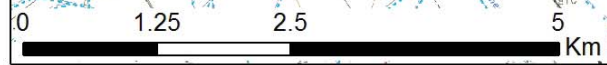
- Existing power line
- Perennial river
- - - Non-perennial river
- National route
- Secondary road
- Abengoa Property

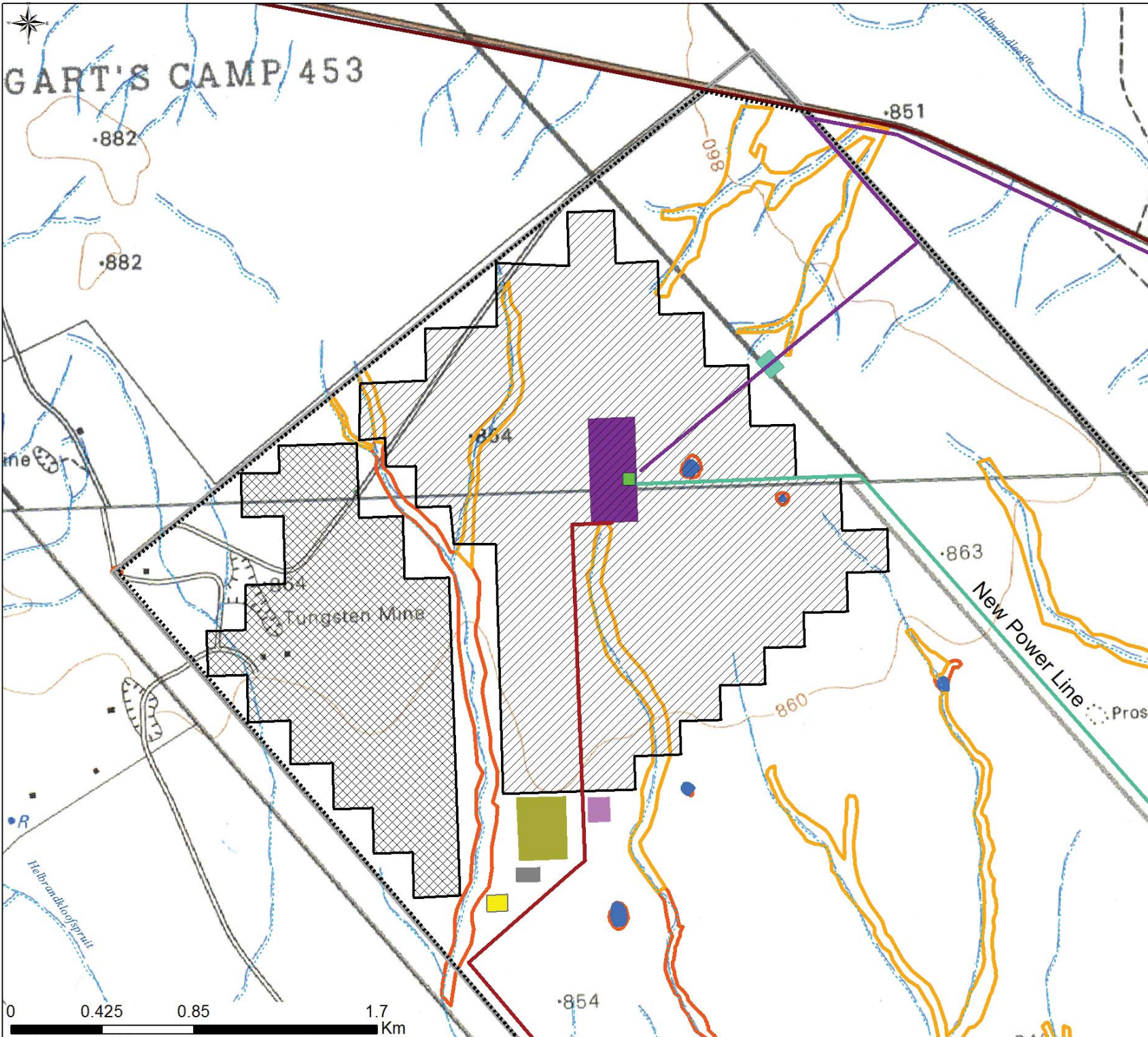
Layout Plan:

- On-site Substation (50m X 50m)
- McTaggart Substation
- Access Road
- 132kV Line
- Water Supply Line
- ▨ Eastern Solar Field
- ▨ Western Solar Field
- Power Island (200m X 500m)
- Raw Water Reservoir
- Area for evaporation ponds
- EPC Offices
- Laydown Area
- Mirror Assembly Plant
- Khi Solar One (under construction)

Environmental sensitivities:

- Seasonal pans
- High ecological sensitivity
- Medium ecological sensitivity





Uppington Solar Thermal Plant Three

Revised layout taking into account environmental sensitivities raised in the EIA

Legend

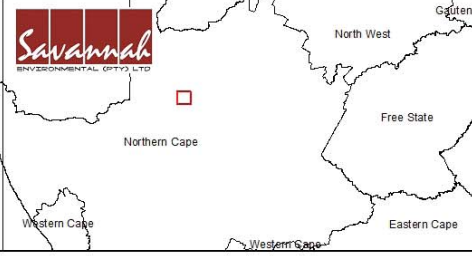
- Existing power line
- Perennial river
- Non-perennial river
- National route
- Secondary road
- Abengoa Property

Layout Plan:

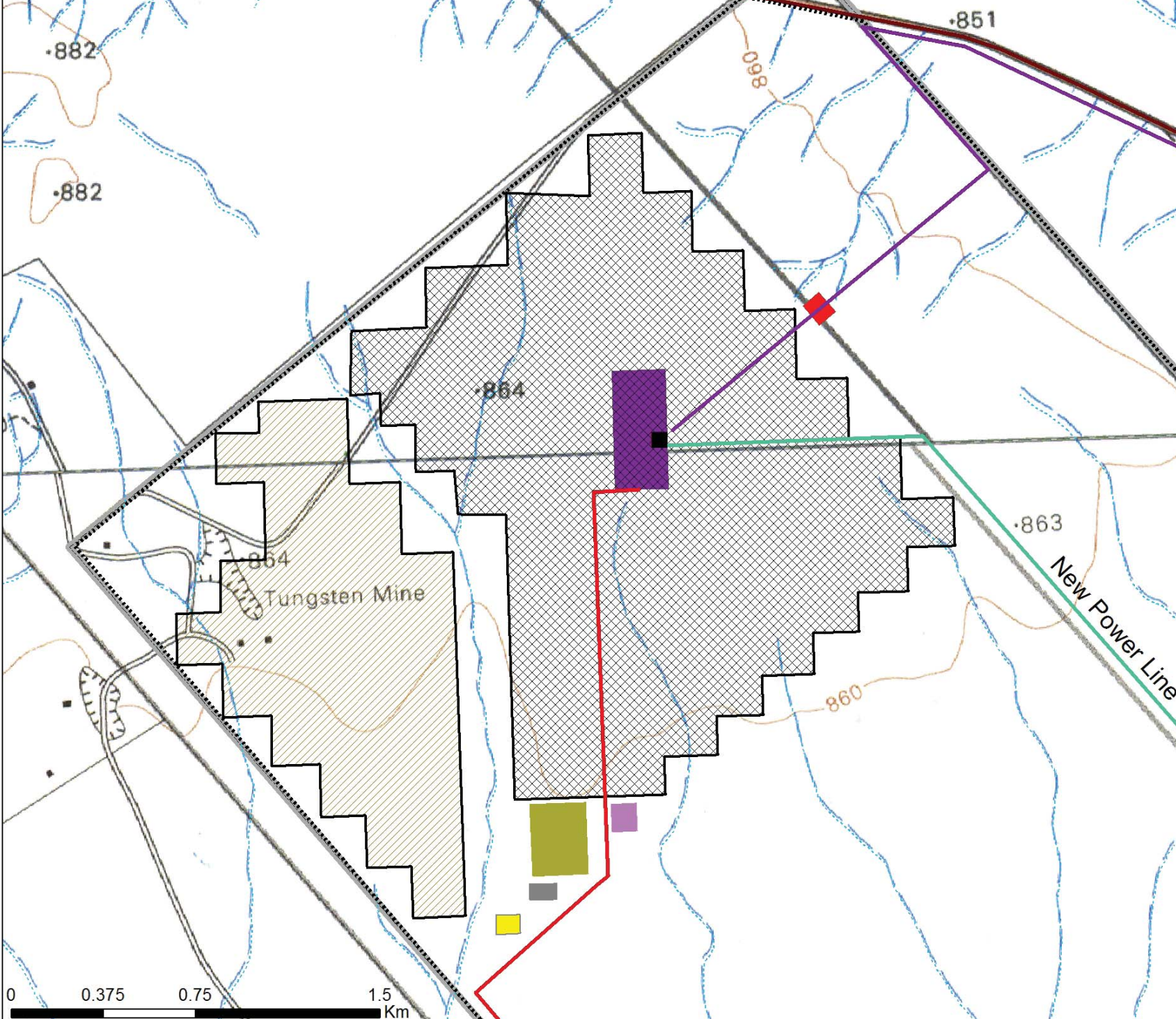
- On-site Substation (50m X 50m)
- Access Road
- 132kV Line
- Water Supply Line
- Eastern Solar Field
- Western Solar Field
- Power Island (200m X 500m)
- Raw Water Reservoir
- Area for evaporation ponds
- EPC Offices
- Laydown Area
- Mirror Assembly Plant

Environmental sensitivities:

- Seasonal pans
- High ecological sensitivity
- Medium ecological sensitivity



RT'S CAMP 453



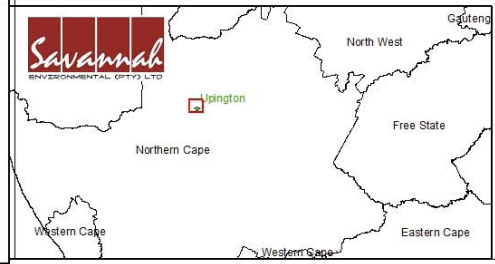
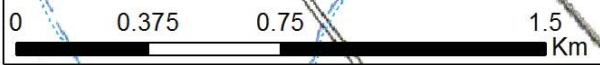
Upington Solar Thermal Plant Three
Revised Layout Plan

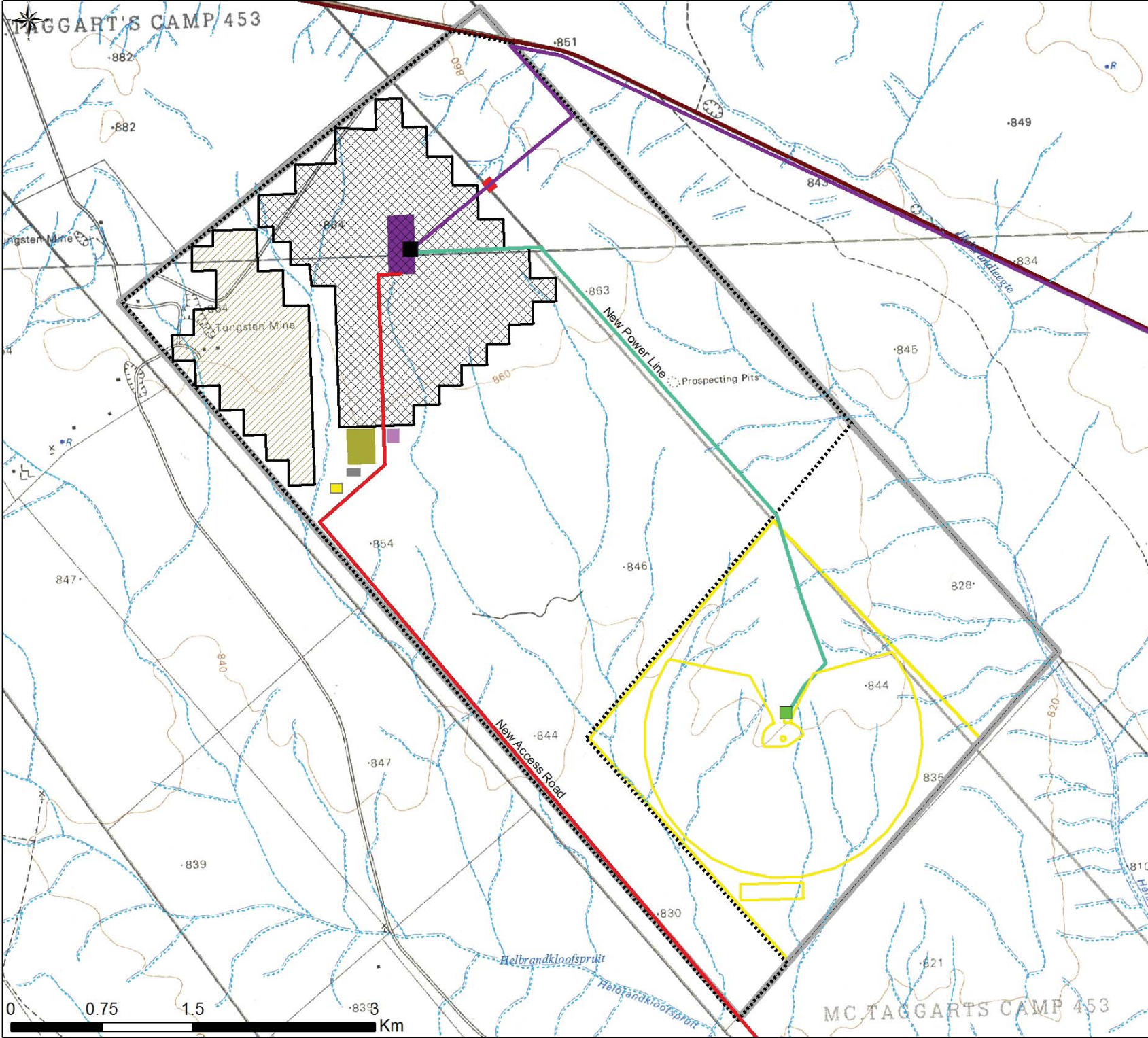
Legend

- Existing power line
- Perennial river
- - - Non-perennial river
- Secondary road
- - - Abengoa Property

Layout Plan:

- On-site Substation
- Access Road
- 132kV Line
- Water Supply Line
- ▨ Eastern Solar Field
- ▩ Western Solar Field
- Power Island (200m X 500m)
- Raw Water Reservoir
- Area for evaporation ponds
- EPC Offices
- Laydown Area
- Mirror Assembly Plant
- Khi Solar One (under construction)





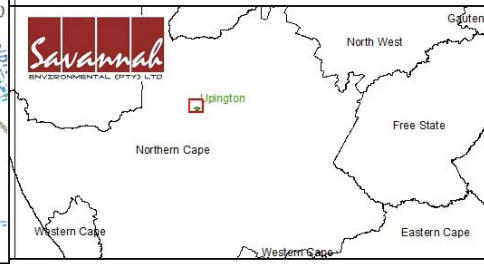
Upington Solar Thermal Plant Three
Revised Layout Plan

Legend

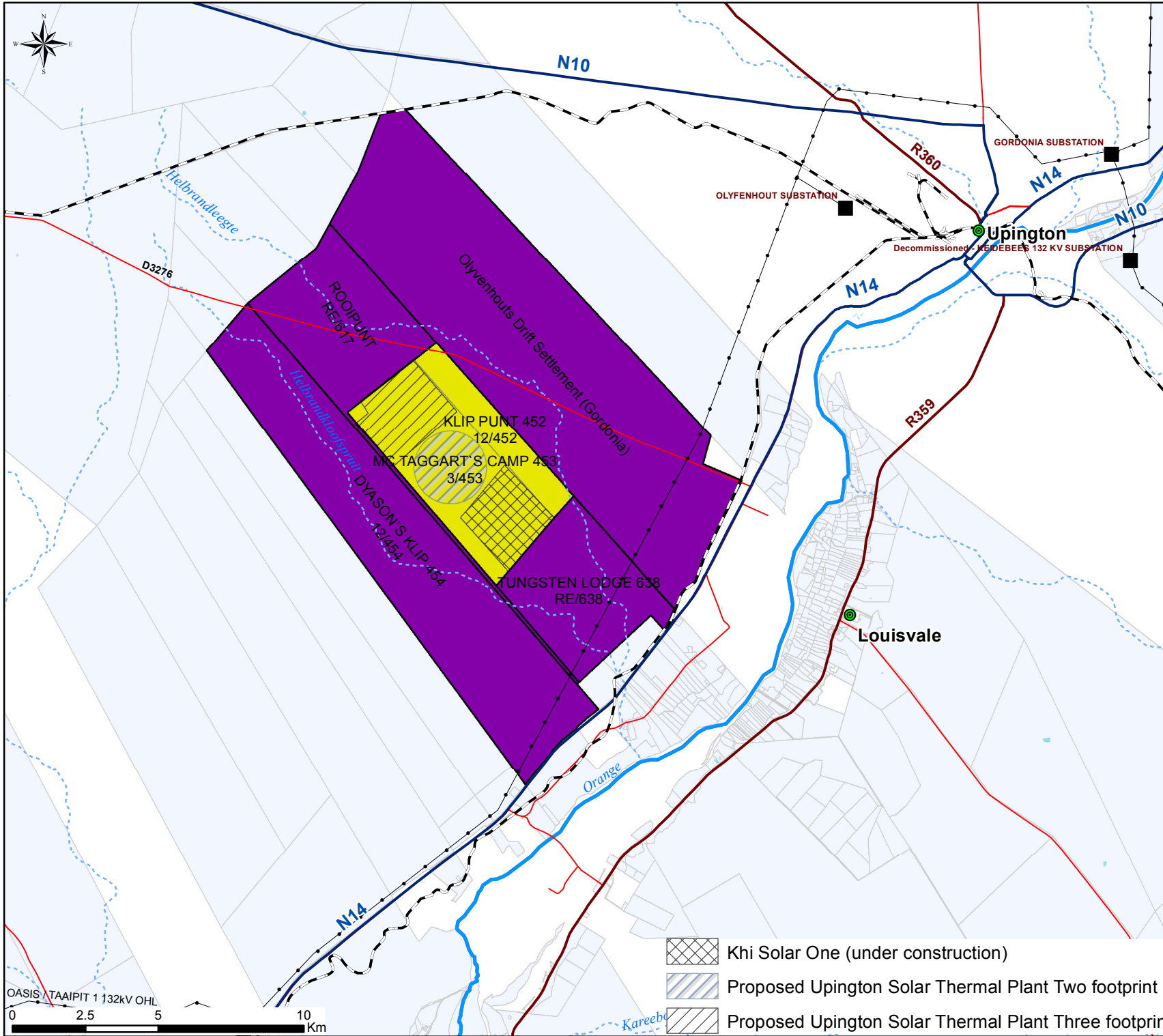
- Existing power line
- Perennial river
- - - Non-perennial river
- Secondary road
- Abengoa Property

Layout Plan:

- On-site Substation
- McTaggart Substation
- Access Road
- 132kV Line
- Water Supply Line
- ▨ Eastern Solar Field
- ▩ Western Solar Field
- Power Island (200m X 500m)
- Raw Water Reservoir
- Area for evaporation ponds
- EPC Offices
- Laydown Area
- Mirror Assembly Plant
- Khi Solar One (under construction)



MC TAGGARTS CAMP 453



PROPOSED ESTABLISHMENT OF PHASE 2 AND PHASE 3 OF THE UPINGTON SOLAR THERMAL PLANT, NORTHERN CAPE :

Landowners Map

- Legend**
- Eskom substation
 - Existing power line
 - - - Railway line
 - National route
 - Regional road
 - Secondary road
 - Perennial river
 - - - Non-Perennial river
 - neighbouring farm portions
 - Abengoa Property



- ▨ KHI Solar One (under construction)
- ▨ Proposed Upington Solar Thermal Plant Two footprint
- ▨ Proposed Upington Solar Thermal Plant Three footprint

