

ADDITIONAL CSP FACILITIES ASSOCIATED WITH AUTHORIZED CSP SITE 5 WITHIN THE KAROSHOEK SOLAR VALLEY PARK, NORTHERN CAPE

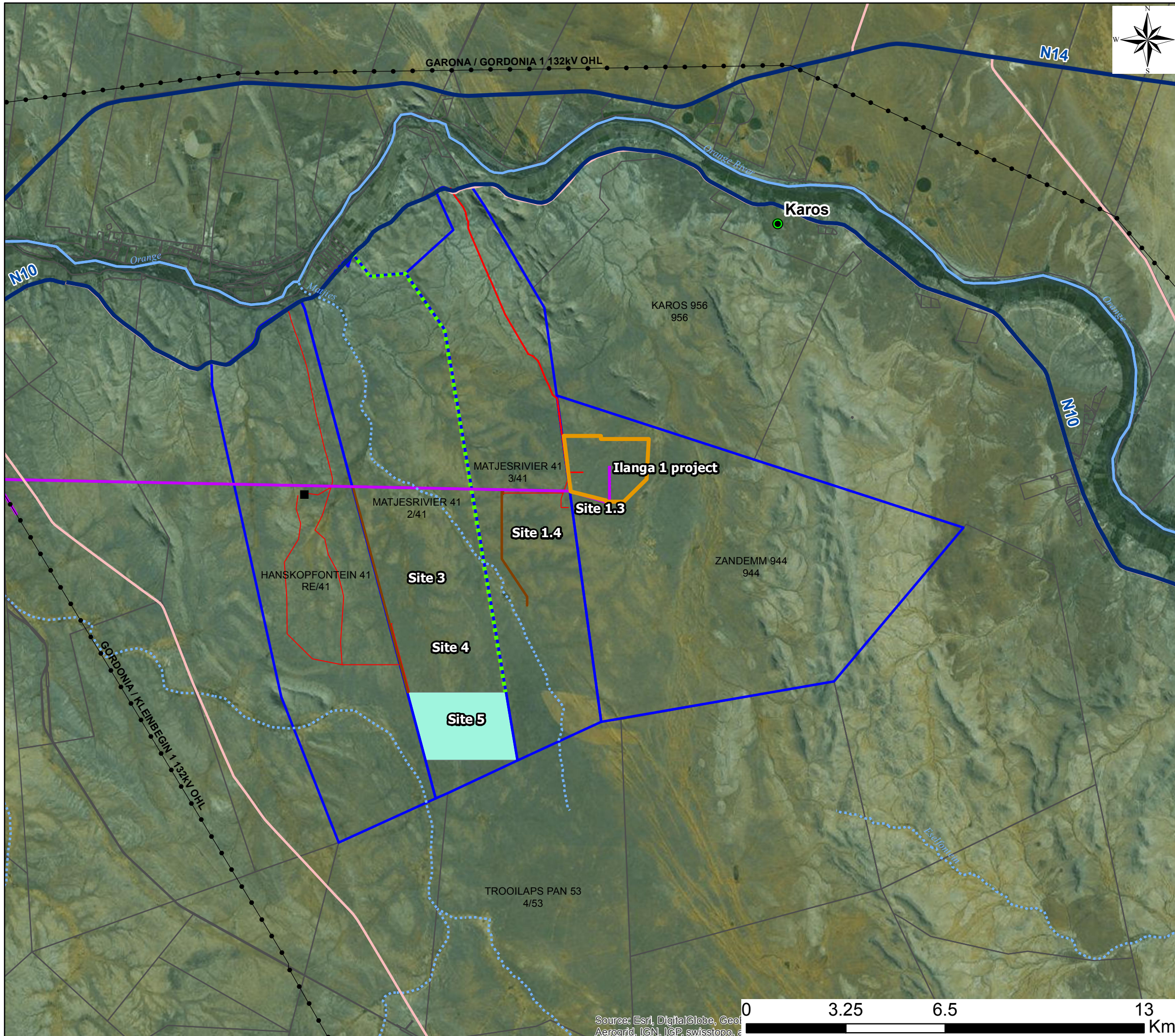
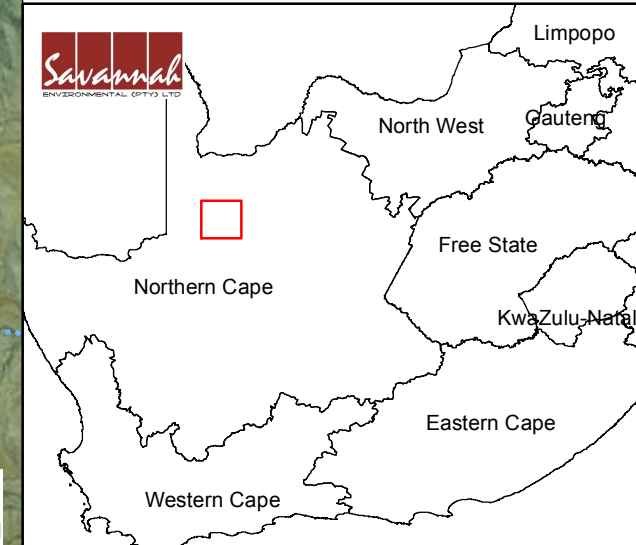


Locality map

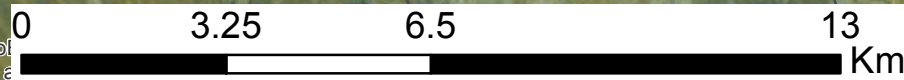
Legend

- Eskom Power Line
- National road
- Main road
- Perennial river
- ⋯ Non-perennial river
- ▭ Authorized Ilanga CSP site
- Authorized Ilanga 1 Power Line
- Proposed 400kV Substation
- Access roads
- ⋯ Water pipeline
- Power line
- ▭ Karoshoek Solar Valley Project Site
- ▭ Site 5 (Parabolic Trough)

Scale: A3 1:120 000
 Projection: LO21 WGS 1984
 Map ref#: Karoshoek Solar Park Projects (site 5)_
 Locality Map_11.11.15



Source: Esri, DigitalGlobe, GeoEye, AeroGrid, IGN, IGP, swisstopo, etc.















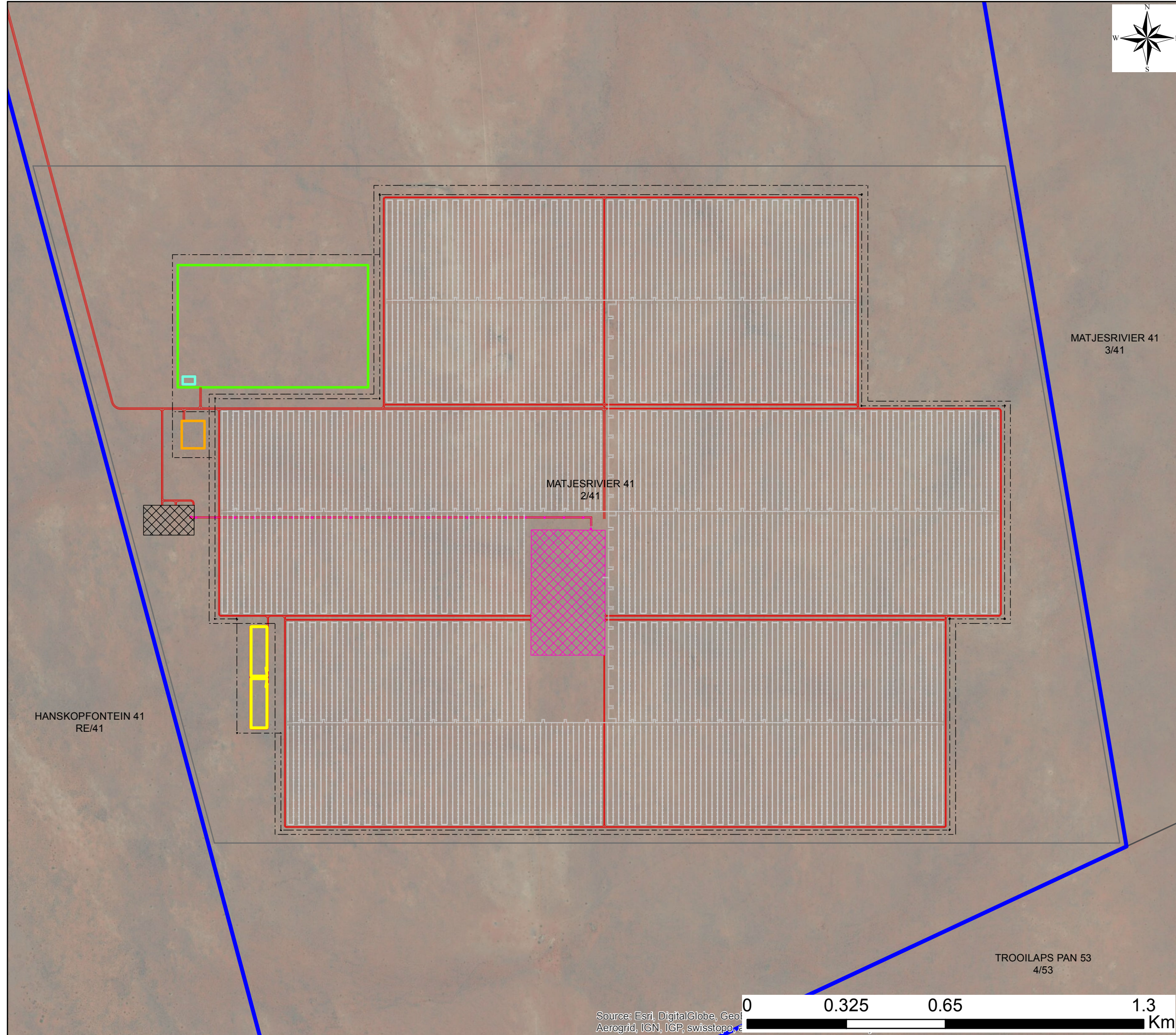


PROPOSED ILANGA CSP 4 PROJECT, WITHIN THE KAROSHOEK SOLAR VALLEY PARK, NORTHERN CAPE

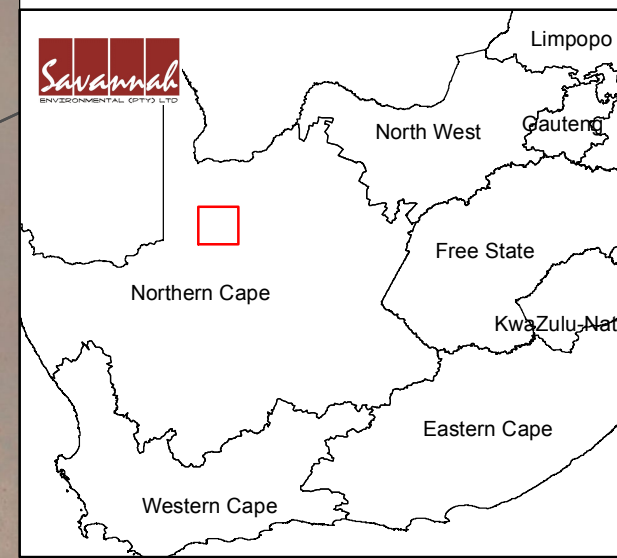
Layout Map

Legend

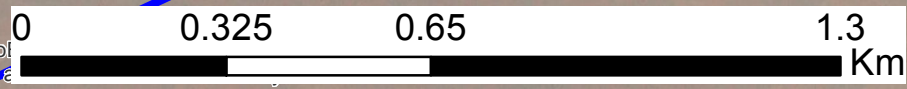
-  Affected farm portion
-  Illanga CSP 4 site
-  132kV Karoshhoek Substation
-  Power Block
-  Evaporation Ponds
-  Administration Building
-  Temporary Facilities Area
-  GLP Plant
-  132kV Overhead Line Evacuation
-  Access Roads
-  Solar Field
-  Wind Fence



A3 Scale: 1:12 000
 Projection: LO21 WGS 1984
 Map Ref. No.: Ilanga CSP 4 Layout Map
 Date: 15.04.16



Source: Esri, DigitalGlobe, GeoEye, AeroGRID, IGN, IGP, swisstopo, etc.





PROPOSED ILANGA CSP 4 PROJECT, WITHIN THE KAROSHOEK SOLAR VALLEY PARK, NORTHERN CAPE

Environmental Sensitivity and Layout Map

Legend

- Affected farm portion
- Illanga CSP 4 Project Site

Layout Plan:

- Temporary Facilities Area
- Wind Fence
- Access Roads
- Administration Building
- GLP Plant
- Evaporation Ponds
- Solar Field
- 132kV Overhead Line Evacuation
- Power Block
- 132kV Karoshoek Substation

Environmental Sensitivities:

- High Ecological Sensitivity
- Medium-High Ecological Sensitivity
- Medium Ecological Sensitivity
- Medium-Low Ecological Sensitivity
- Potential Avifauna Sensitive Area (Inactive Secretarybird Nest)

