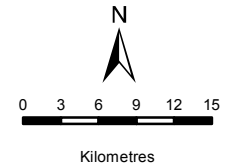


BIOTHERM ENERGY (PTY) LTD

LOCALITY OF MARALLA & ESIZAYO FACILITIES

Legend

- Towns
- N1
- Provinces of RSA
- Maralla East Wind Facility
- Maralla West Wind Facility
- Esizayo Wind Facility



DATA SOURCE:
CHIEF DIRECTORATE: NATIONAL GEO-SPATIAL INFORMATION

PROJECTION: WGS HARTEBEESHOEK 94

PROJECT TITLE: WIND AND SOLAR RENEWABLES

PROJECT NO: 47579

SCALE: 1:600,000 AT A4 DATE: 22/08/2016

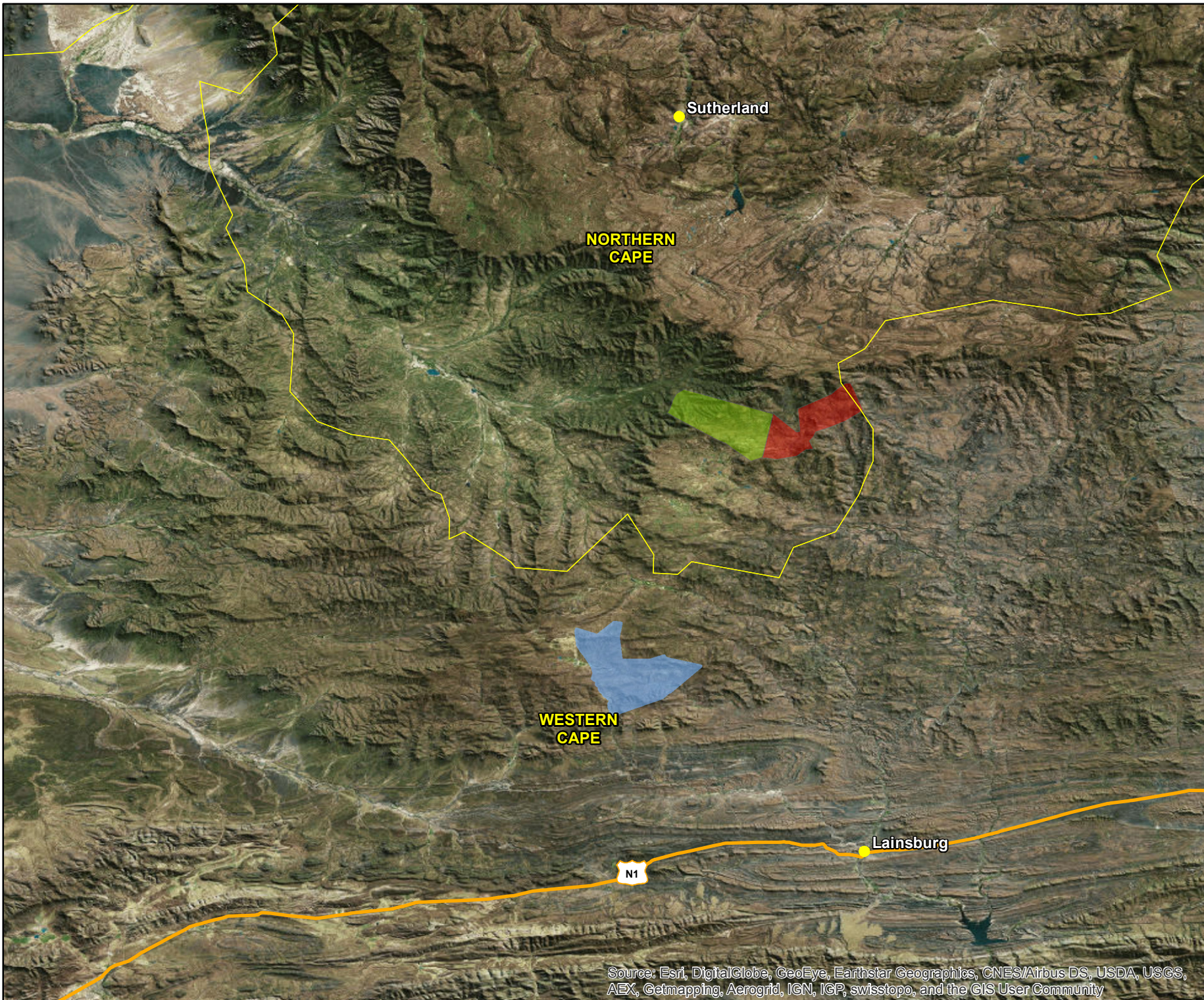
DRAWN BY: SABELO DUBE FIGURE NO: 1

REVIEWED BY: ASHLEA STRONG



DISCLAIMER

The information on this figure was derived from various digital databases available to WSP Environmental (Pty) Ltd. All information is provided "as is" and it must be acknowledged that data, information, and maps are dynamic and in a constant state of maintenance, correction and update. WSP Environmental (Pty) Ltd cannot accept any responsibility for errors, omissions, or positional accuracy where it has not been directly responsible for the production of the data referenced. There are no warranties, expressed or implied, as to the use of this information, including the warranty of merchantability or fitness for a particular purpose. Notification of any errors will be appreciated.

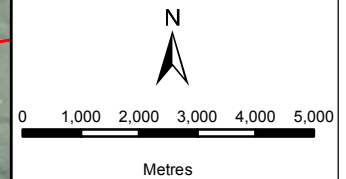


Source: Esri, DigitalGlobe, GeoEye, Earthstar Geographics, CNES/Airbus DS, USDA, USGS, AEX, Getmapping, Aerogrid, IGN, IGP, swisstopo, and the GIS User Community

**BIOTHERM ENERGY
(PTY) LTD**
LOCALITY OF MARALLA
EAST

Legend

- Site Points
- Farms
- Maralla East Wind Facility



DATA SOURCE:
CHIEF DIRECTORATE: NATIONAL GEO-SPATIAL INFORMATION

PROJECTION: WGS HARTEBEESHOEK 94

PROJECT TITLE: WIND AND SOLAR RENEWABLES

PROJECT NO: 47579

SCALE: 1:130,000 AT A4 DATE: 22/08/2016

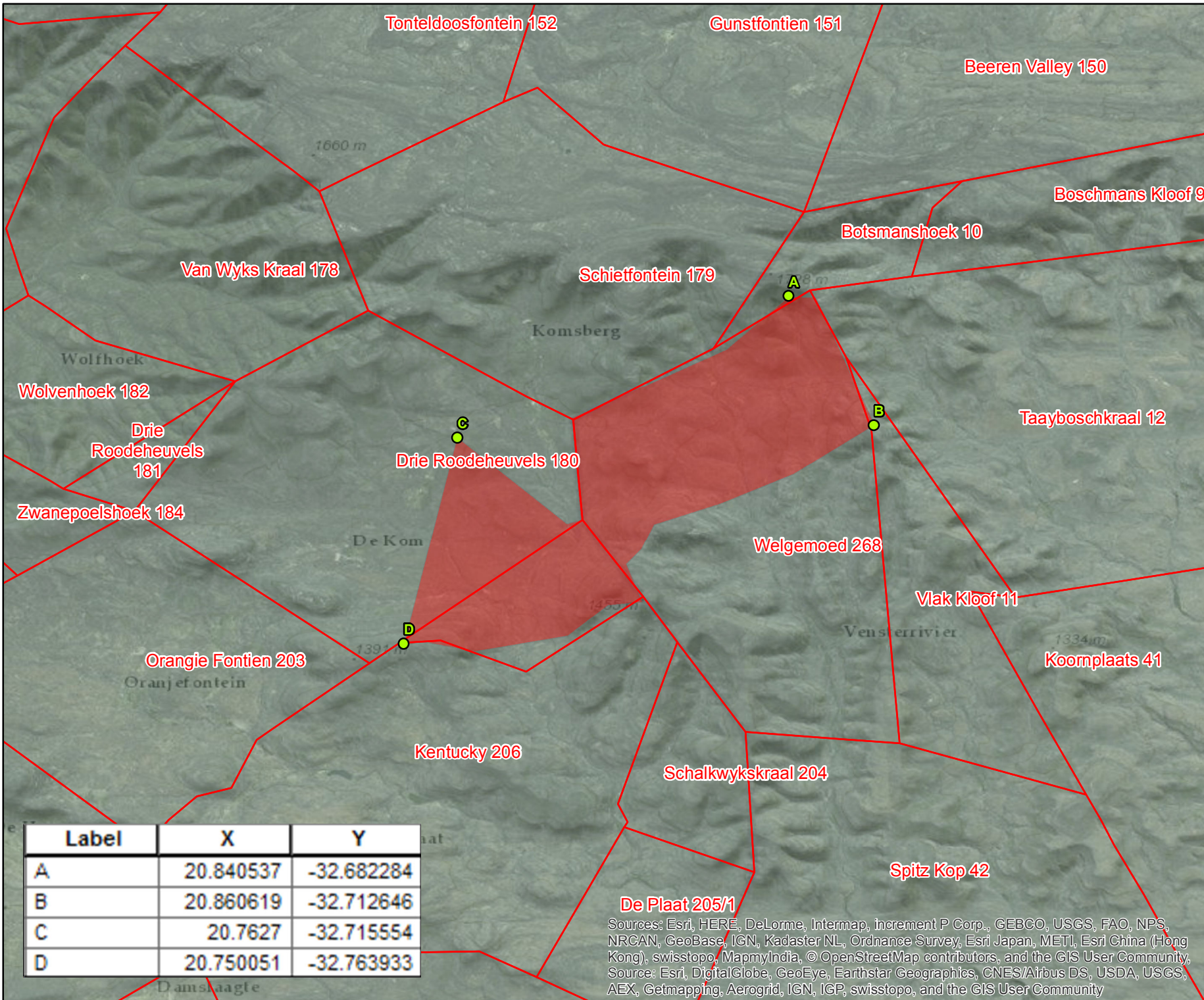
DRAWN BY: SABELO DUBE FIGURE NO: 1

REVIEWED BY: ASHLEA STRONG



DISCLAIMER

The information on this figure was derived from various digital databases available to WSP Environmental (Pty) Ltd. All information is provided "as is" and it must be acknowledged that data, information, and maps are dynamic and in a constant state of maintenance, correction and update. WSP Environmental (Pty) Ltd cannot accept any responsibility for errors, omissions, or positional accuracy where it has not been directly responsible for the production of the data referenced. There are no warranties, expressed or implied, as to the use of this information, including the warranty of merchantability or fitness for a particular purpose. Notification of any errors will be appreciated.



Label	X	Y
A	20.840537	-32.682284
B	20.860619	-32.712646
C	20.7627	-32.715554
D	20.750051	-32.763933

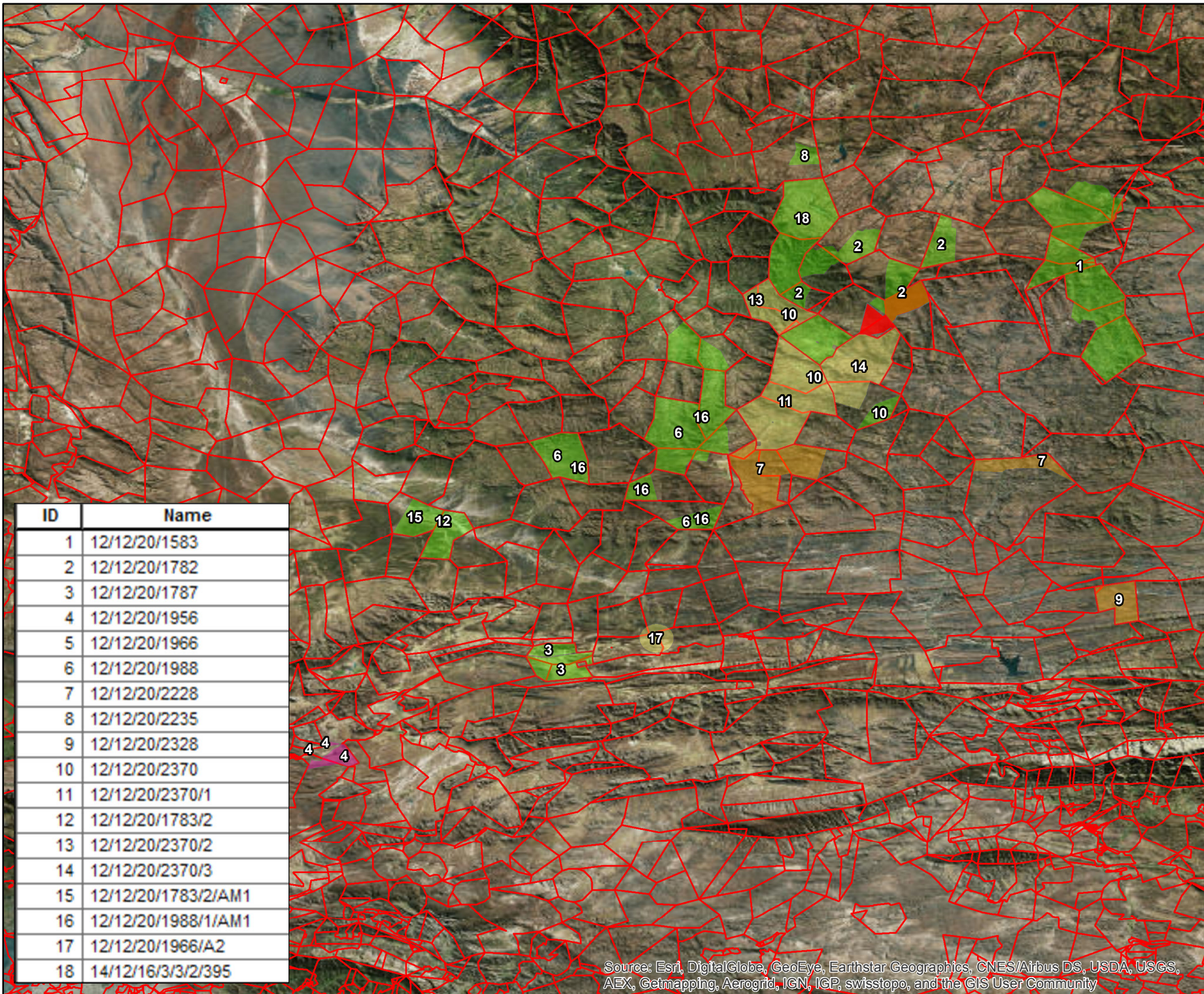
Sources: Esri, HERE, DeLorme, Intermap, increment P Corp., GEBCO, USGS, FAO, NPS, NRCAN, GeoBase, IGN, Kadaster NL, Ordnance Survey, Esri Japan, METI, Esri China (Hong Kong), swisstopo, MapmyIndia, © OpenStreetMap contributors, and the GIS User Community. Source: Esri, DigitalGlobe, GeoEye, Earthstar Geographics, CNES/Airbus DS, USDA, USGS, AEX, Getmapping, Aerogrid, IGN, IGP, swisstopo, and the GIS User Community

**BIO THERM ENERGY
(PTY) LTD**

COMPETITION 2016 RENEWABLE
EIAs - MARALLA EAST

Legend

- Farms
- Maralla East Wind Facility
- Project Status**
- Approved
- In Process
- PB_R1
- Withdrawn/Lapsed



ID	Name
1	12/12/20/1583
2	12/12/20/1782
3	12/12/20/1787
4	12/12/20/1956
5	12/12/20/1966
6	12/12/20/1988
7	12/12/20/2228
8	12/12/20/2235
9	12/12/20/2328
10	12/12/20/2370
11	12/12/20/2370/1
12	12/12/20/1783/2
13	12/12/20/2370/2
14	12/12/20/2370/3
15	12/12/20/1783/2/AM1
16	12/12/20/1988/1/AM1
17	12/12/20/1966/A2
18	14/12/16/3/3/2/395



Metres

DATA SOURCE:
CHIEF DIRECTORATE: NATIONAL GEO-
SPATIAL INFORMATION
PROJECTION: WGS HARTBEESHOEK 94
PROJECT TITLE: WIND AND SOLAR RENEWABLES
PROJECT NO: 47579
SCALE: 1:850,000 AT A4 DATE: 22/08/2016
DRAWN BY: SABELO DUBE FIGURE NO: 13
REVIEWED BY: ASHLEA STRONG



DISCLAIMER
The information on this figure was derived from various digital databases available to WSP Environmental (Pty) Ltd. All information is provided "as is" and it must be acknowledged that data, information, and maps are dynamic and in a constant state of maintenance, correction and update. WSP Environmental (Pty) Ltd cannot accept any responsibility for errors, omissions, or positional accuracy where it has not been directly responsible for the production of the data referenced. There are no warranties, expressed or implied, as to the use of this information, including the warranty of merchantability or fitness for a particular purpose. Notification of any errors will be appreciated.

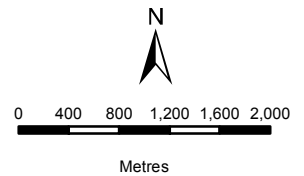
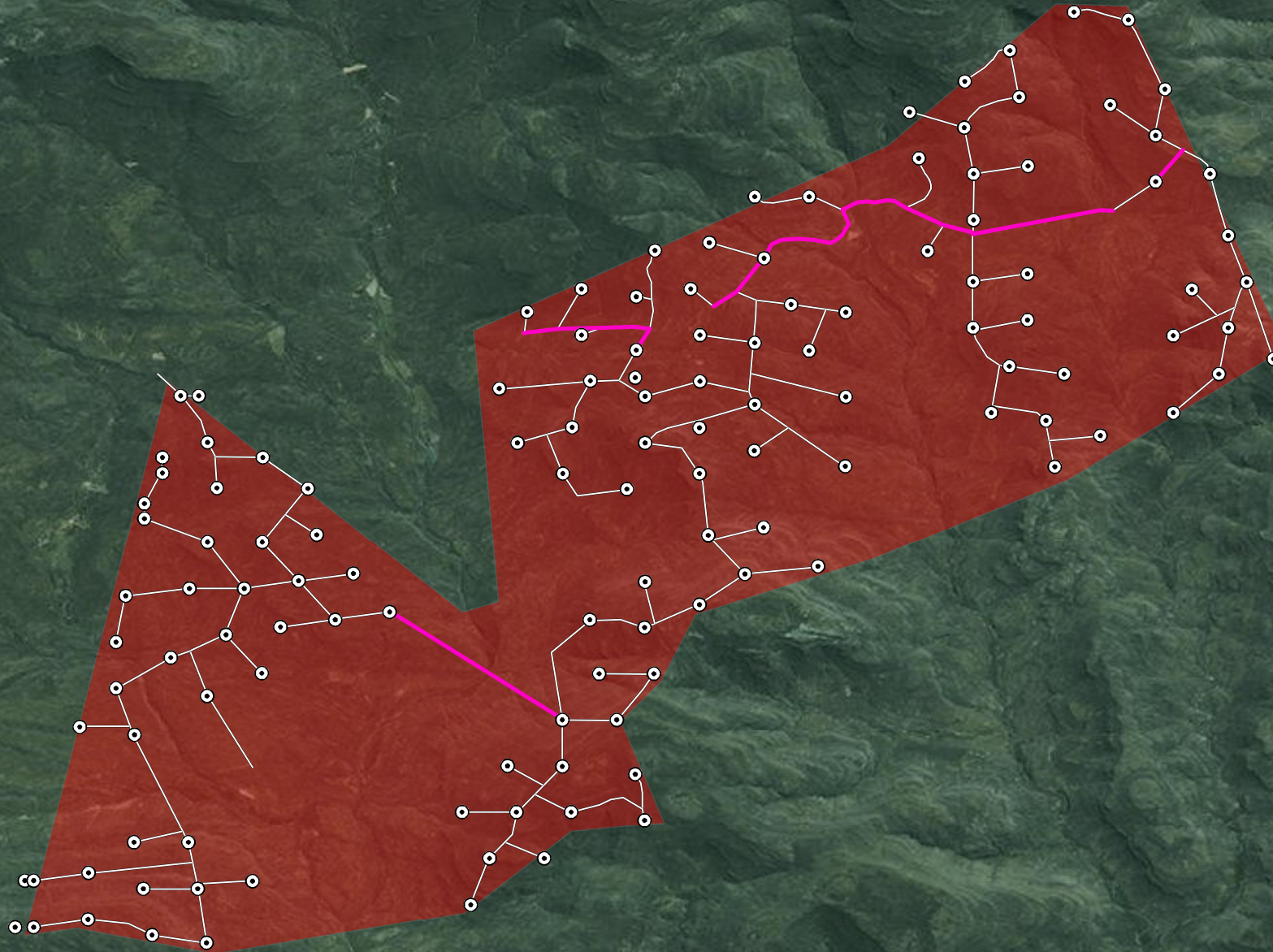
Source: Esri, DigitalGlobe, GeoEye, Earthstar Geographics, CNES/Airbus DS, USDA, USGS, AEX, Getmapping, Aerogrid, IGN, IGP, swisstopo, and the GIS User Community

BIOHERM ENERGY (PTY) LTD

TURBINE LAYOUT OF MARALLA EAST

Legend

- ⊙ Turbines
- Cables
- == Roads and Cables
- Maralla East Wind Facility



DATA SOURCE:	
CHIEF DIRECTORATE: NATIONAL GEO-SPATIAL INFORMATION	
PROJECTION: WGS HARTEBEESHOEK 94	
PROJECT TITLE: WIND AND SOLAR RENEWABLES	
PROJECT NO: 47579	
SCALE: 1:60,000 AT A4	DATE: 22/08/2016
DRAWN BY: SABELO DUBE	FIGURE NO: 5
REVIEWED BY: ASHLEA STRONG	



DISCLAIMER
The information on this figure was derived from various digital databases available to WSP Environmental (Pty) Ltd. All information is provided "as is" and it must be acknowledged that data, information, and maps are dynamic and in a constant state of maintenance, correction and update. WSP Environmental (Pty) Ltd cannot accept any responsibility for errors, omissions, or positional accuracy where it has not been directly responsible for the production of the data referenced. There are no warranties, expressed or implied, as to the use of this information, including the warranty of merchantability or fitness for a particular purpose. Notification of any errors will be appreciated.

Source: Esri, DigitalGlobe, GeoEye, Earthstar Geographics, CNES/Airbus DS, USDA, USGS, AEX, Getmapping, Aerogrid, IGN, IGP, swisstopo, and the GIS User Community

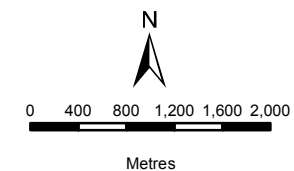
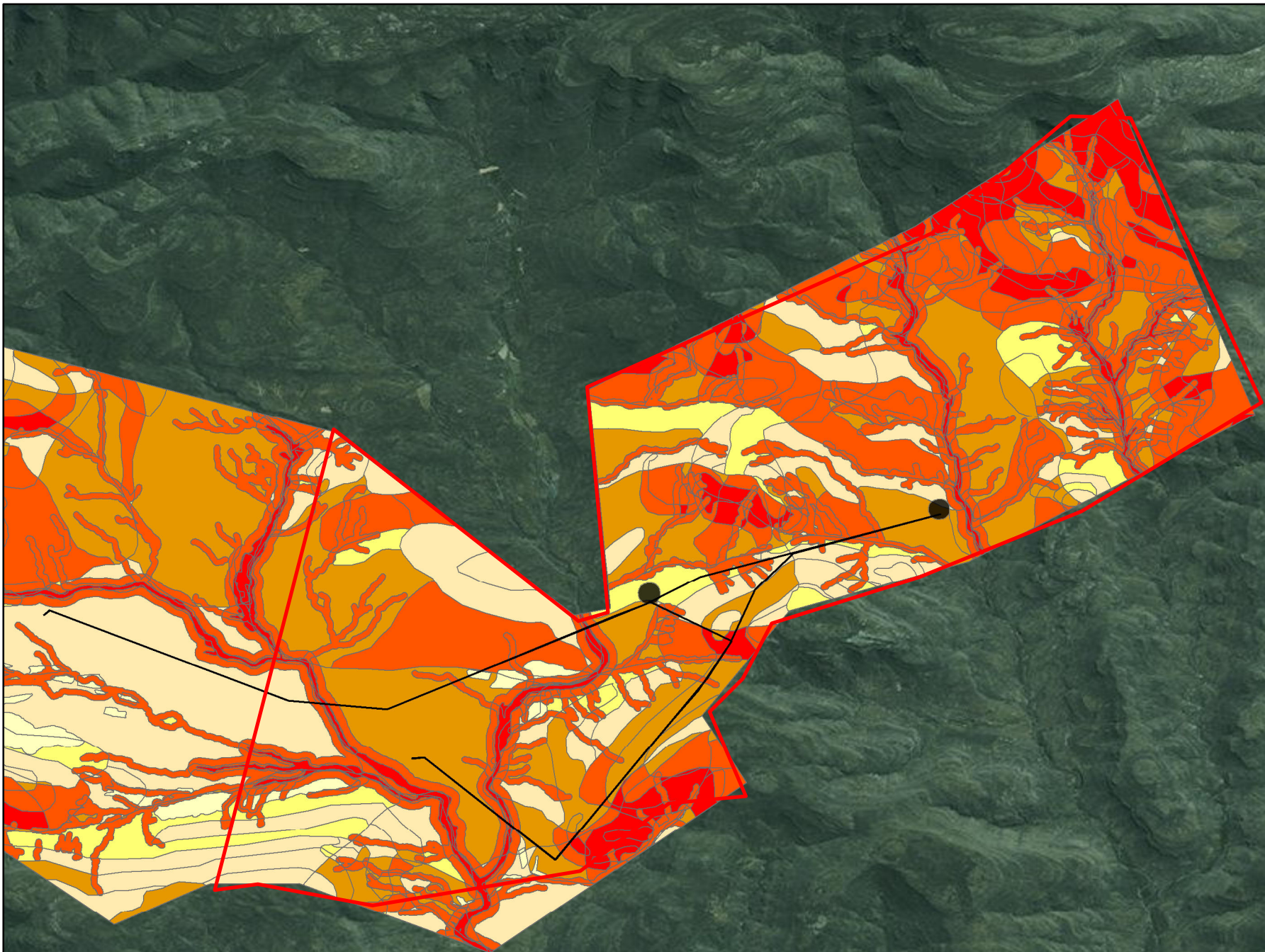
**BIO THERM ENERGY
(PTY) LTD**
SENSITIVITY MAP
OF MARALLA EAST UPDATED

Legend

- Powerlines
- OM Buildings
- Maralla East Wind Facility

Biodiversity

- Medium Low Sensitivity
- Medium Sensitivity
- Medium High Sensitivity
- High Sensitivity
- Very High Sensitivity



DATA SOURCE:
CHIEF DIRECTORATE: NATIONAL GEO-
SPATIAL INFORMATION

PROJECTION: WGS HARTEBEEHSHOEK 94

PROJECT TITLE: WIND AND SOLAR RENEWABLES

PROJECT NO: 47579

SCALE: 1:63,000 AT A4	DATE: 22/08/2016
DRAWN BY: SABELO DUBE	FIGURE NO: 14

REVIEWED BY: ASHLEA STRONG















DISCLAIMER

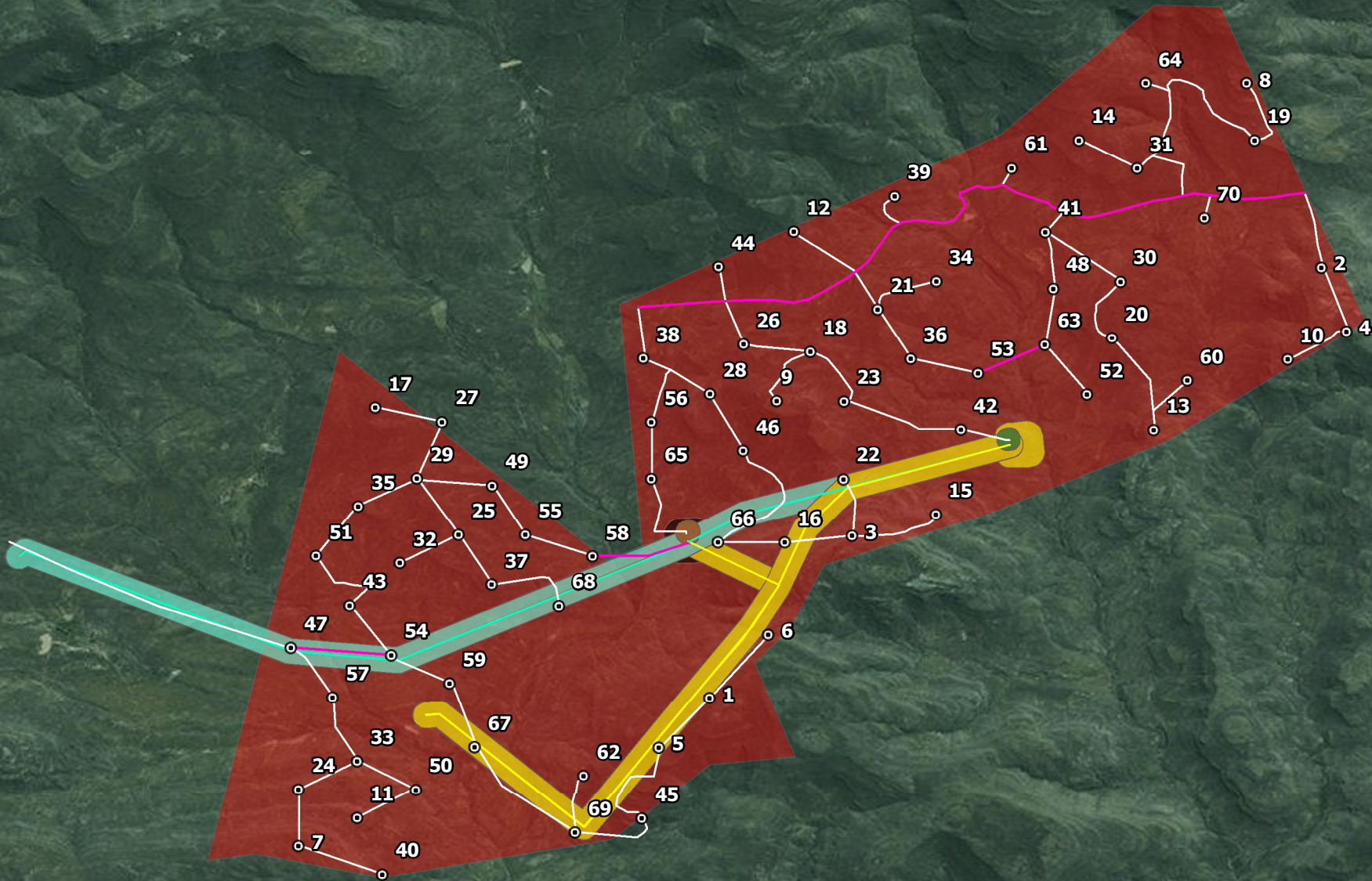
The information on this figure was derived from various digital databases available to WSP Environmental (Pty) Ltd. All information is provided "as is" and it must be acknowledged that data, information, and maps are dynamic and in a constant state of maintenance, correction and update. WSP Environmental (Pty) Ltd cannot accept any responsibility for errors, omissions, or positional accuracy where it has not been directly responsible for the production of the data referenced. There are no warranties, expressed or implied, as to the use of this information, including the warranty of merchantability or fitness for a particular purpose. Notification of any errors will be appreciated.

Source: Esri, DigitalGlobe, GeoEye, Earthstar Geographics, CNES/Airbus DS, USDA, USGS, AEX, Getmapping, Aerogrid, IGN, IGP, swisstopo, and the GIS User Community

**BIOTHERM ENERGY
(PTY) LTD**
 UPDATED TURBINE LAYOUT
 OF MARALLA EAST

Legend

-  Turbines
-  Cables and Roads
-  OH cables
-  Option 1
-  Option 1 Pref
-  Option 2
-  OM Building 1 Pref
-  OM Building 2
-  Option 1
-  Option 1 Pref
-  Option 2
-  Maralla East Wind Facility



DATA SOURCE: CHIEF DIRECTORATE: NATIONAL GEO-SPATIAL INFORMATION	
PROJECTION: WGS HARTEBESHOEK 94	
PROJECT TITLE: WIND AND SOLAR RENEWABLES	
PROJECT NO: 47579	DATE: 22/08/2016
SCALE: 1:63,000 AT A4	FIGURE NO: 9
DRAWN BY: SABELO DUBE	
REVIEWED BY: ASHLEA STRONG	



DISCLAIMER
 The information on this figure was derived from various digital databases available to WSP Environmental (Pty) Ltd. All information is provided "as is" and it must be acknowledged that data, information, and maps are dynamic and in a constant state of maintenance, correction and update. WSP Environmental (Pty) Ltd cannot accept any responsibility for errors, omissions, or positional accuracy where it has not been directly responsible for the production of the data referenced. There are no warranties, expressed or implied, as to the use of this information, including the warranty of merchantability or fitness for a particular purpose. Notification of any errors will be appreciated.

Source: Esri, DigitalGlobe, GeoEye, Earthstar Geographics, CNES/Airbus DS, USDA, USGS, AEX, Getmapping, Aerogrid, IGN, IGP, swisstopo, and the GIS User Community