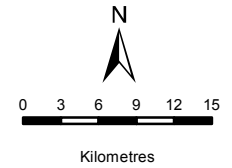


# BIOTHERM ENERGY (PTY) LTD

LOCALITY OF MARALLA & ESIZAYO FACILITIES

## Legend

- Towns
- N1
- Provinces of RSA
- Maralla East Wind Facility
- Maralla West Wind Facility
- Esizayo Wind Facility



DATA SOURCE:  
CHIEF DIRECTORATE: NATIONAL GEO-SPATIAL INFORMATION

PROJECTION: WGS HARTEBEESHOEK 94

PROJECT TITLE: WIND AND SOLAR RENEWABLES

PROJECT NO: 47579

SCALE: 1:600,000 AT A4      DATE: 22/08/2016

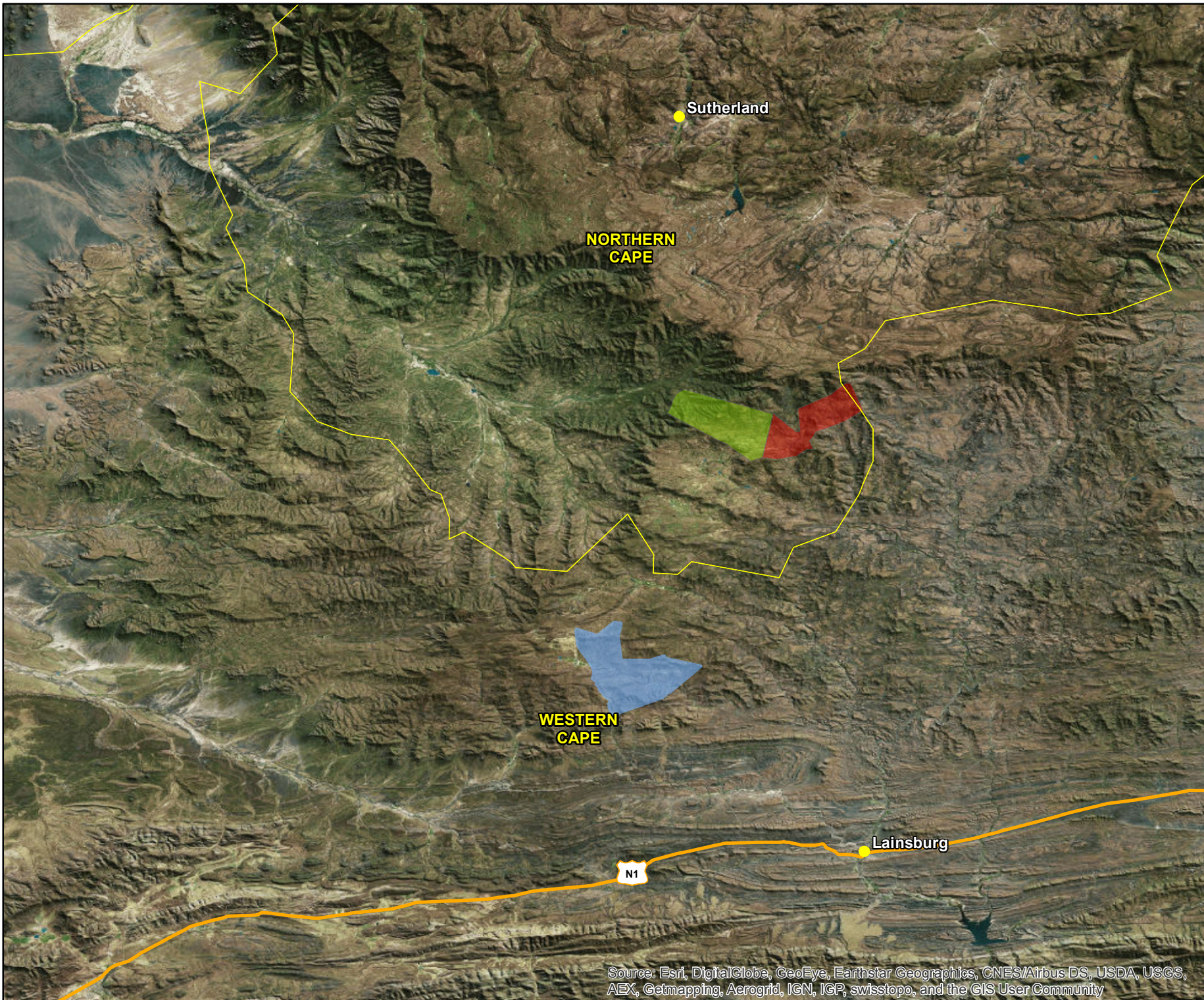
DRAWN BY: SABELO DUBE      FIGURE NO: 1

REVIEWED BY: ASHLEA STRONG



**DISCLAIMER**

The information on this figure was derived from various digital databases available to WSP Environmental (Pty) Ltd. All information is provided "as is" and it must be acknowledged that data, information, and maps are dynamic and in a constant state of maintenance, correction and update. WSP Environmental (Pty) Ltd cannot accept any responsibility for errors, omissions, or positional accuracy where it has not been directly responsible for the production of the data referenced. There are no warranties, expressed or implied, as to the use of this information, including the warranty of merchantability or fitness for a particular purpose. Notification of any errors will be appreciated.

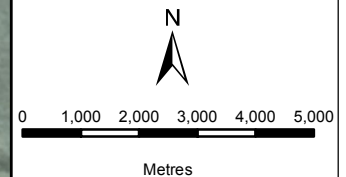


Source: Esri, DigitalGlobe, GeoEye, Earthstar Geographics, CNES/Airbus DS, USDA, USGS, AEX, Getmapping, Aerogrid, IGN, IGP, swisstopo, and the GIS User Community

**BIOTHERM ENERGY (PTY) LTD**  
LOCALITY OF MARALLA WEST

**Legend**

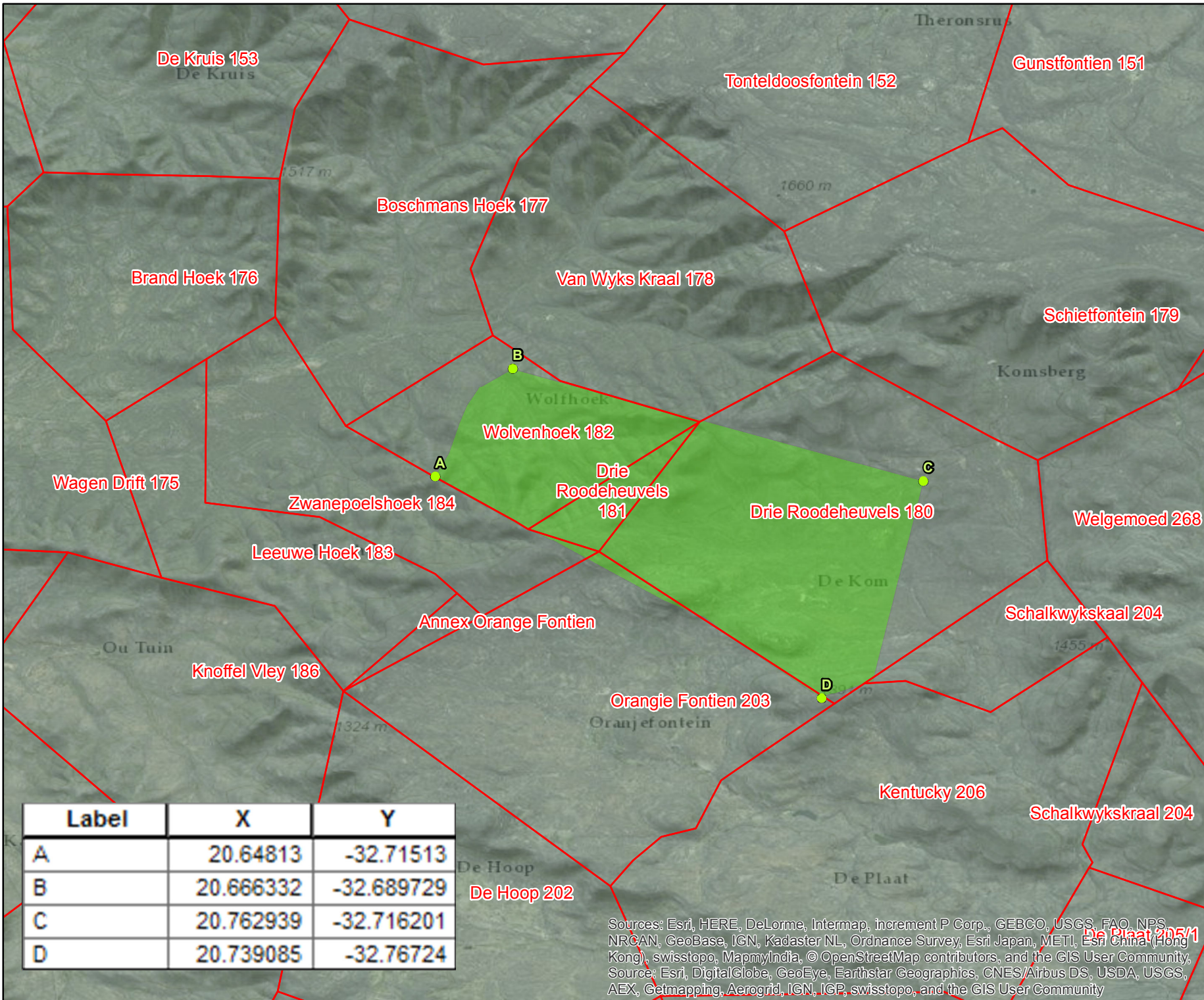
- Site Points
- Farms
- Maralla West Wind Facility



DATA SOURCE:  
CHIEF DIRECTORATE: NATIONAL GEO-SPATIAL INFORMATION  
PROJECTION: WGS HARTEBEEHOEK 94  
PROJECT TITLE: WIND AND SOLAR RENEWABLES  
PROJECT NO: 47579  
SCALE: 1:130,000 AT A4      DATE: 22/08/2016  
DRAWN BY: SABELO DUBE      FIGURE NO: 1  
REVIEWED BY: ASHLEA STRONG



**DISCLAIMER**  
The information on this figure was derived from various digital databases available to WSP Environmental (Pty) Ltd. All information is provided "as is" and it must be acknowledged that data, information, and maps are dynamic and in a constant state of maintenance, correction and update. WSP Environmental (Pty) Ltd cannot accept any responsibility for errors, omissions, or positional accuracy where it has not been directly responsible for the production of the data referenced. There are no warranties, expressed or implied, as to the use of this information, including the warranty of merchantability or fitness for a particular purpose. Notification of any errors will be appreciated.



Label	X	Y
A	20.64813	-32.71513
B	20.666332	-32.689729
C	20.762939	-32.716201
D	20.739085	-32.76724

Sources: Esri, HERE, DeLorme, Intermap, increment P Corp., GEBCO, USGS, FAO, NPS, NRCAN, GeoBase, IGN, Kadaster NL, Ordnance Survey, Esri Japan, METI, Esri China (Hong Kong), swisstopo, MapmyIndia, © OpenStreetMap contributors, and the GIS User Community.  
Source: Esri, DigitalGlobe, GeoEye, Earthstar Geographics, CNES/Airbus DS, USDA, USGS, AEX, Getmapping, Aerogrid, IGN, IGP, swisstopo, and the GIS User Community

**BIOTERM ENERGY  
(PTY) LTD**

COMPETITION 2016 RENEWABLE  
EIAs - MARALLA WEST

**Legend**

 Maralla West Wind Facility

 Farms

**Project Status**

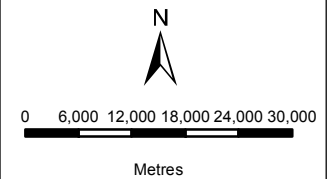
 Approved

 In Process

 PB\_R1

 Withdrawn/Lapsed

ID	Name
1	12/12/20/1583
2	12/12/20/1782
3	12/12/20/1787
4	12/12/20/1956
5	12/12/20/1966
6	12/12/20/1988
7	12/12/20/2228
8	12/12/20/2235
9	12/12/20/2328
10	12/12/20/2370
11	12/12/20/2370/1
12	12/12/20/1783/2
13	12/12/20/2370/2
14	12/12/20/2370/3
15	12/12/20/1783/2/AM1
16	12/12/20/1988/1/AM1
17	12/12/20/1966/A2
18	14/12/16/3/3/2/395



DATA SOURCE:  
CHIEF DIRECTORATE: NATIONAL GEO-  
SPATIAL INFORMATION

PROJECTION: WGS HARTBEESHOEK 94

PROJECT TITLE: WIND AND SOLAR RENEWABLES

PROJECT NO: 47579

SCALE: 1:850,000 AT A4      DATE: 22/08/2016

DRAWN BY: SABELO DUBE      FIGURE NO: 13

REVIEWED BY: ASHLEA STRONG



**DISCLAIMER**

The information on this figure was derived from various digital databases available to WSP Environmental (Pty) Ltd. All information is provided "as is" and it must be acknowledged that data, information, and maps are dynamic and in a constant state of maintenance, correction and update. WSP Environmental (Pty) Ltd cannot accept any responsibility for errors, omissions, or positional accuracy where it has not been directly responsible for the production of the data referenced. There are no warranties, expressed or implied, as to the use of this information, including the warranty of merchantability or fitness for a particular purpose. Notification of any errors will be appreciated.

Source: Esri, DigitalGlobe, GeoEye, Earthstar Geographics, CNES/Airbus DS, USDA, USGS, AEX, Getmapping, Aerogrid, IGN, IGP, swisstopo, and the GIS User Community

**BIOTHERM ENERGY  
(PTY) LTD**

TURBINE LAYOUT OF  
MARALLA WEST

**Legend**

- ⊙ Turbines
- Cables
- Roads and Cables
- Maralla West Wind Facility



0 400 800 1,200 1,600 2,000

Metres

DATA SOURCE:

CHIEF DIRECTORATE: NATIONAL GEO-  
SPATIAL INFORMATION

PROJECTION: WGS HARTEBEESHOEK 94

PROJECT TITLE: WIND AND SOLAR RENEWABLES

PROJECT NO: 47579

SCALE: 1:65,000 AT A4 DATE: 22/08/2016

DRAWN BY: SABELO DUBE FIGURE NO: 6

REVIEWED BY: ASHLEA STRONG



WWW.WSP-PB.COM

**DISCLAIMER**

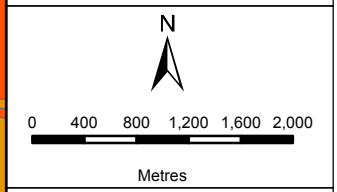
The information on this figure was derived from various digital databases available to WSP Environmental (Pty) Ltd. All information is provided "as is" and it must be acknowledged that data, information, and maps are dynamic and in a constant state of maintenance, correction and update. WSP Environmental (Pty) Ltd cannot accept any responsibility for errors, omissions, or positional accuracy where it has not been directly responsible for the production of the data referenced. There are no warranties, expressed or implied, as to the use of this information, including the warranty of merchantability or fitness for a particular purpose. Notification of any errors will be appreciated.

Source: Esri, DigitalGlobe, GeoEye, Earthstar Geographics, CNES/Airbus DS, USDA, USGS, AEX, Getmapping, Aerogrid, IGN, IGP, swisstopo, and the GIS User Community

**BIO THERM ENERGY  
(PTY) LTD**  
SENSITIVITY MAP  
OF MARALLA WEST UPDATED

**Legend**

- Powerlines
- Substations Buffer
- Substations
- Maralla West Wind Facility
- Biodiversity**
- Medium Low Sensitivity
- Medium Sensitivity
- Medium High Sensitivity
- High Sensitivity
- Very High Sensitivity

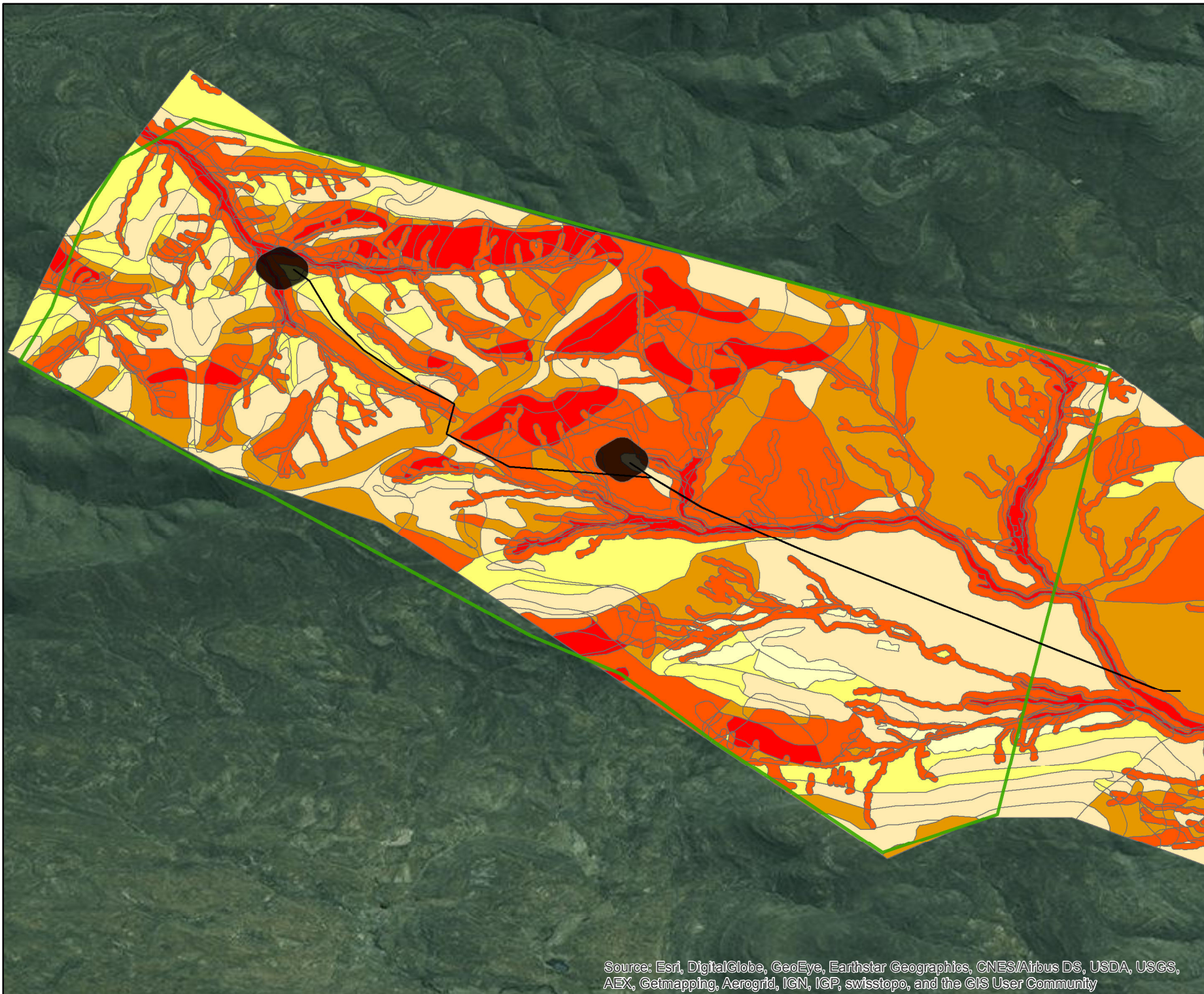


DATA SOURCE:	
CHIEF DIRECTORATE: NATIONAL GEO-SPATIAL INFORMATION	
PROJECTION: WGS HARTEBEESHOEK 94	
PROJECT TITLE: WIND AND SOLAR RENEWABLES	
PROJECT NO: 47579	
SCALE: 1:58,000 AT A4	DATE: 22/08/2016
DRAWN BY: SABELO DUBE	FIGURE NO: 14
REVIEWED BY: ASHLEA STRONG	



**DISCLAIMER**



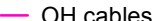




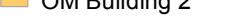




The information on this figure was derived from various digital databases available to WSP Environmental (Pty) Ltd. All information is provided "as is" and it must be acknowledged that data, information, and maps are dynamic and in a constant state of maintenance, correction and update. WSP Environmental (Pty) Ltd cannot accept any responsibility for errors, omissions, or positional accuracy where it has not been directly responsible for the production of the data referenced. There are no warranties, expressed or implied, as to the use of this information, including the warranty of merchantability or fitness for a particular purpose. Notification of any errors will be appreciated.

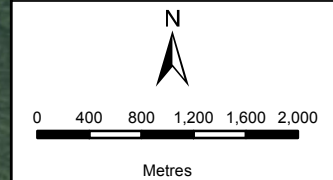


Source: Esri, DigitalGlobe, GeoEye, Earthstar Geographics, CNES/Airbus DS, USDA, USGS, AEX, Getmapping, Aerogrid, IGN, IGP, swisstopo, and the GIS User Community

**BIOTHERM ENERGY  
(PTY) LTD**  
 UPDATED TURBINE LAYOUT  
 OF MARALLA WEST

**Legend**

-  Turbines
-  Cables and Roads
-  OH cables
-  Option 1 Pref
-  Option 1
-  Option 2
-  OM Building 2
-  OM building 1 pref
-  Option 2
-  Substation A
-  Substation B
-  Maralla West Wind Facility



DATA SOURCE:	
CHIEF DIRECTORATE: NATIONAL GEO-SPATIAL INFORMATION	
PROJECTION: WGS HARTEBEESSHOEK 94	
PROJECT TITLE: WIND AND SOLAR RENEWABLES	
PROJECT NO: 47579	
SCALE: 1:58,000 AT A4	DATE: 22/08/2016
DRAWN BY: SABELO DUBE	FIGURE NO: 8
REVIEWED BY: ASHLEA STRONG	



**DISCLAIMER**  
 The information on this figure was derived from various digital databases available to WSP Environmental (Pty) Ltd. All information is provided "as is" and it must be acknowledged that data, information, and maps are dynamic and in a constant state of maintenance, correction and update. WSP Environmental (Pty) Ltd cannot accept any responsibility for errors, omissions, or positional accuracy where it has not been directly responsible for the production of the data referenced. There are no warranties, expressed or implied, as to the use of this information, including the warranty of merchantability or fitness for a particular purpose. Notification of any errors will be appreciated.



Source: Esri, DigitalGlobe, GeoEye, Earthstar Geographics, CNES/Airbus DS, USDA, USGS, AEX, Getmapping, Aerogrid, IGN, IGP, swisstopo, and the GIS User Community