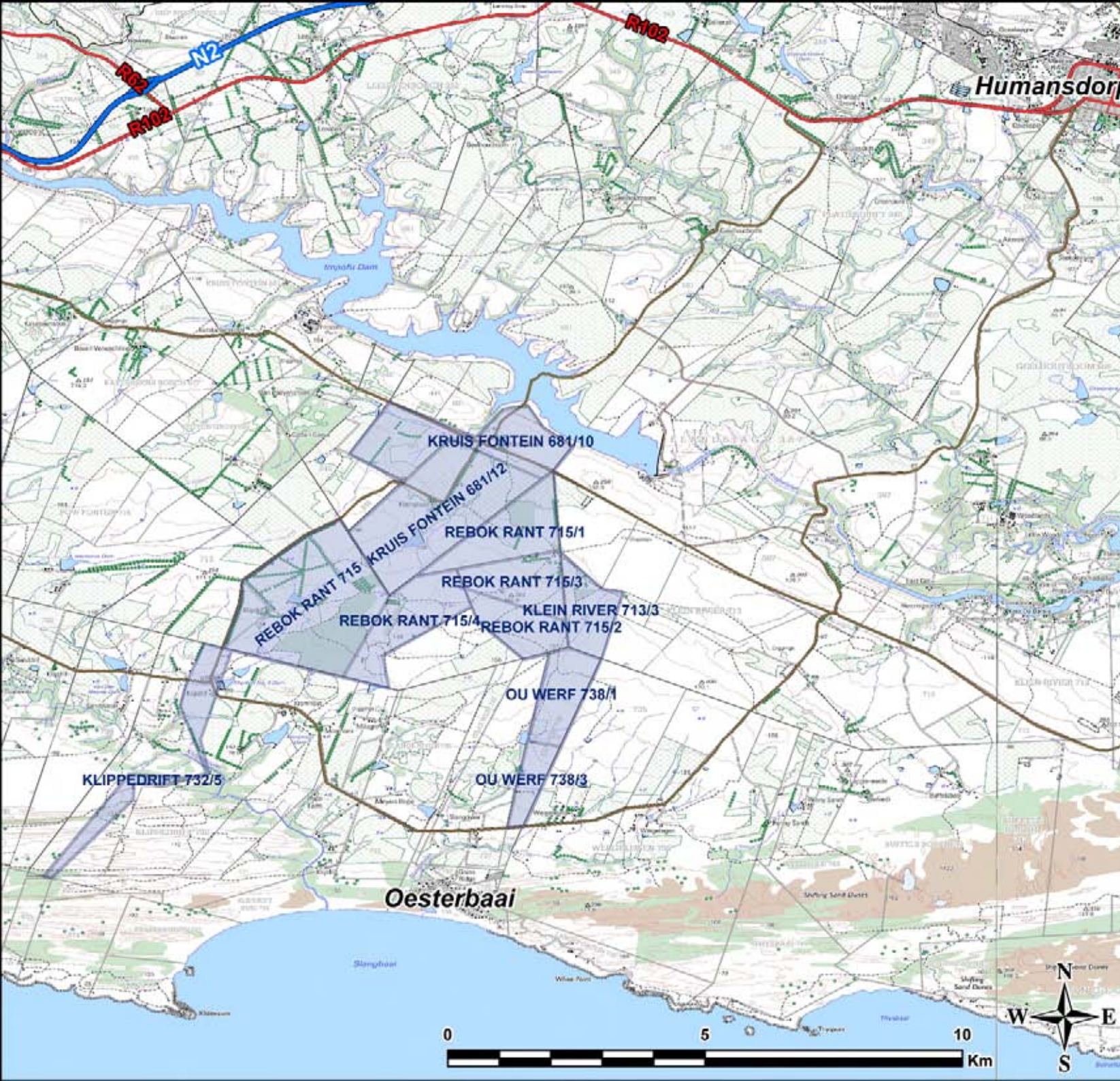


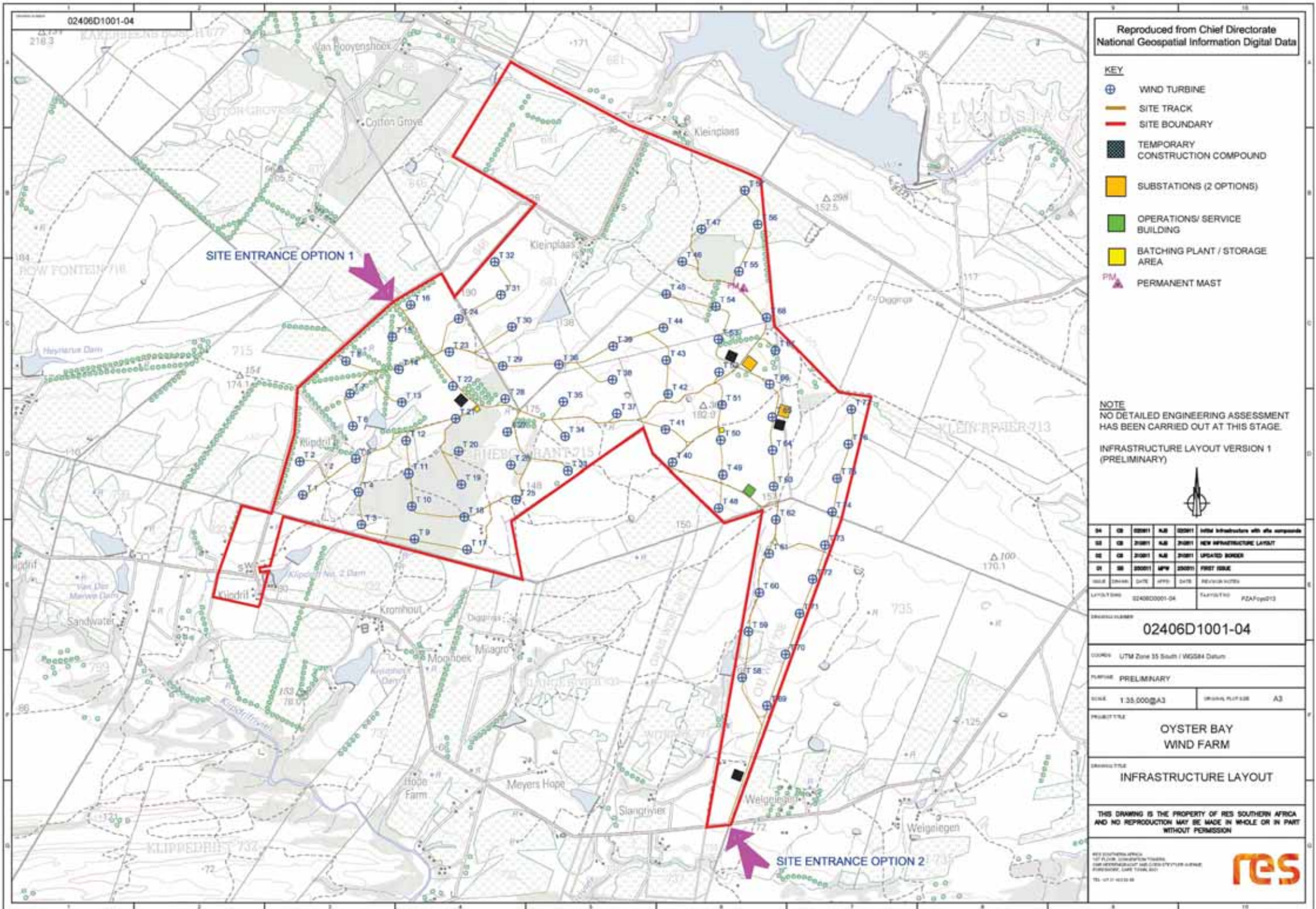
# Oyster Bay Wind Energy Facility

## Locality Map

### Legend

-  National Road
-  Regional Road
-  Secondary Road
-  Farm Portions





02406D1001-04

Reproduced from Chief Directorate  
National Geospatial Information Digital Data

- KEY**
- WIND TURBINE
  - SITE TRACK
  - SITE BOUNDARY
  - TEMPORARY CONSTRUCTION COMPOUND
  - SUBSTATIONS (2 OPTIONS)
  - OPERATIONS/ SERVICE BUILDING
  - BATCHING PLANT / STORAGE AREA
  - PERMANENT MAST

**NOTE**  
NO DETAILED ENGINEERING ASSESSMENT  
HAS BEEN CARRIED OUT AT THIS STAGE.

INFRASTRUCTURE LAYOUT VERSION 1  
(PRELIMINARY)



04	02	020011	N/A	020011	Initial Infrastructure with site compounds
05	02	210011	N/A	210011	NEW INFRASTRUCTURE LAYOUT
06	02	210011	N/A	210011	UPDATED BORDER
07	02	220011	MPW	220011	FIRST ISSUE

ISSUE	DATE	DATE	DATE	DATE	REVISION NUMBER
-------	------	------	------	------	-----------------

LAYOUT NO: 02406D0001-04      PLAN NO: P2AFcy013

PROJECT NUMBER: **02406D1001-04**

COORDINATE: UTM Zone 35 South / WGS84 Datum

PHASE: PRELIMINARY

SCALE: 1:35,000@A3      DRAWING PLAT SIZE: A3

PROJECT TITLE: **OYSTER BAY WIND FARM**

DRAWING TITLE: **INFRASTRUCTURE LAYOUT**

THIS DRAWING IS THE PROPERTY OF RES SOUTHERN AFRICA  
AND NO REPRODUCTION MAY BE MADE IN WHOLE OR IN PART  
WITHOUT PERMISSION

RES SOUTHERN AFRICA  
127 Aloor, Sandton Road  
100 WILLOWDALE RD, CLIFTON 2191 (SOUTH AFRICA)  
RESERVED. LAST TOTAL 201




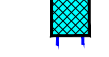




TEL: 011 4322 88



DRAWING NUMBER  
02406D1001-06

Reproduced from Chief Directorate  
National Geospatial Information Digital Data

KEY

-  T xx WIND TURBINE WITH CRANE HARDSTANDING
-  SITE TRACK
-  SITE BOUNDARY
-  TEMPORARY CONSTRUCTION COMPOUND
-  SUBSTATIONS (2 OPTIONS)
-  OPERATIONS/ SERVICE BUILDING
-  BATCHING PLANT / STORAGE AREA
-  PM PERMANENT MAST

NOTE  
NO DETAILED ENGINEERING ASSESSMENT  
HAS BEEN CARRIED OUT AT THIS STAGE.

INFRASTRUCTURE LAYOUT VERSION 2



06	SB	031111	MPW	031111	MINOR AMENDMENT
05	CB	020911	NJB	020911	Updated Infrastructure layout
04	CB	020911	NJB	020911	Initial Infrastructure with site compounds
03	CB	310811	NJB	310811	NEW INFRASTRUCTURE LAYOUT
02	CB	310811	NJB	310811	UPDATED BORDER
01	SB	250511	MPW	250511	FIRST ISSUE
ISSUE	DRAWN	DATE	APPD	DATE	REVISION NOTES
LAYOUT DWG	02406D0001-05		T-LAYOUT NO.	PZAF0ys021	

DRAWING NUMBER  
**02406D1001-06**

COORDS UTM Zone 35 South / WGS84 Datum

PURPOSE PRELIMINARY


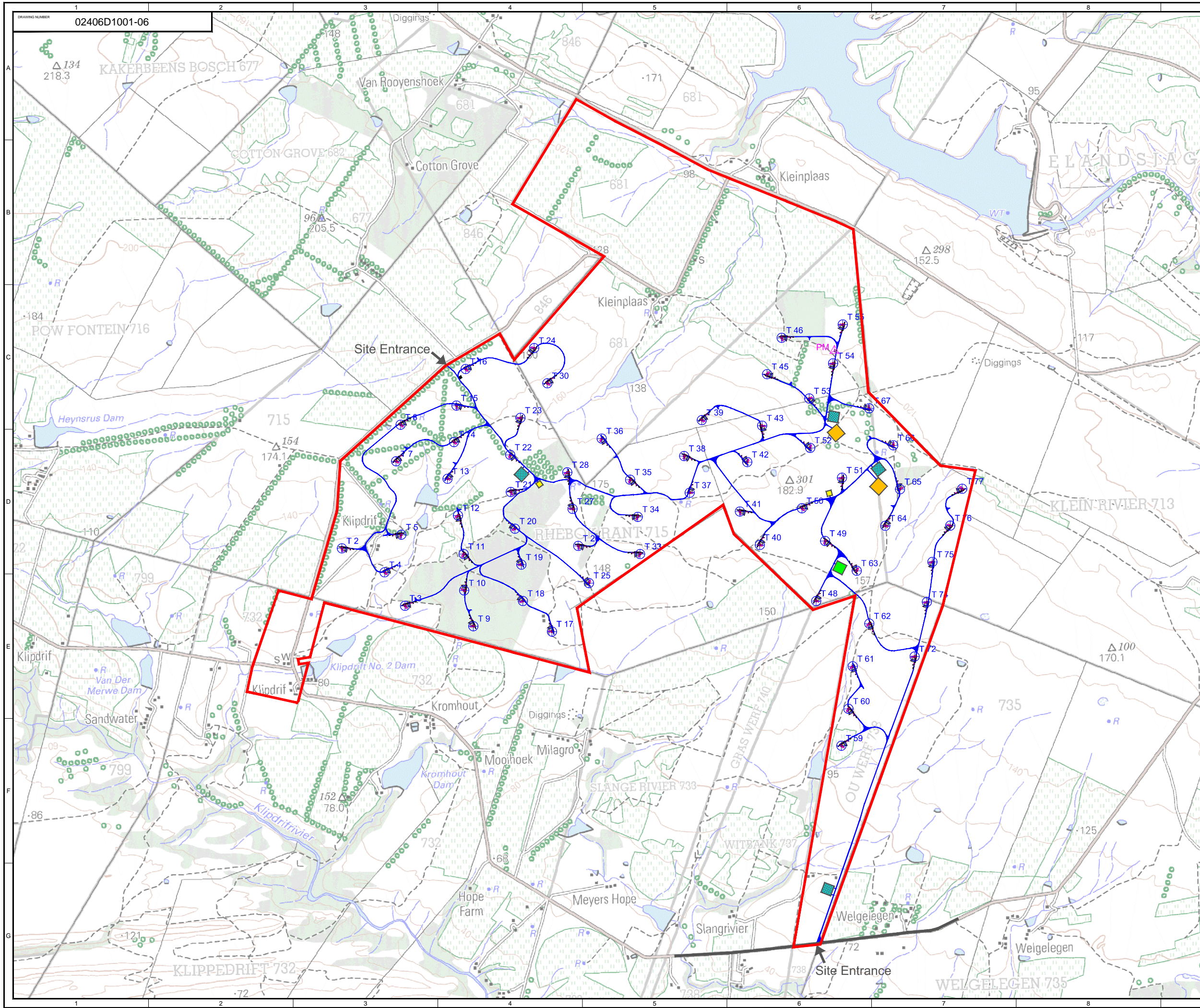
SCALE 1:35,000@A3 ORIGINAL PLOT SIZE A3

PROJECT TITLE  
**OYSTER BAY  
WIND FARM**

DRAWING TITLE  
**INFRASTRUCTURE LAYOUT**

THIS DRAWING IS THE PROPERTY OF RES SOUTHERN AFRICA AND NO  
REPRODUCTION MAY BE MADE IN WHOLE OR IN PART WITHOUT  
PERMISSION

RES SOUTHERN AFRICA  
1ST FLOOR, CONVENTION TOWERS,  
CNR HEERENGRACHT AND COEN STEYLER AVENUE,  
FORESHORE, CAPE TOWN, 8001  
TEL +27 21 403 83 85

- LEGEND**
- National Road
  - Arterial/Main Road
  - Secondary Road
  - Perennial River
  - Non-perennial River
  - Dam/Waterbody
  - Major Distribution Power Line
  - Distribution Substation
  - Railway Line
  - Town/Built-up Area
  - Settlement/Homestead
  - Proposed Farms for WEF

- PROPOSED WEF LAYOUT**
- Oyster Bay WEF Wind Turbine Positions
  - Power Line Alternatives**
    - Western Alternative
    - Central Alternative
    - Eastern Alternative
  - On-site Substation Alternatives (1 - B04 and 2 - Kromrivier)
  - Internal Access Roads

**SHADED RELIEF/TOPOGRAPHY**  
Elevation above sea level (m)

50	250	450	650	850
100	300	500	700	900
150	350	550	750	950
200	400	600	800	1000



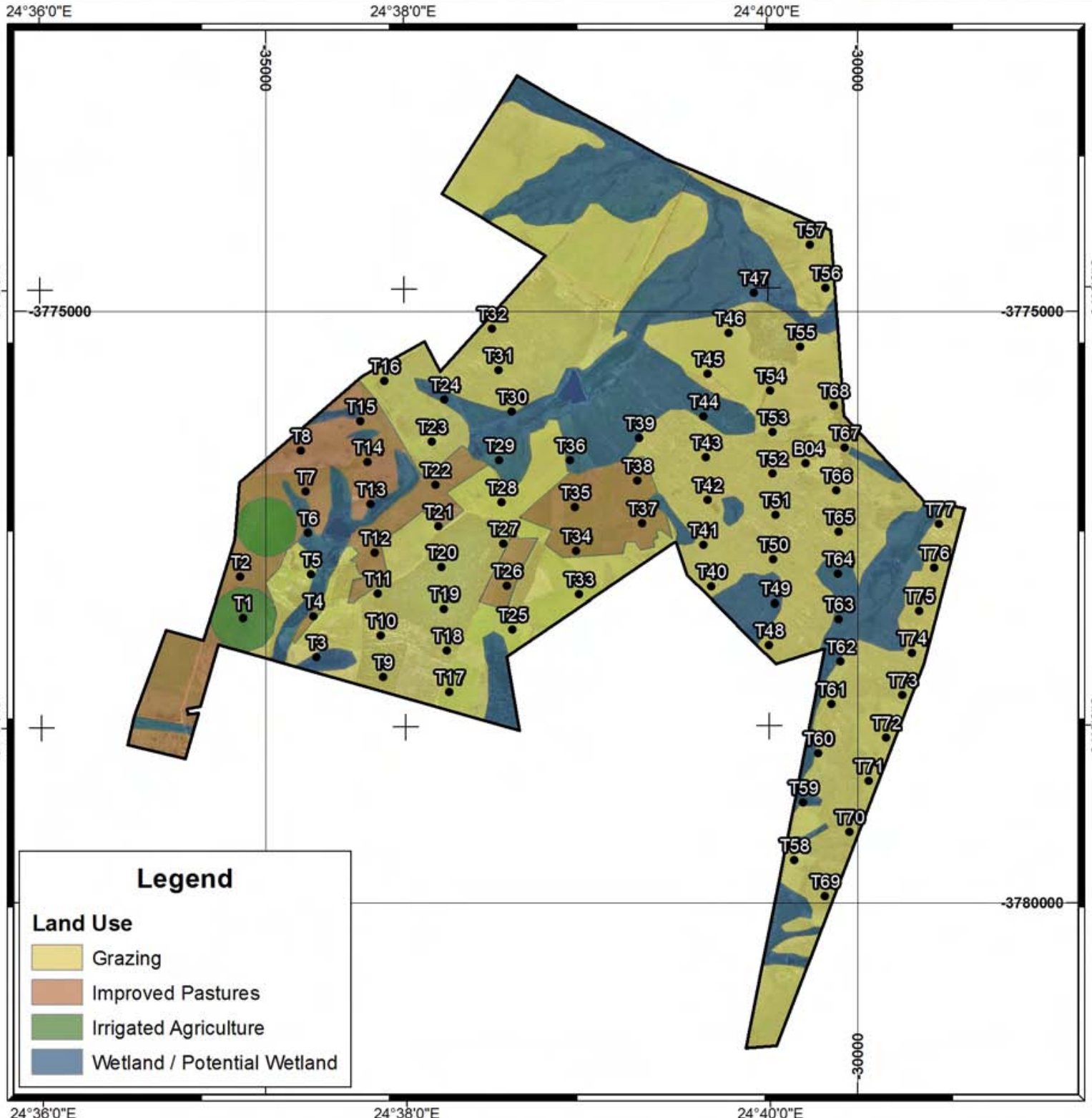
**Proposed Oyster Bay Wind Energy Facility**



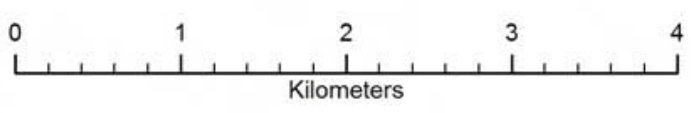
Lourens G van Zyl  
(Mobile) +27 (0)76 371 1151  
(Work tel) +27 (0)12 993 0969  
(Email) lourens@terrasoil.co.za

# OYSTER BAY

## Land Use Map



Projection - Gauss Conform  
Datum - Hartebeeshoek 1994  
Reference Ellipsoid - WGS 1984  
Central Meridian - 25



# Oyster Bay Wind Energy Facility

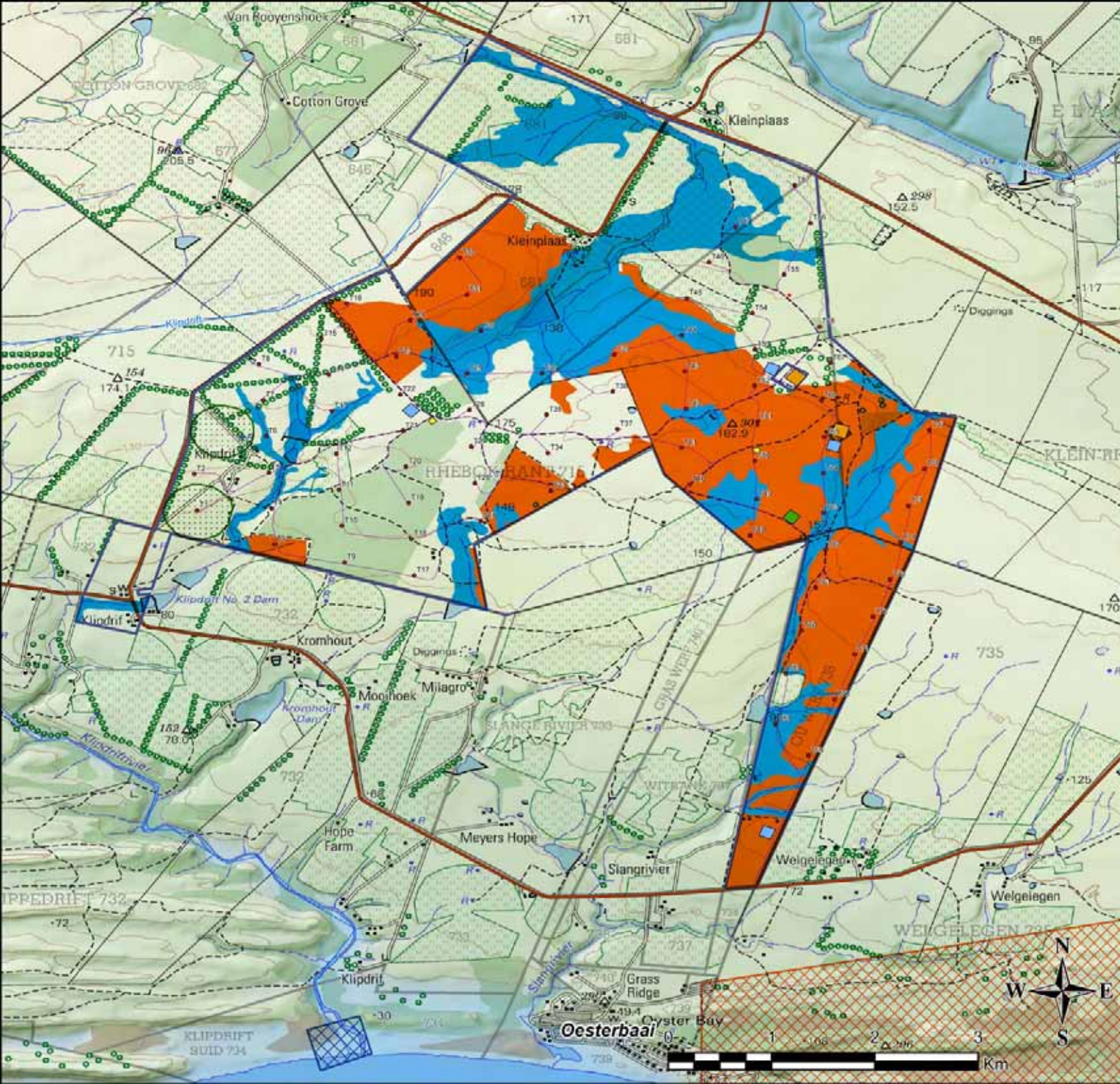
## Sensitivity Map

### Legend

- Oyster Bay Turbines
- Internal Roads
- Batching Plant / Storage Area
- Operations / Service Building
- Permanent Mast
- Substation Options
- Temporary Construction Compound
- Secondary Road
- Perennial River
- - - Non-perennial River
- Site Boundary

### Sensitivity

- Areas of remaining natural vegetation - fynbos
- Wetland
- Shell Middens
- Thyspunt Cultural Landscape
- Irrigated Agriculture



# Oyster Bay Wind Energy Facility

## Sensitivity Map

### Legend

- Oyster Bay Turbines
- Internal Roads
- Batching Plant / Storage Area
- Operations / Service Building
- Permanent Mast
- Substation Options
- Temporary Construction Compound
- Secondary Road
- Perennial River
- - - Non-perennial River
- Site Boundary

### Sensitivity

- Areas of remaining natural vegetation - fynbos
- Wetland
- Shell Middens
- Thyspunt Cultural Landscape
- Irrigated Agriculture

