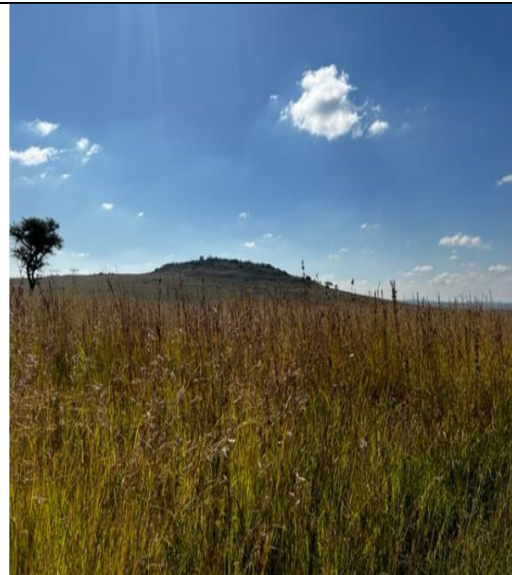


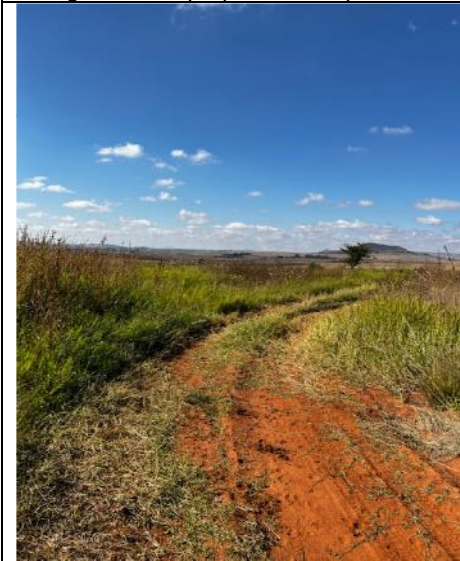
Site Photographs : 27 May 2022



View of the existing powerline 400kV powerline routing (along which the proposed 88kV powerline will traverse).



View along the proposed 88kV powerline corridor



View of existing access roads to the existing Bloedrivier substation



View of the existing Bloedrivier Substation



View along the proposed 88kV powerline corridor



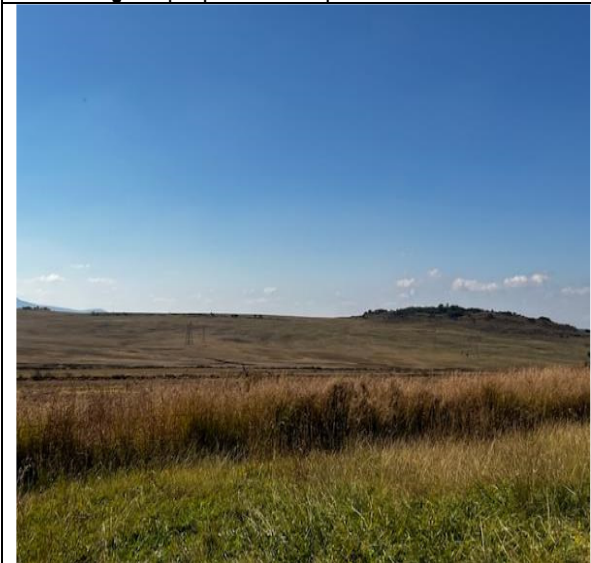
View along the proposed 88kV powerline corridor



View along the proposed 88kV powerline corridor



View along the proposed 88kV powerline corridor



View along the proposed 88kV powerline corridor



View along the proposed 88kV powerline corridor