

**SCREENING REPORT FOR AN ENVIRONMENTAL AUTHORIZATION OR
FOR A PART TWO AMENDMENT OF AN ENVIRONMENTAL AUTHORISATION
AS REQUIRED BY THE 2014 EIA REGULATIONS – PROPOSED SITE
ENVIRONMENTAL SENSITIVITY**

EIA Reference number: TBC

Project name: Wind Relic - Wind Garden (East 1)

Project title: Wind Relic - Wind Garden (East 1)

Date screening report generated: 31/08/2020 08:53:45

Applicant: Wind Garden (Pty) Ltd

Compiler: Lisa Opperman

Compiler signature:

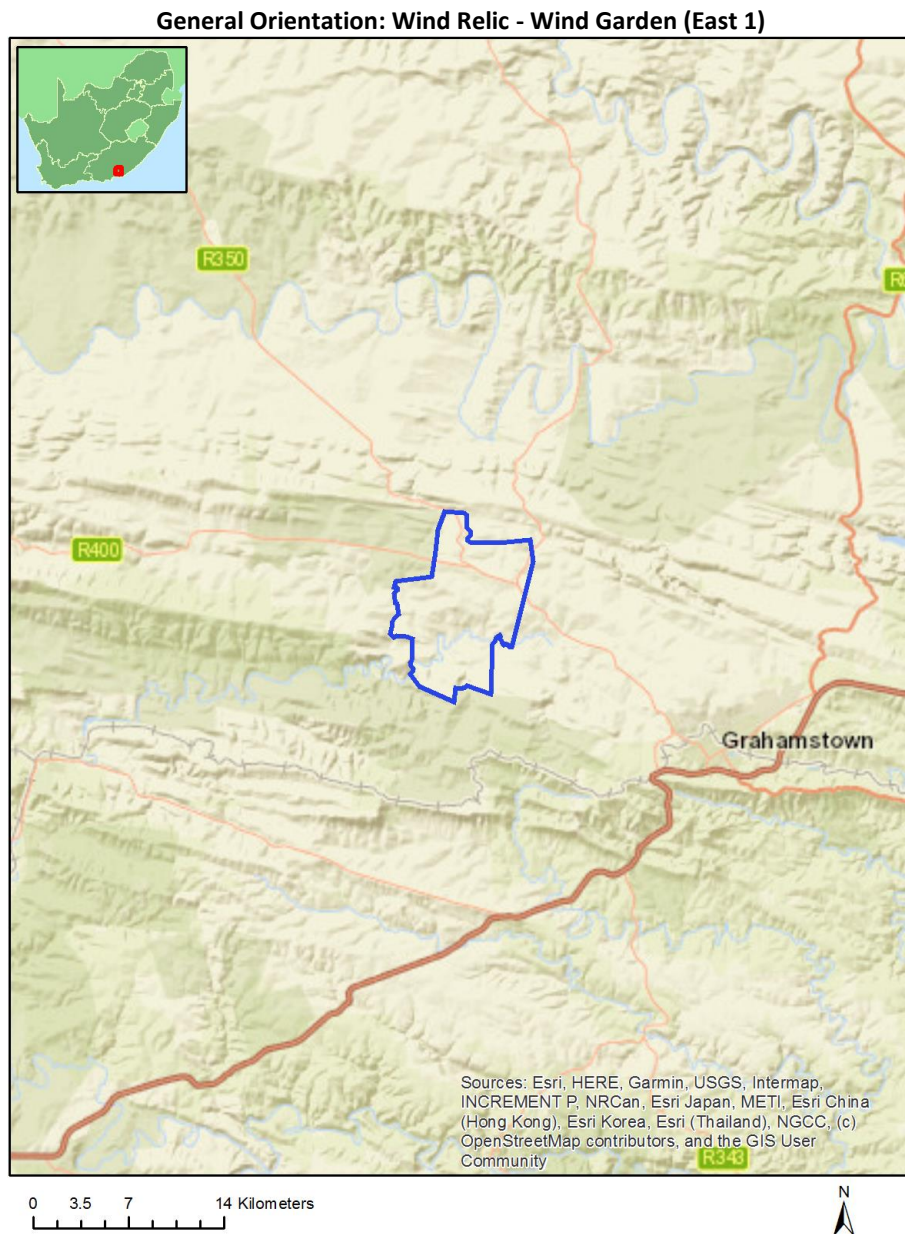
.....

Table of Contents

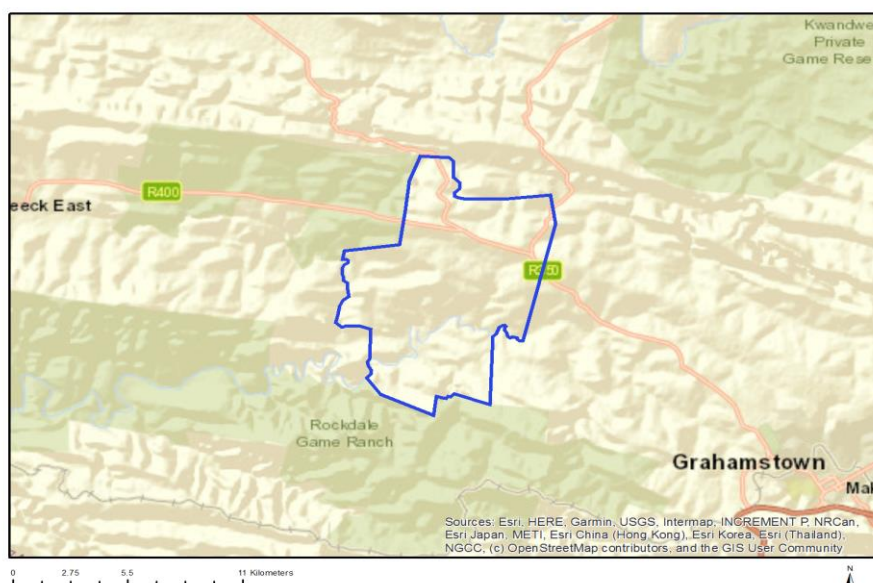
- Proposed Project Location 3
 - Orientation map 1: General location 3
- Map of proposed site and relevant area(s) 4
 - Cadastral details of the proposed site 4
 - Wind and Solar developments with an approved Environmental Authorisation or applications under consideration within 30 km of the proposed area 5
 - Environmental Management Frameworks relevant to the application 5
- Environmental screening results and assessment outcomes 5
 - Relevant development incentives, restrictions, exclusions or prohibitions 5
- Map indicating proposed development footprint within applicable development incentive, restriction, exclusion or prohibition zones 7
 - Proposed Development Area Environmental Sensitivity 7
 - Specialist assessments identified 8
- Results of the environmental sensitivity of the proposed area 10
 - MAP OF RELATIVE AGRICULTURE THEME SENSITIVITY 10
 - MAP OF RELATIVE ANIMAL SPECIES THEME SENSITIVITY 11
 - MAP OF RELATIVE AQUATIC BIODIVERSITY THEME SENSITIVITY 12
 - MAP OF RELATIVE ARCHAEOLOGICAL AND CULTURAL HERITAGE THEME SENSITIVITY 13
 - MAP OF RELATIVE AVIAN (WIND) THEME SENSITIVITY 14
 - MAP OF RELATIVE BATS (WIND) THEME SENSITIVITY 15
 - MAP OF RELATIVE CIVIL AVIATION (WIND) THEME SENSITIVITY 16
 - MAP OF RELATIVE DEFENCE (WIND) THEME SENSITIVITY 17
 - MAP OF RELATIVE FLICKER THEME SENSITIVITY 18
 - MAP OF RELATIVE LANDSCAPE (WIND) THEME SENSITIVITY 19
 - MAP OF RELATIVE NOISE THEME SENSITIVITY 20
 - MAP OF RELATIVE PALEONTOLOGY THEME SENSITIVITY 21
 - MAP OF RELATIVE PLANT SPECIES THEME SENSITIVITY 22
 - MAP OF RELATIVE RFI (WIND) THEME SENSITIVITY 23
 - MAP OF RELATIVE TERRESTRIAL BIODIVERSITY THEME SENSITIVITY 24

Proposed Project Location

Orientation map 1: General location



Map of proposed site and relevant area(s)



Cadastral details of the proposed site

Property details:

| No | Farm Name | Farm/ Erf No | Portion | Latitude | Longitude | Property Type |
|----|--------------------|--------------|---------|--------------|--------------|---------------|
| 1 | | 662 | 0 | 33°11'14.12S | 26°19'20.05E | Farm |
| 2 | DOORNFONTEIN | 268 | 0 | 33°16'54.35S | 26°18'16.14E | Farm |
| 3 | HILTON | 182 | 0 | 33°14'58.41S | 26°21'16.4E | Farm |
| 4 | THORN KLOOF | 554 | 0 | 33°15'31.9S | 26°18'29.93E | Farm |
| 5 | CLIFTON | 132 | 0 | 33°11'4.65S | 26°22'52.28E | Farm |
| 6 | KRUISFONTEIN | 252 | 0 | 33°17'50.22S | 26°22'43.35E | Farm |
| 7 | YELLOW WOODS ANNEX | 178 | 0 | 33°18'9.31S | 26°19'48.25E | Farm |
| 8 | HILTON | 182 | 0 | 33°14'55.37S | 26°21'18.58E | Farm |
| 9 | HILTON | 182 | 0 | 33°15'40.68S | 26°22'2.29E | Farm |
| 10 | TABLE HILL | 187 | 0 | 33°14'55.66S | 26°25'20.38E | Farm |
| 11 | | 695 | 0 | 33°12'47.48S | 26°18'28.18E | Farm |
| 12 | | 697 | 0 | 33°14'36.04S | 26°18'28.05E | Farm |
| 13 | BRACK KLOOF | 183 | 0 | 33°13'29.68S | 26°22'31.51E | Farm |
| 14 | BRACK KLOOF | 183 | 1 | 33°12'44.99S | 26°23'13.47E | Farm Portion |
| 15 | | 172 | 0 | 33°14'5.81S | 26°18'19.25E | Farm Portion |
| 16 | HILTON | 182 | 3 | 33°15'31.7S | 26°21'38.53E | Farm Portion |
| 17 | HILTON | 182 | 2 | 33°16'14.61S | 26°20'44.85E | Farm Portion |
| 18 | BRACK KLOOF | 183 | 0 | 33°13'38.93S | 26°22'22.82E | Farm Portion |
| 19 | HILTON | 182 | 7 | 33°14'58.3S | 26°21'16.63E | Farm Portion |
| 20 | GROENE FOUNTAIN | 11 | 182 | 33°14'12.28S | 26°19'21.66E | Farm Portion |
| 21 | VAALE KRANS | 134 | 6 | 33°12'34.51S | 26°18'56.07E | Farm Portion |
| 22 | HILTON | 182 | 4 | 33°16'7.11S | 26°22'25.56E | Farm Portion |
| 23 | HILTON | 182 | 9 | 33°15'4.71S | 26°22'13.39E | Farm Portion |
| 24 | HILTON | 182 | 0 | 33°14'42.83S | 26°20'3.71E | Farm Portion |
| 25 | KRUISFONTEIN | 252 | 0 | 33°17'42.64S | 26°23'0.85E | Farm Portion |
| 26 | | 695 | 0 | 33°12'44.77S | 26°18'28.2E | Farm Portion |
| 27 | BURGHERS DRIFT | 4 | 172 | 33°13'43.89S | 26°18'23.32E | Farm Portion |
| 28 | CLIFTON | 132 | 1 | 33°11'37.8S | 26°24'32.59E | Farm Portion |

| | | | | | | |
|----|--------------------|-----|----|--------------|--------------|--------------|
| 29 | CLIFTON | 132 | 4 | 33°11'50.66S | 26°22'22.36E | Farm Portion |
| 30 | THORN KLOOF | 554 | 0 | 33°15'31.9S | 26°18'29.93E | Farm Portion |
| 31 | CLIFTON | 132 | 5 | 33°10'38.62S | 26°23'3.34E | Farm Portion |
| 32 | YELLOW WOODS ANNEX | 178 | 2 | 33°17'39.37S | 26°20'25.88E | Farm Portion |
| 33 | HILTON | 182 | 1 | 33°14'54.53S | 26°21'19.3E | Farm Portion |
| 34 | TABLE HILL | 187 | 1 | 33°14'16.81S | 26°24'45.64E | Farm Portion |
| 35 | HILTON | 182 | 5 | 33°13'30.82S | 26°20'1.22E | Farm Portion |
| 36 | HILTON | 182 | 10 | 33°15'24.24S | 26°20'12.95E | Farm Portion |
| 37 | HILTON | 182 | 8 | 33°14'20.06S | 26°20'49.34E | Farm Portion |
| 38 | KRUISFONTEIN | 252 | 1 | 33°16'32.78S | 26°21'36.77E | Farm Portion |
| 39 | DOORNFONTEIN | 268 | 0 | 33°16'48.28S | 26°18'54.62E | Farm Portion |
| 40 | | 697 | 0 | 33°14'33.33S | 26°18'28.07E | Farm Portion |
| 41 | HILTON | 182 | 12 | 33°14'13.27S | 26°20'4.42E | Farm Portion |
| 42 | | 662 | 0 | 33°11'19.77S | 26°19'20.01E | Farm Portion |

Development footprint¹ vertices:
No development footprint(s) specified.

Wind and Solar developments with an approved Environmental Authorisation or applications under consideration within 30 km of the proposed area

No nearby wind or solar developments found.

Environmental Management Frameworks relevant to the application

No intersections with EMF areas found.

Environmental screening results and assessment outcomes

The following sections contain a summary of any development incentives, restrictions, exclusions or prohibitions that apply to the proposed development site as well as the most environmental sensitive features on the site based on the site sensitivity screening results for the application classification that was selected. The application classification selected for this report is: Utilities Infrastructure | Electricity | Generation | Renewable | Wind | Wind.

Relevant development incentives, restrictions, exclusions or prohibitions

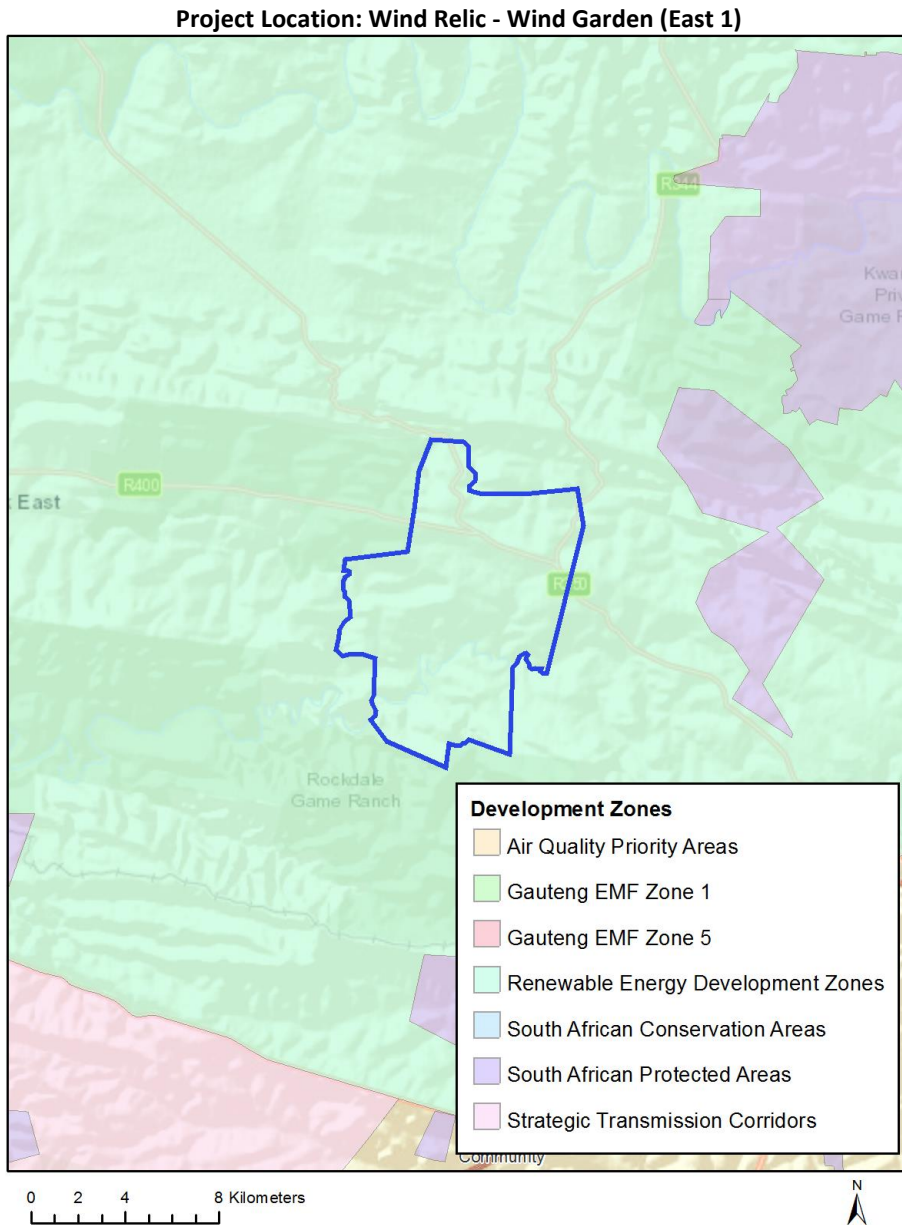
The following development incentives, restrictions, exclusions or prohibitions and their implications that apply to this site are indicated below.

| Incentive, | Implication |
|------------|-------------|
|------------|-------------|

¹ “development footprint”, means the area within the site on which the development will take place and includes all ancillary developments for example roads, power lines, boundary walls, paving etc. which require vegetation clearance or which will be disturbed and for which the application has been submitted.

| | |
|--|---|
| restricti on or prohibit ion | |
| Strategic Transmiss ion Corridor- Eastern corridor | https://screening.environment.gov.za/ScreeningDownloads/DevelopmentZones/GNR_350_of_13_April_2017.pdf |
| Renewabl e energy developm ent zones 3- Cookhous e | https://screening.environment.gov.za/ScreeningDownloads/DevelopmentZones/GNR_350_of_13_April_2017.pdf |

Map indicating proposed development footprint within applicable development incentive, restriction, exclusion or prohibition zones



Proposed Development Area Environmental Sensitivity

The following summary of the development site environmental sensitivities is identified. Only the highest environmental sensitivity is indicated. The footprint environmental sensitivities for the proposed development footprint as identified, are indicative only and must be verified on site by a suitably qualified person before the specialist assessments identified below can be confirmed.

| Theme | Very High sensitivity | High sensitivity | Medium sensitivity | Low sensitivity |
|----------------------|-----------------------|------------------|--------------------|-----------------|
| Agriculture Theme | | X | | |
| Animal Species Theme | | X | | |

| | | | | |
|--|---|---|---|--|
| Aquatic Biodiversity Theme | X | | | |
| Archaeological and Cultural Heritage Theme | | X | | |
| Avian (Wind) Theme | | X | | |
| Bats (Wind) Theme | X | | | |
| Civil Aviation (Wind) Theme | | | X | |
| Defence (Wind) Theme | | X | | |
| Flicker Theme | X | | | |
| Landscape (Wind) Theme | X | | | |
| Noise Theme | X | | | |
| Paleontology Theme | | X | | |
| Plant Species Theme | | | X | |
| RFI (Wind) Theme | | X | | |
| Terrestrial Biodiversity Theme | X | | | |

Specialist assessments identified

Based on the selected classification, and the environmental sensitivities of the proposed development footprint, the following list of specialist assessments have been identified for inclusion in the assessment report. It is the responsibility of the EAP to confirm this list and to motivate in the assessment report, the reason for not including any of the identified specialist study including the provision of photographic evidence of the site situation.

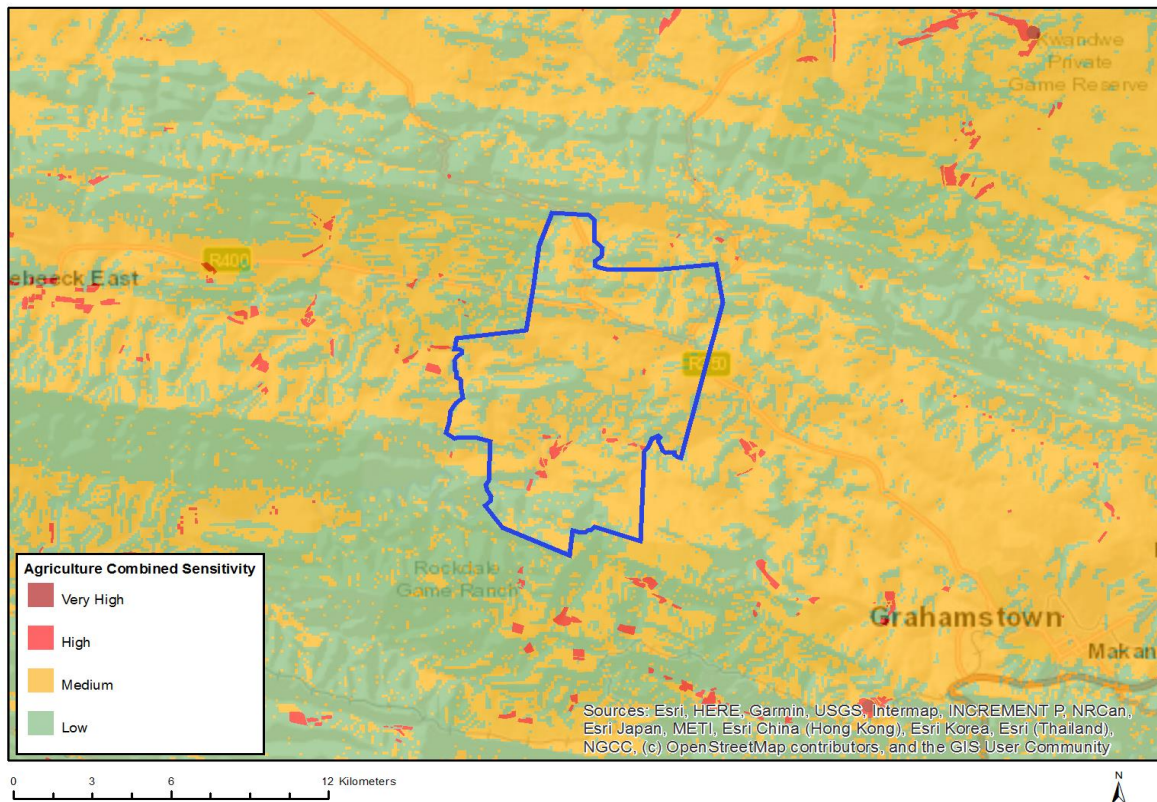
| N o | Specialist assessment | Assessment Protocol |
|------------|--|---|
| 1 | Agricultural Impact Assessment | https://screening.environment.gov.za/ScreeningDownloads/AssessmentProtocols/DraftGazetted_Agriculture_Assessment_Protocols.pdf |
| 2 | Landscape/Visual Impact Assessment | https://screening.environment.gov.za/ScreeningDownloads/AssessmentProtocols/DraftGazetted_General_Requirement_Assessment_Protocols.pdf |
| 3 | Archaeological and Cultural Heritage Impact Assessment | https://screening.environment.gov.za/ScreeningDownloads/AssessmentProtocols/DraftGazetted_General_Requirement_Assessment_Protocols.pdf |
| 4 | Palaeontology Impact Assessment | https://screening.environment.gov.za/ScreeningDownloads/AssessmentProtocols/DraftGazetted_General_Requirement_Assessment_Protocols.pdf |
| 5 | Terrestrial Biodiversity Impact Assessment | https://screening.environment.gov.za/ScreeningDownloads/AssessmentProtocols/DraftGazetted_Terrestrial_Biodiversity_Assessment_Protocols.pdf |

| | | |
|----|--|---|
| | ment | |
| 6 | Aquatic Biodiversity Impact Assessment | https://screening.environment.gov.za/ScreeningDownloads/AssessmentProtocols/DraftGazetted_Aquatic_Biodiversity_Assessment.pdf |
| 7 | Avian Impact Assessment | https://screening.environment.gov.za/ScreeningDownloads/AssessmentProtocols/DraftGazetted_General_Requirement_Assessment_Protocols.pdf |
| 8 | Civil Aviation Assessment | https://screening.environment.gov.za/ScreeningDownloads/AssessmentProtocols/DraftGazetted_Civil_Aviation_Installations_Assessment_Protocols.pdf |
| 9 | Defense Assessment | https://screening.environment.gov.za/ScreeningDownloads/AssessmentProtocols/DraftGazetted_Defence_Installations_Assessment_Protocols.pdf |
| 10 | RFI Assessment | https://screening.environment.gov.za/ScreeningDownloads/AssessmentProtocols/DraftGazetted_General_Requirement_Assessment_Protocols.pdf |
| 11 | Noise Impact Assessment | https://screening.environment.gov.za/ScreeningDownloads/AssessmentProtocols/DraftGazetted_Noise_Impacts_Assessment_Protocols.pdf |
| 12 | Flicker Assessment | https://screening.environment.gov.za/ScreeningDownloads/AssessmentProtocols/DraftGazetted_General_Requirement_Assessment_Protocols.pdf |
| 13 | Traffic Impact Assessment | https://screening.environment.gov.za/ScreeningDownloads/AssessmentProtocols/DraftGazetted_General_Requirement_Assessment_Protocols.pdf |
| 14 | Geotechnical Assessment | https://screening.environment.gov.za/ScreeningDownloads/AssessmentProtocols/DraftGazetted_General_Requirement_Assessment_Protocols.pdf |
| 15 | Socio-Economic Assessment | https://screening.environment.gov.za/ScreeningDownloads/AssessmentProtocols/DraftGazetted_General_Requirement_Assessment_Protocols.pdf |
| 16 | Plant Species Assessment | https://screening.environment.gov.za/ScreeningDownloads/AssessmentProtocols/DraftGazetted_General_Requirement_Assessment_Protocols.pdf |
| 17 | Animal Species Assessment | https://screening.environment.gov.za/ScreeningDownloads/AssessmentProtocols/DraftGazetted_General_Requirement_Assessment_Protocols.pdf |

Results of the environmental sensitivity of the proposed area.

The following section represents the results of the screening for environmental sensitivity of the proposed site for relevant environmental themes associated with the project classification. It is the duty of the EAP to ensure that the environmental themes provided by the screening tool are comprehensive and complete for the project. Refer to the disclaimer.

MAP OF RELATIVE AGRICULTURE THEME SENSITIVITY

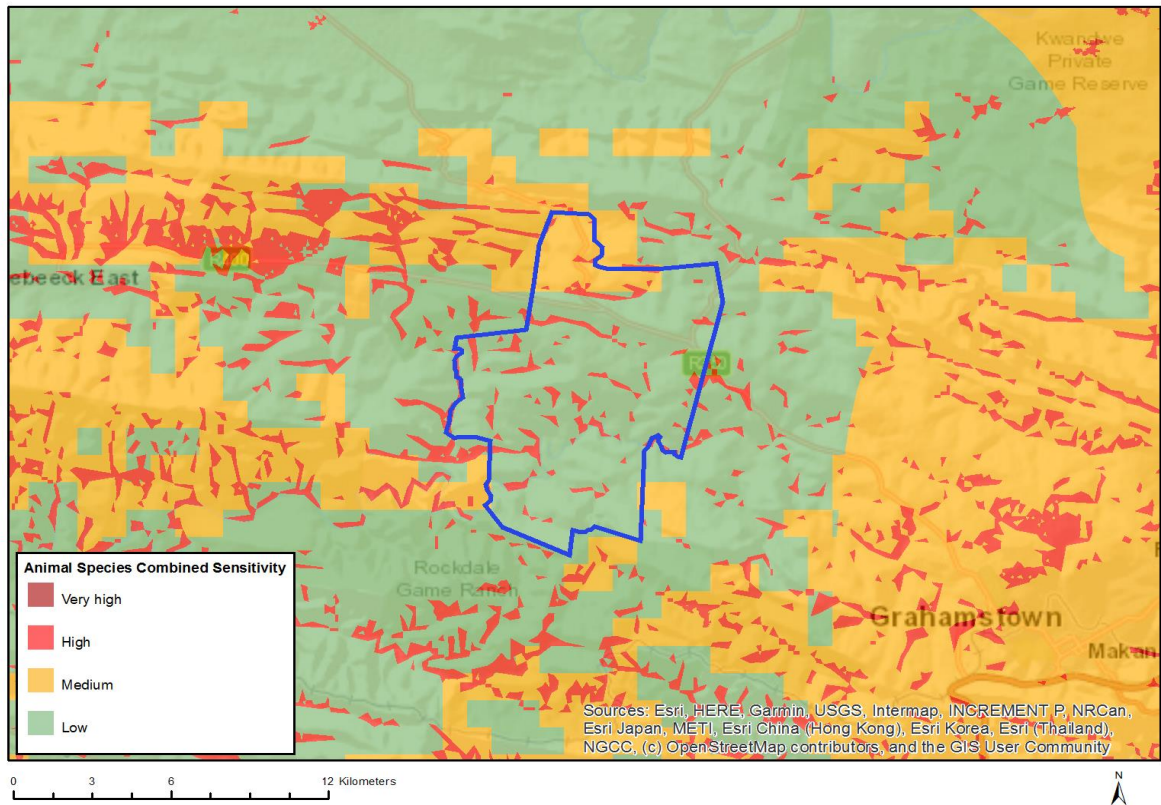


| Very High sensitivity | High sensitivity | Medium sensitivity | Low sensitivity |
|-----------------------|------------------|--------------------|-----------------|
| | X | | |

Sensitivity Features:

| Sensitivity | Feature(s) |
|-------------|---|
| High | Annual Crop Cultivation / Planted Pastures Rotation; Land capability; 06. Low-Moderate/07. Low-Moderate/08. Moderate |
| High | Annual Crop Cultivation / Planted Pastures Rotation; Land capability; 01. Very low/02. Very low/03. Low-Very low/04. Low-Very low/05. Low |
| Low | Land capability; 01. Very low/02. Very low/03. Low-Very low/04. Low-Very low/05. Low |
| Medium | Land capability; 06. Low-Moderate/07. Low-Moderate/08. Moderate |

MAP OF RELATIVE ANIMAL SPECIES THEME SENSITIVITY

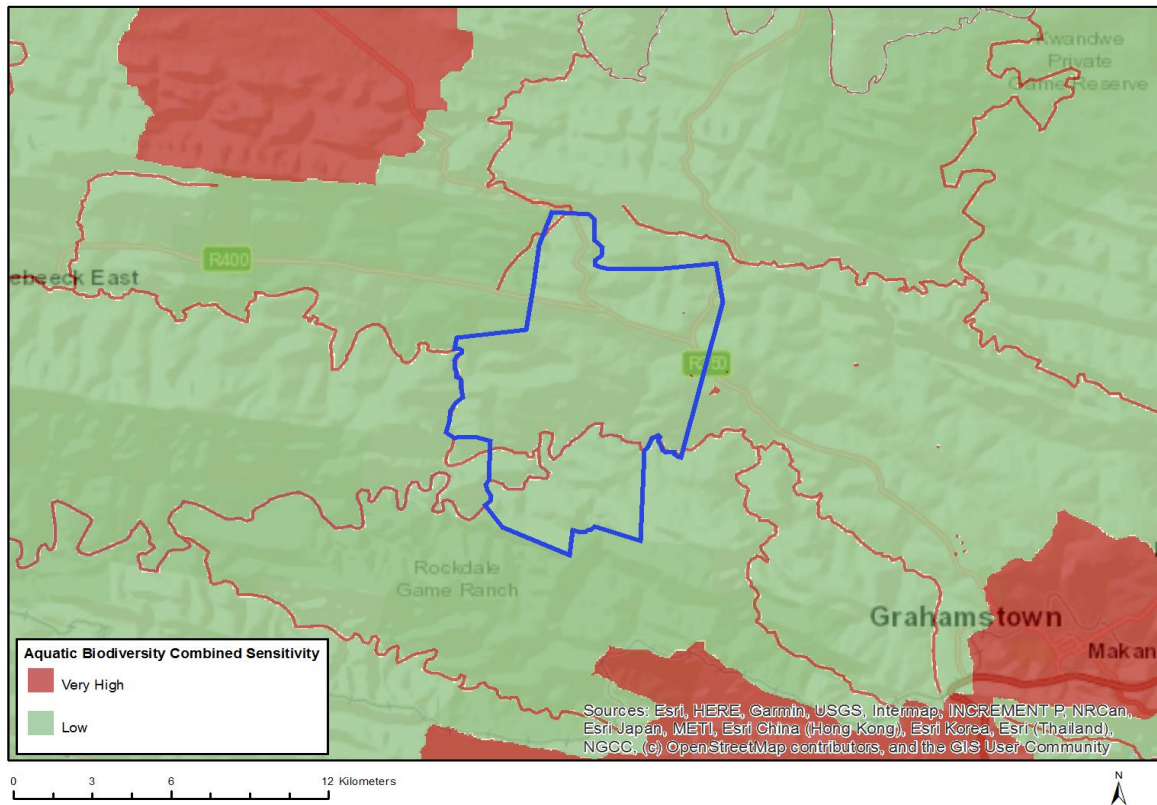


| Very High sensitivity | High sensitivity | Medium sensitivity | Low sensitivity |
|-----------------------|------------------|--------------------|-----------------|
| | X | | |

Sensitivity Features:

| Sensitivity | Feature(s) |
|-------------|--------------------------------|
| High | Aves-Circus maurus |
| Low | Low sensitivity |
| Medium | Mammalia-Ourebia ourebi ourebi |

MAP OF RELATIVE AQUATIC BIODIVERSITY THEME SENSITIVITY

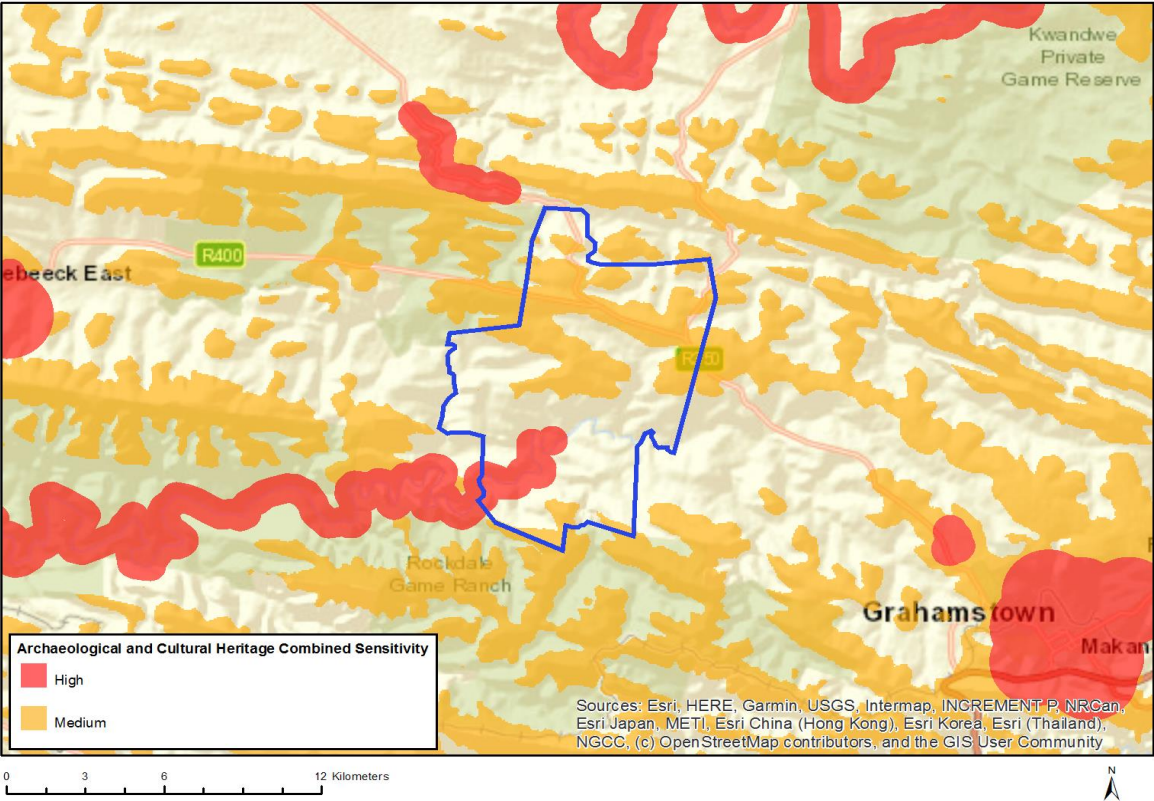


| Very High sensitivity | High sensitivity | Medium sensitivity | Low sensitivity |
|-----------------------|------------------|--------------------|-----------------|
| X | | | |

Sensitivity Features:

| Sensitivity | Feature(s) |
|-------------|------------------------|
| Low | Low sensitivity |
| Very High | Rivers |
| Very High | Wetlands and Estuaries |

MAP OF RELATIVE ARCHAEOLOGICAL AND CULTURAL HERITAGE THEME SENSITIVITY

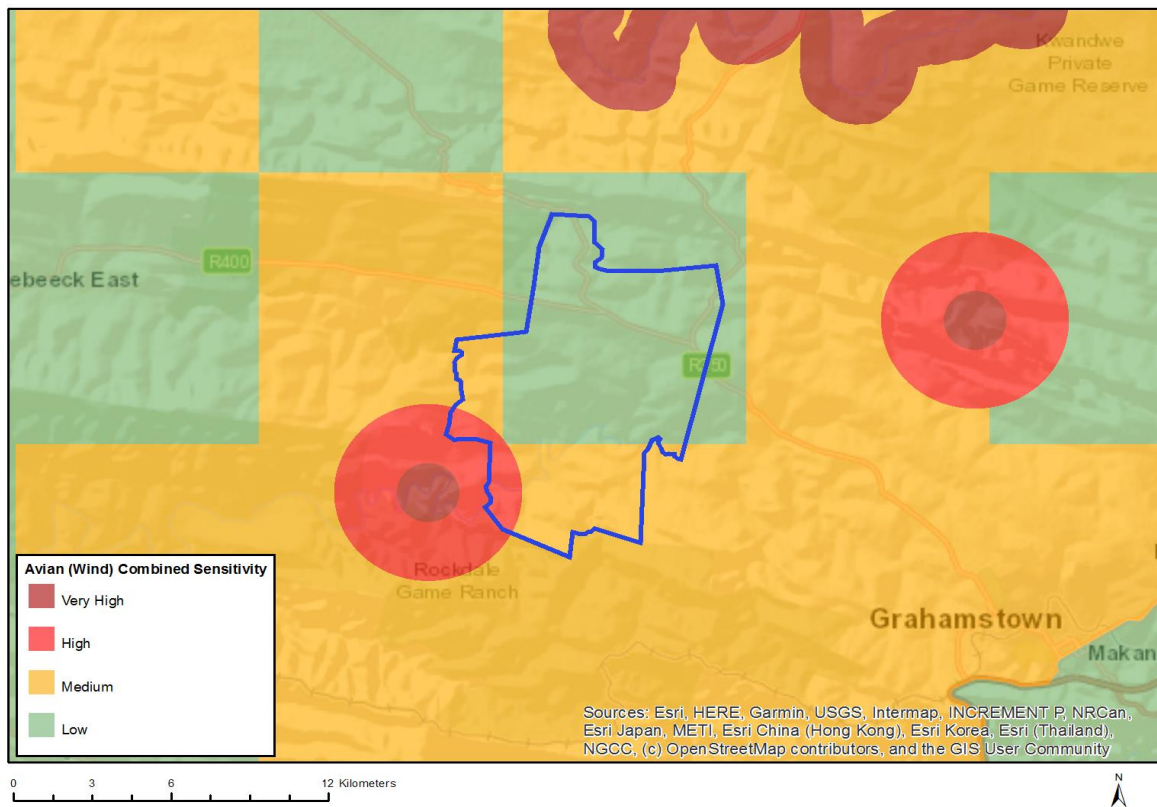


| Very High sensitivity | High sensitivity | Medium sensitivity | Low sensitivity |
|-----------------------|------------------|--------------------|-----------------|
| | X | | |

Sensitivity Features:

| Sensitivity | Feature(s) |
|-------------|--|
| High | Within 500 m of an important river |
| High | Within 500 m of a provincial heritage site |
| Medium | Mountain or ridge |

MAP OF RELATIVE AVIAN (WIND) THEME SENSITIVITY

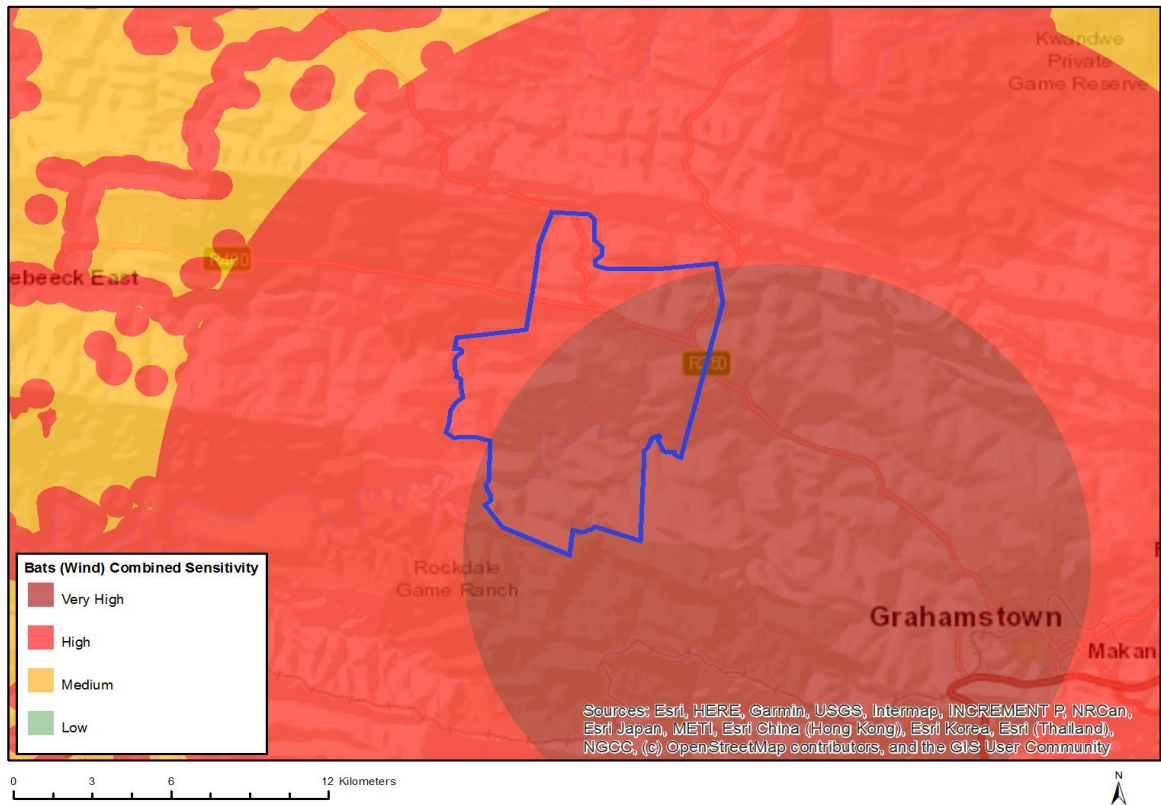


| Very High sensitivity | High sensitivity | Medium sensitivity | Low sensitivity |
|-----------------------|------------------|--------------------|-----------------|
| | X | | |

Sensitivity Features:

| Sensitivity | Feature(s) |
|-------------|--|
| High | between 1 and 3 km from Lanner Falcon nest sites |
| High | between 1 and 3 km from Lanner Falcon nest sites; areas where susceptible large terrestrial birds were found to be present |
| Low | Area Outside Sensitivities |
| Medium | areas where susceptible large terrestrial birds were found to be present |

MAP OF RELATIVE BATS (WIND) THEME SENSITIVITY

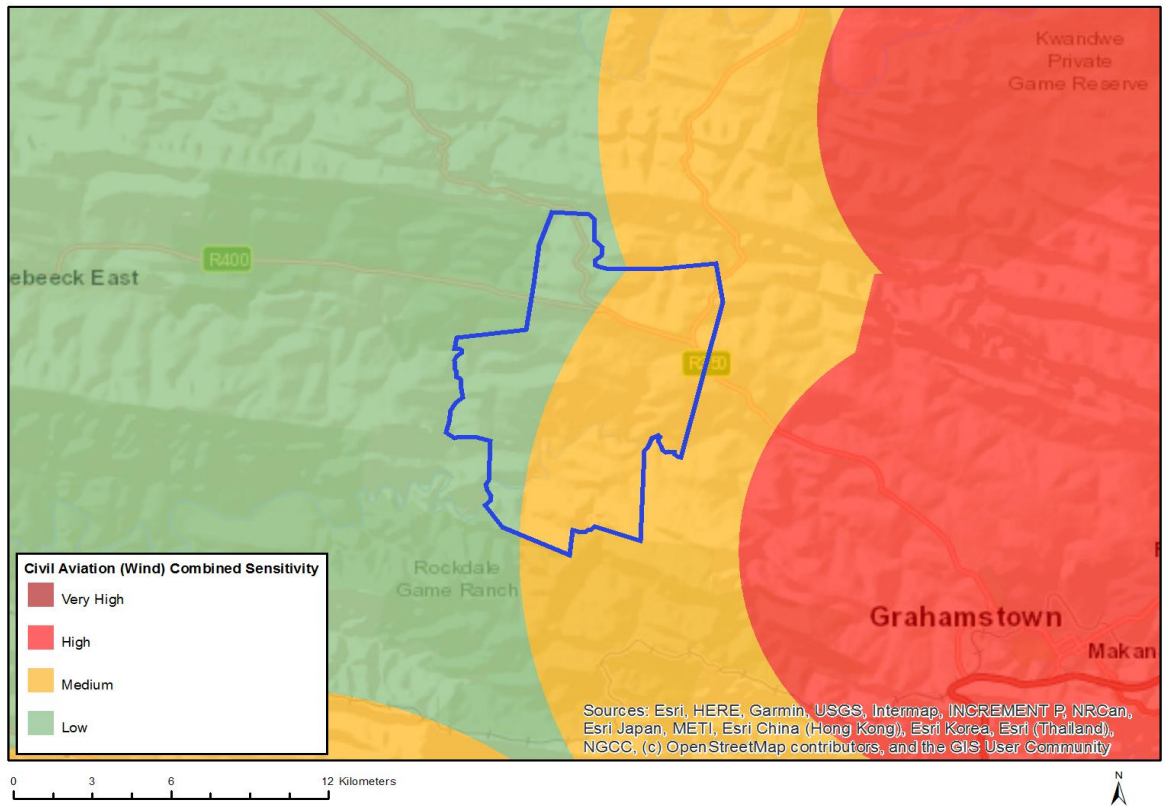


| Very High sensitivity | High sensitivity | Medium sensitivity | Low sensitivity |
|-----------------------|------------------|--------------------|-----------------|
| X | | | |

Sensitivity Features:

| Sensitivity | Feature(s) |
|-------------|---|
| High | Between 10 and 20 km from a large bat roost |
| High | Bat roost |
| High | Within 500 m of a river |
| High | Wetland |
| High | Within 500 m of a wetland |
| Medium | Croplands |
| Medium | Within 10 km of an unconfirmed bat roost |
| Very High | Within 10 km of a large bat roost |

MAP OF RELATIVE CIVIL AVIATION (WIND) THEME SENSITIVITY

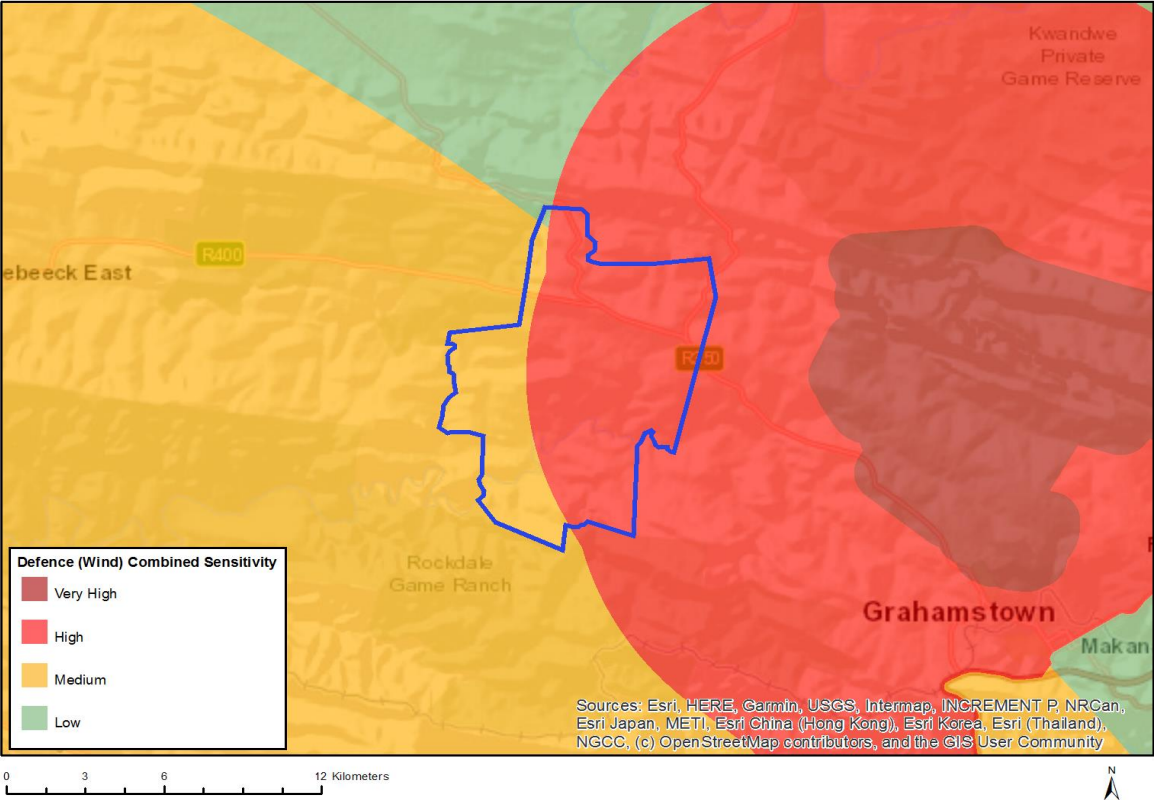


| Very High sensitivity | High sensitivity | Medium sensitivity | Low sensitivity |
|-----------------------|------------------|--------------------|-----------------|
| | | X | |

Sensitivity Features:

| Sensitivity | Feature(s) |
|-------------|---|
| Low | Low sensitivity |
| Medium | Between 8 and 15 km of other civil aviation aerodrome |

MAP OF RELATIVE DEFENCE (WIND) THEME SENSITIVITY

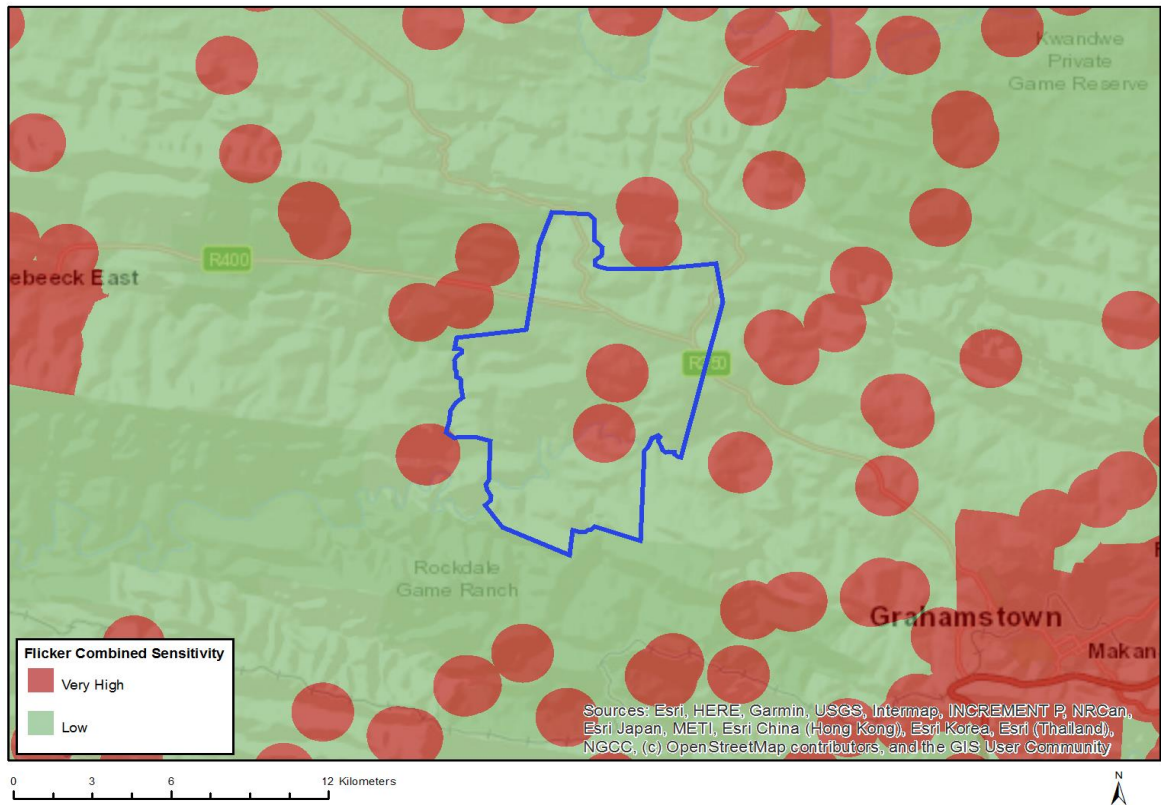


| Very High sensitivity | High sensitivity | Medium sensitivity | Low sensitivity |
|-----------------------|------------------|--------------------|-----------------|
| | X | | |

Sensitivity Features:

| Sensitivity | Feature(s) |
|-------------|-----------------|
| High | Defence Site |
| Low | Low sensitivity |
| Medium | Defence Site |

MAP OF RELATIVE FLICKER THEME SENSITIVITY

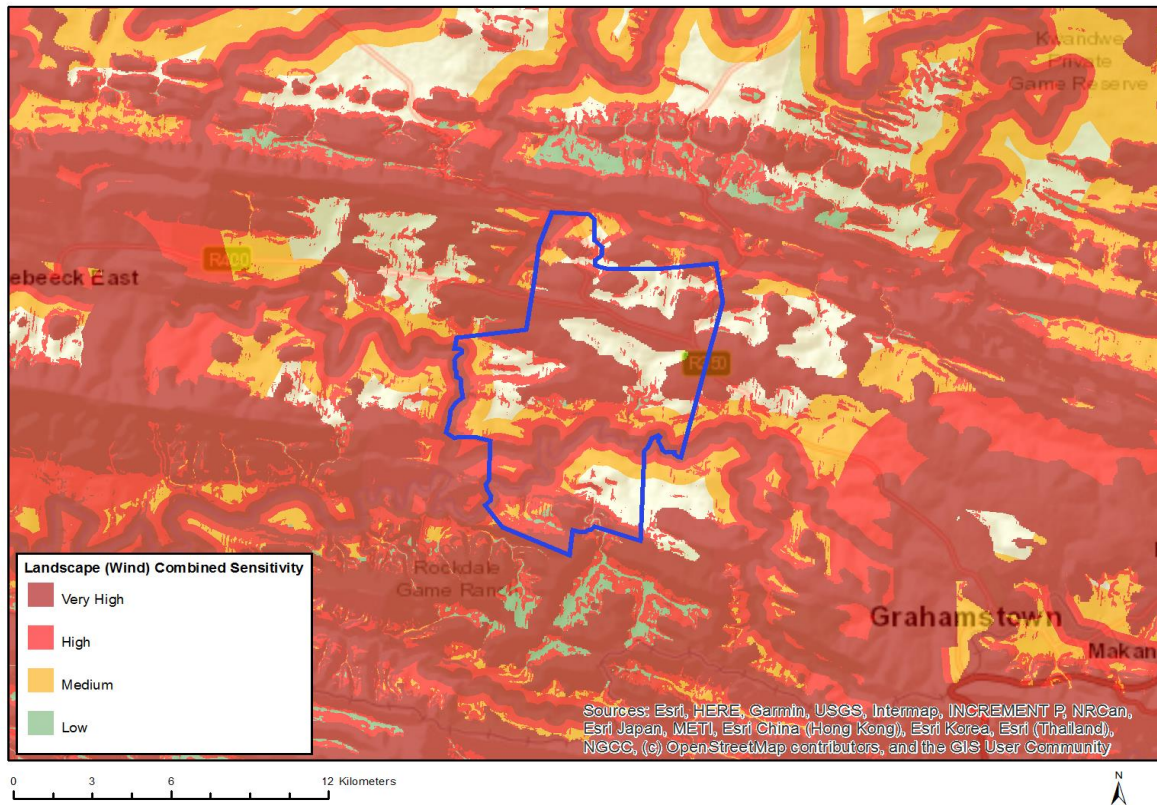


| Very High sensitivity | High sensitivity | Medium sensitivity | Low sensitivity |
|-----------------------|------------------|--------------------|-----------------|
| X | | | |

Sensitivity Features:

| Sensitivity | Feature(s) |
|-------------|--|
| Low | Area of low sensitivity |
| Very High | Potential temporarily or permanently inhabited residence |

MAP OF RELATIVE LANDSCAPE (WIND) THEME SENSITIVITY

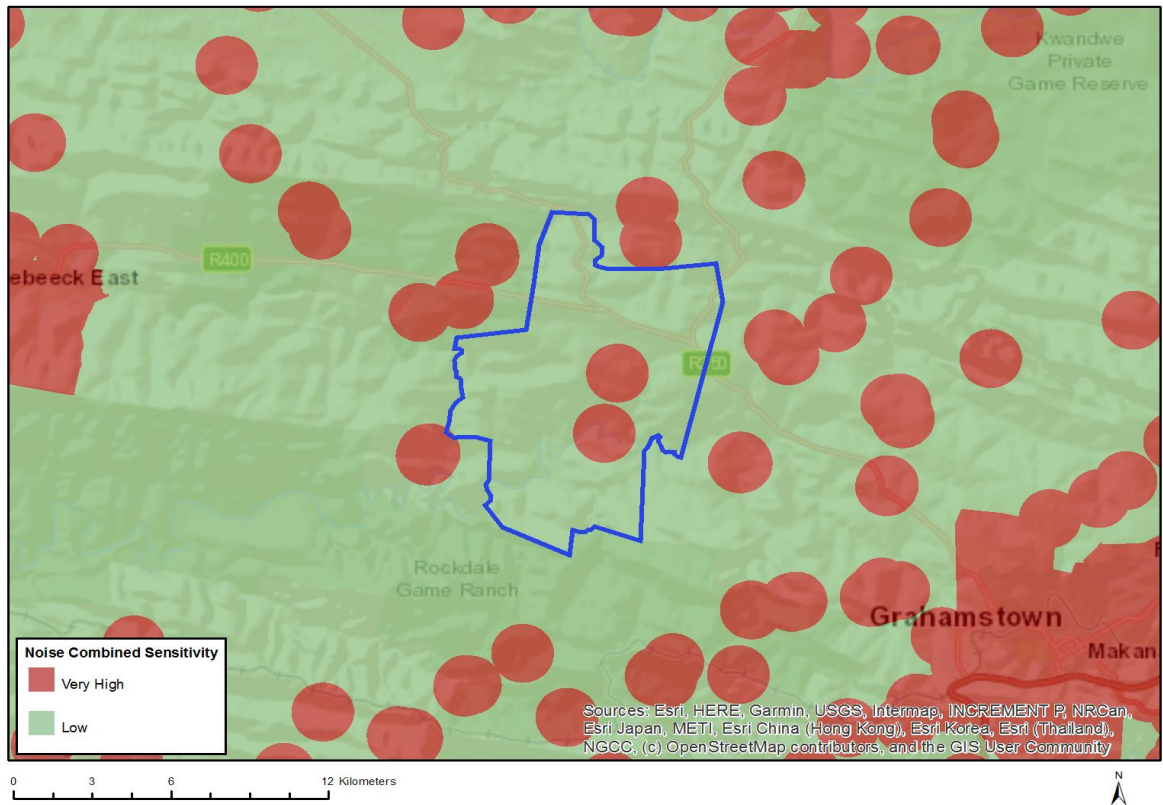


| Very High sensitivity | High sensitivity | Medium sensitivity | Low sensitivity |
|-----------------------|------------------|--------------------|-----------------|
| X | | | |

Sensitivity Features:

| Sensitivity | Feature(s) |
|-------------|-------------------------------|
| High | Slope between 1:4 and 1:10 |
| High | Within 500 m of a river |
| Low | Slope less than 1:10 |
| Medium | Within 1000 m of a wetland |
| Very High | Mountain tops and high ridges |
| Very High | Slope more than 1:4 |
| Very High | Within 250 m of a river |

MAP OF RELATIVE NOISE THEME SENSITIVITY

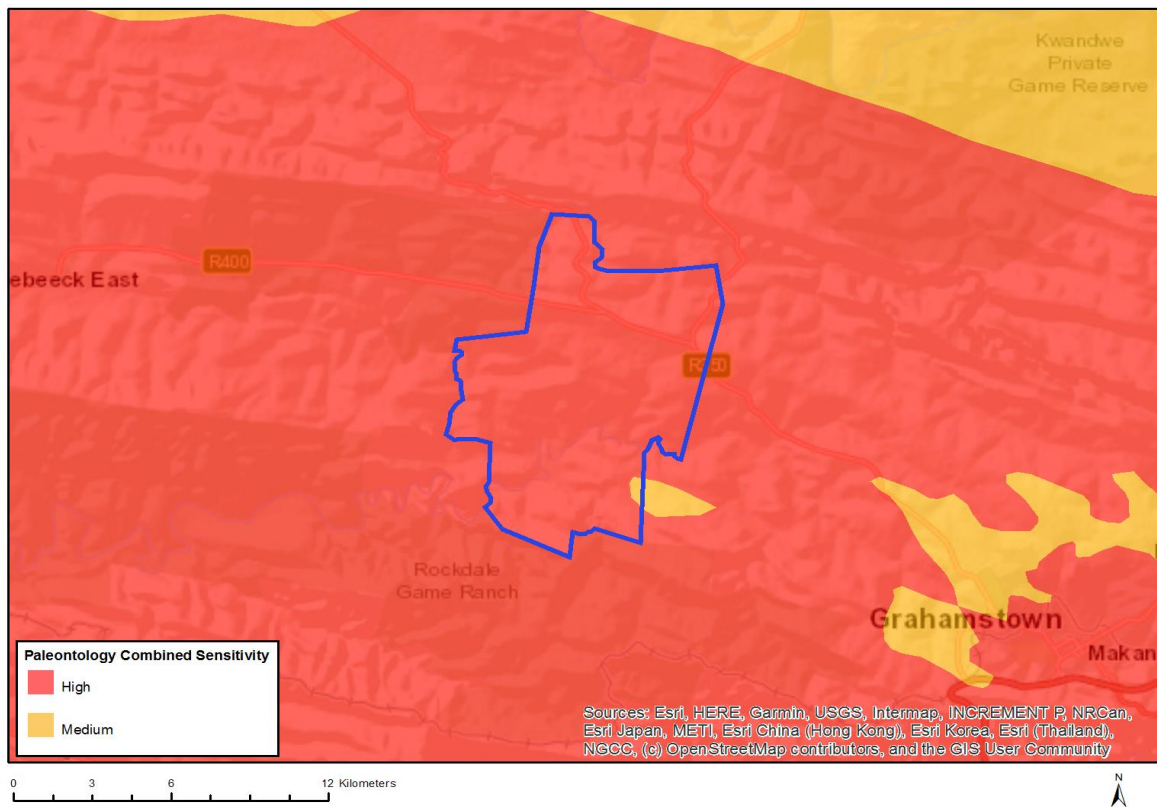


| Very High sensitivity | High sensitivity | Medium sensitivity | Low sensitivity |
|-----------------------|------------------|--------------------|-----------------|
| X | | | |

Sensitivity Features:

| Sensitivity | Feature(s) |
|-------------|--|
| Low | Area of low sensitivity |
| Very High | Potential temporarily or permanently inhabited residence |

MAP OF RELATIVE PALEONTOLOGY THEME SENSITIVITY

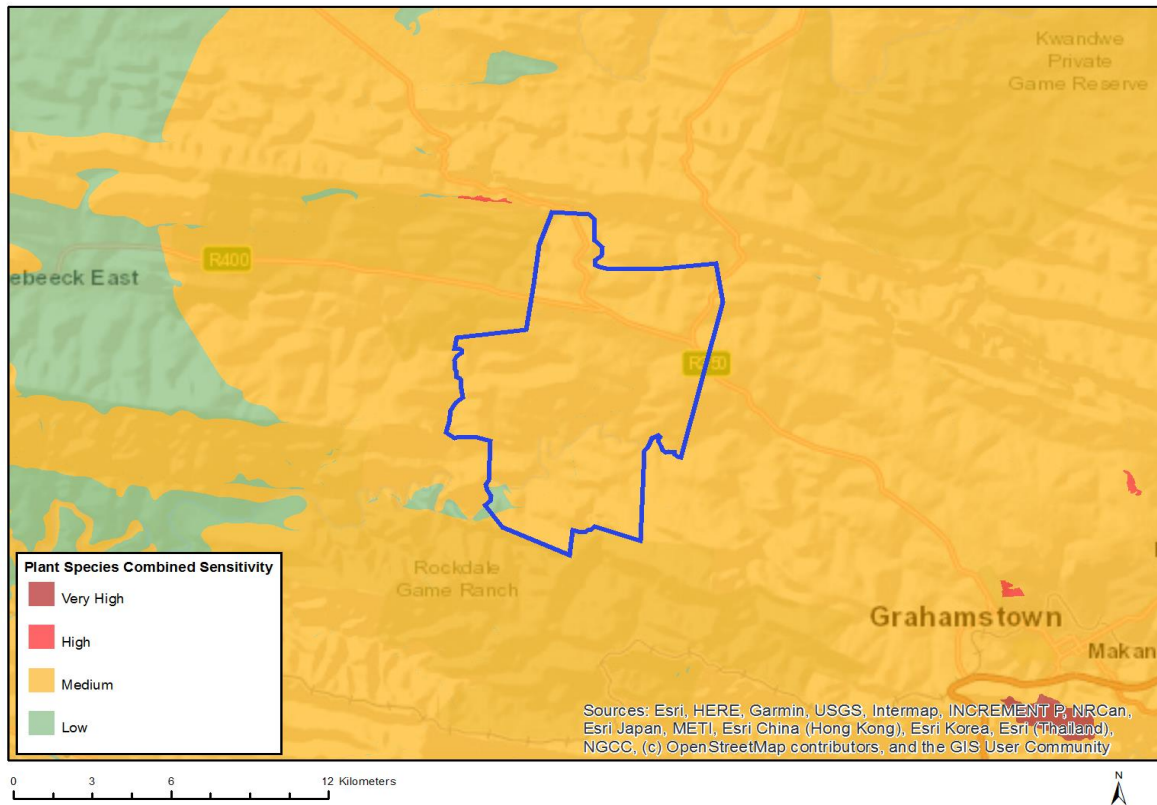


| Very High sensitivity | High sensitivity | Medium sensitivity | Low sensitivity |
|-----------------------|------------------|--------------------|-----------------|
| | X | | |

Sensitivity Features:

| Sensitivity | Feature(s) |
|-------------|--|
| High | Rock units with a high paleontological sensitivity |
| Medium | Rock units with a medium paleontological sensitivity |

MAP OF RELATIVE PLANT SPECIES THEME SENSITIVITY

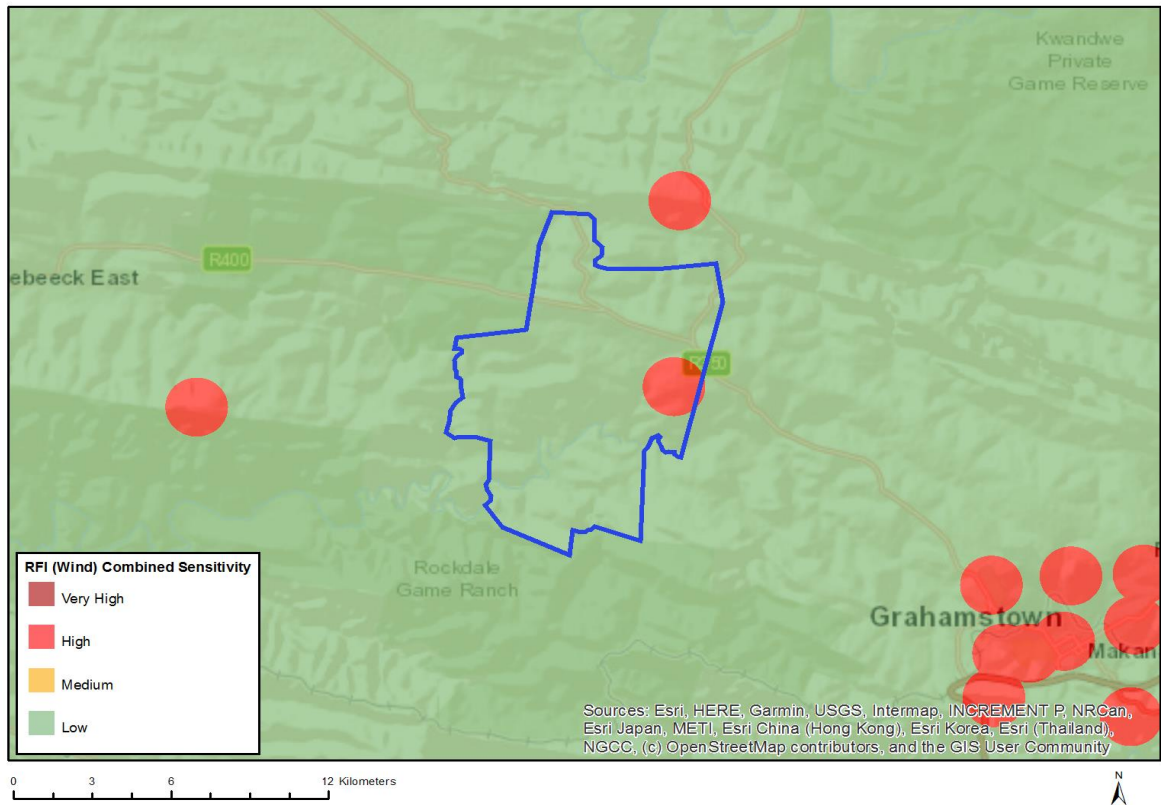


| Very High sensitivity | High sensitivity | Medium sensitivity | Low sensitivity |
|-----------------------|------------------|--------------------|-----------------|
| | | X | |

Sensitivity Features:

| Sensitivity | Feature(s) |
|-------------|--------------------------|
| Low | Low sensitivity |
| Medium | Syringodea flanagani |
| Medium | Sensitive species 491 |
| Medium | Sensitive species 348 |
| Medium | Isoetes wormaldii |
| Medium | Sensitive species 123 |
| Medium | Sensitive species 294 |
| Medium | Pterygodium cleistogamum |
| Medium | Agathosma bicornuta |
| Medium | Sensitive species 655 |
| Medium | Sensitive species 661 |
| Medium | Searsia albomarginata |
| Medium | Sensitive species 333 |

MAP OF RELATIVE RFI (WIND) THEME SENSITIVITY

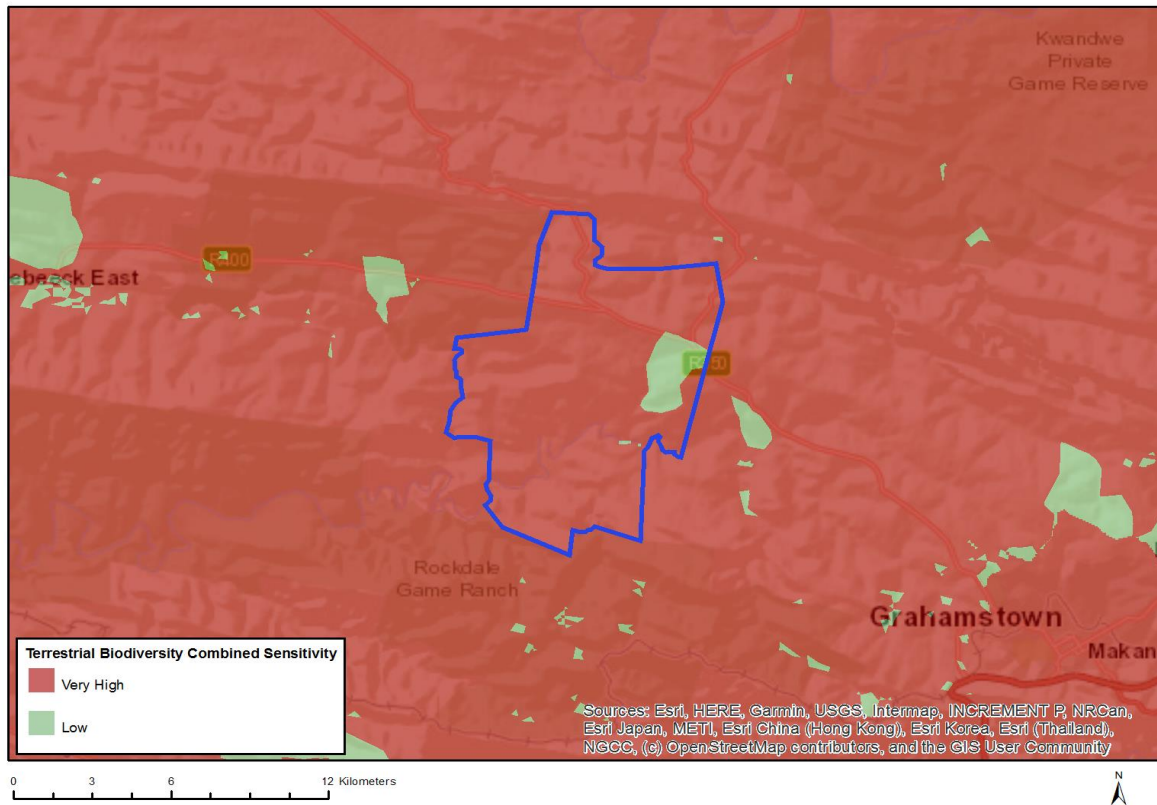


| Very High sensitivity | High sensitivity | Medium sensitivity | Low sensitivity |
|-----------------------|------------------|--------------------|-----------------|
| | X | | |

Sensitivity Features:

| Sensitivity | Feature(s) |
|-------------|--|
| High | Within 1 km of a telecommunication facility;None;More than 60 km from a Weather Radar installation |
| Low | Low sensitivity for telecommunications;None;More than 60 km from a Weather Radar installation |

MAP OF RELATIVE TERRESTRIAL BIODIVERSITY THEME SENSITIVITY



| Very High sensitivity | High sensitivity | Medium sensitivity | Low sensitivity |
|-----------------------|------------------|--------------------|-----------------|
| X | | | |

Sensitivity Features:

| Sensitivity | Feature(s) |
|-------------|------------------------------|
| Low | Low Sensitivity |
| Very High | Critical Biodiversity Area 1 |
| Very High | Critical Biodiversity Area 2 |
| Very High | Ecological Support Area 1 |
| Very High | Ecological Support Area 2 |