

**SCREENING REPORT FOR AN ENVIRONMENTAL AUTHORIZATION OR  
FOR A PART TWO AMENDMENT OF AN ENVIRONMENTAL AUTHORISATION  
AS REQUIRED BY THE 2014 EIA REGULATIONS – PROPOSED SITE  
ENVIRONMENTAL SENSITIVITY**

**EIA Reference number:** TBC

**Project name:** Wind Relic - Fronteer (East 2)

**Project title:** Wind Relic - Fronteer (East 2)

**Date screening report generated:** 31/08/2020 08:54:35

**Applicant:** Fronteer (Pty) Ltd

**Compiler:** Lisa Opperman

**Compiler signature:**

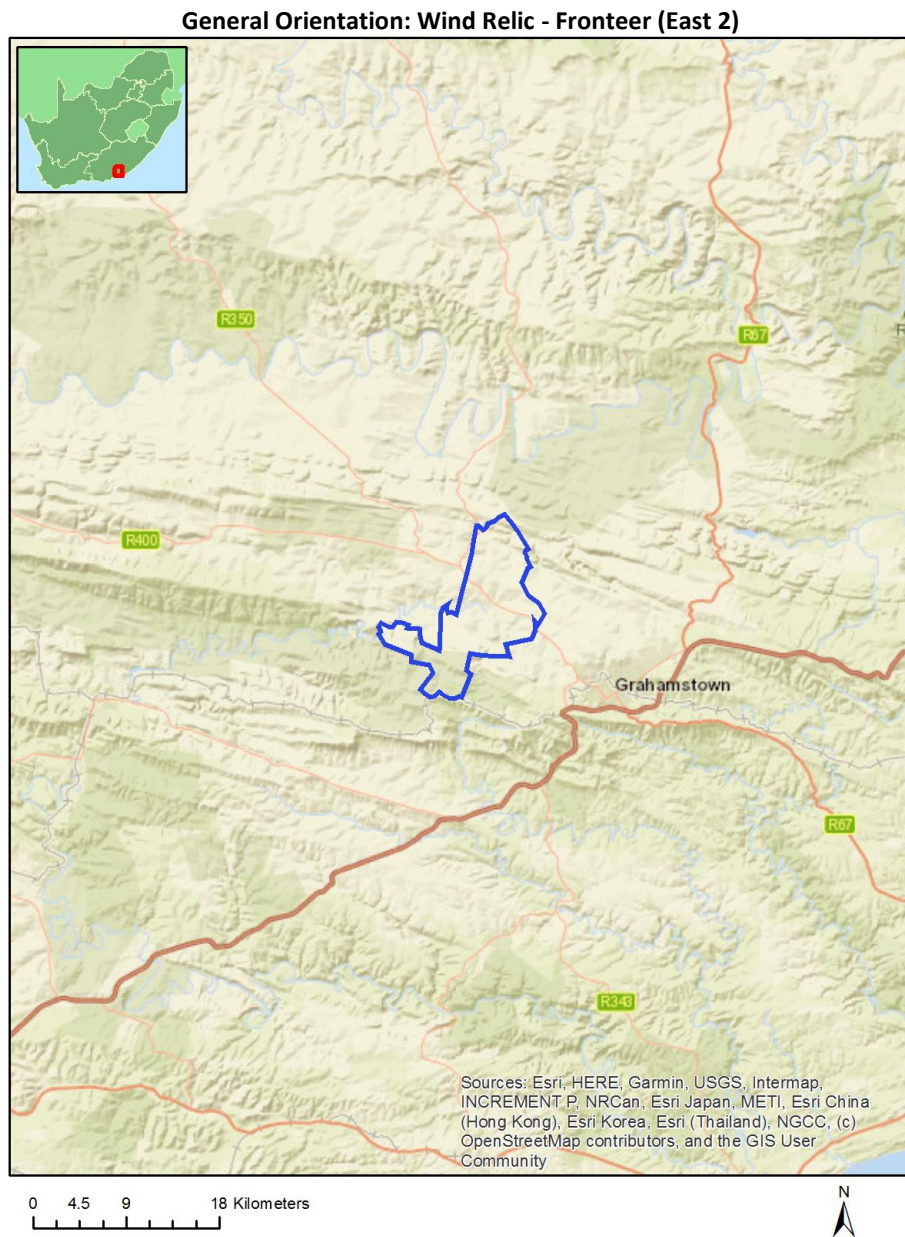
.....

# Table of Contents

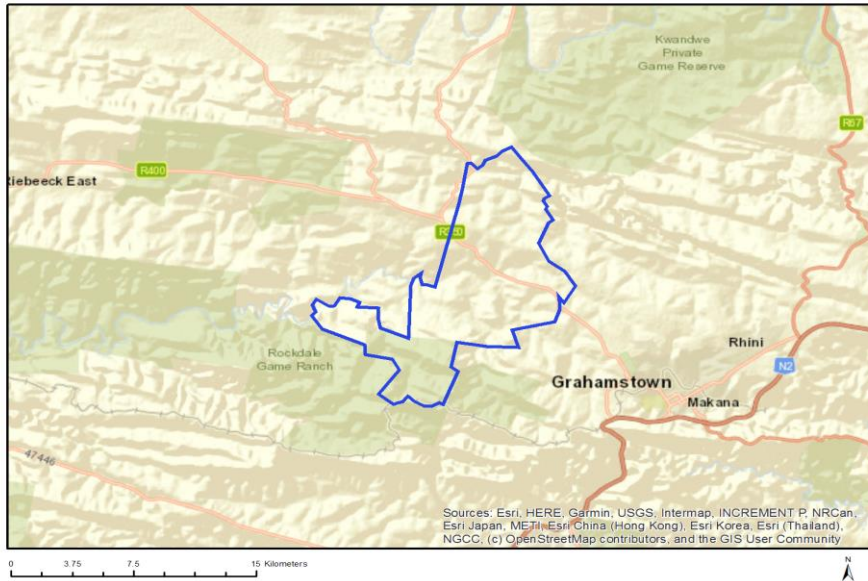
- Proposed Project Location ..... 3
  - Orientation map 1: General location ..... 3
- Map of proposed site and relevant area(s) ..... 4
  - Cadastral details of the proposed site ..... 4
  - Wind and Solar developments with an approved Environmental Authorisation or applications under consideration within 30 km of the proposed area ..... 5
  - Environmental Management Frameworks relevant to the application ..... 5
- Environmental screening results and assessment outcomes ..... 6
  - Relevant development incentives, restrictions, exclusions or prohibitions ..... 6
- Map indicating proposed development footprint within applicable development incentive, restriction, exclusion or prohibition zones ..... 7
  - Proposed Development Area Environmental Sensitivity ..... 7
  - Specialist assessments identified ..... 8
- Results of the environmental sensitivity of the proposed area ..... 10
  - MAP OF RELATIVE AGRICULTURE THEME SENSITIVITY ..... 10
  - MAP OF RELATIVE ANIMAL SPECIES THEME SENSITIVITY ..... 11
  - MAP OF RELATIVE AQUATIC BIODIVERSITY THEME SENSITIVITY ..... 12
  - MAP OF RELATIVE ARCHAEOLOGICAL AND CULTURAL HERITAGE THEME SENSITIVITY ..... 13
  - MAP OF RELATIVE AVIAN (WIND) THEME SENSITIVITY ..... 14
  - MAP OF RELATIVE BATS (WIND) THEME SENSITIVITY ..... 15
  - MAP OF RELATIVE CIVIL AVIATION (WIND) THEME SENSITIVITY ..... 16
  - MAP OF RELATIVE DEFENCE (WIND) THEME SENSITIVITY ..... 17
  - MAP OF RELATIVE FLICKER THEME SENSITIVITY ..... 18
  - MAP OF RELATIVE LANDSCAPE (WIND) THEME SENSITIVITY ..... 19
  - MAP OF RELATIVE NOISE THEME SENSITIVITY ..... 20
  - MAP OF RELATIVE PALEONTOLOGY THEME SENSITIVITY ..... 21
  - MAP OF RELATIVE PLANT SPECIES THEME SENSITIVITY ..... 22
  - MAP OF RELATIVE RFI (WIND) THEME SENSITIVITY ..... 23
  - MAP OF RELATIVE TERRESTRIAL BIODIVERSITY THEME SENSITIVITY ..... 24

# Proposed Project Location

## Orientation map 1: General location



## Map of proposed site and relevant area(s)



## Cadastral details of the proposed site

Property details:

No	Farm Name	Farm/ Erf No	Portion	Latitude	Longitude	Property Type
1	STROWAN	249	0	33°17'31.6S	26°27'58.56E	Farm
2	DOORNFONTEIN	268	0	33°16'54.35S	26°18'16.14E	Farm
3		692	0	33°14'56S	26°27'36.94E	Farm
4	TABLE HILL	187	0	33°14'55.66S	26°25'20.38E	Farm
5		250	0	33°17'26.46S	26°25'23.93E	Farm
6	CLIFTON	132	0	33°11'4.65S	26°22'52.28E	Farm
7	KRUISFONTEIN	252	0	33°17'50.22S	26°22'43.35E	Farm
8	ASHTON	131	0	33°11'16.85S	26°27'3.13E	Farm
9	DRAAI	184	0	33°12'2.32S	26°25'18.9E	Farm
10		258	0	33°19'25.13S	26°23'9.14E	Farm
11	SLAAI KRAAL OUTSPAN	251	0	33°18'0.86S	26°25'11.44E	Farm
12	THORN KLOOF	554	0	33°15'31.9S	26°18'29.93E	Farm
13	BRACK KLOOF	183	0	33°13'29.68S	26°22'31.51E	Farm
14	BURNT KRAAL	189	0	33°13'58.27S	26°28'28.42E	Farm
15	STROWAN	254	0	33°18'34.62S	26°25'24.26E	Farm
16	LOLDANI	591	0	33°18'54.96S	26°23'13.15E	Farm
17	YELLOW WOODS ANNEX	178	0	33°18'9.31S	26°19'48.25E	Farm
18	HILTON	182	0	33°15'40.68S	26°22'2.29E	Farm
19	HILTON	182	4	33°16'7.11S	26°22'25.56E	Farm Portion
20	HILTON	182	9	33°15'4.71S	26°22'13.39E	Farm Portion
21	ASHTON	131	0	33°11'45.17S	26°26'8.63E	Farm Portion
22	HILTON	182	10	33°15'24.24S	26°20'12.95E	Farm Portion
23	STROWAN	249	1	33°17'16.19S	26°27'37.4E	Farm Portion
24	KRUISFONTEIN	252	1	33°16'32.78S	26°21'36.77E	Farm Portion
25		258	0	33°18'49.26S	26°22'25.32E	Farm Portion
26	ASHTON	131	6	33°10'26.43S	26°25'14.86E	Farm Portion
27	YELLOW WOODS	178	2	33°17'39.37S	26°20'25.88E	Farm Portion

	ANNEX					
28	TABLE HILL	187	1	33°14'16.81S	26°24'45.64E	Farm Portion
29	SLAAI KRAAL OUTSPAN	251	0	33°18'0.86S	26°25'11.44E	Farm Portion
30	ASHTON	131	2	33°11'0.04S	26°27'44.39E	Farm Portion
31	ASHTON	131	5	33°12'44.87S	26°27'24.28E	Farm Portion
32	CLIFTON	132	1	33°11'37.8S	26°24'32.59E	Farm Portion
33	TABLE HILL	187	0	33°15'33.58S	26°26'7.11E	Farm Portion
34	BURNT KRAAL	189	1	33°14'52.96S	26°27'31.27E	Farm Portion
35	KRUISFONTEIN	252	5	33°18'52.13S	26°22'18E	Farm Portion
36	KRUISFONTEIN	252	8	33°18'53.42S	26°22'17.74E	Farm Portion
37	DOORNFONTEIN	268	0	33°16'48.28S	26°18'54.62E	Farm Portion
38	DRAAI	184	1	33°12'2.32S	26°25'18.9E	Farm Portion
39	TABLE HILL	187	2	33°14'58.6S	26°24'58.39E	Farm Portion
40	BURNT KRAAL	189	0	33°14'4.15S	26°28'32.58E	Farm Portion
41	KRUISFONTEIN	252	6	33°18'52.62S	26°22'17.89E	Farm Portion
42		258	4	33°18'50.81S	26°22'24.02E	Farm Portion
43	TABLE HILL	187	4	33°15'14.71S	26°27'20.25E	Farm Portion
44	STROWAN	254	0	33°18'38.15S	26°24'56.41E	Farm Portion
45		258	0	33°19'22.88S	26°23'3.27E	Farm Portion
46	ASHTON	131	4	33°12'38.17S	26°27'53.5E	Farm Portion
47	ASHTON	131	0	33°11'9.77S	26°25'55.59E	Farm Portion
48	TABLE HILL	187	5	33°15'45.14S	26°27'50.16E	Farm Portion
49		250	0	33°17'26.46S	26°25'23.93E	Farm Portion
50	KRUISFONTEIN	252	7	33°18'50.91S	26°22'17.81E	Farm Portion
51	KRUISFONTEIN	252	0	33°17'42.64S	26°23'0.85E	Farm Portion
52	LOLDANI	591	0	33°18'49.79S	26°22'54.88E	Farm Portion
53	KRUISFONTEIN	252	4	33°18'14.53S	26°21'48.54E	Farm Portion
54		258	3	33°18'52.07S	26°22'24.62E	Farm Portion
55	THORN KLOOF	554	0	33°15'31.9S	26°18'29.93E	Farm Portion
56		692	0	33°14'56S	26°27'36.94E	Farm Portion
57	ASHTON	131	1	33°12'5.26S	26°28'39.06E	Farm Portion
58	HILTON	182	3	33°15'31.7S	26°21'38.53E	Farm Portion
59	HILTON	182	2	33°16'14.61S	26°20'44.85E	Farm Portion
60	BRACK KLOOF	183	0	33°13'38.93S	26°22'22.82E	Farm Portion
61	TABLE HILL	187	3	33°15'45.13S	26°25'4.34E	Farm Portion

Development footprint<sup>1</sup> vertices:  
No development footprint(s) specified.

## Wind and Solar developments with an approved Environmental Authorisation or applications under consideration within 30 km of the proposed area

No nearby wind or solar developments found.

## Environmental Management Frameworks relevant to the application

No intersections with EMF areas found.

<sup>1</sup> “development footprint”, means the area within the site on which the development will take place and includes all ancillary developments for example roads, power lines, boundary walls, paving etc. which require vegetation clearance or which will be disturbed and for which the application has been submitted.

## Environmental screening results and assessment outcomes

The following sections contain a summary of any development incentives, restrictions, exclusions or prohibitions that apply to the proposed development site as well as the most environmental sensitive features on the site based on the site sensitivity screening results for the application classification that was selected. The application classification selected for this report is: Utilities Infrastructure | Electricity | Generation | Renewable | Wind | Wind.

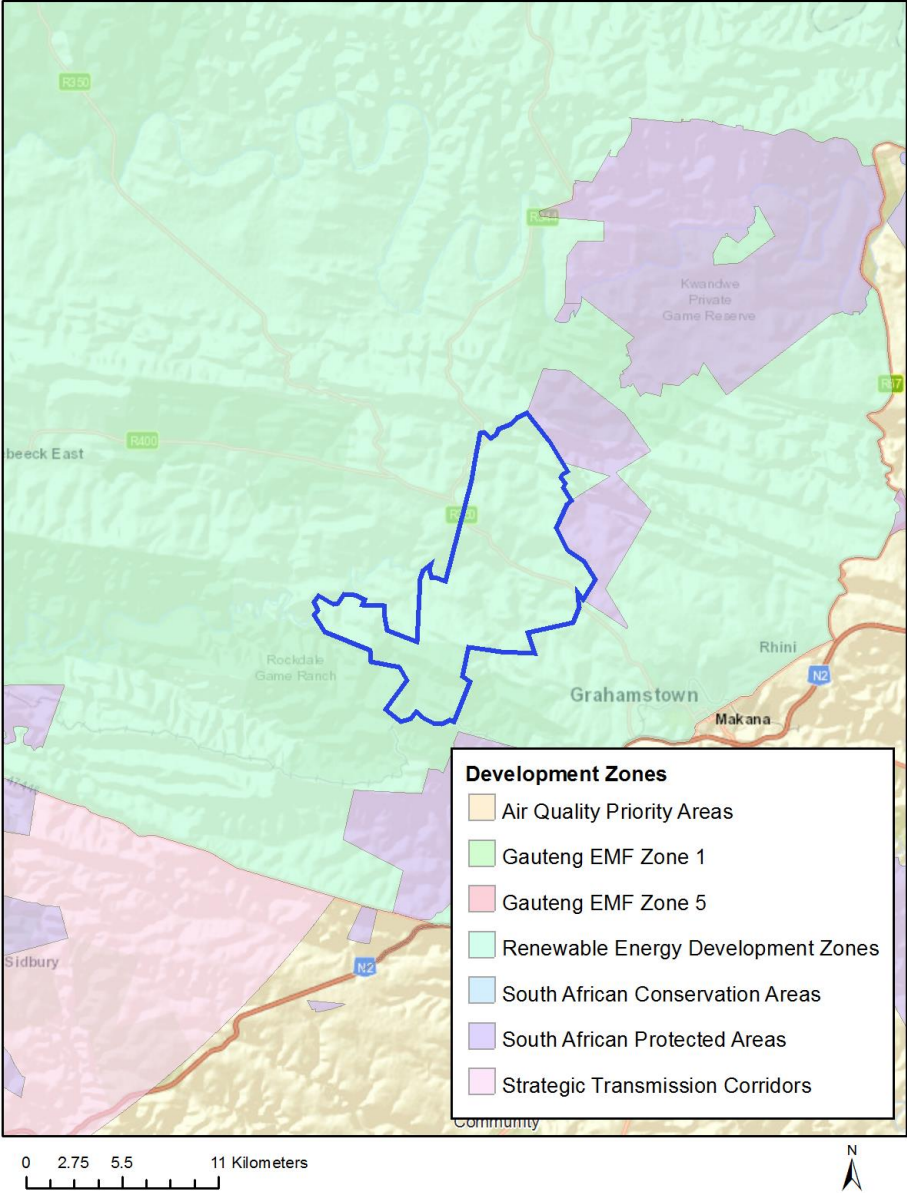
### Relevant development incentives, restrictions, exclusions or prohibitions

The following development incentives, restrictions, exclusions or prohibitions and their implications that apply to this site are indicated below.

Incentive, restriction or prohibition	Implication
Strategic Transmission Corridor-Eastern corridor	<a href="https://screening.environment.gov.za/ScreeningDownloads/DevelopmentZones/GNR_350_of_13_April_2017.pdf">https://screening.environment.gov.za/ScreeningDownloads/DevelopmentZones/GNR_350_of_13_April_2017.pdf</a>
Renewable energy development zones 3-Cookhouse	<a href="https://screening.environment.gov.za/ScreeningDownloads/DevelopmentZones/GNR_350_of_13_April_2017.pdf">https://screening.environment.gov.za/ScreeningDownloads/DevelopmentZones/GNR_350_of_13_April_2017.pdf</a>
South African Protected Areas	<a href="https://screening.environment.gov.za/ScreeningDownloads/DevelopmentZones/SAPAD_OR_2020_Q1_Metadata.pdf">https://screening.environment.gov.za/ScreeningDownloads/DevelopmentZones/SAPAD_OR_2020_Q1_Metadata.pdf</a>

Map indicating proposed development footprint within applicable development incentive, restriction, exclusion or prohibition zones

**Project Location: Wind Relic - Fronteer (East 2)**



**Proposed Development Area Environmental Sensitivity**

The following summary of the development site environmental sensitivities is identified. Only the highest environmental sensitivity is indicated. The footprint environmental sensitivities for the proposed development footprint as identified, are indicative only and must be verified on site by a suitably qualified person before the specialist assessments identified below can be confirmed.

Theme	Very High sensitivity	High sensitivity	Medium sensitivity	Low sensitivity
Agriculture Theme		X		
Animal Species Theme		X		

Aquatic Biodiversity Theme	X			
Archaeological and Cultural Heritage Theme		X		
Avian (Wind) Theme		X		
Bats (Wind) Theme	X			
Civil Aviation (Wind) Theme		X		
Defence (Wind) Theme	X			
Flicker Theme	X			
Landscape (Wind) Theme	X			
Noise Theme	X			
Paleontology Theme		X		
Plant Species Theme			X	
RFI (Wind) Theme		X		
Terrestrial Biodiversity Theme	X			

### Specialist assessments identified

Based on the selected classification, and the environmental sensitivities of the proposed development footprint, the following list of specialist assessments have been identified for inclusion in the assessment report. It is the responsibility of the EAP to confirm this list and to motivate in the assessment report, the reason for not including any of the identified specialist study including the provision of photographic evidence of the site situation.

<b>N o</b>	<b>Specialist assessment</b>	<b>Assessment Protocol</b>
1	Agricultural Impact Assessment	<a href="https://screening.environment.gov.za/ScreeningDownloads/AssessmentProtocols/DraftGazetted_Agriculture_Assessment_Protocols.pdf">https://screening.environment.gov.za/ScreeningDownloads/AssessmentProtocols/DraftGazetted_Agriculture_Assessment_Protocols.pdf</a>
2	Landscape/Visual Impact Assessment	<a href="https://screening.environment.gov.za/ScreeningDownloads/AssessmentProtocols/DraftGazetted_General_Requirement_Assessment_Protocols.pdf">https://screening.environment.gov.za/ScreeningDownloads/AssessmentProtocols/DraftGazetted_General_Requirement_Assessment_Protocols.pdf</a>
3	Archaeological and Cultural Heritage Impact Assessment	<a href="https://screening.environment.gov.za/ScreeningDownloads/AssessmentProtocols/DraftGazetted_General_Requirement_Assessment_Protocols.pdf">https://screening.environment.gov.za/ScreeningDownloads/AssessmentProtocols/DraftGazetted_General_Requirement_Assessment_Protocols.pdf</a>
4	Palaeontology Impact Assessment	<a href="https://screening.environment.gov.za/ScreeningDownloads/AssessmentProtocols/DraftGazetted_General_Requirement_Assessment_Protocols.pdf">https://screening.environment.gov.za/ScreeningDownloads/AssessmentProtocols/DraftGazetted_General_Requirement_Assessment_Protocols.pdf</a>
5	Terrestrial Biodiversity Impact Assessment	<a href="https://screening.environment.gov.za/ScreeningDownloads/AssessmentProtocols/DraftGazetted_Terrestrial_Biodiversity_Assessment_Protocols.pdf">https://screening.environment.gov.za/ScreeningDownloads/AssessmentProtocols/DraftGazetted_Terrestrial_Biodiversity_Assessment_Protocols.pdf</a>

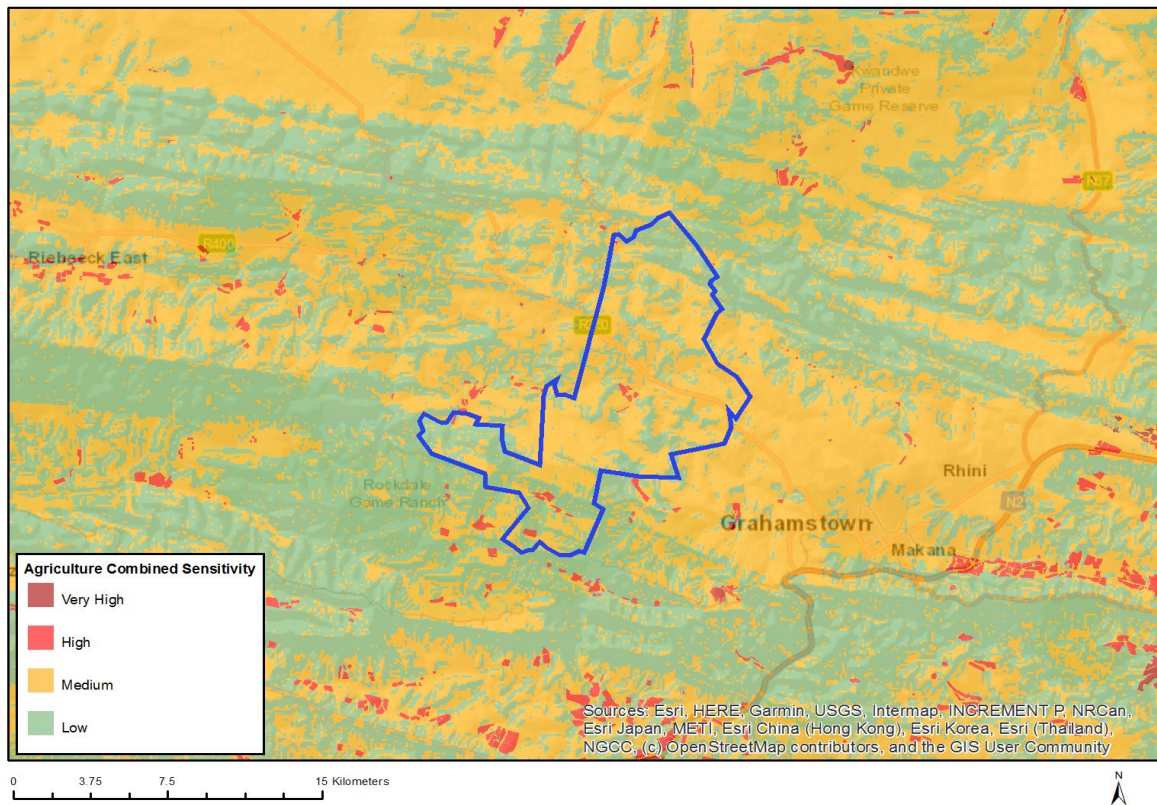


	ment	
6	Aquatic Biodiversity Impact Assessment	<a href="https://screening.environment.gov.za/ScreeningDownloads/AssessmentProtocols/DraftGazetted_Aquatic_Biodiversity_Assessment.pdf">https://screening.environment.gov.za/ScreeningDownloads/AssessmentProtocols/DraftGazetted_Aquatic_Biodiversity_Assessment.pdf</a>
7	Avian Impact Assessment	<a href="https://screening.environment.gov.za/ScreeningDownloads/AssessmentProtocols/DraftGazetted_General_Requirement_Assessment_Protocols.pdf">https://screening.environment.gov.za/ScreeningDownloads/AssessmentProtocols/DraftGazetted_General_Requirement_Assessment_Protocols.pdf</a>
8	Civil Aviation Assessment	<a href="https://screening.environment.gov.za/ScreeningDownloads/AssessmentProtocols/DraftGazetted_Civil_Aviation_Installations_Assessment_Protocols.pdf">https://screening.environment.gov.za/ScreeningDownloads/AssessmentProtocols/DraftGazetted_Civil_Aviation_Installations_Assessment_Protocols.pdf</a>
9	Defense Assessment	<a href="https://screening.environment.gov.za/ScreeningDownloads/AssessmentProtocols/DraftGazetted_Defence_Installations_Assessment_Protocols.pdf">https://screening.environment.gov.za/ScreeningDownloads/AssessmentProtocols/DraftGazetted_Defence_Installations_Assessment_Protocols.pdf</a>
10	RFI Assessment	<a href="https://screening.environment.gov.za/ScreeningDownloads/AssessmentProtocols/DraftGazetted_General_Requirement_Assessment_Protocols.pdf">https://screening.environment.gov.za/ScreeningDownloads/AssessmentProtocols/DraftGazetted_General_Requirement_Assessment_Protocols.pdf</a>
11	Noise Impact Assessment	<a href="https://screening.environment.gov.za/ScreeningDownloads/AssessmentProtocols/DraftGazetted_Noise_Impacts_Assessment_Protocols.pdf">https://screening.environment.gov.za/ScreeningDownloads/AssessmentProtocols/DraftGazetted_Noise_Impacts_Assessment_Protocols.pdf</a>
12	Flicker Assessment	<a href="https://screening.environment.gov.za/ScreeningDownloads/AssessmentProtocols/DraftGazetted_General_Requirement_Assessment_Protocols.pdf">https://screening.environment.gov.za/ScreeningDownloads/AssessmentProtocols/DraftGazetted_General_Requirement_Assessment_Protocols.pdf</a>
13	Traffic Impact Assessment	<a href="https://screening.environment.gov.za/ScreeningDownloads/AssessmentProtocols/DraftGazetted_General_Requirement_Assessment_Protocols.pdf">https://screening.environment.gov.za/ScreeningDownloads/AssessmentProtocols/DraftGazetted_General_Requirement_Assessment_Protocols.pdf</a>
14	Geotechnical Assessment	<a href="https://screening.environment.gov.za/ScreeningDownloads/AssessmentProtocols/DraftGazetted_General_Requirement_Assessment_Protocols.pdf">https://screening.environment.gov.za/ScreeningDownloads/AssessmentProtocols/DraftGazetted_General_Requirement_Assessment_Protocols.pdf</a>
15	Socio-Economic Assessment	<a href="https://screening.environment.gov.za/ScreeningDownloads/AssessmentProtocols/DraftGazetted_General_Requirement_Assessment_Protocols.pdf">https://screening.environment.gov.za/ScreeningDownloads/AssessmentProtocols/DraftGazetted_General_Requirement_Assessment_Protocols.pdf</a>
16	Plant Species Assessment	<a href="https://screening.environment.gov.za/ScreeningDownloads/AssessmentProtocols/DraftGazetted_General_Requirement_Assessment_Protocols.pdf">https://screening.environment.gov.za/ScreeningDownloads/AssessmentProtocols/DraftGazetted_General_Requirement_Assessment_Protocols.pdf</a>
17	Animal Species Assessment	<a href="https://screening.environment.gov.za/ScreeningDownloads/AssessmentProtocols/DraftGazetted_General_Requirement_Assessment_Protocols.pdf">https://screening.environment.gov.za/ScreeningDownloads/AssessmentProtocols/DraftGazetted_General_Requirement_Assessment_Protocols.pdf</a>

## Results of the environmental sensitivity of the proposed area.

The following section represents the results of the screening for environmental sensitivity of the proposed site for relevant environmental themes associated with the project classification. It is the duty of the EAP to ensure that the environmental themes provided by the screening tool are comprehensive and complete for the project. Refer to the disclaimer.

### MAP OF RELATIVE AGRICULTURE THEME SENSITIVITY

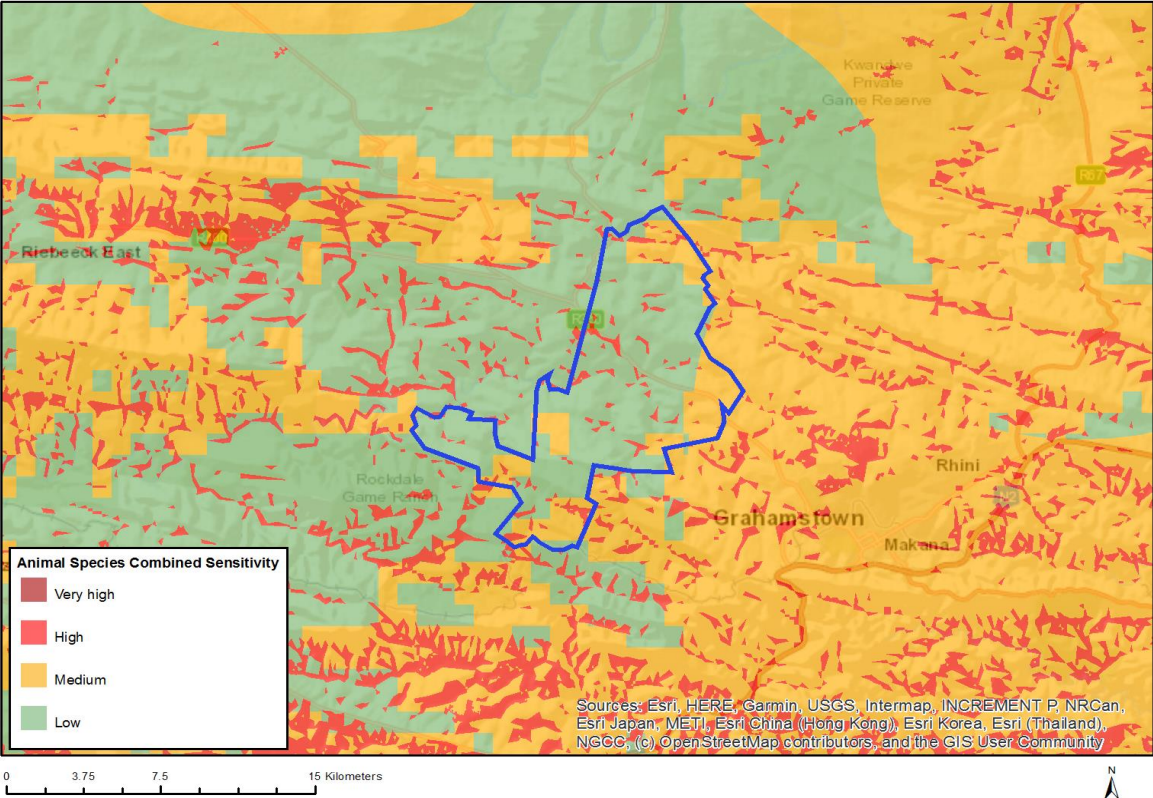


Very High sensitivity	High sensitivity	Medium sensitivity	Low sensitivity
	X		

#### Sensitivity Features:

Sensitivity	Feature(s)
High	Annual Crop Cultivation / Planted Pastures Rotation; Land capability; 06. Low-Moderate/07. Low-Moderate/08. Moderate
High	Annual Crop Cultivation / Planted Pastures Rotation; Land capability; 01. Very low/02. Very low/03. Low-Very low/04. Low-Very low/05. Low
Low	Land capability; 01. Very low/02. Very low/03. Low-Very low/04. Low-Very low/05. Low
Medium	Land capability; 06. Low-Moderate/07. Low-Moderate/08. Moderate

MAP OF RELATIVE ANIMAL SPECIES THEME SENSITIVITY

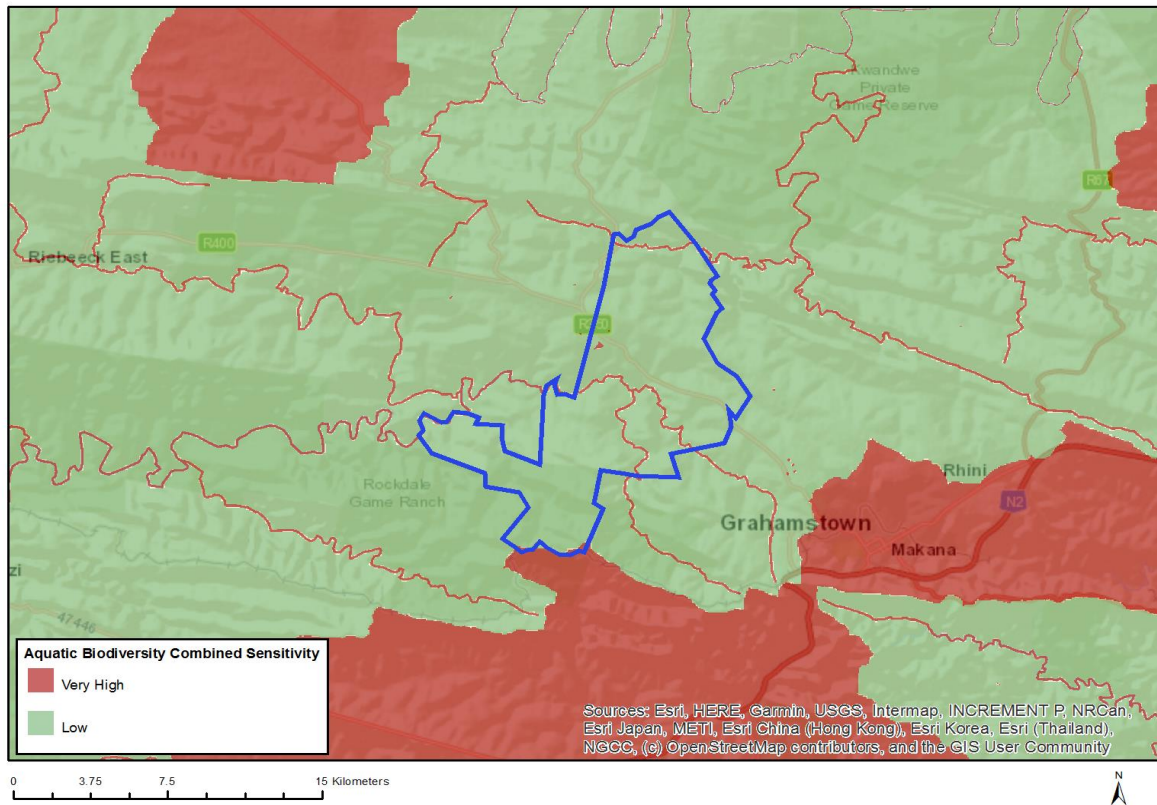


Very High sensitivity	High sensitivity	Medium sensitivity	Low sensitivity
	X		

Sensitivity Features:

Sensitivity	Feature(s)
High	Aves-Circus maurus
High	Mammalia-Redunca fulvorufula fulvorufula
Low	Low sensitivity
Medium	Insecta-Aslauga australis
Medium	Mammalia-Ourebia ourebi ourebi

## MAP OF RELATIVE AQUATIC BIODIVERSITY THEME SENSITIVITY

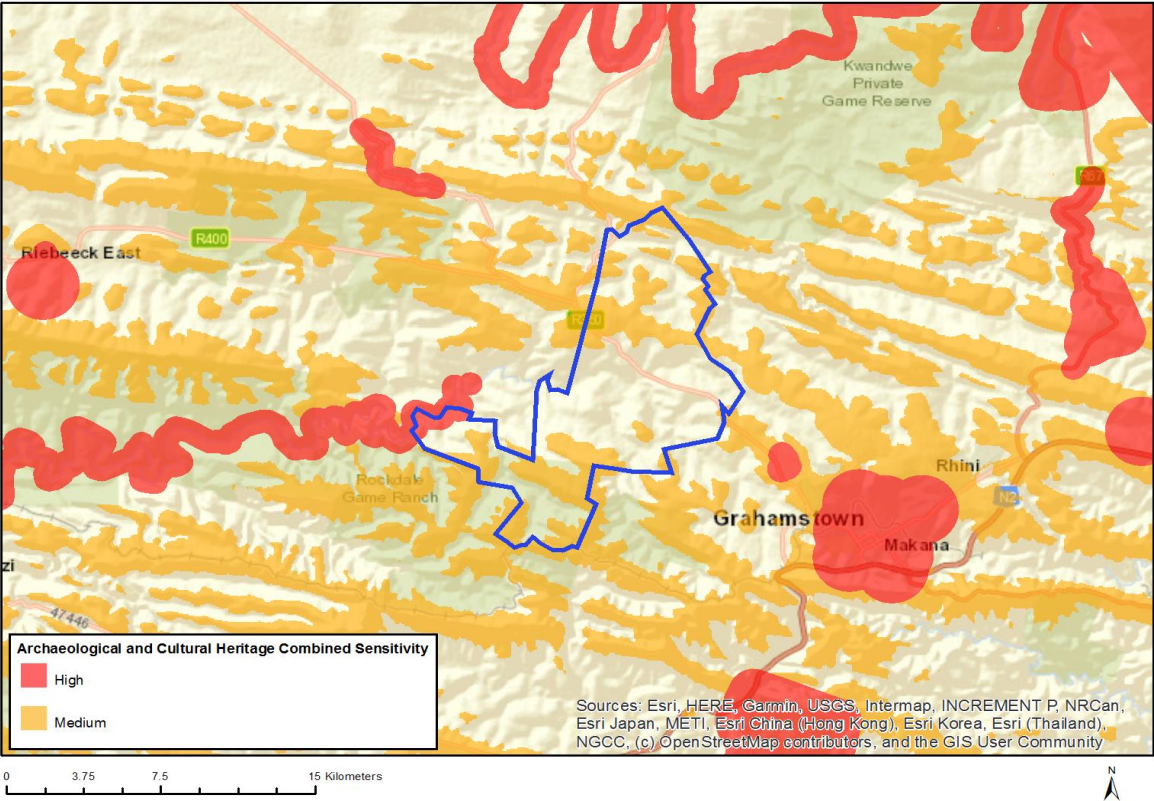


Very High sensitivity	High sensitivity	Medium sensitivity	Low sensitivity
X			

### Sensitivity Features:

Sensitivity	Feature(s)
Low	Low sensitivity
Very High	Rivers
Very High	Wetlands and Estuaries
Very High	Freshwater ecosystem priority area quinary catchments

# MAP OF RELATIVE ARCHAEOLOGICAL AND CULTURAL HERITAGE THEME SENSITIVITY

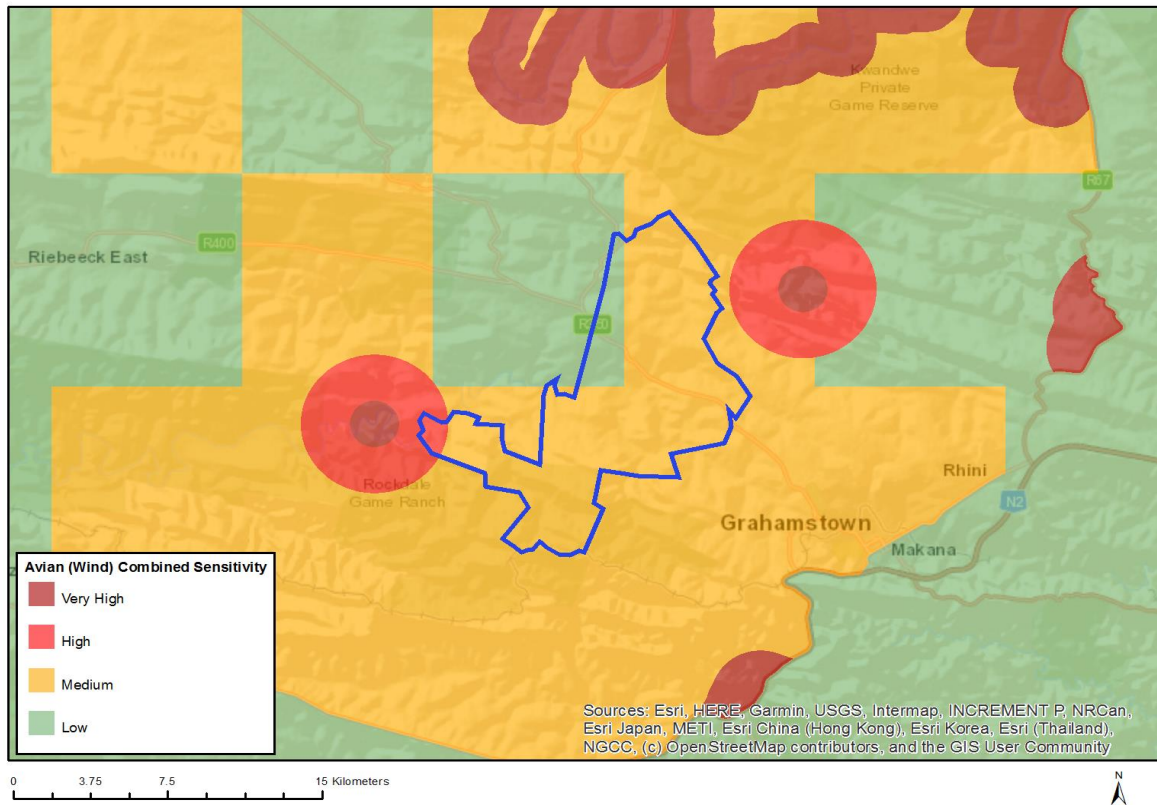


Very High sensitivity	High sensitivity	Medium sensitivity	Low sensitivity
	X		

**Sensitivity Features:**

Sensitivity	Feature(s)
High	Within 500 m of an important river
Medium	Mountain or ridge

## MAP OF RELATIVE AVIAN (WIND) THEME SENSITIVITY

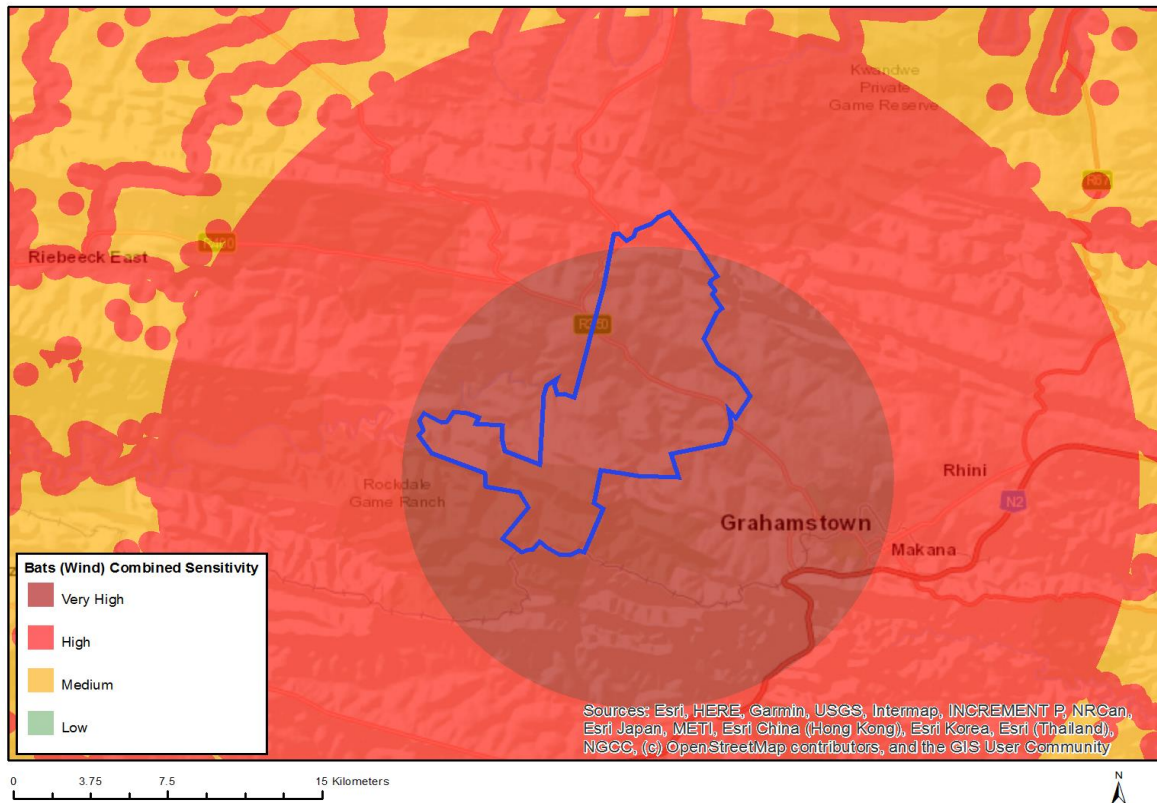


Very High sensitivity	High sensitivity	Medium sensitivity	Low sensitivity
	X		

### Sensitivity Features:

Sensitivity	Feature(s)
High	between 1 and 3 km from Lanner Falcon nest sites; areas where susceptible large terrestrial birds were found to be present
Low	Area Outside Sensitivities
Medium	areas where susceptible large terrestrial birds were found to be present

## MAP OF RELATIVE BATS (WIND) THEME SENSITIVITY

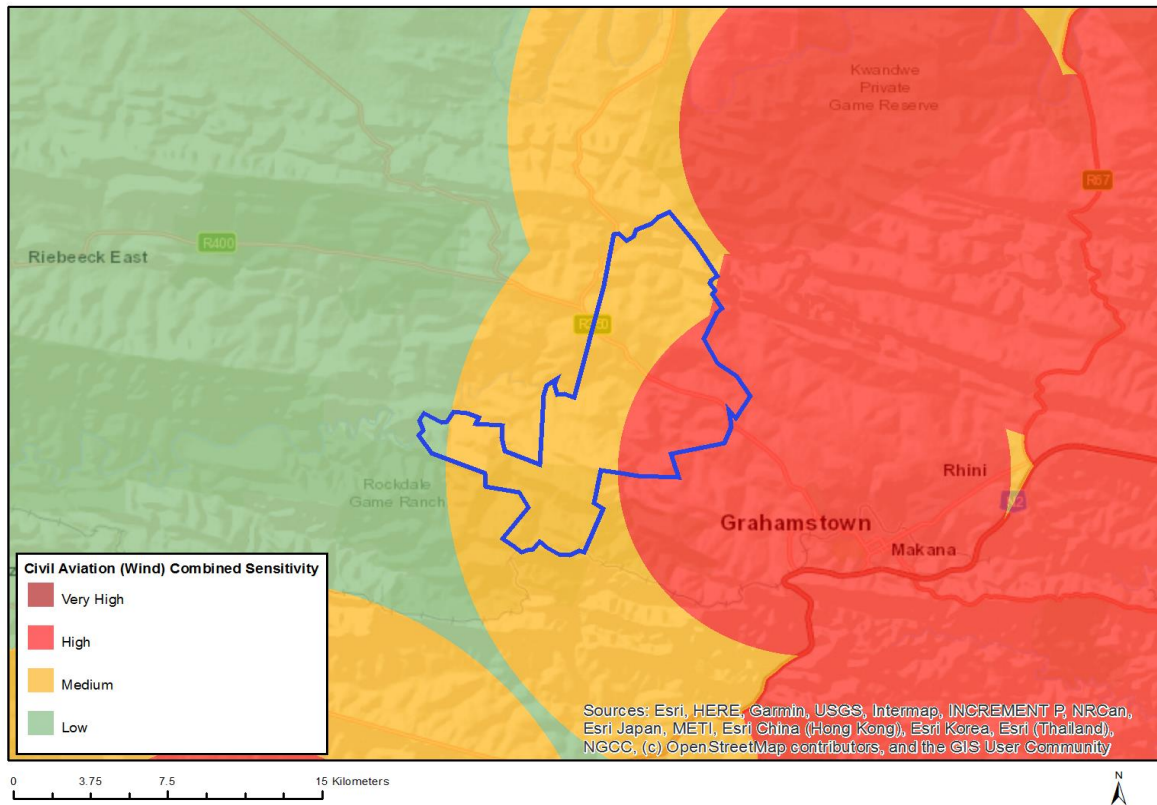


Very High sensitivity	High sensitivity	Medium sensitivity	Low sensitivity
X			

### Sensitivity Features:

Sensitivity	Feature(s)
High	Forest habitat
High	Between 10 and 20 km from a large bat roost
High	Bat roost
High	Within 500 m of a river
High	Wetland
High	Within 500 m of a wetland
Medium	Croplands
Medium	Within 10 km of an unconfirmed bat roost
Very High	Within 10 km of a large bat roost

## MAP OF RELATIVE CIVIL AVIATION (WIND) THEME SENSITIVITY



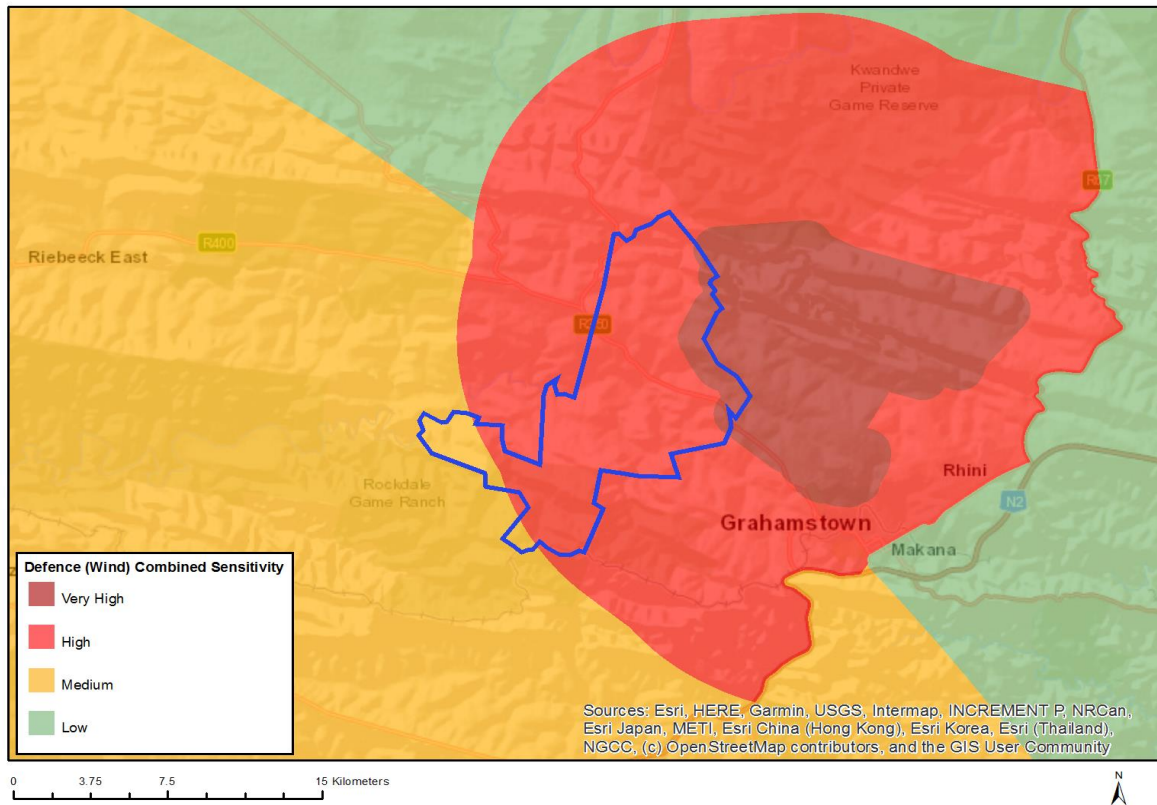
Very High sensitivity	High sensitivity	Medium sensitivity	Low sensitivity
	X		

### Sensitivity Features:

Sensitivity	Feature(s)
High	Within 8 km of other civil aviation aerodrome
High	Dangerous and restricted airspace as demarcated
Low	Low sensitivity
Medium	Between 8 and 15 km of other civil aviation aerodrome



## MAP OF RELATIVE DEFENCE (WIND) THEME SENSITIVITY

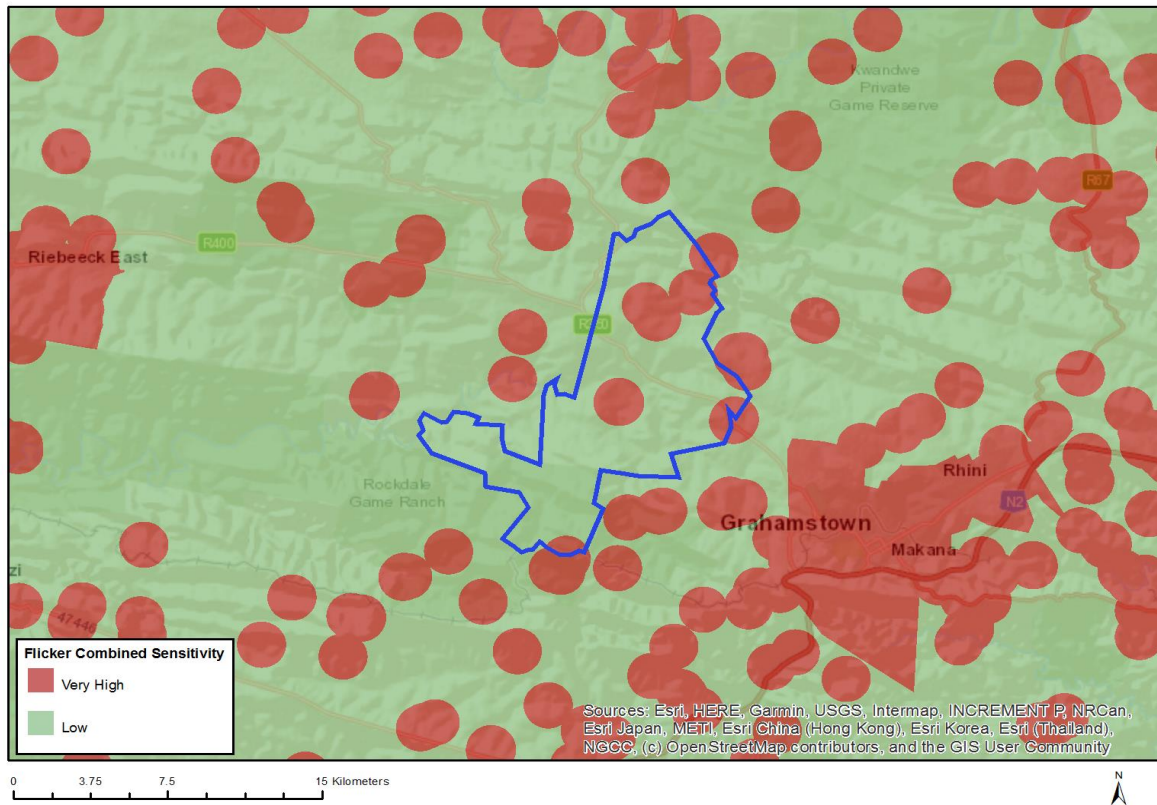


Very High sensitivity	High sensitivity	Medium sensitivity	Low sensitivity
X			

### Sensitivity Features:

Sensitivity	Feature(s)
High	Defence Site
Medium	Defence Site
Very High	Defence Site

## MAP OF RELATIVE FLICKER THEME SENSITIVITY

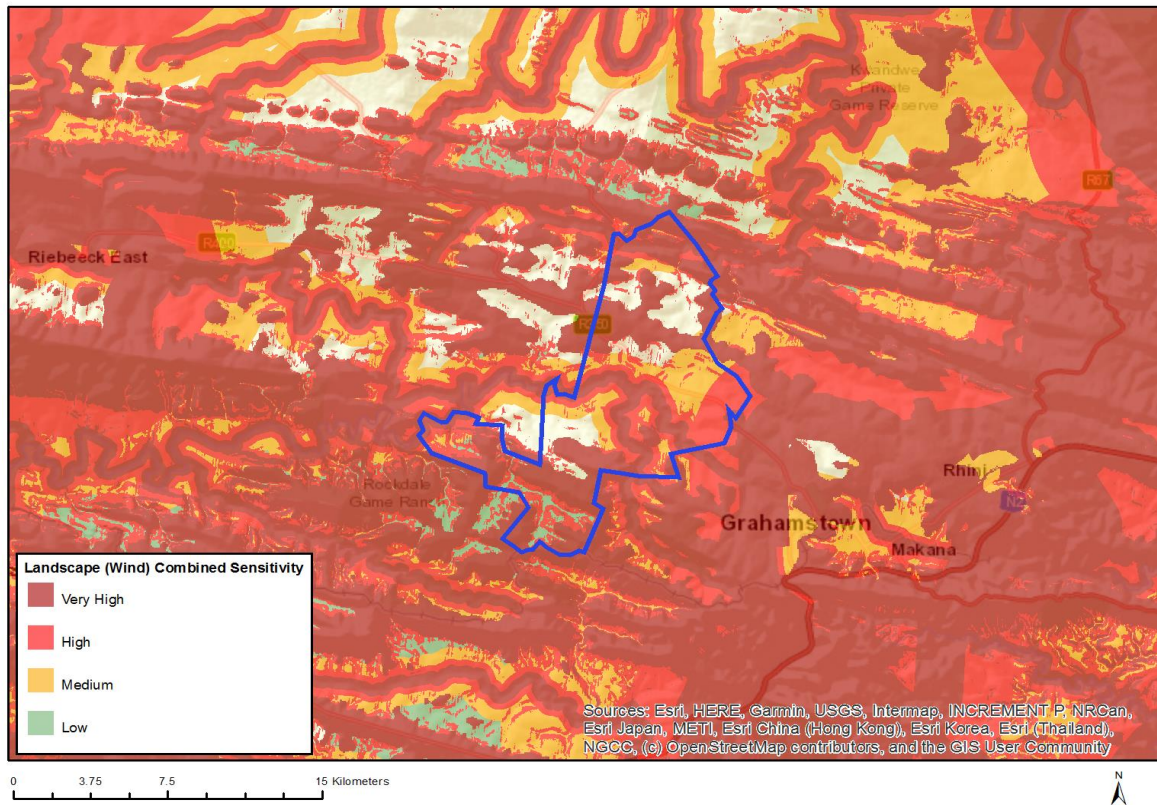


Very High sensitivity	High sensitivity	Medium sensitivity	Low sensitivity
X			

### Sensitivity Features:

Sensitivity	Feature(s)
Low	Area of low sensitivity
Very High	Potential temporarily or permanently inhabited residence

## MAP OF RELATIVE LANDSCAPE (WIND) THEME SENSITIVITY

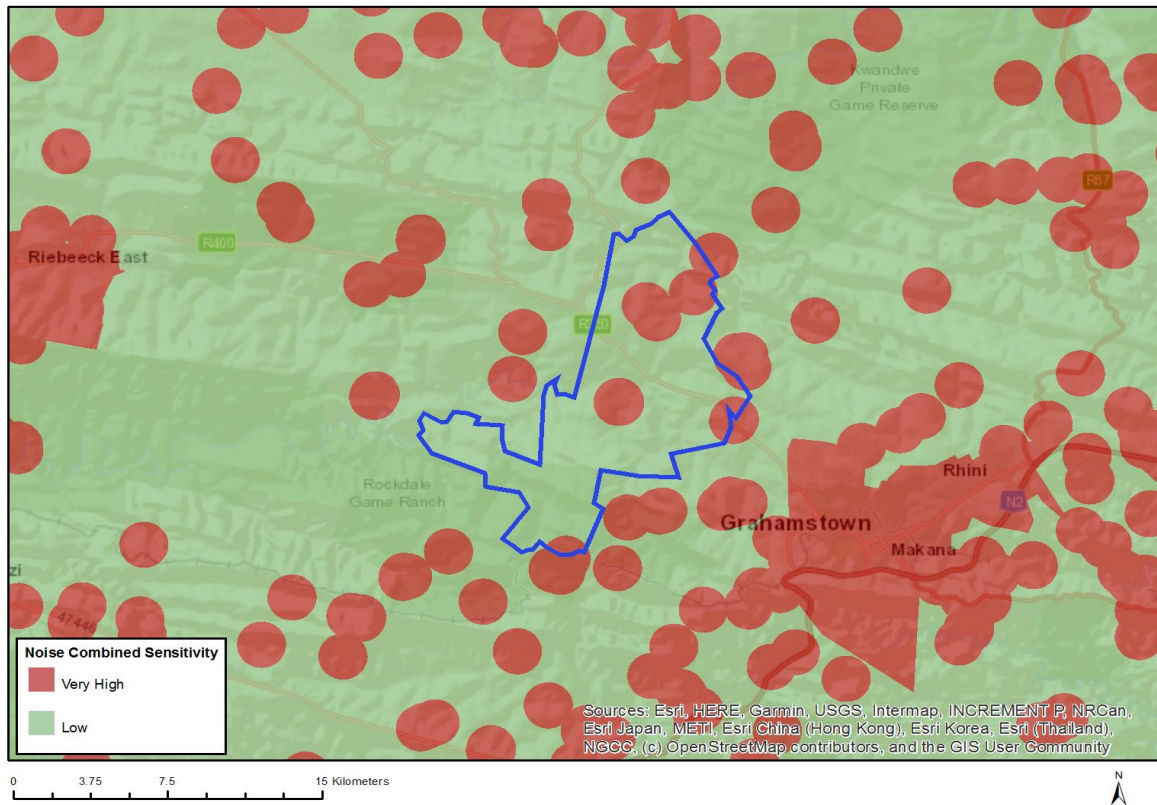


Very High sensitivity	High sensitivity	Medium sensitivity	Low sensitivity
X			

### Sensitivity Features:

Sensitivity	Feature(s)
High	Between 2 and 4 km of a town or village
High	Slope between 1:4 and 1:10
Low	Slope less than 1:10
Medium	Between 4 and 6 km of a town or village
Very High	Mountain tops and high ridges
Very High	Slope more than 1:4

## MAP OF RELATIVE NOISE THEME SENSITIVITY

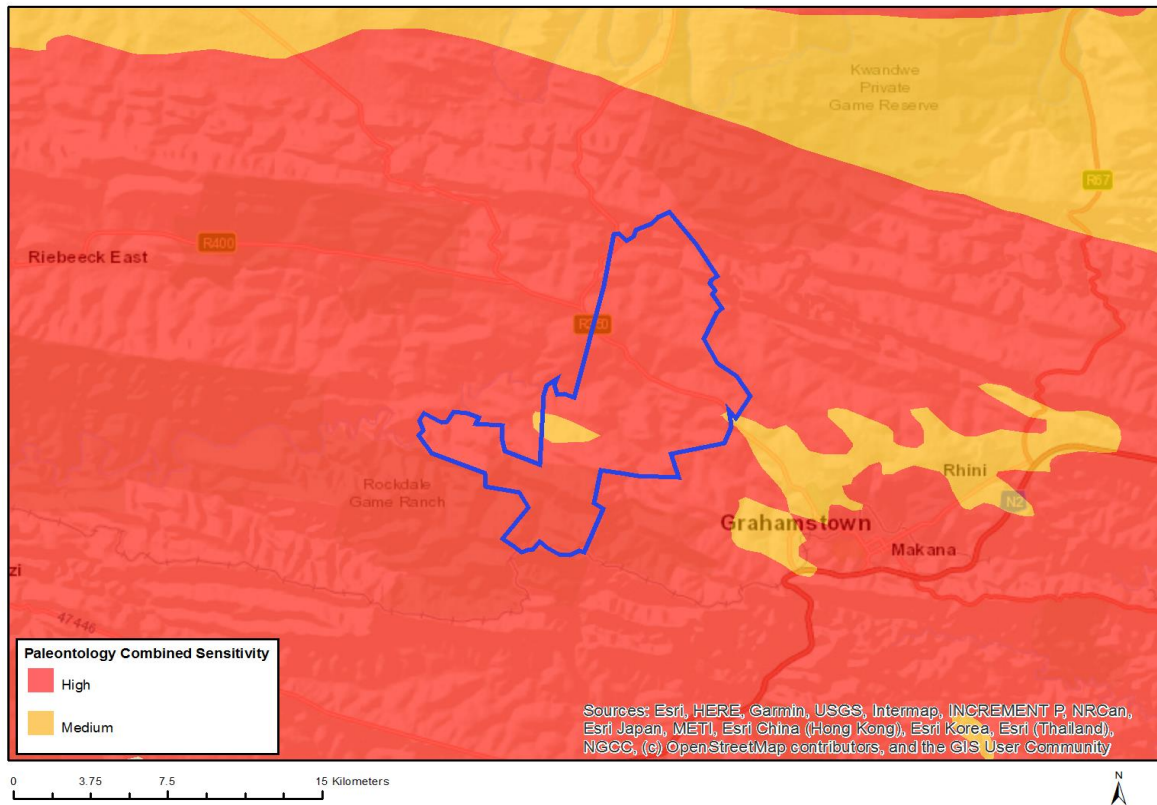


Very High sensitivity	High sensitivity	Medium sensitivity	Low sensitivity
X			

### Sensitivity Features:

Sensitivity	Feature(s)
Low	Area of low sensitivity
Very High	Potential temporarily or permanently inhabited residence

## MAP OF RELATIVE PALEONTOLOGY THEME SENSITIVITY

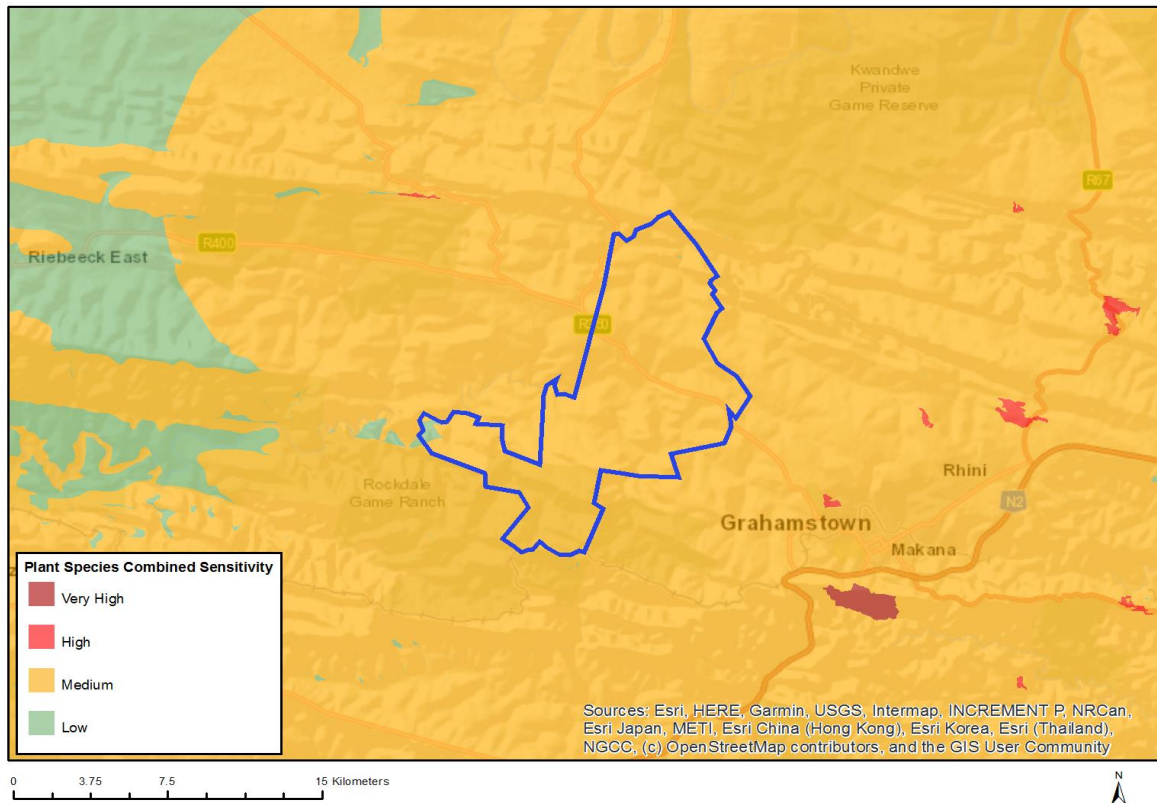


Very High sensitivity	High sensitivity	Medium sensitivity	Low sensitivity
	X		

### Sensitivity Features:

Sensitivity	Feature(s)
High	Rock units with a high paleontological sensitivity
Medium	Rock units with a medium paleontological sensitivity

## MAP OF RELATIVE PLANT SPECIES THEME SENSITIVITY

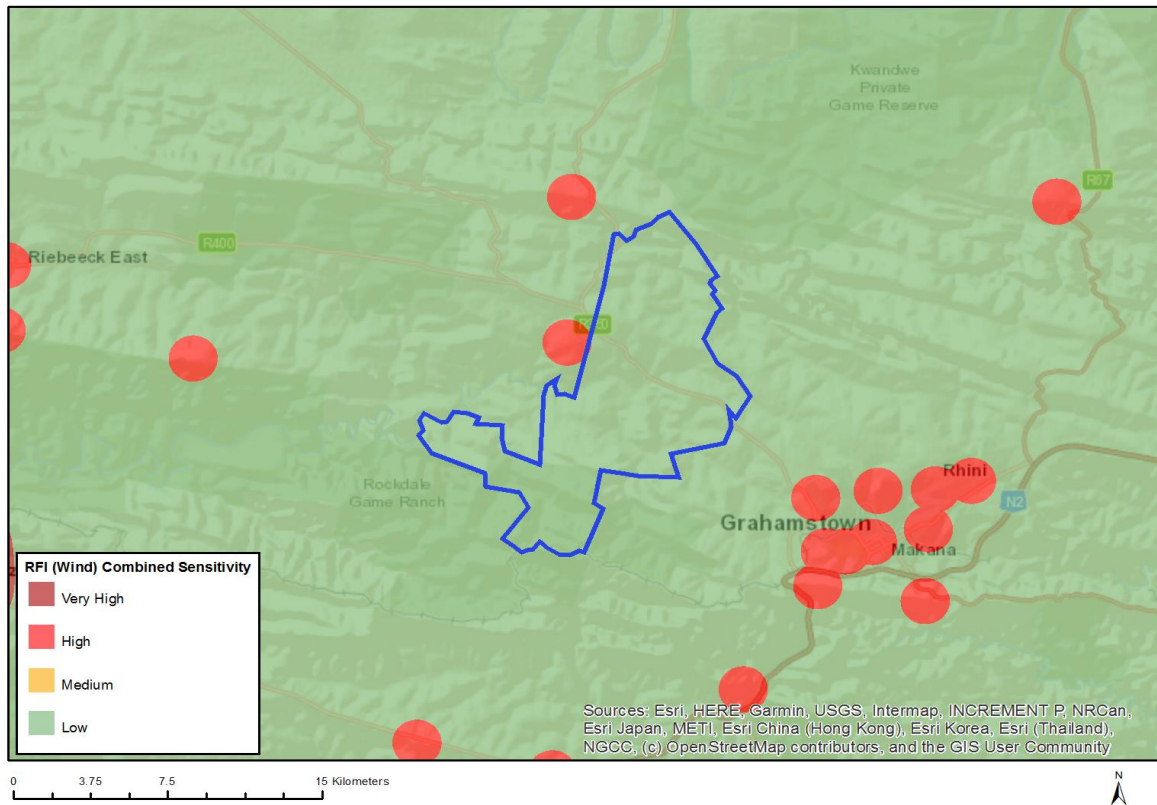


Very High sensitivity	High sensitivity	Medium sensitivity	Low sensitivity
		X	

### Sensitivity Features:

Sensitivity	Feature(s)
Low	Low sensitivity
Medium	Ocotea bullata
Medium	Sensitive species 185
Medium	Sensitive species 103
Medium	Syringodea flanaganii
Medium	Sensitive species 491
Medium	Caputia scaposa var. addoensis
Medium	Sensitive species 445
Medium	Faucaria tigrina
Medium	Sensitive species 348
Medium	Apodolirion macowanii
Medium	Isoetes wormaldii
Medium	Sensitive species 109
Medium	Sensitive species 123
Medium	Sensitive species 294
Medium	Pterygodium cleistogamum
Medium	Agathosma bicornuta
Medium	Sensitive species 655
Medium	Sensitive species 661
Medium	Searsia albomarginata
Medium	Sensitive species 333

## MAP OF RELATIVE RFI (WIND) THEME SENSITIVITY

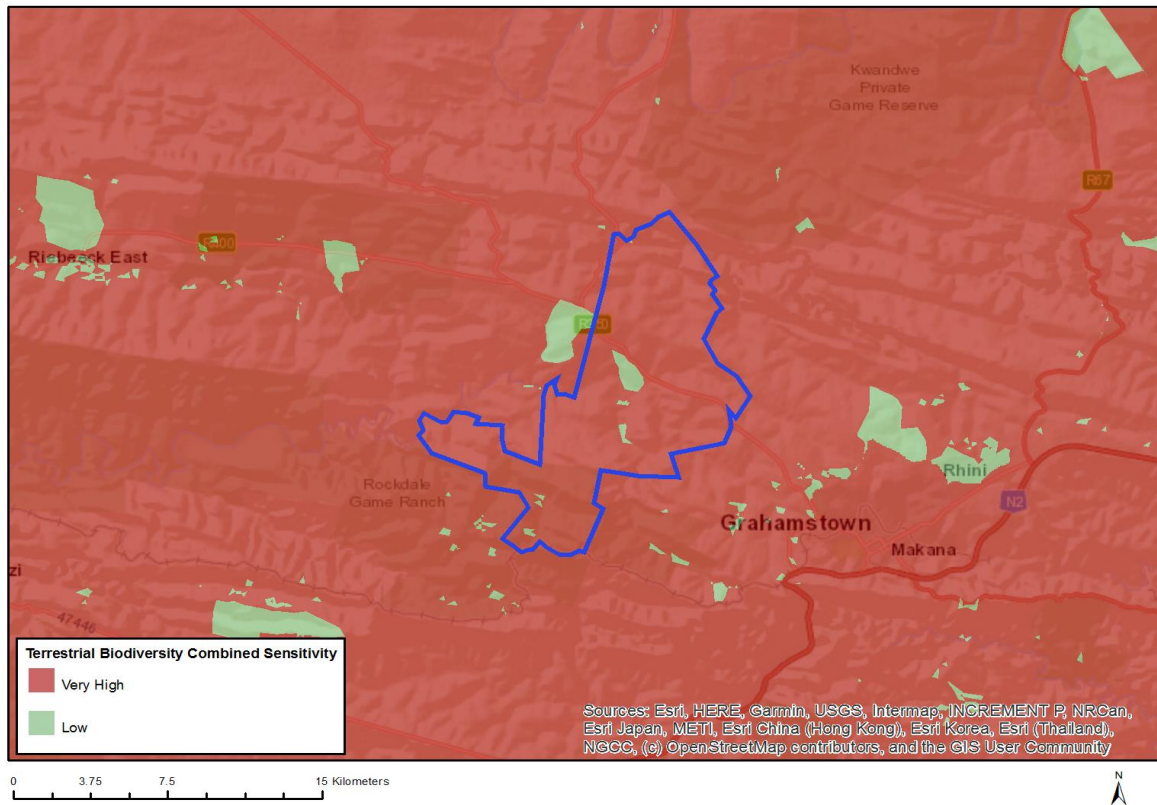


Very High sensitivity	High sensitivity	Medium sensitivity	Low sensitivity
	X		

### Sensitivity Features:

Sensitivity	Feature(s)
High	Within 1 km of a telecommunication facility;None;More than 60 km from a Weather Radar installation
Low	Low sensitivity for telecommunications;None;More than 60 km from a Weather Radar installation

## MAP OF RELATIVE TERRESTRIAL BIODIVERSITY THEME SENSITIVITY



Very High sensitivity	High sensitivity	Medium sensitivity	Low sensitivity
X			

### Sensitivity Features:

Sensitivity	Feature(s)
Low	Low Sensitivity
Very High	Critical Biodiversity Area 1
Very High	Critical Biodiversity Area 2
Very High	Ecological Support Area 1
Very High	Ecological Support Area 2
Very High	Forest
Very High	Freshwater ecosystem priority area quinary catchments
Very High	South African Protected Areas