

**SCREENING REPORT FOR AN ENVIRONMENTAL AUTHORIZATION OR
FOR A PART TWO AMENDMENT OF AN ENVIRONMENTAL AUTHORISATION
AS REQUIRED BY THE 2014 EIA REGULATIONS – PROPOSED SITE
ENVIRONMENTAL SENSITIVITY**

EIA Reference number: TBC

Project name: Wind Relic - Ripponn (West 2)

Project title: Wind Relic - Ripponn (West 2)

Date screening report generated: 31/08/2020 08:56:38

Applicant: Ripponn (Pty) Ltd

Compiler: Lisa Opperman

Compiler signature:

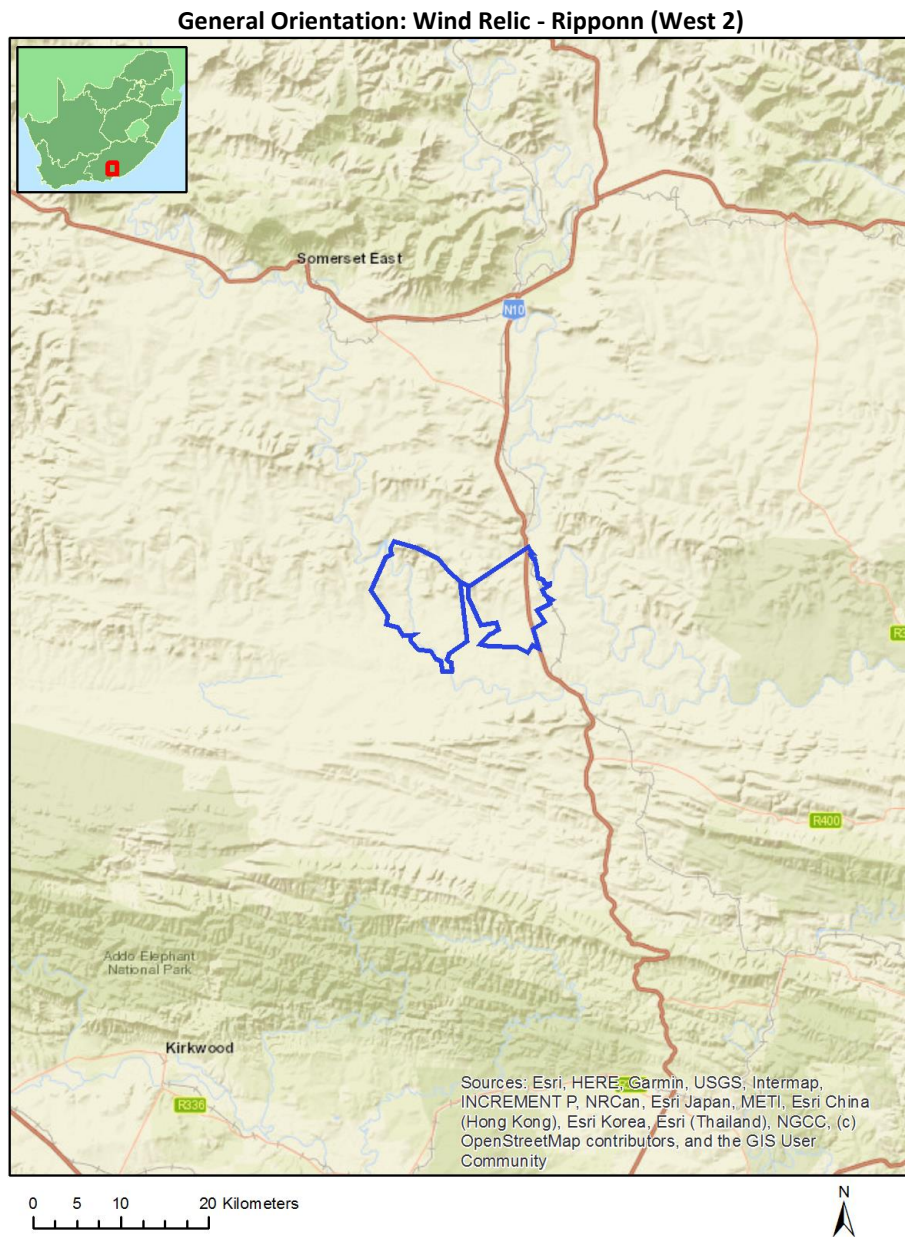
.....

Table of Contents

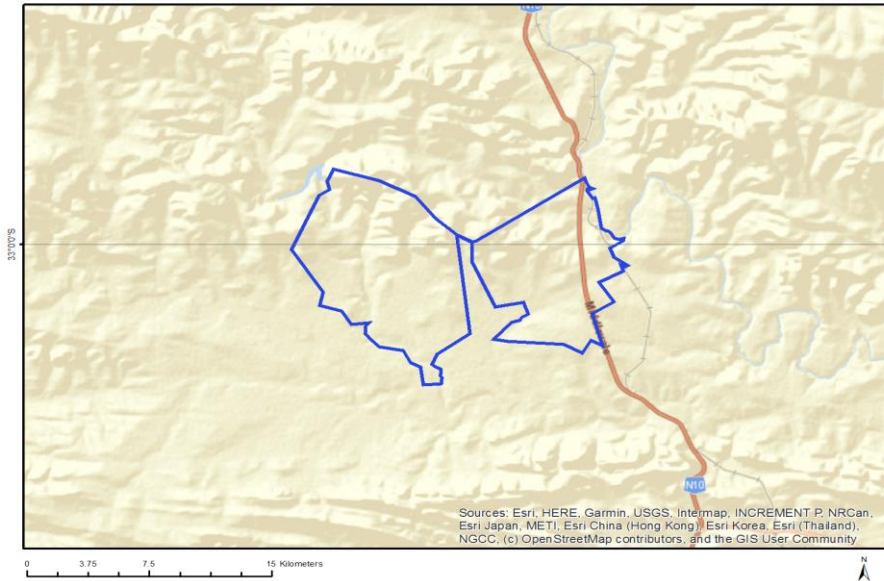
Proposed Project Location	3
Orientation map 1: General location	3
Map of proposed site and relevant area(s)	4
Cadastral details of the proposed site	4
Wind and Solar developments with an approved Environmental Authorisation or applications under consideration within 30 km of the proposed area	6
Environmental Management Frameworks relevant to the application	6
Environmental screening results and assessment outcomes	6
Relevant development incentives, restrictions, exclusions or prohibitions	6
Map indicating proposed development footprint within applicable development incentive, restriction, exclusion or prohibition zones	7
Proposed Development Area Environmental Sensitivity	7
Specialist assessments identified	8
Results of the environmental sensitivity of the proposed area	10
MAP OF RELATIVE AGRICULTURE THEME SENSITIVITY	10
MAP OF RELATIVE ANIMAL SPECIES THEME SENSITIVITY	11
MAP OF RELATIVE AQUATIC BIODIVERSITY THEME SENSITIVITY	12
MAP OF RELATIVE ARCHAEOLOGICAL AND CULTURAL HERITAGE THEME SENSITIVITY	13
MAP OF RELATIVE AVIAN (WIND) THEME SENSITIVITY	14
MAP OF RELATIVE BATS (WIND) THEME SENSITIVITY	15
MAP OF RELATIVE CIVIL AVIATION (WIND) THEME SENSITIVITY	16
MAP OF RELATIVE DEFENCE (WIND) THEME SENSITIVITY	17
MAP OF RELATIVE FLICKER THEME SENSITIVITY	18
MAP OF RELATIVE LANDSCAPE (WIND) THEME SENSITIVITY	19
MAP OF RELATIVE NOISE THEME SENSITIVITY	20
MAP OF RELATIVE PALEONTOLOGY THEME SENSITIVITY	21
MAP OF RELATIVE PLANT SPECIES THEME SENSITIVITY	22
MAP OF RELATIVE RFI (WIND) THEME SENSITIVITY	23
MAP OF RELATIVE TERRESTRIAL BIODIVERSITY THEME SENSITIVITY	24

Proposed Project Location

Orientation map 1: General location



Map of proposed site and relevant area(s)



Cadastral details of the proposed site

Property details:

No	Farm Name	Farm/ Erf No	Portion	Latitude	Longitude	Property Type
1	MOORDENAARS DRIFT	174	0	32°57'9.88S	25°50'15.3E	Farm
2	DRIEFONTEIN	259	0	33°4'23.45S	25°49'42.39E	Farm
3	WILTON	409	0	32°57'57.15S	25°45'36.52E	Farm
4		431	0	33°2'39.55S	25°47'55.85E	Farm
5	BLOEMHOF	166	0	32°55'56.13S	25°41'50.3E	Farm
6	VOORSPOED	175	0	32°58'40.77S	25°50'8.45E	Farm
7		212	0	32°59'8.34S	25°41'32.66E	Farm
8	BOTHAS HOOP	358	0	33°5'38.23S	25°43'56.56E	Farm
9		385	0	33°2'48.26S	25°38'36.98E	Farm
10	HARTEBEEST KUIL	220	0	32°59'52.86S	25°47'47.17E	Farm
11	PAAUWKOM	223	0	33°2'6.58S	25°50'23.57E	Farm
12	KLEIN BEGIN	230	0	33°2'28.4S	25°46'9.51E	Farm
13		382	0	32°58'1.79S	25°38'36.46E	Farm
14	DRAAI HOEK	221	0	33°0'20.81S	25°50'37.07E	Farm
15		381	0	33°0'55.11S	25°42'31.64E	Farm
16		434	0	33°4'2.22S	25°48'12.75E	Farm
17	VOORSPOED	175	15	32°58'58.9S	25°49'47.11E	Farm Portion
18	VOORSPOED	175	14	32°59'32.82S	25°49'58E	Farm Portion
19		212	2	32°59'6.25S	25°41'32.23E	Farm Portion
20	DRAAI HOEK	221	5	33°0'44.08S	25°50'26.28E	Farm Portion
21	MOORDENAARS DRIFT	174	3	32°57'54.29S	25°49'24.06E	Farm Portion
22	HARTEBEEST KUIL	220	2	32°59'51.57S	25°49'18E	Farm Portion
23	DRAAI HOEK	221	31	33°0'48.01S	25°48'58.82E	Farm Portion
24	DRAAI HOEK	221	29	33°1'43.56S	25°49'7.95E	Farm Portion
25		381	0	33°0'37.12S	25°42'2.41E	Farm Portion
26	VOORSPOED	175	10	32°58'11.98S	25°49'37.7E	Farm Portion
27	HARTEBEEST KUIL	220	3	32°58'24.05S	25°49'16.15E	Farm Portion

28	HARTEBEEST KUIL	220	2	33°0'5.16S	25°48'17.49E	Farm Portion
29	HARTEBEEST KUIL	220	5	32°58'31.19S	25°48'55.17E	Farm Portion
30	DRAAI HOEK	221	4	33°1'16.29S	25°48'58.37E	Farm Portion
31	DRAAI HOEK	221	5	33°1'56.67S	25°49'3.76E	Farm Portion
32	HARTEBEEST KUIL	220	4	32°59'50.26S	25°48'53.12E	Farm Portion
33	DRAAI HOEK	221	18	33°1'16.04S	25°50'19.83E	Farm Portion
34	DRAAI HOEK	221	21	33°0'37.82S	25°49'2.32E	Farm Portion
35	KLEIN BEGIN	230	3	33°1'50.6S	25°48'0.57E	Farm Portion
36	DRIEFONTEIN	259	3	33°4'23.45S	25°49'42.39E	Farm Portion
37		381	0	33°3'50.78S	25°42'47E	Farm Portion
38		381	8	32°58'55.74S	25°41'37.17E	Farm Portion
39		382	2	32°58'22.26S	25°39'39.98E	Farm Portion
40	HARTEBEEST KUIL	220	1	33°1'0.05S	25°47'1.17E	Farm Portion
41	DRAAI HOEK	221	3	33°1'51.68S	25°48'40.81E	Farm Portion
42	DRAAI HOEK	221	0	32°59'54.63S	25°50'55.75E	Farm Portion
43	DRAAI HOEK	221	3	33°1'51.68S	25°48'40.81E	Farm Portion
44	DRAAI HOEK	221	21	33°1'7.73S	25°48'32.23E	Farm Portion
45	PAAUWKOM	223	0	33°2'6.26S	25°50'24.39E	Farm Portion
46		381	12	32°59'11.47S	25°41'5.9E	Farm Portion
47		385	4	33°2'0.07S	25°39'56.39E	Farm Portion
48		431	0	33°2'39.55S	25°47'55.85E	Farm Portion
49		381	8	32°59'10.23S	25°41'15.16E	Farm Portion
50	BLOEMHOF	166	1	32°56'30.31S	25°42'31.19E	Farm Portion
51	VOORSPOED	175	1	32°58'4.81S	25°49'29.78E	Farm Portion
52	HARTEBEEST KUIL	220	0	32°59'32.4S	25°47'10.39E	Farm Portion
53	KLEIN BEGIN	230	0	33°1'42.64S	25°45'41.47E	Farm Portion
54	DRIEFONTEIN	259	3	33°4'14.87S	25°49'31E	Farm Portion
55		381	5	32°58'16.92S	25°40'30.22E	Farm Portion
56		381	6	33°0'31.75S	25°40'34.69E	Farm Portion
57		381	3	33°3'32.79S	25°43'17.46E	Farm Portion
58	WILTON	409	0	32°57'57.43S	25°45'36.19E	Farm Portion
59		434	0	33°4'2.22S	25°48'12.75E	Farm Portion
60		381	1	33°1'42.97S	25°41'52.33E	Farm Portion
61		382	0	32°58'21.62S	25°38'11.64E	Farm Portion
62	KLEIN BEGIN	230	2	33°1'14.82S	25°46'17.36E	Farm Portion
63	BOTHAS HOOP	358	0	33°4'38.28S	25°44'2.19E	Farm Portion
64		381	7	32°59'48.08S	25°42'44.89E	Farm Portion
65	VOORSPOED	175	16	32°58'27.8S	25°49'44.26E	Farm Portion
66	HARTEBEEST KUIL	220	0	32°58'39.24S	25°49'7.03E	Farm Portion
67	DRAAI HOEK	221	26	33°0'48.53S	25°50'21.75E	Farm Portion
68	DRAAI HOEK	221	30	33°1'7.37S	25°49'2.25E	Farm Portion
69	KLEIN BEGIN	230	5	33°3'27.19S	25°45'56.91E	Farm Portion
70	BOTHAS HOOP	358	2	33°3'42.28S	25°44'10.85E	Farm Portion
71		381	2	33°1'9.69S	25°43'13.66E	Farm Portion
72		431	0	33°2'39.55S	25°47'55.85E	Farm Portion
73	DRAAI HOEK	221	5	33°1'36.12S	25°49'25.05E	Farm Portion
74	DRAAI HOEK	221	4	33°0'42.59S	25°49'34.59E	Farm Portion
75	PAAUWKOM	223	2	33°2'29.43S	25°49'25.64E	Farm Portion
76	PAAUWKOM	223	0	33°2'6.26S	25°50'24.39E	Farm Portion
77		381	9	32°58'57.89S	25°40'39.86E	Farm Portion

Development footprint¹ vertices:
No development footprint(s) specified.

¹ “development footprint”, means the area within the site on which the development will take place and includes all ancillary developments for example roads, power lines, boundary walls, paving etc. which require vegetation clearance or which will be disturbed and for which the application has been submitted.

Wind and Solar developments with an approved Environmental Authorisation or applications under consideration within 30 km of the proposed area

No nearby wind or solar developments found.

Environmental Management Frameworks relevant to the application

No intersections with EMF areas found.

Environmental screening results and assessment outcomes

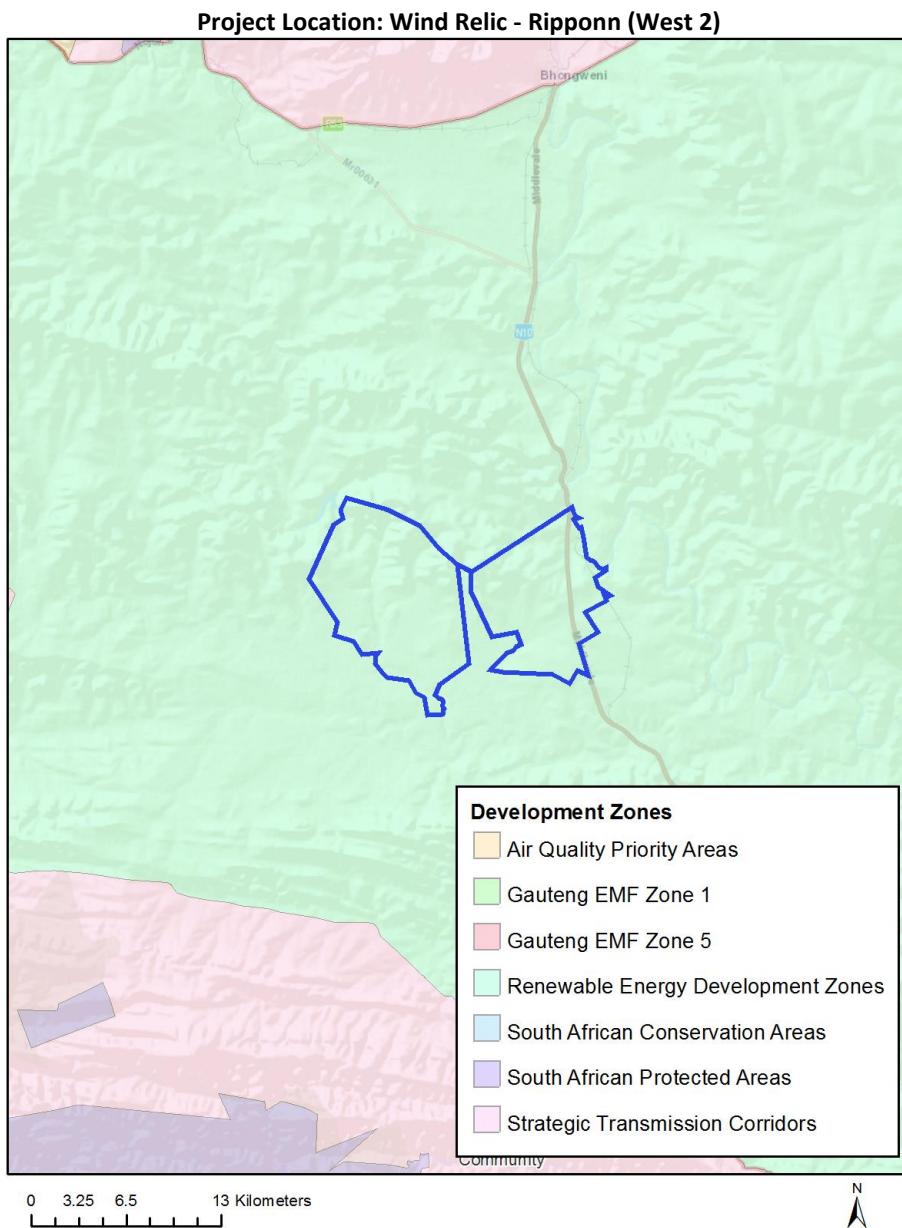
The following sections contain a summary of any development incentives, restrictions, exclusions or prohibitions that apply to the proposed development site as well as the most environmental sensitive features on the site based on the site sensitivity screening results for the application classification that was selected. The application classification selected for this report is: Utilities Infrastructure | Electricity | Generation | Renewable | Wind | Wind.

Relevant development incentives, restrictions, exclusions or prohibitions

The following development incentives, restrictions, exclusions or prohibitions and their implications that apply to this site are indicated below.

Incentive, restriction or prohibition	Implication
Strategic Transmission Corridor-Eastern corridor	https://screening.environment.gov.za/ScreeningDownloads/DevelopmentZones/GNR_350_of_13_April_2017.pdf
Renewable energy development zones 3-Cookhouse	https://screening.environment.gov.za/ScreeningDownloads/DevelopmentZones/GNR_350_of_13_April_2017.pdf

Map indicating proposed development footprint within applicable development incentive, restriction, exclusion or prohibition zones



Proposed Development Area Environmental Sensitivity

The following summary of the development site environmental sensitivities is identified. Only the highest environmental sensitivity is indicated. The footprint environmental sensitivities for the proposed development footprint as identified, are indicative only and must be verified on site by a suitably qualified person before the specialist assessments identified below can be confirmed.

Theme	Very High sensitivity	High sensitivity	Medium sensitivity	Low sensitivity
Agriculture Theme	X			
Animal Species Theme		X		

Aquatic Biodiversity Theme	X			
Archaeological and Cultural Heritage Theme		X		
Avian (Wind) Theme	X			
Bats (Wind) Theme		X		
Civil Aviation (Wind) Theme		X		
Defence (Wind) Theme			X	
Flicker Theme	X			
Landscape (Wind) Theme	X			
Noise Theme	X			
Paleontology Theme		X		
Plant Species Theme			X	
RFI (Wind) Theme		X		
Terrestrial Biodiversity Theme	X			

Specialist assessments identified

Based on the selected classification, and the environmental sensitivities of the proposed development footprint, the following list of specialist assessments have been identified for inclusion in the assessment report. It is the responsibility of the EAP to confirm this list and to motivate in the assessment report, the reason for not including any of the identified specialist study including the provision of photographic evidence of the site situation.

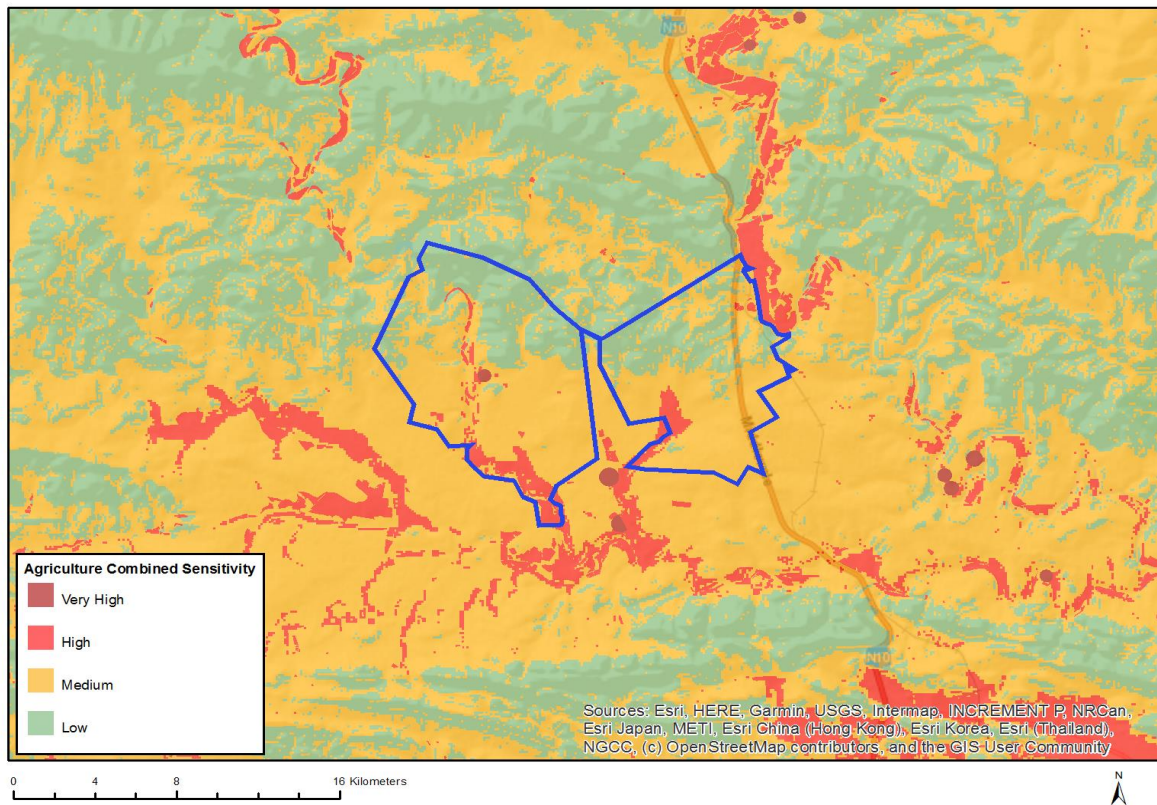
N o	Specialist assessment	Assessment Protocol
1	Agricultural Impact Assessment	https://screening.environment.gov.za/ScreeningDownloads/AssessmentProtocols/DraftGazetted_Agriculture_Assessment_Protocols.pdf
2	Landscape/Visual Impact Assessment	https://screening.environment.gov.za/ScreeningDownloads/AssessmentProtocols/DraftGazetted_General_Requirement_Assessment_Protocols.pdf
3	Archaeological and Cultural Heritage Impact Assessment	https://screening.environment.gov.za/ScreeningDownloads/AssessmentProtocols/DraftGazetted_General_Requirement_Assessment_Protocols.pdf
4	Palaeontology Impact Assessment	https://screening.environment.gov.za/ScreeningDownloads/AssessmentProtocols/DraftGazetted_General_Requirement_Assessment_Protocols.pdf
5	Terrestrial Biodiversity Impact Assessment	https://screening.environment.gov.za/ScreeningDownloads/AssessmentProtocols/DraftGazetted_Terrestrial_Biodiversity_Assessment_Protocols.pdf

	ment	
6	Aquatic Biodiversity Impact Assessment	https://screening.environment.gov.za/ScreeningDownloads/AssessmentProtocols/DraftGazetted_Aquatic_Biodiversity_Assessment.pdf
7	Avian Impact Assessment	https://screening.environment.gov.za/ScreeningDownloads/AssessmentProtocols/DraftGazetted_General_Requirement_Assessment_Protocols.pdf
8	Civil Aviation Assessment	https://screening.environment.gov.za/ScreeningDownloads/AssessmentProtocols/DraftGazetted_Civil_Aviation_Installations_Assessment_Protocols.pdf
9	Defense Assessment	https://screening.environment.gov.za/ScreeningDownloads/AssessmentProtocols/DraftGazetted_Defence_Installations_Assessment_Protocols.pdf
10	RFI Assessment	https://screening.environment.gov.za/ScreeningDownloads/AssessmentProtocols/DraftGazetted_General_Requirement_Assessment_Protocols.pdf
11	Noise Impact Assessment	https://screening.environment.gov.za/ScreeningDownloads/AssessmentProtocols/DraftGazetted_Noise_Impacts_Assessment_Protocols.pdf
12	Flicker Assessment	https://screening.environment.gov.za/ScreeningDownloads/AssessmentProtocols/DraftGazetted_General_Requirement_Assessment_Protocols.pdf
13	Traffic Impact Assessment	https://screening.environment.gov.za/ScreeningDownloads/AssessmentProtocols/DraftGazetted_General_Requirement_Assessment_Protocols.pdf
14	Geotechnical Assessment	https://screening.environment.gov.za/ScreeningDownloads/AssessmentProtocols/DraftGazetted_General_Requirement_Assessment_Protocols.pdf
15	Socio-Economic Assessment	https://screening.environment.gov.za/ScreeningDownloads/AssessmentProtocols/DraftGazetted_General_Requirement_Assessment_Protocols.pdf
16	Plant Species Assessment	https://screening.environment.gov.za/ScreeningDownloads/AssessmentProtocols/DraftGazetted_General_Requirement_Assessment_Protocols.pdf
17	Animal Species Assessment	https://screening.environment.gov.za/ScreeningDownloads/AssessmentProtocols/DraftGazetted_General_Requirement_Assessment_Protocols.pdf

Results of the environmental sensitivity of the proposed area.

The following section represents the results of the screening for environmental sensitivity of the proposed site for relevant environmental themes associated with the project classification. It is the duty of the EAP to ensure that the environmental themes provided by the screening tool are comprehensive and complete for the project. Refer to the disclaimer.

MAP OF RELATIVE AGRICULTURE THEME SENSITIVITY

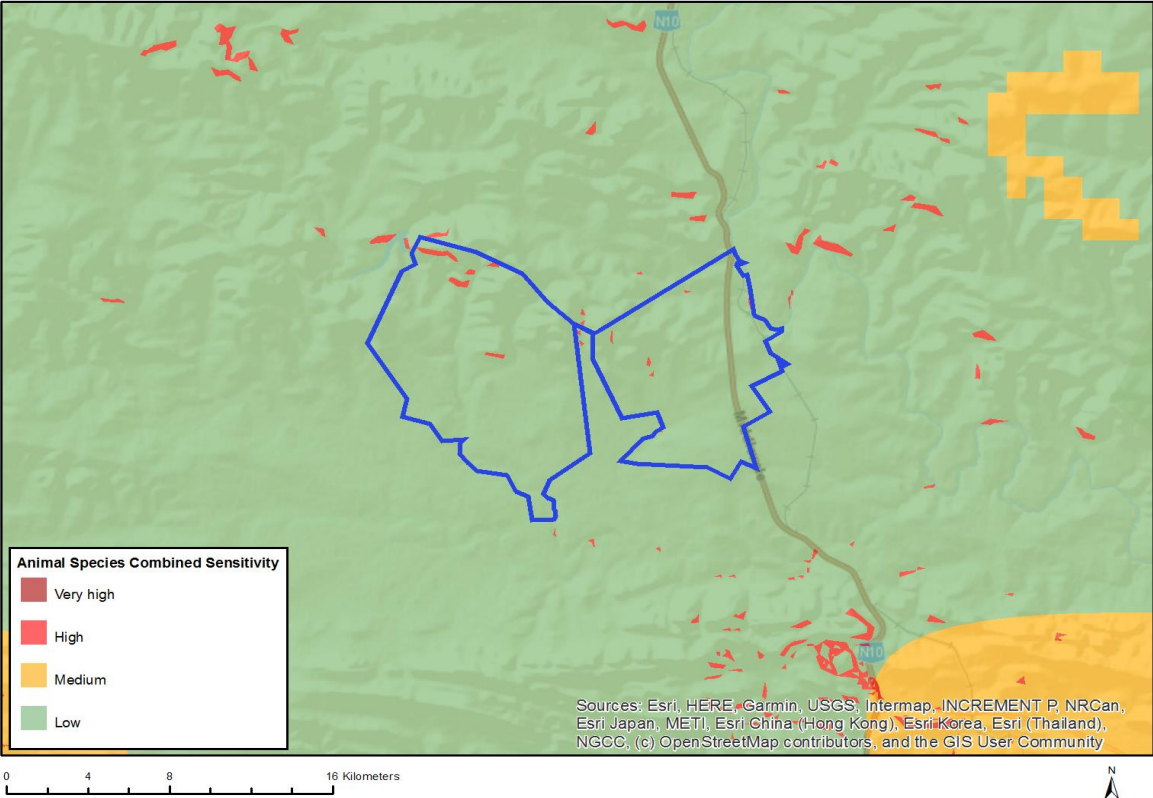


Very High sensitivity	High sensitivity	Medium sensitivity	Low sensitivity
X			

Sensitivity Features:

Sensitivity	Feature(s)
High	Land capability;09. Moderate-High/10. Moderate-High
High	Annual Crop Cultivation / Planted Pastures Rotation;Land capability;09. Moderate-High/10. Moderate-High
High	Annual Crop Cultivation / Planted Pastures Rotation;Land capability;06. Low-Moderate/07. Low-Moderate/08. Moderate
High	Annual Crop Cultivation / Planted Pastures Rotation;Land capability;01. Very low/02. Very low/03. Low-Very low/04. Low-Very low/05. Low
Low	Land capability;01. Very low/02. Very low/03. Low-Very low/04. Low-Very low/05. Low
Medium	Land capability;06. Low-Moderate/07. Low-Moderate/08. Moderate
Very High	Pivot Irrigation;Land capability;09. Moderate-High/10. Moderate-High
Very High	Pivot Irrigation;Land capability;06. Low-Moderate/07. Low-Moderate/08. Moderate

MAP OF RELATIVE ANIMAL SPECIES THEME SENSITIVITY

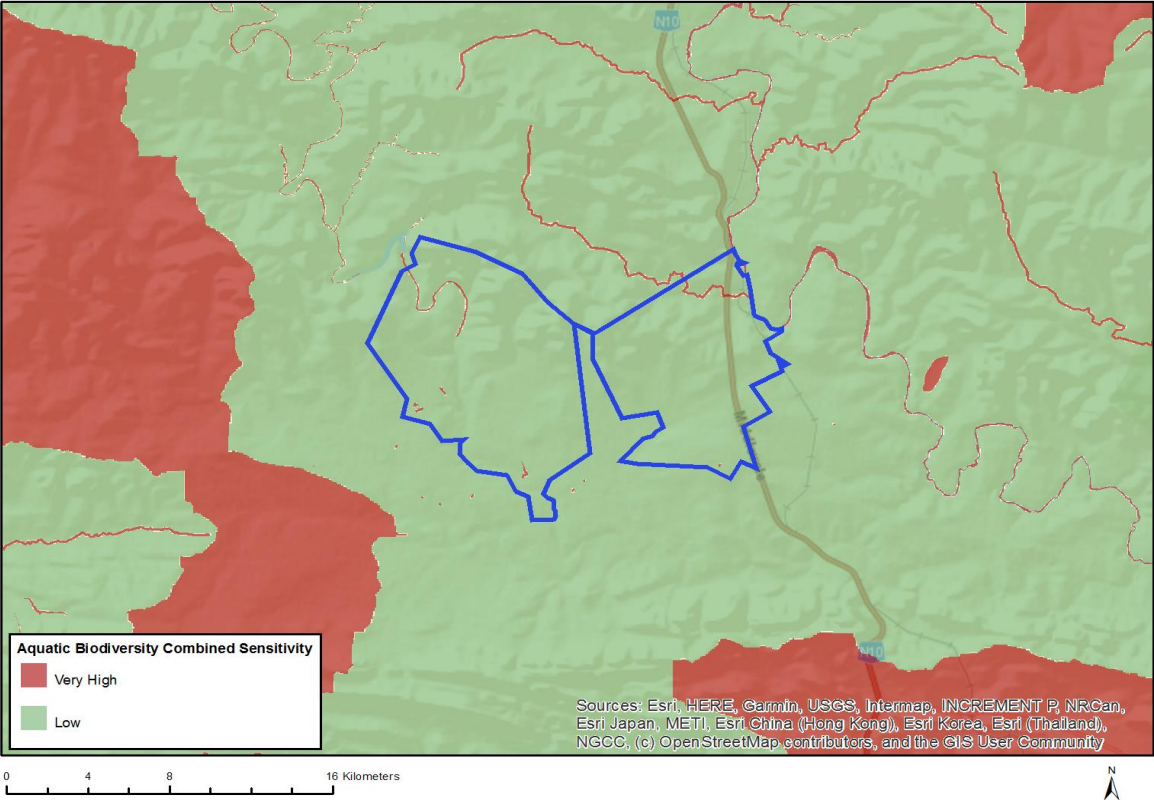


Very High sensitivity	High sensitivity	Medium sensitivity	Low sensitivity
	X		

Sensitivity Features:

Sensitivity	Feature(s)
High	Aves-Aquila verreauxii
High	Aves-Circus maurus
Low	Low sensitivity

MAP OF RELATIVE AQUATIC BIODIVERSITY THEME SENSITIVITY

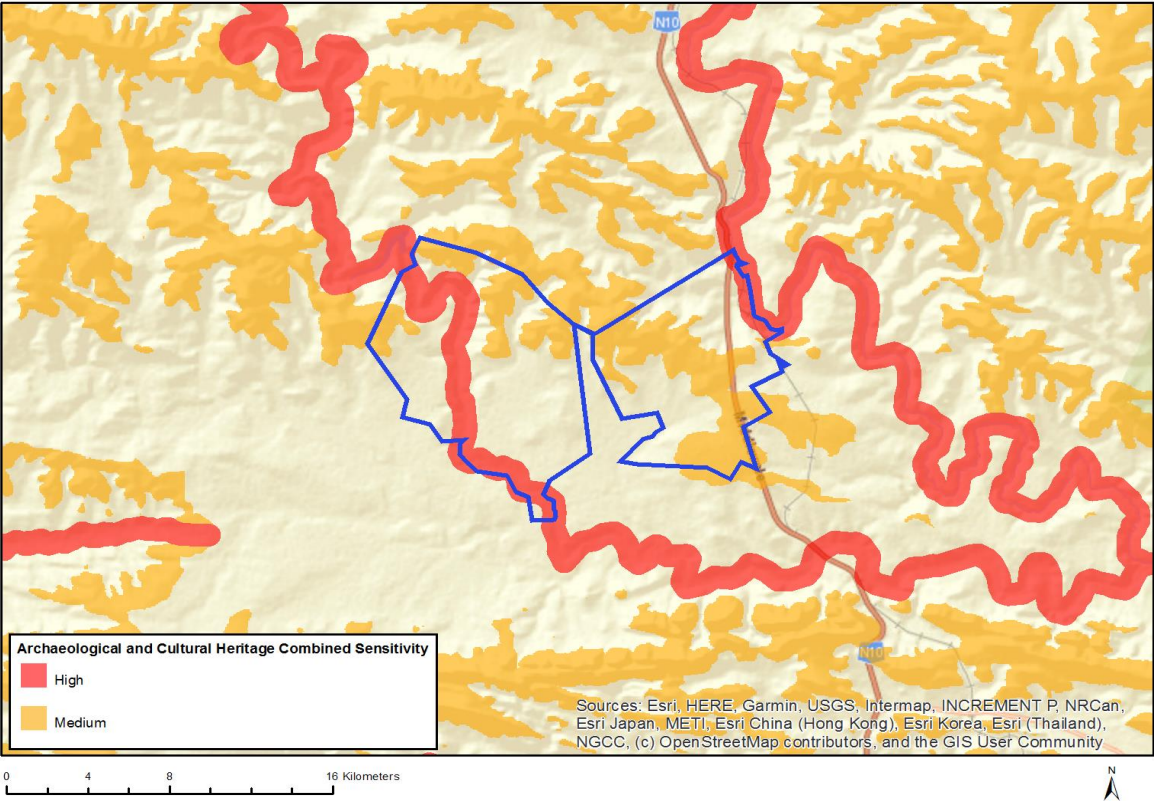


Very High sensitivity	High sensitivity	Medium sensitivity	Low sensitivity
X			

Sensitivity Features:

Sensitivity	Feature(s)
Low	Low sensitivity
Very High	Rivers
Very High	Wetlands and Estuaries

MAP OF RELATIVE ARCHAEOLOGICAL AND CULTURAL HERITAGE THEME SENSITIVITY

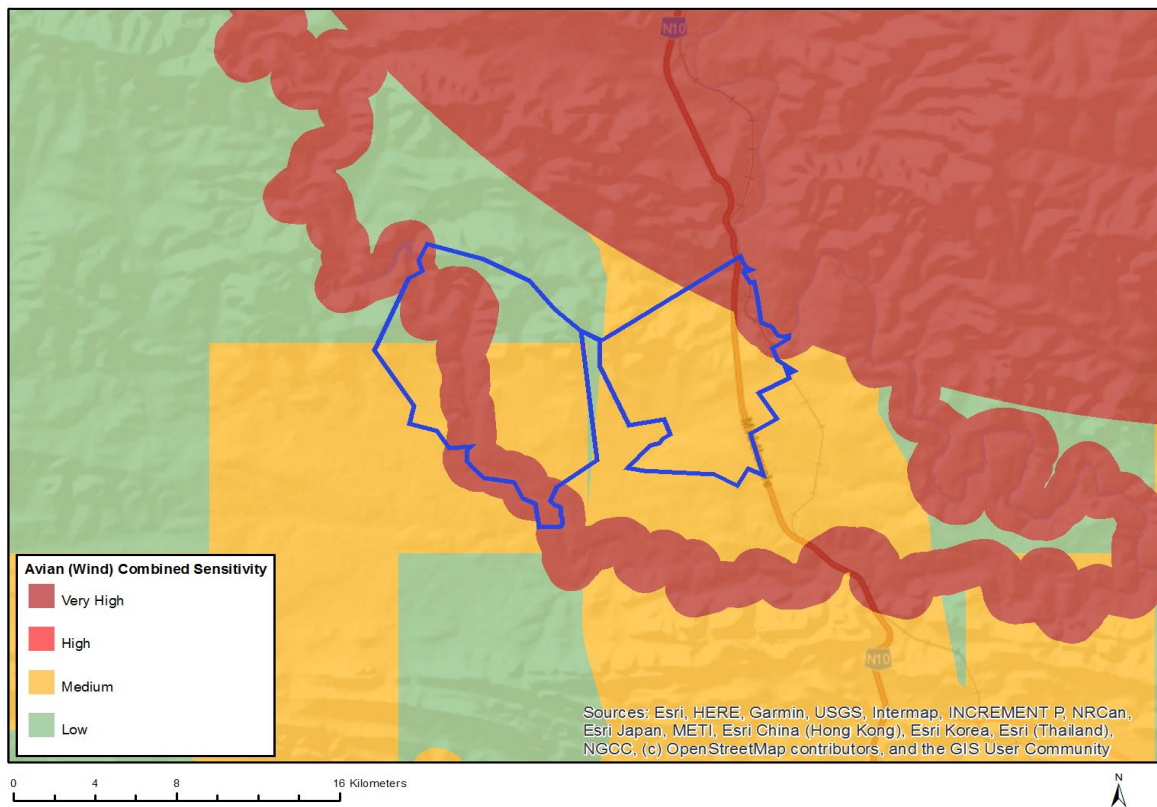


Very High sensitivity	High sensitivity	Medium sensitivity	Low sensitivity
	X		

Sensitivity Features:

Sensitivity	Feature(s)
High	Within 500 m of an important river
Medium	Mountain or ridge

MAP OF RELATIVE AVIAN (WIND) THEME SENSITIVITY

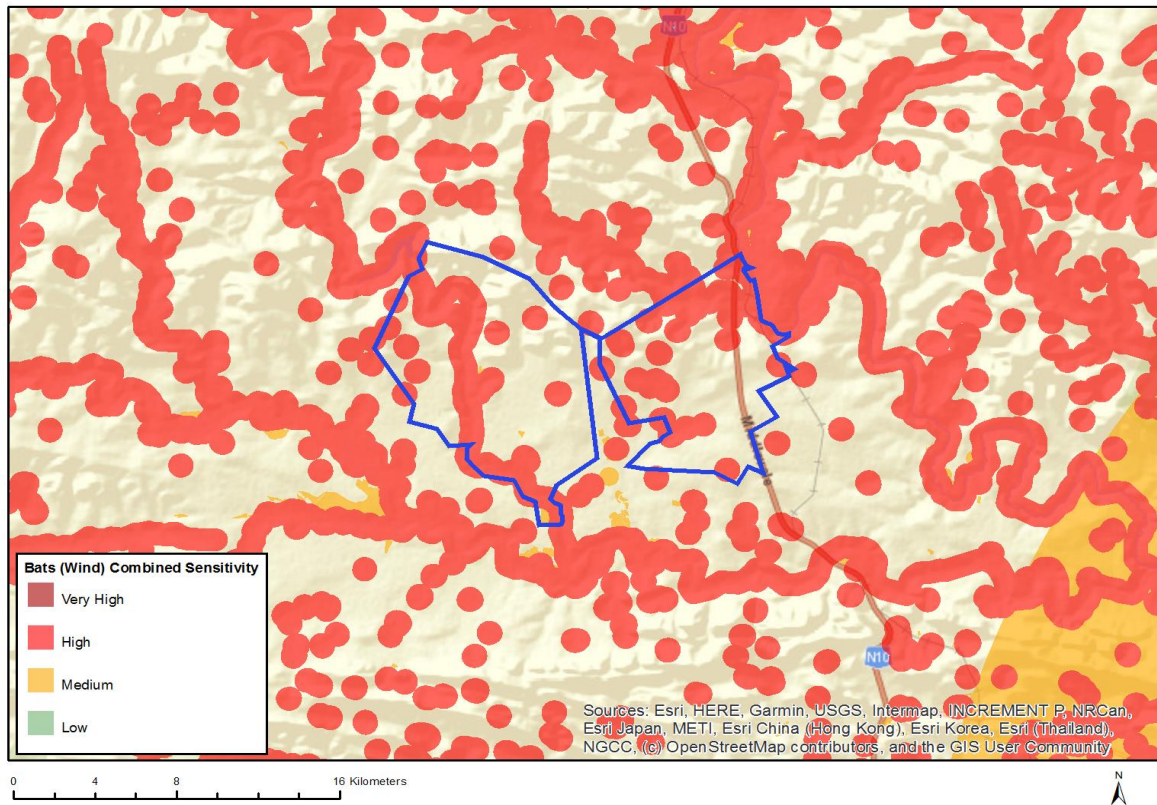


Very High sensitivity	High sensitivity	Medium sensitivity	Low sensitivity
X			

Sensitivity Features:

Sensitivity	Feature(s)
Low	Area Outside Sensitivities
Medium	within 5 km of power line \geq 132kV
Medium	areas where susceptible large terrestrial birds were found to be present
Very High	within 1 km of major river Little Fish
Very High	within 50 km of Colonies;within 5 km of power line \geq 132kV
Very High	within 1 km of major river Great Fish River;within 5 km of power line \geq 132kV
Very High	within 1 km of major river Little Fish;areas where susceptible large terrestrial birds were found to be present
Very High	within 50 km of Colonies;within 1 km of major river Great Fish River;within 5 km of power line \geq 132kV

MAP OF RELATIVE BATS (WIND) THEME SENSITIVITY

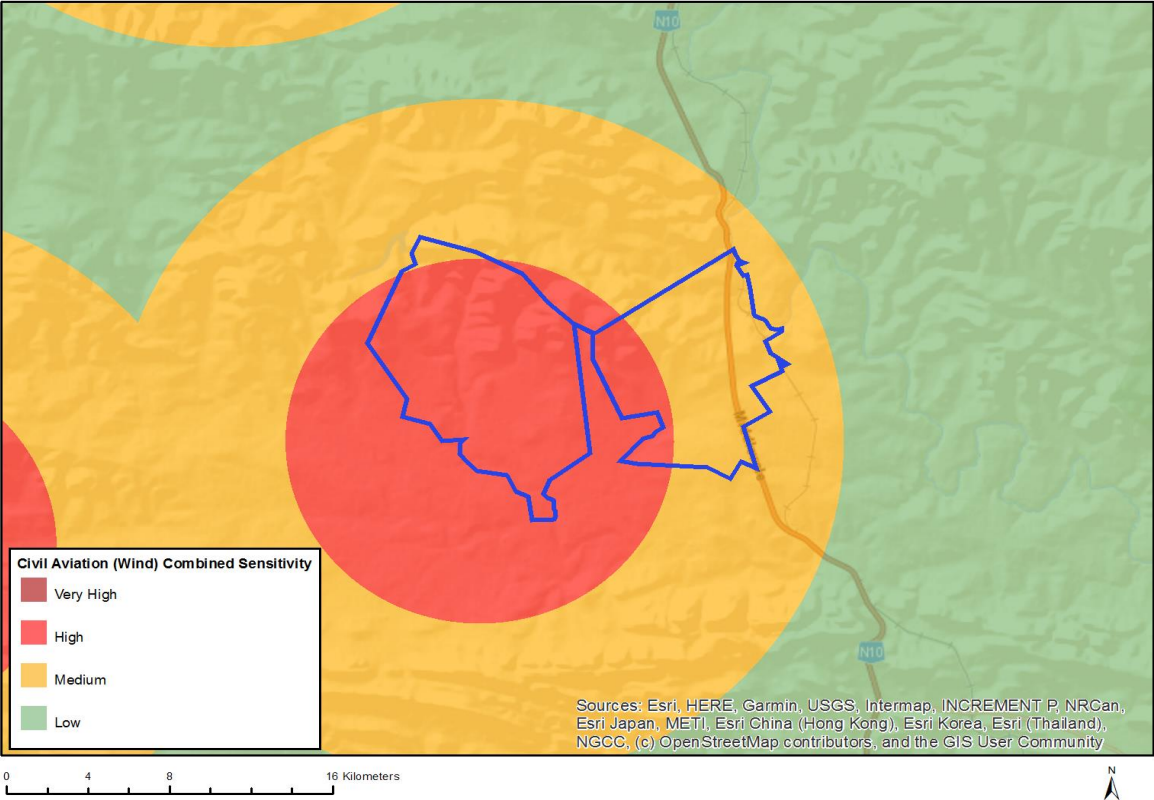


Very High sensitivity	High sensitivity	Medium sensitivity	Low sensitivity
	X		

Sensitivity Features:

Sensitivity	Feature(s)
High	Within 500 m of a river
High	Wetland
High	Within 500 m of a wetland
Medium	Croplands

MAP OF RELATIVE CIVIL AVIATION (WIND) THEME SENSITIVITY

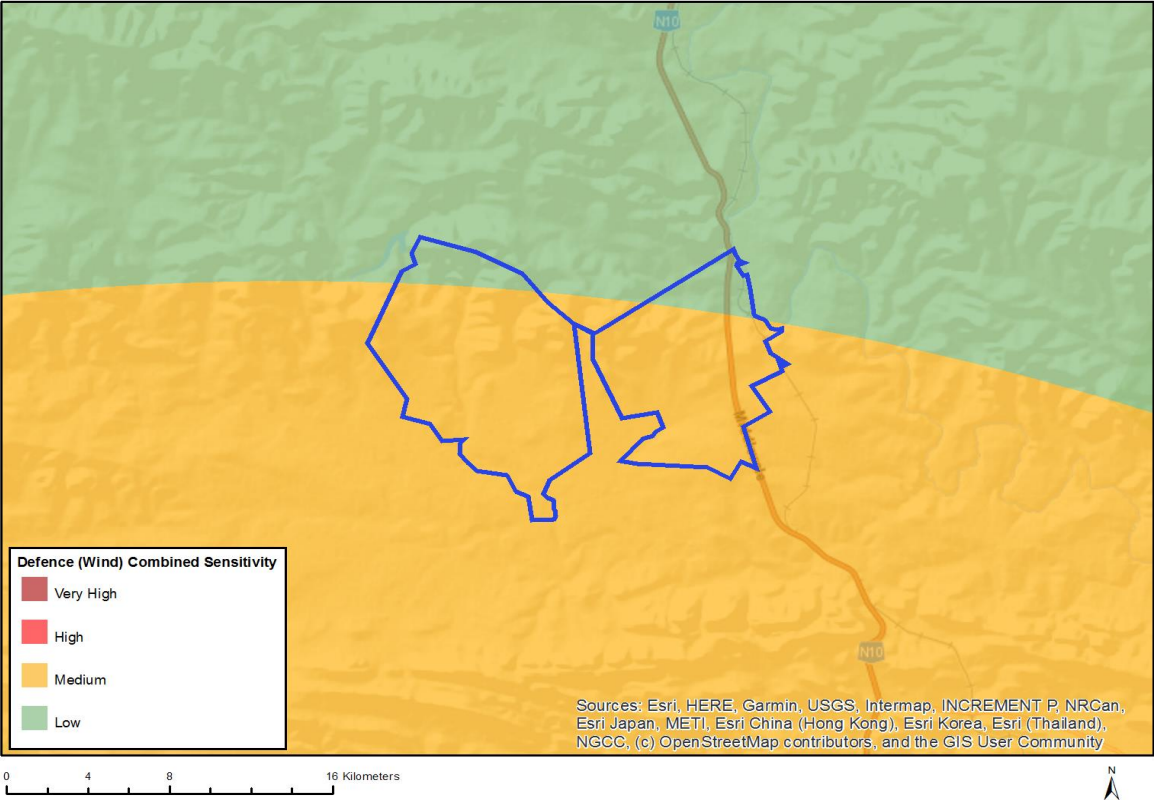


Very High sensitivity	High sensitivity	Medium sensitivity	Low sensitivity
	X		

Sensitivity Features:

Sensitivity	Feature(s)
High	Within 8 km of other civil aviation aerodrome
Medium	Between 8 and 15 km of other civil aviation aerodrome

MAP OF RELATIVE DEFENCE (WIND) THEME SENSITIVITY

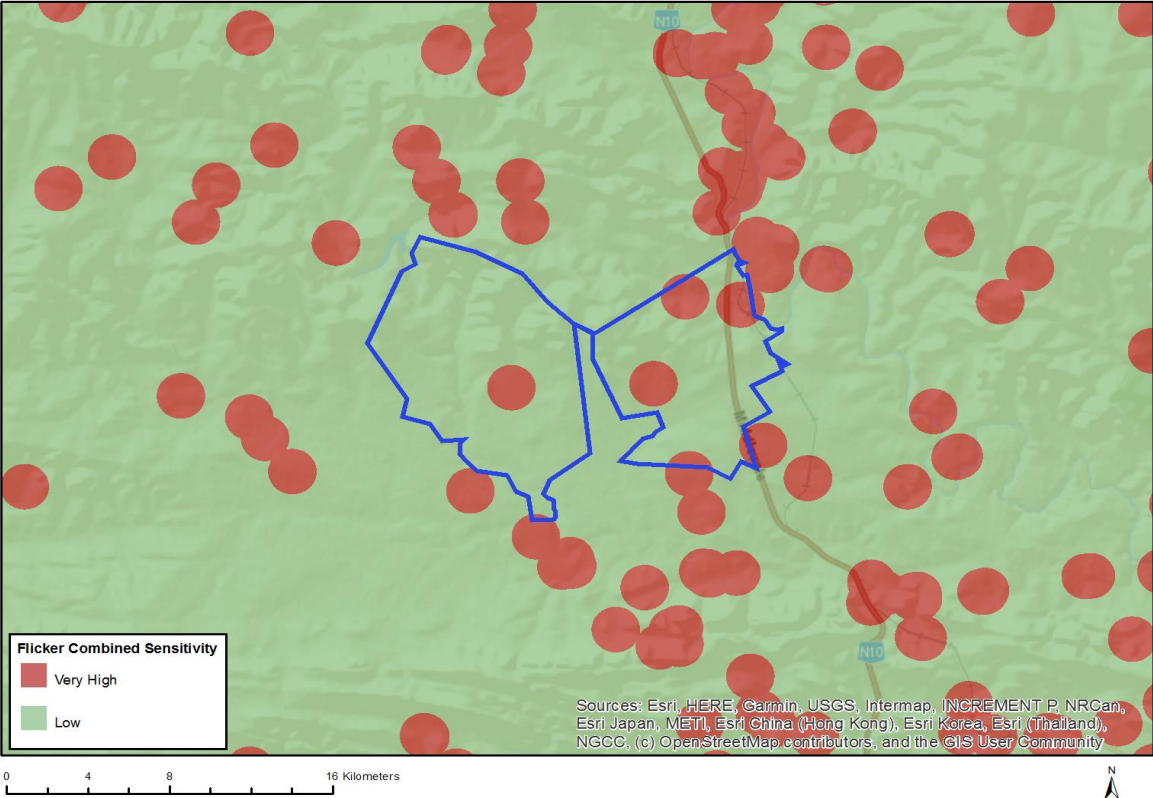


Very High sensitivity	High sensitivity	Medium sensitivity	Low sensitivity
		X	

Sensitivity Features:

Sensitivity	Feature(s)
Low	Low sensitivity
Medium	Defence Site

MAP OF RELATIVE FLICKER THEME SENSITIVITY

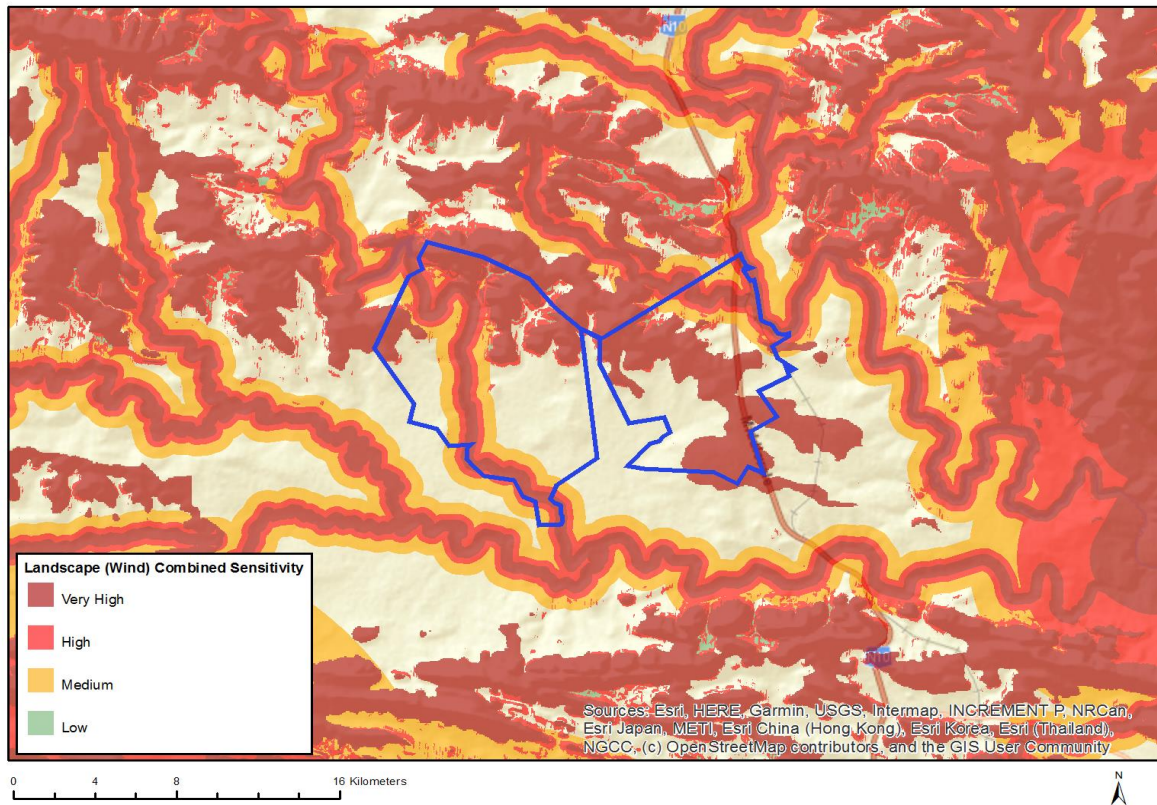


Very High sensitivity	High sensitivity	Medium sensitivity	Low sensitivity
X			

Sensitivity Features:

Sensitivity	Feature(s)
Low	Area of low sensitivity
Very High	Potential temporarily or permanently inhabited residence

MAP OF RELATIVE LANDSCAPE (WIND) THEME SENSITIVITY

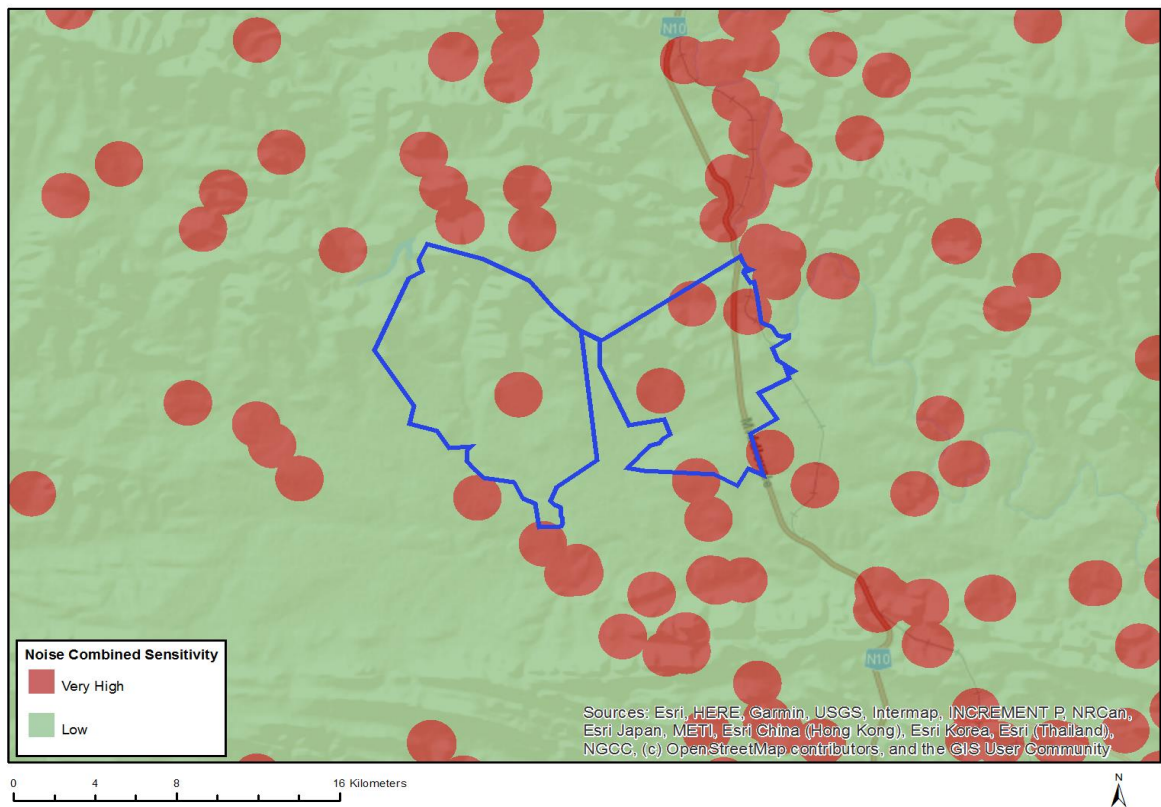


Very High sensitivity	High sensitivity	Medium sensitivity	Low sensitivity
X			

Sensitivity Features:

Sensitivity	Feature(s)
High	Slope between 1:4 and 1:10
High	Within 500 m of a river
Low	Slope less than 1:10
Medium	Within 1000 m of a wetland
Very High	Mountain tops and high ridges
Very High	Slope more than 1:4
Very High	Within 250 m of a river

MAP OF RELATIVE NOISE THEME SENSITIVITY

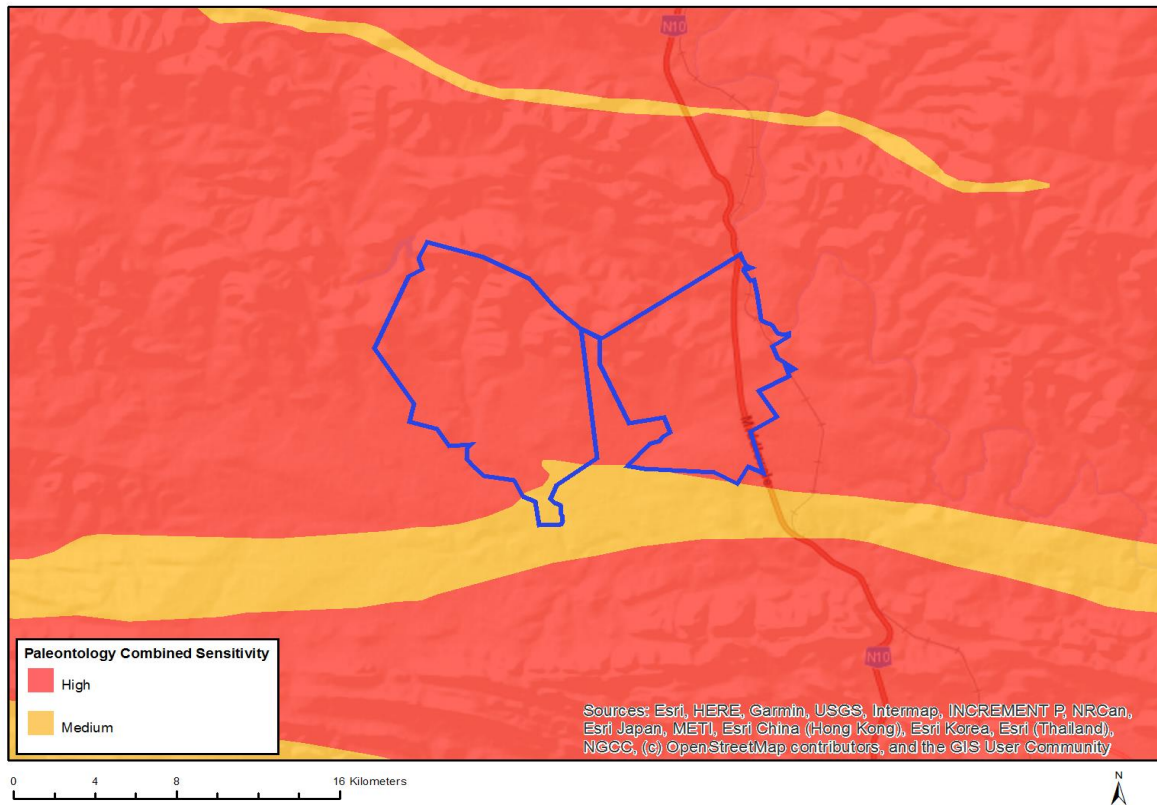


Very High sensitivity	High sensitivity	Medium sensitivity	Low sensitivity
X			

Sensitivity Features:

Sensitivity	Feature(s)
Low	Area of low sensitivity
Very High	Potential temporarily or permanently inhabited residence

MAP OF RELATIVE PALEONTOLOGY THEME SENSITIVITY

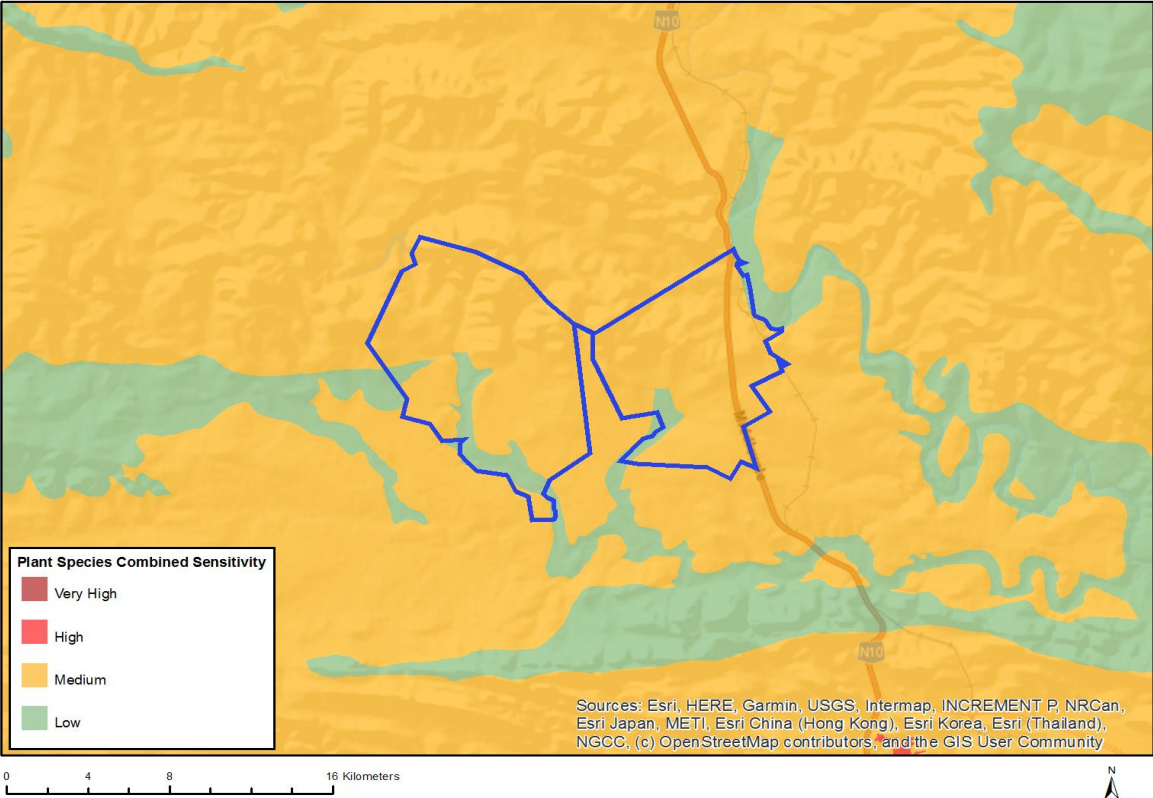


Very High sensitivity	High sensitivity	Medium sensitivity	Low sensitivity
	X		

Sensitivity Features:

Sensitivity	Feature(s)
High	Rock units with a high paleontological sensitivity
Medium	Rock units with a medium paleontological sensitivity

MAP OF RELATIVE PLANT SPECIES THEME SENSITIVITY

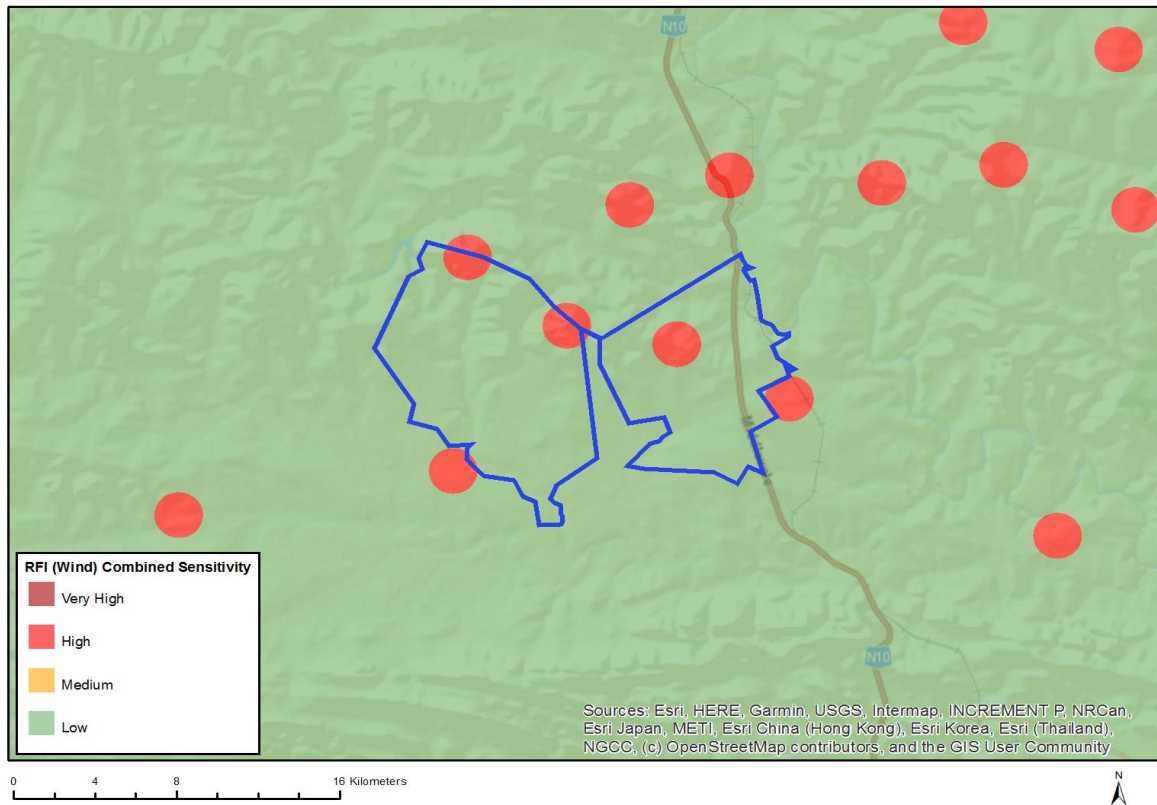


Very High sensitivity	High sensitivity	Medium sensitivity	Low sensitivity
		X	

Sensitivity Features:

Sensitivity	Feature(s)
Low	Low sensitivity
Medium	Sensitive species 275
Medium	Sensitive species 481

MAP OF RELATIVE RFI (WIND) THEME SENSITIVITY

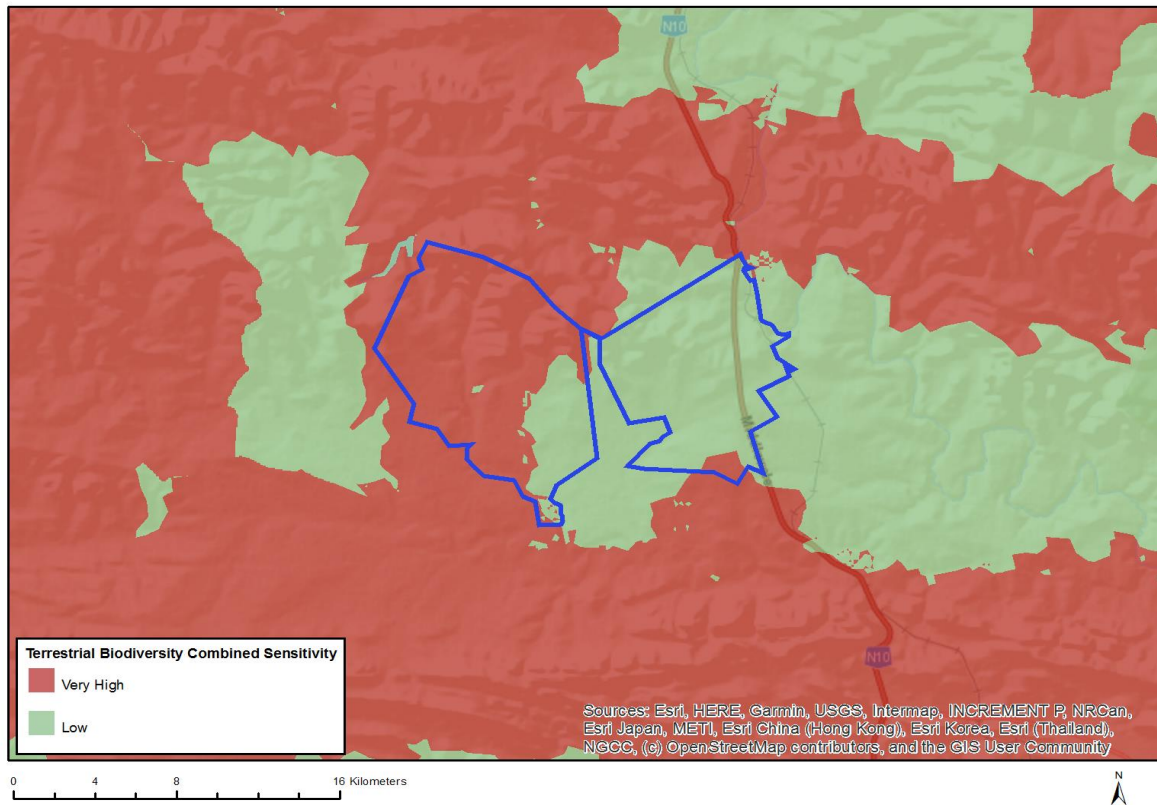


Very High sensitivity	High sensitivity	Medium sensitivity	Low sensitivity
	X		

Sensitivity Features:

Sensitivity	Feature(s)
High	Within 1 km of a telecommunication facility;None;More than 60 km from a Weather Radar installation
Low	Low sensitivity for telecommunications;None;More than 60 km from a Weather Radar installation

MAP OF RELATIVE TERRESTRIAL BIODIVERSITY THEME SENSITIVITY



Very High sensitivity	High sensitivity	Medium sensitivity	Low sensitivity
X			

Sensitivity Features:

Sensitivity	Feature(s)
Low	Low Sensitivity
Very High	Critical Biodiversity Area 2
Very High	Ecological Support Area 1
Very High	Ecological Support Area 2