





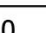
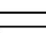
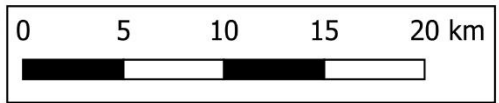


### Legend

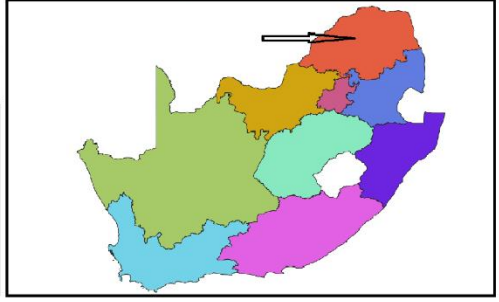
-  Prospecting area
-  SA\_Wards2020
-  22
-  LocalMunicipalities2018\_Final
-  Blouberg
-  DistrictMunicipalities2018\_Final
-  Capricorn
-  OpenStreetMap



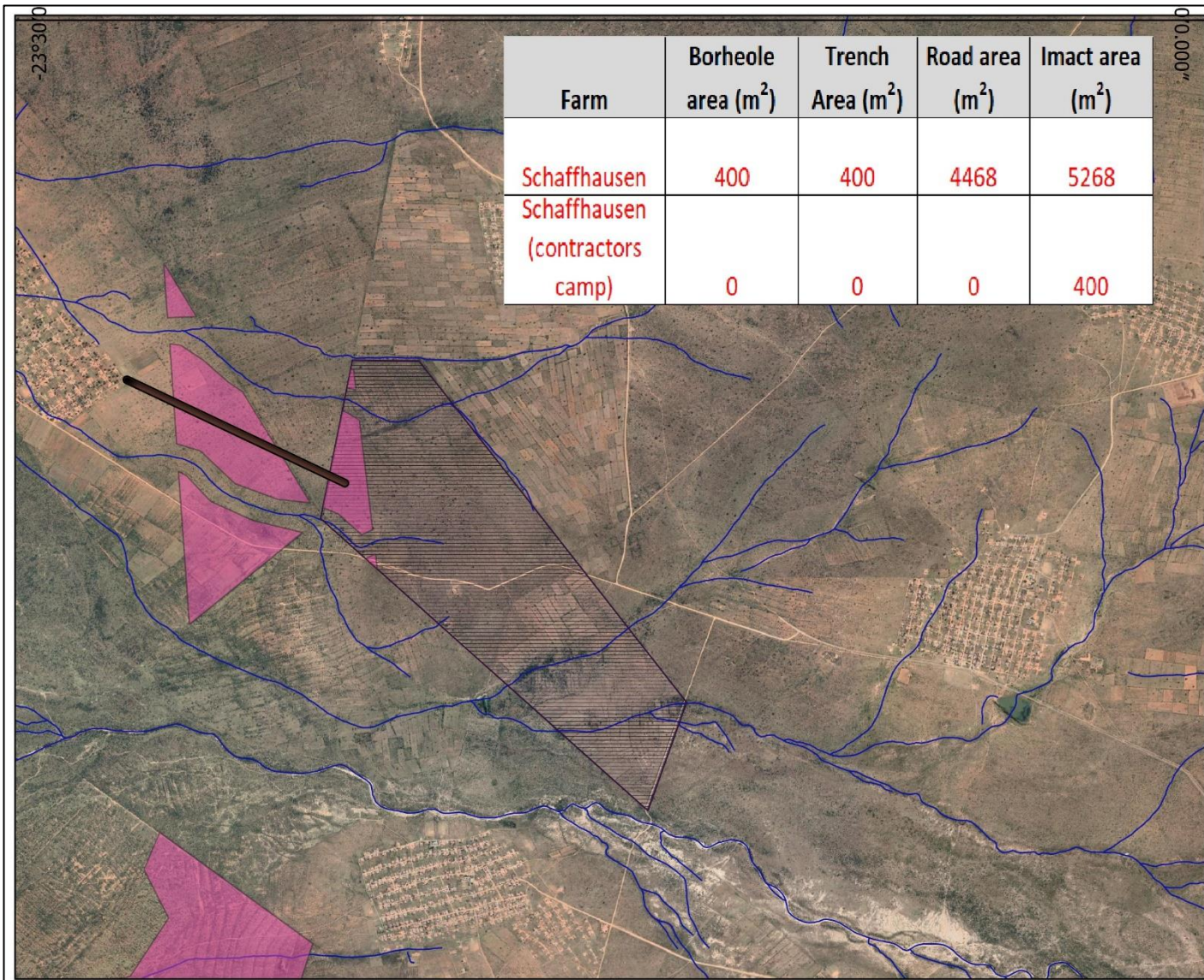
Programme: QGIS Lorem ipsum  
 Date: 26 August 2022  
 Compiled by: Dr Petro Erasmus  
 Sources: Sylvania, Municipal Demarcation Board, OpenStreetMap(TM)

**Prescali**  
 Environmental Consultants (Pty) Ltd

PO Box 2544 (t) 012 543 3808  
 Montana Park (f) 086 621 0294  
 0159 info@prescali.co.za



Sylvania Northern Mining (Pty) Ltd  
 Schaffhausen  
 Regional Location: Not smaller than 1 in 250 000



Farm	Borheole area (m <sup>2</sup> )	Trench Area (m <sup>2</sup> )	Road area (m <sup>2</sup> )	Impact area (m <sup>2</sup> )
Schaffhausen	400	400	4468	5268
Schaffhausen (contractors camp)	0	0	0	400

### Legend

Other activities

Access roads Proposed Track

— 4

Client

SNM Drilling and Trenching areas

■ 0

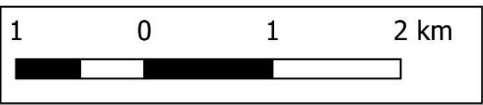
▨ Schaffhausen 689 LR pt 2

Surveyor General

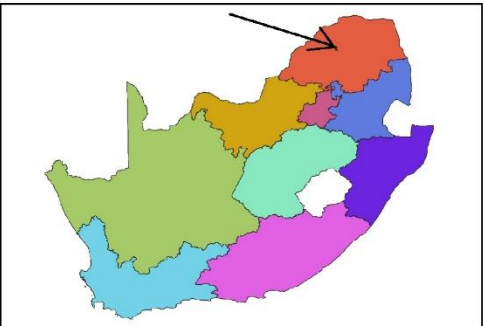
— 2328\_Hydr\_Lines\_201309

Google Earth

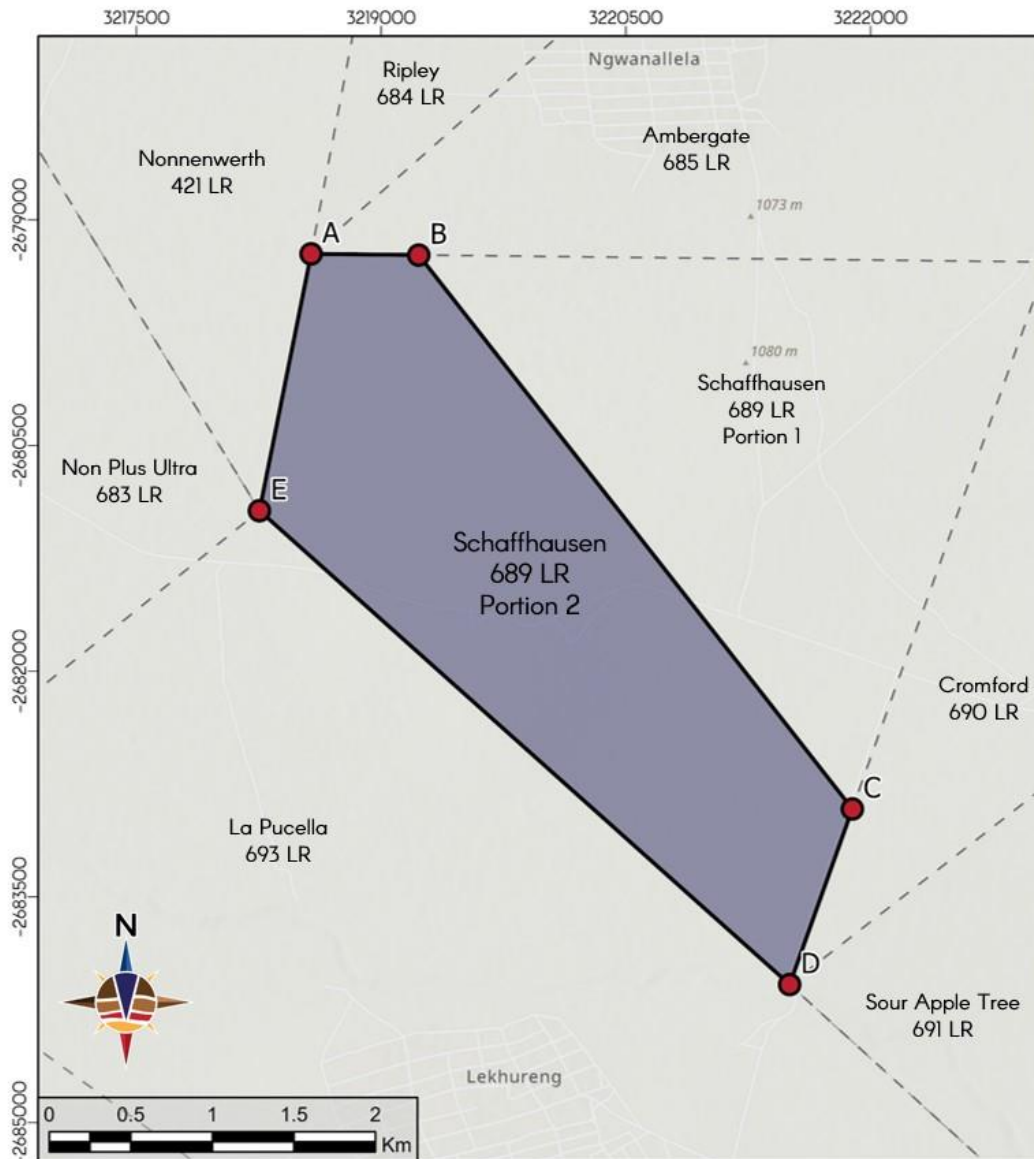
PO Box 2544 (t) 012 543 3808  
 Montana Park (f) 086 621 0294  
 0159 info@prescali.co.za



Programme: QGIS Lorem ipsum  
 Date: 6 October 2022  
 Compiled by: Dr Petro Erasmus  
 Sources: Client, Google EarthTM



Sylvania Northern Mining (Pty) Ltd  
 LP30/5/1/1 /2/14728PR - Schaffhausen  
 Priority Prospecting area and proposed access road



# Regulation 2(2) Plan

Province of Limpopo  
Magisterial District: Mokopane

**Sylvania Northern Mining (Pty) Ltd**

**PLAN CONTEMPLATED IN REGULATION 2(2) OF THE REGULATIONS UNDER THE MPRDA**

Point ID	Longitude	Latitude
A	28.9128909	-23.5302995
B	28.9188278	-23.5303721
C	28.9427031	-23.5608605
D	28.9392638	-23.5705296
E	28.9100581	-23.5444529

## Legend

- Boundary Intersections
- Farm boundary
- Surrounding farm boundaries

The figure lettered A,B,C,D,E represents farm Schaffhausen 689 LR portion 2 in extent approximately 716.01 hectares.

The total area applied for mining rights is approximately 716.01 hectares and is situated in the local municipality of Blouberg, magisterial district of Mokopane, Limpopo Province.

COMPETENT PERSON: GP DU PLESSIS  
Signed  
Date: 16 August 2022

## Map

Topographic Map



Datum: WGS 84

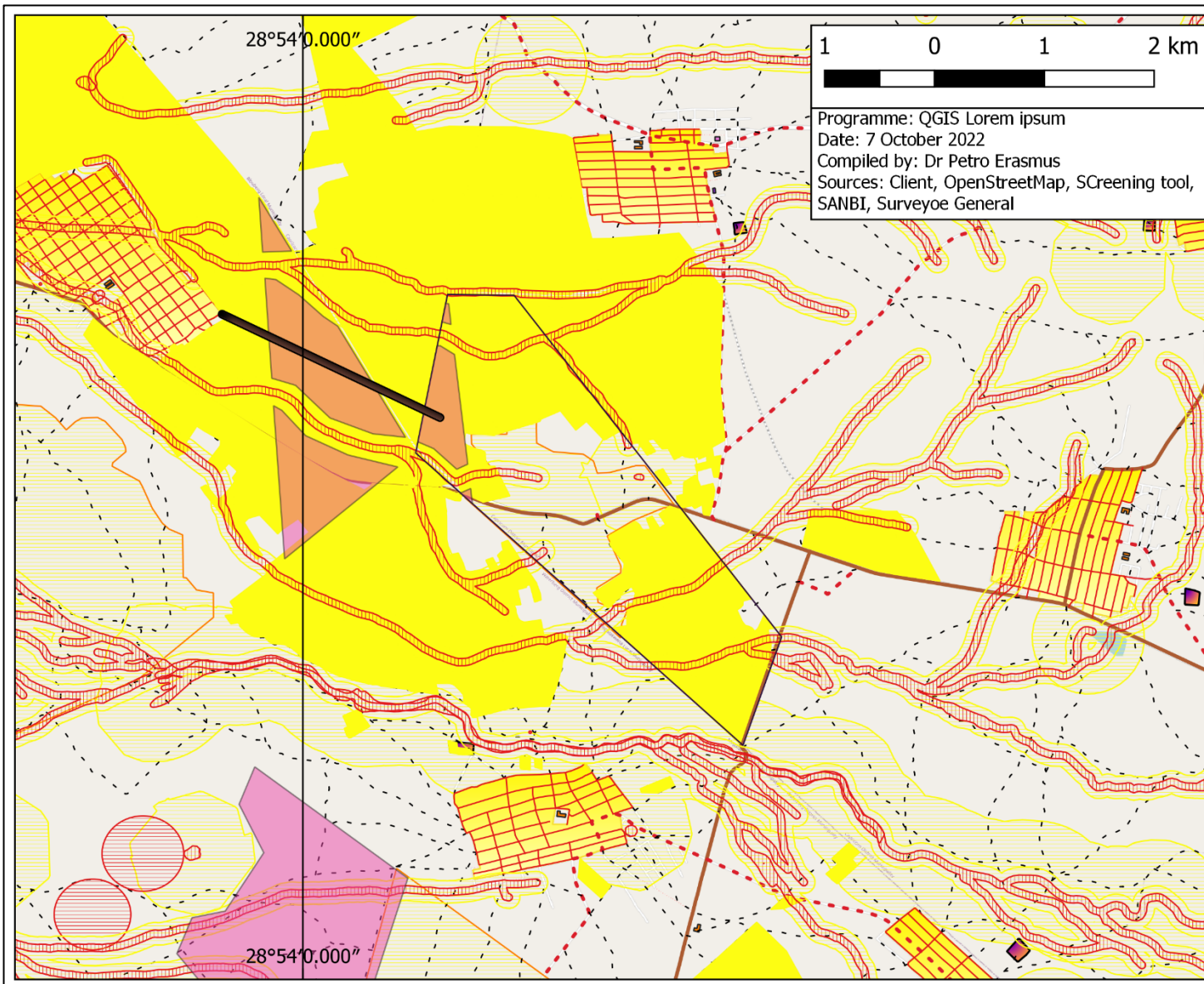
Date Created: 16 August 2022

Created by: Brad Frazer

Scale: 1 to 30 000

Prepared by





1 0 1 2 km

Programme: QGIS Lorem ipsum  
 Date: 7 October 2022  
 Compiled by: Dr Petro Erasmus  
 Sources: Client, OpenStreetMap, SScreening tool,  
 SANBI, Surveyoe General

- ### Legend
- Other activities**  
 Acces roads Proposed Track  
 4
- Client**  
 Heritage sites  
 ♦ High Significance
- SNM Drilling and Trenching areas**  
 0  
 Schaffhausen 689 LR ptn 2
- Screening Tool**  
 10m buffer wetlands  
 32m Buffer Watercourse  
 100m buffer watercourses
- farmingFieldCropBoundarySens**  
 High  
 Very High
- Surveyor General**  
 2328\_TRAN\_ROADS\_2013  
 Footpath  
 Other Road  
 Secondary Road  
 Street
- 2328\_EDUCATIONAL\_2013**  
 School
- 2328\_PUBLIC\_2013**  
 Cemetery  
 Clinic  
 Retail Outlet
- 2328\_LCLU\_LANDUSE\_2014**  
 Residential Landuse
- SANBI**  
 CBA - PRA  
 CBA  
 500m buffer wetlands
- OpenStreetMap



Sylvania Northern Mining (Pty) Ltd  
 LP30/5/1/1 /2/14728PR - Schaffhausen  
 Final Site Location, Environmental and Land Use map

**Prescali**  
 Environmental Consultants (Pty) Ltd

PO Box 2544 (t) 012 543 3808  
 Montana Park (f) 086 621 0294  
 0159 info@prescali.co.za

