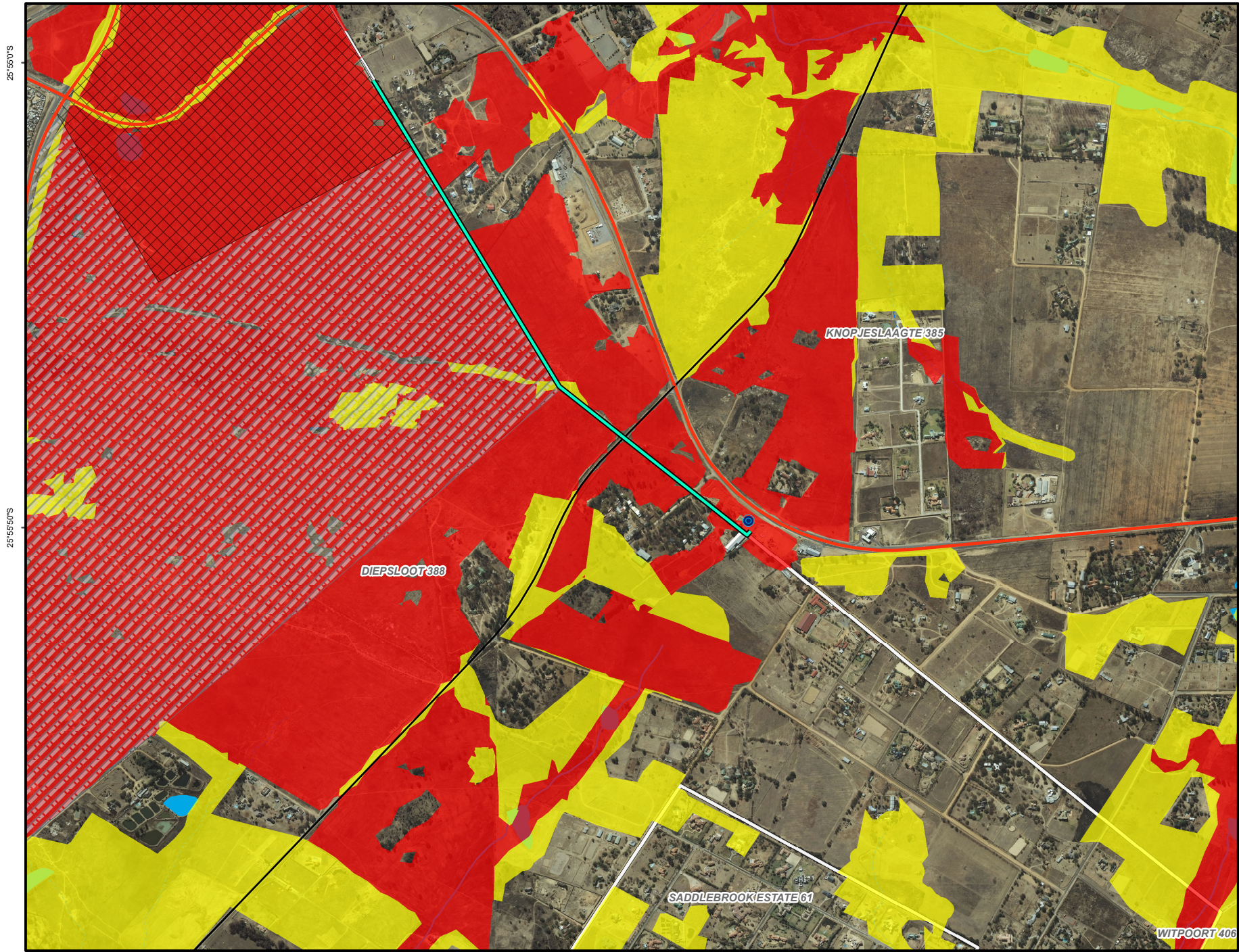


Tanganani Bulk Water Supply: Sensitive Areas



25°55'0"S

25°55'50"S

28°1'40"E

28°2'30"E

28°3'20"E

Legend

- Reservoir Tower
- Rivers**
 - Perennial river
 - - - Non-perennial river
- Roads**
 - National Road
 - Main Road
 - Secondary Road
 - Proposed Pipeline
- Proposed Developments**
 - Tanganani Ext 14
 - Tanganani Ext 7
- Gauteng Conservation Plan**
 - Critical Biodiversity Areas
 - Ecological Supported Areas
 - Parent Farms
- Inland Water Courses**
 - Dams
 - Lake



Project: Tanganani Bulk Infrastructure Project |
 Client: Gauteng Department of Human Settlement |
 Drawn By: NK Ndala |
 Date: 29 June 2017 |
 Ref: BLKD_002_Tanganani_Ext7 |
 DataSource: NGI Aerial Imagery, Gauteng
 Department of Agriculture and Rural Development,
 Gauteng C-Plan 3.3 Terrestrial CBAs and EASs 2011 |
 Projection: Geographic |
 Datum: WGS84 |
 © 2017 Kongiwe Environmental (Pty) Ltd.
www.kongiwe.co.za

WITPOORT 406