

**SCREENING REPORT FOR AN ENVIRONMENTAL AUTHORIZATION OR
FOR A PART TWO AMENDMENT OF AN ENVIRONMENTAL AUTHORISATION
AS REQUIRED BY THE 2014 EIA REGULATIONS – PROPOSED SITE
ENVIRONMENTAL SENSITIVITY**

EIA Reference number: N/A

Project name: Turksvy Dam and Agricultural Development

Project title: Turksvy

Date screening report generated: 06/01/2021 12:01:46

Applicant: Turksvy Foto's Kunste en Rame BK

Compiler: EnviroAfrica

Compiler signature:

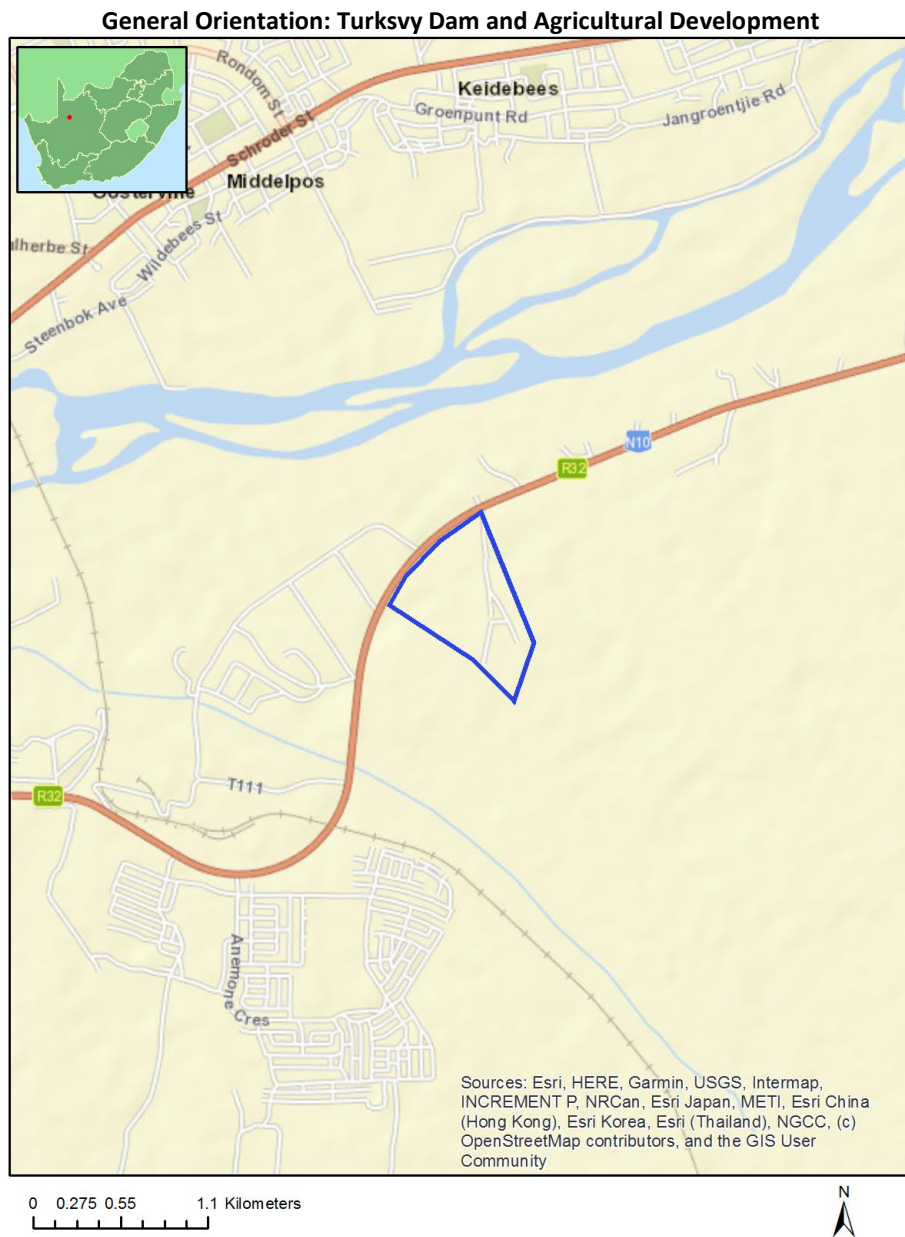
.....

Table of Contents

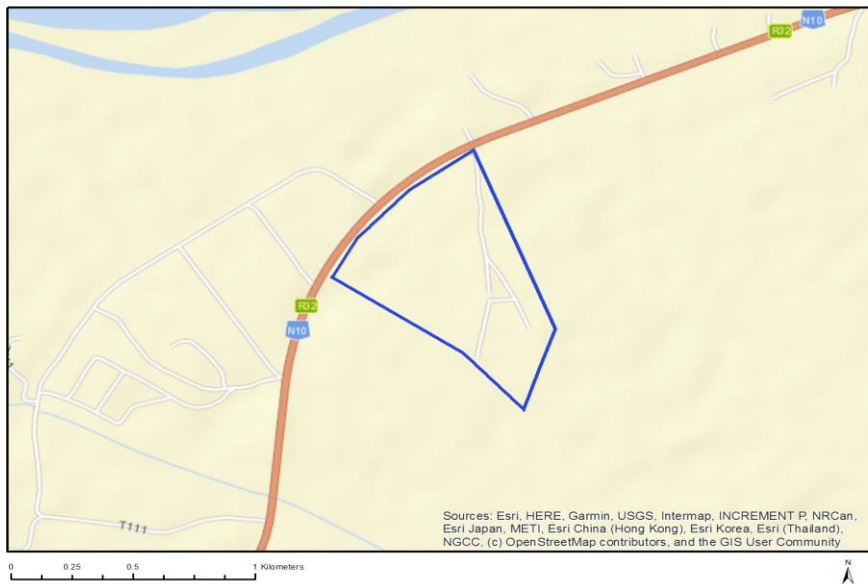
- Proposed Project Location 3
 - Orientation map 1: General location 3
- Map of proposed site and relevant area(s) 4
 - Cadastral details of the proposed site 4
 - Wind and Solar developments with an approved Environmental Authorisation or applications under consideration within 30 km of the proposed area 4
 - Environmental Management Frameworks relevant to the application 5
- Environmental screening results and assessment outcomes 6
 - Relevant development incentives, restrictions, exclusions or prohibitions 6
- Map indicating proposed development footprint within applicable development incentive, restriction, exclusion or prohibition zones 7
 - Proposed Development Area Environmental Sensitivity 7
 - Specialist assessments identified 8
- Results of the environmental sensitivity of the proposed area 10
 - MAP OF RELATIVE AGRICULTURE THEME SENSITIVITY 10
 - MAP OF RELATIVE ANIMAL SPECIES THEME SENSITIVITY 11
 - MAP OF RELATIVE AQUATIC BIODIVERSITY THEME SENSITIVITY 12
 - MAP OF RELATIVE CIVIL AVIATION THEME SENSITIVITY 13
 - MAP OF RELATIVE DEFENCE THEME SENSITIVITY 14
 - MAP OF RELATIVE PALEONTOLOGY THEME SENSITIVITY 15
 - MAP OF RELATIVE PLANT SPECIES THEME SENSITIVITY 16
 - MAP OF RELATIVE TERRESTRIAL BIODIVERSITY THEME SENSITIVITY 17

Proposed Project Location

Orientation map 1: General location



Map of proposed site and relevant area(s)



Cadastral details of the proposed site

Property details:

No	Farm Name	Farm/ Erf No	Portion	Latitude	Longitude	Property Type
1	OLYVENHOUTS DRIFT SETTLEMENT (Kenhardt)	1074	0	28°27'49.76S	21°17'7.3E	Erven
2	OLYVENHOUTS DRIFT SETTLEMENT (Kenhardt)	1076	0	28°30'7.36S	21°18'59.57E	Erven

Development footprint¹ vertices:
No development footprint(s) specified.

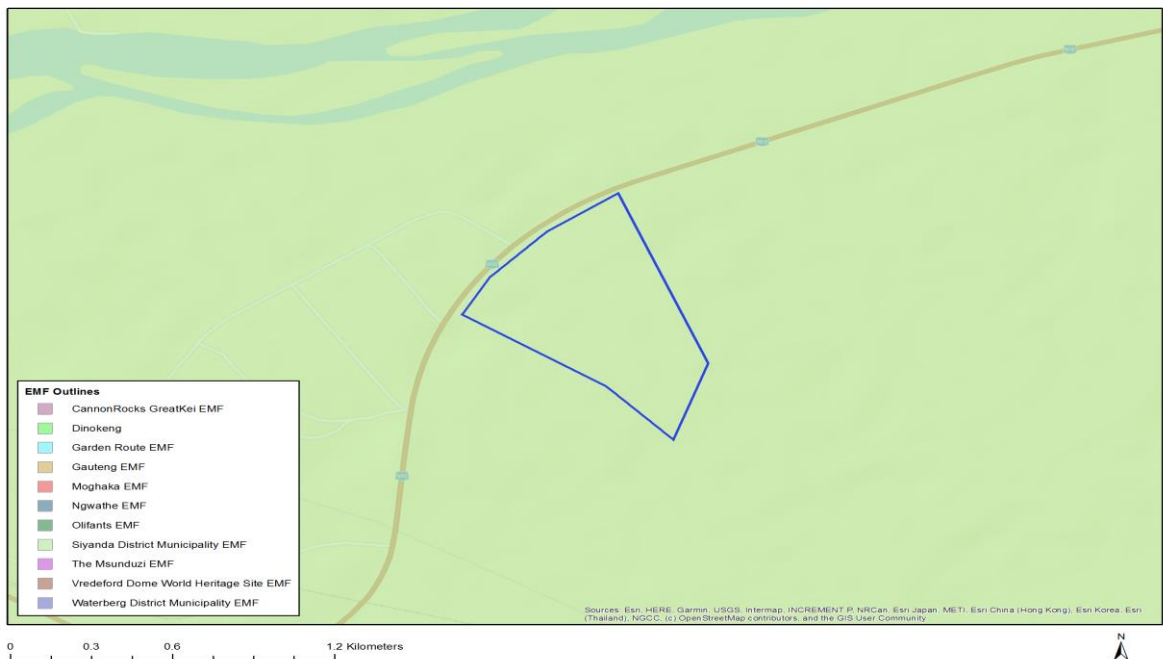
Wind and Solar developments with an approved Environmental Authorisation or applications under consideration within 30 km of the proposed area

No	EIA Reference No	Classification	Status of application	Distance from proposed area (km)
1	14/12/16/3/3/2/657	Solar CSP	Approved	22.8
2	14/12/16/3/3/2/290	Solar PV	Approved	16.1
3	12/12/20/1831/2	Solar CSP	Approved	22.8
4	12/12/20/1831/1	Solar CSP	Approved	22.8
5	12/12/20/2169	Solar PV	Approved	9

¹ “development footprint”, means the area within the site on which the development will take place and includes all ancillary developments for example roads, power lines, boundary walls, paving etc. which require vegetation clearance or which will be disturbed and for which the application has been submitted.

6	14/12/16/3/3/2/297	Solar CSP	Approved	16.1
7	14/12/16/3/3/2/291	Solar PV	Approved	16.1
8	14/12/16/3/3/2/292	Solar PV	Approved	16.1
9	12/12/20/2056	Solar CSP	Approved	12.5
10	14/12/16/3/3/3/82	Solar CSP	Approved	27.8
11	14/12/16/3/3/2/293	Solar CSP	Approved	20.1
12	14/12/16/3/3/2/656	Solar CSP	Approved	22.8
13	14/12/16/3/3/2/298	Solar CSP	Approved	16.1
14	14/12/16/3/3/2/289	Solar PV	Approved	16.1
15	12/12/20/1831	Solar CSP	Approved	22.8
16	14/12/16/3/3/2/816	Solar PV	Approved	29.5
17	14/12/16/3/3/2/821	Solar PV	Approved	0.4
18	12/12/20/2146	Solar PV	Approved	4.8
19	12/12/20/777	Solar CSP	Approved	18.7
20	14/12/16/3/3/2/294	Solar CSP	Approved	25.3
21	14/12/16/3/3/2/296	Solar CSP	Approved	16.1
22	12/12/20/1831/3	Solar PV	Approved	22.8

Environmental Management Frameworks relevant to the application



Environmental Management Framework	LINK
Siyanda District Municipality EMF	https://screening.environment.gov.za/ScreeningDownloads/EMF/SIYANDA_EMF_REPORT_2008.doc

Environmental screening results and assessment outcomes

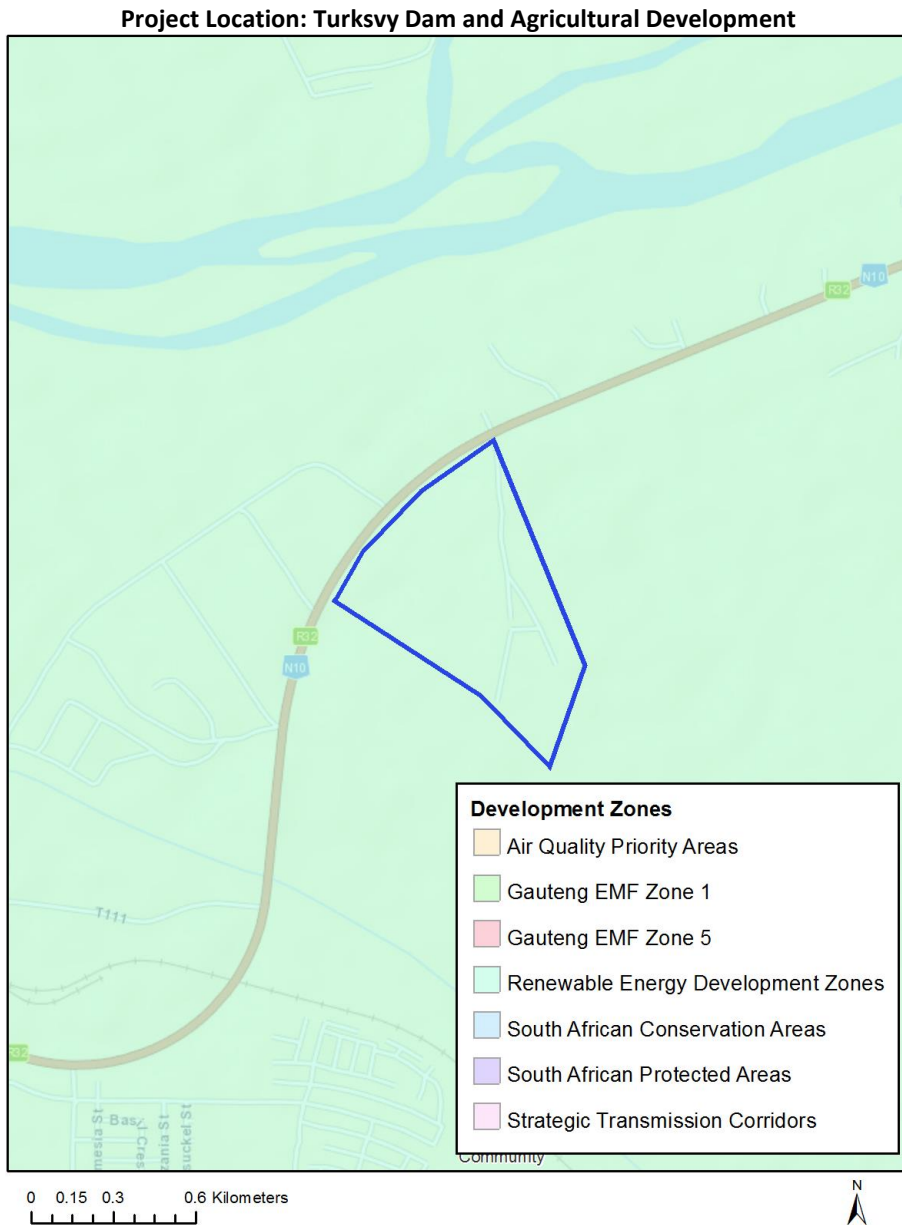
The following sections contain a summary of any development incentives, restrictions, exclusions or prohibitions that apply to the proposed development site as well as the most environmental sensitive features on the site based on the site sensitivity screening results for the application classification that was selected. The application classification selected for this report is: Agriculture_Forestry_Fisheries|Crop Production|Fisheries - Crop Production.

Relevant development incentives, restrictions, exclusions or prohibitions

The following development incentives, restrictions, exclusions or prohibitions and their implications that apply to this site are indicated below.

Incentive, restriction or prohibition	Implication
Strategic Transmission Corridor-Northern corridor	https://screening.environment.gov.za/ScreeningDownloads/DevelopmentZones/GN11316February2018.pdf
Renewable energy development zones 7-Upington	https://screening.environment.gov.za/ScreeningDownloads/DevelopmentZones/GN114of16February2018.pdf

Map indicating proposed development footprint within applicable development incentive, restriction, exclusion or prohibition zones



Proposed Development Area Environmental Sensitivity

The following summary of the development site environmental sensitivities is identified. Only the highest environmental sensitivity is indicated. The footprint environmental sensitivities for the proposed development footprint as identified, are indicative only and must be verified on site by a suitably qualified person before the specialist assessments identified below can be confirmed.

Theme	Very High sensitivity	High sensitivity	Medium sensitivity	Low sensitivity
Agriculture Theme				X
Animal Species Theme			X	

Aquatic Biodiversity Theme				X
Civil Aviation Theme		X		
Defence Theme			X	
Paleontology Theme			X	
Plant Species Theme				X
Terrestrial Biodiversity Theme	X			

Specialist assessments identified

Based on the selected classification, and the environmental sensitivities of the proposed development footprint, the following list of specialist assessments have been identified for inclusion in the assessment report. It is the responsibility of the EAP to confirm this list and to motivate in the assessment report, the reason for not including any of the identified specialist study including the provision of photographic evidence of the site situation.

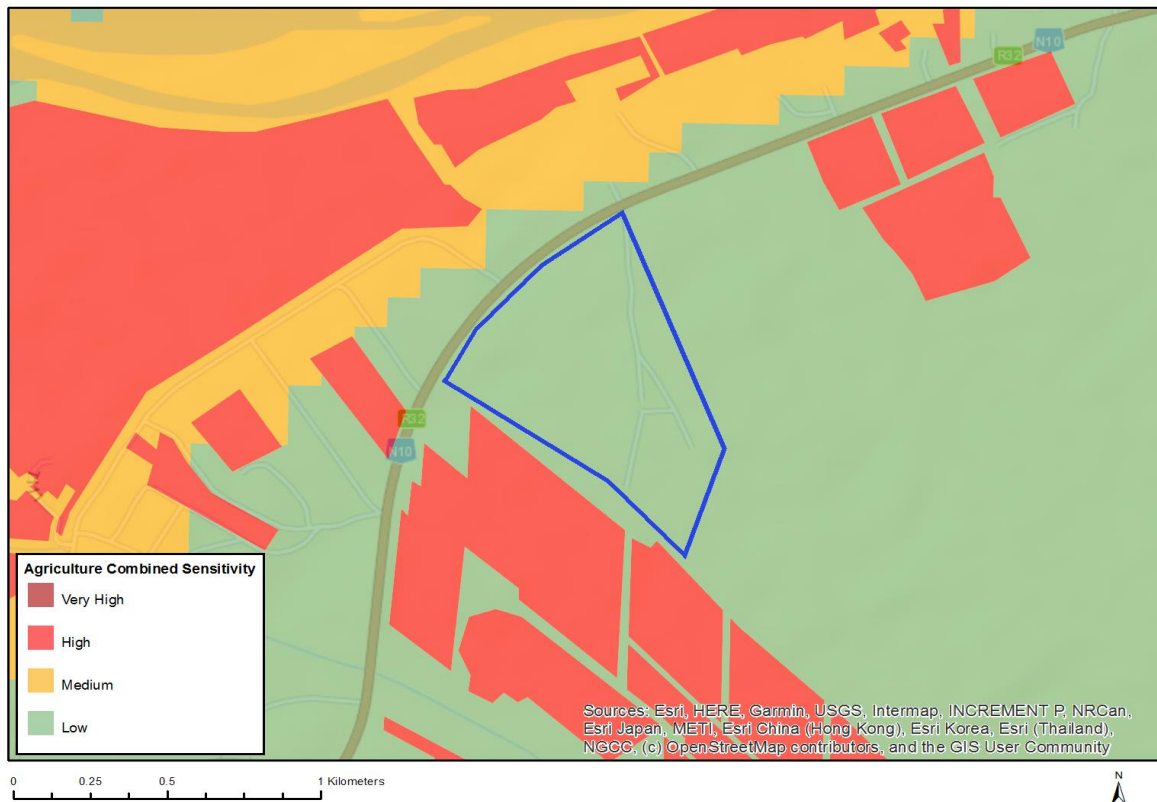
N o	Specialist assessment	Assessment Protocol
1	Agricultural Impact Assessment	https://screening.environment.gov.za/ScreeningDownloads/AssessmentProtocols/Gazetted_General_Agriculture_Assessment_Protocols.pdf
2	Landscape/Visual Impact Assessment	https://screening.environment.gov.za/ScreeningDownloads/AssessmentProtocols/Gazetted_General_Requirement_Assessment_Protocols.pdf
3	Archaeological and Cultural Heritage Impact Assessment	https://screening.environment.gov.za/ScreeningDownloads/AssessmentProtocols/Gazetted_General_Requirement_Assessment_Protocols.pdf
4	Palaeontology Impact Assessment	https://screening.environment.gov.za/ScreeningDownloads/AssessmentProtocols/Gazetted_General_Requirement_Assessment_Protocols.pdf
5	Terrestrial Biodiversity Impact Assessment	https://screening.environment.gov.za/ScreeningDownloads/AssessmentProtocols/Gazetted_Terrestrial_Biodiversity_Assessment_Protocols.pdf
6	Aquatic Biodiversity Impact Assessment	https://screening.environment.gov.za/ScreeningDownloads/AssessmentProtocols/Gazetted_Aquatic_Biodiversity_Assessment_Protocols.pdf
7	Hydrology	https://screening.environment.gov.za/ScreeningDownloads/AssessmentProtocols

	Assessment	/Gazetted General Requirement Assessment Protocols.pdf
8	Socio-Economic Assessment	https://screening.environment.gov.za/ScreeningDownloads/AssessmentProtocols/Gazetted General Requirement Assessment Protocols.pdf
9	Plant Species Assessment	https://screening.environment.gov.za/ScreeningDownloads/AssessmentProtocols/Gazetted Plant Species Assessment Protocols.pdf
10	Animal Species Assessment	https://screening.environment.gov.za/ScreeningDownloads/AssessmentProtocols/Gazetted Animal Species Assessment Protocols.pdf

Results of the environmental sensitivity of the proposed area.

The following section represents the results of the screening for environmental sensitivity of the proposed site for relevant environmental themes associated with the project classification. It is the duty of the EAP to ensure that the environmental themes provided by the screening tool are comprehensive and complete for the project. Refer to the disclaimer.

MAP OF RELATIVE AGRICULTURE THEME SENSITIVITY

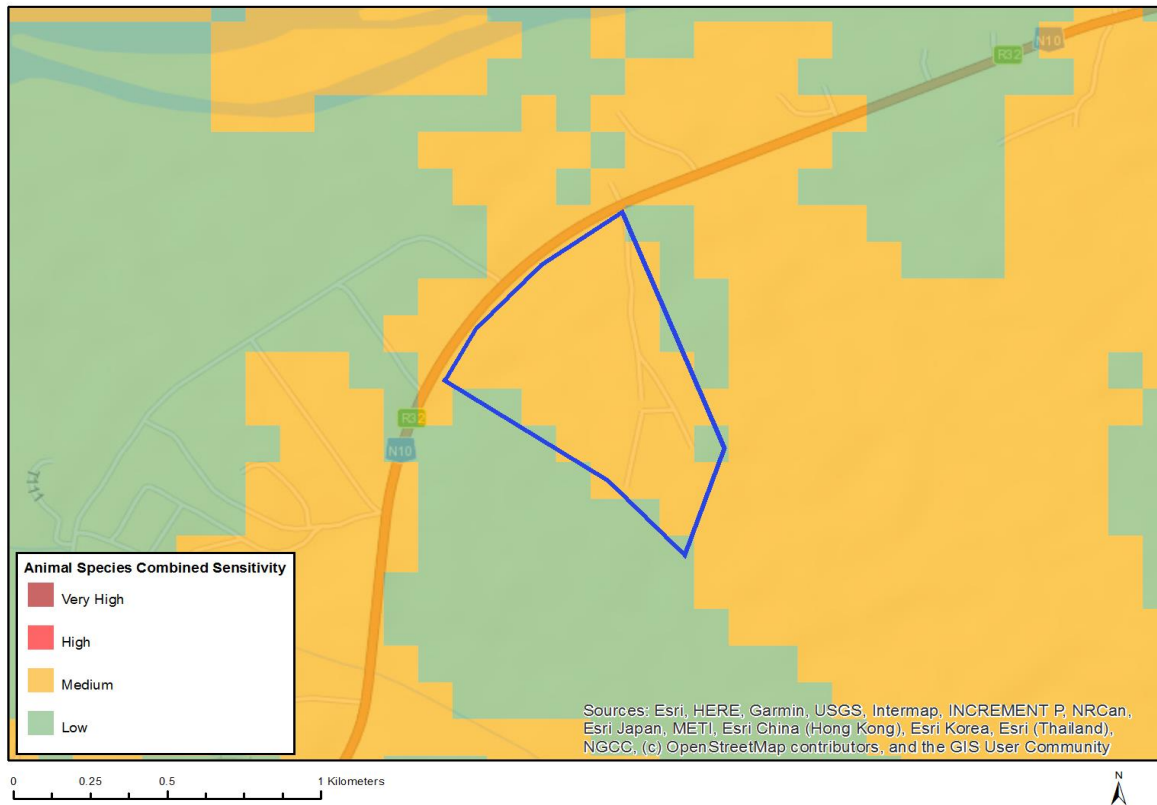


Very High sensitivity	High sensitivity	Medium sensitivity	Low sensitivity
			X

Sensitivity Features:

Sensitivity	Feature(s)
Low	Land capability;01. Very low/02. Very low/03. Low-Very low/04. Low-Very low/05. Low

MAP OF RELATIVE ANIMAL SPECIES THEME SENSITIVITY

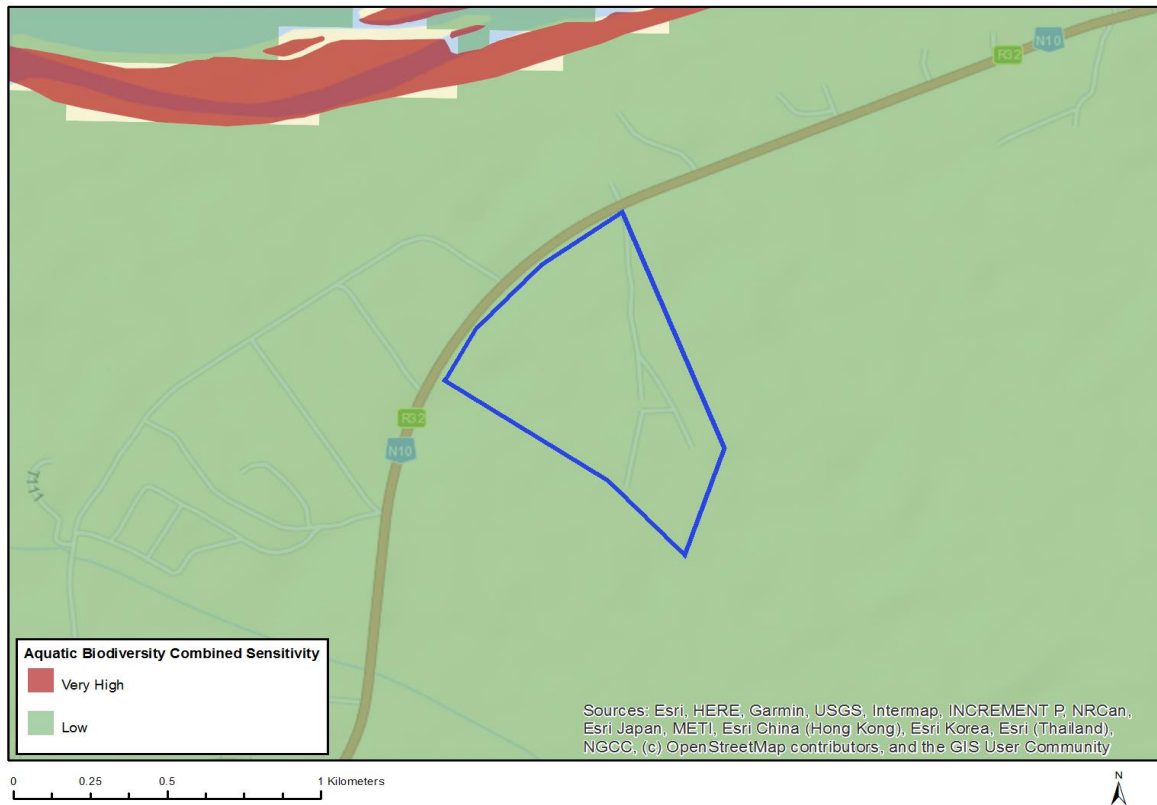


Very High sensitivity	High sensitivity	Medium sensitivity	Low sensitivity
		X	

Sensitivity Features:

Sensitivity	Feature(s)
Low	Low sensitivity
Medium	Aves-Neotis ludwigii

MAP OF RELATIVE AQUATIC BIODIVERSITY THEME SENSITIVITY

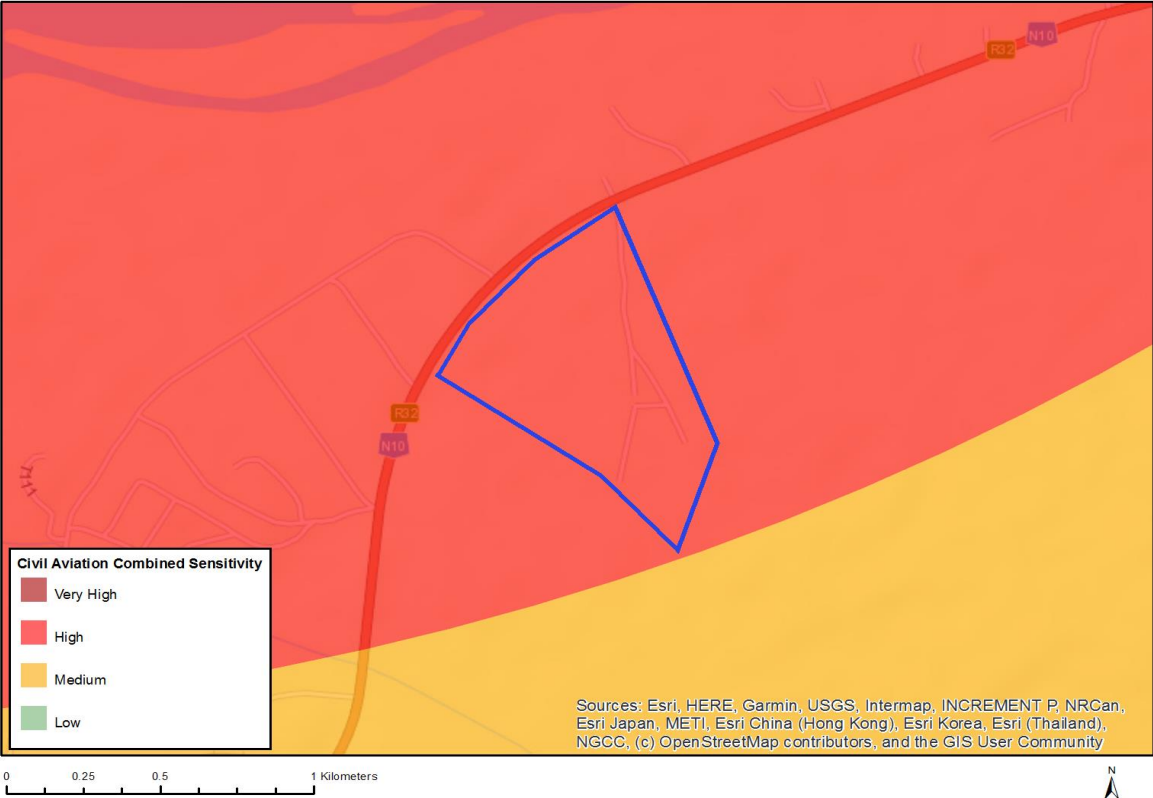


Very High sensitivity	High sensitivity	Medium sensitivity	Low sensitivity
			X

Sensitivity Features:

Sensitivity	Feature(s)
Low	Low sensitivity

MAP OF RELATIVE CIVIL AVIATION THEME SENSITIVITY

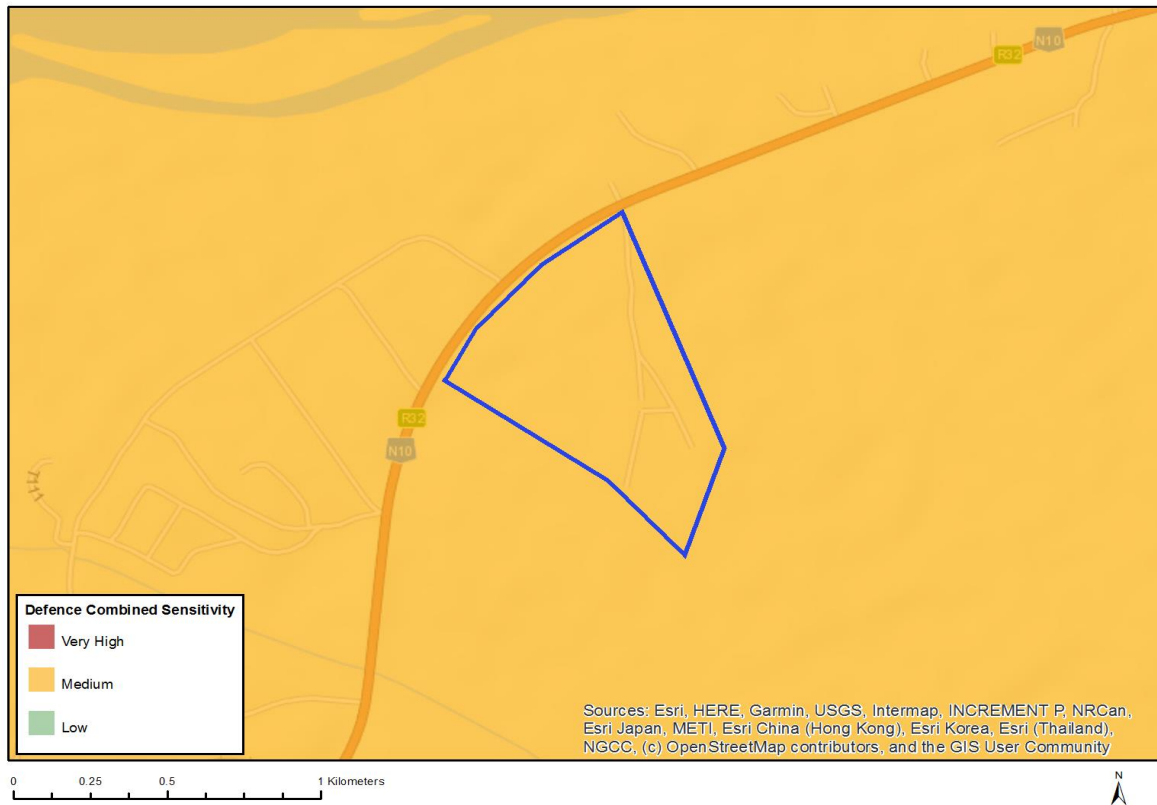


Very High sensitivity	High sensitivity	Medium sensitivity	Low sensitivity
	X		

Sensitivity Features:

Sensitivity	Feature(s)
High	Within 8 km of other civil aviation aerodrome
Medium	Within 5 km of an air traffic control or navigation site

MAP OF RELATIVE DEFENCE THEME SENSITIVITY

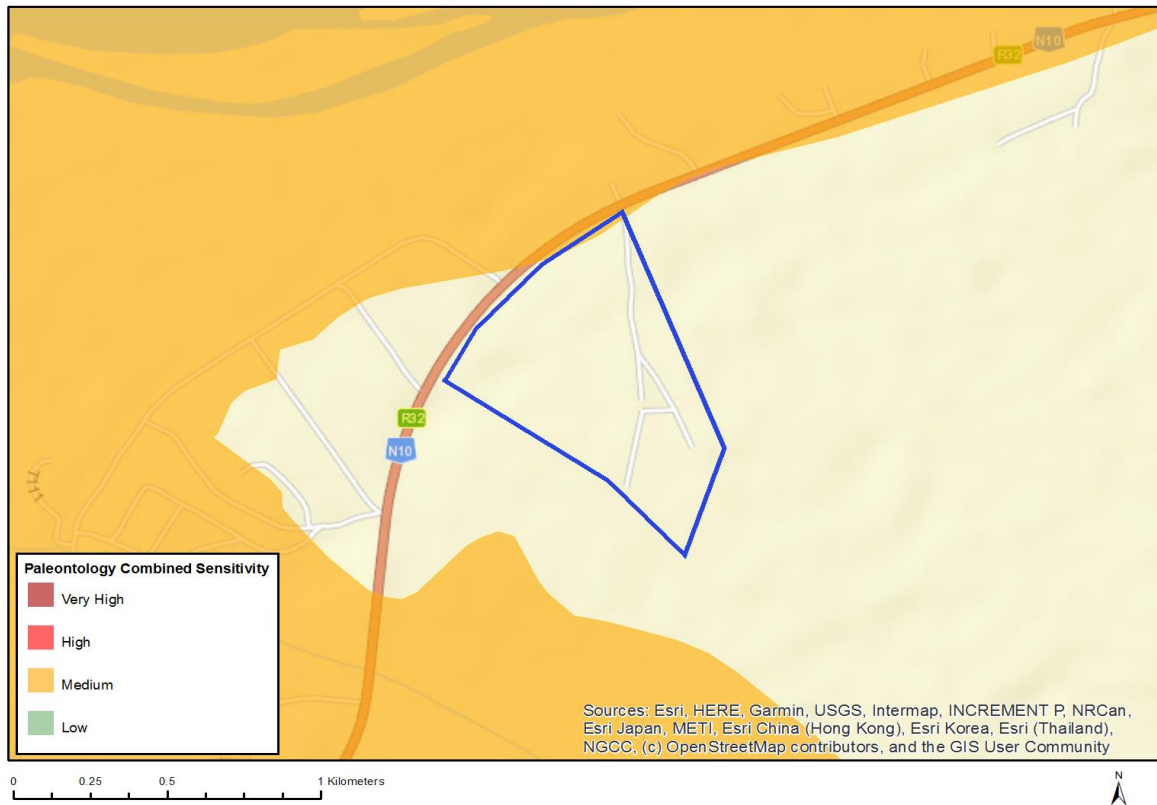


Very High sensitivity	High sensitivity	Medium sensitivity	Low sensitivity
		X	

Sensitivity Features:

Sensitivity	Feature(s)
Medium	Defence Site

MAP OF RELATIVE PALEONTOLOGY THEME SENSITIVITY

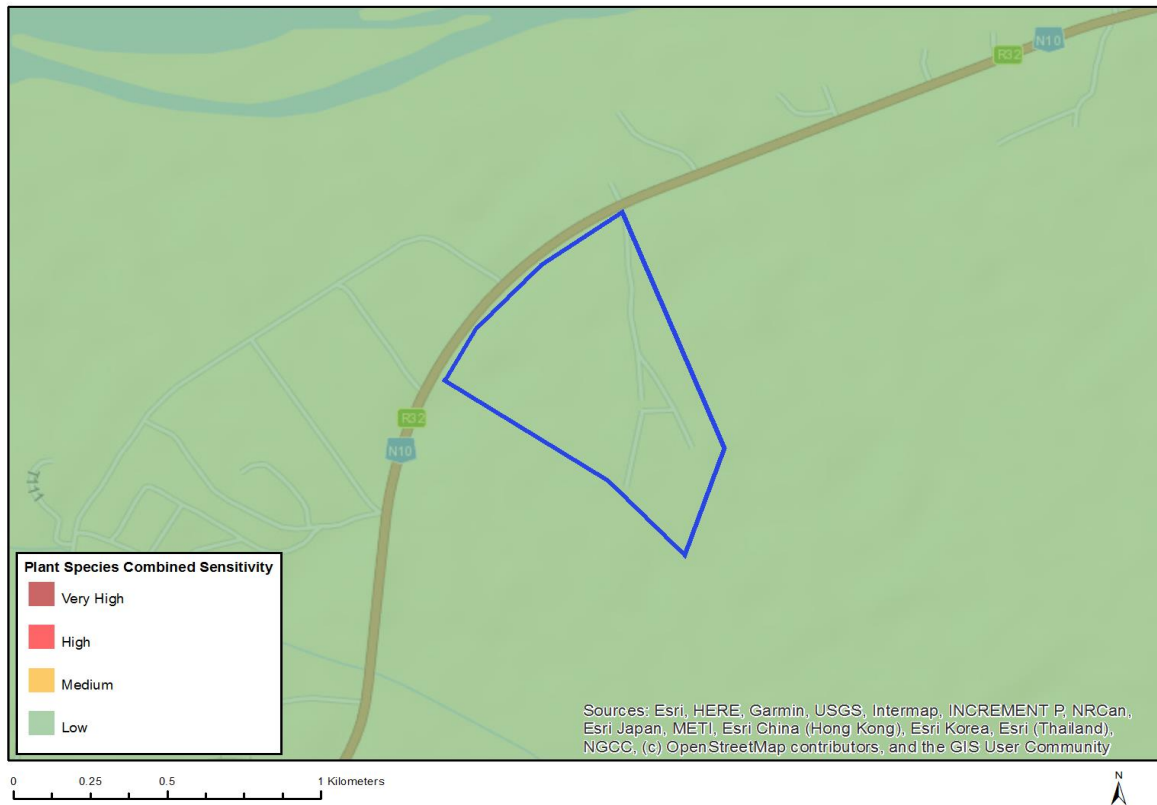


Very High sensitivity	High sensitivity	Medium sensitivity	Low sensitivity
		X	

Sensitivity Features:

Sensitivity	Feature(s)
Medium	Features with a Medium paleontological sensitivity

MAP OF RELATIVE PLANT SPECIES THEME SENSITIVITY



Very High sensitivity	High sensitivity	Medium sensitivity	Low sensitivity
			X

Sensitivity Features:

Sensitivity	Feature(s)
Low	Low Sensitivity

MAP OF RELATIVE TERRESTRIAL BIODIVERSITY THEME SENSITIVITY



Very High sensitivity	High sensitivity	Medium sensitivity	Low sensitivity
X			

Sensitivity Features:

Sensitivity	Feature(s)
Very High	Critical Biodiversity Area 2
Very High	Ecological Support Area