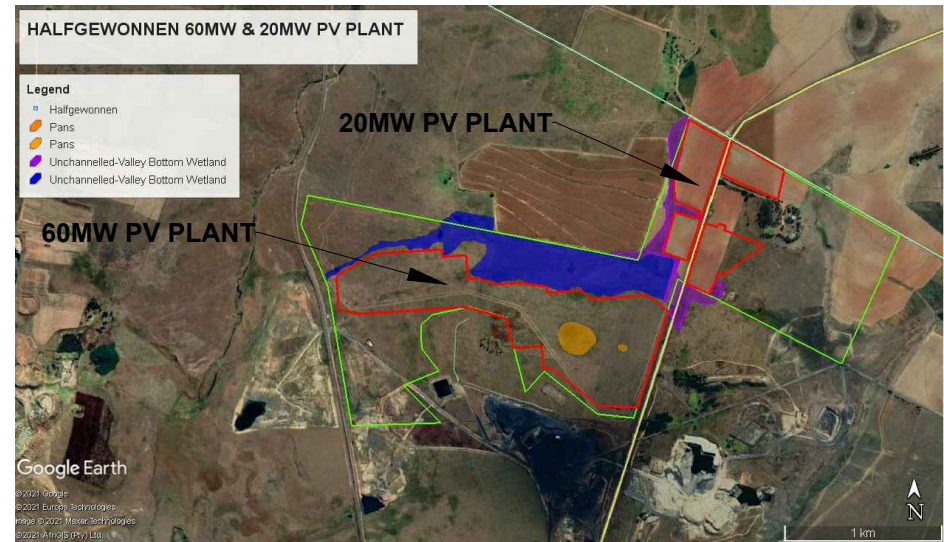
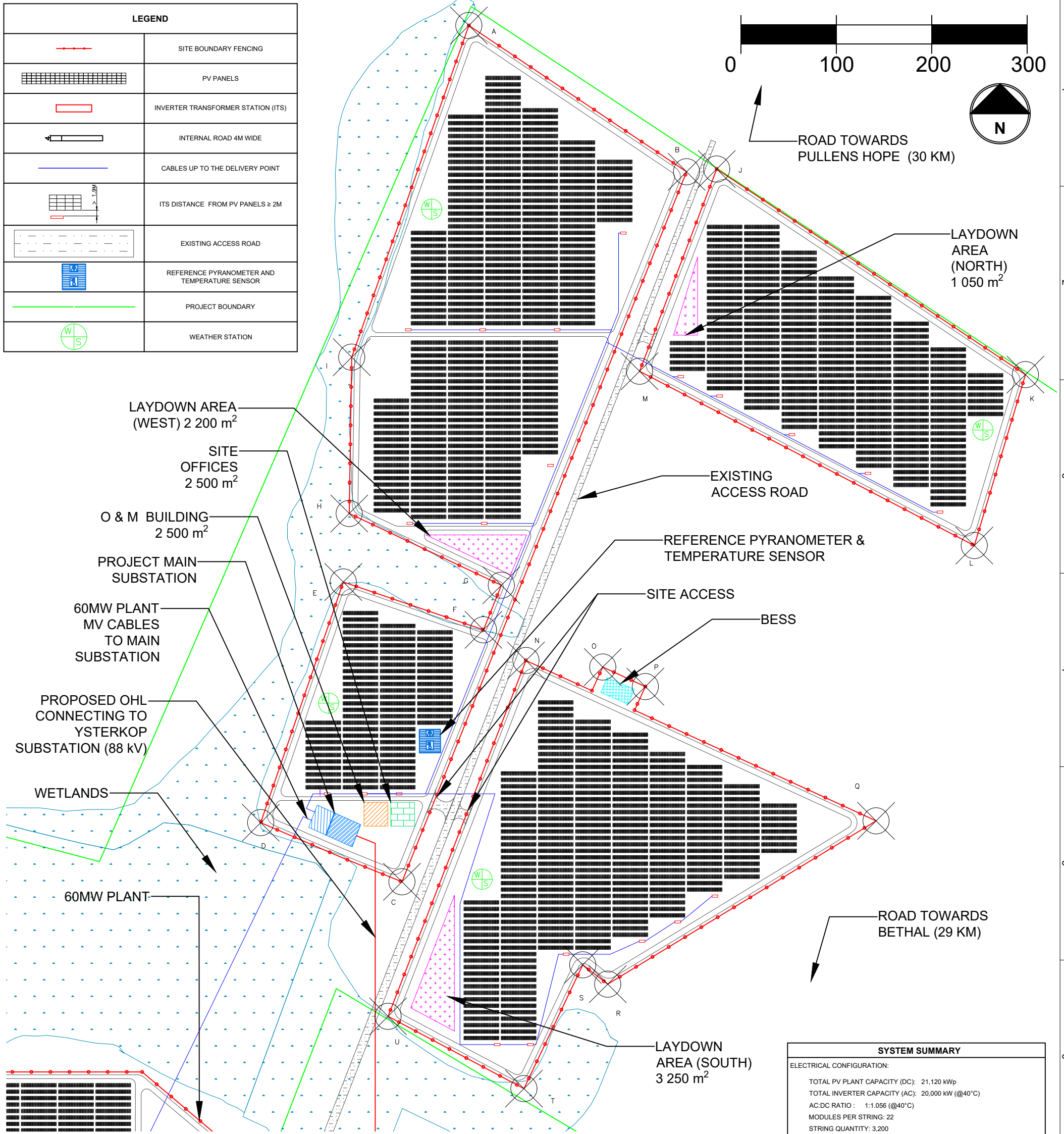
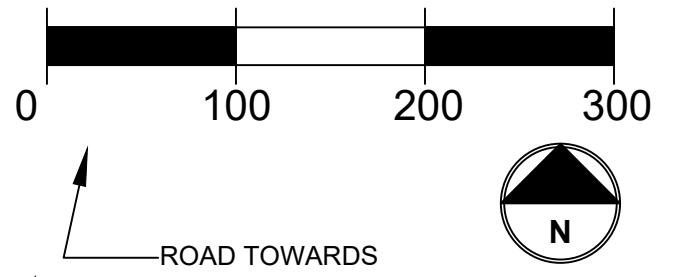


LEGEND	
	SITE BOUNDARY FENCING
	PV PANELS
	INVERTER TRANSFORMER STATION (ITS)
	INTERNAL ROAD 4M WIDE
	CABLES UP TO THE DELIVERY POINT
	ITS DISTANCE FROM PV PANELS ≥ 2M
	EXISTING ACCESS ROAD
	REFERENCE PYRANOMETER AND TEMPERATURE SENSOR
	PROJECT BOUNDARY
	WEATHER STATION



LAND BOUNDARY COORDINATES		
	X	Y
A	1 354 406	7 074 454
B	1 354 635	7 074 300
C	1 354 336	7 073 556
D	1 354 188	7 073 618
E	1 352 920	7 073 870
F	1 354 422	7 073 820
G	1 354 440	7 073 867
H	1 354 281	7 073 942
I	1 354 284	7 074 106
J	1 354 666	7 074 303
K	1 354 990	7 074 088
L	1 354 936	7 073 908
M	1 354 585	7 074 091
N	1 354 466	7 073 788
O	1 353 547	7 073 781
P	1 354 591	7 073 761
Q	1 354 833	7 073 620
R	1 354 552	7 073 449
S	1 354 526	7 073 469
T	1 354 464	7 073 339
U	1 354 322	7 073 415

SYSTEM SUMMARY	
ELECTRICAL CONFIGURATION:	
TOTAL PV PLANT CAPACITY (DC):	21,120 kWp
TOTAL INVERTER CAPACITY (AC):	20,000 kW (@40°C)
AC:DC RATIO :	1:1.056 (@40°C)
MODULES PER STRING:	22
STRING QUANTITY:	3,200
PV MODULES:	
MFR:	UNITED RENEWABLE ENERGY (URE)
MODEL:	MONO CRYSTALLINE D6M300H3A
NAMEPLATE:	300 Wp
QUANTITY:	70,400
STRING INVERTERS:	
MFR:	SMA
MODEL:	SUNNY CENTRAL 1000CP XT
NAMEPLATE:	1,100 kVA@25°C, 1,000 kVA@40°C
QUANTITY:	20
TRANSFORMER STATIONS:	
MFR:	STILL TO BE DETERMINED
MODEL:	STILL TO BE DETERMINED
QUANTITY:	20
FIXED TILT ARRAY:	
MFR:	STILL TO BE DETERMINED
MODEL:	STILL TO BE DETERMINED
CONFIGURATION:	4 MODULES IN LANDSCAPE
STRINGS PER TABLE:	STILL TO BE DETERMINED
MODULE TILT:	21°
PITCH:	6.7605 m
GCR:	59.6%
QUANTITY:	STILL TO BE DETERMINED

REV	DATE	DESCRIPTION	DWN	CHKD	APRD
1	25/05/2021	DRAFT	JTH01	SVE02	NVA01
2	18/06/2021	PV ARRAYS ADJUSTMENT	JTH01	SVE02	NVA01

HALFGEWONNEN 20MW PLANT  
DRAFT PRELIMINARY LAYOUT

**PRELIMINARY NOT FOR CONSTRUCTION**

RINA CONSULTING  
WWW.RINAGROUP.ORG  
WWW.RINA CONSULTING.ORG