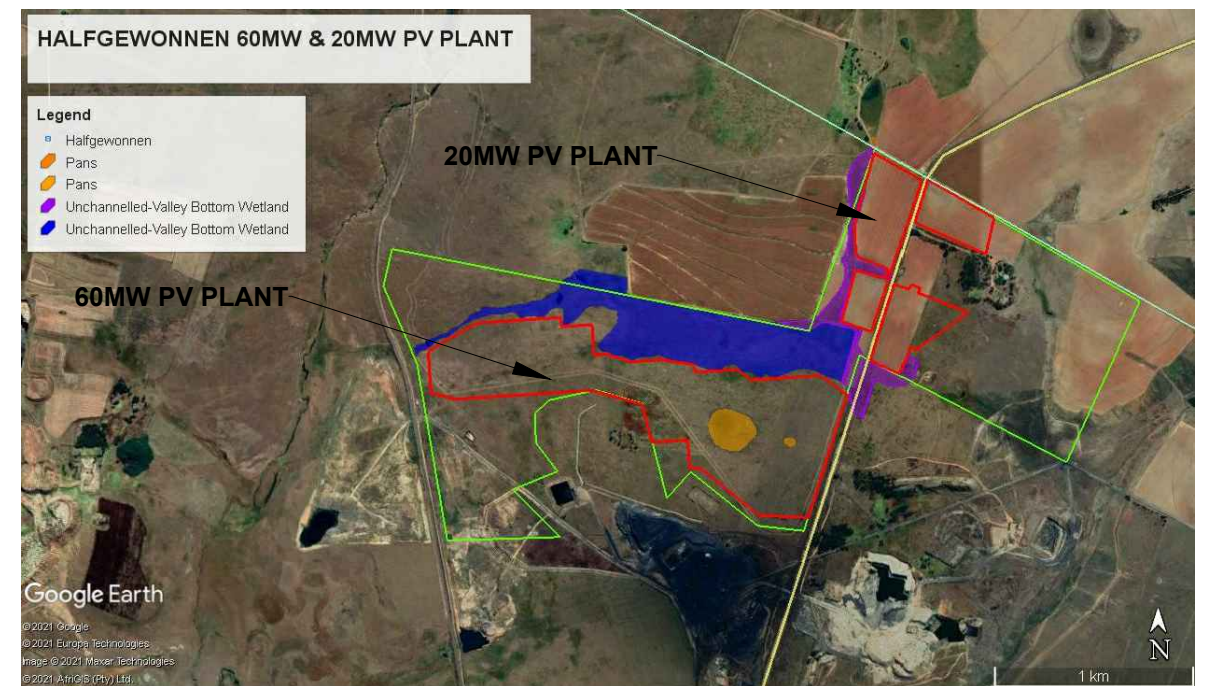


SYSTEM SUMMARY	
<b>ELECTRICAL CONFIGURATION:</b>	
TOTAL PV PLANT CAPACITY (DC):	63,360 kWp
TOTAL INVERTER CAPACITY (AC):	60,000 kW (@40°C)
AC:DC RATIO :	1:1.056 (@40°C)
MODULES PER STRING:	22
STRING QUANTITY:	9,600
<b>PV MODULES:</b>	
MFR:	UNITED RENEWABLE ENERGY (URE)
MODEL:	MONO CRYSTALLINE D6M300H3A
NAMEPLATE:	300 Wp
QUANTITY:	211,200
<b>STRING INVERTERS:</b>	
MFR:	SMA
MODEL:	SUNNY CENTRAL 1000CP XT
NAMEPLATE:	1,100 kVA@25°C, 1,000 kVA@40°C
QUANTITY:	60
<b>TRANSFORMER STATIONS:</b>	
MFR:	STILL TO BE DETERMINED
MODEL:	STILL TO BE DETERMINED
QUANTITY:	60
<b>FIXED TILT ARRAY:</b>	
MFR:	STILL TO BE DETERMINED
MODEL:	STILL TO BE DETERMINED
CONFIGURATION:	4 MODULES IN LANDSCAPE
STRINGS PER TABLE:	STILL TO BE DETERMINED
MODULE TILT:	21°
PITCH:	6.7605 m
GCR:	59.6%
QUANTITY:	STILL TO BE DETERMINED

LEGEND	
	SITE BOUNDARY FENCING
	PV PANELS
	INVERTER TRANSFORMER STATION (ITS)
	INTERNAL ROAD 4M WIDE
	CABLES UP TO THE DELIVERY POINT
	ITS DISTANCE FROM PV PANELS ≥ 2M
	EXISTING ACCESS ROAD
	REFERENCE PYRANOMETER AND TEMPERATURE SENSOR
	PROJECT BOUNDARY
	WEATHER STATION

LAND BOUNDARY COORDINATES		
	X	Y
A	1 352 329	7 073 733
B	1 352 764	7 073 733
C	1 352 764	7 073 685
D	1 352 920	7 073 685
E	1 352 920	7 073 536
F	1 352 998	7 073 536
G	1 352 998	7 073 527
H	1 353 109	7 073 489
I	1 353 262	7 073 489
J	1 353 418	7 073 455
K	1 353 427	7 073 446
L	1 353 427	7 073 415
M	1 353 644	7 073 415
N	1 353 708	7 073 357
O	1 353 064	7 073 357
P	1 354 192	7 073 249
Q	1 353 957	7 072 643
R	1 353 706	7 072 671
S	1 353 420	7 072 932
T	1 353 368	7 072 932
U	1 353 368	7 073 076
V	1 353 186	7 073 076
W	1 353 149	7 073 270
X	1 352 899	7 073 358
Y	1 352 201	7 073 358
Z	1 352 071	7 073 395
A1	1 352 071	7 073 610



**PRELIMINARY NOT FOR CONSTRUCTION**

HALFGEWONNEN 60MW PLANT

DRAFT PRELIMINARY LAYOUT

REV	DATE	DESCRIPTION	DWN	CHKD	APRD
1	25/05/2021	DRAFT	JTH01	SVE02	NVA01
2	18/06/2021	PV ARRAYS ADJUSTMENT	JTH01	SVE02	NVA01

**LATITUDE:** 26°12'26.62"S  
**LONGITUDE:** 29°31'49.66"E  
**SCALE:** NTS  
**ORIGINAL SIZE:** -  
**COORDINATE SYSTEM:** UNIVERSAL TRANSVERSE MERCATOR (UTM)  
**DRAWING NUMBER:** HGW-CIV-DRW-01-A1