



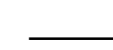



# Platreef Resources (Pty) Ltd



## Soil Types

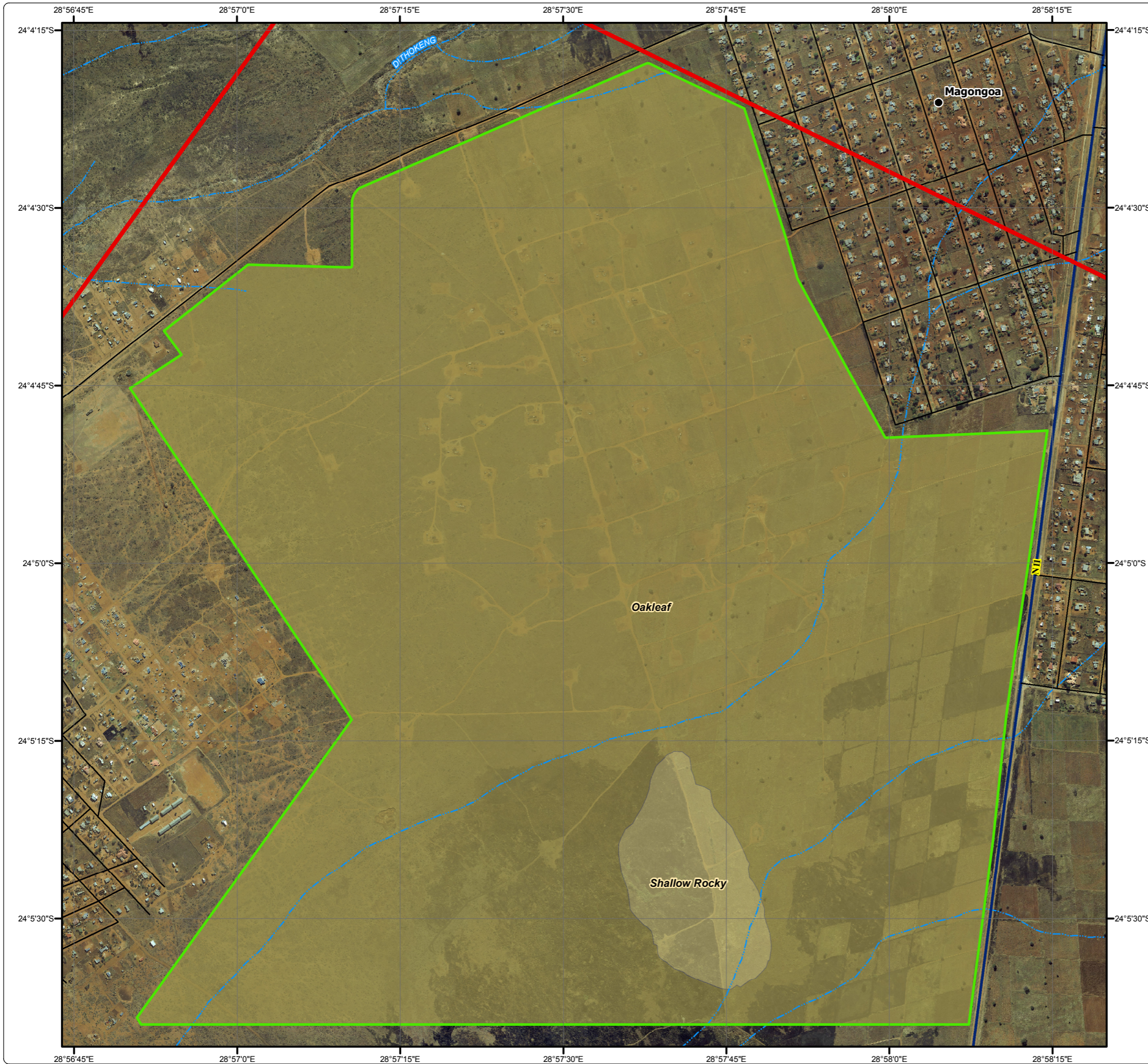
### - Infrastructure Area -

#### Legend

-  ESIA Study Area
-  Infrastructure Area
-  Arterial / National Route
-  Main Road
-  Minor Road
-  Non-Perennial Stream

#### Soil Types

-  Oakleaf
-  Shallow Rocky



**DIGBY WELLS**  
ENVIRONMENTAL

• Sustainability • Service • Positive Change • Professionalism • Future Focused • Integrity

Projection: Transverse Mercator	Ref #: scc.PLA1677.201309.124
Datum: Hartebeesthoek 1994	Revision Number: 1
Central Meridian: 29°E	Date: 18/09/2013

