

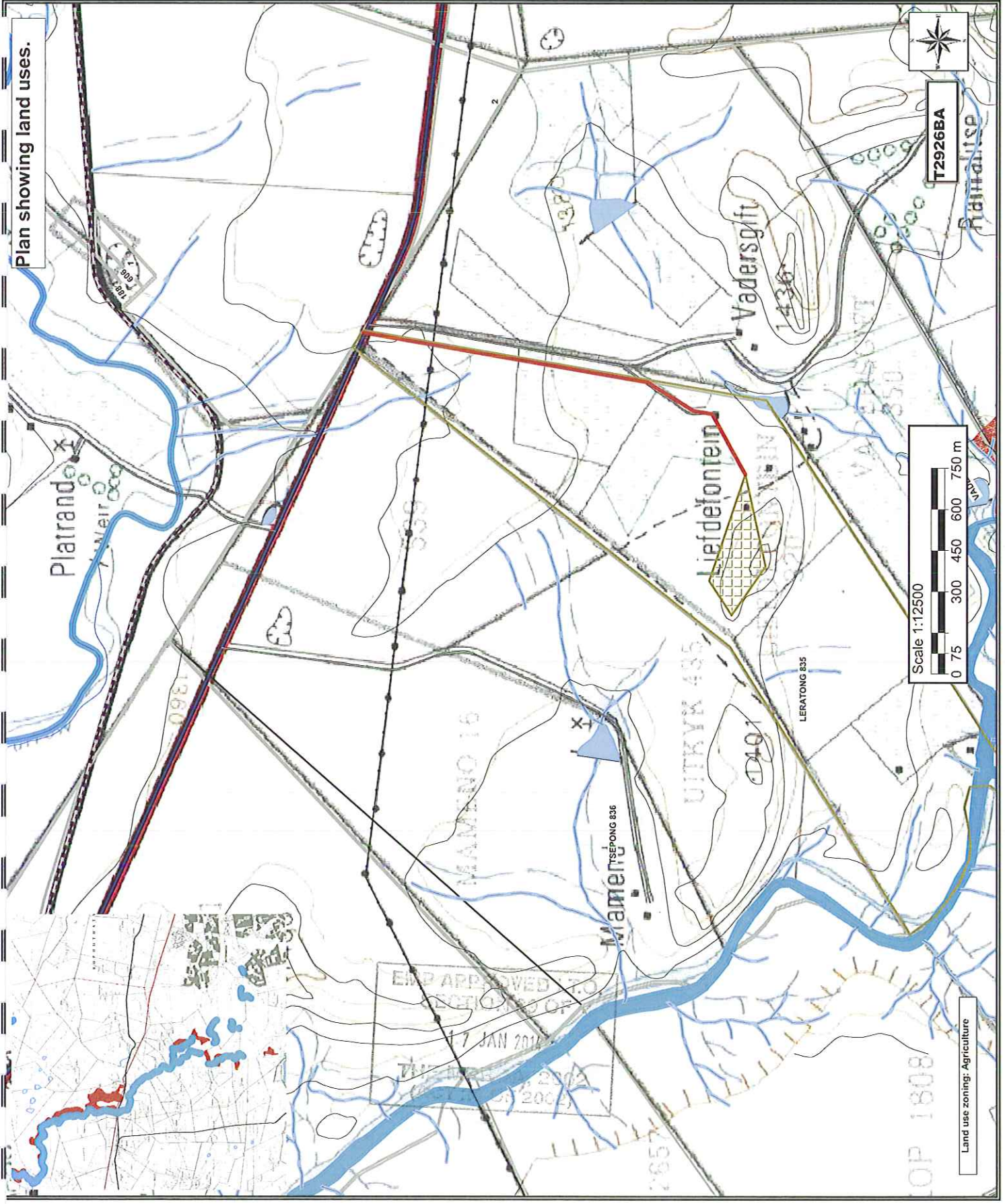
APPENDIX A

**MAP INDICATING SPATIAL LOCALITY OF
ENVIRONMENTAL, CULTURAL/HERITAGE AND
CURRENT LAND USE FEATURES**

EMP APPROVED I.T.O.
SECTION 39 OF
17 JAN 2014
THE MPRDA, 2002
(ACT 25 OF 2002)



Plan showing land uses.



Legend

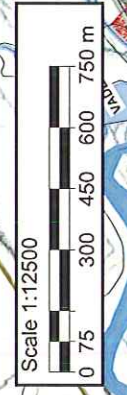
- DWAFA DATA 1999
- Quaternary Catchments C52B
- WMA 13
- Railway
- Standard
- Water source
- Windpump
- Eroded area
- 50,000 Vector
- Dam
- Dam Wall
- Erosion Area
- Powerline
- Railways
- Double Non Perennial Rivers
- Double Perennial Rivers
- Single Non Perennial Rivers
- Single Perennial Rivers
- N8
- Other Roads
- Secondary Roads
- Contours 20m
- Leratong 835 Portion 0
- Leratong Mining Permit Area
- Site access road

Proposed area coordinates:
 A 29.189337°S; 26.617684°E
 B 29.188598°S; 26.618768°E
 C 29.189794°S; 26.622745°E
 D 29.190533°S; 26.619319°E
 A 29.189337°S; 26.617684°E

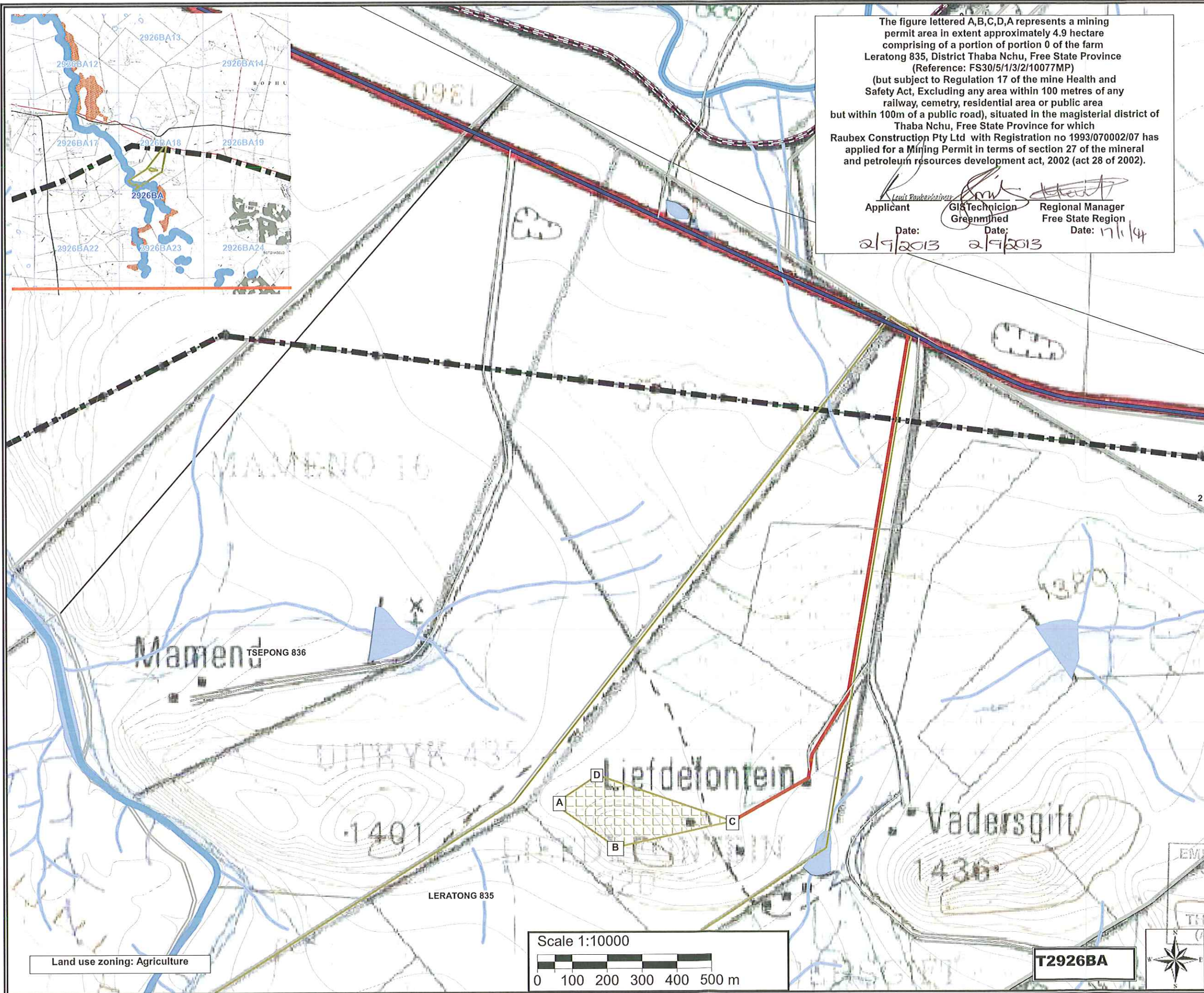
Mining area: 4.9ha
 Client: **RAUPE**
 Consultant: **Greenfield Environmental**

Land use zoning: Agriculture

EMR APPROVED TO
 SECTION 27 OF
 17 JAN 2014



T2926BA



Legend

DWAF DATA 1999

- Quaternary Catchments C52B
- WMA 13

Cadastral Data

Free State Province

- Original Farm
- Farm Portion

Structure

- Power line single
- Railway
- Standard
- Free State Province

Contours

- 2926

Leratong Mining Permit Area

- Leratong 835 Portion 0 50 000 Vector

Inland water

- Dam
- River
- Non-perennial extent
- Non-perennial center line (lines)
- Perennial center line
- Site access road
- Leratong 835 Portion 0 50 000 Vector
- Bridge(Main_Bridge)[4]
- Dam Wall
- Powerline
- Single Non Perennial Rivers
- Single Perennial Rivers
- N8
- Roads(On_Off_Ramp)[4]

Proposed area coordinates:

- A 29.189337°S; 26.617684°E
- B 29.188598°S; 26.618768°E
- C 29.189794°S; 26.622745°E
- D 29.190533°S; 26.619319°E
- A 29.189337°S; 26.617684°E

Mining area size: 4.9ha
 Client:

RAUBEX

EMPR APPROVED I.T.O.
 SECTION 39 OF
 Consultant:
 7 JAN 2014

Greenmined Environmental