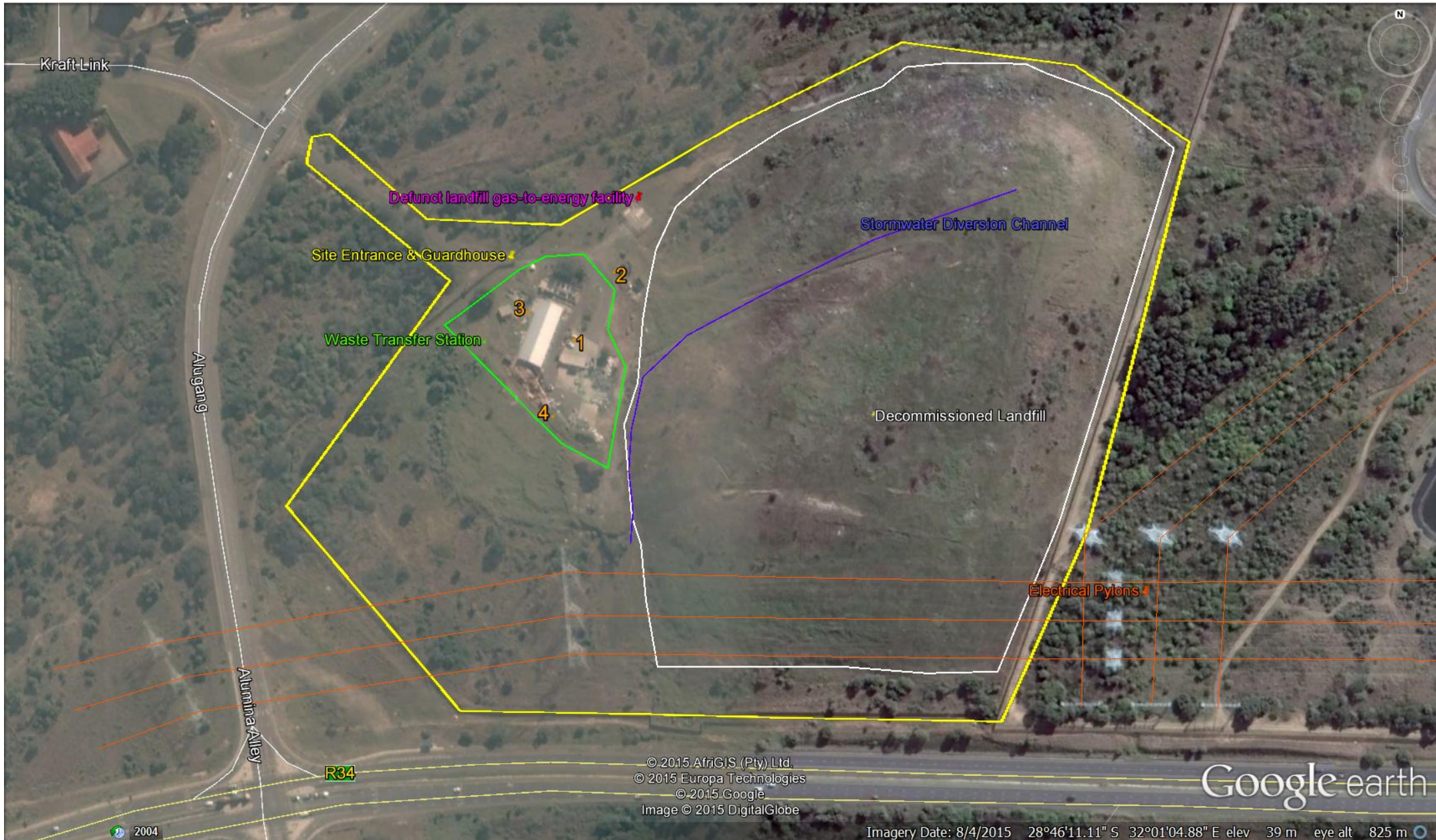


APPENDIX C: PHOTOGRAPHS: ALTON WASTE FACILITY



Google Earth satellite image of the Alton Waste Facility and its site elements

Picture	Description
 <p>A large white sign on two posts at the site entrance. The sign features the 'DIVISION WASTE MANAGEMENT' logo and lists the 3Rs: REDUCTION, RE-USE, RECYCLING, RECOVERY, and REPAIR. Below this, it reads 'ALTON RECYCLING & RESOURCE CENTRE' and lists sponsors: mpact, EcoSystems, and ZCO. At the bottom, it states 'COMMITTED TO THE NATIONAL WASTE-SUMMIT DECLARATION-2009'.</p> <p>2015-09-04</p>	<p>Signage at site entrance.</p>
 <p>A white sign on a post in a grassy area. The text reads: 'GARDEN REFUSE MEANS REFUSE GENERATED ON THE PREMISES AS A RESULT OF NORMAL GARDENING ACTIVITIES, SUCH AS GRASS CUTTINGS, LEAVES, SMALL PLANTS, FLOWERS AND OTHER SIMILAR AND LIGHT MATTER'. Below this, it says 'OR REFERRED TO EMPANGENI REGIONAL SITE.'.</p> <p>2015-09-04</p>	<p>Signage at site entrance.</p> <p>It is stated that only garden waste is accepted, but the facility does in fact accept various waste types.</p>
 <p>A photograph showing a large area of stockpiled glass in white bags. In the background, there is a decommissioned landfill area with a grassy hillside.</p> <p>2015-09-04</p>	<p>Looking south-east.</p> <p>Photograph taken near Position 1.</p> <p>Stockpiled glass. Note the decommissioned landfill in the background.</p>
 <p>A photograph of a carpenter working on a site. The area is filled with stacks of wooden pallets and other materials. A large black tire is visible in the foreground.</p> <p>2015-09-04</p>	<p>Looking south-west.</p> <p>Photograph taken near Position 1.</p> <p>Pallets are being made into saleable items by a carpenter on site.</p>



Looking west.
Photograph taken near Position 1.
Area where employees (of the NGO with whom uMhlathuze LM has an SLA) sort the recyclable materials to be sold off.



Looking north-west.
Photograph taken near Position 1.
Admin block, plans are underway for its rebuilding.



Looking east.
Photograph taken near Position 2.
Decommissioned landfill. Note the stormwater diversion channel. Cows have entered the site for grazing.



Looking east.
Photograph taken near Position 2.
Decommissioned landfill. Note the stormwater diversion channel at the foot of the landfill. This needs to be cleaned and maintained.



Looking north-east.
Photograph taken near Position 2.
Defunct landfill gas energy production facility (infrastructure has been removed).



Looking west.
Photograph taken near Position 3.
Defunct leachate collection infrastructure.



Looking south-west.
Photograph taken near Position 3.
Defunct leachate collection infrastructure.



Looking east.
Photograph taken near Position 4.
Waste tyre stockpile.



Looking south-west.

Photograph taken near
Position 4.

Open land beyond site
fence.