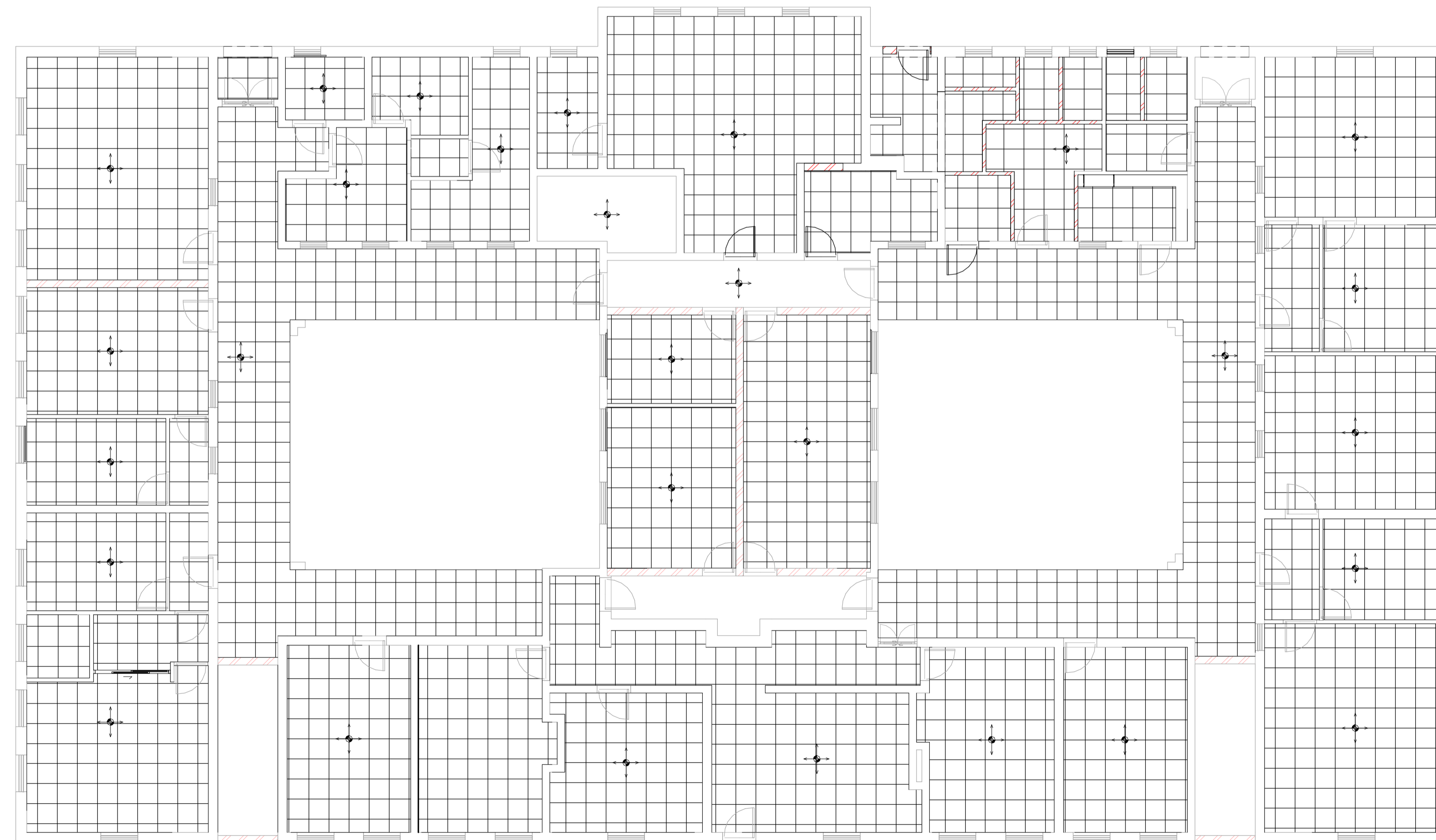


Door No	58	56/57	7 to 51	1/2/3/4/5/6	55	52/53/54
Manufacturer Code	Swartland Cape Culture Purpose Made 2 Panel bottom with bolection moulds and small pane top hardwood door.	Swartland Cape Culture Purpose Made 2 Panel bottom with bolection moulds and small pane top hardwood door.	Swartland Cape Culture Purpose Made 2 Panel bottom with bolection moulds and small pane top hardwood door.	Cape Culture Elegance medium density fibre door Code: MDFELGH10	Swartland Cape Culture Purpose Made 2 Panel bottom with bolection moulds and small pane top hardwood door.	DS50/1 - SABS Category 1 Strongroom Door
No Required	X 1 Opening Outward	x 2 Opening Outward	x 42	x 6	x 1 Opening Outward	x 3
Frame	Swartland Cape Culture door frame with full glass top light with 90 x 70mm rebated, moulded, grooved and weather grooved hardwood door frame with full glass top light and 90 x 44mm splay rebated, grooved and weather grooved sealed with a linseed oil based transit stabilizing sealer.	Swartland Cape Culture door frame with full glass top light with 90 x 70mm rebated, moulded, grooved and weather grooved hardwood door frame with full glass top light and 90 x 44mm splay rebated, grooved and weather grooved sealed with a linseed oil based transit stabilizing sealer.	Swartland Cape Culture door frame with full glass top light with 90 x 70mm rebated, moulded, grooved and weather grooved hardwood door frame with full glass top light and 90 x 44mm splay rebated, grooved and weather grooved sealed with a linseed oil based transit stabilizing sealer.	Swartland Cape Culture door frame with 90 x 70mm rebated, moulded, grooved and weather grooved hardwood door frame and 90 x 44mm splay rebated, grooved and weather grooved sealed with a linseed oil based transit stabilizing sealer.	Swartland Cape Culture door frame with 90 x 70mm rebated, moulded, grooved and weather grooved hardwood door and weather grooved hardwood door and 90 x 44mm splay rebated, grooved and weather grooved sealed with a linseed oil based transit stabilizing sealer.	Factory Fitted
Finishing	Sand down new timber surface to a fine smooth finish and apply three coats Swartland Maxicare Mahogany quality timber sealant (Code: MC/W/MAH/1), all in accordance with the manufacturer's recommendations.	Sand down new timber surface to a fine smooth finish and apply three coats Swartland Maxicare Mahogany quality timber sealant (Code: MC/W/MAH/1), all in accordance with the manufacturer's recommendations.	Sand down new timber surface to a fine smooth finish and apply three coats Swartland Maxicare Mahogany quality timber sealant (Code: MC/W/MAH/1), all in accordance with the manufacturer's recommendations.	Coat Pink Wood Primer & Minimum 2 Coats Polyurethane Satin Enamel All to Manufacture Specs.	Sand down new timber surface to a fine smooth finish and apply three coats Swartland Maxicare Mahogany quality timber sealant (Code: MC/W/MAH/1), all in accordance with the manufacturer's recommendations.	As Supplied by Manufacture
Accessories	Union Aluminum Door Stop (AL 8730AS)	Union Aluminum Door Stop (AL 8730AS)	Union Aluminum Door Stop (AL 8730AS)	Union Aluminum Door Stop (AL 8730AS)	Union Aluminum Door Stop (AL 8730AS)	
Ironmongery	L-2241-78SS Union Oval Cy Lock SS CZ692-13SC Radius Furniture Oval JH-BB-STD-2-SS SS 2BB But Hinge EN1935GRD13 2X6SC Cylinder Oval KD	L-2241-78SS Union Oval Cy Lock SS CZ692-13SC Radius Furniture Oval JH-BB-STD-2-SS SS 2BB But Hinge EN1935GRD13 2X6SC Cylinder Oval KD	L-2241-78SS Union Oval Cy Lock SS CZ692-13SC Radius Furniture Oval JH-BB-STD-2-SS SS 2BB But Hinge EN1935GRD13 2X6SC Cylinder Oval KD	L-2241-78SS Union Oval Cy Lock SS CZ692-13SC Radius Furniture Oval JH-BB-STD-2-SS SS 2BB But Hinge EN1935GRD13 2X6SC Cylinder Oval KD	L-2241-78SS Union Oval Cy Lock SS CZ692-13SC Radius Furniture Oval JH-BB-STD-2-SS SS 2BB But Hinge EN1935GRD13 2X6SC Cylinder Oval KD	Factory Fitted : 7-Lever Security keylock

Burglar Bars		
Type 1	Type 2	Type 3
Trellidor T900 Burglar Bars	Trellidor T900 Burglar Bars	Trellidor T900 Burglar Bars
x 24	x 35	x 6
Galvanized steel powder coated : Matt Bronze	Galvanized steel powder coated : Matt Bronze	Galvanized steel powder coated : Matt Bronze
Galvanized steel powder coated : Matt Bronze		Galvanized steel powder coated : Matt Bronze
None	None	None
None	None	None

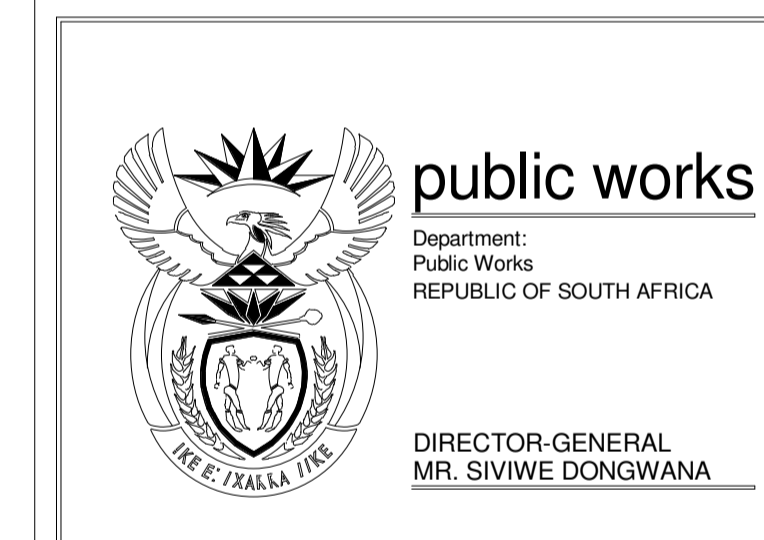
Window No	W1	W2	W3
Manufacturer Code	SS15CD Cape Culture Cape Dutch sliding sash window	SS4CD Cape Culture Cape Dutch sliding sash window	SS5CD Cape Culture Cape Dutch sliding sash window
No Required	x 24	x 35	x 6
Frame	Timber	Timber	Timber
Finishing	Sealed with a linseed oil based transit stabilizing sealer with casements fitted with rubber weather seals and glazing beads	Sealed with a linseed oil based transit stabilizing sealer with casements fitted with rubber weather seals and glazing beads	Sealed with a linseed oil based transit stabilizing sealer with casements fitted with rubber weather seals and glazing beads
Accessories	Fitted with solid brass handles	Fitted with solid brass handles	Fitted with solid brass handles
Burglar Bars	Yes Burglar Bars Type 1	Yes Burglar Bars Type 2	Yes Burglar Bars Type 2
Window No	WD1	WD5	
Manufacturer Code	Purpose Made Cape Culture Cape Dutch sliding sash window	Purpose Made Aluminum Sliding	
No Required	x 1	x 1	
Frame	Timber	Aluminum	
Finishing	Sealed with a linseed oil based transit stabilizing sealer with casements fitted with rubber weather seals and glazing beads	Powder Coated Bronze	
Accessories		Factory fitted Window Locks	
Burglar Bars	No	No	




Ceiling Layout
Scale 1:100



No.	DATE	AMENDMENT	D.P.W.
Copyright vests in the Department of Public Works			
as-built drawings			
certified as-built drawings as per Centralised Drawing Archive AS-BUILT DRAWING REQUIREMENTS			
name: _____			
date: _____			
professional registration no.: _____			
cad file name		page type	
		A 1	



consultant

 P.O. BOX 217
 MKUZE 3065
 TEL: 035 573 1612 E:web@remeb.co.za
 FAX: 035 573 1612 CELL: 082 321 8437

discipline **Architecture**
 service _____

**Nongoma Agriculture Office:
 Repairs and Renovations to
 Office Accommodations**

WCS number **WCS054024**

drawing title
Schedules / Ceiling Layout

ref.no. **WCS054024** designed **D Moffett**
 scale **1:100** drawn **E Swanepoel**
 date **October 2013** checked **D Moffett**

drawing number
Arch-010 - Schedules and Details