



29 April 2013

**Attention: Mark Day
Enviroworks**

Dear Mr Day

LETTER FOR EXEMPTION REQUEST: Installation of optic fibre cables along the R101 and M57 roads

A site visit was conducted and both routes were driven in order to get first-hand information on the routes. Please see photographs and map attached.

It is hereby confirmed that a Heritage Impact Assessment (HIA) would not be necessary for the area and that exemption can be requested from the South African Heritage Resources Agency (SAHRA). It clear to me that no heritage resources are to be found on the impacted areas as it is completely disturbed.

Both areas consist of the shoulder of the road reserve. It includes landscaped areas consisting of streetscapes with trees, fences, pavements etc. In certain areas the route for the optic cables follows lawns alongside residential areas. Other features indicating disturbance is railway tracks, a station, pioneer plant species such as grass wattle trees, bridges, ploughed fields and fields containing maize crops, a nursery and industrial areas.

Resultantly all possible signs of heritage resources would have been demolished. Therefore it is very unlikely that any archaeological or cultural historical site or occurrence will be disturbed. There will also not be a negative impact on adjacent properties as none of these seem to have building or other structure of heritage significance.

I can therefore conclude that the project can be exempted from a HIA. This letter should therefore be submitted to the South African Heritage Resources Agency in order to receive exemption.

The developer should however note that due to the nature of archaeological material, such sites, objects or features, as well as graves and burials may be uncovered during construction activities on site. In such a case work should cease immediately and an archaeologist should be contacted as a matter of urgency in order to assess such occurrences.

I trust that you will find this in order.

Yours faithfully



Dr AC van Vollenhoven: Director

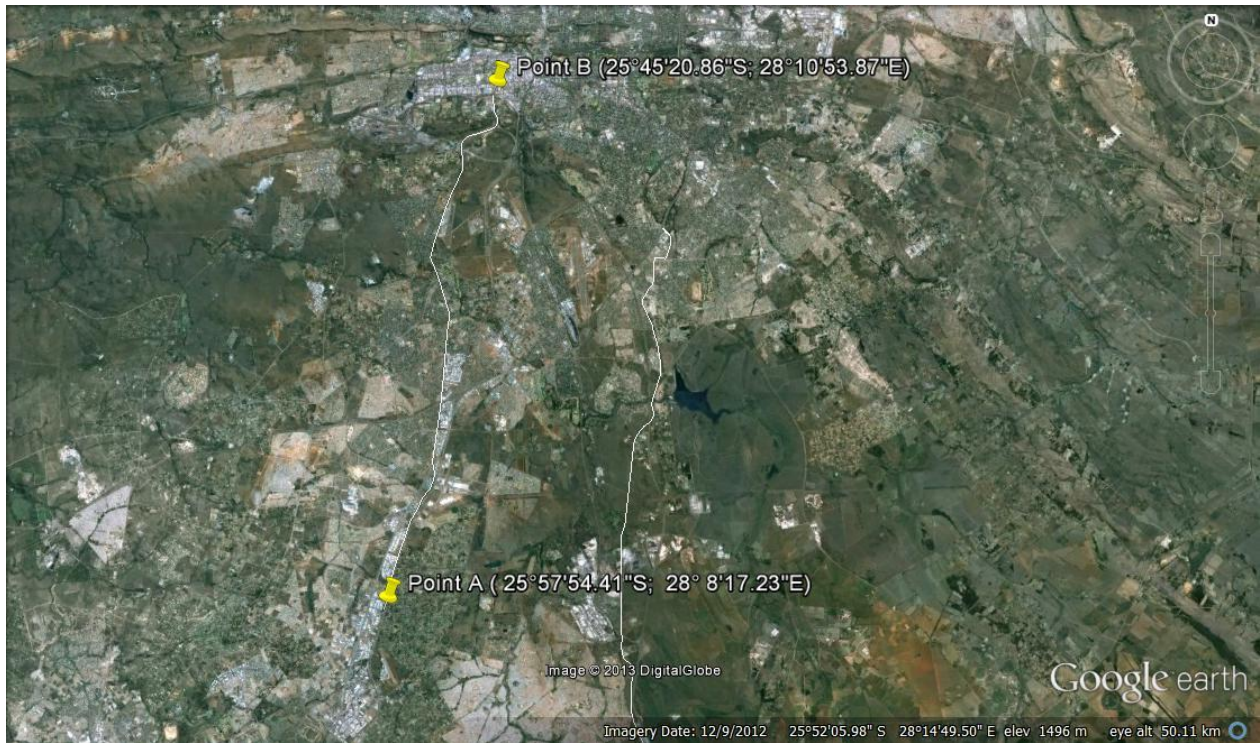


Figure 1 Location of the route for the optic fibre cables along the R101 route.

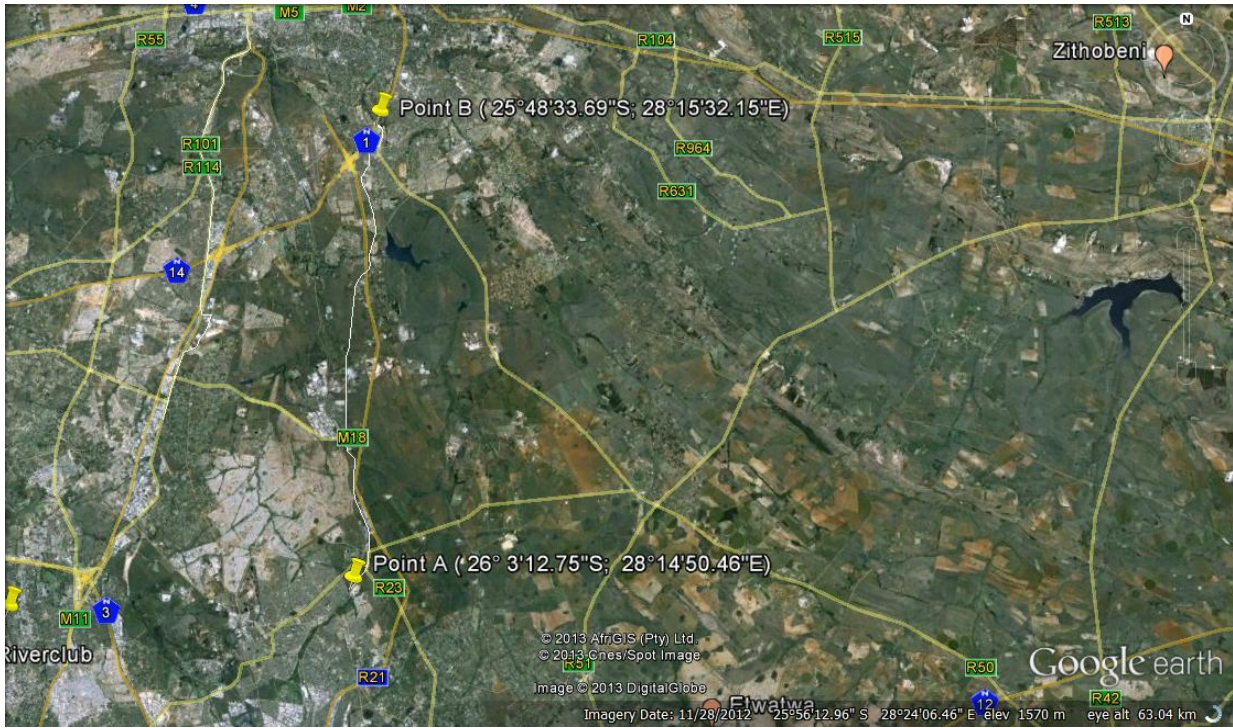


Figure 2 Location of the route for the optic fibre cables along the M57route.

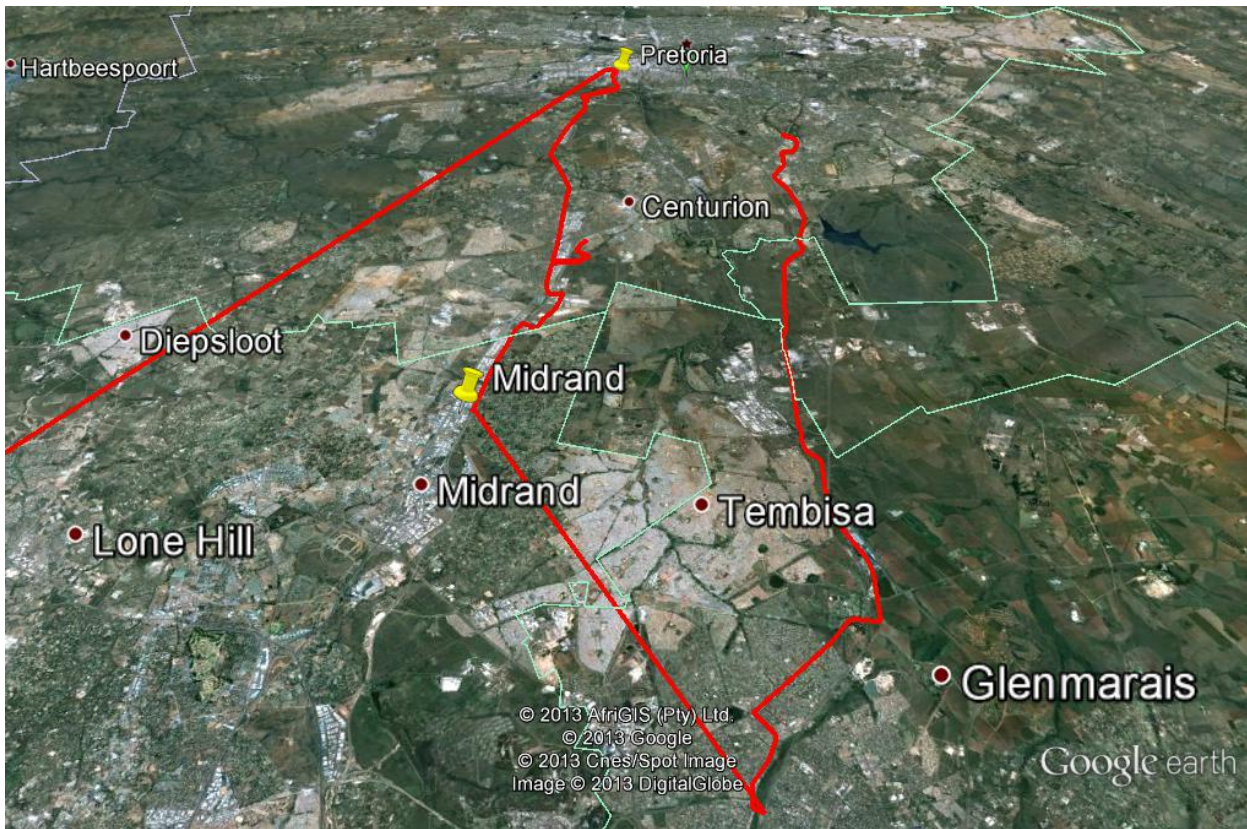


Figure 3 Track route of both routes.



Figure 4 Start of the route along the R101 in Tshwane.



Figure 5 View of landscaped area along the route.



Figure 6 View along the route showing lawns and alien trees.



Figure 7 View along the route next to a railway track.



Figure 8 End of the route along the R101 at the intersection with George Road, Midrand.



Figure 9 Start of the route along the M57 at the Van Riebeeck Station in Kempton Park.



Figure 10 View along the route showing landscaped features.



Figure 11 Maize fields along the M57 route.



Figure 12 View along the route in a residential area.



Figure 13 End of the M57 route at Rigel Avenue in Tshwane.