



18 April 2019

To whom it may concern

LETTER FOR HIA EXEMPTION REQUEST: PROPOSED LEGAE LA BATHO DEVELOPMENT ON ERF 2303 SOSHANGUVE BLOCK F, GAUTENG PROVINCE

Archaetnos cc has been appointed by Texture Environmental Solutions Consultants to provide a motivation for the exemption of doing a Heritage Impact Assessment (HIA) related to the above mentioned development. This is located in Soshanguve towards the north of Pretoria, within the City of Tshwane, Gauteng Province (Figure 1-3).

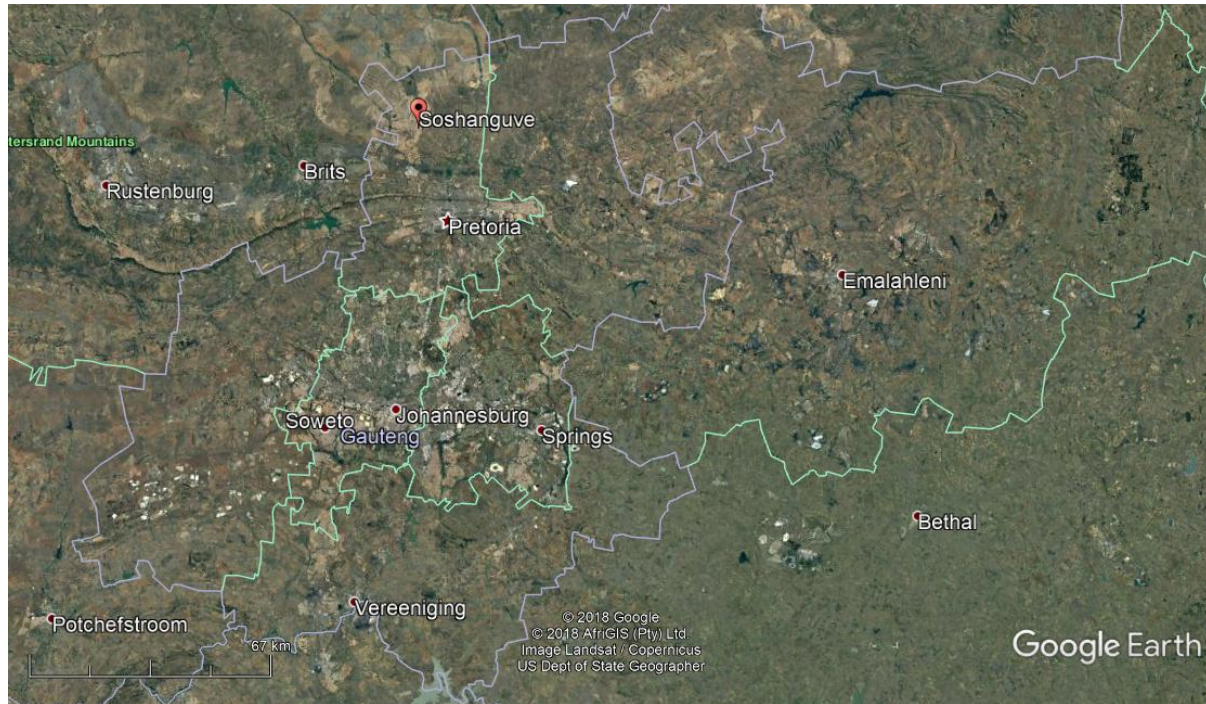


Figure 1: Location of Soshanguve within the Gauteng Province.

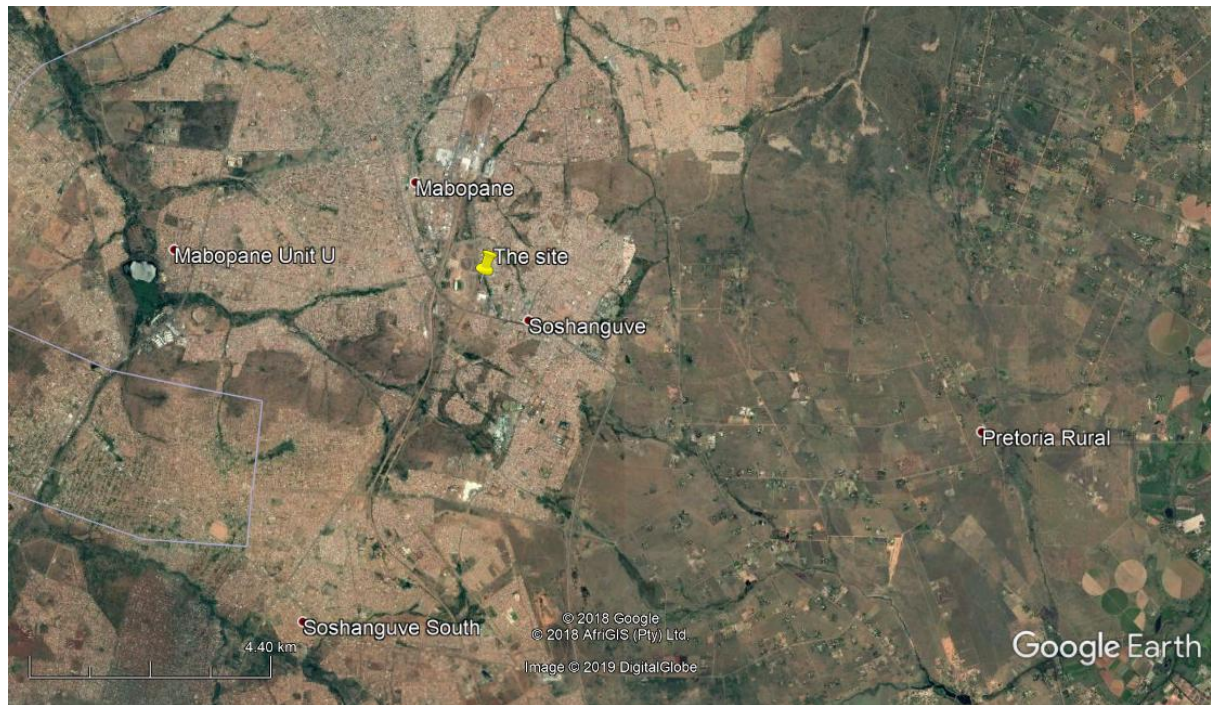


Figure 2: Location of the site within Soshanguve.



Figure 3: Detailed view of the site.

The said development will constitute of approximately 405 residential walk-up units, three storeys in height. The proposal includes the construction of associated infrastructure, including access road, civil services (water, sewer and stormwater reticulation) and electricity.

The erf is just over 4 Ha in extent of which approximately 2,2976 Ha will be developed. A north-south drainage channel cuts across the eastern part of the erf and the 1:100 year flood line area will be excluded from the development.

Field work:

The site was visited on 18 April 2019 and almost the entire area was found to be disturbed (Figure 4-8). The exception is the most south-western corner showing natural vegetation. Disturbance is evident in the weeds and other pioneer plant species growing on site, as well as open patches, illegal dumping and the erection of a shack.



Figure 4: Track route of the survey.



Figure 5: General view of vegetation on site.



Figure 6: View of vegetation along the river.



Figure 7: View of illegal dumping in the surveyed area.



Figure 8: View of open patch and shack on the property.

It therefore is my opinion that the project may be exempted from doing a Heritage Impact Assessment (HIA). The following is applicable:

- The proposed development is within an area already almost entirely disturbed
- Little natural vegetation are to be found on site
- Open areas also indicate disturbance as does pioneer plant species
- Nothing of heritage significance was identified.

Due to the mentioned factors, the chances therefore of finding any heritage related features are indeed extremely slim. It is therefore believed that an additional Heritage Impact Assessment (HIA) is not needed for this project and any of the alternatives can be used. This letter serves as an exemption request to the relevant heritage authority.

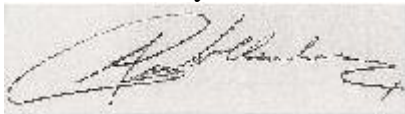
The developer should however note that due to the nature of archaeological material, such sites, objects or features, as well as graves and burials may be uncovered during construction activities on site. In such a case work should cease immediately and an archaeologist should be contacted as a matter of urgency to assess such occurrences.

Recommendation:

That the development be exempted from doing an HIA.

I trust that you will find this in order.

Yours faithfully

A handwritten signature in dark ink, appearing to read 'AC van Vollenhoven', written over a light-colored rectangular background.

Prof AC van Vollenhoven: Director