

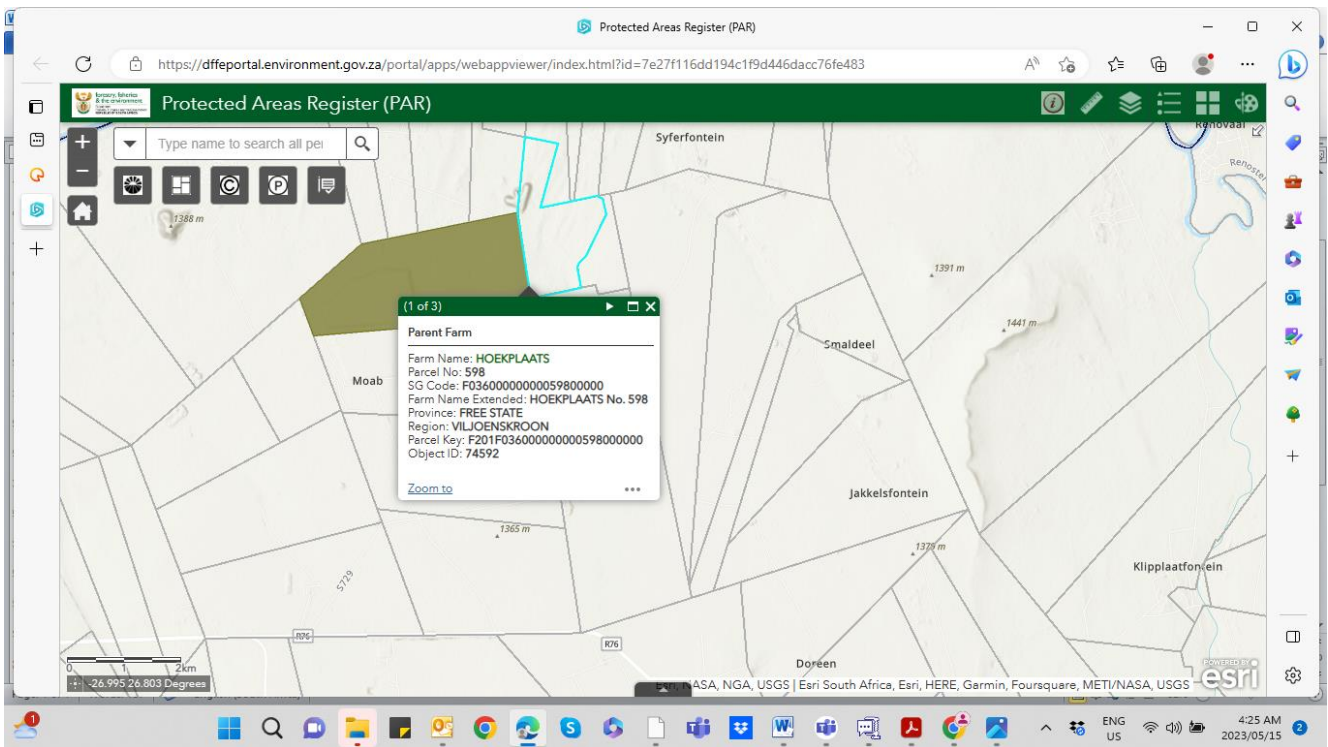
Vlakfontein Solar PV1

Location of the PV site in relation to the nearest legally Protected Area

According to the National Environmental Management: Protected Areas Act (Act 57 of 2003), the Minister must maintain a register called the Register of Protected Areas. A Register of Protected Areas was therefore developed for reporting and mapping purposes of PROTECTED AREAS and CONSERVATION AREAS in South Africa.

This Register uses a database called the Protected and Conservation Areas database (PACA) and comprises of all data required for the Register of Protected Areas (legally declared) as well as data on Conservation Areas (areas responsibly managed for biodiversity conservation but not legally declared as Protected Areas).

Confirmation of the protected area in terms of Section 50 of NEM: PAA has this been obtained from the Protected Areas Register Map. The relevant website is: https://egis.environment.gov.za/protected_and_conservation_areas_database



The proposed PV site is situated approximately 5km east of the Mispah Game Farm as per GE map below.

