

# Biotechnology & Environmental Specialist Consultancy cc

(East London & Durban)

*Environmental & Business Solutions*



PO Box 8241, Nahoon, 5210, East London, South Africa  
9 Douglas Road, Vincent, 5247, East London, South Africa  
Telephone 043 726 4242; Facsimile: 043 726 3199  
E-mail: [info@besc.co.za](mailto:info@besc.co.za); Website: <http://www.besc.co.za>



BESC



**Head Office - East London**

PO Box 8241, Nahoon, 5210, East London, South Africa  
9 Douglas Road, Vincent, 5247, East London, South Africa  
Telephone 043 726 6200/4242/5766; Facsimile: 043 726 3199  
E-mail: [info@besc.co.za](mailto:info@besc.co.za); Website: <http://www.besc.co.za>

**Durban**

Physical & Postal Address: 590 Clare Road, Clare Estate, Durban, South Africa, 4091  
Telephone: +27 (0)31 269 1601; Mobile: +27 (0)83 648 2967; Facsimile: +27 (0)86 537 9397  
E-mail: [nishal@gmail.com](mailto:nishal@gmail.com); Website: <http://www.besc.co.za>

BESC

# Biotechnology & Environmental Specialist Consultancy cc

## Leaders in Industrial Ecology, Environmental Site Assessments & Environmental Management Systems

### Company Background

**BESC** is a world-class professional practice, which was established in 1995 to fulfill the growing demand by industry and corporate business for professional expertise in Safety, Health & Environmental Management. We are widely recognized as leaders in Industrial Ecology, Environmental Site Assessments & Safety, Health & Environmental Management Systems. We are committed to providing industry and the corporate business sector with expertise in Safety, Health & Environmental Management within the framework of modern business principles, in order to overcome the challenges of 21st century. Although our work area is primarily based in Southern Africa, we have/are working with companies in Central, Eastern and Western Africa and Eastern Europe.

### Services

#### Safety, Health & Environmental Management & Sustainability

**Environmental Management Systems (ISO 14001)** - BESC has consulted to several large international companies and assisted them in the design and implementation of Environmental Management Systems based on the requirements of ISO 14001. We have the expertise and track record for developing tailor-made Environmental Management Systems based on three dimensional risk assessment modules, that not only improve environmental performance but that create a basis for corporate reporting and triple bottom line functionality.

**Safety & Health Management Systems (OHSAS 18001 and ILO 2000)** - BESC has consulted to several large international companies and assisted them in the design and implementation of Safety & Health Management Systems based on the requirements of OHSAS 18001. We have the expertise and track record for developing tailor-made Safety & Health Management Systems based on three dimensional risk assessment modules.

**Safety, Health & Environmental Auditing** - BESC has a proven track record in conducting high level SHE audits to a greater degree of detail than a certification audit. Our competency in the industrial sectors covers almost all European Accreditation Scopes.

**Environmental Due Diligence Auditing** - BESC has the capacity and experience in undertaken comprehensive Environmental Due Diligence Audits, and where necessary these can be extended to include the full Due Diligence Assessment (Financial through to Technical).

**Safety, Health & Environmental Performance Evaluation** - In order to ascertain the level of Safety, Health & Environmental performance, we are able to evaluate to level of performance against any recognised standard.

**Corporate Safety, Health & Environmental Reporting** - BESC can produce high quality Corporate Reports using the latest GRI Guideline companies of any size and complexity.

**Corporate, Safety, Health & Environmental Policy & Strategy** - BESC has the capacity for assisting companies in developing Safety, Health & Environmental Policies and developing short, medium and long term strategies to take the company into the 21 century.



## Environmental Assessment

**Environmental Site Assessment** - BESC undertake Environmental Site Assessments for industrial real estate in accordance with the standard procedures prescribed by the American Society for Testing & Materials and the US Environmental Protection Agency. Only accredited and internationally accepted laboratories are used for environmental sample analysis.

**Environmental Impact Assessment** - BESC has undertaken in excess of 350 Environmental Impact Assessments in accordance with published legislation. Topics of assessment range from telecommunication networks, electrification networks, water supply and roads, resort development, and industrial application such as sewage works, ammonia refrigeration plants, chlorine gas facilities, bulk fuel depots and mining.

**Strategic Impact Assessment** - The Strategic Impact Assessment process can be used to assess a proposed policy, plan or programme that has already been developed; or it can be used to develop, evaluate and modify a policy, plan or programme during its formulation.

**Public Participation** - Usually forming part of the Environmental Impact Assessment process, BESC can facilitate Public Participation in order to ascertain the particular needs or concerns of Interested & Affected Parties.

**Construction & Engineering Management Plans** - The implementation of Safety, Health and/or Environment Management Programmes into the construction and engineering sector requires a special understanding of practical application and targets. BESC has prepared many programmes to support effective Safety, Health and/or Environment Management in the construction and engineering sector

**Environmental Management Programme Reports** - BESC has prepared Management Programme Reports for mines, quarries, borrow pits.

**Environmental Management Plans** - BESC has prepared and directed Environmental Management Plans for the implementation and management of requirements specified in Records of Decisions authorising activities listed undertake the Environmental Impact Assessment regulations.

## Pollution Assessment

**Desk-top and feasibility studies** - BESC can prepare desk-top studies of actual or potential environmental pollution events that are likely to occur in any particular industrial sector. Risk to key environmental receptor is also assessed.

**Environmental Risk Assessment** - BESC has developed an in-house 3-dimensional risk assessment methodology, which we utilise in determining event risk to the environment. We also utilise other US EPA approved methodologies for other risk assessment specific needs.

**Environmental Site Pollution** - BESC has undertaken many geohydrological based site assessment and risk assessment of industrial pollution by hydrocarbons, heavy metals and other contaminants.

**Remediation, reclamation and regeneration strategies** - BESC advises on best method for clean-up or rehabilitation of sites which have been polluted.

## Other Specialist Services

**Greenhouse Gas Assessment** - BESC has capacity and expertise for assessment of greenhouse gas emission from any industrial sector.

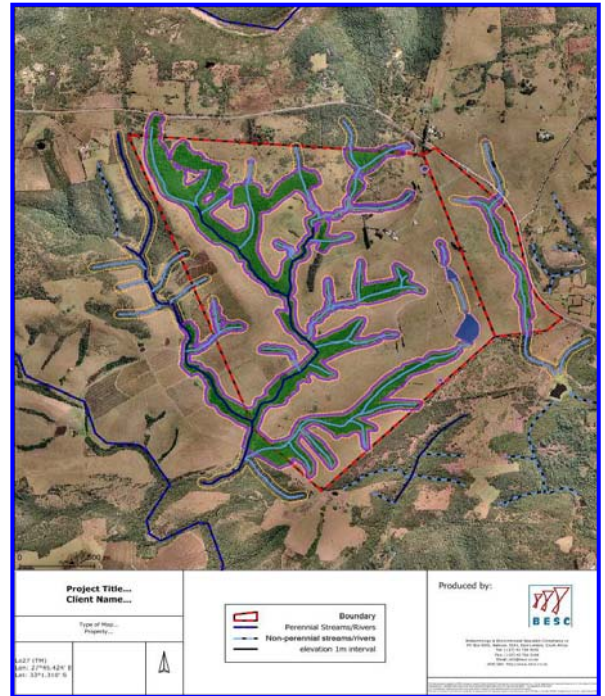
**Marine & Estuarine Ecology** - BESC has a niche skill for undertaking environmental impact assessment and developing management plans for the marine, coastal and estuarine environments

**Expert Witness for Environmental Litigation** - BESC have the competency and recognised professionalism to serve as expert witness in industrial environmental cases.



**Manifold 8: Geographic Information System - BESC** operates Manifold GIS to map environmental characteristics and impacts. Our output files can be utilised by other professional team members such as town planners, architects and engineers for their further planning purposes. We have large databases containing high resolution aerial photographs, environmental data, contours, farm and erf boundaries, conservation data, geological data, infrastructural data, etc, etc from which we can rapidly draw.

**TurboCAD** - BESC uses TurboCAD 15. We can receive and distribute CAD files in all the major formats (DWF, DWG, DXF and many others). We can therefore provide direct input into architectural drawings and landscape layouts, as well as to review engineering type drawings. Our software also permits us to produce photorealistic rendering and visualisations.



**CanVis:** Visual Simulation Software- BESC utilises CanVis as a tool for Visual Impact Assessments for new developments and infrastructure. Simulations can range from drawings and digitally edited images to complex models and animations. In natural resource planning, being able to simulate a proposed change can be a powerful tool when working with landowners and other decision-makers.



### Project Management

We have extensive project management experience, and are able to lead and manage projects from conception through to completion. All our projects are run on project management schedules.

## Safety, Health & Environmental Management

Our proven record of accomplishment includes the following:

- BESC are appointed as Safety, Health & Environmental Consultants to **Ursus Breweries** (A division of **SAB Miller Plc**), at four breweries in Romania.
- BESC are appointed as Safety, Health & Environmental Consultants to **Pizeňský Prazdroj, a.s.** (A division of **SAB Miller Plc**), at three breweries in the Czech Republic.
- BESC are appointed as Safety, Health & Environmental Consultants to **Dreher Sörgyarak Zrt** (A division of **SAB Miller Plc**), at their brewery and distribution network in Hungary.
- BESC are appointed as Environmental Consultants to **PG Bison (Ugie)**
- BESC are appointed as Safety, Health & Environmental Consultants to **Coca-Cola Company** (Southern Africa).
- BESC are appointed as Safety, Health & Environmental Consultants to **Coca-Cola Fortune** (South Africa).
- BESC are appointed as Environmental & Quality Management Systems Consultants to **BHP Billiton's MOZAL Aluminium Smelter** in Maputo, Mozambique.
- BESC are the exclusive Safety, Health & Environmental Consultants to **Mopani Copper Mines Plc (Zambia)**, responsible for the establishment and implementation of the integrated Safety, Health & Environmental Management Systems
- BESC were appointed as Environmental Management Consultants to **Lonmin Metallurgical Services (Lonmin Plc, United Kingdom)** at their Smelter and Base Metal Refinery Complex and Precious Metal Refinery for the design and implementation of the ISO 14001 Environmental Management System
- BESC has undertaken extensive Environmental Site Assessments/Pollution Assessment (ESA I & II) for a large number of South African industries (details confidential).
- BESC has undertaken in excess of 300 Environmental Impact Assessments (EIA) in terms of the EIA Regulations published under the Environment Conservation Act and/or the National Environmental Management Act. Recent/Current key EIA projects include:
  - **ABSA Dev Co / Bigen Africa** - Albany regional Water Services Scheme
  - **ABSA Dev Co / Bigen Africa** - Port Alfred Waste Water Treatment Works
  - **ABSA Dev Co / Bigen Africa** - Thornhill Housing Project
  - **Altivex 103 (Pty) Ltd** - Kidds Beach Golfing Estate (18 Hole Golf Course)
  - **Amatole Green Power - Gas extraction** - Electricity Generation (Roundhill, King Williams Town & Second Creek Landfill Sites)
  - **Edcot Trust/Kempston Leisure** - Homeleigh Motor City
  - **AfricoResourcs/IMF** - Kalakundi Copper & Cobalt Mine, Democratic Republic of Congo
  - **Island View Storage** - Bulk Fuel Storage Facilities (Richards Bay, Durban, Cape Town)
  - **Sugar Creek Trading** - Rockclyffe Shopping Mall
  - **Thynk Property Partners** - Gonubie Lifestyle Mall
  - **True Group Building** - King Williams Town/Zwelitcha Mall & Office Park
  - **Amatole Green Power** - Three Landfill Gas Extraction Project (CDM Projects)

### Professional Associations

- South African Council for Natural Scientific Professions (Professional Environmental Scientist)
- South African Institute of Ecologists & Environmental Scientists (Professional Environmental Scientist)
- Certification Board for Environmental Assessment Practitioners of South Africa
- International Association of Impact Assessors
- Royal Society of South Africa
- South African Association of Botanists
- Phycology Society of South Africa

### Contact Information

Dr Malcolm Logie

PO Box 8241, Nahoon, 5210, East London, South Africa  
9 Douglas Road, Vincent, 5247, East London, South Africa

Telephone 043 726 4242; Facsimile: 043 726 3199

E-mail: [info@besc.co.za](mailto:info@besc.co.za); Website: <http://www.besc.co.za>

### Company Structure & Equity

Company structure and equity are described in the table below:

Function	Gender	Equity Status	Ownership
Management	Male x 1		100%
Professional Services	Male x 3 Female x 1	Female x1	
Administration	Female x 2	Female x 1 PDI Female x 1	

BESC qualifies as a **Level 4 BEE complaint service provider**.

### Professional Indemnity Insurance

BESC has world wide Professional Indemnity Insurance (excluding USA and Canada) with Glen Rand MIB to a limit of ZAR 1 000 000.00. The insurance covers all our consulting services.

### Organisational Capacity

BESC was established in 1995 and the company is different from other safety, health & environmental consultancies in that its services are aimed primarily at corporate industry and the industrial sector.

All reports and documentation are managed in the *Microsoft Office 2003 / 2007 Professional Suite™*.

*McAfee Internet Suite 2010™* and *MDaemon Security Plus™* protect all reports and computers systems, and is kept up-to-date on a daily basis.

In order to ensure security of information contained in reports, all reports issued from our good office are compiled in *Adobe Acrobat 7.0 / 9.0 Professional™* as secured and digitally certified PDF documents.

BESC is an authorised distributor of *Adobe Reader™*.



**Dr. Malcolme Logie**  
**Principal and Managing Director**  
**MSc (Botany); PhD (Biotechnology), Rhodes**

*Malcolme Logie has over 15 years experience in the field of Environmental Management with extensive experience in the fields of Environmental Impact Assessments; Environmental Site Assessments; Safety Health & Environmental Management Systems and Auditing; and Industrial Environmental Management in South Africa, Mocambique, Namibia, Angola, Ghana, Zambia, Egypt, The Czech Republic, The Slovak Republic, Hungary, Poland and Romania.*

**Current Employment**

- Owner/Managing Director - Biotechnology & Environmental Specialist Consultancy (1995 - present)

**Education**

- PhD (Biotechnology) 1995
- MSc (Botany), 1992
- BSc Honours (Botany), 1990
- BSc (Plant Science & Biochemistry), 1989

**Professional Affiliations & Registrations**

- Registered as a Professional Natural Scientist (Environmental Scientist) with the South African Council of Natural Scientific Professions (SACNASP).
- Certification Board of Environmental Assessment Practitioners of South Africa
- Professional Member of the South African Institute of Ecologists and Environmental Scientists (SAIE&ES)
- International Association of Impact Assessors (IAIASA)
- Royal Society of South Africa
- South African Association of Botanists (SAAB)
- Phycology Society of South Africa (PSSA)
- South African Auditor & Training Certification Association (SAATCA) – EMS Verification Auditor
- Bureau Veritas International – Lead EMS Auditor

**South African Council of Natural Scientific Professions**

- Malcolme is a member of the Education Committee of South African Council of Natural Scientific Professions (SACNASP) for the registration of Professional Natural Scientist.

**Rhodes University Investec Schools of Business**

- Malcolme served on the Advisory Board for the Rhodes University Investec Schools of Business that provided advice and directs the strategic planning and continual development of the business school (2004-2008).
- Malcolme lectured at the MBA class at the Rhodes University Investec Schools of Business on safety, health environmental management in the industrial and business environments (2004-2008).

**Fields of Competence**

Malcolme has wide-ranging industrial environmental experience primarily in the following sectors:

- Automotive sector
- Beverages
- Chemicals & chemical products
- Civil and mechanical engineering
- Electricity & water supply
- Metals refining & processing
- Mining & quarrying
- Pulp & paper
- Telecommunications

Malcolme's project experience largely falls into the following broad areas:

- Environmental Impact Assessments:
  - Malcolme has been the project leader on/undertaken over 300 Environmental Impact Assessments from 1995 to present.
  - Malcolme has managed a broad range of environmental impact assessments ranging from: industrial facilities, telecommunication networks, electrification networks, transportation infrastructure, residential and commercial real estate, solid waste sites, waste water treatment and water supply.
- Safety, Health & Environmental Management Systems
  - Malcolme's experience includes management system design and implementation and also certification audits across a wide range of industrial sectors in South Africa, Mocambique, Angola, Zambia, The Czech Republic, The Slovak Republic, Hungary, Poland and Romania.
- Environmental Site Assessments
  - Malcolme has been the project leader on many Phase I and II Environmental Site Assessments that have been undertaken in accordance with the ASTM standards, at several industrial facilities in South Africa, Mocambique and Romania.
- Environmental Auditing

- Malcolme's auditing experience includes ISO 14001, OHSAS 18001 and ISO 9001 certification level audits; legal compliance, and environmental performance audits across a wide range of industrial and mining sectors in South Africa, Mocambique, Namibia, Angola, Ghana, Zambia, Egypt, The Czech Republic and Romania.
- Dr Malcolme Logie has in excess of 9300 hours of Safety, Health & Environmental Management Systems Auditing in South Africa, Mocambique, Namibia, Angola, Ghana, Zambia, Tanzania, Egypt, The Czech Republic, The Slovak Republic, Hungary, Poland and Romania.

Malcolme serves on the following National Committees:

- Technical Committee TC 207/SC1 - ISO 14001 - Environmental Management Systems
- Technical Committee TC 207/SC3 - ISO 14001 - Environmental Labelling
- Technical Committee TC 177 - OHSAS 18001 - Safety & Health Management Systems
- Technical Committee TC 248 - Sustainable Criteria for Bio-energy
- SANS 969 - Clean-up of dangerous goods incidents on roads

Malcolme is widely regarded as a Leading Authority in Safety, Health, Environment, Risk Management and Quality Management:

- ISO 9001 - Quality Management Systems
- ISO 14001 - Environmental Management Systems
- ISO 22000 - Food Safety Management
- ISO 31000 - Risk Management Systems
- OHSAS 18001 - Safety & Health Management
- Environmental Impact Assessments
- Environmental Site Assessment
- Industrial Environmental Management

### Key Projects

Recent key projects include:

#### South African Breweries Millers (SAB Miller)

- Ursus Breweries, Romania (SAB Miller), where Malcolme was responsible for the development and implementation of a Safety, Health & Environmental Management System at four breweries and a depot.
- Pížeňský Prazdroj, Czech Republic (SAB Miller), where Malcolme was responsible for the development and implementation of an integrated Safety, Health & Environmental Management System at three breweries.
- Dreher Sörgyárak Zrt, Hungary (SAB Miller), where Malcolme is responsible for the development and implementation of an integrated Safety, Health & Environmental Management System at this brewer.
- Ibhayi Brewery (Port Elizabeth) where an Environmental Management System was designed and implemented at this new state-of-art brewery. During the construction of the brewery Malcolme reviewed all the plans to ensure environmental sustainability

#### BHP Billiton (MOZAL), Mocambique

- Malcolme designed and co-ordinated the implementation of the Environmental and Quality Management System at this BHP Billiton aluminium smelter in Maputo, and continues to service this organization environmental management needs.

#### Coca-Cola Company

- Malcolme was the appointed SHE Management System Consultant to Coca-Cola Company Southern Africa, responsible for advising of the implementation of a SHE MS compliant with ISO 14001:2004, OHSAS 18001:1999 and the Coca-Cola Worldwide E3 programme.
- Malcolme guided the process for the development and implementation of an integrated SHE Management System at Coca-Cola Fortune (Polokwane & Bloemfontein). The management system is based on the requirements of ISO 14001:2004 and OHSAS 18001:1999.

#### Lonmin Platinum, South Africa

- Malcolme co-ordinated the design and implementation of the Environmental and Quality Management System at Lonmin's Western Platinum Refinery in Johannesburg, and also revised and re-establish the EMS at this platinum producers smelter and base metal refinery near Rustenburg.

#### Dorbyl Automotive Technologies, South Africa.

- Malcolme was the exclusive environmental management consultant to this automotive components producer. The production facilities include: foundries, forges, machine shops and manufacturing units.

#### Telkom SA Ltd, South Africa.

- Malcolme was instrumental in establishing the internal environmental assessment guidelines for this national telecommunication service provider, for the placement of telecommunication masts and associated infrastructure. He has also undertaken more than 120 environmental impact assessments of individual telecommunication masts throughout South Africa.

#### Environmental Site Assessments

- Malcolme has been the project leader on many Phase I and II ESA's that have been undertaken in accordance with the US ASTM standards, at several industrial facilities in South Africa, Mocambique and Romania

#### SHEQ Management Systems Auditing

- Malcolme has in excess of 9300 hours of SHEQ Management Systems auditing. He has audited companies in South Africa, Mocambique, Namibia, Angola, Ghana, Zambia, Egypt, The Czech Republic, The Slovak Republic, Hungary, Poland and Romania.

#### Environmental Impact Assessments:

- Malcolme has been the project leader on over 300 Environmental Impact Assessments from 1995 to present. Recent Environmental Impact Assessments include:
  - Albany regional Water Services Scheme
  - Port Alfred Waste Water Treatment Works
  - Presidential Project - Thornhill Housing Development
  - Homeleigh Motor City & Arnoldson Farm Sub-Divisional Area
  - Kalakundi Copper & Cobalt Mine, Democratic Republic of Congo
  - Island View Storage Bulk Fuel Storage Facilities (Richards Bay, Durban, Cape Town)

- o Rockclyffe Shopping Mall
- o Gonubie Lifestyle Mall
- o King Williams Town/Zwelitsha Mall & Office Park
- o Amatole Green Power – Three Landfill Gas-Electricity Generation Extraction Project (CDM Projects)
- o Kidds Beach Golf Estate
- o National Ports Invasive Plants Assessment
- o Rathwick Bulk Services

Malcolme has competency though experience, BV and TUV in the following Industrial Sectors:

1	Agriculture, forestry, fisheries	20	Ship building
2	Mining & quarrying	21	Aerospace
3	Beverages & foodstuff industries	22	Other transport equipment (automotive, rail)
4	Textile industries	23	Manufacturing (not classified elsewhere)
5	Leather & leather products	24	Recycling
6	Wood industries	25	Electricity supply
7	Pulp, paper & paper products	26	Gas supply
10	Mineral-oil processing	27	Water supply
12	Chemicals & chemical products	28	Construction
13	Pharmaceuticals	30	Hotels & restaurants
14	Rubber & plastic goods	31	Transport & communication
15	Glass, ceramics, processing of minerals & ores	34	Research & development
16	Production of cement, lime, gypsum & concrete, lime and gypsum products	35	Business services
17	Metals refining & processing, & production of metals	37	Education
18	Mechanical engineering	39	Other social services

BESC

**Ms. Lee-Anne Proudfoot**  
**Senior Environmental Consultant**  
**MSc (Marine Biology), Rhodes**

*Lee-Anne Proudfoot has experience in the fields of Marine and Coastal Ecology, Geographical Information Systems (GIS), Environmental Impact Assessments, Environmental Site Assessments, Environmental Management Plans, Environmental Auditing, Visual Impact Assessments, Aquatic Impact Assessments and Project Management.*

Lee-Anne's project experience includes:

**Environmental Impact Assessments**

Lee-Anne assisted in and managed a broad range of scoping & environmental impact assessments ranging from: agri-industrial & industrial facilities, residential & resort developments, golf estates, renewable energy technologies, storm water management, water supply, desalination and sewage.

**Environmental Site Assessments**

Lee-Anne has experience in site assessments, field sampling & monitoring, permit applications and in the compilation of reports for prospective land buyers.

**Environmental Management Plans**

Lee-Anne has experience in compiling and monitoring the Environmental Management Plans for a wide range of developments.

**Environmental Auditing**

Lee-Anne has experience in auditing the environmental compliance of and compiling environmental auditing reports.

**Geographical Information Systems (GIS)**

Lee-Anne has experience in using ArcView, Idrisi and Manifold software in assessing & producing maps, site plans, aerial photographs, etc.

**Visual Impact Assessments (VIA)**

Lee-Anne has experience in conducting VIA's and compiling VIA reports.

**Aquatic Impact Assessments (AIA)**

Lee-Anne has experience in conducting SASS5 Bio-rapid assessments for Aquatic Impact Assessments.

**Waste Licensing**

Lee-Anne has experience in Waste License Applications

**Project Management**

Lee-Anne has experience in managing projects for a wide range of developments.

**Professional Affiliations & Registrations**

- Registered as a Professional Natural Scientist (Environmental Scientist) with the South African Council of Natural Scientific Professions (SACNASP).
- International Association of Impact Assessors, South Africa

**Fields of Competence**

- Environmental Impact Assessments
- Environmental Site Assessments
- Environmental Management Plans
- Environmental Auditing
- Geographical Information Systems (GIS)
- Visual Impact Assessments (VIA)
- Aquatic Impact Assessments (AIA)
- Waste License Applications
- Project Management

**Education**

- M.Sc. (Marine Biology), Rhodes, 2006
- B.Sc. Honours (Marine Biology), Rhodes, 2003
- B.Sc. (Zoology and Ichthyology), Rhodes, 2002

**Employment Record**

- Biotechnology & Environmental Specialist Consultancy cc: 2006 – Present:

**Key Projects**

**EDCOT Trust**

Lee-Anne is currently undertaking the basic environmental impact assessment and managing the environmental authorization process for the proposed consolidation and rezoning of Farm 640/01 & Farm 640/29, East London, to a sub divisional area.

**African Dune Investments (Pty) Ltd**

Lee-Anne undertook the environmental impact assessment and managed the environmental authorization process for the proposed Woodlands Golf Estate.

**ABSA Development Company/Bigen Africa**

Lee-Anne was the project manager for the environmental management component of the Albany Regional Water Services Project and conducted the environmental impact assessment

**African Dune Investments (Pty) Ltd**

Lee-Anne managed the scoping assessment for a proposed Wind Turbine Farm.

**Amatola Green Power (Pty) Ltd**

Lee-Anne managed and conducted the environmental impact assessment for the proposed extraction of landfill gas from three BCM Landfill Sites for the purposes of electricity generation.

**The Environmental Law Consultancy**

Lee-Anne assisted in the compilation of a Legal Register for a Chrome Tanning Salts Plant in Merebank, with her focus pertaining to the relevant Occupational Health and Safety legislation.

**KRAFT Foods SA**

Lee-Anne reviewed and assisted in the preparation of an Environmental Impacts and Aspects Register, inclusive of the significance assessment and proposed mitigation/management strategies for all the Kraft Foods SA – Tunney Plant's activities for purposes of implementation of an Environmental Management System.

**Element Consulting**

Lee-Anne is currently undertaking the environmental impact assessment and environmental management plan for the construction of roads and utilisation of borrow pits in the Eastern Cape

**SAB (PTY) LTD**

Lee-Anne conducted the phase 1 Environmental Site Assessment for a prospective land purchase.

**International Finance Corporation**

Lee-Anne co-ordinated and reviewed the specialist environmental studies required for the environmental impact assessment for the proposed Kalakundi Copper & Cobalt Mine in the Democratic Republic of Congo.

**Carpano Investments (Pty) Ltd**

Lee-Anne was responsible for the environmental management component of the Spatial Development Framework for the proposed Rock Cliff development area south-east of East London

**Kempston Leisure (Pty) Ltd**

Lee-Anne managed the environmental authorization process for a proposed motor city

**Edcot Trust (Pty) Ltd**

Lee-Anne managed the environmental authorization process for a proposed motor city

**Kempston Leisure (Pty) Ltd**

Lee-Anne is the Environmental Control Officer for the proposed motor city development.

**Wild Coast Ski Boat Club**

Lee-Anne undertook the renewal application for a boat launching permit and prepared the requested environmental management plan for the Hole in the Wall Launch Site

**Wild Coast Fishing Co-operative**

Lee-Anne conducted and managed the environmental authorization process for a proposed aquaculture facility

**Wild Coast Fishing Co-operative**

Lee-Anne conducted and managed the scoping assessment for a proposed fish processing factory

**Alvitex 103 (Pty) Ltd**

Lee-Anne assisted on the environmental impact assessment for the proposed resort development.

**Rakel (Pty) Ltd**

Lee-Anne managed the environmental impact assessment for desalination plants servicing the proposed resort developments

**Alvitex 103 (Pty) Ltd**

Lee-Anne managed the environmental impact assessment for desalination plants servicing the proposed resort developments

**Leisure Homes for Senior Citizens**

Lee-Anne managed the environmental authorization process for the proposed extension of a retirement village

**Fire Ring**

Lee-Anne was involved in the compilation of a site assessment report for the prospective purchasing of land

**Blue Beacon Investments (Pty) Ltd**

Lee-Anne conducted and managed the environmental authorization process for the Connemara Housing Complex

**Buffalo City Municipality – Waste Management**

Lee-Anne assisted in the environmental audit process on the Buffalo City Regional Waste Disposal Site, focussing on issues such as operations and water-quality monitoring.

**Buffalo City Development Agency**

Lee-Anne was responsible for the environmental assessment component of the Nahoon Mouth and Sports Precinct Local Spatial Framework Plan.

**Southern Palace Investments 414 (Pty) Ltd**

Lee-Anne conducted and managed the scoping and environmental impact assessment for environmental authorization for a proposed mixed use development for the purposes of a hospital, retirement village and church.

**Nuffield Trust**

Lee-Anne conducted and managed the environmental impact assessment for the environmental authorization of a proposed Yellowwood Heights Residential Development

**Riverleigh VII**

Lee-Anne conducted and managed the Scoping Assessment for a proposed mixed use development for the purposes of entry level residential, office and retail.

**True Group Building (Pty) Ltd**

Lee-Anne conducted and managed the environmental impact assessment for the environmental authorization of a proposed light industrial site.

**Mr. Conroy van der Riet**  
**Senior Environmental Consultant**  
**BSc Honours (Environmental Geography)**

*Conroy van der Riet has more than 4 years experience in the fields of Marine and Terrestrial Ecology, Geography, Geographical Information Systems (GIS), Mining, Environmental Impact Assessments, Environmental Site Assessments, Environmental Management Plans, Environmental Management Systems, Environmental Auditing, Visual Impact Assessments, Site Rehabilitation, Water Use Licensing, Waste Licensing and project management throughout South Africa.*

Conroy's project experience includes:

**Environmental Impact Assessments**

Conroy assisted in and managed a broad range of environmental impact assessments ranging from: agri-industrial & industrial facilities, residential & resort developments, golfing estates, informal settlement planning & formalisations, storm water management, water supply, desalinisation and sewage.

**Environmental Site Assessments**

Conroy has experience in many Phase I and II site assessments in accordance with ASTM Standards, SASS 5 freshwater aquatic systems assessments, field sampling & monitoring, permit applications and in the compilation of reports for prospective land buyers.

**Environmental Management Plans**

Conroy has experience in compiling and monitoring the Environmental Management Plans for a wide range of developments.

**Environmental Management Systems**

Conroy's experience includes Environmental Management System design and implementation, legal compliance audits, and risk assessments in compliance with relevant ISO Standards.

**Environmental Auditing**

Conroy's auditing experience includes ISO 14001, OHSAS 18001 and ISO 9001 certification level audits; legal compliance, and environmental performance audits across a wide range of industrial sectors in South Africa.

**Geographical Information Systems (GIS)**

Conroy has experience in using ArcView, Idrisi and Manifold software in assessing & producing environmental sensitivity maps, site plans, aerial photographs, satellite imagery, etc.

**Visual Impact Assessments (VIA)**

Conroy has experience in conducting VIA's and compiling VIA reports.

**Site Rehabilitation**

Conroy has experience in the rehabilitation of a variety of disturbed areas.

**Water Use Licensing**

Conroy has experience in a range of Water Use License application and related projects.

**Waste Licensing**

Conroy has experience in Waste License Applications for a range of projects

**Project Management**

Conroy has experience in managing projects for a wide range of developments.

**Professional Affiliations & Registrations**

- Registered as a Professional Natural Scientist (Environmental Scientist) with the South African Council of Natural Scientific Professions (SACNASP).
- International Association of Impact Assessors, South Africa

**Fields of Competence**

- Environmental Impact Assessments
- Environmental Management Plans
- Environmental Site Assessments
- Environmental Management Systems
- Environmental Auditing
- Geographical Information Systems (GIS)
- Visual Impact Assessments (VIA)
- Site Rehabilitation
- Water Use Licensing
- Waste Licensing
- Project Management

**Education**

- BSc Hons (Environmental Geography) NMMU, 2006
- BSc (Zoology and Geography) NMMU, 2005

**Employment Record**

- Biotechnology & Environmental Specialist Consultancy cc: 2006 – Present:

**Key Projects**

**PG Bison**

Conroy assisted in the preparation of an Environmental Aspects Register, inclusive on significance assessment and proposed mitigation/management strategies for all the PG Bison activities at the board plant in Ugie, Eastern Cape for purposes of implementation of an Environmental Management System.

**Kraft Foods SA**

Conroy conducted the Phase I Environmental Site Assessment in accordance with the ASTM standards, and assisted in the preparation of an Environmental Aspects Register, inclusive on significance assessment and proposed mitigation/management strategies for all the Kraft Foods SA – Tunney Plant's activities for purposes of implementation of an Environmental Management System.

**Goodyear SA**

Conroy managed the Scoping process for the proposed installation of Underground Storage Vessels at the Goodyear SA factory.

**Pragma Africa (Pty) Ltd**

Conroy managed the environmental authorization process for the removal of underground fuel storage vessels.

**Buffalo City Municipality – Waste Management**

Conroy assisted in the environmental audit process on the Buffalo City Regional Waste Disposal Site, focussing on issues such as construction, operations and air-quality monitoring.

**SANRAL**

Conroy is managed the environmental authorization process for the proposed improvement of National Route 02, Section 18 for the South African National Roads Agency Limited. Conroy is also managing the mining permit applications of the borrow pits for the proposed road improvement, and has been appointed to act as Environmental Control Officer for the implementation of the project.

**Bigen Africa (Pty) Ltd & Ndlambe Local Municipality**

Conroy managed the environmental authorization process for the proposed Port Alfred Waste Water Treatment Works upgrade project. Conroy has also been appointed to act as the Environmental Control Officer for the implementation of the project.

**Uhambiso**

Conroy managed the environmental authorization and Waste License Application process for the proposed Tsolo Waste Water Treatment Works upgrade project.

**Chris Hani District Municipality – Bulk Services**

Conroy is currently managing the environmental authorization and Waste License Application process for the proposed upgrading of the Bulk Services for the proposed Rathwick Development, Queenstown, inclusive of the Waste Water Treatment Works, Water Treatment Works, Stormwater and associated infrastructure.

**Chris Hani District Municipality – Water Supply**

Conroy is currently managing the environmental authorization process for the Water Supply Backlog projects in the Cluster 2 area of the Chris Hani District Municipality.

**Alvitex 103 (Pty) Ltd**

Conroy managed the environmental authorization process for a proposed golfing estate development and assisted in the environmental authorization for the sewage works servicing the proposed resort developments, and.

**African Dune Investments**

Conroy assisted in the environmental authorization for the proposed golf estate development.

**Thynk Property Partners (Pty) Ltd**

Conroy managed the environmental authorization process for the proposed retail & residential development.

**Eskom**

Conroy is currently managing the environmental authorization process for the proposed upgrading of the Qumbu Substation and associated infrastructure.

**Buffalo City Municipality – Planning and Economic Development**

Conroy managed the environmental authorization for various settlement planning & formalization projects in the Amathole district.

**The Diocese of Grahamstown**

Conroy managed the environmental authorization for the proposed rezoning and residential development of the St Lukes Mission Land.

**Bunker Hills Investments (Pty) Ltd**

Conroy managed the environmental management plan for the proposed residential development.

**Rakel (Pty) Ltd**

Conroy assisted in managing the environmental authorization for the proposed residential development and assisted in the environmental impact assessment for the proposed desalination plant servicing the proposed residential development.

**Rapitrade (Pty) Ltd**

Conroy assisted in managing the environmental management plan for the proposed residential development and managed the applications to the South African Heritage Resources Agency (SAHRA) and the Department of Water Affairs & Forestry.

**Golden Falls (Pty) Ltd**

Conroy assisted in the environmental authorization and the environmental management plan for the proposed residential development.

**Beautiful Connections (Pty) Ltd**

Conroy managed the environmental authorization for a proposed wildlife resort in the Queenstown area and the proposed development of Eco-Type chalets in the East London area.

**Riverleigh VII cc**

Conroy managed the environmental authorization process for the proposed warehousing and light industrial manufacturing processes developments.

**Purple Moss 29 (Pty) Ltd**

Conroy managed the rehabilitation of the Quenera River bank on the site and the environmental authorization process for the proposed township establishment consisting of business, mixed use and residential areas.

**Silicon Smelters (Pty) Ltd (FerroAtlantica)**

Conroy managed the environmental impact assessment process and CAPCO permit applications for various charcoal burners in the East Cape, West Cape, Free State, North-West, Limpopo and Gauteng Provinces.

**Wild Coast Fishing Co-operative**

Conroy assisted in the environmental authorization for the proposed fish works factory.

**ELGC**

Conroy managed the EIA Process and prepared the rehabilitation management plan for the proposed realignment of the 6<sup>th</sup> fairway & minor upgrades in order to upgrade the East London Golf Club (ELGC).

**Mr. Nishal Sewruttan**  
**Senior Associate**  
**BSc - Environmental Management (Chemistry)**

*Nishal Sewruttan has experience in the fields of Environmental Impact Assessments (EIAs); Environmental Site Assessment; SHE Management Systems; and Contamination Assessment and Remediation.*

**Education**

- BSc Environmental Management (Chemistry), 2006

Nishal's project experience includes:

**Environmental Impact Assessments**

Managed a broad range of environmental impact assessments including industrial facilities, residential developments, resort developments, shopping malls, and office parks.

**Environmental Site Assessments**

Managed and assisted in environmental site assessments for existing industrial sites as well as proposed development sites.

**Safety, Health, and Environmental Management Systems**

SHE management system design and implementation, legal compliance audits, and risk assessments.

**Contamination Assessment and Remediation**

Managed and assisted in the contamination assessment and remediation of over 30 hydrocarbon contaminated sites.

**Key Projects:****Retail and Commercial Petroleum sites, Western Cape**

Managed and assisted in the contamination assessment and remediation of over 30 hydrocarbon contaminated sites which included filling stations, commercial sites, and fuel depots.

**Southern Palace Investment 414 (PTY) Ltd, Cove Rock, East London**

Managed the Scoping/EIA process for the proposed golf estate and managed the Basic Assessment (BA) process for the proposed Hotel and Clubhouse.

**Thornhill Integrated Housing Development, Port Alfred – ABSA DEVCO**

Managed the Scoping/EIA process and acted as Environmental Control Officer (ECO) for the integrated housing development.

**Roundhill Regional Waste Disposal Site, Berlin**

Conducted the environmental legal compliance/operational permit audit for the waste disposal site.

**Tsolo Wastewater Treatment Works, Eastern Cape**

Managed the Scoping/EIA process for the proposed wastewater treatment works

**Bradbury Trading 35 (Pty) Ltd, Cove Rock, East London**

Managed the Scoping/EIA process for the proposed shopping mall.

**Nelbut Properties cc, Quenera, East London**

Managed the BA process for the rezoning and development of Farm 807/3, 4, & 18 (Shadow Park), Quenera.

**True Group (PTY) Ltd, King Williams Town**

Managed the BA process for the office and retail development.

**Fowler Trust, Cove Rock, East London**

Managed the BA process for the warehousing development.

**Island View Storage Ltd, Durban**

Managed the Scoping/EIA process for the expansion of the bulk liquid storage facility.

**Island View Storage Ltd, Durban**

Managed the Phase I and II Environmental Site Assessment for the bulk liquid storage facility.

**Mopani Copper Mines, Zambia**

Responsible for advising the implementation of a Safety, Health & Environmental Management System.

**Coca-Cola Fortune, Polokwane**

Assisted in preparing an Environmental Legal Compliance audit.

**Coca-Cola Fortune, Bloemfontein**

Assisted in preparing an SHE Risk Assessment.

**Engen Oil Refinery, Durban**

Assisted in preparing annual emission reports and in the development of a hazardous waste disposal documentation control procedure.





END

BESC