

# Idokhumenti Yolwazi Lwesizinda

---




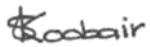

**Idokhumenti Yolwazi Lwesizinda emayelana nomklamo Ohlongozwayo Wokushintsha Ipayipi Lamanzi LakwaNyuswa, uMasipala wendawo eRay Nkonyeni, UMasipala wesifunda waseUgu, KZN.**

**Iphrojekthi kamasipala wesifunda waseUgu**

**Mbasa 2022**

## INCAZELO YEDOKHUMENTI

- Iklayenti / Umfakisicelo:** UMasipala wesifunda waseUgu
- Igama lombiko:** Idokhumenti Yolwazi Lwesizinda emayelana nomklamo Ohlongozwayo Wokushintsha Ipayipi Lamanzi LakwaNyuswa, uMasipala wendawo eRay Nkonyeni, UMasipala wesifunda waseUgu, KZN
- Igama Lombiko:** Idokhumenti Yolwazi Lwesizinda
- Igama lePhrojekthi:** Iphrojekthi Yokushintswa Kwepayiphi Lamanzi kwaNyuswa
- Inombolo lePhrojekthi:** WG1. 22016
- Inguqulo:** 1
- Ihlanganiswe futhi yagunyazwa ngu:**

Ihlanganiswe ngu:	Usuku	Isiginesha
Ntokozi Ntshobeni <i>Umhloli Wemvelo</i>	Mbasa 2022/ eThekwini	
Ibuyekwe ngu:		
Simitha Koobair - Reg. EAP (EAPASA) <i>Umhloli Wemvelo</i>	Mbasa 2022/ eThekwini	
Kugunyazwe ngu:	Usuku	Isiginesha
Kushela Naidoo – Pr.Sci.Nat ; Reg. EAP (EAPASA) <i>Umqondisi Wephrojekthi</i>	Mbasa 2022/ eThekwini	

### KUHLANGANISELWE:

#### UMasipala wesifunda e-Ugu

Mnu. Rowan Mlambo (Umphathi: WRM)  
185 Musgrave Road  
Harding, 4680  
Ugcingo: 27 (0)39 688 3441  
Iselula: +27 (0) 72 176 8549  
I-imeyili: [Rowan.Mlambo@ugu.gov.za](mailto:Rowan.Mlambo@ugu.gov.za)

### KUHLANGANISWE NGU:

#### Wallace & Green (Pty) Ltd

Ikheli: Suite 408, Strauss Daly Place,  
41 Richefond Circle, Ridgeside Office  
Park, Umhlanga, 4319.

Ugcingo: +27 (0)31 563 4466

Ifeksi: +27 (0)86 613 8535

I-imeyili: [simitha@wallaceandgreen.co.za](mailto:simitha@wallaceandgreen.co.za)

[www.wallaceandgreen.co.za](http://www.wallaceandgreen.co.za)

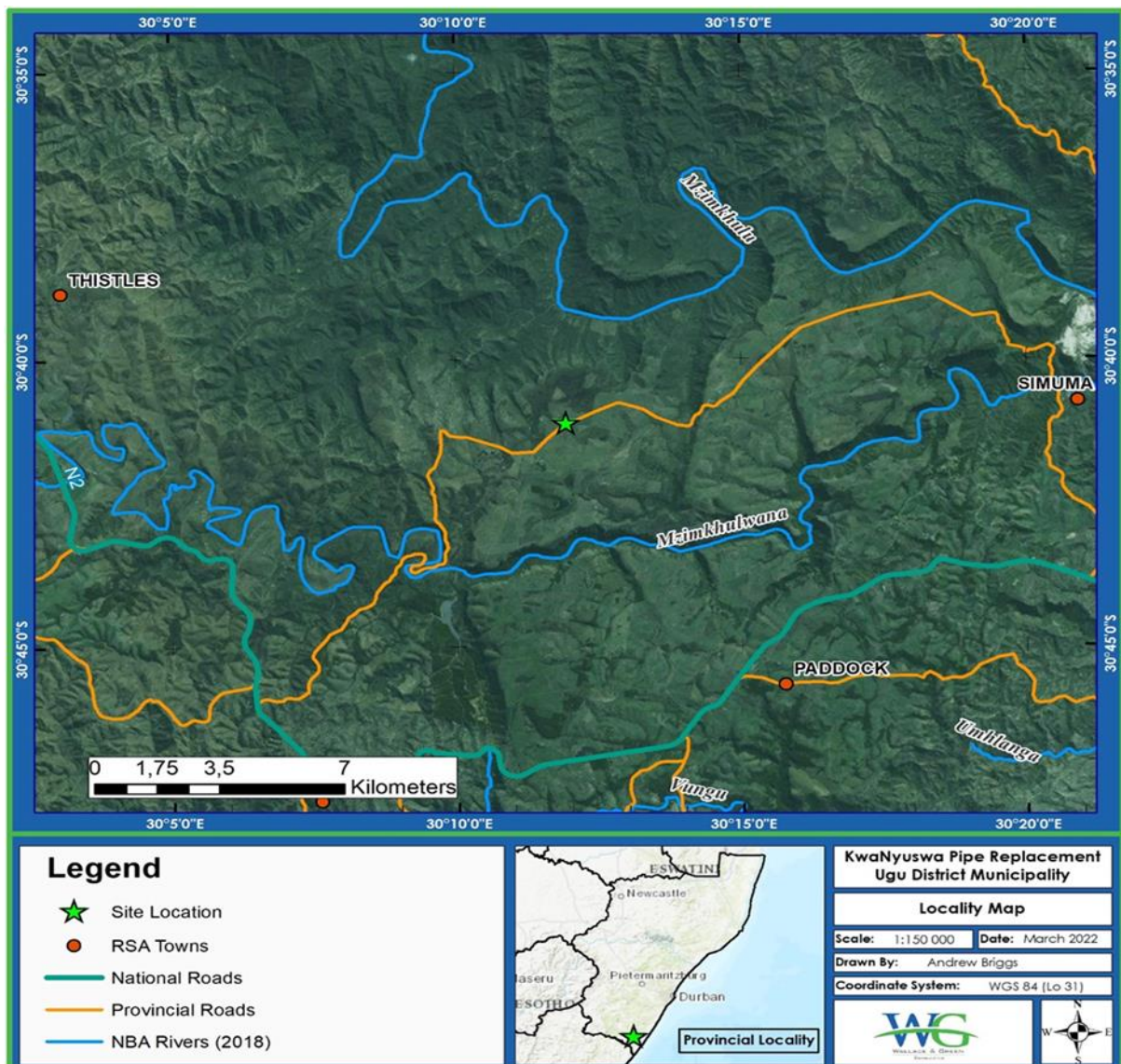
© Copyright 2022 Wallace & Green

## ISINGENISO

Inhloso yedokhumenti Yolwazi Lwesizinda ukuhlinzeka ngolwazi kubantu abanentshisekelo nabathintekayo mayelana nomklamo ohlongozwayo Wokushintshwa Kwepayipi laKwaNyuswa. IWallace and Green (Pty) Ltd. iqokwe iJTN Consulting esikhundleni sikaMasipala wesifunda e-Ugu ukuhlinzeka izinsiza ezizimele zokubonisana ngezemvelo mayelana ngomklamo ohlongozwayo Wokushintshwa Kwepayipi KwaNyuswa.

## INDAWO OKUHLONGOZWAYO UKUSHINTSWA KWEPAYIPHI

Umklamo ohlongozwayo wokushintsha ipayipi lizokwenziwa KwaNyuswa, indawo yasemakhaya etholakala kuWadi 34 kuMasipala Wendawo iRay Nkonyeni, UMasipala wesifunda waseUgu, KwaZulu-Natal. Le ndawo isendaweni engamakhilomitha awu-25 eNyakatho-ntshonalanga yedolobha lasePort Shepstone. Indawo esetshenziswayo ezungeze lo mzila ohlongozwayo wokushintsha ipayipi izindlu zasemakhaya, imisebenzi yezolimo ejulile (ehlenganisa umoba, amasimu enziwe amantongomane e-Macadamia kanye namafutha esihlahla setiye) kanye namadlelo emfuyo.



**Umfanekiso 1: Imephu yendawo ekhombisa indawo yeProjekthi Ehlongozwayo Yokushintshwa Komzila WaKwaNyuswa**



**Umfanekiso 2: Umzila Ohlongozwayo Wokushintshwa Kwepayipi LakwaNyuswa**

**Ithebula 1: Izixhumanisi Zokuqala Nokugcina zomzila Ohlongozwayo Wokushintshwa Kwepayipi LakwaNyuswa**

Ububanzi /Ubude		Amadigri	Amaminithi	Imizuzwana
<b>Iphrojekthi Yokushintsha Ipayipi kwaNyuswa</b>				
<b>(Iphuzu Lokuqala)</b>	<b>eNingizimu</b>	30	41	17.07
	<b>eMpumalanga</b>	30	09	36.65
<b>(Iphuzu Lokugcina)</b>	<b>eNingizimu</b>	30	40	43.19
	<b>eMpumalanga</b>	30	14	23.13

**IMINININGWANE YEPROJEKTHI**

UMasipala Wesifunda Ugu uzimisele ngokushintsha ipayipi elikhona elingamamitha awu-50 ububanzi be-HDPE eliphumayo elinepayipi elingamakhilomitha awu-9 ngepayipi elinamamilimitha awu-63 ububanzi be-HDPE ikilasi 16 elingakwazi ukubhekelela isidingo esilindelekile. Ingxenywe lepayiphi elinamamilimitha awu-50 leHDPE ephumayo eyinhloko lizoguqulwa libe elamandla adonsela phansi futhi lineke amanzi kwindawo yakwaNyuswa. Ngaphezu kwalokho, le ntuthuko ehlongozwayo izophinde ihlanganise nokuthuthukiswa kwe-pumpstation yaKwaNyuswa kanye nokwakiwa kwama-valve namagumbi ahambisanayo. Ukushintshwa kwepayipi okuhlongozwayo kuzohamba phakathi kwedamu laKwaNyuswa kanye nedamu lase St Martins.

**UKUGUNYAZWA KWENDAWO**

Iphrojekthi ehlongozwayo iqala le misebenzi esohlwini elandelayo, ngaleyo ndlela idinga Ukugunyazwa Kwezemvelo ovela eKZN EDTEA **(kusafuna ukuqinекiswa)** ngokoMthetho Wokuphathwa Kwemvelo Kazwelonke.

GNR	Inombolo yomsebenzi	Umsebenzi ngokomthetho	Ukusebenza komsebenzi
(GNR) Inombolo. 327	Umsebenzi wesi-19	<p><i>Ukugcwaliswa noma ukufakwa kwanoma iyiphi impahla engaphezu kwama-cubic metres ayi-10, noma ukumbiwa, ukumba, ukususwa noma ukususwa kwenhlabathi, isihlabathi, amagobolondo, inhlaka yegobolondo, amatshe amatshe noma amatshe angaphezu kwama-cubic metres ayi-10 ukusuka emseleni wamanzi; kodwa ngaphandle lapho lokho kugcwalisa, ukufakwa, ukumba, ukumba, ukususwa noma ukuthutha—</i></p> <p><i>(a) kuzokwenzeka ngemuva kokuphazamiseka kwentuthuko;</i></p> <p><i>(b) okokugcina okwenziwa ngokuhambisana nohlelo lokuphatha;</i></p> <p><i>(c) uwela ngaphakathi kwesiqephu somsebenzi 21 kulesi Saziso, lapho lowo msebenzi usebenza;</i></p> <p><i>(d) kwenzeka ngaphakathi kwamachweba akhona noma amachweba angeke akhulise ukuthuthukiswa kwechweba noma itheku; noma</i></p> <p><i>(e) lapho lokho kuthuthukiswa kuhlobene nokuthuthukiswa kwechweba noma itheku, lapho kusebenza khona umsebenzi wama-26 eSaziso soHlu 2 sika-2014.</i></p>	<p>Intuthuko ehlongozwayo izibandakanya ukugcwaliswa kanye nokumbiwa kwamaxhaphozi amabili kanye nemigudu emibili yokukhipha amanzi yokwenziwa. Lokhu kuzophinde kuhlolwe kuMbiko Owuhlaka Wokuhlola Okuyisisekelo.</p>
(GNR) Inombolo. 324	Umsebenzi wesi-12	<p><i>Ukusulwa kwendawo engamamitha-skwele angama-300 noma ngaphezulu kwezimila zendabuko ngaphandle kwalapho kudingeka khona ukususa izimila zendabuko ngezinjongo zokunakekela okwenziwa ngokuhambisana nohlelo lokuphatha ukunakekelwa.</i></p> <p><b>d. KwaZulu-Natal</b></p>	<p>Ingxenye yepayipi elihlongozwayo litholakala ngaphakathi kwendawo ebalulekile Ezinhlobonhlobo Zezinto Eziphilayo. Kuzokwenziwa</p>

	<p>i. Izindawo ezivikelekile ezingaphesheya eziphethwe ngaphansi kwezivumelwano zamazwe ngamazwe;</p> <p>ii. Izindawo Zokongiwa Komphakathi;</p> <p>iii. Izindawo zeSivumelwano Sezinto Ezinhlobonhlobo Zezinto eziphilayo;</p> <p>iv. Ngaphakathi kwanoma iyiphi i-ecosystem esengozini enkulu noma esengozini esohlwini ngokwesigaba 52 se-NEMBA noma ngaphambi kokushicilelwa kwalolo hlu, endaweni ehlonzwe njengesengozini enkulu ku-National Spatial Biodiversity Assessment 2004;</p> <p><b>(v) Izindawo ezibalulekile zezinhlobonhlobo zezinto eziphilayo njengoba zikhonjwe ezinhlweni ezihlelekile zezinhlobonhlobo zemvelo ezamukelwe isiphathimandla esinekhono noma ezinhlweni zesifunda;</b></p> <p>(vi) Ngaphakathi kwendawo evulekile yomfula noma amamitha ayi-100 phakathi nezwe ukusuka endaweni enamanzi amaningi olwandle noma indawo yokusebenza yechweba, noma yiliphi ibanga elikhulu, ngaphandle kwalapho ukususwa kuzokwenzeka khona ngemva komugqa wokubuyisela emuva ukuthuthukiswa ezizeni ezisemadolobheni.</p> <p>vii. Emhlabeni, lapho, ngesikhathi kuqala ukusebenza kwalesi Saziso noma ngemva kwalokho lowo mhlaba wawuklanywe indawo evulekile, ukongiwa noma waba nendawo efanayo yokuklama;</p> <p><b>viii. Indawo evikelekile ehlonzwe ngokwe-NEMPAA, ngaphandle kwezindawo zokongiwa kwemvelo;</b></p> <p>ix. IziNdawo Zamagugu Omhlaba;</p> <p>x. Amasayithi noma izindawo ezihlonzwe ngokwesivumelwano samazwe ngamazwe;</p> <p>xi. Izindawo eziklanyelwe ukusetshenziselwa ukongiwa kwemvelo Kuzinhlaka Zokuthuthukiswa Kwendawo ezamukelwe isiphathimandla esinekhono noma eziklanyelwe inhloso yokonga;</p> <p>xii. Izindawo ezibucayi njengoba zihlonzwe ohlakeni lokuphathwa kwemvelo njengoba kuhlangezwe esahlukweni sesi-5 soMthetho futhi</p>	<p>ukusulwa kwendawo u-7560m<sup>2</sup> yezimila eziguquliwe nezicekeleke phansi.</p> <p>I-Oribi Gorge Nature Reserve nayo itholakala cishe kube amakilomitha awu-2.30 kusukela epayipini.</p>
--	--	---

		<p>njengoba semukelwe isiphathimandla esinekhono; noma xiii. Ekusebenzeni komfula</p>	
(GNR) Inombolo. 324	Umsebenzi wesi-14	<p>Ukuthuthukiswa kwe- (ii) Nngqalasizinda noma izakhiwo ezinezakhiwo izinyawo ezingu-10 square metres noma ngaphezulu; lapho ukuthuthukiswa okunjalo kwenzeka-</p> <p><b>(a) ngaphakathi komfula;</b> (b) ngaphambi kokuhlehla kwentuthuko; noma (c) uma kungekho ukuhleliswa kwentuthuko okwamukelwe, phakathi kwamamitha angama-32 omfula, kukalwa onqenqemeni lomfula;</p> <p>ngaphandle kokuthuthukiswa kwengqalasizinda noma izakhiwo ngaphakathi kwamachweba akhona noma amachweba angeke akhulise ukuthuthukiswa kwechweba noma itheku.</p> <p>i. Endaweni yokusebenza komfula; ii. Izindawo Zokongiwa Komphakathi; iii. Izindawo zeSivumelwano Sezinto Ezinhlobonhlobo Zezinto eziphilayo; <b>iv. Indawo evikelekile ehlonzwe ngokwe-NEMPAA, ngaphandle kwezindawo zokongiwa kwemvelo;</b> v. Izindawo Zamagugu Omhlaba; vi. Amasayithi noma izindawo ezihlonzwe ngokwesivumelwano samazwe ngamazwe; vii. Izindawo ezibalulekile zezinhlobonhlobo zezinto eziphilayo noma izindawo ezisekela imvelo njengoba kukhonjwe ngendlela ehlelekile izinhlelo zezinhlobonhlobo zemvelo ezamukelwa isiphathimandla esinekhono noma ezinhlelweni zesifunda semvelo; <b>viii. Izindawo ezibucayi njengoba zivezwe ohlakeni lokuphathwa kwemvelo njenge</b></p>	<p>Ipayipi elihlongozwayo lizoba ngaphezu kwamamitha-skwele ayi-10 endaweni yomfula, engaphakathi kwendawo ebalulekile yezinto eziphilayo. Lokhu kuzohlolwa kuMbiko Owuhlaka Wokuhlola Okuyisisekelo.</p>

		<p><b>okuhlongozwe esahlukweni sesi-5 soMthetho futhi njengoba kwemukelwe isiphathimandla esinekhono;</b></p> <p>ix. Izindawo ezibalulekile eziziqiwini ze-biosphere;</p> <p>x. Ngaphandle kwezindawo zasemadolobheni:</p> <p>(aa) Izindawo ezisendaweni engamakhilomitha ayi-10 ukusuka eziqiwini kazwelonke noma ezizindaweni eziyigugu zomhlaba noma amakhilomitha amahlanu ukusuka kunoma iyiphi indawo evikelekile esemhlabeni ehlonzwe ngokwe-NEMPAA noma endaweni ewumgogodla yendawo egcina imvelo; noma</p> <p>(bb) Izindawo ezingasogwini lomzila wokuhlehlisa ukuthuthukiswa noma ngaphakathi kwekhilomitha eli-1 ukusuka endaweni enamanzi amaningi olwandle uma kungekho mzila wokuhlehla onjalo onqunyiwe;</p>	
--	--	--	--

Umuntu ofisa ukuqalisa ngomsebenzi weSaziso seHlu sokuqala noma sesithathu kufanele enze Ukuhlola Okuyisisekelo ngokweMithetho wokuhlolwa Komthelela Kwezemvelo, 2014 (njengoba ichitshiyelwe). Lolu hlelo, olubandakanya ukubamba iqhaza komphakathi, luchazwe ngezansi.

#### **UHLUKO LWENKQUBO YOKUHLOLA OKUSISEKELO, KUHLANGANISA UKUBAMBA IQHAZA KOMPHEKATHI**

Inqubo yokuhlola Eyisisekelo elandelwayo ihlanganisa lokhu okulandelayo:

- Ukuhanjiswa kwesicelo sokugunyazwa kwa-EDTEA;
- Uhlelo Lokuhlanganyela Komphakathi;
  - Isaziso kanye nokusatshalaliswa koMqulu Wolwazi Lwesizinda (Ilo mbhalo) kubabambiqhaza abahlonziwe kanye nama-I&AP's ukuze bamemezele iphrojekthi futhi bameme ababambiqhaza ukuthi babhalise njenge-I&AP futhi babambe iqhaza ohlelweni lokubamba iqhaza komphakathi;
  - o Isikhangiso ephephandabeni lendawo;
  - Isikhangiso ephephandabeni lendawo
  - Ukubekwa kwesaziso sesizindalwazi esazisa ama-I&APs ngomsebenzi ohlongozwayo nokubamema ukuthi babhalise; futhi;
  - Ukubonisana okufanelekile kwe-I&AP ukuze kubhekwane nezinkinga kanye nokukhathazeka okuphakanyiswe;
- Ukuhlanganiswa Kohlaka Lombiko Wokuhlola Okuyisisekelo ukuze ama-I&APs awubuyekeze futhi aphawule.
- Ukulethwa koMbiko Wokugcina Wokuhlola Okuyisisekelo kanye neminingwane yokubonisana ne-I&AP ku-EDTEA, ukuze kuthathwe isinqumo;



- Ukuxhumana nama-I&APs mayelana nesinqumo esenziwe u-EDTEA ngesicelo sokugunyazwa kwezemvelo.

### **UKUHLOLA NGOCHWEPHESHE**

Ukwazisa uMbiko Wokuhlola Okuyisisekelo, ucwaningo olukhethekile kufanele lwenziwe. Ukuhlolwa kwendawo yokuhlala, Ukuhlolwa Komphumela Wamagugu kanye Ukuhlolwa Komzila Wamanzi sekwenziwe futhi okutholakele okubalulekile kufingqiwe ngezansi. **Imibiko egcwele yongoti izotholakala ukuze umphakathi uphawule ngayo njengengxenywe yoMbiko Osalungiswa Wokuhlola Okuyisisekelo.**

#### **Ukuhlolwa Kwendawo yokuhlala:**

Ukuhlolwa Kwendawo yokuhlala yenziwe nguMnu. Clayton Cook ngo-Mbasa 2022. Isizinda socwaningo singena kakhulukazi endaweni yaseMpondoland-Ugu Sandstone Coastal Sourveld esendaweni ezinhlobonhlobo zezinto eziphilayo. Indawo yephrojekthi ihlanganisa ikakhulukazi izindawo zokulima eziguquliwe, izindawo zokulima ezingalinyiwe ezigcwele izizinda ezilandelanayo kanye nezindawo zehlathi zikagamthilini ezihlaselwe kanye neziqwi zemigwaqo. Ukuguqulwa komhlaba kanye nophiko lwezitshalo ezimila eMampondweni-Ugu Sandstone Coastal Sourveld lubangelwa ikakhulukazi ukulima komoba, amantongomane e-macadamia namasimu kawoyela wesihlahla setiye. Kutholwe ukuhlukahluka kwezitshalo nezinhlobo endaweni yephrojekthi. Isimiso samanje nesihlongozwayo sokushintshwa kwepayipi sihlukanisa ingxenywe yezitshalo eziguquliwe nezicekeleke phansi njengeValley Bushveld, eduze nesiqephu sensalela yehlathi elingasogwini eliphansi kanye nezingxenywe ezingaphezulu zemigudu yokudonsa amanzi angagobhozi njalo. Kungumbono wochwepheshe ukuthi iphrojekthi ngeke ibe nomthelela omkhulu endaweni futhi kufanele igunyazwe inqobo uma izinyathelo ezihlongozwayo zokunciphisa zifakiwe kuHlelo Lokuphathwa Kwemvelo futhi okubaluleke kakhulu njengoba ukuhlinzekwa kwamanzi adingekayo kubalulekile ukuze imiphakathi ikwazi ukuba namanzi ngenxa yenkinga yokungabiko kwamanzi kuMasipala Wesifunda eUgu.

#### **Ukuhlolwa Komphumela Wamagugu:**

Ukuhlolwa Komthelela Wamagugu kwenziwa Umlando: I-Archaeological Surveys and Heritage Management ngo-Ndasa 2022. Izindawo eziningi zemivubukulo zenzeka endaweni evame ukuba yizindawo ezivulekile zenkathi yamatshekanye neminyaka yensimbi ezinokubaluleka okuhlukahlukene, kanye nezakhiwo zomlando ezenzeka ngendlela yamapulazi awakuqala. Ipayipi ngokuvamile lisendaweni encane kwezempilo ezaziphila ekuqaleni komhlaba kuyilapho ipayipi lasentshonalanga libaluleke kakhulu. Azikho iziza eziyigugu ezitholakele phakathi nendawo yepayipi, kuyilapho izakhiwo ezimbalwa zomlando zitholwe zenzeka endaweni evela kumamitha awu-100 ukusuka endaweni yepayipi. Ukuhlolwa komthelela kwezempilo ezaziphila ekuqaleni ayidingeki njengoba kushiwo encwadini yokukhululwa ngenxa yekhono elilinganiselwe lokulondoloza izinsalela zamathambo endaweni yephrojekthi. Kungumbono wochwepheshe ukuthi iphrojekthi ingaqhubeka njengoba umkhondo wepayipi ngeke uthinte iziza zamagugu ezirekhodiwe.

#### **Ukuhlolwa Komzila Wamanzi:**

Ukuhlolwa Komzila Wamanzi kwenziwa i-Wallace and Green ngo-Mbasa 2022. Ukuhlola okuyisisekelo kwendawo yokuhlala emfuleni wamanzi kuhlonze indawo eyixhaphozi eyodwa

eyonakele (Unit W01), kanye nezindawo ezine zokwenziwa zamanzi ezihlukaniswa zaba amaxhaphozi amabili (Unit AW01 kanye ne-AW02) kanye nemisele emibili eyenziwe (AD01 kanye ne-AD02), ezitholakala endaweni eqondise nepayipi. Iyunithi W01 itholwe isesimweni 'esilungiswe kakhulu' lapho kunoshintsho olukhulu ezinqubweni ze-ecosystem kanye nokulahlekelwa indawo yokuhlala yemvelo. Yonke imigudu yamanzi yemvelo neyokwenziwa kwanqunywa ukuthi iphansi Ukubaluleka Kwendawo Ezungezile Nokuzwela kuyilapho ingahlinzeki ngezinsizakalo ezibalulekile ze-ecosystem. Imithelela engase ibe khona emifuleni yamanzi yemvelo neyokwenziwa ihlanganisa ukulahlekelwa indawo yokuhlala egeleza emanzini, ukuguguleka kwenhlabathi, ukubuthwa kwezitshalo zangaphandle kanye nokungcoliswa kwamanzi nesihlabathi. Kungumbono wochwepheshe ukuthi, ngokombono iphrojekthi ehlongozwayo yokushintsha amapayipi kufanele igunyazwe uma izinyathelo zokunciphisa kanye nezincomo eMbikweni Wokuhlola Umzila Wamanzi ngemithelela engaba khona, kanye nezidingo zemvelo ezihambisanayo, kubhekwana nazo.

### **Iminikelo yakho ibalulekile**

Ungabamba iqhaza kulolu hlelo:

1. Ngokuphendula (ngocingo noma nge-imeyili) kwisimemo sethu sokuzibandakanya kwakho ohlelweni
2. Ngokugcwalisa ifomu lokuphawula elinamathiselwe nokulithumela nge-imeyili ku-Wallace and Green;
3. Ngokubhala, ukuthintana noma ushayekele ucingo kumhloli wemvelo uma unombuzo, umbono noma udinga ulwazi olubanzi ngephrojekthi; futhi
4. Ngokubuyekeza nokuphawula ngombiko wokuhlola okuyisisekelo phakathi nesikhathi esivunyelwe sokubuyekeza izinsuku ezingu-30.

NgokweMithetho ye-NEMA EIA 2014 (njengoba ichitshiyelwe) umenywa ukuba ubhalise ngokusemthethweni njengomuntu onentshisekelo nothintekayo.

Sicela uqaphele ukuthi ngokoMthethonqubo wama-56 (c), abantu abanentshisekelo nabathintekayo badinga ukudalula noma yiliphi ibhizinisi eliqondile, lezezimali, lomuntu siqu noma okunye okuthakaselayo angaba nalo ekugunyazweni noma ekunqatshweni kwesicelo.

NgokoMthetho Wokuvikelwa Kolwazi Lomuntu Siqu, oluqale ukusebenza ngomhla ka-1 Ntulikazi 2021, imvume kufanele inikezwe kumhloli wemvelo nokusebenzisa ulwazi lomuntu siqu olunikeziwe. Ulwazi olutholiwe luzotholakala kuziphathimandla eziningana ezinekhono.

Sicela ubhalise **ungakafiki umhlaka-7 waNhlangulana 2022**, ngokugcwalisa ukubhalisa neshidi lokuphawula elifakiwe futhi sicela uveze intshisekelo yakho mayelana nomsebenzi ngokuphawula kwakho. Usuku olukugcina uwona umhlaka-7.

**IFOMU LOKUBHALISA:**  
**Umklamo Ohlongozwayo Wokushintsha Ipayipi Lamamzi kwaNyuswa,  
uMasipala wendawo eRay Nkonyeni, UMasipala wesifunda waseUgu, KZN**

**Qaphela: Nksz. Simitha Koobair | Mnu. Ntokozo Ntshobeni**

**Inombolo yehhovisi: 031 563 4466**

**I-imeyili: [simitha@wallaceandgreen.co.za](mailto:simitha@wallaceandgreen.co.za) | [ntokozo@wallaceandgreen.co.za](mailto:ntokozo@wallaceandgreen.co.za)**

**Inombolo ye-Feksi: 086 613 8535**

Isihloko (Mnu/Nkk/Nkz)	Ucingo
Igama	ifeksi
Inhlangano/Intshisekelo	I-imeyili
Isiginesha	

Sicela ubeke uphawu kumbuthano ofanele futhi uqinisekise imininingwane yakho yokuxhumana ngenhla:

Ukubhalisa

<input type="radio"/>	Ngingathanda ukubhalisa njengeqembu elithakaselayo nelithintekayo ohlelweni lwenqubo yokuhlola eyisisekelo lwale phrojekthi. Ngokugcwalisa le dokhumenti, ngivuma ngokuzithandela ukuthi imininingwane yami siqu ingase isetshenzwe, iyoqwe, isetshenziswe futhi idalulwe ngokuhambisana noMthetho Wokuvikela Ulwazi Lomuntu Siqu, 4 ka-2013. Ngaphezu kwalokho ngiyavuma ukuthi imininingwane yami ingasetshenziselwe okwomthetho futhi nezinjongo ezifanele kuze kufike ku-Wallace & Green Environmental Consulting (iqembu elibophezelekile) isebenzise ulwazi lwami ekwenzeni imisebenzi yayo yenkontileka. Nginyaqonda ukuthi ulwazi lwami lomuntu siqu lungadalulwa enkampanini yangaphandle njengoba i-Wallace & Green Environmental Consulting kumele ifeze umsebenzi wayo wenkontileka wezomthetho.
<input type="radio"/>	Abangahlanyanyeli: Ngingathanda ukuthi ungikhiphe ephepheni lakho lokusabalalisa iSiphakamiso. Angithandi ukuthola eminye imininingwane mayelana nalolu hlelo.



---

---

---

---

---

---

---