

BACKGROUND INFORMATION DOCUMENT (BID)

Basic Assessment for a New Sewage Line in Ward 20, Pietermaritzburg

Introduction

A new sewage line servicing Ward 20 Edendale, within Msunduzi Municipality is proposed.

A total of approximately 5km pipeline is envisaged, however approximately 1km of this lies adjacent to the Mzubukazi River. This section of the reticulation will start at the intersection of roads C13 and C16, shown in the locality map in Appendix A, and follow the Mvubukazi River until it crosses Caluza Rd to join the existing sewage pipeline running parallel to this road.

It is this approximately 1km that requires a basic assessment.

Scope of Work

Makhaotse, Narasimulu & Associates (Pty) Ltd are the consulting engineers and project managers and will be following specifications based on South African National Standardised Specifications for Civil Engineering Construction SANS 1200.

- (i) Supply and installation of sewer pipelines, associated fittings and necessary materials for the water borne sewer reticulation system;
- (ii) Construction of concrete ring manholes and covers and associated materials, fittings, erf connections, jointing and sealing

compounds for the sewer reticulation system;

- (iii) Re-instatement of the site, walkways and roads, and removal of all debris and spoil material to the local landfill site.
- (iv) Pipe jacking under Caluza Road.

Environmental Impact

According to Listing Notices 1, 2 and 3 (GNR 544, GNR 545 and GNR 546, of the National Environmental Management Act, NEMA - 18 June 2010) the following activities are noted thus far:

Listing Notice 1 (GNR 544, 18 June 2010):

9 : The construction of total approximately 4300m sewage pipeline within 32m of a watercourse, measured from the edge of the watercourse.

11 (xi) : The construction of infrastructure 50sqm or more where such construction occurs within 32 metres of a watercourse.

18 (i) : The excavation, moving of more than 5m³ soil and rock from a watercourse.

Hence a Basic Assessment (BA) is necessary.

The focus of the environmental authorisation process is to provide necessary sanitation to the community whilst protecting the water course and surrounds from damage.



Figure 1: A section of the proposed pipeline site showing a pedestrian bridge



Figure 2: Section of the river at the beginning point of the proposed sewage line showing an informal dam

Mitigation Measures

There are several risks associated with construction activities in the locality of a water course. Initial mitigation measures include a minimal working footprint, site demarcation, demarcation of no-go areas, designated and demarcated site access routes, sediment control measures, spillage control measures, dust control measures, general construction control, staff training and site rehabilitation post construction. A monitoring and auditing plan for the construction and operational phases of the pipeline will be formulated to ensure that the mitigation measures, detailed in the Environmental Management Plan (EMP) are followed.

A Riverine Vegetation Assessment or Ecological Health Assessment of the watercourse may be required. There are no wetlands in the project area or within 500m of the area.

Public Participation

All Interested and Affected Parties (I&AP's) are invited to register, using the form provided, on the database managed by 1World Consultants by email or fax using the details provided.

Timeframes

Interested and affected parties are respectfully requested to respond in writing within thirty (30) days of receipt of this document.

Comments and recommendations regarding the proposed pipeline are welcome and may be addressed to:

Fatima Peer B.Sc. (Hons) Pr. Sci. Nat.

Tel: 031 262 6701

Cell: 082 640 4900

Fax: 086 726 3619

Email: fatima.peer00@gmail.com

REGISTRATION AS AN INTERESTED AND AFFECTED PARTY

I, _____, hereby wish to be notified of any information pertaining to the basic assessment, for the proposed sewage pipeline in Ward 20, Edendale, Pietermaritzburg.

Title:	First Name:	Surname:	Initials:
Organisation/Property Name:			
Interest in development (i.e.: government department, neighbour, etc):			
Postal Address:			
Postal Code:		Email:	
Tel:	Fax:	Cell:	

Issues to be noted regarding the proposed sewage line:

I require a full copy of the Basic Assessment Report:

YES	NO
-----	----

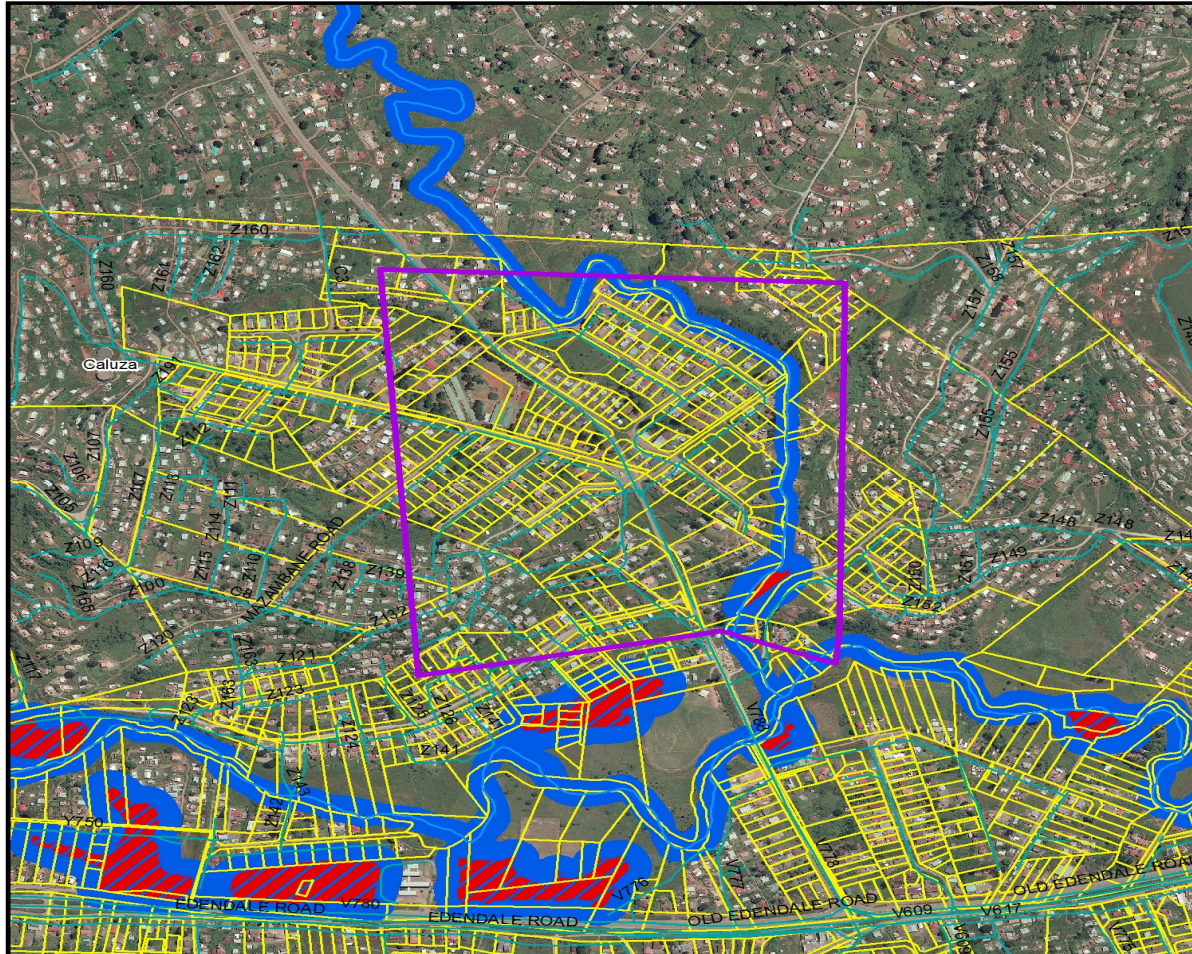
Further potentially interested and affected parties to be contacted:

Title:	First Name:	Surname:	Initials:
Organisation/Property Name:			
Interest in development (i.e.: government department, neighbour, etc):			
Postal Address:			
Postal Code:		Email:	
Tel:	Fax:	Cell:	

Additional Concerns/Comments:

Thank you

Ward 20



Legend

Draft MOSS (MOSS symbology)

MOSS_Class

- Protected Areas
- Key Areas
- Terrestrial Corridors
- Riparian Corridors
- Public Open Space - Untransformed
- Protected Areas and Riparian Corridors
- Protected Areas and Public Open Space (Untransformed)
- Protected Areas and Terrestrial Corridors
- Key Areas and Riparian Corridors
- Key Areas and Public Open Space (Untransformed)
- Terrestrial Corridors and Public Open Space (Untransformed)
- Riparian Corridors and Public Open Space (Untransformed)



0 65130 260
Meters

