

Environmental Impact Assessment (DEA REF 14/12/16/3/3/2/759) for the installation of a Solar Photovoltaic Power Plant at Eskom's Duvha Power Station, Emalahleni Local Municipality, Mpumalanga
BACKGROUND INFORMATION DOCUMENT (BID)

Invitation to register and comment

PURPOSE OF THIS DOCUMENT

The purpose of this document is to afford stakeholders the opportunity to register as interested and affected parties (I&APs) in the Environmental Impact Assessment (EIA) and to obtain their initial comments on, and contributions to the proposed installation of a Solar Photovoltaic (PV) Power Plant at Eskom's Duvha Power Station, located in the Emalahleni Local Municipality Mpumalanga Province.

I&APs can register by completing the registration form attached, write a letter, call, fax or e-mail ILISO and request to be added to the database. All documents will be made available for review at a local location. Stakeholders will be notified when and where documents will be available for comment.

Public Participation Team

Kim Dalhuijsen or
Joseph Masilela

ILISO Consulting (Pty) Ltd

PO Box 68735,
Highveld,
Centurion
0169

Tel: (012) 685 0900
Fax: (012) 665 1886

PROJECT BACKGROUND

Recent investigations showed that South Africa has a very high solar irradiance level which makes Solar Photovoltaic (PV) Power a very attractive option. Eskom Holdings SOC Limited is therefore proposing to install a PV power plant at Duvha Power Station, located in the Emalahleni Local Municipality, Mpumalanga Province. This roll-out will form part of the Eskom Renewables Strategy in the Eskom Renewables Energy Unit.



DESCRIPTION OF THE PROJECT and PROJECT AREA

Eskom's Duvha Power Station is located approximately 15 km east of Witbank in Mpumalanga and forms part of the Nkangala District Municipality and Emalahleni Local Municipality. The proposed installation site for the PV power plant is 35.2 ha and has a projected electricity output of 23.5 MWp. The proposed site will be situated within the properties of Eskom's Duvha Power Station. (**Figure 1**).



ENVIRONMENTAL IMPACT ASSESSMENT FOR A SOLAR PHOTOVOLTAIC POWER PLANT AT ESKOM'S DUVHA POWER STATION

LOCALITY MAP

Legend

- Farm positions
- Erven
- Parent farms
- Duvha PV Site Alternatives
- Rivers
- Main Roads
- Dams and Lakes
- Places

ILISO CONSULTING
PEOPLE • INTEGRITY • EXCELLENCE
Subsidiary of NAKO Group

Eskom

DATE: 4 DECEMBER 2014
SYSTEM: HARTEBESHOEK94
MAP BY: NDOMUPE DHEMBA

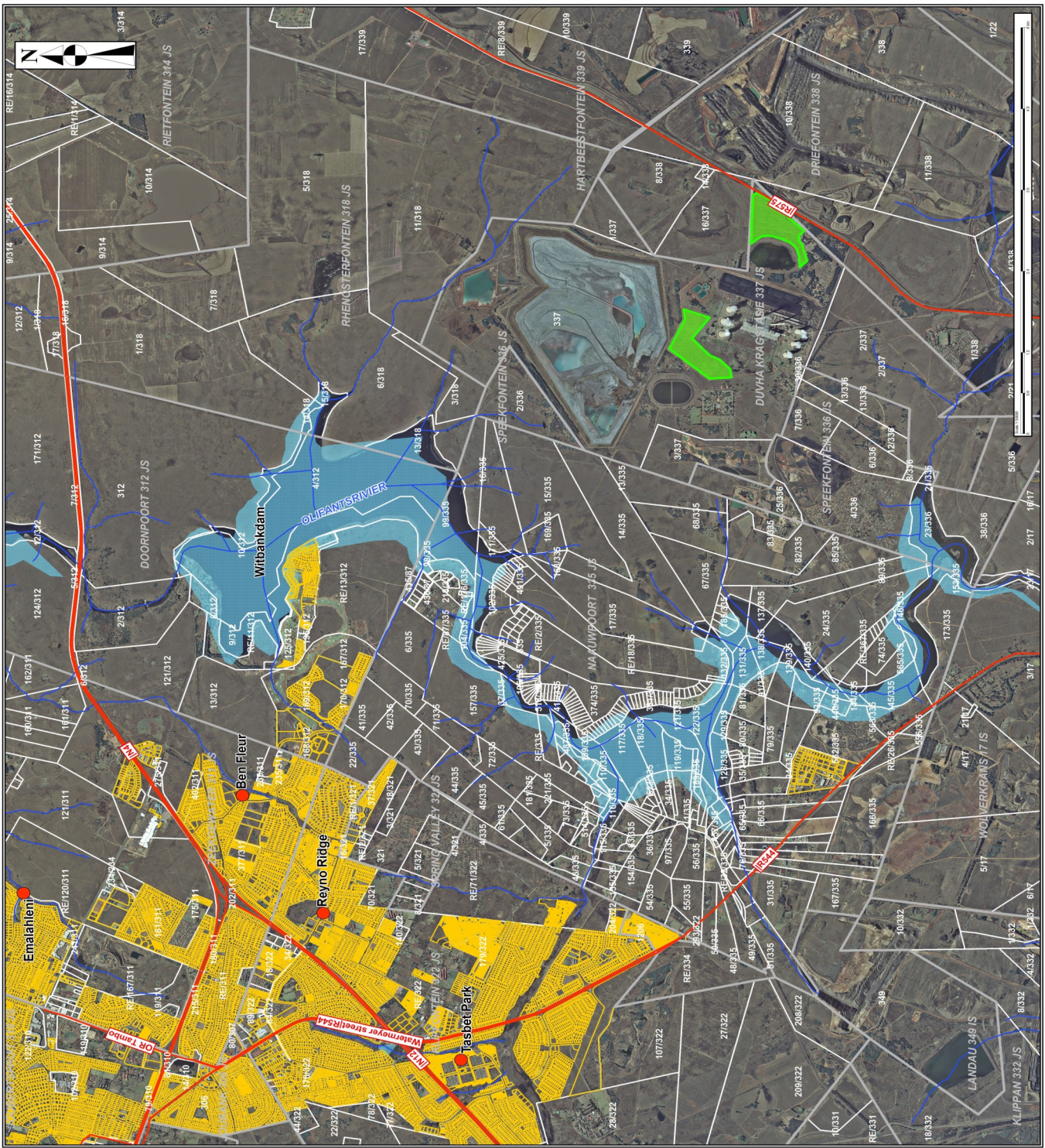


Figure 1: Location of Duvha Power Station and proposed Solar PV site

AIM OF THE PROJECT

The purpose of the PV installation is to supply Eskom's own consumption at Duvha Power Station. This will enable Eskom to diversify their energy mix, reduce their carbon footprint, and support the demand side management energy efficiency programme.

ENVIRONMENTAL IMPACT ASSESSMENT (EIA)

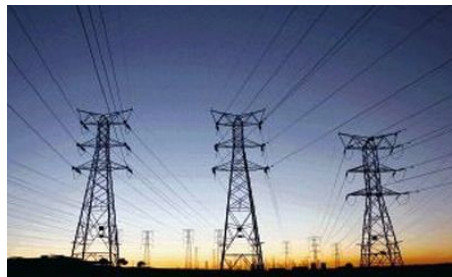
What is an EIA?

An EIA is a planning and decision-making tool. It identifies the potential negative and positive consequences of a proposed project or development at an early stage, and recommends ways to enhance positive impacts and to avoid, reduce or mitigate negative impacts. The EIA findings will also inform further technical and financial investigations and decisions. The EIA is undertaken in terms of section 24C of the National Environmental Management Act (NEMA), Act No 107 of 1998.

Public participation is an important aspect of any EIA, with the objective to assist stakeholders to table issues of concern, suggestions for enhanced benefits and to comment on the findings of the EIA. The Public Participation Process (PPP) is designed to provide sufficient and accessible information to Interested and Affected Parties (I&APs) in an objective manner, in order to assist them to:

- Raise issues of concern and make suggestions for alternatives and enhanced benefits;
- Contribute local knowledge;
- Verify that issues have been captured correctly and considered by the technical investigations; and
- Comment on the findings of the EIA.

Additionally, the EIA Regulations require that an Environmental Management Programme (EMP) be developed in order to explain how to operate and implement environmental protection recommendations from the EIA for the construction and operational phases. The provisions of the EMP will become legally binding to Eskom and its Contractors.



The EIA Process. What does it involve?

Eskom, National and Provincial Government, various other authorities, environmental and technical specialists and stakeholders will work together in the EIA process. The EIA consists of two phases, the Scoping Phase and the EIA Phase. These phases will include:

- Early consultation with a broad range of stakeholders, landowners and communities in the vicinity of Duvha Power Station;
- Technical consultation with specialists;
- Assessments by several specialists through the Impact Assessment Phase to assess the potential impacts of the project;
- Authority and stakeholder comment at each phase during the EIA process; and
- Authority decision-making.

Two reports will be produced through this process, the Scoping Report and the Environmental Impact Report (EIR) accompanied by the EMP. These reports will be made available to I&APs for review and comment.

Information input
public participation meetings open
Stakeholder engagement

THE PUBLIC PARTICIPATION PROCESS

The public participation process will be conducted by ILISO Consulting (Pty) Ltd in accordance with Chapter 6 of the EIA Regulations, 2010, as amended.

In order to ensure that your concerns are considered during the EIA process you are invited to register as an Interested and Affected Party (I&AP) by completing the attached registration form and submitting it to Ms Kim Dalhuijsen or Mr Joseph Masilela (details provided below) within 14 days of receipt of this Background Information Document (BID). Notification of meetings and documents available for comment will be sent to all registered I&APs.

As part of the two phase EIA process, a draft Scoping Report will be compiled and made available to the I&APs for a public comment period. All issues and comments received during the public participation process will be captured in an Issues and Response Report (IRR) and will be incorporated into the final Scoping Report. The IRR will form an appendix to the final Scoping Report that will be submitted to DEA for authorisation and made available for a further a public comment period.

Once authorisation for the Scoping Phase has been acquired, the EIA phase will commence. A draft EIR will be made available to all stakeholders who have registered as an I&AP for a public comment period. All comments received will be added to the Scoping Phase IRR. The amended and updated IRR will form an appendix to the final EIR that will be submitted to DEA for authorisation and made available for a further a public comment period.



PEOPLE • INTEGRITY • EXCELLENCE

Subsidiary of  NAKO Group

CONTACT DETAILS

**203 Witch-hazel Avenue, Highveld Technopark, Centurion 0169
PO Box 68735, Highveld, Centurion, 0159**

Tel: 012 685 0900

Fax: (012) 665 1886

**Kim Dalhuijsen
Email: Kim.d@iliso.com**

**Mr Joseph Masilela
Email: joseph.m@iliso.com**

**Environmental Impact Assessment (DEA REF 14/12/16/3/3/2/759) and Water Use License Application (WULA)
for the installation of a Solar Photovoltaic Power Plant at Eskom's Duvha Power Station,
Emalahleni Local Municipality, Mpumalanga
BACKGROUND INFORMATION DOCUMENT (BID)**

Please complete and return to the Public Participation Office for the Eskom Solar Photovoltaic EIA

ILISO Consulting (Pty) Ltd, PO Box 68735, Highveld, 0169, Tel: (012) 685 0900, Fax: (012) 665 1886
Email: kim.d@iliso.com / joseph.m@iliso.com

Title		First Name	
Initials		Surname	
Organisation			
Postal Address		Postal Code	
Street Address			
Tel Number		Fax Number	
Cell Number			
E-mail			

Yes, I would like to participate in this EIA No, I m not interested

My interest in this project is as follows:

The following issues should be considered in the EIA:

Any other comments:

Please add the following colleagues/friends to the mailing list:

Your participation is appreciated!