

Alfred Nzo District Municipality

MATATIELE WARD 15 WATER SUPPLY SCHEME – ENVIRONMENTAL SERVICES



BACKGROUND INFORMATION DOCUMENT

September 2014



1. BACKGROUND

Alfred Nzo District Municipality are proposing the implementation of a water supply scheme for ward 15 of the Matatiele Municipality. Terreco Environmental cc has been appointed by Beacon Consulting Engineers, on behalf of the Alfred Nzo District Municipality, to undertake the legally required application process for Environmental Authorisation (EA) including the environmental impact assessment and report which must be provided in support of the application - see Section 3 below.

This Background Information Document (BID) serves as notice of the proposed activity, of the environmental impact assessment processes that will take place, and as a request for any comments regarding the proposals and EIA processes. Should you be interested in registering as a 'Registered Interested and Affected Party' and/or in submitting comments or information on the proposals, please use page 3 and 4 of this document to register your interest.

2. THE PROPOSALS

The proposals involve the implementation of a water supply scheme for ward 15 of the Matatiele Municipality and comprises the establishment of a borehole water supply from six boreholes and the construction of a weir and silt box, primary bulk main pipeline (± 40 km), one command reservoir, one booster pump station, one high lift pump station and nine village storage reservoirs.

3. THE ENVIRONMENTAL IMPACT ASSESSMENT PROCESS

The Department of Economic Development, Environmental Affairs and Tourism (DEDEAT) have confirmed the proposals triggers 'listed activities' in terms of Government Notices R544, including activity numbers 11 (xi) and 18 (i). Therefore, there is a need for prior Environmental Authorisation from the Department for the water supply scheme construction activities in particular. The application process, environmental impact assessment and Basic Assessment Report (BAR) will be prepared in accordance with Government Notice R543, Environmental Impact Assessment (EIA) Regulations 2010. Key tasks to be undertaken during the preparation of the BAR include: submission of an application form to DEDEAT (Kokstad); notification and call for interested and affected parties to register; holding a public meeting; site visits, data collection and specialist studies; preparation of a draft BAR for public review; finalisation and submission of the BAR to DEDEAT for consideration for approval; and notification of the decision made by DEDEAT.

4. THE PUBLIC PARTICIPATION PROCESS

An integral and mandatory component of the EIA is **Public Participation**, whereby interested and affected persons and the public at large are informed of the Project and afforded the opportunity to participate in the EIA process. The EIA Regulations describe the minimum level of public involvement, including the posting of newspaper advertisements, the placing of a notice board(s) on site and arranging a public meeting.

If you have any concerns, comments, opinions or issues regarding the proposals and EIA process, please use pages 3 and 4 of this document to register your interest and return to as per the details provided.

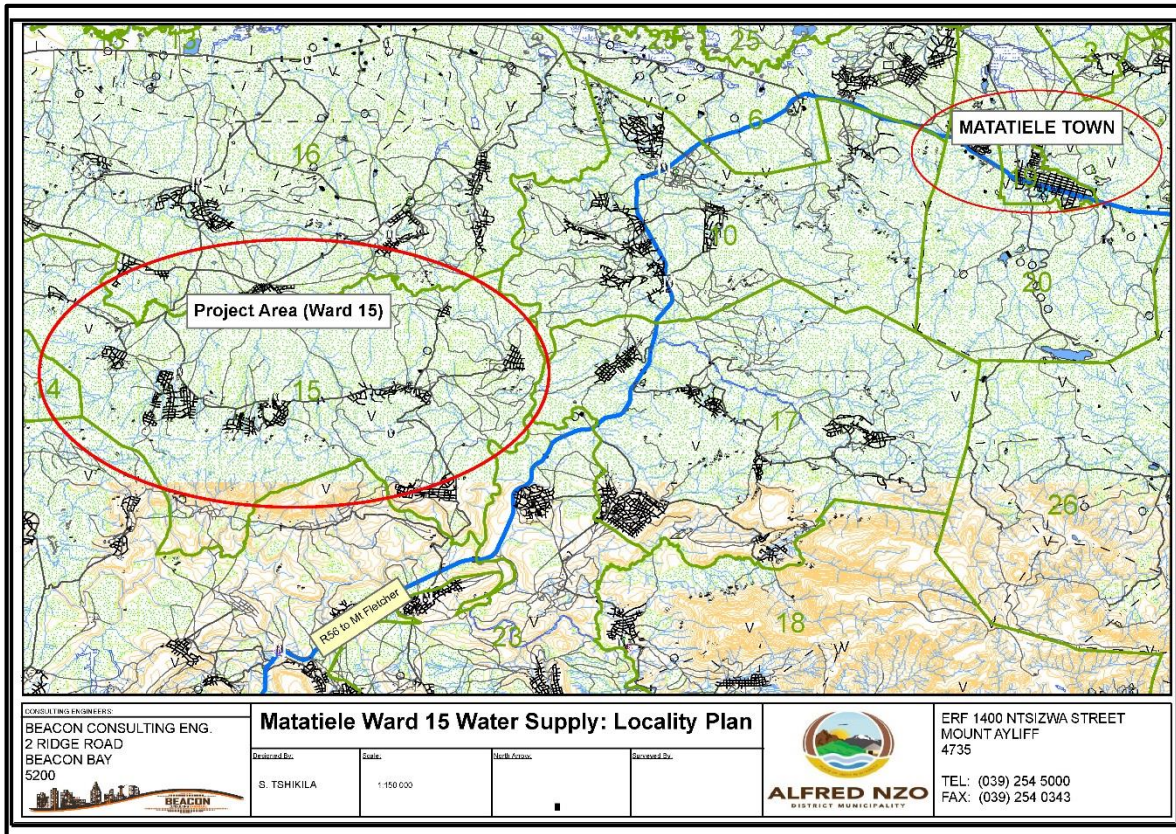


FIGURE 1: Matatiele Ward 15 Locality Plan

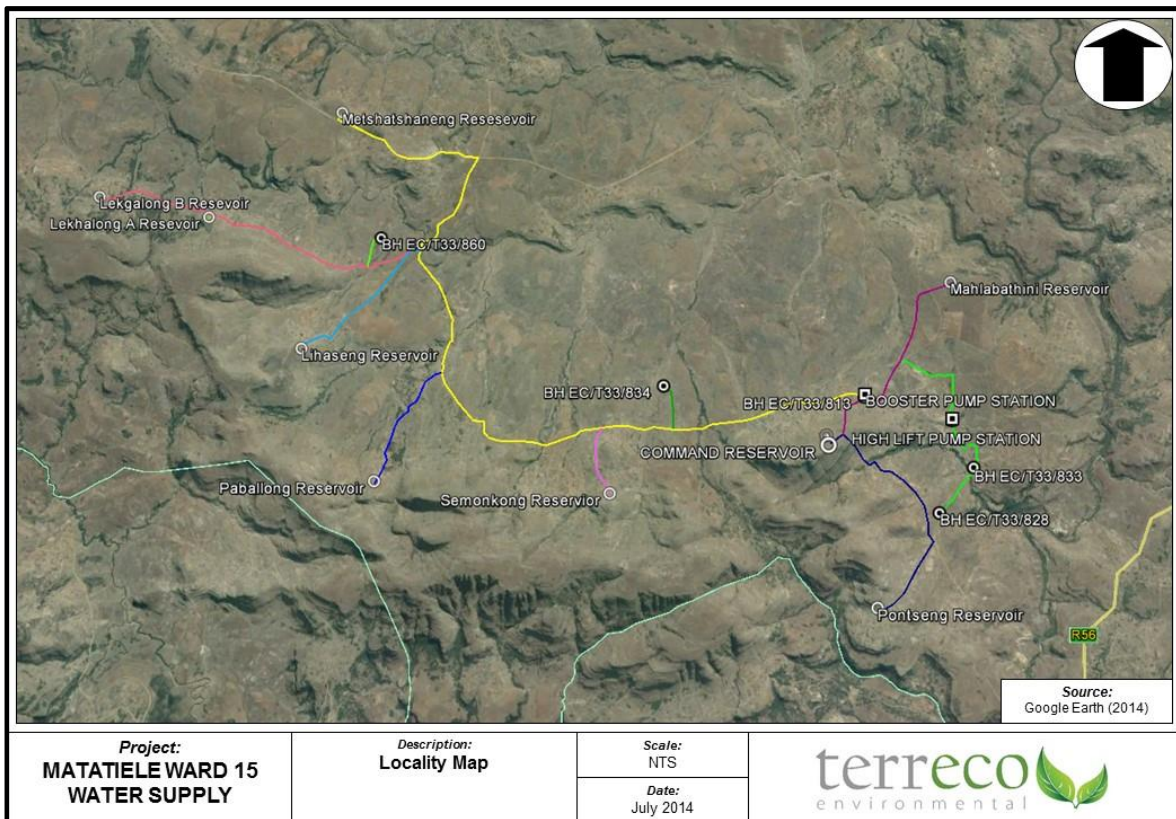


FIGURE 2: Matatiele Ward 15 Layout Plan

ENVIRONMENTAL IMPACT ASSESSMENT PROCESS

MATATIELE WARD 15 WATER SUPPLY SCHEME

Comments on the Proposed EIA Process, Concerns and Issues

Your comments on this questionnaire will contribute towards ensuring that the process which is applied to direct the Environmental Impact Assessment is sound and will permit an informed project decision to be taken. **The deadline for the receipt of comments is 1st October 2014.** Contact details are provided below.

Name:

.....

Community/Organisation:

.....

Contact details:

.....

.....

1. **Do you wish to be registered as an 'Interested and Affected Party for the Environmental Impact Assessment process?**

As a 'Registered Interested and Affected Party' you will be specifically invited at key stages of the Environmental Impact Assessment process to review documents produced and/or provide any additional comment or opinion on the proposals and the results of the environmental Impact Assessment Process.

Please tick the box that applies:

YES	NO
-----	----

2. **Do you have any specific opinions regarding the proposals in the Matatiele Ward 15 Water Supply Scheme?**

Do you have any specific opinions regarding the potential impacts of the proposals on the natural environment or the local communities? Do you support or oppose the proposals? Do you believe the proposals will benefit the local communities?

.....

.....

.....

.....

.....

.....

.....

.....

(Please use additional pages to record your comments as necessary)

3. Are there any parties or individuals that you feel should be consulted in the course of the Environmental Impact Assessment process?

If yes, please provide any contact details so that we may contact this person or organisation.

.....

.....

.....

.....

.....

4. Is there any other information that you feel we could or should use for the Environmental Impact Assessment of the Matatiele Ward 15 Water Supply Scheme?

.....

.....

.....

.....

.....

.....

THANK YOU FOR YOUR COOPERATION

Mrs Dalene Murie
Terreco Environmental cc
P O Box 19829, Tecoma, EAST LONDON, 5214
Phone: (043) 721 1502 - Fax (043) 721 1535 - email: admin@terreco.co.za