

Purpose of a Background Information Document (BID)

The purpose of this Background Information Document (BID) is to provide Interested and Affected Parties (IAP's) with background information on the proposed project and introduce the Environmental Basic Assessment (BA) process to be followed. It also aims to (i) inform IAP's on how to participate in the BA, (ii) encourage responses to documents that will be distributed for review and (ii) encourage I&AP's to attend any public meetings.

1World Consultants have been appointed as the independent Environmental Assessment Practitioner (EAP), to undertake the Basic Assessment for the proposed pedestrian bridge.

Nature and Location of Activity

The Hibiscus Coast Local Municipality proposes the construction of a pedestrian bridge, to be referred to as "Dressing Bridge" to provide safe crossing over the _____ River, for the local community (map provided in Appendix A).

The new bridge will be approximately 19m long with 5m concrete approach slabs on either side. Footpaths of 17m and 7m on either side of the bridge will also be constructed.



Environmental Impact

The proposed bridge will involve the intersection of a natural watercourse in a rural area and will require the removal of soils, rock, etc from the bed and banks of the river. Hence an Environmental Authorisation and a Water Use License Application will be required.

In terms of the Environmental Impact Assessment (EIA) Regulations (2014) promulgated under the National Environmental Management Act (Act No. 107 of 1998) (as amended), a Basic Assessment Study will be required. The proposed development involves inter alia, the following listed activity, as per Listing Notice 1:

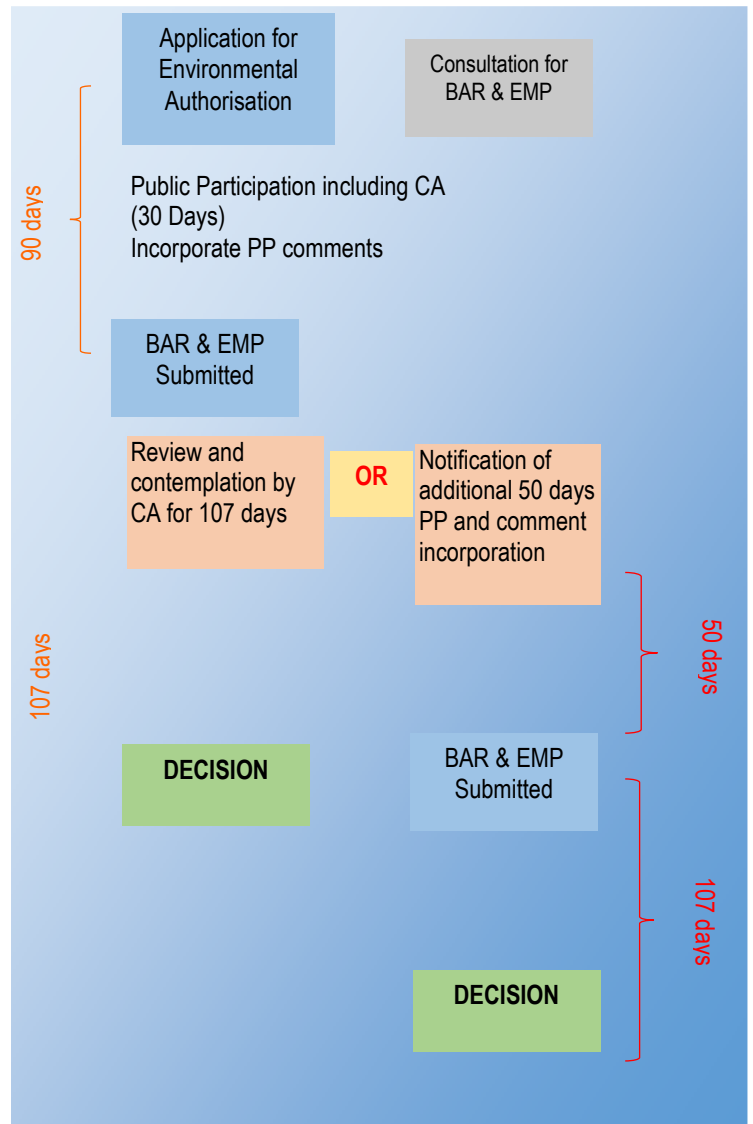
Activity 19 (i): The infilling or depositing of any material of more than 5 cubic metres into, or the excavation, removal or moving of soil and rock of more than 5 cubic metres from a water course during construction.

The Basic Assessment Process and Public Participation Process (PPP)

The primary aim of the Basic Assessment is to ensure that any potential environmental impacts that may occur, due to the construction and/or operation of the proposed development, are mitigated.

The main aspects of a Basic Assessment are:

- Investigate and gather information on the area,
- Describe the environment and how the development would fit in,
- Identify and involve potential I&AP's and stakeholders,
- Identify potential impacts,
- Investigate alternatives to the proposed development,
- Recommend mitigation measures and compile an Environmental Management Plan (EMP) for the construction and operational phases.



Mitigation Measures:

There are several risks associated with construction activities in the locality of a water course. Initial mitigation measures include a minimal working footprint, site demarcation, demarcation of no-go areas, designated and demarcated site access routes, sediment control measures, spillage control measures, dust control measures, general construction control, staff training and site rehabilitation post construction. A monitoring and auditing plan for the construction and rehabilitation phases of the bridge, will be formulated to ensure that the mitigation measures, detailed in the Environmental Management Plan (EMP) are followed.

Elements of the PPP

The public will be invited to register as an IAP and take part in the PPP through:

- Media Notices placed in newspapers.
- Distribution of this Background Information Document (BID)
- Site notice boards
- Stakeholder meetings
- Public meeting (if necessary)
- Submission of comments on the media notices, BID and Draft Basic Assessment Report (BAR)

Note: All information is available on request.

How to Participate?

All Interested and Affected Parties (I&AP's) are invited to register, on the database managed by 1World Consultants by email or fax using the details provided.

Comments and recommendations regarding the proposed pipeline are welcome and may be addressed to:

Fatima Peer B.Sc. (Hons) Pr. Sci. Nat.

Tel: 031 262 8327

Fax: 086 726 3619

Postal: PO Box 2311, Westville, 3630

Email: fatima@oneworldconsultants.co.za





Figure 1 Locality Map of the Proposed Mbhele Bridge

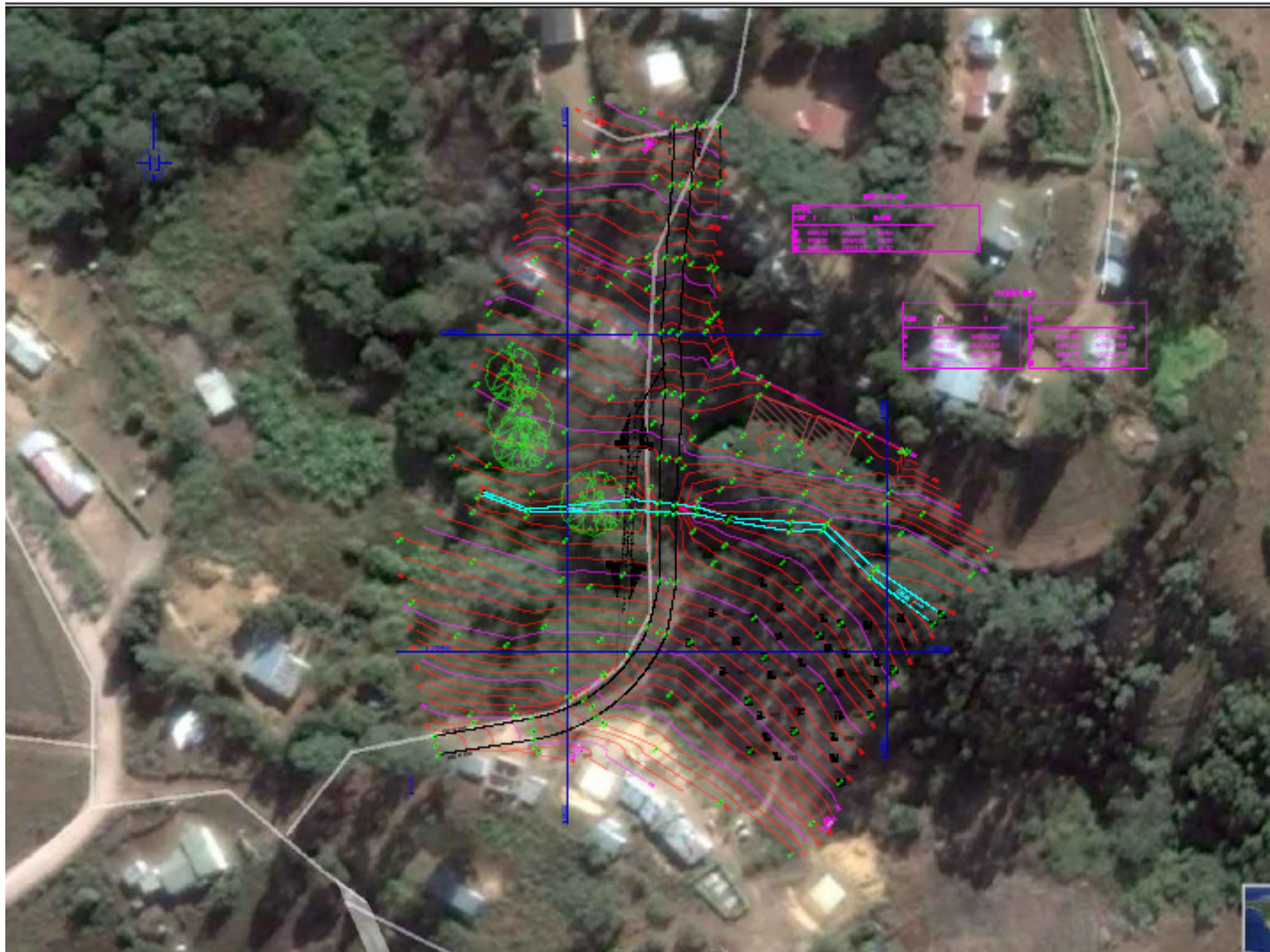


Figure 2: Proposed Layout of Dressing Bridge