
BACKGROUND INFORMATION DOCUMENT

SPRINGHAAS GRID CONNECTION

The proposed construction and operation of Springhaas Collector Substation A, a Collector/ Switching/ Transformation Substation with a Capacity of up to 400kV and associated infrastructure, near Dealesville, Bloemfontein, Free State (Collector Substation A)

GE39159

August 2022



Abbreviations / Acronyms / Definitions

List of Abbreviations and Acronyms	
BID	Background Information Document
DFFE	Department of Forestry, Fisheries and the Environment
EAP	Environmental Assessment Practitioner
EMPr	Environmental Management Programme
GA	General Authorisation
GN	Government Notice
I&APs	Interested and Affected Parties
kV	Kilovolt
kWh	Kilowatt Hour
NEMA	National Environmental Management Act, 1998 (Act No. 107 of 1998)
OHL	Overhead Line
REDZ	Renewable Energy Development Zone

1 Introduction

GIBB Environmental (Pty) Ltd (GIBB) has been appointed as the independent Environmental Assessment Practitioner (EAP) by the Proponent (ABO Wind renewable energies (Pty) Ltd) to undertake the required registration of the proposed Collector Substation A in terms of the *Standard for the Development and Expansion of Power Lines and Substations within Identified Geographical Areas, 2022*, as gazetted by GN 2313 of 2022 and promulgated under the National Environmental Management Act (Act 59 of 2008), as amended.

1.1 Purpose of this Background Information Document

This BID (background information document) will be distributed electronically to all stakeholders identified as potential Interested and Affected Parties (I&AP). The BID will be used to announce the project and provide a high-level overview of the project to stakeholders. The BID is intended to provide stakeholders with sufficient project information for them to decide if they consider themselves to be an Interested and Affected Party (I&AP) for the project. Stakeholders are required to register with the EAP (GIBB Environmental) at which point they will be added to the I&AP register (refer to **Section 2.3** for details of how to register).

1.2 Legal Context

Collector Substation A will be located in the Central Strategic Transmission Corridor as gazetted in Government Notice No. 113. The Strategic Transmission Corridors have already been subject to a Strategic Environmental Assessment which identified areas suitable for the development of grid connection infrastructure.

Due to its location within a Strategic Transmission Corridor an application for environmental authorisation is not required for Collector Substation A. The Proponent is however required to register the facility with the Department of Forestry, Fisheries and the Environment (DFFE) in-

line with the requirements of the *Standard for the Development and Expansion of Power Lines and Substation within Identified Geographical Areas (the Standards)*.

1.2.1 Relevance of the Standards

Prior to the gazetting of the *Standard for the Development and Expansion of Power Lines and Substation within Identified Geographical Areas* the development of Collector Substation A would have triggered the need to undertake an application for environmental authorisation in the format of a basic assessment report. With the promulgation of the new “standard” in July 2022, an application for environmental authorisation is not required. The project remains subject to assessment and the details of Collector Substation A are indicated (see Table 1) to demonstrate relevance for the registration process in terms of the newly gazetted Standard.

Table 1: Criteria for a registration process

No.	Requirement	Comment/ Applicability for the Proposed Development
1	The site must be located in areas identified by the national web based environmental screening tool as being of medium or low environmental sensitivity and confirmed to be such for identified environmental themes.	All the environmental sensitivity themes are rated as low to medium with the exception of palaeontology (high) and terrestrial biodiversity (very high). Specialist site sensitivity verifications have been undertaken for all identified environmental themes and all themes were confirmed to be of low or medium sensitivity in the identified grid corridor. Details will be provided in the Environmental Sensitivity Report.
2	The site must be located within a strategic transmission corridor, for the development or expansion of electricity transmission and distribution power line infrastructure and substations	Collector substation A is located in the Central Strategic Transmission Corridor and constitutes electricity transmission and distribution infrastructure.
3	The development triggers Listing Notice 1 activity 11, activity 47 or Listing Notice 2, activity 9.	Depending on the final technical design Collector substation A will either trigger: <ul style="list-style-type: none"> • Listing Notice 1, Activity 11; or • Listing Notice 3, Activity 9 More information will be provided in the Environmental Sensitivity Report.

1.3 Process and Timeline

The process of registering Collector Substation A in terms of the new standard follows 15 steps, detailed in Table 2 below.

Table 2: Registration process steps

No.	Requirement	Comment
1	Proponent to identify a preliminary corridor and substation sites using the national web based environmental screening tool (screening tool) and additional relevant spatial datasets, where available	The Proponent has identified a corridor and proposed site for Collector Substation A, which is of Medium to Low environmental sensitivity. Refer to Appendix A .
2	An independent environmental assessment practitioner (EAP) must be appointed to assist to identify a preliminary corridor, a proposed route, and substation sites.	The Proponent (ABO Wind renewable energies (Pty) Ltd) has appointed GIBB Environmental as the EAP.
3	The EAP, as a minimum, must follow the public participation process required in Chapter 6 of the EIA Regulations, excluding the requirements not relevant to the standard (as described in Chapter 2 of the standard)	The following public participation process will be undertaken: <ul style="list-style-type: none"> • Notification of stakeholders/ potential I&APs of the project • Placing a newspaper advert in one local newspaper • Placement of the BID and I&AP registration forms on a publicly accessible website • Maintaining a register of registered I&APs • Availing the Environmental Sensitivity Report to stakeholders for a 30-day comment period • Notifying registered I&APs of the availability of the final environmental sensitivity report • Informing I&APs within 14 days of a registration number being received and informing them of the opportunity to appeal
4	The EAP must appoint a specialist team to undertake a site verification and a walkthrough of specific areas; and prepare a preliminary database of possible stakeholders and interested and affected parties (I&APs) along the proposed route and near the substation sites	A specialist team has been appointed and site investigations are complete. A database of possible stakeholders and I&APs has been compiled.
5	The EAP must announce the proposed development or expansion by making available a background information document (BID) on a publicly accessible website and distributing it to identified stakeholders and I&APs identified on the database	This document is the BID for the proposed Collector Substation A. The BID has been made available on GIBB Environmental's website (https://gibbenvironmental.co.za/category/projects/).
6	The EAP and specialists must identify a proposed route within the	A site for Collector Substation A has been identified and approved by the landowner. The site has been

No.	Requirement	Comment
	preliminary corridor. The initial servitude negotiations must be undertaken in conjunction to ensure that the route is not fatally flawed in terms of servitude access.	assessed by the specialist team.
7	The EAP must compile an environmental sensitivity report, with specialist input, to document the process to identify the proposed route and the outcome of the initial servitude negotiations	The compilation of the environmental sensitivity report is underway with input from the specialist team.
8	Release the environmental sensitivity report to stakeholders for a 30-day comment period	Pending. The environmental sensitivity report will be made available on GIBB Environmental's website and Registered I&APs will be notified of the availability thereof.
9	The proposed route must be finalised based on comments received during the public participation process and refining the route, where relevant. The proposed route is then referred to as the final pre-negotiated route.	Pending. The environmental sensitivity report will be updated based on comments received during the public participation process.
10	A final environmental sensitivity report must be prepared, which maps the final pre-negotiated route including any mitigation devices, a record of comments and responses, Part C of the Generic EMPr (where applicable), and final confirming statements from the specialists	Pending. The final environmental sensitivity report, part C of the generic EMP and confirming statements from specialists will be prepared. These documents will be made available on GIBB Environmental's website.
11	Notify registered I&APs of the availability of the final environmental sensitivity report for information	Pending. Registered I&APs will be notified of the availability of the final environmental sensitivity report. The final environmental sensitivity report will be made available for information purposes only.
12	The proponent must submit the relevant registration form contained in the standard. It must include relevant supporting documents as specified in Chapter 2 of the standard.	Pending. The registration form will be submitted to DFFE with the relevant supporting documentation.
13	The competent authority must, within 30 days of receipt of the information submitted, issue a registration number or, indicate to the proponent that the submission is incomplete and identify the outstanding information	Pending.
14	Within 14 days of receipt of a registration number, all registered I&APs must be informed of the registration and the opportunity to appeal	Pending. GIBB Environmental will notify I&APs of the registration number and opportunity to appeal within 14 days of the number being received.
15	Proof of registration must be lodged with the relevant Local Municipality and Provincial Environmental Department; made available on	Pending. To be undertaken upon receipt of the registration number.

No.	Requirement	Comment
	request by any stakeholder or Authority; and made available, where the proponent or owner has a website, on such publicly accessible website.	

2 Background and Project Description

ABO Wind renewable energies (Pty) Ltd proposes the construction and operation of a grid connection to connect the Springhaas solar PV facilities located south-west of Dealesville in the Free State Province to add new capacity to the national electricity grid. In order for the Springhaas Solar PV facilities to evacuate the generated solar power to the national grid, a connection must be established between the solar PV facilities and the existing Eskom 400kV lines, namely the Beta/Delphi and Beta/Hydra lines located to the east and west of the solar PV facilities respectively.

The project is known as the Springhaas Grid Connection and would include development of the following:

- 1) Collector sub-stations/switching stations and associated auxiliary buildings (i.e. for control/storage/electrical infrastructure/components) x 2 each with a development footprint of up to 8Ha for the collector station (this includes auxiliary building), including but not limited to the construction of a new platform with an earth mat and civil works, as well as new infrastructure such as feeder bay/s, line bay/s, busbar/s, circuit breaker/s, bussection/s, and/or transformer/s, with various protection equipment.
- 2) Up to 7 (seven) overhead lines (OHL) connecting the Springhaas Solar PV Facilities to the collector/switching/transformation sub-stations, via single/double-circuit up to 275kV, mono pole lines, complete with structures, foundations, conductor, fibre layout, insulation, and assemblies.
- 3) Up to 2 (two) LiLo connections into the existing Eskom 400kV line, via a single/double-circuit power line of up to 400kV between the collector/switching/transformation substation/s and the Eskom 400kV line, complete with structures, foundations, conductor, fibre layout, insulation, and assemblies.

This BID is relevant to Collector Substation A. The other project components are covered by separate BIDs.

Table 3: Details of Collector Substation A

Name	Springhaas Collector/switching/transformation sub-station A (and auxiliary buildings)
Location	Western edge of Remainder of Farm Corneliasdal No. 45
Connection	Will collect multiple up to 275kV overhead lines (located within the grid corridor), potentially step-up to 400kV (if required), consolidated overhead lines would leave the collector sub-station for connection to the existing Eskom 400kV lines.
Capacity	Up to 400kV
Footprint	Up to approximately 8Ha, this includes auxiliary buildings
Height	Up to approximately 10m
Access	Accessed by an up to 6m wide access road. No new access roads are required. The access road for Springhaas Solar Facility 8 will be used (which is covered by the

2.1 Project Location

Collector Substation A would be located south-west of Dealesville, Free State, within the jurisdiction of the Tokologo Local Municipality, within the Lejweleputswa District Municipality. The site is located within the Kimberley Renewable Energy Development Zone and is also located within the Central Strategic Transmission Corridor. Refer to **Appendix A** for a Locality Map.

2.2 Screening Tool Report and Environmental Sensitivity

A screening tool report for Collector Substation A was drawn from the DFFE online tool on 29 June 2022. The tool identified the following sensitivities. The screening tool report is available in **Appendix B**. Specialist site sensitivity verifications have been undertaken for all the themes listed in Table 4, with the exception of civil aviation and defence theme. **The site sensitivity for all themes was confirmed as low to medium.** More information will be provided in the Environmental Sensitivity Report.

Table 4: Site environmental sensitivities as identified by the DFFE Screening Tool Report

Theme	Screening Tool Sensitivity Rating	Registration process approach
Agricultural	Medium	An agricultural specialist has completed the site sensitivity verification.
Animal species	High	An ecologist has completed the site sensitivity verification.
Aquatic biodiversity	Low	An aquatic ecologist has completed the site sensitivity verification.
Archaeological and cultural heritage theme	Low	An archaeologist has completed the site sensitivity verification.
Avian	N/A	An avifaunal specialist has completed the site sensitivity verification.
Bats	N/A	A bat specialist has completed the site sensitivity verification.
Civil Aviation	Low	N/A, no specialist study necessary
Defence theme	Low	N/A, no specialist study necessary
Palaeontology	High	A palaeontologist has completed the site sensitivity verification.
Plant species	Low	A botanist has completed the site sensitivity verification.
Terrestrial biodiversity	Very High	An ecologist has completed the site sensitivity verification.

The appointed team of specialists has completed the site sensitivity verifications. The key findings of these assessment will be incorporated into the environmental sensitivity report. The draft environmental sensitivity report will be made available for registered I&APs to review and provide comment on for a period of 30 days.

2.3 EAP Contact Details

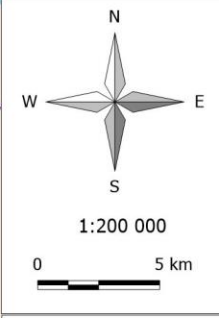
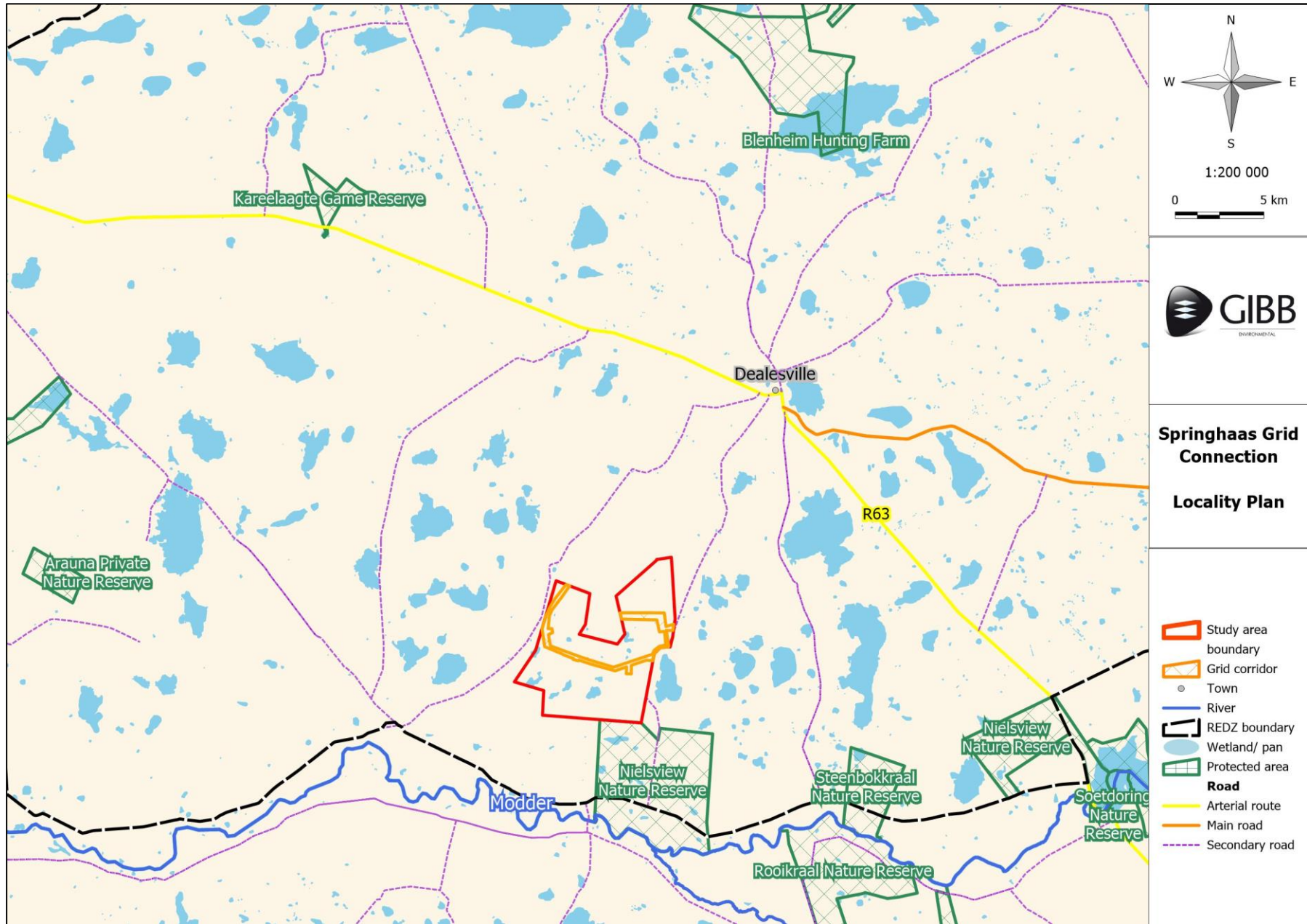
The EAP for the project, Ms Kate Flood can be contacted using the following details:

Table 5: EAP Contact Details

Contact name:	GIBB Environmental Public Participation Office FAO: Ms Kate Flood
Tel:	041 509 9160
Email (preferred method of communication):	publicparticipation@gibbenvironmental.co.za cc kflood@gibbenvironmental.co.za & zmakapela@gibbenvironmental.co.za
Address	GIBB Environmental 1 st Flood St. George's Corner 116 Park Drive Central Port Elizabeth PO Box 63703, Greenacres, Port Elizabeth

Registration requests must be emailed to GIBB Environmental using these contact details above. The registration form is included in **Appendix C**. Please include reference number GE39159 in the comments.

Appendix A. Locality Map and Layout Plan



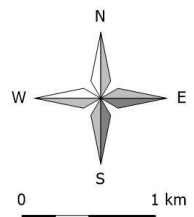
**Springhaas Grid Connection
Locality Plan**

-  Study area boundary
-  Grid corridor
-  Town
-  River
-  REDZ boundary
-  Wetland/ pan
-  Protected area
- Road**
-  Arterial route
-  Main road
-  Secondary road



Collector Substation A Layout Plan

-  Study area boundary
-  Grid corridor
-  Collector Substation A
-  Main access road
-  Solar PV facility



Appendix B. Screening Tool Report

**SCREENING REPORT FOR AN ENVIRONMENTAL AUTHORIZATION AS
REQUIRED BY THE 2014 EIA REGULATIONS – PROPOSED DEVELOPMENT
FOOTPRINT ENVIRONMENTAL SENSITIVITY**

EIA Reference number: N/A

Project name: Springhaas Grid Connection

Project title: Substation A

Date screening report generated: 29/06/2022 15:28:19

Applicant: ABO Wind Energies (Pty) Ltd

Compiler: Ziyanda Makapela

Compiler signature:
.....

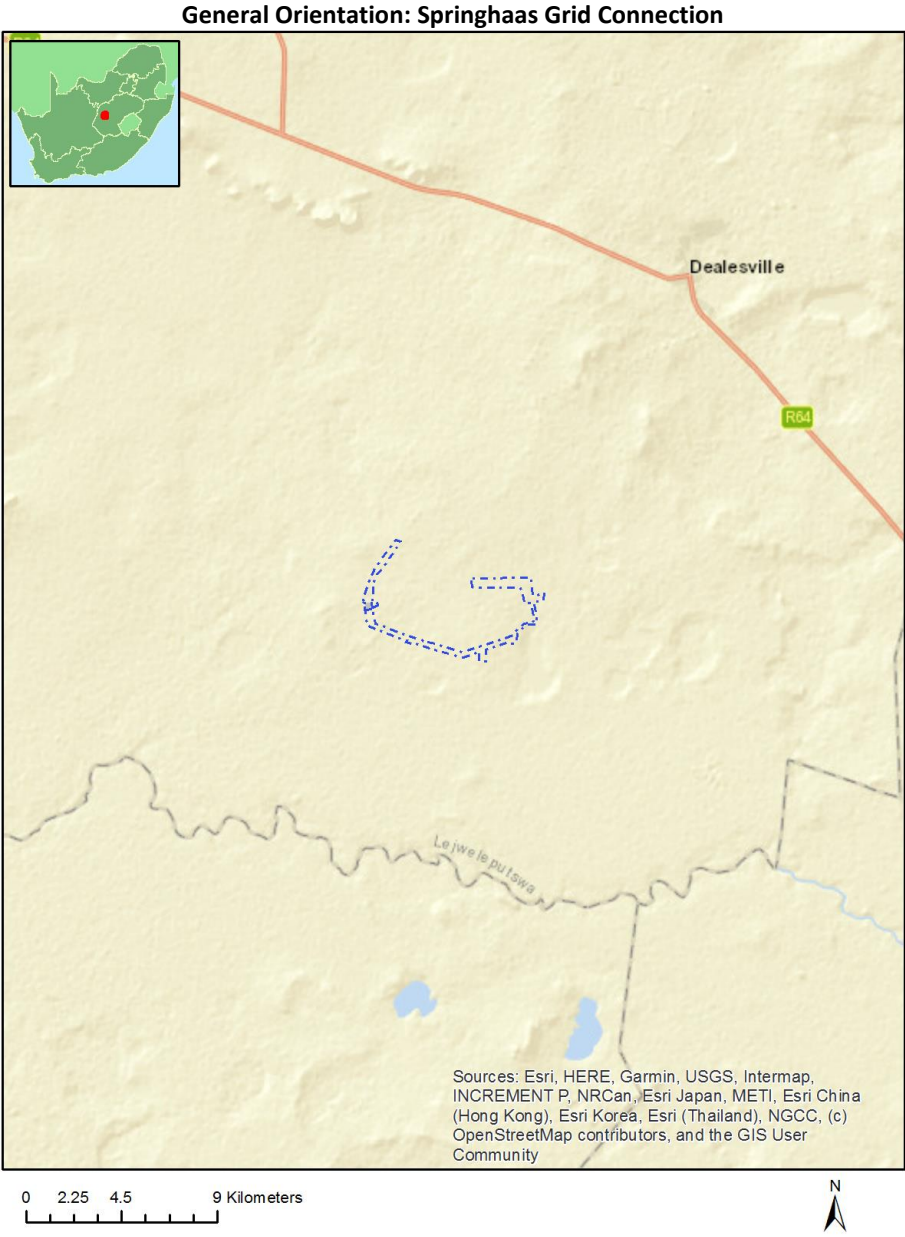
Application Category: Utilities Infrastructure | Electricity | Distribution and
Transmission | Substation

Table of Contents

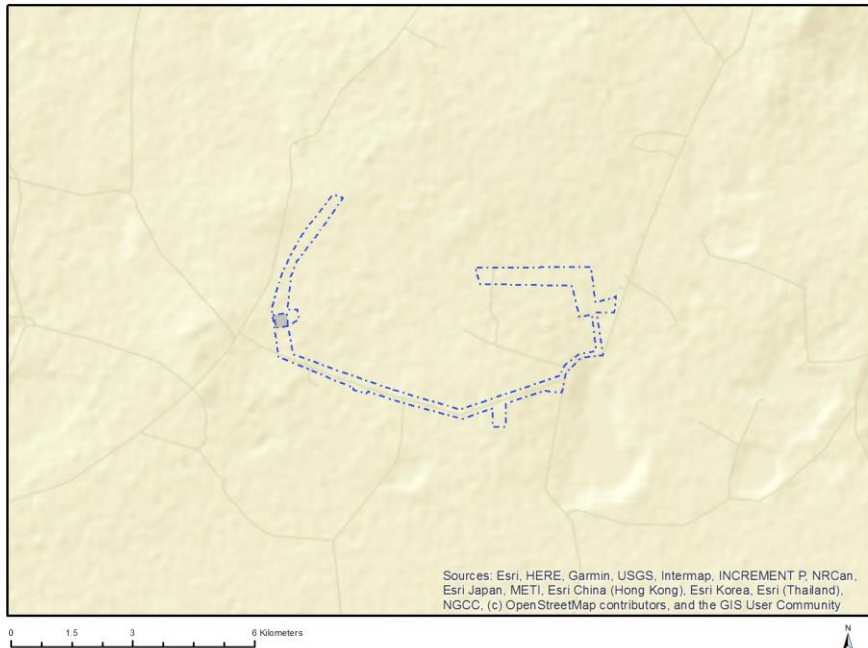
Proposed Project Location	3
Orientation map 1: General location	3
Map of proposed site and relevant area(s)	4
Cadastral details of the proposed site	4
Wind and Solar developments with an approved Environmental Authorisation or applications under consideration within 30 km of the proposed area	5
Environmental Management Frameworks relevant to the application	5
Environmental screening results and assessment outcomes	5
Relevant development incentives, restrictions, exclusions or prohibitions	5
Map indicating proposed development footprint within applicable development incentive, restriction, exclusion or prohibition zones	7
Proposed Development Area Environmental Sensitivity	7
Specialist assessments identified	8
Results of the environmental sensitivity of the proposed area	10
MAP OF RELATIVE AGRICULTURE THEME SENSITIVITY	10
MAP OF RELATIVE ANIMAL SPECIES THEME SENSITIVITY	11
MAP OF RELATIVE AQUATIC BIODIVERSITY THEME SENSITIVITY	12
MAP OF RELATIVE ARCHAEOLOGICAL AND CULTURAL HERITAGE THEME SENSITIVITY	13
MAP OF RELATIVE CIVIL AVIATION THEME SENSITIVITY	14
MAP OF RELATIVE DEFENCE THEME SENSITIVITY	15
MAP OF RELATIVE PALEONTOLOGY THEME SENSITIVITY	16
MAP OF RELATIVE PLANT SPECIES THEME SENSITIVITY	17
MAP OF RELATIVE TERRESTRIAL BIODIVERSITY THEME SENSITIVITY	18

Proposed Project Location

Orientation map 1: General location



Map of proposed site and relevant area(s)



Cadastral details of the proposed site

Property details:

No	Farm Name	Farm/ Erf No	Portion	Latitude	Longitude	Property Type
1	ALSACE	1181	0	28°47'9.42S	25°41'11.2E	Farm
2	SUNNYSIDE	918	0	28°49'41.14S	25°39'48.74E	Farm
3	DEALESRUST	922	0	28°48'35.5S	25°39'24E	Farm
4	OERTEL`S REST	1184	0	28°47'54.55S	25°41'18.87E	Farm
5	DEALESRUST	921	0	28°49'2.02S	25°39'33.72E	Farm
6	CORNELIASDAL	45	0	28°47'51.58S	25°38'8.15E	Farm
7	JOHANNA	1209	0	28°47'25.53S	25°42'23.82E	Farm
8	MORGENZON	938	0	28°49'36.09S	25°41'51.87E	Farm
9	DEALESRUST	921	0	28°49'0.13S	25°39'42.65E	Farm Portion
10	JOHANNA	1209	0	28°47'28.01S	25°42'22.99E	Farm Portion
11	CORNELIASDAL	45	0	28°47'50.69S	25°38'14.58E	Farm Portion
12	DEALESRUST	922	0	28°48'34.81S	25°39'30.23E	Farm Portion
13	OERTEL`S REST	1184	0	28°47'56.08S	25°41'17.98E	Farm Portion
14	SUNNYSIDE	918	0	28°49'40.1S	25°39'54.61E	Farm Portion
15	ALSACE	1181	0	28°47'11.54S	25°41'10.23E	Farm Portion
16	MORGENZON	938	0	28°49'36.09S	25°41'55.32E	Farm Portion

Development footprint¹ vertices:

Footprint	Latitude	Longitude
-----------	----------	-----------

¹ "development footprint", means the area within the site on which the development will take place and includes all ancillary developments for example roads, power lines, boundary walls, paving etc. which require vegetation clearance or which will be disturbed and for which the application has been submitted.

1	28°47'42.5S	25°37'46.77E
1	28°47'41.31S	25°37'57.05E
1	28°47'50.36S	25°37'58.03E
1	28°47'51.49S	25°37'48.11E
1	28°47'42.5S	25°37'46.77E

Wind and Solar developments with an approved Environmental Authorisation or applications under consideration within 30 km of the proposed area

No	EIA Reference No	Classification	Status of application	Distance from proposed area (km)
1	14/12/16/3/3/2/719	Solar PV	Approved	17.4
2	14/12/16/3/3/2/854	Solar PV	Approved	14.7
3	14/12/16/3/3/2/855	Solar PV	Approved	14.4
4	14/12/16/3/3/2/728	Solar PV	Approved	4
5	14/12/16/3/3/1/2155	Solar PV	Approved	25.3
6	14/12/16/3/3/2/755	Solar PV	Approved	19.7
7	14/12/16/3/3/2/851	Solar PV	Approved	14.7
8	14/12/16/3/3/2/720	Solar PV	Approved	20.9
9	14/12/16/3/3/2/727	Solar PV	Approved	9.4
10	14/12/16/3/3/2/853	Solar PV	Approved	14.7
11	14/12/16/3/3/2/726	Solar PV	Approved	9.4
12	14/12/16/3/3/1/2156	Solar PV	Approved	25.3
13	14/12/16/3/3/2/723	Solar PV	Approved	23.9
14	14/12/16/3/3/1/2154	Solar PV	Approved	25.3
15	14/12/16/3/3/2/852	Solar PV	Approved	14.4
16	14/12/16/3/3/2/724	Solar PV	Approved	11.1
17	14/12/16/3/3/2/718	Solar PV	Approved	14
18	14/12/16/3/3/2/722	Solar PV	Approved	9.4
19	14/12/16/3/3/2/717	Solar PV	Approved	13.4
20	14/12/16/3/3/2/721	Solar PV	Approved	19.7

Environmental Management Frameworks relevant to the application

No intersections with EMF areas found.

Environmental screening results and assessment outcomes

The following sections contain a summary of any development incentives, restrictions, exclusions or prohibitions that apply to the proposed development footprint as well as the most environmental sensitive features on the footprint based on the footprint sensitivity screening results for the application classification that was selected. The application classification selected for this report is:

Utilities Infrastructure | Electricity | Distribution and Transmission | Substation.

Relevant development incentives, restrictions, exclusions or prohibitions

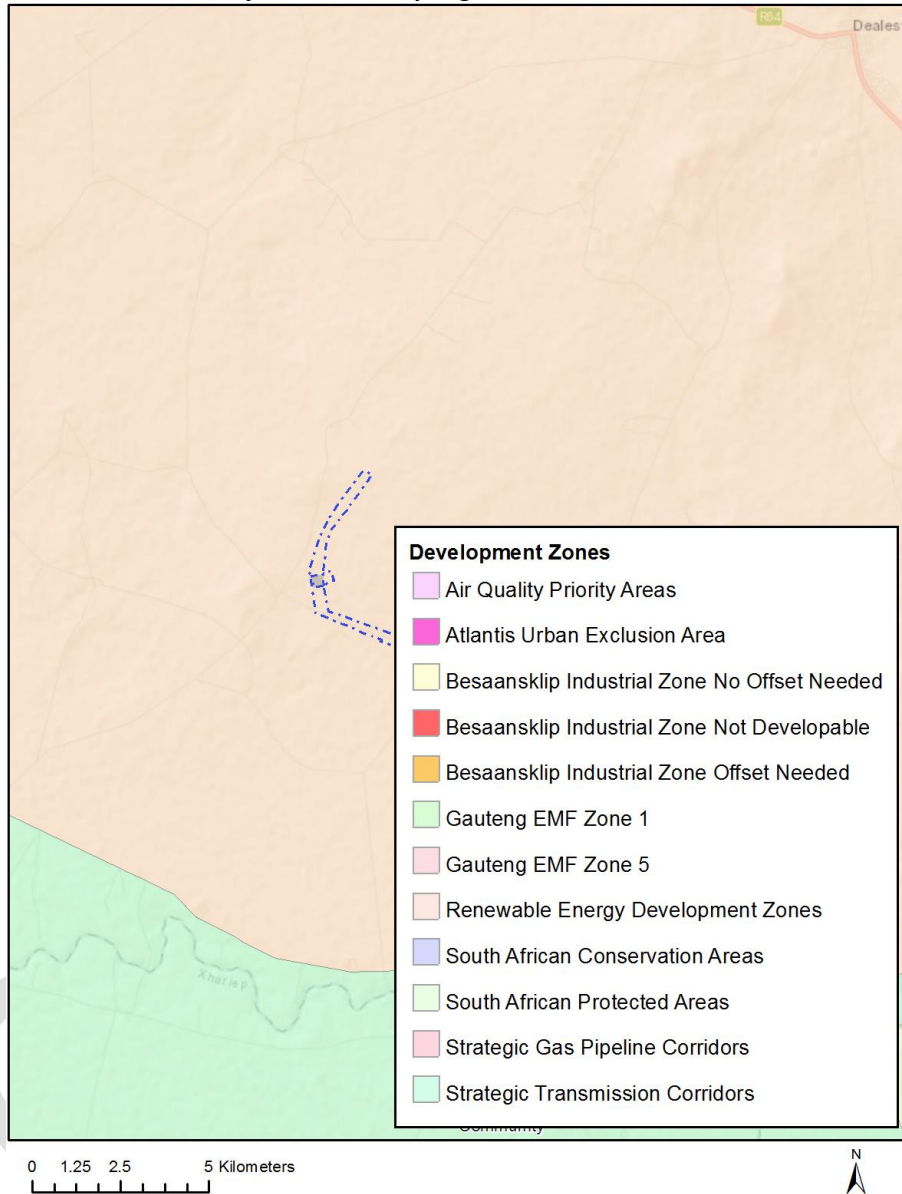
The following development incentives, restrictions, exclusions or prohibitions and their implications that apply to this footprint are indicated below.

Incentive, restriction or prohibition	Implication
Strategic Transmission Corridor-Central corridor	https://screening.environment.gov.za/ScreeningDownloads/DevelopmentZones/Combined_EGI.pdf
Renewable energy development zones 5-Kimberley	https://screening.environment.gov.za/ScreeningDownloads/DevelopmentZones/Combined_REDZ.pdf

OFFICIAL

Map indicating proposed development footprint within applicable development incentive, restriction, exclusion or prohibition zones

Project Location: Springhaas Grid Connection



Proposed Development Area Environmental Sensitivity

The following summary of the development footprint environmental sensitivities is identified. Only the highest environmental sensitivity is indicated. The footprint environmental sensitivities for the proposed development footprint as identified, are indicative only and must be verified on site by a suitably qualified person before the specialist assessments identified below can be confirmed.

Theme	Very High sensitivity	High sensitivity	Medium sensitivity	Low sensitivity
Agriculture Theme			X	
Animal Species Theme		X		

Aquatic Biodiversity Theme				X
Archaeological and Cultural Heritage Theme				X
Civil Aviation Theme				X
Defence Theme				X
Paleontology Theme		X		
Plant Species Theme				X
Terrestrial Biodiversity Theme	X			

Specialist assessments identified

Based on the selected classification, and the environmental sensitivities of the proposed development footprint, the following list of specialist assessments have been identified for inclusion in the assessment report. It is the responsibility of the EAP to confirm this list and to motivate in the assessment report, the reason for not including any of the identified specialist study including the provision of photographic evidence of the footprint situation.

N o	Specialist assessment	Assessment Protocol
1	Agricultural Impact Assessment	https://screening.environment.gov.za/ScreeningDownloads/AssessmentProtocols/Gazetted_General_Agriculture_Assessment_Protocols.pdf
2	Archaeological and Cultural Heritage Impact Assessment	https://screening.environment.gov.za/ScreeningDownloads/AssessmentProtocols/Gazetted_General_Requirement_Assessment_Protocols.pdf
3	Palaeontology Impact Assessment	https://screening.environment.gov.za/ScreeningDownloads/AssessmentProtocols/Gazetted_General_Requirement_Assessment_Protocols.pdf
4	Terrestrial Biodiversity Impact Assessment	https://screening.environment.gov.za/ScreeningDownloads/AssessmentProtocols/Gazetted_Terrestrial_Biodiversity_Assessment_Protocols.pdf
5	Aquatic Biodiversity Impact Assessment	https://screening.environment.gov.za/ScreeningDownloads/AssessmentProtocols/Gazetted_Aquatic_Biodiversity_Assessment_Protocols.pdf
6	Geotechnical Assess	https://screening.environment.gov.za/ScreeningDownloads/AssessmentProtocols/Gazetted_General_Requirement_Assessment_Protocols.pdf

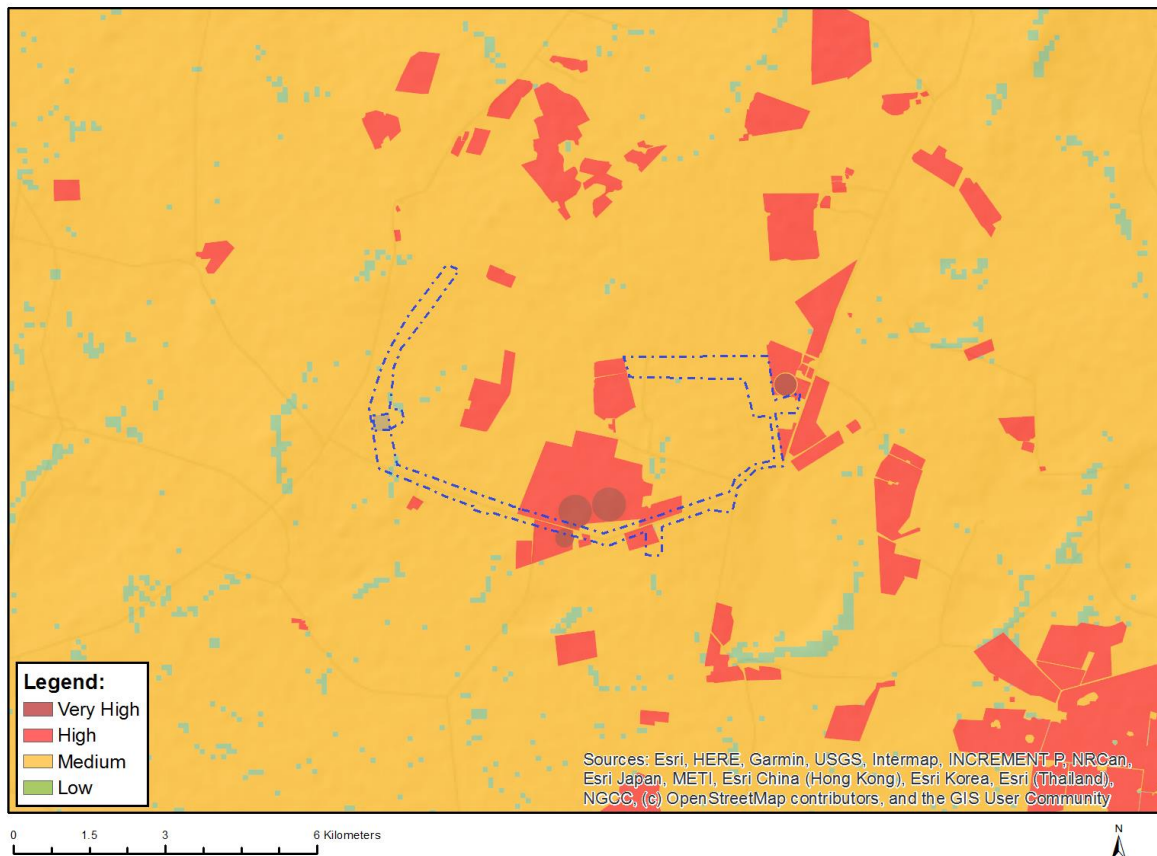
	ment	
7	Plant Species Assessment	https://screening.environment.gov.za/ScreeningDownloads/AssessmentProtocols/Gazetted_Plant_Species_Assessment_Protocols.pdf
8	Animal Species Assessment	https://screening.environment.gov.za/ScreeningDownloads/AssessmentProtocols/Gazetted_Animal_Species_Assessment_Protocols.pdf

OFFICIAL

Results of the environmental sensitivity of the proposed area.

The following section represents the results of the screening for environmental sensitivity of the proposed footprint for relevant environmental themes associated with the project classification. It is the duty of the EAP to ensure that the environmental themes provided by the screening tool are comprehensive and complete for the project. Refer to the disclaimer.

MAP OF RELATIVE AGRICULTURE THEME SENSITIVITY

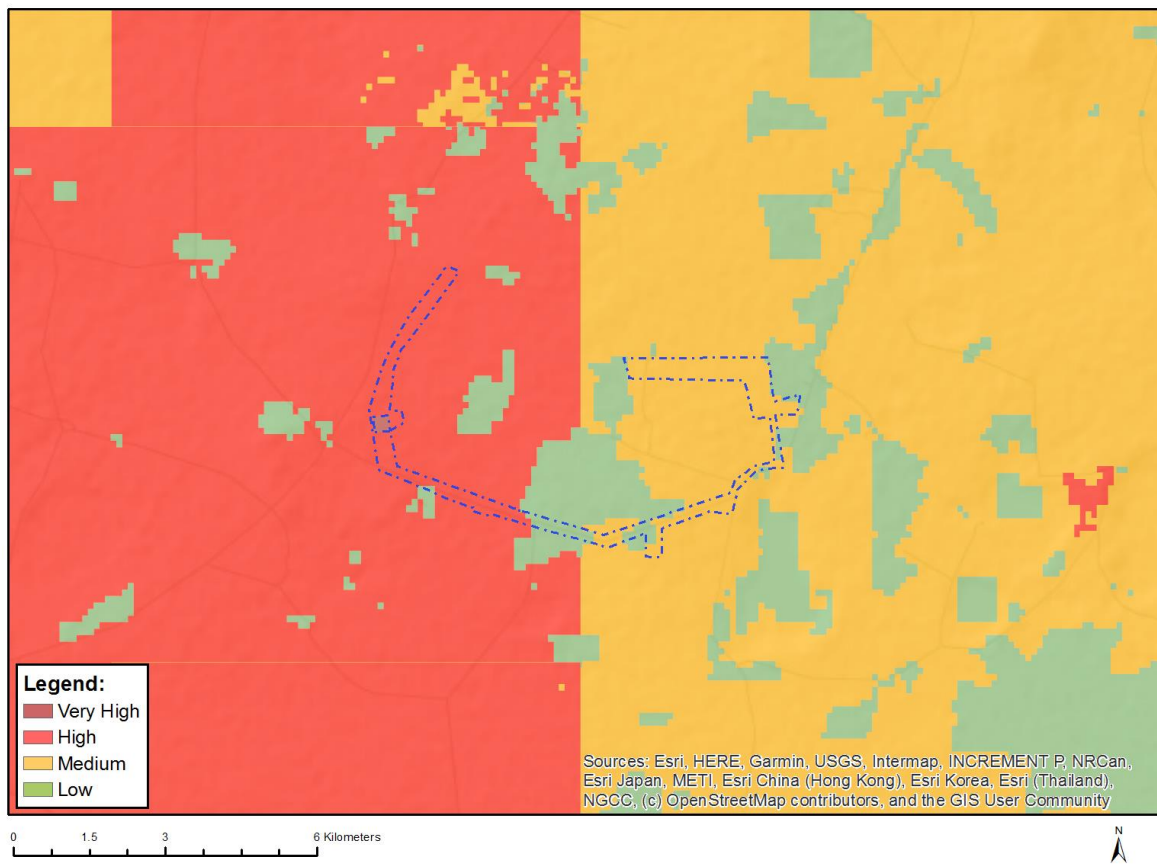


Very High sensitivity	High sensitivity	Medium sensitivity	Low sensitivity
		X	

Sensitivity Features:

Sensitivity	Feature(s)
Medium	Land capability;06. Low-Moderate/07. Low-Moderate/08. Moderate

MAP OF RELATIVE ANIMAL SPECIES THEME SENSITIVITY



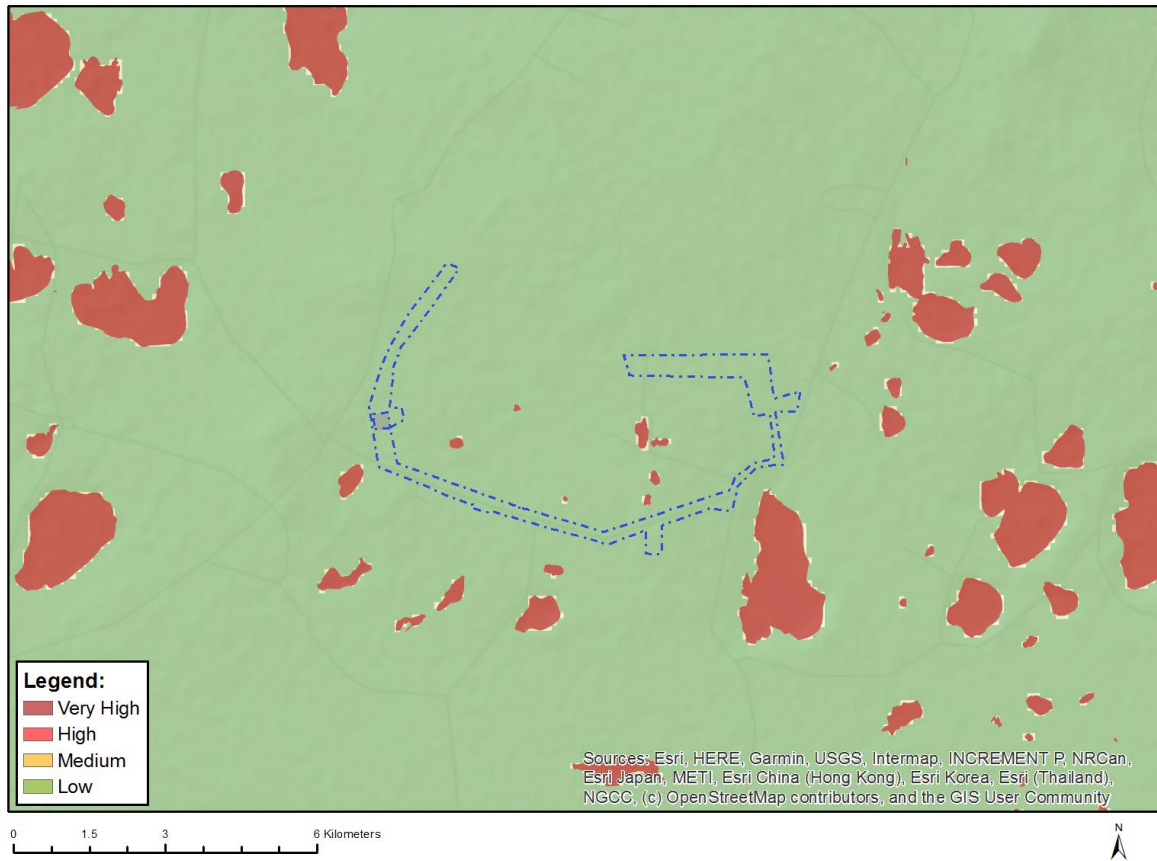
Where only a sensitive plant unique number or sensitive animal unique number is provided in the screening report and an assessment is required, the environmental assessment practitioner (EAP) or specialist is required to email SANBI at eiadatarequests@sanbi.org.za listing all sensitive species with their unique identifiers for which information is required. The name has been withheld as the species may be prone to illegal harvesting and must be protected. SANBI will release the actual species name after the details of the EAP or specialist have been documented.

Very High sensitivity	High sensitivity	Medium sensitivity	Low sensitivity
	X		

Sensitivity Features:

Sensitivity	Feature(s)
High	Aves-Neotis ludwigii

MAP OF RELATIVE AQUATIC BIODIVERSITY THEME SENSITIVITY

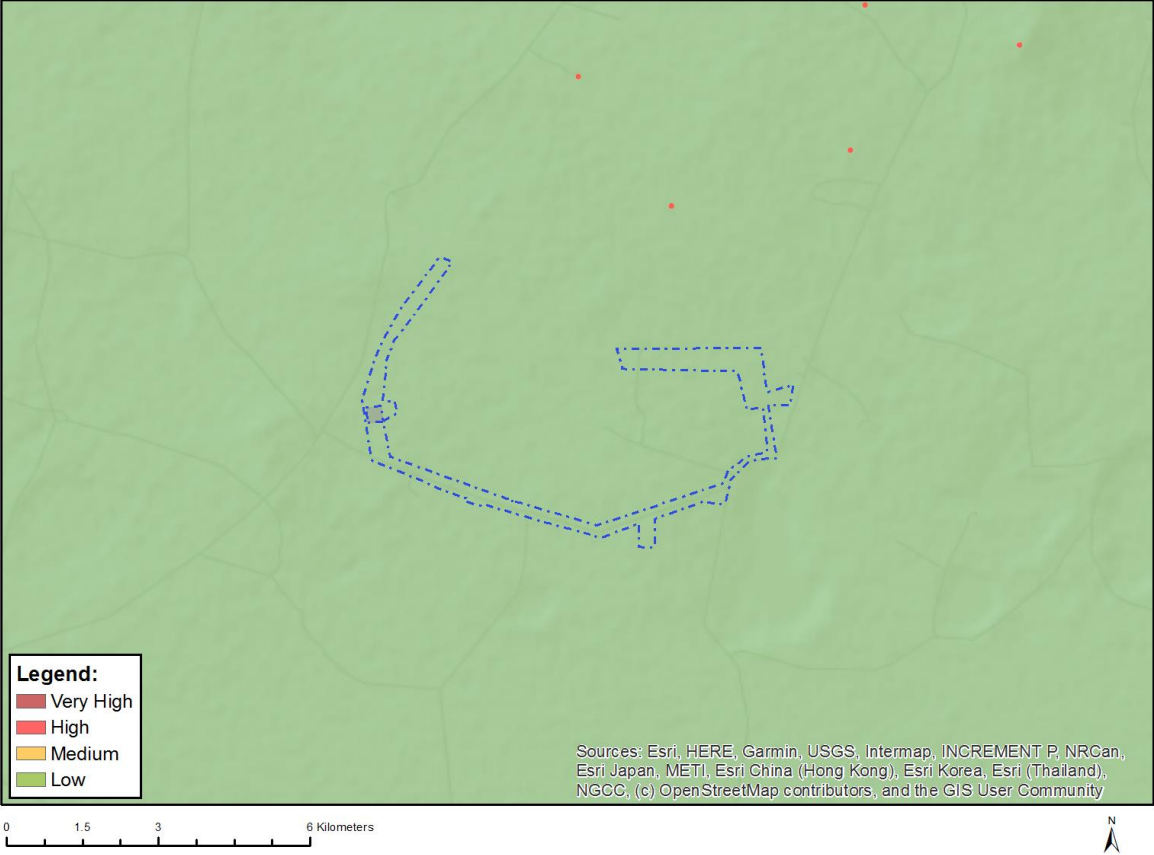


Very High sensitivity	High sensitivity	Medium sensitivity	Low sensitivity
			X

Sensitivity Features:

Sensitivity	Feature(s)
Low	Low sensitivity

MAP OF RELATIVE ARCHAEOLOGICAL AND CULTURAL HERITAGE THEME SENSITIVITY

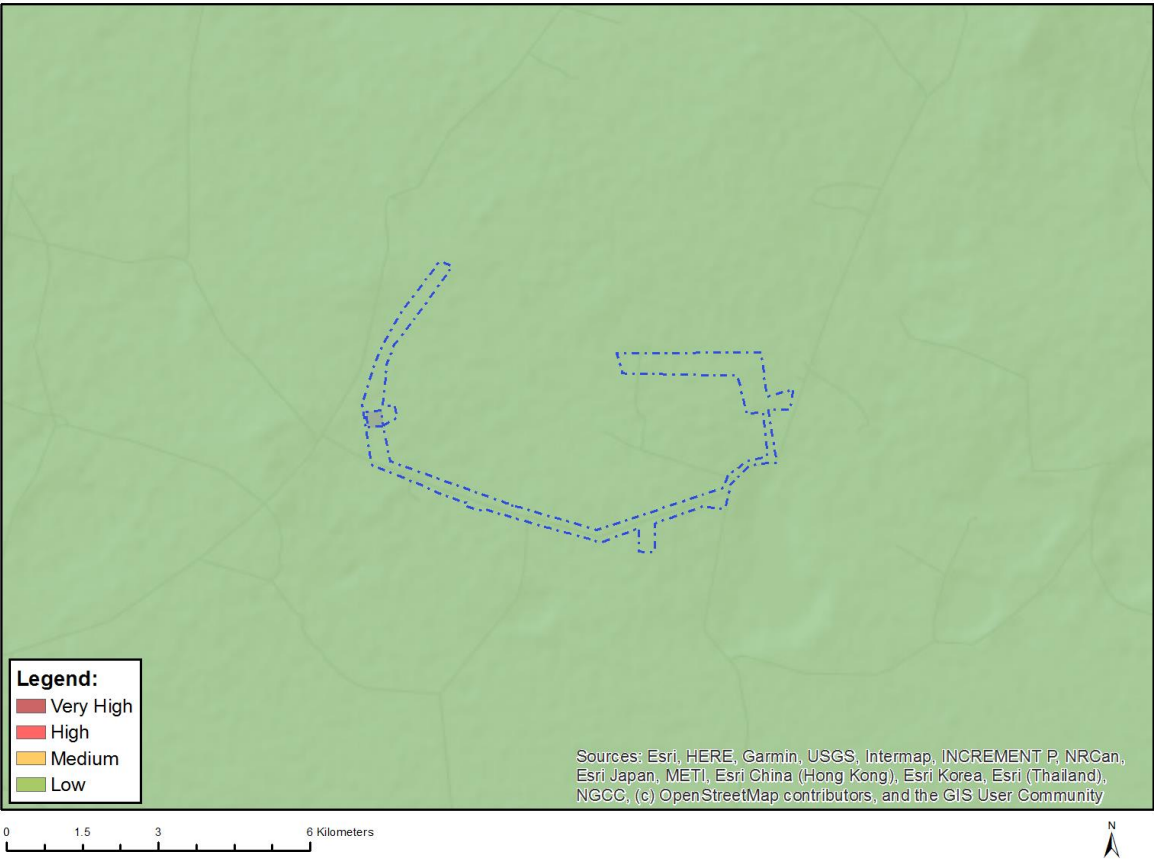


Very High sensitivity	High sensitivity	Medium sensitivity	Low sensitivity
			X

Sensitivity Features:

Sensitivity	Feature(s)
Low	Low sensitivity

MAP OF RELATIVE CIVIL AVIATION THEME SENSITIVITY

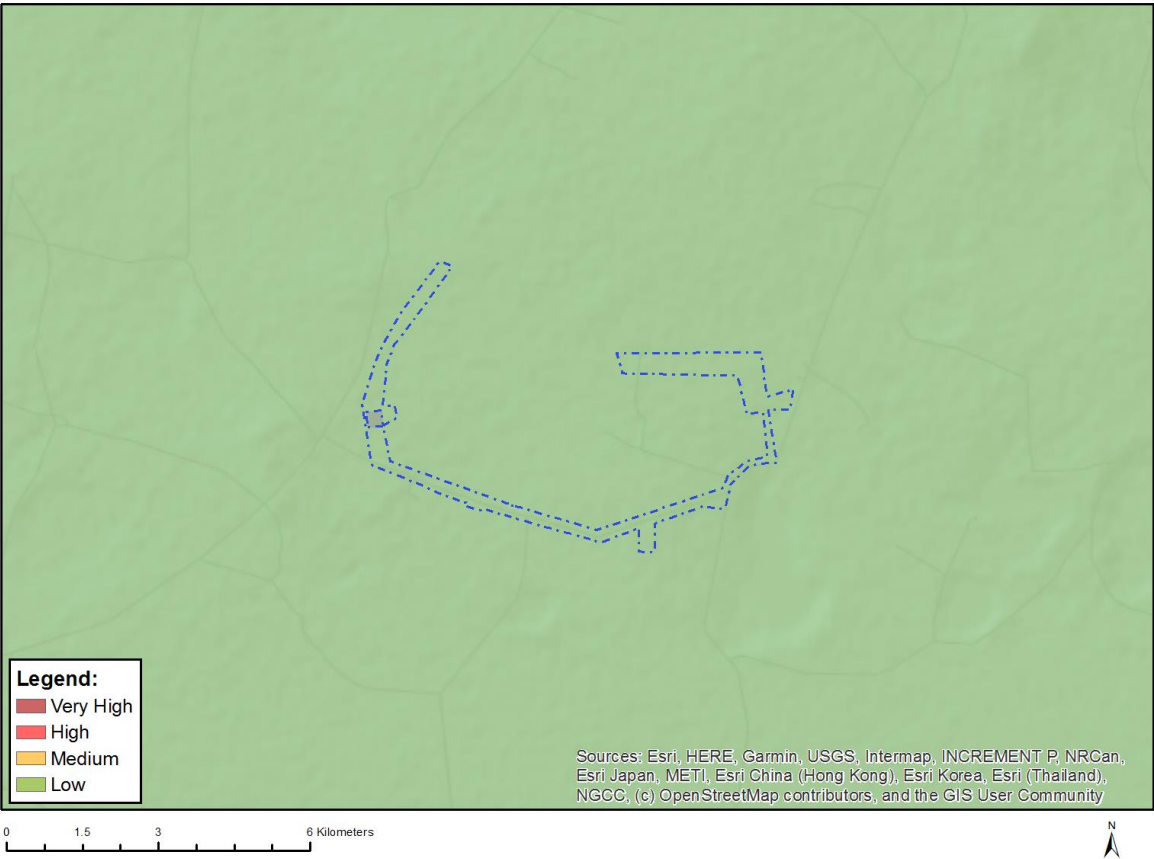


Very High sensitivity	High sensitivity	Medium sensitivity	Low sensitivity
			X

Sensitivity Features:

Sensitivity	Feature(s)
Low	Low sensitivity

MAP OF RELATIVE DEFENCE THEME SENSITIVITY

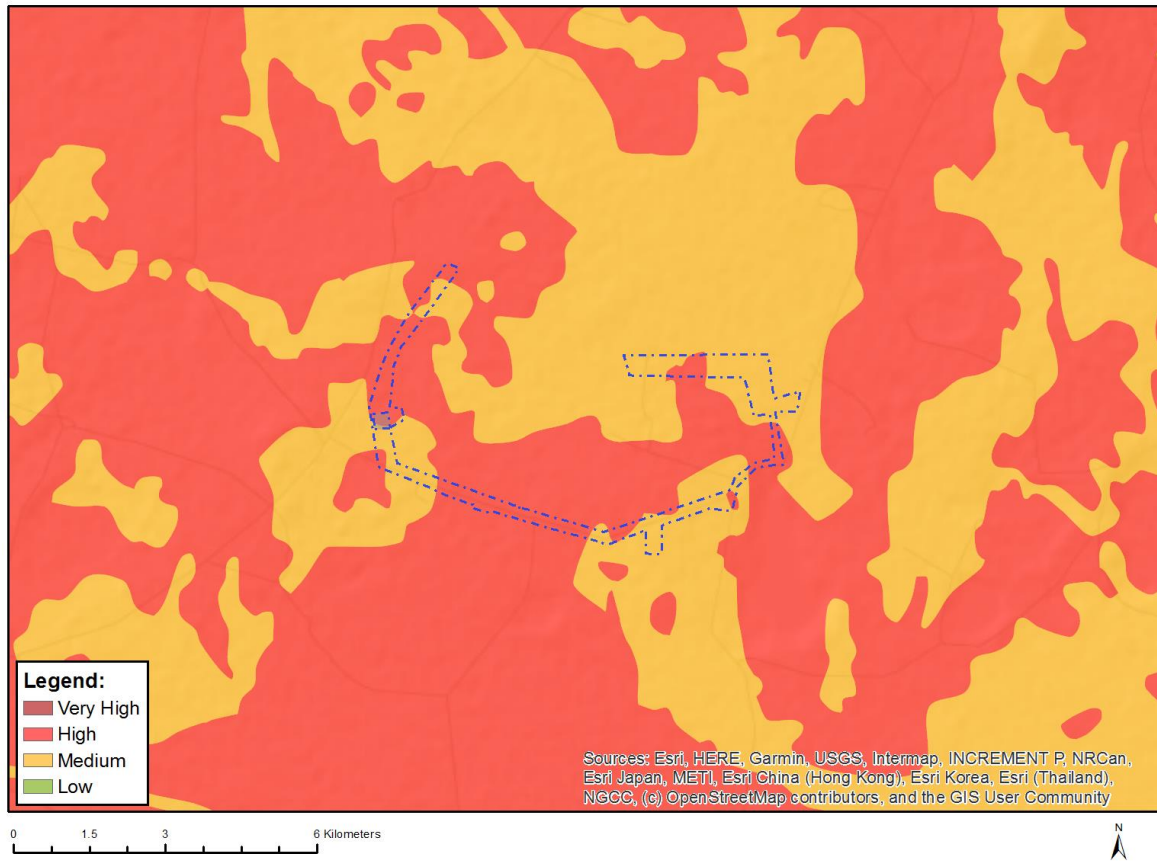


Very High sensitivity	High sensitivity	Medium sensitivity	Low sensitivity
			X

Sensitivity Features:

Sensitivity	Feature(s)
Low	Low Sensitivity

MAP OF RELATIVE PALEONTOLOGY THEME SENSITIVITY

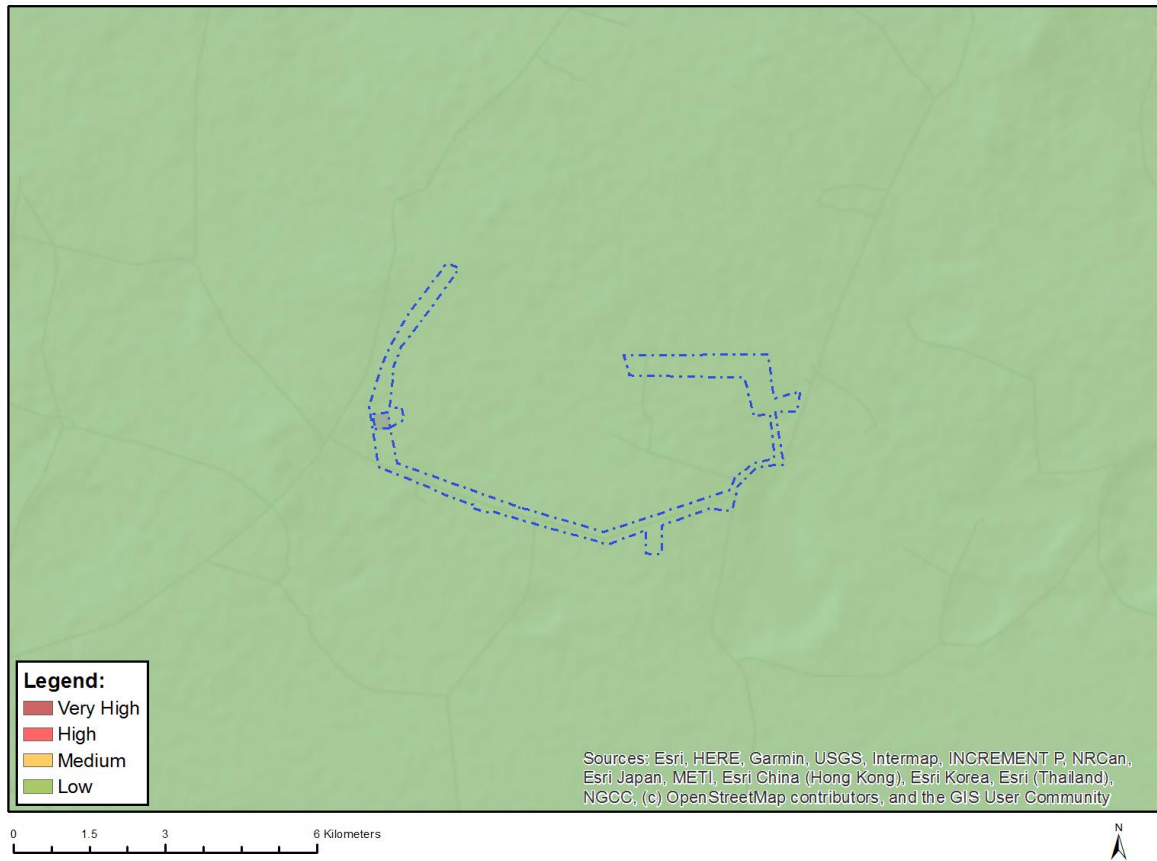


Very High sensitivity	High sensitivity	Medium sensitivity	Low sensitivity
	X		

Sensitivity Features:

Sensitivity	Feature(s)
High	Features with a High paleontological sensitivity
Medium	Features with a Medium paleontological sensitivity

MAP OF RELATIVE PLANT SPECIES THEME SENSITIVITY



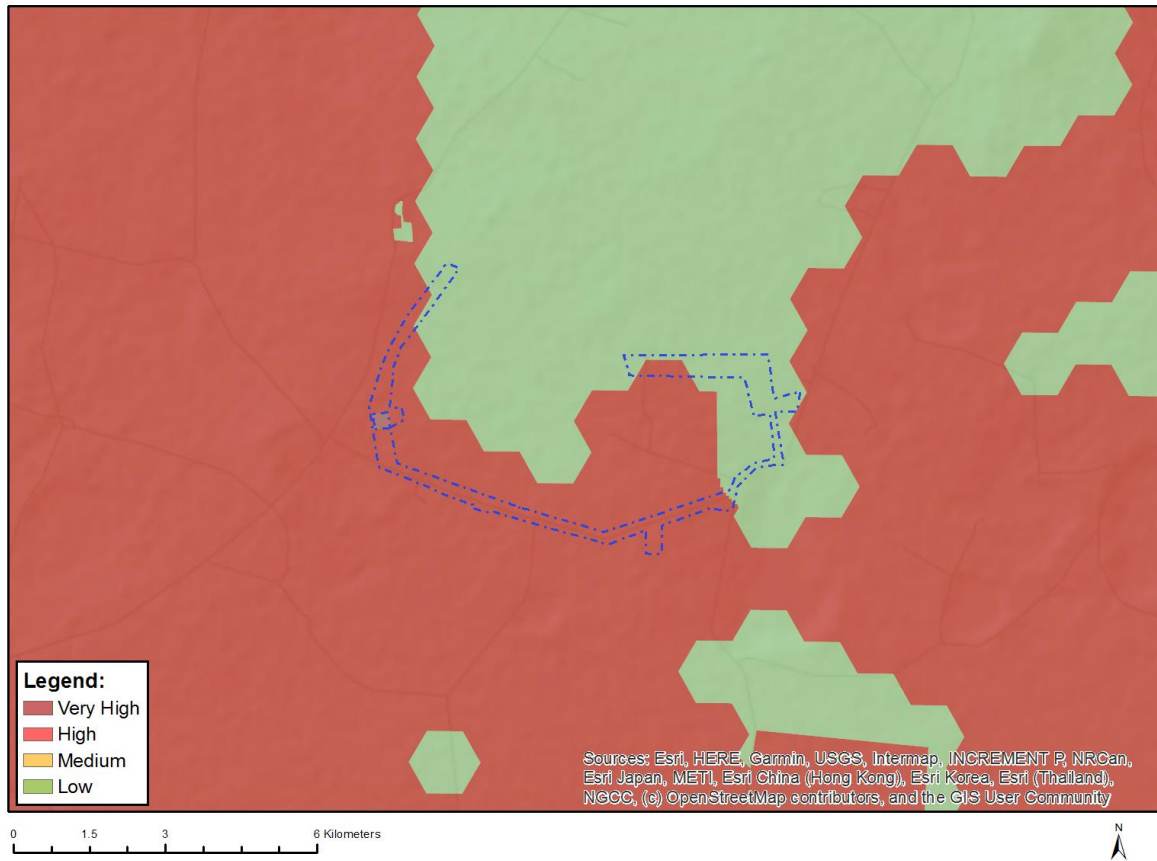
Where only a sensitive plant unique number or sensitive animal unique number is provided in the screening report and an assessment is required, the environmental assessment practitioner (EAP) or specialist is required to email SANBI at eiadatarequests@sanbi.org.za listing all sensitive species with their unique identifiers for which information is required. The name has been withheld as the species may be prone to illegal harvesting and must be protected. SANBI will release the actual species name after the details of the EAP or specialist have been documented.

Very High sensitivity	High sensitivity	Medium sensitivity	Low sensitivity
			X

Sensitivity Features:

Sensitivity	Feature(s)
Low	Low Sensitivity

MAP OF RELATIVE TERRESTRIAL BIODIVERSITY THEME SENSITIVITY



Very High sensitivity	High sensitivity	Medium sensitivity	Low sensitivity
X			

Sensitivity Features:

Sensitivity	Feature(s)
Very High	Ecological support area 1

Appendix C. I&AP Registration Form

INTERESTED AND AFFECTED PARTY REGISTRATION SHEET


Name						
Organisation						
Telephone number						
Physical address						
Postal address						
Fax number						
Email address						
Project to be registered on (please select all that are applicable)	Collector substation A		Collector substation B		LiLo 1	
	LiLo 2		Line 1		Line 2	
	Line 3		Line 4		Line 5	
	Line 6		Line 7		All projects	

Please state your interest (i.e. direct business, financial, personal or other interest) with respect to the approval or refusal of the registration of the proposed Springhaas Grid Connection application. In your response please indicate which project/s the comments relate to.

Please state any concerns, suggestions and/or potential impacts that should be considered during the Grid Connection Application Process. In your response please indicate which project/s the comments relate to.

I&AP Registration and Comments to be submitted to GIBB Environmental using the details below:

Attention: Kate Flood
 Tel: 041 509 9160
 Email: publicparticipation@gibbenvironmental.co.za



The Public Participation Office is open during office hours from Monday to Friday, excluding Public Holidays