



**mineral resources**

---

Department:  
Mineral Resources  
**REPUBLIC OF SOUTH AFRICA**

**ENVIRONMENTAL BASIC ASSESSMENT PROCESS  
OF THE PROPOSED PROSPECTING RIGHTS IN  
VOGELSTRUISKRAAL 400 KQ, BOJANALA  
PLATINUM DISTRICT MUNICIPALITY, NORTH WEST  
PROVINCE**

**Name of Applicant: Opeo Resources (Pty) Ltd**

**DMR Reference no.: NW 30/5/1/1/2/12224 PR**

## INTRODUCTION

The proposed development requires environmental authorisation from the North West Department of Mineral Resources (DMR) which will be carried out under the Environmental Impact Assessment Regulations which were promulgated and came to effect in December 2014 under the National Environmental Management Act - NEMA (Act 107 of 1998) as amended. All relevant legislation will be consulted during the Basic Assessment process and will be complied with at all times.

Opeo Resources (Pty) Ltd Public Participation (PP) team has approached this proposal with a great deal of experience in under-taking Basic Assessment Process. Opeo Resources (Pty) Ltd have a team of specialists with the capacity and background to undertake the fieldwork and compile the reports in the required timeframes.

## PURPOSE OF THIS DOCUMENT

The purpose of this Background Information Document (BID) is to provide information to interested and/or affected parties (I&APs) about the Basic Assessment process for the proposed project which is located on farm Vogelstruiskraal 400 KQ, situated in the magisterial district of Bojanala Platinum, North West Province, South Africa.

In addition to supplying information about the proposed project and Basic Assessment process being undertaken. This BID will also provide I&APs with the opportunity to:

- Duly register as an Interested and Affected Parties in the public participation process;
- understand the environmental authorisation process in order to participate effectively;
- raise issues of concern and/or submit suggestions to enhance the proposed project; and
- contribute local knowledge.

## PROJECT BACKGROUND

The proposed project is located on farm Vogelstruiskraal 400 KQ, situated in the local district of Bojanala Platinum, North West Province, South Africa. As part of the Basic Assessment process, an environmental authorisation is required. The need of the Basic Assessment process was determined through envisaged environmental impacts at the proposed locality that would need to be assessed and mitigation measures to be put in place prior to activity commencement.

As such, there would be several environmental specialist studies would be undertaken so to assess the envisaged impacts that might arise with the establishment of the proposed development. Below are the proposed specialist studies that would form part of the Basic Assessment process:

- Biodiversity Assessment; and
- Wetland (Surface Water) Assessment

## PROJECT LOCATION

The proposed project is located on farm Vogelstruiskraal 400 KQ, situated in the local district of Bojanala Platinum, North West Province. The site situated in the northern part of the Bojanala Platinum District Municipal area, ± 75km north of Rustenburg CBD. **(Refer to Figure 1)**

## BASIC ASSESSMENT PROCESS

### What is a Basic Assessment?

Basic Assessment is a process that is undertaken as per of the Environmental Impact Assessment. Its primary aim is that of collecting, organising, analysing and communicating information that is relevant for the consideration of a particular application. Basic Assessment Process is undertaken to identify any envisaged impacts on the receiving environment of the proposed development.

Basic Assessment is used by planning authorities/developers to obtain an independent and objective view of the potential environmental (biophysical and social) impacts that could arise during the construction and operation of the proposed development. This information needs to provide the Competent Authority with a sound basis for their decision-making. The assessed information should be comprehensive that the Competent Authority could grant authorisation for the proposed development to continue

## **National Environmental Management Act (NEMA) and Triggered Activities**

The proposed development requires compliance with the Environmental Impact Assessment (EIA) Regulations of 2014, promulgated in terms of the National Environmental Management Act, Act 107 of 1998, as amended. The proposed activity requires a Basic Assessment Process be undertaken as listed under **Government Notice No R. 983 Listing Notice 1, Activities 19**

## **PUBLIC PARTICIPATION PROCESS**

The public participation process during the Basic Assessment process will enable I&APs to influence the course of the technical investigations and to review the findings of the independent studies that are undertaken. The environmental consultants will correspond directly with registered I&APs at various stages during the process to keep them informed of progress in the study and the timing of opportunities to be involved. The steps in the public participation process are outlined below:

- Letters of invitation accompanied by this BID and comment sheet to be distributed to adjacent landowners within 100m from the area of the proposed development, key individuals and organisations, announcing the project and inviting their Comment
- Advertisement in Local newspaper announcing the proposed project and providing opportunity to comment.
- Site notices to be erected at strategic places along the property in accordance with the requirements of the EIA Regulations, in order to announce the project.
- Key stakeholders in the area will be informed by telephone, e-mail or facsimile.
- All issues received from stakeholders will be captured in the issues and response report (I&RR) which will be used to screen and prioritise issues for evaluation.

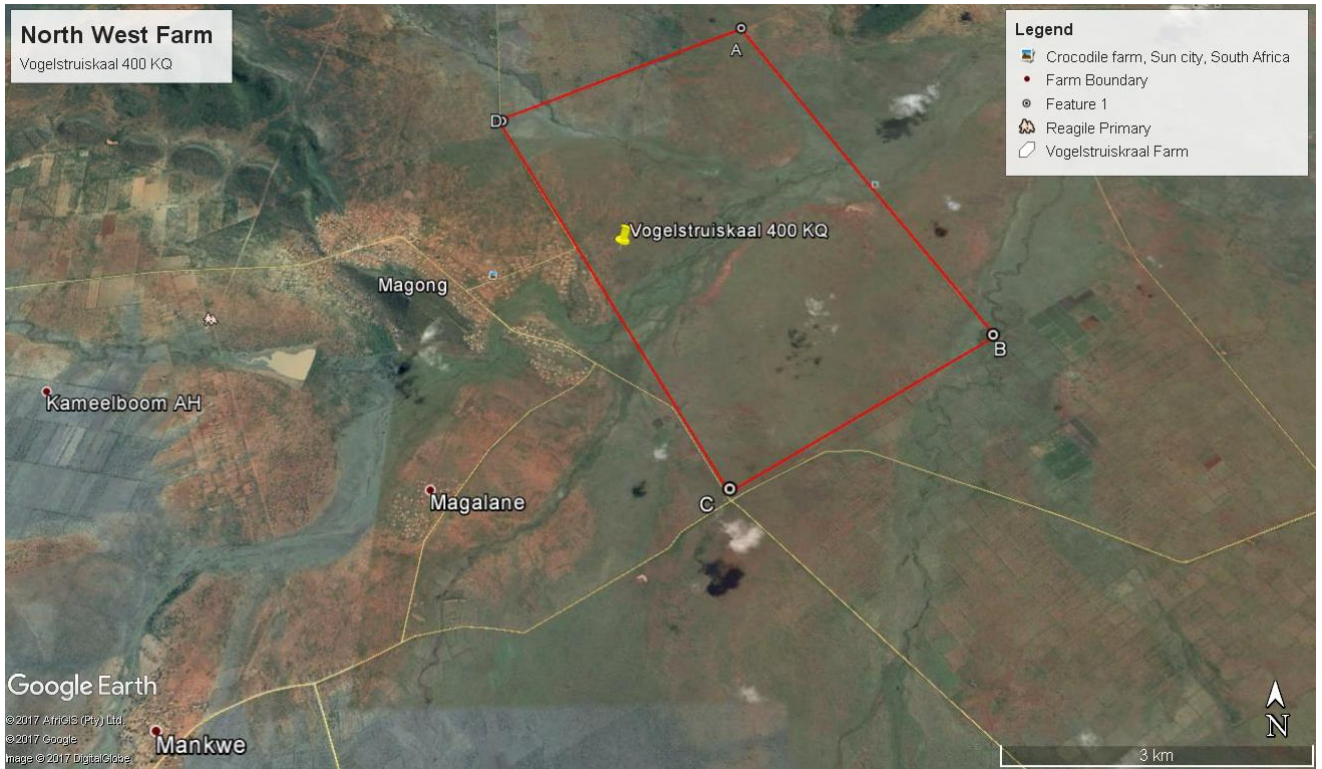
## **YOUR COMMENTS ARE IMPORTANT**

Your comments will ensure that all relevant issues are evaluated in the Basic Assessment. You are requested to complete the enclosed registration form and comment sheet. Use the contact details below in this document to make any commenting methods

### **How to become involved**

- Respond (by phone, fax or e-mail) to our invitation for your participation, which has been advertised in the printed media.
- Mail, fax or e-mail the attached Registration and Comment Form to Opeo Resources (Pty) Ltd;
- Contact us telephonically should you have a query, comment or require further project information.

By completing and submitting the accompanying Registration and Comment Form, you automatically register yourself as an I&AP for this proposed project, ensuring that your comments and/or concerns raised regarding the proposed project will be noted. The public participation consultants will respond to all comments and queries received during the course of the project.



**Figure 1: Locality Map**

Details to be used when registering as an Interested and Affected party.

**Opeo Resources (Pty) Ltd**  
**Person: Lufuno Nengwani**  
 Fax: 086 697 9452  
 Email: lnengwani@multiviewinv.co.za  
 Postal: P.O Box 4077, Halfway House, 1685