



Emvelo Quality and Environmental consultant (PTY) Ltd
Promenade Building, 1st Floor, Unit D2, 24 Lira Link CBD,
Richards Bay, 3900. P.O. Box 101672, Meerensee, 3901

BACKGROUND INFORMATION DOCUMENT

**THE PROPOSED CULTIVATION OF LAND FOR
THE PLANTATION OF SUGARCANE ON THE
WILTON PARK FARM, WITHIN THE
JURISDICTION OF THE CITY OF UMHLATHUZE
MUNICIPALITY, KING CETSHWAYO DISTRICT,
KWAZULU-NATAL.**

DECEMBER 2020

Prepared by:

**Emvelo Quality and Environmental
Consultant (PTY) Ltd**

On Behalf of:

Zululand Nguni (PTY) Ltd



INTRODUCTION

Zululand Nguni (PTY) Ltd proposes to cultivate land for the plantation of sugarcane on the Wilton Park Farm, within the jurisdiction of the City of uMhlathuze, King Cetshwayo District, KwaZulu-Natal.

Therefore, an environmental impact assessment (EIA) has commenced, assisting the developer in identifying all potential adverse environmental consequences of the project, their extent, significance and to ensure that the environmental management requirements are adequately implemented.

The purpose of this Background Information Document (BID) is to provide you, as an Interested or Affected Party (I&AP), with a brief description of the EIA process to be undertaken and to obtain comments and contributions from I&AP's with regards to the potential impacts to the environment by the proposed project.

PROJECT DESCRIPTION

Zululand Nguni (PTY) Ltd proposes to cultivate land for the plantation of sugarcane on the Wilton Park Farm, within the jurisdiction of the City of uMhlathuze, King Cetshwayo District, KwaZulu-Natal. This will require the clearance of 17.8ha of indigenous vegetation. The farmer also

intends to clear some alien invasive plants that are within the farm, along the Mandozi River, an unnamed stream and a few national wetlands.

The total size of the farm is 65ha, and it is located on Portion 2 of the Remainder Farm 11484 at the Wilton Park Farm, 1km North-East of Empangeni Town.

PROJECT LOCATION

The site co-ordinates are as follows:

Lat/Long	Degrees	Minutes	Seconds
South	28°	43'	10.57"
East	31°	53'	51.05"

WHAT IS AN ENVIRONMENTAL IMPACT ASSESSMENT?

An EIA is an effective planning and decision-making tool, which allows for the identification of potential adverse environmental consequences of a proposed project, and its management through the planning process.

In terms of the National Environmental Management Act, 1998 (Act No.107 of 1998), as read with the Environmental Impact Assessment (EIA) Regulations of 2014 as amended in 2017, an Environmental Authorization must be obtained from the relevant decision-making authority, the

Department of Economic Development, Tourism and Environmental Affairs (DEDTEA), prior to the commencement of any of the listed activities that may result in potential negative impacts on the environment. Thus, an environmental impact assessment is required. A Basic assessment that includes the public participation process will be performed.

In terms of the Environmental Impact Assessment (EIA) regulations, an independent Environmental Assessment Practitioner must be appointed to conduct the EIA. Therefore, Emvelo Consultant has been appointed to conduct the EIA. Emvelo will identify and assess the potential environmental impacts associated with the proposed activity by conducting an objective and independent EIA in which all the relevant information and opinions of Interested and Affected Parties (IAPs) will be collected and passed on to the Department of Economic Development Tourism and Environmental Affairs (EDTEA). In this way, an informed decision-making process can take place.

ENVIRONMENTAL IMPACT ASSESSMENT PROCESS

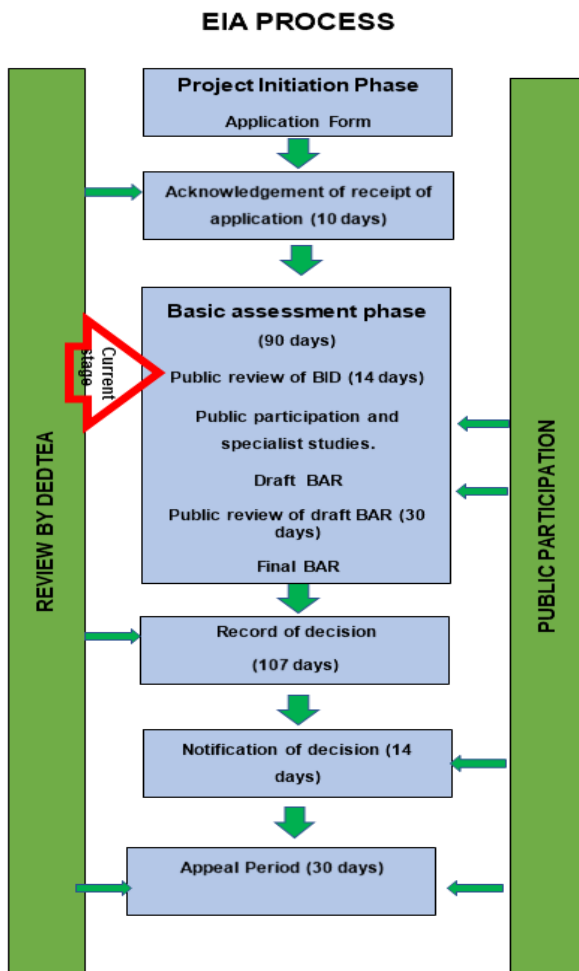


Figure 1: EIA process

LISTED ACTIVITIES TRIGGERED BY THIS PROJECT

The proposed project triggers the following listed activities of the Listing Notices;

Table 1: Listed Activities

LISTING NOTICE	ACTIVITY	DESCRIPTION OF ACTIVITY
1	27	The clearance of an area of 1 Hectares or more, but less than 20 hectares of indigenous vegetation, except where such clearance of indigenous

LISTING NOTICE	ACTIVITY	DESCRIPTION OF ACTIVITY
		vegetation is required for – i).The undertaking of linear activity; or ii).Maintenance purposes undertaken in accordance with a maintenance management plan.

government authorities and the general public will be gathered to result in a better understanding of the project for all involved thus ensuring an informed decision-making throughout the process.

REGISTRATION OF INTERESTED AND AFFECTED PARTIES.

Any person, company, authority or other entity that might be directly or indirectly affected by the proposed activity is invited to register as an I&AP, in order to assist the EAP in identifying possible environmental, economic and social impacts of the proposed development and to make suggestions for mitigations. These comments will be included as part of the Basic assessment report which will be submitted to the Department of Economic Development, Tourism and Environmental Affairs (EDTEA) for consideration.

WHAT IS PUBLIC PARTICIPATION?

Public participation is the process that promotes information sharing, consultation and active involvement amongst stakeholders and all interested and affected parties.

During the Public Participation Process, input from the proponent, technical experts,

I&APs may forward their written comments along with their contact details within 14 days from receiving the document to; **Phumzile Lembede**.

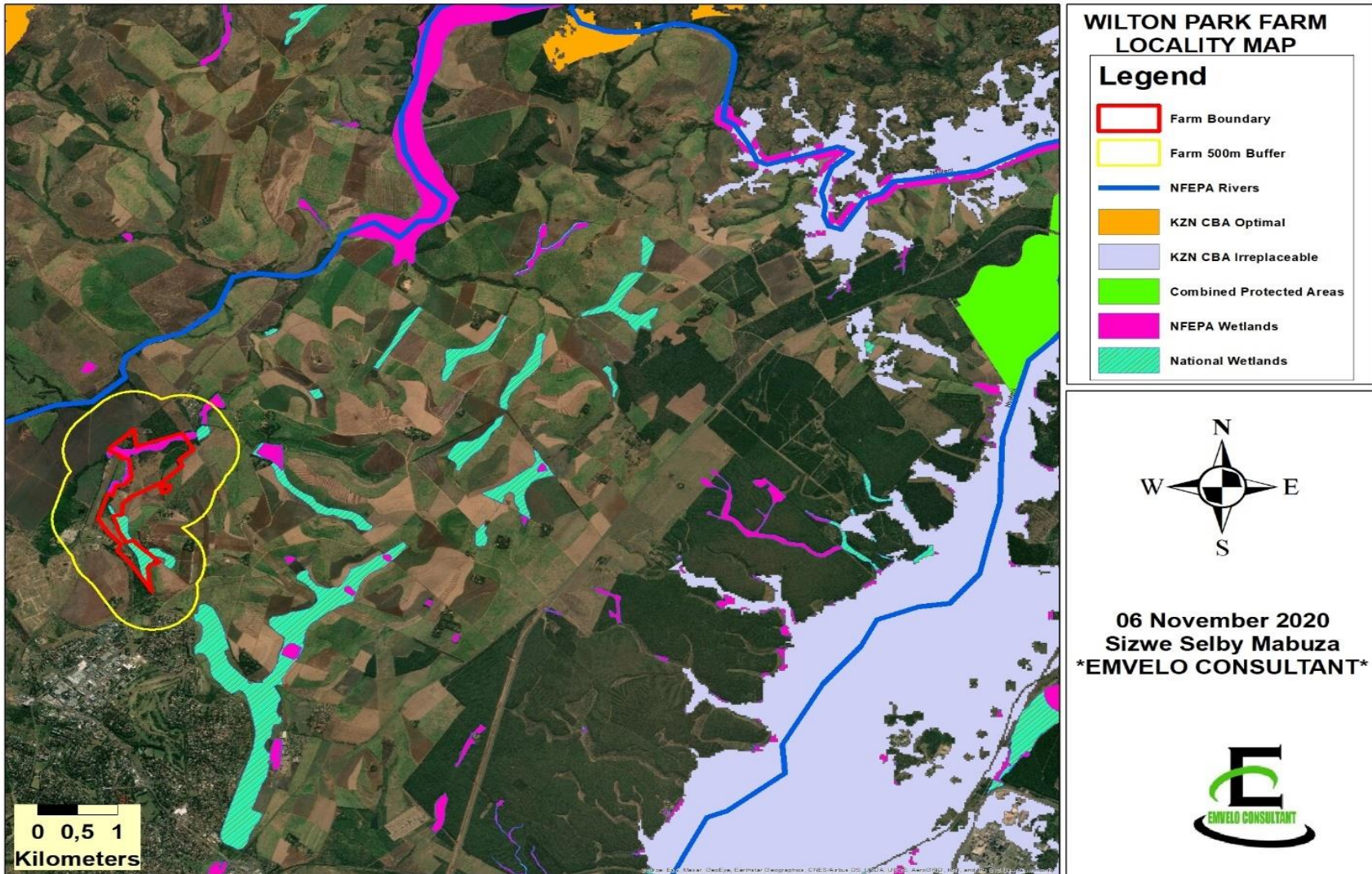
Postal address: P. O. Box 101672, Meerensee,3901;

Tel: 035 789 0632;

Fax: 086 577 5220,

Email: info@emveloconsultants.co.za.

APPENDIX A
(LOCALITY MAP)





Emvelo Quality and Environmental Consultant (PTY) Ltd

Promenade Building, 1st Floor, Unit D2, 24 Lira Link CBD,
Richards Bay, 3900.

REGISTRATION AND COMMENT FORM

**THE PROPOSED CULTIVATION OF LAND FOR THE PLANTATION OF SUGARCANE ON
THE WILTON PARK FARM, WITHIN THE JURISDICTION OF THE CITY OF UMHLATHUZE
MUNICIPALITY, KING CETSHWAYO DISTRICT, KWAZULU-NATAL.**

I wish to register as an interested and affected party and / or bring to the attention of Emvelo Consultant the following information.

<u>Personal Information</u>	
Name and Surname	
Company /organization	
Physical Address	
<u>Postal address</u>	
<u>Telephone:</u>	<u>Cell:</u>
Email:	
Due to Covid-19 Pandemic, we would like you to inform us on a preferred and effective means of receiving documents and communication from us. <u>Method:</u> <u>Address:</u>	
<u>Comments</u>	

Signature

Date