



# BACKGROUND INFORMATION DOCUMENT



## THE INSTALLATION OF A BULK SEWER LINE FROM PINE RIDGE PUMP STATION TO THE KLIPSPRUIT SEWAGE TREATMENT WORKS, eMALAHLANI

Reference number assigned by the Clean Stream Environmental Services: EIA 2016/01

### Purpose of this document

- Overview of the proposed project;
- Overview of the Environmental Impact Assessment Process (EIA) to ensure that Interested and Affected Parties (I&APs) understand the process;
- Invitation to I&APs to participate in the EIA process by:
  - ⇒ Indicating their viewpoints, issues and concerns regarding the activity;
  - ⇒ Suggesting alternatives or ways of mitigating negative impacts and enhancing positive.

### Contents of this document:

|                                     |   |
|-------------------------------------|---|
| Introduction and Legal Requirements | 1 |
| Environmental Consultant            | 2 |
| Public Participation                | 3 |
| Project Description                 | 4 |
| Figure 1: Location of site          | 4 |
| Figure 2: Proposed layout plan      | 5 |
| Process to be followed              | 6 |
| Comment sheet                       | 7 |

## Introduction and Legal Requirements

eMalahleni Local Municipality intends to install a new bulk sewer line from the Pine Ridge Pump Station to the Klipspruit Sewage Treatment Works (Figure 1). The pipeline will be ±14.5km in length and between 825mm and 1350mm in diameter.

The proposed sewer line will be located on various portions of the farms Leeuwoort 283 JS, Klippoort 277 JS, Harbeestspruit 281 JS and Nooitgedacht 300 JS. The site is located northeast of eMalahleni and Pine Ridge and extends through the Leeuwoort Smallholdings to the Klipspruit Sewage Treatment Works (Figure 1).

The Minister of Environmental and Water Affairs listed in terms of Sections 24(2) and 24D of the National Environmental Management Act, 1998 (Act No. 107 of 1998), a number of activities that require an environmental impact assessment (either a Basic Assessment or a full Environmental Impact Assessment) before undertaking these activities.

The proposed activity could involve the following listed activities as identified in terms of Section 24(2) and 24D (read with section 47A(1)(b)) of the National Environmental Management Act, 1998 :

- **GN R983 – Listing Notice 1, Listed Activity 10:** *The development of infrastructure exceeding 1000 metres in length for the bulk transportation of sewage, effluent, process water, waste water, return water, industrial discharge or slimes - (i) with an internal diameter of 0.36 metres or more; or (ii) with a peak throughput of 120 litres per second or more; excluding where (a) such*

*infrastructure is for bulk transportation of sewage, effluent, process water, waste water, return water, industrial discharge or slimes inside a road reserve; or (b) where such development will occur within an urban area.*

- **GN R983 – Listing Notice 1, Listed Activity 12:** *The development of (i) canals exceeding 100 square metres in size; (ii) channels exceeding 100 square metres in size; (iii) bridges exceeding 100 square metres in size; (iv) dams, where the dam, including infrastructure and water surface area, exceeds 100 square metres in size; (v) weirs, where the weir, including infrastructure and water surface area, exceeds 100 square metres in size; (vi) bulk storm water outlet structures exceeding 100 square metres in size; (vii) marinas exceeding 100 square metres in size; (viii) jetties exceeding 100 square metres in size; (ix) slipways exceeding 100 square metres in size; (x) buildings exceeding 100 square metres in size; (xi) boardwalks exceeding 100 square metres in size; or (xii) infrastructure or structures with a physical footprint of 100 square metres or more; where such development occurs (a) within a watercourse; (b) in front of a development setback; or (c) if no development setback exists, within 32 metres of a watercourse, measured from the edge of a water course;- excluding (aa) the development of infrastructure or structures within existing ports or harbours that will not increase the development footprint of the port or harbour; (bb) where such development activities are related to the development of a port or harbour, in which case activity 26 in Listing Notice 2 of 2014 applies; (cc) activities listed in activity 14 in Listing Notice 2 of 2014 or activity 14 in Listing Notice 3 of 2014, in which case that activity applies; (dd) where such development occurs within an urban area; or (ee) where such development occurs within existing roads and road reserves.*
- **GN R983 – Listing Notice 1, Listed Activity 19:** *The infilling or depositing of any material of more than 5 cubic metres into, or the dredging, excavation, removal or moving of soil, sand, shells, shell grit, pebbles or rock of more than 5 cubic metres from (i) a watercourse; (ii) the seashore; or (iii) the littoral active zone, an estuary or a distance of 100 metres inland of the high-water mark of the sea or an estuary, whichever distance*

is the greater but excluding where such infilling, depositing, dredging, excavation, removal or moving – (a) will occur behind a development setback; (b) is for maintenance purposes undertaken in accordance with a maintenance management plan; or (c) falls within ambit of activity 21 in this Notice, in which case that activity applies.

- **GN R983 – Listing Notice 1, Listed Activity 27:**  
*The clearance of an area of 1 hectare or more, but less than 20 hectares of indigenous vegetation, except where such clearance of indigenous vegetation is required for (i) the undertaking of a linear activity; or (ii) maintenance purposes undertaken in accordance with a maintenance management plan.*
- **GN R983 – Listing Notice 1, Listed Activity 46:**  
*The expansion and related operation of infrastructure for the bulk transportation of sewage, effluent, process water, waste water, return water, industrial discharge or slimes where the existing infrastructure (i) has an internal diameter of 0.36 metres or more; or (ii) has a peak throughput of 120 litres per second or more; and (a) where the facility or infrastructure is expanded by more than 1000 metres in length; or (b) where the throughput capacity of the facility or infrastructure will be increased by 10% or more; excluding where such expansion (aa) relates to transportation of sewage, effluent, process water, waste water, return water, industrial discharge or slimes within a road reserve; or (bb) will occur within an urban area.*
- **GN R984 – Listing Notice 2, Listed Activity 6:**  
*The development of facilities or infrastructure for any process or activity which requires a permit or licence in terms of national or provincial legislation governing the generation or release of emissions, pollution or effluent, excluding – (i) activities which are identified and included in Listing Notice 1 of 2014; (ii) activities which are included in the list of waste management activities published in terms of section 19 of the National Environmental Management: Waste Act, 2008 applies; or (iii) the development of facilities or infrastructure for the treatment of effluent, wastewater or sewage where such facilities have a daily throughput capacity of 2000 cubic metres or less.*
- **GN R984 – Listing Notice 2, Listed Activity 15:**  
*The clearance of an area of 20 hectares or more of indigenous vegetation, excluding where such clearance of indigenous vegetation is required for – (i) the undertaking of a linear activity; or (ii) maintenance purposes undertaken in accordance with a maintenance management plan.*

- **GN R984 – Listing Notice 2, Listed Activity 25:** *The development and related operation of facilities or infrastructure for the treatment of effluent, wastewater or sewage with a daily throughput capacity of 15 000 cubic metres or more.*

In order to obtain approval (authorization) for this project, a **Scoping and Environmental Impact Assessment** must be conducted since the proposed project triggers listed activities as identified in GN R983 and R984 — Listing Notices 1 and 2 (see above).

In addition, a specific procedure must be followed as stipulated in the Environmental Impact Assessment Regulations, 2014, which also requires specific documentation to be submitted.

Once all the required documentation has been submitted and the environmental process completed, the responsible authority must make a decision on the application.

The environmental decision making authority for this application is the Mpumalanga Department of Agriculture, Rural Development, Land and Environmental Affairs (DARDLEA).

**Part of the above-mentioned process is to inform interested and affected parties (I&APs) of the proposed project and to obtain any issues of concern.**

**You are hereby invited to register as an I&AP and provide input with regards to the proposed activity.**

## Environmental Consultant

Clean Stream Environmental Services was appointed as independent environmental consultant to conduct the required environmental impact assessment and compile the necessary documentation.

### Clean Stream Environmental Services

P.O. Box 647

Witbank

1035

Tel/fax: (013) 697-5021

E-mail: [riana@cleanstreams.co.za](mailto:riana@cleanstreams.co.za)

Contact person: R. van Rensburg

WE'RE ON THE WEB!

[www.cleanstreams.co.za](http://www.cleanstreams.co.za)



## Public Participation

### Aim of Public Participation

- To inform Interested and Affected Parties (I&APs) and Stakeholders of the proposed project.
- To allow for the registration of I&APs and thereby present I&APs with the opportunity to comment on the project, contribute ideas, raise concerns and review reports.

*In order to ensure that you are identified as an interested and/or affected party; please submit your name, contact information and interest in the matter to the contact person within 30 days of receipt of this document (i.e. no later than **5 March 2016**).*

*If you know of any other interested and affected party who should be registered as an I&AP, it would be appreciated if you could forward the relevant contact details to Clean Stream Environmental Services.*

### Public meeting

At this stage, it is not anticipated that a public meeting will be held. Should this change, the public meeting will be announced and all I&APs will be invited to attend the meeting.

### Who are interested and affected parties?

An interested and affected party (I&AP) can be defined as any person, group of persons or organisation interested in or affected by a proposed activity or any organ of state that may have jurisdiction over any aspect of the activity.

The public participation process allows I&APs the opportunity to:

- Obtain clear and accurate information about the proposed activity;
- Indicate their viewpoints, issues and concerns regarding the activity;
- Suggest alternatives or ways of mitigating negative impacts and enhancing positive impacts.

### What are the responsibilities of an interested and affected party?

In order to participate effectively, I&APs should:

- Become involved in the process as early as possible;
- Register as I&APs;
- Advise the consultant of other I&APs who should be consulted;
- Contribute towards the design of the public participation process to ensure that it is acceptable to all I&APs;
- Follow the process once it has been accepted;
- Read the material provided and actively seek to understand the issues involved;
- Give timely responses to correspondence;
- Be respectful and courteous towards other I&APs and the environmental consultant;
- Refrain from making subjective, unfounded or ill-informed statements;
- Recognize that the process is confined to issues that are directly relevant to the application.

### Availability of Reports

The following reports will be made available to interested and affected parties for evaluation purposes-

- Background Information Document (BID);
- Scoping Report;
- Environmental Impact Report;
- Environmental Authorisation and Reasons for Decision.

A copy of the above-mentioned documents will also be provided on our website: [www.cleanstreams.co.za](http://www.cleanstreams.co.za)

### How to comment

Comments, questions, issues of concern or objections can be made in writing (by fax, e-mail or post). For your convenience, a comment sheet is attached to this document. Should you not be able to provide us with written comment, please give us a call.

If you do not wish to submit comments, please still provide us with your contact details and indicate whether you would like to remain on the mailing list.

## Project Description

eMalahleni Local Municipality intends to install a new bulk sewer line from the Pine Ridge Pump Station to the Klipspruit Sewage Treatment Works (Figure 1). The pipeline will be  $\pm 14.5$  km in length and between 825mm and 1350 mm in diameter. The outfall sewer will connect to the existing Klarinet outfall sewer at Pine Ridge and gravitate to the Klipspruit Sewage Treatment Works.

The proposed sewer line will be located on various portions of the farms Leeuwpoot 283 JS, Klippoot 277 JS, Harbeestspruit 281 JS and Nooitgedacht 300 JS. The site is located northeast of eMalahleni and Pine Ridge and extends through the Leeuwpoot Smallholdings to the Klipspruit Sewage Treatment Works (Figure 1).

Co-ordinates for the start, centre and end of the sewer line are:

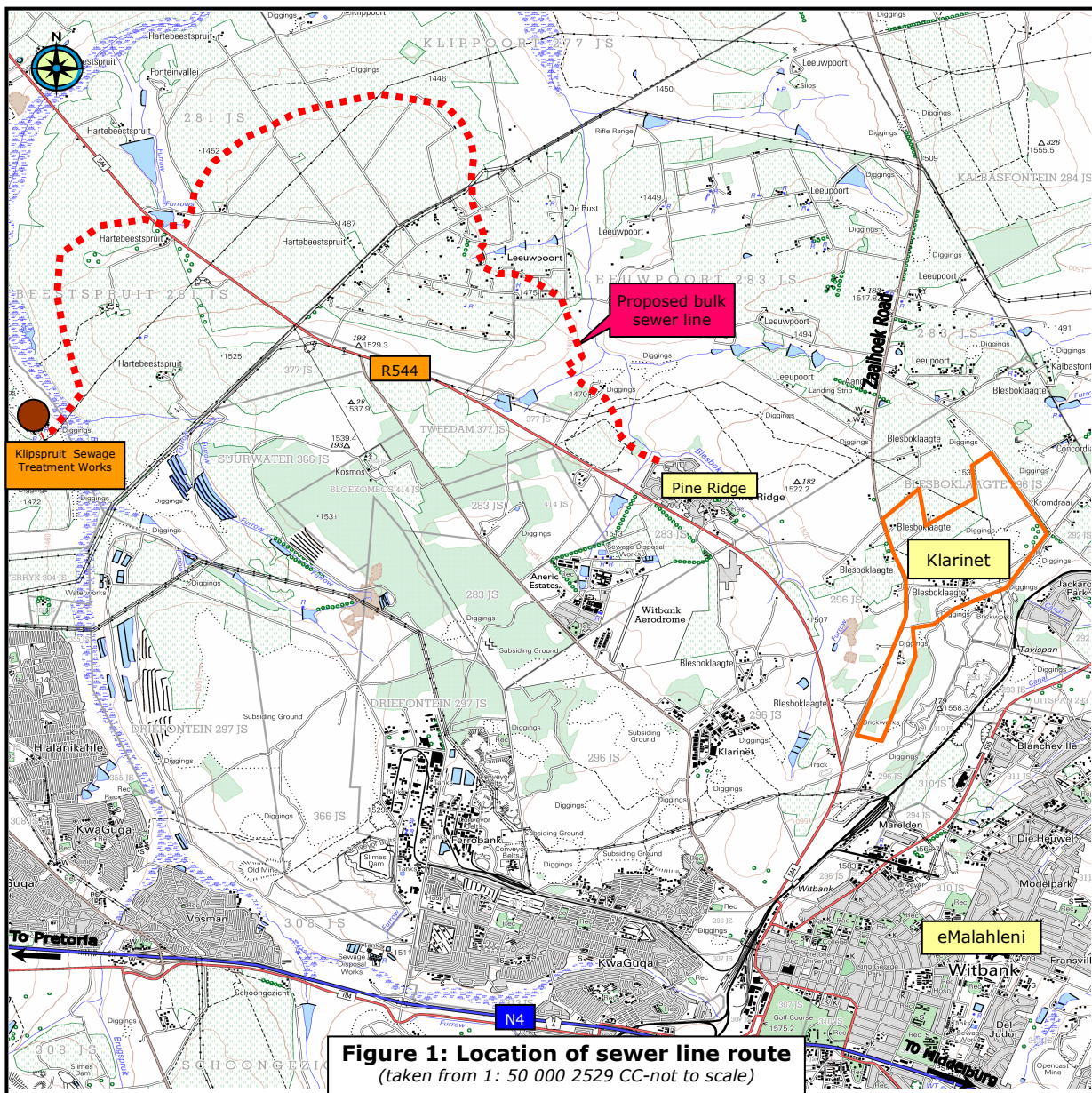
- 25°48'46.41"S and 29°11'44.26"E.
- 25°46'00.29"S and 29°09'44.83"E.
- 25°48'36.09"S and 29°07'13.95"E.

Figure 2 provides an aerial view of the proposed bulk sewer pipeline route.

Alternatives will be investigated as part of the project, which may include the construction of a new sewage treatment works.

As part of the project, the Pine Ridge Pumpstation will be decommissioned and all existing and future flows will be diverted to the new sewer line. The design flow will range from 400 lt/s (at starting point) to 1000 lt/s (at the discharge point).

The sewer line needs to be installed as part of the overall Klarinet Integrated Housing Project. The Klarinet Integrated Housing Project will when completed provide housing with the associated amenities to about 12 000 families. The project has been declared a National Priority Project and is implemented in support of the Government's Breaking New Ground Strategy.



## Proposed layout plan

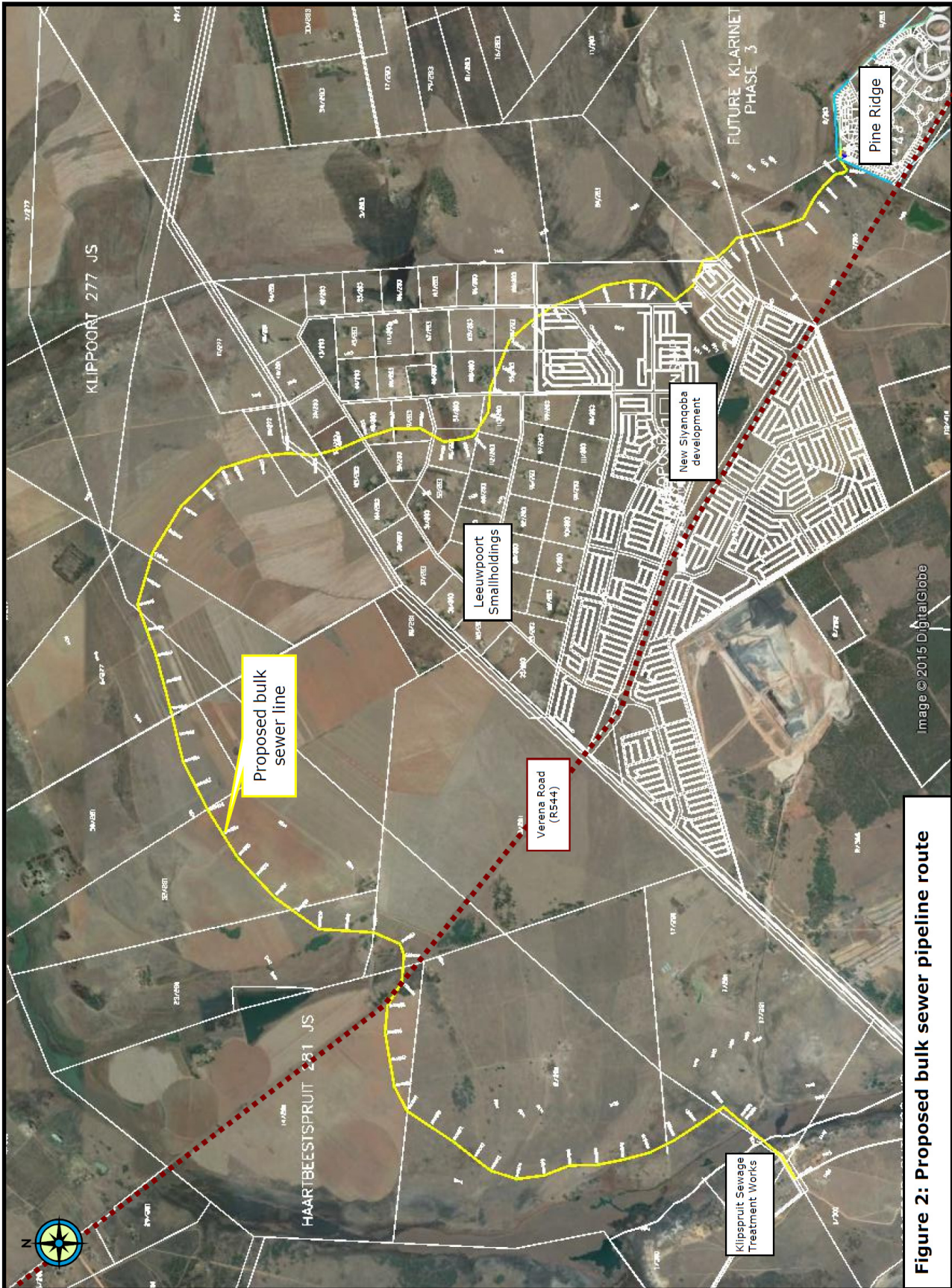


Figure 2: Proposed bulk sewer pipeline route

## Process to be followed

Advertise project in local newspaper (30 days for registration as I&AP)  
5 February – 5 March 2016

WE ARE HERE

Consultant to conduct scoping exercise (60 days) and compile Scoping Report  
February – March 2016

Submission of application form with DARDLEA  
March 2016

DARDLEA to acknowledge receipt and issue

Submit Scoping Report to DARDLEA and I&APs for evaluation (30 days)  
4 April – 4 May 2016

Approval of Scoping Report by DARDLEA

Consultant to conduct EIR process (specialist studies, public participation, etc.)  
(106 days) 9 May – 26 August 2016

Submit EIR to DARDLEA and I&APs for evaluation (30 days)  
26 August – 26 September 2016

Consultant to revise EIR (10 days)  
September 2016

Submit revised EIR to DARDLEA and I&APs for evaluation (21 days)  
September – October 2016

Decision on EIR by DARDLEA  
(107 days)

Appeal process

Public Participation

In order to determine whether approval can be obtained for a proposed activity, a specific procedure must be followed. Government Notice R982 regulates the procedure for the submission, processing and consideration of applications. In short, the Environmental Assessment Practitioner (EAP) must apply the following:

- complete an application form (Regulation 16);
- compile a Scoping Report, Environmental Impact Report and Environmental Management Programme (Regulations 21–23 and Appendices 2, 3 and 4 to the Regulations);
- follow a public participation process (Regulations 39–44).

The process that will be followed by the EAP as well as the anticipated timeframes are attached for perusal. The aim of the process is to ensure that the environmental impacts are considered, the relevant I&APs are consulted and the decision making authorities are provided with sufficient information to make an informed decision.

Information with regards to the following environmental features of the said site will be provided in both the Scoping Report and the Environmental Impact Report:

- Topography
- Geology
- Soil
- Land use
- Natural vegetation/plant life
- Animal life
- Surface water
- Groundwater
- Air quality
- Noise
- Sites of archaeological or cultural interest
- Sensitive landscapes
- Visual aspects
- Traffic
- Sense of place
- Interested and affected parties

The Environmental Impact Report will thus provide information regarding the planned activity, the environmental features of the said site and the public participation process followed. It will also provide an indication of the potential impacts that could result during the construction and operational phases of this project as well as possible mitigation/management measures to be implemented.

PLEASE NOTE: TIME TABLE SUBJECT TO CHANGE THROUGH PROCESS FOLLOWED

*It would be appreciated if you could complete the attached comment sheet indicating your issues of concern and/or objections and could forward this comment sheet to Clean Stream Environmental Services by **5 March 2016**.*

