

INVITATION TO PARTICIPATE:

Proposed Onderstepoort x42 BACKGROUND INFORMATION DOCUMENT

Introduction

The purpose of this BID is to provide information to I&APs about the Proposed Proposed Onderstepoort x42 Portion 297, Portion 299 and Portion 303 mixed use township establishment.

The Environmental Impact Assessment Procedure is in process under the December, NEMA 2014 legislation and a Notice of Intent was lodged with the Gauteng Department of Agriculture and Rural Development (GDARD). Discussions are being held with GDARD to determine the best approach to the application prior to lodging the application.

This BID explains the proposed project and the regulatory processes that will have to be complied with, while providing I&APs with the opportunity to:

- Register as stakeholders in the public participation process; and
- Make initial comments on and contributions to the proposed project.

Contact person for representation on the application:

LEAP Contact Person: Dr. Gwen Theron

Tel: 012 344 3852

Fax: 086 606 6130

P.O. Box 13185 Hatfield, 0028

E-mail: gwen.theron@telkomsa.net

Public Participation Assistant: Jitske Botes

Tel: (012) 344 3582

E-mail: jitske@telkomsa.net

Affected properties

Location: Portion 297, Portion 299 and Portion 303 of the Farm Haakdoornboom 276 JR

Extent: Approximately 128 Hectares

Your comment is important

Your comments will ensure that all relevant issues are evaluated in Environmental Impact Assessment (EIA). You are requested to complete the enclosed registration sheet, write a letter, call or e-mail the public participation office in Pretoria (Jitske Botes). Upon request you will then receive further information about the proposed project and the EIA process.

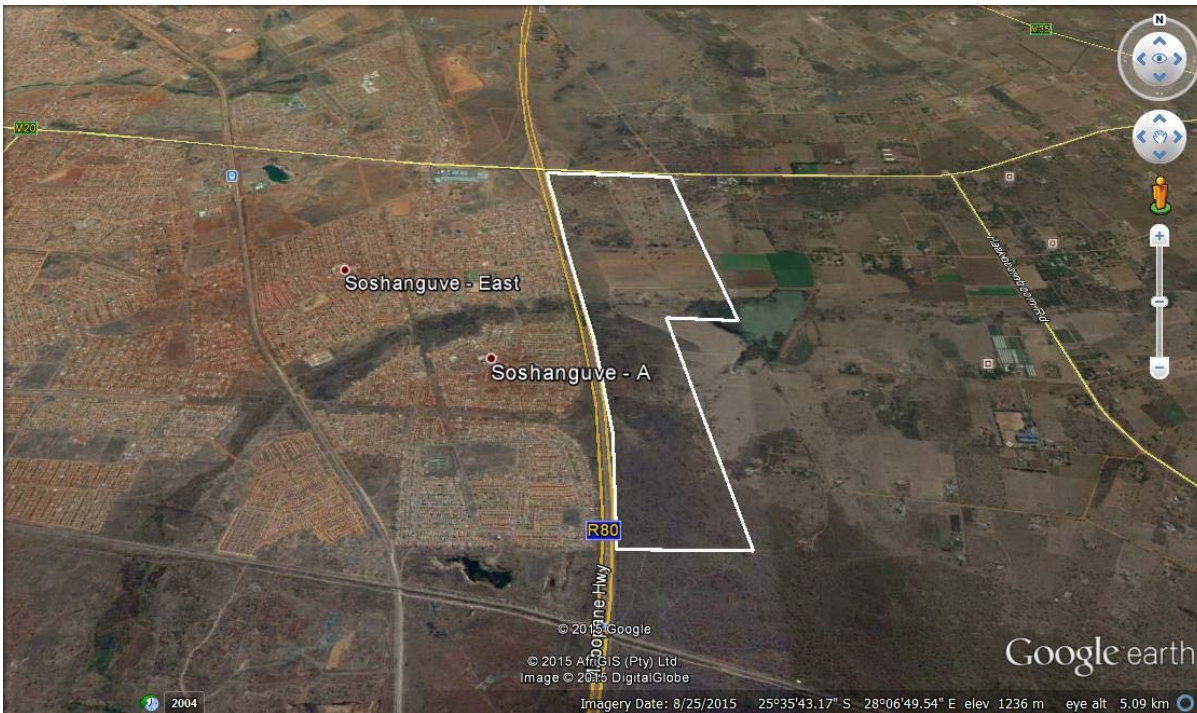


Figure 1: Location map

What is an EIA?

Power Development Projects (Pty) Ltd (The Applicant) to commence with the proposed development, the applicant must conduct an EIA (scoping) process and submit an EIA Report (EIAR) to the regulatory authorities (GDARD) in support of an application for environmental authorisation to proceed with the project. An EIA process is a well-defined and regulated process, in terms of the NEMA, involving public participation and technical studies, to identify issues of concern and to evaluate the environmental and socio-economic impacts of a proposed project.

EIAs are used by planning authorities to obtain an objective view of the potential environmental and social impacts that could arise during the construction and operation of the proposed development. This information must provide a sound basis for decision-making by the authorities. The end product of EIA process is an EIA Report, which must:

- Identify the potential impacts of the proposed activities;
- Outline the public participation process undertaken; Illustrate the issues, concerns and suggestions raised by I&APs; and
- Outline the environmental management and mitigation measures that must be taken to avoid or reduce negative impacts and enhance positive impacts.

The activities to be applied for:

Indicate the number and date of the relevant Government Notice:	Activity No (s) (in terms of the relevant notice) :	Describe each listed activity:
---	---	--------------------------------

GN R 983, 8 December 2014	9	<p>The development of infrastructure exceeding 1000 metres in length for the bulk transportation of water or storm water-</p> <p style="margin-left: 40px;">(i). with an internal diameter of 0,36 metres or more; or</p> <p style="margin-left: 40px;">(ii). with a peak throughput of 120 litres per second or more;</p> <p>excluding where-</p> <p style="margin-left: 40px;">(a). such infrastructure is for bulk transportation of water or storm water or storm water drainage inside a road reserve; or</p> <p style="margin-left: 40px;">(b). where such development will occur within an urban area.</p>
GN R 983, 8 December 2014	10	The development and related operation of infrastructure exceeding 1000 metres in length for the bulk transportation of sewage, effluent, process water, waste water, return water, industrial discharge or

		<p>slimes</p> <ul style="list-style-type: none"> (i). with an internal diameter of 0,36 metres or more; or (ii). with a peak throughput of 120 litres per second or more; <p>excluding where-</p> <ul style="list-style-type: none"> (a). such infrastructure is for bulk transportation of sewage, effluent, process water, waste water, return water, industrial discharge or slimes inside a road reserve; or (b). where such development will occur within an urban area.
GN R 983, 8 December 2014	12	<p>The development of-</p> <ul style="list-style-type: none"> (i). canals exceeding 100 square metres in size; (ii). channels exceeding 100 square metres in size; (iii). bridges exceeding 100 square metres in size; (iv). dams, where the dam, including infrastructure and water surface area, exceeds 100 square metres in size; (v). weirs, where the weir, including infrastructure and water surface area, exceeds 100 square metres in size; (vi). bulk storm water outlet structures exceeding 100 square metres in size; (vii). marinas exceeding 100 square metres in size; (viii). jetties exceeding 100 square metres in size; (ix). slipways exceeding 100 square metres in size; (x). buildings exceeding 100 square metres in size; (xi). boardwalks exceeding 100 square metres in size; or (xii). infrastructure or structures with a physical footprint of 100 square metres or more; <p>(a). where such development occurs-</p> <ul style="list-style-type: none"> (b). within a watercourse; (c). in front of a development setback; or (d). if no development setback exists, within 32 metres of a watercourse, measured from the edge of a watercourse; - <p>excluding-</p> <ul style="list-style-type: none"> (aa) the development of infrastructure or structures within existing ports or harbours that will not increase the development footprint of the port or harbour; (bb) where such development activities are related to the development of a port or harbour, in which case activity 26 in Listing Notice 2 of 2014 applies; (cc) activities listed in activity 14 in Listing Notice 2 of 2014 or activity 14 in Listing Notice 3 of 2014, in which case that activity applies; (dd) where such development occurs within an urban area; or (ee) where such development occurs within existing roads or road reserves.
GN R 983, 8 December 2014	19	<p>The infilling or depositing of any material of more than 5 cubic metres into, or the dredging, excavation, removal or moving of soil, sand, shells, shell grit, pebbles or rock of more than 5 cubic metres from-</p> <ul style="list-style-type: none"> (i). a watercourse; (ii). the seashore; or (iii). the littoral active zone, an estuary or a distance of 100 metres inland of the high-water mark of the sea or an estuary, whichever distance is the greater <p>but excluding where such infilling, depositing, dredging, excavation, removal or moving-</p> <ul style="list-style-type: none"> (a). will occur behind a development setback; (b). is for maintenance purposes undertaken in accordance with a maintenance management plan; or <p>falls within the ambit of activity 21 in this Notice, in which case that activity applies.</p>
GN R 983, 8 December 2014	24	<p>The development of-</p> <ul style="list-style-type: none"> (i). a road for which an environmental authorisation was obtained for the route determination in terms of activity 5 in Government Notice 387 of 2006 or activity 18 in Government Notice 545 of 2010; or (ii). (a road with a reserve wider than 13,5 meters, or where no reserve exists where the road is wider than 8 metres; <p>but excluding-</p> <ul style="list-style-type: none"> (a). roads which are identified and included in activity 27 in Listing Notice 2 of 2014; or roads where the entire road falls within an urban area.
GN R 983, 8	45	<p>The expansion of infrastructure for the bulk transportation of water or storm water where the existing infrastructure-</p>

December 2014		<ul style="list-style-type: none"> (i). has an internal diameter of 0,36 metres or more; or (ii). has a peak throughput of 120 litres per second or more; and (a). where the facility or infrastructure is expanded by more than 1000 metres in length; or (b). where the throughput capacity of the facility or infrastructure will be increased by 10% or more; <p>excluding where such expansion-</p> <ul style="list-style-type: none"> (aa) relates to transportation of water or storm water within a road reserve; or (bb) will occur within an urban area.
GN R 983, 8 December 2014	46	<p>The expansion and related operation of infrastructure for the bulk transportation of sewage, effluent, process water, waste water, return water, industrial discharge or slimes where the existing infrastructure-</p> <ul style="list-style-type: none"> (i). has an internal diameter of 0,36 metres or more; or (ii). has a peak throughput of 120 litres per second or more; and (a). where the facility or infrastructure is expanded by more than 1000 metres in length; or (b). where the throughput capacity of the facility or infrastructure will be increased by 10% or more; <p>excluding where such expansion-</p> <ul style="list-style-type: none"> (aa) relates to transportation of sewage, effluent, process water, waste water, return water, industrial discharge or slimes within a road reserve; or (bb) will occur within an urban area.
GN R 984, 8 December 2014	15	<p>The clearance of an area of 20 hectares or more of indigenous vegetation, excluding where such clearance of indigenous vegetation is required for-</p> <ul style="list-style-type: none"> (i). the undertaking of a linear activity; or <p>maintenance purposes undertaken in accordance with a maintenance management plan.</p>
GN R 985, 8 December 2014	4	<p>The development of a road wider than 4 metres with a reserve less than 13,5 metres.</p> <p>(c) In Gauteng:</p> <ul style="list-style-type: none"> (i). A protected area identified in terms of NEMPAA, excluding conservancies; (ii). National Protected Area Expansion Strategy Focus Areas; (iii). Gauteng Protected Area Expansion Priority Areas; (iv). Sites identified as Critical Biodiversity Areas (CBAs) and Ecological Support Areas (ESAs) in the Gauteng Conservation Plan or in bioregional plans; (v). Sites identified within threatened ecosystems listed in terms of the National Environmental Management Act: Biodiversity Act (Act No. 10 of 2004); (vi). Sensitive areas identified in an environmental management framework adopted by relevant environmental authority; (vii). Sites identified as high potential agricultural land in terms of Gauteng Agricultural Potential Atlas; (viii). Important Bird and Biodiversity Area (IBA); (ix). Sites or areas identified in terms of an International Convention; (x). Sites managed as protected areas by provincial authorities, or declared as nature reserves in terms of the Nature Conservation Ordinance (Ordinance 12 of 1983) or the National Environmental Management: Protected Areas Act (Act No. 57 of 2003); (xi). Sites designated as nature reserves within municipal SDFs; or <p>Sites zoned for a conservation or public open space or equivalent zoning.</p>
GN R 985, 8 December 2014	12	<p>The clearance of an area of 300square metres or more of indigenous vegetation except where such clearance of indigenous vegetation is required for maintenance purposes undertaken in accordance with a maintenance management plan</p> <p>(a) In Eastern Cape, Free State, Gauteng, Limpopo, North West and Western Cape provinces:</p> <ul style="list-style-type: none"> i. Within any critically endangered or endangered ecosystem listed in terms of section 52 of the NEMBA or prior to the publication of such a list, within an area that has been identified as critically endangered in the National Spatial Biodiversity Assessment 2004; ii. Within critical biodiversity areas identified in bioregional plans; iii. Within the littoral active zone or 100 metres inland from high water mark of the sea or an estuarine functional zone, whichever distance is the greater, excluding where such removal will occur behind the development setback line on erven in urban areas; or iv. On land, where, at the time of the coming into effect of this Notice or thereafter such land was zoned open space, conservation or had an equivalent zoning.
GN R 985, 8 December 2014	14	<p>The development of –</p> <ul style="list-style-type: none"> (i) Canals exceeding 10 square metres in size;

		<p>(ii) Channels exceeding 10 square metre in size;</p> <p>(iii) Bridges exceeding 10 square metres in size</p> <p>(iv) Dams, where the dam, including infrastructure and water surface area exceeds 10 square metres in size</p> <p>(v) Weirs, where the weir, including infrastructure and water surface area exceeds 10 square metres in size;</p> <p>(vi) Bulk storm water outlet structures exceeding 10 square metres in size</p> <p>(vii) Marinas exceeding 10 square metres in size</p> <p>(viii) Jetties exceeding 10 square metres in size;</p> <p>(ix) Slipways exceeding 10 square metres in size</p> <p>(x) Buildings exceeding 10 square metres in size</p> <p>(xi) Boardwalks exceeding 10 square metres in size; or</p> <p>(xii) Infrastructure or structures with a physical footprint of 10 square metres or more</p> <p>Where such development occurs –</p> <p>(a) Within a watercourse;</p> <p>(b) In front of a development setback; or</p> <p>(c) If no development setback has been adopted, within 32 metres of a watercourse, measured from the edge of a watercourse;</p> <p>Excluding the development of infrastructure or structures within existing ports or harbours that will not increase the development footprint of the port or harbour</p> <p>In Gauteng:</p> <p>i. A protected area identified in terms of NEMPAA, excluding conservancies;</p> <p>ii. National Protected Area Expansion Strategy Focus Areas;</p> <p>iii. Gauteng Protected Area Expansion Priority areas;</p> <p>iv. Sites identified as Critical Biodiversity Areas (CBAs) and Ecological Support Areas (ESAs) in the Gauteng Conservation Plan or in bioregional plans;</p> <p>v. Sites identified within threatened ecosystems listed in terms of the National Environmental Management Act: Biodiversity Act (Act No. 10 of 2004);</p> <p>vi. Sensitive area identified in an environmental management framework adopted by relevant environmental authority;</p> <p>vii. Sites or areas identified in terms of an International Convention</p> <p>viii. Sites managed as protected areas by provincial authorities, or declared as nature reserves in terms of the Nature Conservation Ordinance (Ordinance 12 of 1983) or the National Environmental Management: Protected Areas Act (Act No. 57 of 2003);</p> <p>ix. Sites designated as nature reserves within municipal SDFs; or</p> <p>x. Sites zoned for conservation or public open space or equivalent zoning.</p>
--	--	---

Public Participation

The public participation process during the EIA phase will enable I&APs to influence the course of the technical investigations and to review the findings of the independent studies that are undertaken. The environmental consultants will correspond directly with registered I&APs at various stages during the process to keep them informed of progress in the study and the timing of opportunities to be involved. The steps in the public participation process are outlined below.

- Letters of invitation accompanied by this BID and comment sheet to be distributed to adjacent landowners within 100m from the area of the proposed development, key individuals and organisations, announcing the project and inviting their comment
- Advertisements in Local newspaper (Citizen) announcing the proposed project and providing opportunity to comment
- Site notices to be erected at strategic places along the property in accordance with the requirements of the EIA Regulations, in order to announce the project
- Key stakeholders in the area will be informed by telephone, e-mail or facsimile.
- All issues received from stakeholders will be captured in the issues and response report (I&RR) which will be used to screen and prioritise issues for evaluation

Specialist studies being conducted

The following specialist studies are currently being conducted to provide the necessary detail to GDARD to make informed decisions regarding the application. Furthermore, the specialist studies provide the I&AP's the information required to gauge the potential impact and to see if the issues that are important to them are addressed.

- Traffic Impact Assessment
- Services report to include Roads, Water provision, Sewer reticulation and Storm Water
- Electricity
- Architectural Studies
- Town planning Motivational Memorandum
- Ecological Assessment
- Heritage Impact Assessment

Due date for registration is 07 December 2015

▪ List of Acronyms

- BA Basic Assessment
- BAR Basic Assessment Report
- BID Background Information Document
- EIA An Environmental Impact Assessment as contemplated in terms of the National Environmental Management Act (Act 1207 of 1998)
- EIAR Environmental Impact Assessment Report
- GN Government Notice
- GDARD Gauteng Department of Agriculture and Rural Development
- I&AP's Interested and Affected Parties
- I&RR issues and response report
- NEMA National Environmental Management Act (Act 107 of 1998)
- NWA National Water Act
- Reg Regulation

INVITATION TO PARTICIPATE: EIA as per NEMA ONDERSTEPOORT X42 REGISTRATION SHEET Accompanying Background Information Document November 2015	Public Participation Office LEAP Gwen Theron P.O.Box 13185, Hatfield, 0028 FAX 086 606 6130 gwen.theron@telkomsa.net & Jitske Botes Jitske@telkomsa.net
--	--

Please complete and return to the contact details as provided, by 07 December 2015 to register

TITLE		FIRST NAME	
INITIALS		SURNAME	
ORGANISATION			
POSTAL ADDRESS		POSTAL CODE	
LAND LINE TEL NO		CELL NO	
FAX NO		EMAIL	

Please formally register me as an interested and affected party (I&AP) so that I may receive further information and notifications during the EIA (Scoping) process		YES	NO
I would like my notifications and documents for comment as follows:			
Letter (mail)	E-mail	Fax	On CD
		Internet	
In terms of this Public Participation process I disclose below any direct business, financial, personal or other interest that I may have in the approval or refusal of the application:			

COMMENTS (please use separate sheets if you wish)

I suggest that the following issues of concern be investigated:

.....

I suggest the following for the public participation process:

.....

Any other comments:

.....

.....

Please also register the following people as I&APs for this process:

.....

.....

Signature

Date

THANK YOU FOR YOUR CONTRIBUTION