



# NS Environmental

## Environmental Consultancy

Cell: 083 648 2967; Tel: 031 269 1601; Fax: 086 537 9397

[nishal@nsenvironmental.co.za](mailto:nishal@nsenvironmental.co.za); <http://www.nsenvironmental.co.za>

Block 1a, Kingfisher Office Park, 28 – 32 Siphosethu Road, Mount Edgecombe, 4032

PO Box 65065, Reservoir Hills, Durban, 4090

## Background Information Document for the proposed construction of a filling station and a retail centre on Holding 63, Johandeo

GDARD Ref. No.: 002/16-17/E0140

Date: 16 November 2016

### THE PROPOSED PROJECT

NS Environmental (Pty) Ltd were appointed by Tshani Consulting, on behalf of Stone Cold Enterprise 10 (Pty) Ltd. to conduct an Environmental Basic Assessment for the proposed construction of a filling station and a retail centre on holding 63, Johandeo located within the Sedibeng District Municipality.

The project entails the proposed construction of a filling station and associated facilities (retail facilities, food outlets, hardware store and internal roads) at the corner of Makholong Street and the Golden Highway (R28) in the established township of Johandeo, located south west of Sebokeng in Gauteng. The proposed construction will cover approximately 3 hectares of land.

### PURPOSE OF THIS DOCUMENT

This Background Information Document (BID) provides Interested and Affected Parties (I&APs) with basic project information, as well as information regarding the Basic Assessment process being undertaken. It further indicates the important role of public participation

during the assessment phase, as input from I&APs contributes to ensuring that all potential issues are considered.

### LOCALITY

Johandeo is located in Sebokeng a township in southern Gauteng, near the industrial city of Vanderbijlpark. The geographical coordinates are (26° 36'8.24"S) (27°48' 58.84"E). The proposed site for the development is formally described as Holding 63, Johandeo. The site falls within the jurisdiction of the Emfuleni Local Municipality forming part of the Sedibeng District Municipality.

The proposed site is approximately 12 km from Vanderbijlpark and 15 km from Vereeningeng. The site is located at the corner of Makholong Street and the Golden Highway (R28), south west of Sebokeng.

### LEGAL FRAMEWORK

According to the National Environmental Management Act (Act no. 107 of 1998), EIA Regulations promulgated on the 4<sup>th</sup> December 2014 a Basic Assessment process should be

undertaken for the proposed development. The following listed activities from listing notice 1, no. R.983 of the 2014 Environmental Impact Assessment Regulations will be applied for.

**GN R. 983**

**14)** The development of facilities or infrastructure, for the storage, or for the storage and handling, of a dangerous good, where such storage occurs in containers with a combined capacity of 80 cubic metres or more but not exceeding 500 cubic metres

**27)** The clearance of an area of 1 hectares or more, but less than 20 hectares of indigenous vegetation, except where such clearance of indigenous vegetation is required for-

- (i) The undertaking of a linear activity

**NEED AND DESIRABILITY**

There is a need for a filling station and a shopping centre at the study site. The site is located at the corner of two busy roads which are Makholong Street and Golden Highway (R28)/ R553. There are no filling stations or retail centres located on that route, towards Johandeo.

The filling station forms part of a larger development which includes the construction of a retail centre which will service the people of Johandeo and the greater Sebokeng community. The proposed retail centre will include a hardware store, several retail outlets (Pep and Rage etc.) and food outlets. The retail centre in conjunction with the filling station will provide a much convenient stop for motorists travelling on the Golden Highway (R28)/R553.

The filling station and the proposed retail facilities will not only service motorists but also the local community of Johandeo, who do not have a retail centre nearby as Sebokeng Plaza and Thabang Shopping Centre are located

kilometres away from Johandeo. There are a few filling Stations located in Sebokeng but none of them are located in Johandeo, hence the people of Johandeo have to travel quite a distance to refuel in central Sebokeng where most of the filling Stations are situated.

**PUBLIC PARTICIPATION**

According to the 2014 Environmental Regulations, the Basic Assessment requires a public participation process whereby Interested and Affected Parties (I&APs) are invited to submit their comments or views on the proposed project. I&APs are invited to participate by registering with the Environmental Assessment Practitioner (EAP) undertaking the environmental process. The public participation process is intended to:

- Provide the public with information on the proposed development
- Provide the public with details on the environmental authorisation process
- Provide I&APs an opportunity to seek clarity and raise any issues or concerns.

Should you wish to register as an I&AP, please complete the I&AP registration form at the end of this document before the close of this commenting period.

**CONTACT DETAILS**

**Contact person: Ms. Ayanda Mnyandu  
Environmental Consultant**

**Tel: 031 502 1822**

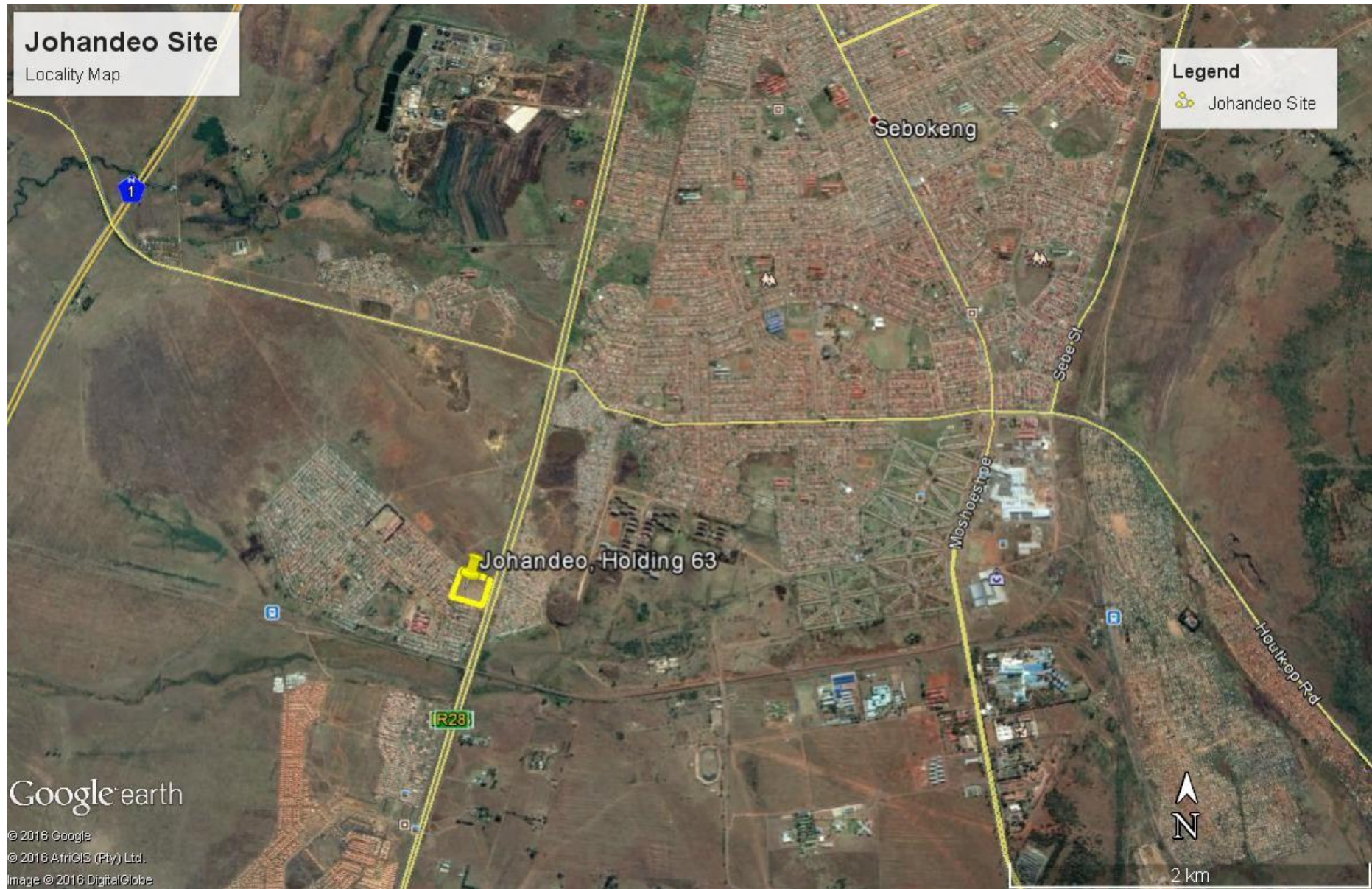
**Cell: 074 229 1775**

**Fax: 086 537 9397**

**Email: [ayanda@nsenvironmental.co.za](mailto:ayanda@nsenvironmental.co.za)**

**First Floor, Unit 2, Block 1a, Kingfisher Office  
Park, 28 – 32 Siphosethu Road, Mount  
Edgecombe, 4032**


**PO Box 65065, Reservoir Hills, Durban, 4090**



# Johandeo Site

Locality Map

## Legend

 Johandeo Site

Johandeo, Holding 63

Sebokeng

Moshoele St

Sebe St

Houkop Rd

R28

Google earth

© 2016 Google  
© 2016 AfriGIS (Pty) Ltd.  
Image © 2016 DigitalGlobe



2 km

# NOTICE

## Environmental Basic Assessment

Notice is hereby given in terms of the National Environmental Management Act 1998 (Act No. 107 of 1998), of intent to carry out the following activity:

### ACTIVITY

The proposed construction of a filling station and associated facilities (retail facilities, food outlets, hardware store and internal roads) at the corner of Makholong Street and the Golden Highway (R28) in the established township of Johandeo, located south west of Sebokeng in Gauteng. The proposed construction will approximately cover 3 hectares of land.

### LOCATION

Holding 63, Johandeo

### GEOGRAPHICAL CO-ORDINATES

(26° 36'8.24"S) (27° 48' 58.84"E)

### PROJECT APPLICANT

Stone Cold Enterprise 10 (Pty) Ltd.

### ENVIRONMENTAL ASSESSMENT PRACTITIONER

NS Environmental (Pty) Ltd

#### *Contact person*

Ms. Ayanda Mnyandu

Environmental Consultant

Tel: 031 502 1822

Cell: 074 229 1775

Fax: 086 537 9397

E-mail: [ayanda@nsenvironmental.co.za](mailto:ayanda@nsenvironmental.co.za)

Postal Address: PO Box 65065, Reservoir Hills, Durban, 4090

In order to register as an interested and affected party, please submit your name, contact information, and interest in the project in writing to the consultant within 30 days of this advertisement. Further information on the project can also be obtained from the above contact details.

**GDARD Ref. No.: 002/16-17/E0140**

**Date of Notice: 16 November 2016**

### Interested & Affected Party (I&AP) Registration Form

Name and Surname	
Landline number	
Cell number	
Fax number	
Email address	
Physical address	
Postal address	
Project name	
Date of comment	
Comment	

**Please Email, fax, or post to:**

EMAIL	FAX	POSTAL ADDRESS
<a href="mailto:ayanda@nsenvironmental.co.za">ayanda@nsenvironmental.co.za</a>	086 537 9397	PO Box 65065, Reservoir Hills, Durban, 4090