

BACK GROUND INFORMATION DOCUMENT

Basic Assessment in terms of NEMA and the MPRDA

Thikho Resources: Manganese and Iron Ore, Prospecting Right Application

Reference: NC 30/5/1/1/2(12243) PR, NC 30/5/1/1/2(12242) PR & NC 30/5/1/1/2(12244) PR

February 2019

PURPOSE

This Background Information Document ("BID") is intended to provide Interested and Affected Parties ("I&APS") with information including details regarding the Basic Assessment Application and the manner in which I&APs can provide input or voice any concerns regarding the application. This document also forms part of the formal public participation process (PPP) for the proposed application.

If you wish to register as an I&AP please complete the registration form included in this BID, along with any comments or concerns you wish to voice to the contact listed below. Your details will then be included in the database of stakeholders and you will receive further information as well as documents for review and comment as they become available.

Your comments will ensure that all issues of concern are incorporated into the final Basic Assessment Report and be considered in all decision-making processes by the Department of Mineral Resources.

For Enquiries please contact:

Ms Sarah Wanless
Menar Holding
PO Box 2030, Pinetown, 2123
Email: sw@menar.com
Tel: 011 783 7996
Or
Ms Niketiwe Dlamini
Email: nd@sitatunga.com
Tel: 011 783 7996 /0767274968

BACKGROUND

Thikho Resources submitted a Prospecting Right Application to the Department of Mineral Resources (DMR) on 27 September 2018. The application has since been accepted by the DMR, and Thikho Resources has been instructed to proceed with the PPP and relevant environmental processes.

PROJECT DESCRIPTION

The Prospecting Right application has been submitted to prospect Manganese and Iron Ore, on:

- The remaining extent of the Farm Annfield 178. Proposed site is located approximately 16km South East of Kuruman, under the Ga-Segonyana Local Municipality, in the Northern Cape Province.
- The portions 1,2 and 3 of the farm Malakgohli 203. The proposed site is located approximately 50km South East of Kuruman, under the Ga-Segonyana Local Municipality, in the Northern Cape Province. The total area that will be affected is approximately 3272.525643 Ha.
- The Farm Smauswani Noord 205. The proposed site is located approximately 45km South East of Kuruman, under the Ga-Segonyana Local Municipality, in the Northern Cape Province) and the total area that will be affected is approximately 1746.995983 Ha

(refer to **Appendix 1, 2, 3– Project Locality** and **Appendix 4,5, 6,– Site Map**).

Prospecting activities will comprise of both non-invasive and invasive methods and may include: desktop and literature studies, geophysical surveys, field surveys and drilling.

The Prospecting Right process is expected to be undertaken over a period of 3 years with the potential for renewal depending on results and studies undertaken.

PROJECT MOTIVATION

The mining industry plays a vital role in the growth and development of South Africa and its economy. Since the earliest discoveries of minerals in the region, this rich endowment of mineral resources has driven South Africa's social and economic development. Mining continues to be one of the most significant sectors of our economy, providing jobs, growing our GDP and building relations with international trading partners. Although prospecting activities will not benefit the surrounding communities or create employment. It will confirm the availability of minerals and the feasibility for future mining prospects.

LEGISLATIVE BACKGROUND

The Prospecting Right Application is subject to the following Acts:

- the National Environmental Management Act, 1998 (Act No.107 of 1998) ("NEMA"); and,
- the Mineral and Petroleum Resources Development Act, 2002 (act no.28 of 2002) ("MPRDA").

In terms of the MPRDA an application for a Prospecting Right is subject to an application for environmental authorisation in terms of NEMA.

The following listed activities are applicable to the proposed project, and thus the application is subject to a Basic Assessment ("BA") and Environmental Management Plan report.

- **NEMA GN 983, Listing Notice 1, Activity Number 20:** Any activity including the operation of that activity which requires a prospecting right in terms of section 16 of the MPRDA, including associated infrastructure, structures and earthworks, directly related to the prospecting of a mineral resource, including activities for which an exemption has been issued in terms of section 106 of the MPRDA.

Ecolead Environmental Solutions have been appointed as the Independent Environmental Assessment Practitioners (“EAP”) to review the BA Report and to oversee the PPP for the Prospecting Right Application.

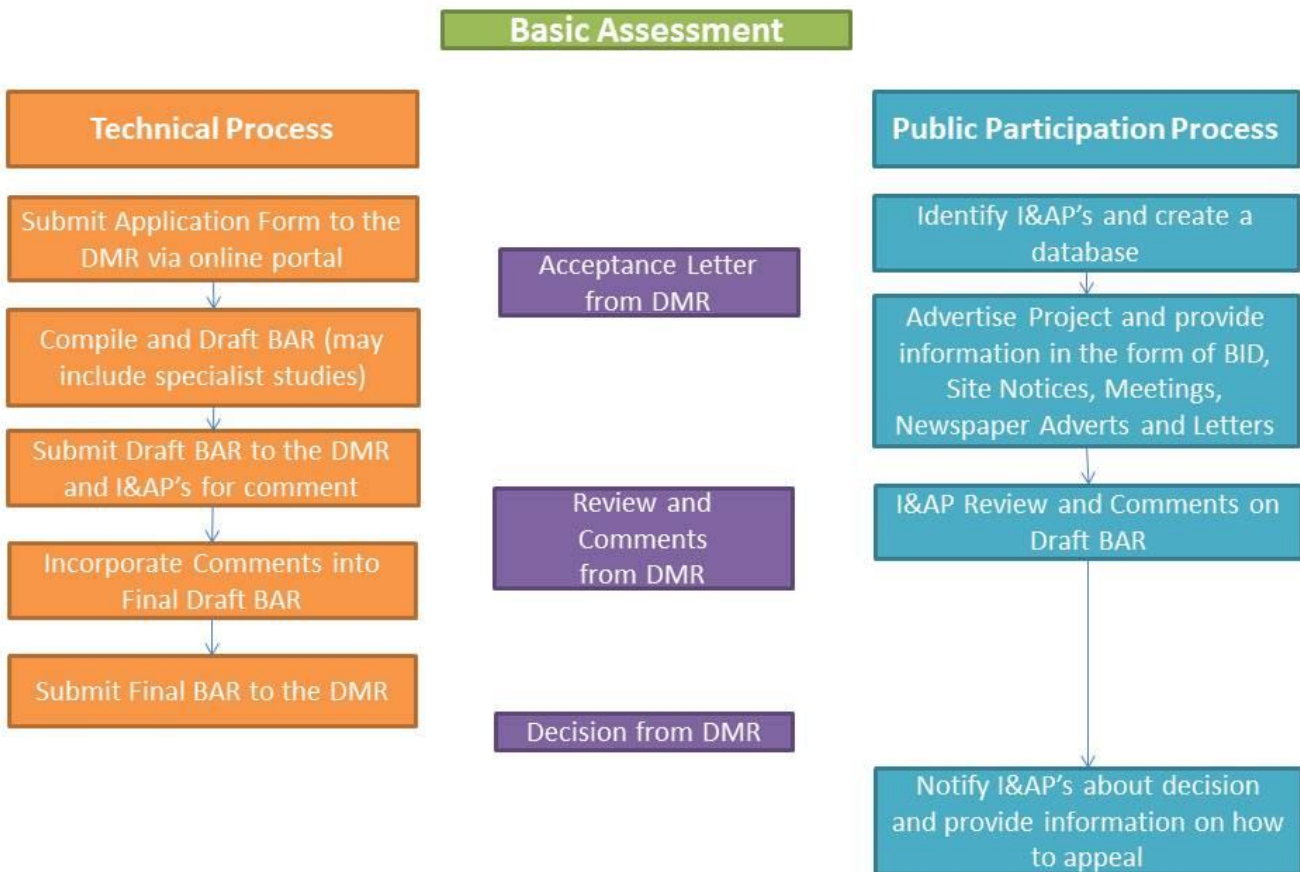
BASIC ASSESSMENT

The BA Process is a tool used to obtain an objective view of the potential impacts of a proposed project including environmental, social and economic impacts. A BA Report is compiled as part of the Prospecting Right Application to ensure that potential impacts associated with the proposed prospecting activities are identified, considered and mitigated. It is intended to supply the competent authority with sufficient information to make an informed decision in granting or refusing an environmental authorisation associated with the Prospecting Right application.

The Basic Assessment Report will encompass the following:

- Description of the local environment including environmental conditions, historic and cultural aspects and socio-economic conditions,
- Identification and assessment of the significance of potential impacts of the proposed prospecting activities on the local environment,
- Evaluation of the proposed mitigation and management options available to minimise any negative impacts and enhance any positive impacts,
- A record of any issues, comments and concerns raised by I&AP’s and minutes of any meetings held with stakeholders.

The BA can be described as two interlinked processes which result in a BA Report. Namely the Technical Process and the Public Participation Process:



Impacts Associated with Listed Activities

The majority of impacts will be associated with the invasive prospecting stage of the project. The invasive prospecting is comprised of borehole drilling at various locations within the Prospecting Area in order to determine the viability of any future mining operation. Impact assessment methods were developed to: (1) identify the potential impacts of a proposed development on the social and natural environment; (2) predict the probability of these impacts and (3) evaluate the significance of the potential impacts. The timeframe for the prospecting activities is approximately 5 years with invasive prospecting activities expected to span approximately 12 months. The following activities will be undertaken or are associated with prospecting activities to be undertaken:

(a) Access roads

Thikho will require access to the site for both person and machinery associated with drilling activities. Potential impacts associated with the creation and use of access roads include soil compaction, potential hydrocarbon contamination of soil, potential disturbance to wetlands and buffer zones (in instances where prospecting activity proceeds indiscriminately), generation of dust on gravel roads, emissions into the atmosphere through the use of diesel powered equipment, machinery and vehicles, increased noise levels and potential road degradation. However; with the appropriate mitigation strategies in place, including applying buffers to sensitive landscapes and using existing roads and access tracks wherever possible, the significance of these potential impacts can be reduced to low/moderate-low.

(b) Drilling

Potential impacts associated with the borehole drilling include localised dips in topography if boreholes collapse after material is displaced, cracks and disruption to geological layers, potential compaction of soils, potential hydrocarbon contamination of soil, potential disturbance to wetlands and buffer zones (in instances where prospecting activity proceeds indiscriminately), cracks and disruption to aquifers and irresponsible use of water and water wastage, emissions into the atmosphere through the use of diesel powered equipment, machinery and vehicles, increased noise levels and potential road degradation. However, with the appropriate mitigation strategies in place such as applying buffers to sensitive landscapes, using the latest technology, using biodegradable lubricant, casing the boreholes to prevent collapse and contamination of groundwater resources and the rehabilitation of each borehole drilling site following drilling, the significance of these impacts can be reduced to low/moderate-low.

(c) Ablution facilities (portable toilets)

Potential impacts associated with ablation facilities on site include potential contamination of soil with sewage and potential contamination of surface water bodies with sewage. If the appropriate mitigation measures are adhered including making use of portable toilets, buffering of sensitive landscapes, using reputable contractors and disposing of sewerage at a registered sewerage facility the potential impact significance is low.

(d) General overall prospecting activities

The following impacts are potentially associated with the prospecting programme as a whole; potential contamination of soil with indiscriminately dumped waste or littering, potential contamination of surface water features with indiscriminately dumped waste or littering, potential contamination of groundwater through seepage from indiscriminately dumped waste or litter, alien invasive encroachment and alienation of, and disturbance to, animals. The impact significance can be reduced to low with the appropriate mitigation measures including adherence to the environmental management plan, educating all persons working on site regarding best environmental practice, and proper rehabilitation of borehole sites.

The general overall prospecting activities potential for temporary employment during this phase and socio-economic benefits for small business in the area, as well as the potential for further development should the prospecting programme be fruitful. No mitigation measures are necessary as this is a positive impact for the area.

PUBLIC PARTICIPATION

An important aspect of the BA process is the public participation process which allows I&AP's an opportunity to provide comments on the proposed activities and be informed about the process. This component will allow I&AP's to both influence the course of the technical investigations and review its findings.

I&AP's are any stakeholders, land owners and any otherwise interested or affected persons who would like to comment on or be informed about the project.

DECISION MAKING BY THE COMPETENT AUTHORITY

The Department of Mineral Resources ("DMR") is the competent authority in respect of both the NEMA and the MPRDA processes. Based on the information provided in the BA, the DMR will make a decision regarding the granting of the Prospecting Right authorisation. A Prospecting Right requires an approved environmental authorisation and this, in conjunction with other information such as BEE, technical and financial competence will form part of the decision making for the Prospecting Right application.

Once the competent authority has reached a decision regarding the granting or rejection of the Environmental Authorisation all I&AP's will be notified and given direction and information about the appeals process.

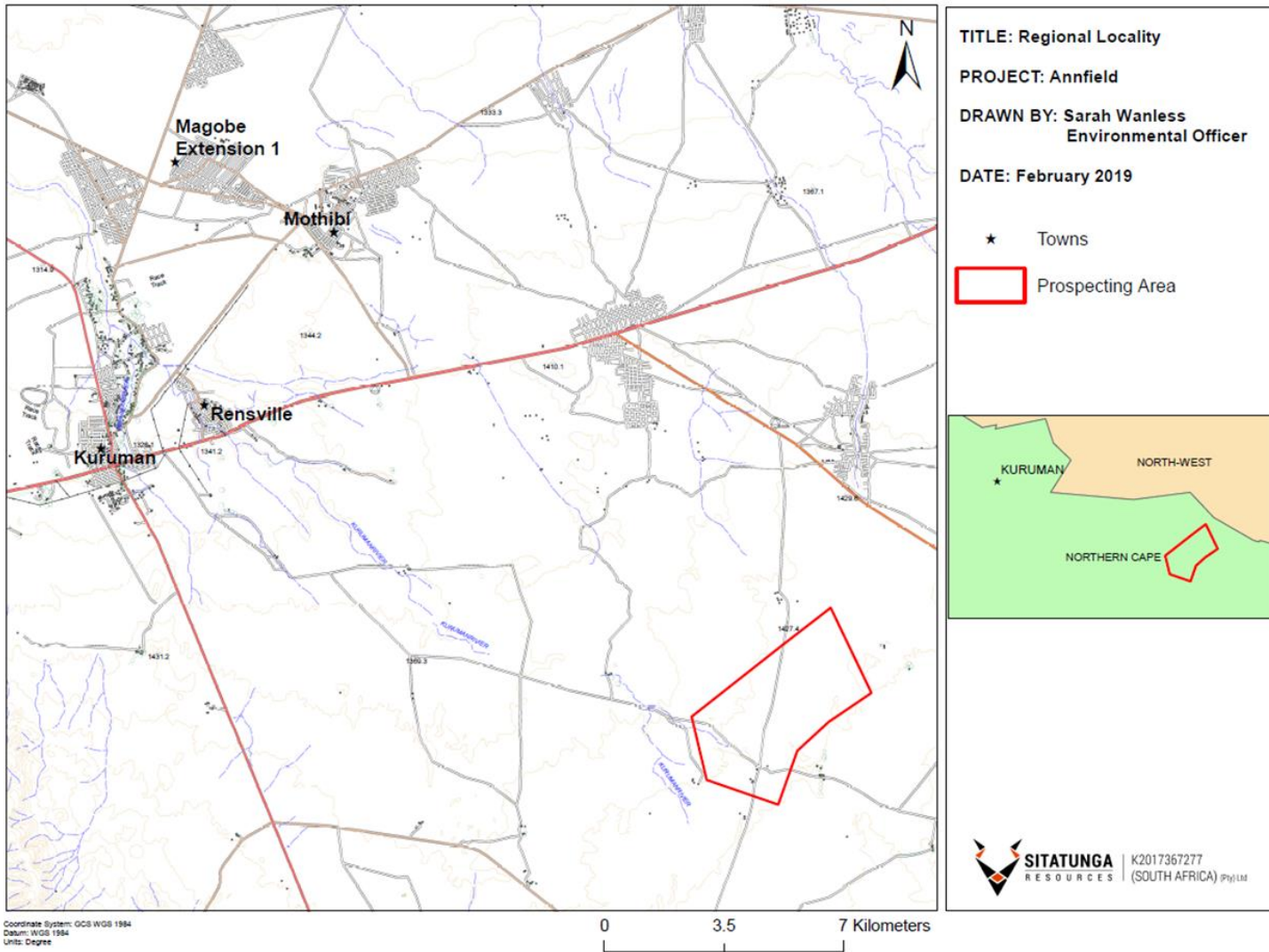
TIME FRAMES AND IMPORTANT DATES

The Draft BA and EMP Report will be available for review from **20 February 2019** at **the Kuruman Local Municipality Library**. An electronic copy will also be circulated via email to registered I&APs.

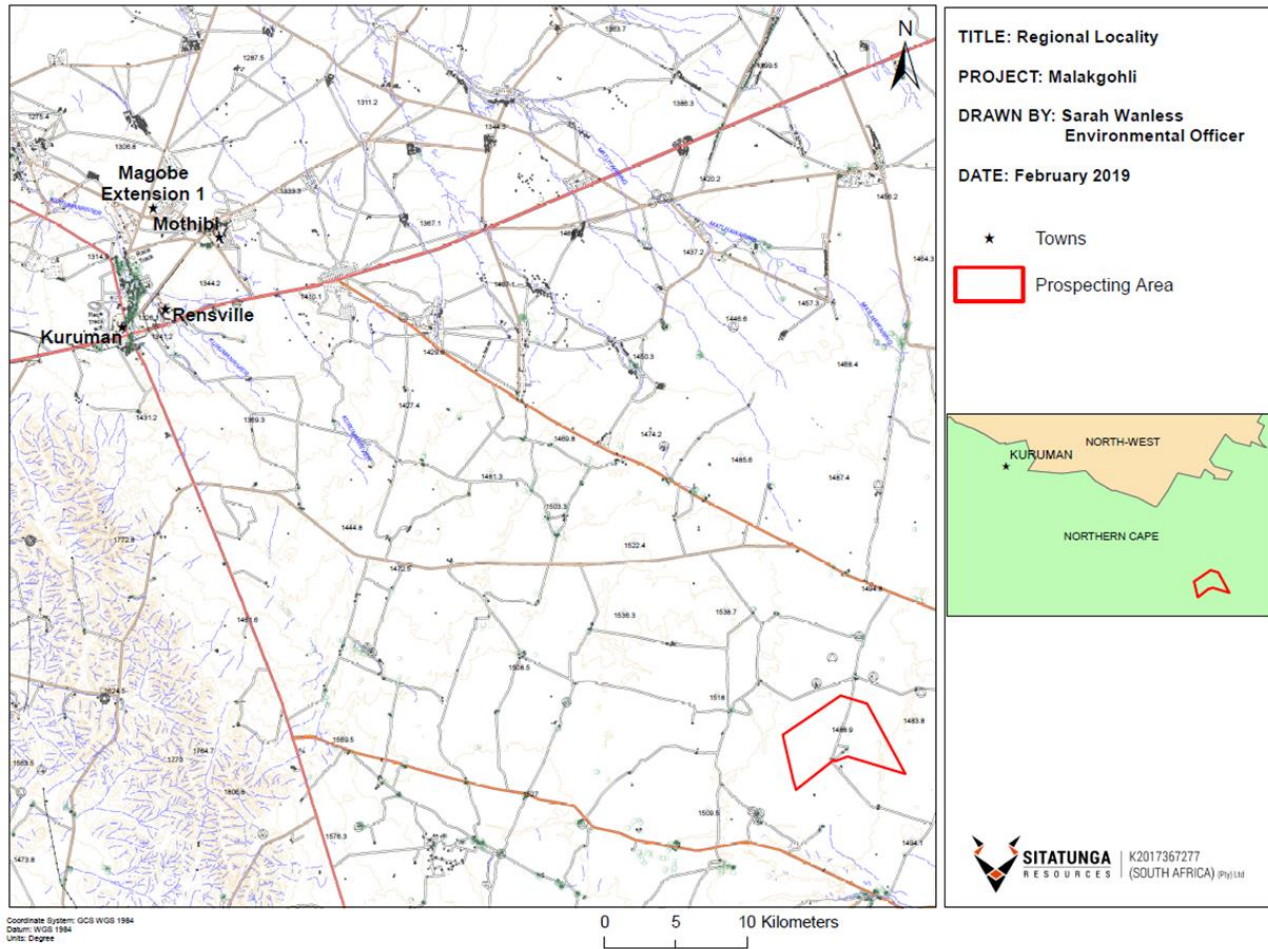
I&AP's are invited to review the report and kindly submit any comments to reach Ms. Sarah Wanless or Ms Dlamini by no later than **20 March 2019** using the contact details provided below.

Please see page 11 for the I&APs Registration form

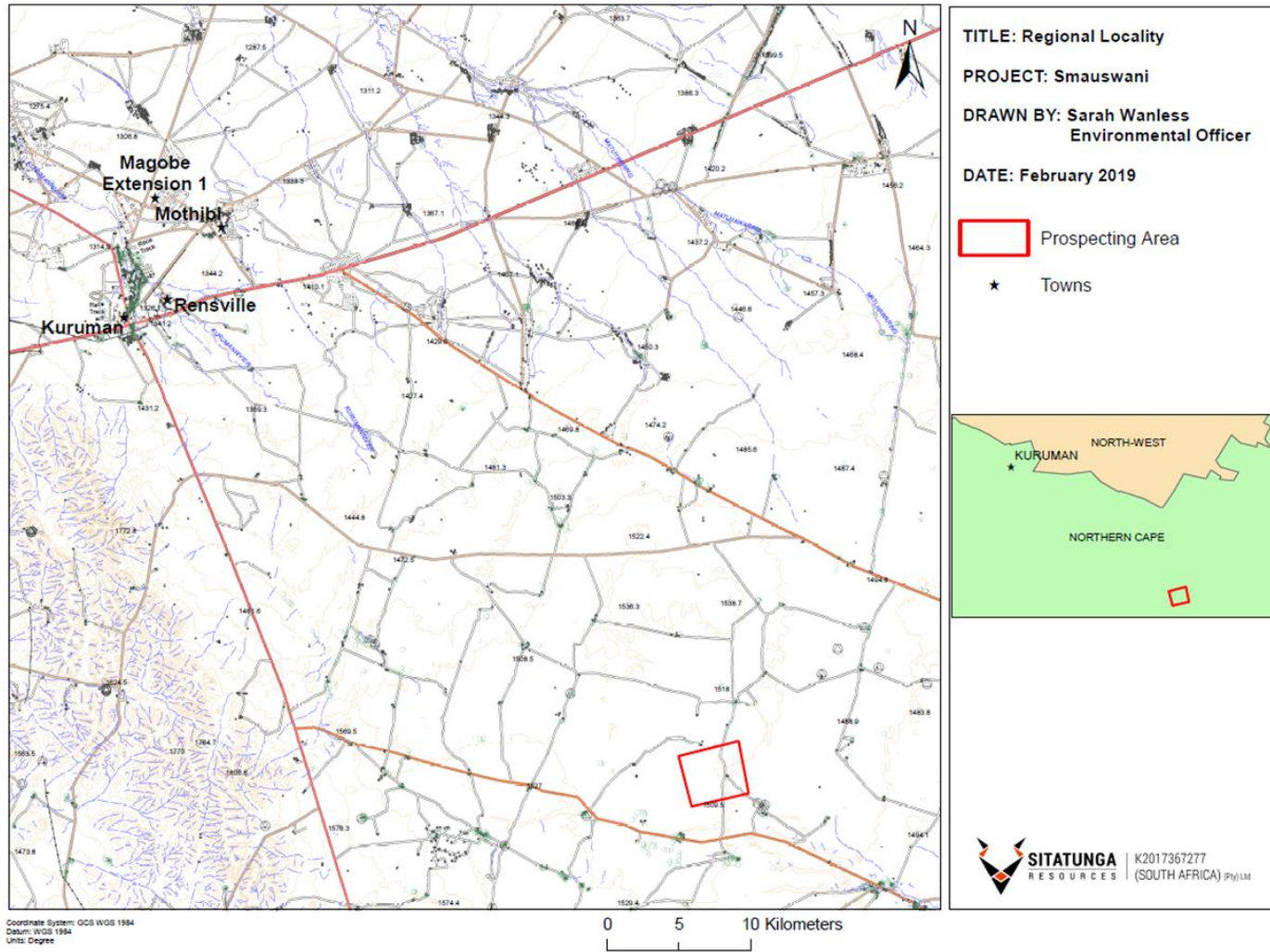
Appendix 1: Locality of Annfield Prospecting Area, Northern Cape Province



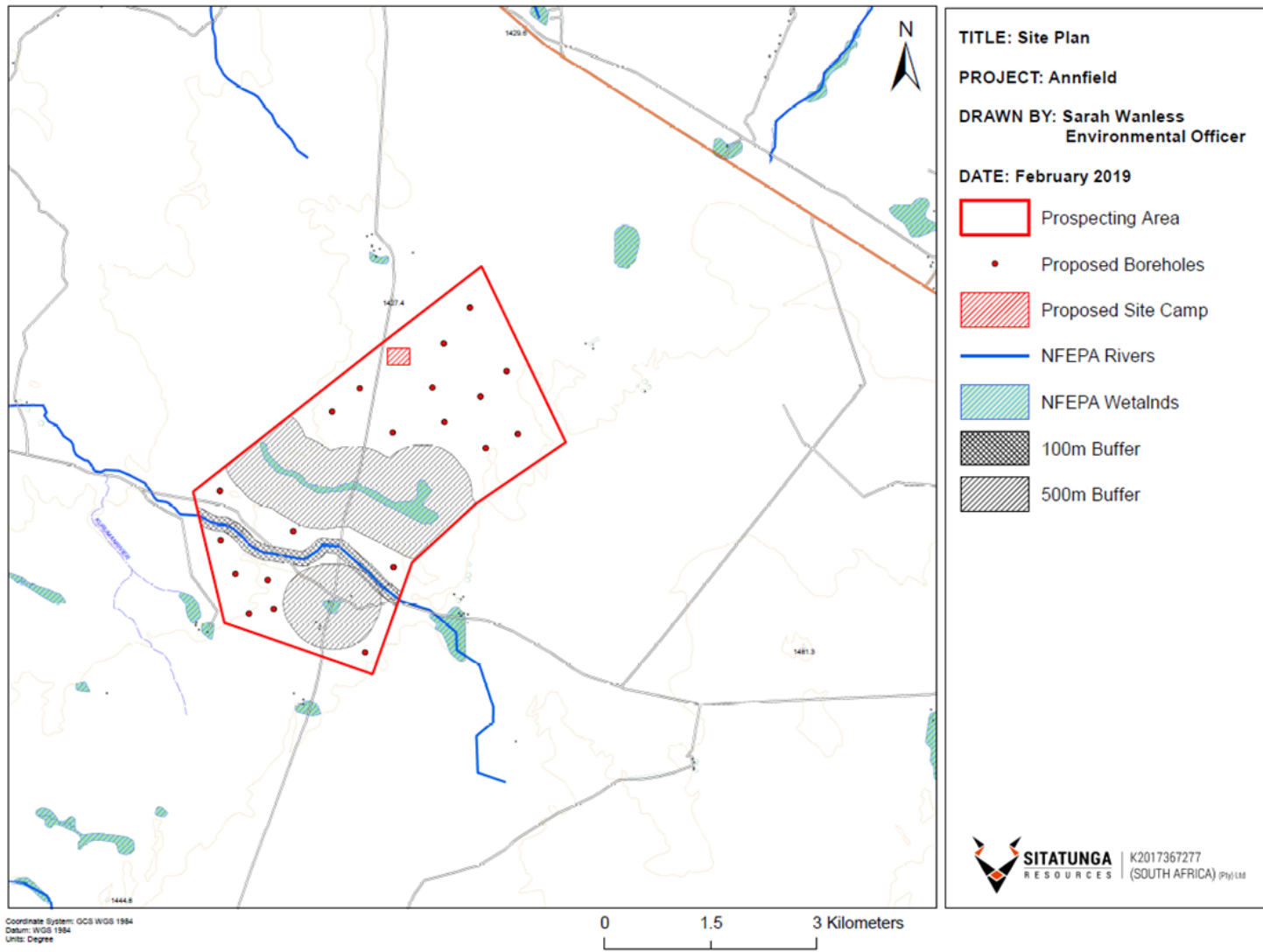
Appendix 2: Locality of Malakgohli Prospecting Area, Northern Cape Province



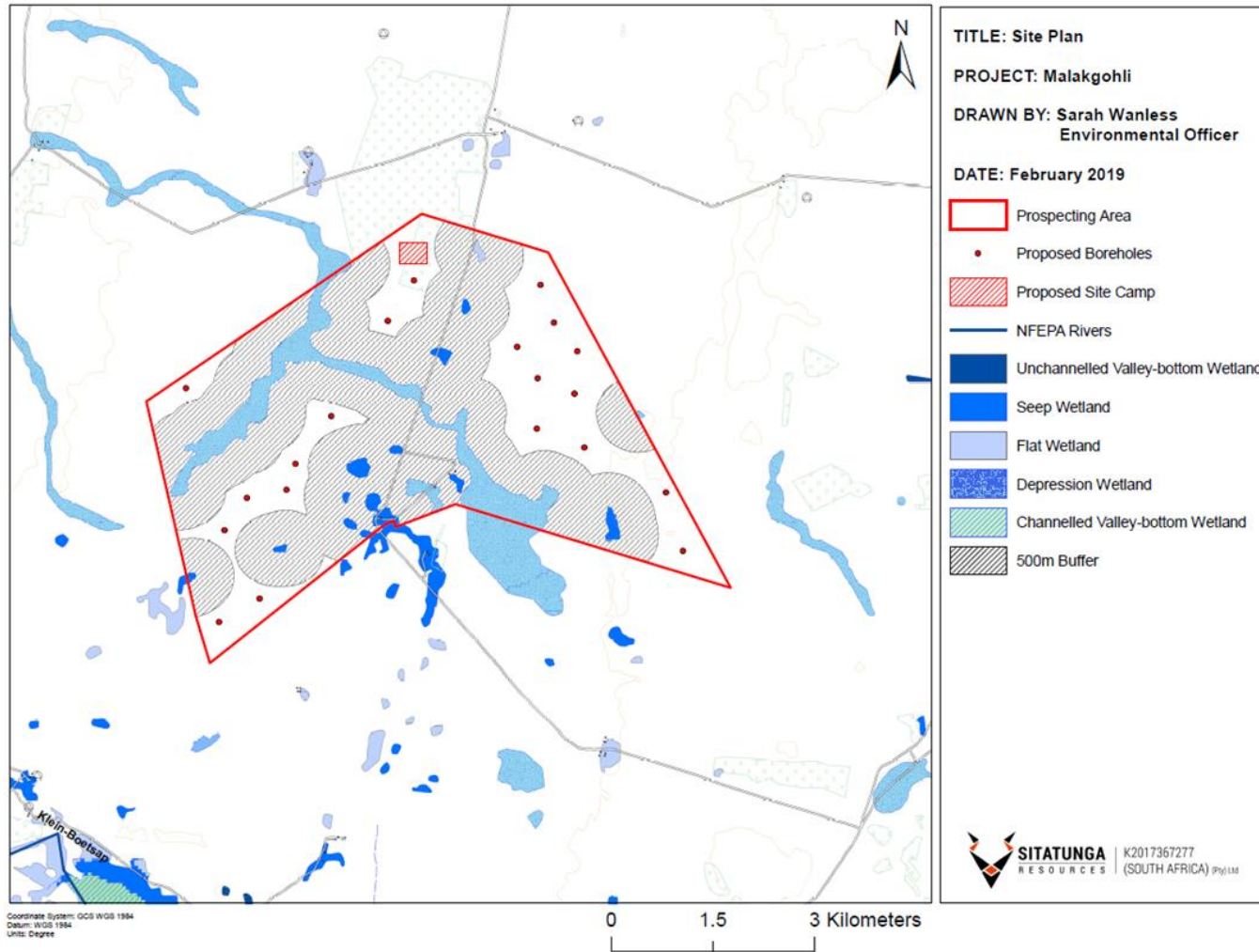
Appendix 3: Locality of Smauswani Prospecting Area, Northern Cape Province



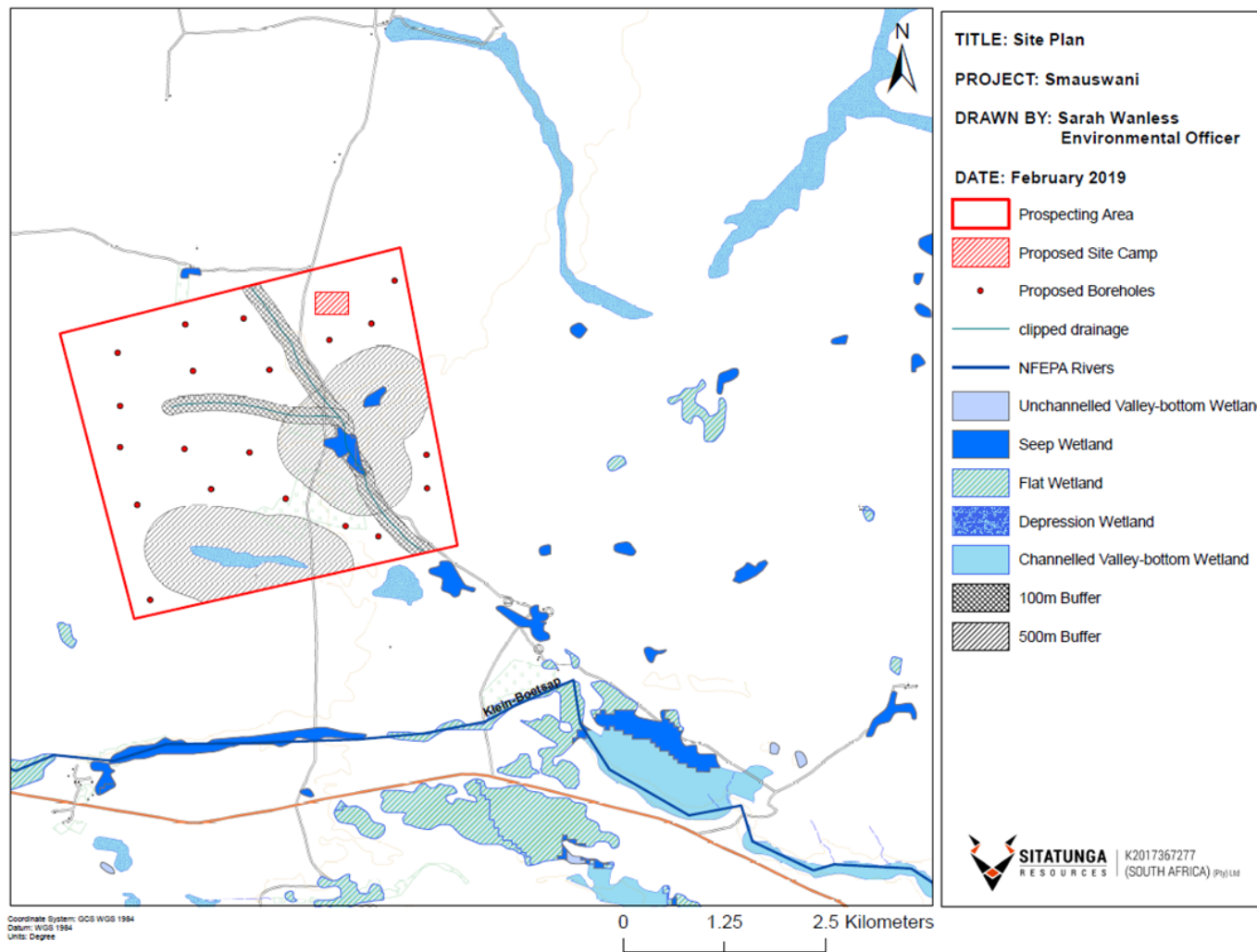
Appendix 4: Site Map for Annfield Prospecting Area, Northern Cape Province



Appendix 5: Site Map for Malakgohli Prospecting Area, Northern Cape Province



Appendix 6: Site Map for Smauswani Prospecting Area, Northern Cape Province



I&AP REGISTER

FULL NAMES..... ORGANIZATION/AFFILIATION/REASON FOR INTEREST.....

TELEPHONE..... FAX..... EMAIL.....

POSTAL ADDRESS.....

Preferred method of communication (circle the appropriate option); Telephone/Fax/Email/Post

Please state interest/ comments below:

.....
.....
.....
.....
.....

Please complete and return to the contact listed below in order to register as an I&AP

Ms Sarah Wanless
Menar Holdings
PO. Box 2030 Pinegowrie,2123
Email: sw@menar.com
Telephone: 011 783 7996

OR
Ms Niketiwe Dlamini
Sitatunga Resources
Email: nd@sitatunga.com
Telephone: 011 783 7996/ 076 727 4968