



PROPOSED BULK WATER PIPELINE TO THE BOXWOOD DEVELOPMENT, EAST LONDON, BUFFALO CITY MUNICIPALITY.

INTRODUCTION

The Eastern Cape Department of Human Settlement (DHS) has commenced the construction of a low-cost housing development on the Remainder of the Farm 862, within Buffalo City Metropolitan Municipality (BCMM), approximately 20km from East London. The development forms part of the resettlement programme for the Orange Grove community, currently occupying land near the East London airport in Ward 30. Subsequent to Environmental Authorisation being granted for this development (DEDEAT Ref: EC/7/A/LN2/15/15-17), bulk service infrastructure is required to service the development, and will include the following;

1. A water pipeline approximately 2 340m long running with a diameter of 400mm, drawing water from an existing connection point which was designed for future extension of the line.
2. A 6ML concrete reservoir will be constructed in the Boxwood development site (on Remainder of the Farm 862)

PROJECT LOCATION

The site is located approximately 20km from East London along the R346. The pipeline will travel from the Remainder of the Farm 863, along a servitude on the Northern border of Portion 1 of the Farm 862 and terminate at a reservoir on Remainder of the Farm 862 (Figures 1 & 2).

RELEVANT LEGISLATION

According to the National Environmental Management Act, 1998 (Act No. 107 of 1998), as amended in 2006 and the Environmental Impact Assessment Regulations (2017), the proposed development requires an application for Environmental Authorisation to be submitted to the Department of Environmental Affairs (East London) and a Basic Environmental Assessment Process to be followed.

The following listed activities may be applicable to the proposed construction of the Boxwood Bulk Water Supply line:

| Government Notice No. R327 (2017) Listing Notice 1 Activity No(s): | Details of Activity(ies) requiring Basic Assessment | Proposed activities relevant to the Boxwood Bulk Water Supply |
|--|---|---|
| 9 | The development of infrastructure exceeding 1 000 metres in length for the bulk transportation of water or storm water— (i) with an internal diameter of 0,36 metres or more; or (ii) with a peak throughput of 120 litres per second or more; excluding where— (a) such infrastructure is for bulk transportation of water or storm water or storm water | The proposed pipeline will have an internal diameter of 400mm (0,4m) and transport water for 2 340m to the Boxwood Development. |

| | | |
|---|--|--|
| | drainage inside a road reserve or railway line reserve; or (b) where such development will occur within an urban area. | |
| Government Notice No. R324 (2017) Listing Notice 3 Activity No(s): | Details of Activity(ies) requiring Environmental Impact Assessment Report | |
| 2 | <p>The development of reservoirs, [for bulk water supply] excluding dams, with a capacity of more than 250 cubic metres.</p> <p>a. Eastern Cape</p> <p>i. In a protected area identified in terms of NEMPAA, excluding conservancies;</p> <p>ii. Outside urban areas, in:</p> <p>(aa) National Protected Area Expansion Strategy Focus areas;</p> <p>(bb) Sensitive areas as identified in an environmental management framework as contemplated in chapter 5 of the Act and as adopted by the competent authority;</p> <p>(cc) Sites or areas identified in terms of an international convention;</p> <p>(dd) Critical biodiversity areas as identified in systematic biodiversity plans adopted by the competent authority or in bioregional plans;</p> <p>(ee) Core areas in biosphere reserves;</p> <p>(ff) Areas within 10 kilometres from national parks or world heritage sites or 5 kilometres from any other protected area identified in terms of NEMPAA or from the core area of a biosphere reserve;</p> <p>(gg) In an estuarine functional zone, excluding areas falling behind the development setback line;</p> <p>(hh) Areas seawards of the development setback line or within 1 kilometre from the high-water mark of the sea if no such development setback line is determined; or</p> | A 6ML (6 000m ³) concrete reservoir is proposed within a Terrestrial Critical Biodiversity Area 2 (ECBCP 2007) |
| 12 | <p>The clearance of an area of 300 square metres or more of indigenous vegetation except where such clearance of indigenous vegetation is required for maintenance purposes undertaken in accordance with a maintenance management plan.</p> <p>a. Eastern Cape</p> <p>i. Within any critically endangered or endangered ecosystem listed in terms of section 52 of the NEMBA or prior to the publication of such a list, within an area that has been identified as critically endangered in the National Spatial Biodiversity Assessment 2004;</p> <p>ii. Within critical biodiversity areas identified in bioregional plans;</p> <p>iii. Within the littoral active zone or 100 metres inland from the high water mark of the sea, whichever distance is the greater, excluding where such removal will occur behind the development setback line on erven in urban areas;</p> <p>iv. Outside urban areas, within 100 metres inland from an estuarine functional zone; or...</p> | The activity may require clearing 300m ² or more within a Terrestrial Critical Biodiversity Area 2 (ECBCP 2007) |
| 14 | <p>a. Eastern Cape</p> <p>i. Outside urban areas:</p> | The planned reservoir will exceed 10m ² and falls within a Terrestrial Critical |

| | | |
|---|--|---|
| <p>The development of— (xii) infrastructure or structures with a physical footprint of 10 square metres or more;]</p> | <p>(aa) A protected area identified in terms of NEMPAA, excluding conservancies; (bb) National Protected Area Expansion Strategy Focus areas; (cc) World Heritage Sites; (dd) Sensitive areas as identified in an environmental management framework as contemplated in chapter 5 of the Act and as adopted by the competent authority; (ee) Sites or areas identified in terms of an international convention; (ff) Critical biodiversity areas or ecosystem service areas as identified in systematic biodiversity plans adopted by the competent authority or in bioregional plans; (gg) Core areas in biosphere reserves; (hh) Areas within 10 kilometres from national parks or world heritage sites or 5 kilometres from any other protected area identified in terms of NEMPAA or from the core area of a biosphere reserve; (ii) Areas seawards of the development setback line or within 1 kilometre from the high-water mark of the sea if no such development setback line is determined; or (jj) In an estuarine functional zone, excluding areas falling behind the development setback line; or</p> | <p>Biodiversity Area 2 (ECBCP 2007)</p> |
|---|--|---|

STUDY TEAM

Scherman Environmental Consulting has been appointed to conduct the Basic Assessment. The consulting team includes Sandy van der Waal (Pr. Sci. Nat.), a registered Environmental Assessment Practitioner (EAPSA No 2019/239). Specialist Studies will include;

- Ecological Specialist Assessment (Dr Patsy Scherman, Dr Wayne Vos & SL van der Waal)
- Phase 1 Archaeological Impact Assessment (Karen van Ryneveld)

PUBLIC PARTICIPATION

This Background Information Document (BID) provides stakeholders, interested and/or affected parties (I&APs) with details about the proposed development and the relevant Environmental Authorisation process being followed. I&APs are encouraged to register in order to receive key information regarding the development and to provide a manner by which you may raise any relevant issues or concerns.

As per the requirements of the National Environmental Management Act (NEMA) and related legislation, 'Public Participation Process' (PPP) will be conducted throughout the Basic Assessment. The key objective is to provide Interested and/or Affected Parties (I&APs) with sufficient and transparent information on an on-going basis. The PPP also affords any member of the public the opportunity to comment on the findings of both the Draft Basic Assessment Reports (BAR).

Public Participation will include the following:

- Placement of site notices
- Notification of relevant stakeholders & I&APs
- Distribution of Background Information Document
- Release of Draft Basic Assessment Report (BAR) for public review (30 days)

- Advertisements in a district newspaper
- Ongoing liaison with I&APs
- Compilation of Comments & Responses Report for input to Final BAR
- Final liaison with I&APs
- Inform I&APs of decision made by the Department of Environmental Affairs (Environmental Authorisation granted/Not granted & conditions)
- Advertise decision made by the Department of Environmental Affairs
- Manage appeals process

CONTACT DETAILS

Should you wish to register as an Interested and/or Affected Party (I&AP), submit any comments or concerns, or if you have any questions, please contact Ms Sandy van der Waal, email: sandyvanderwaal@gmail.com

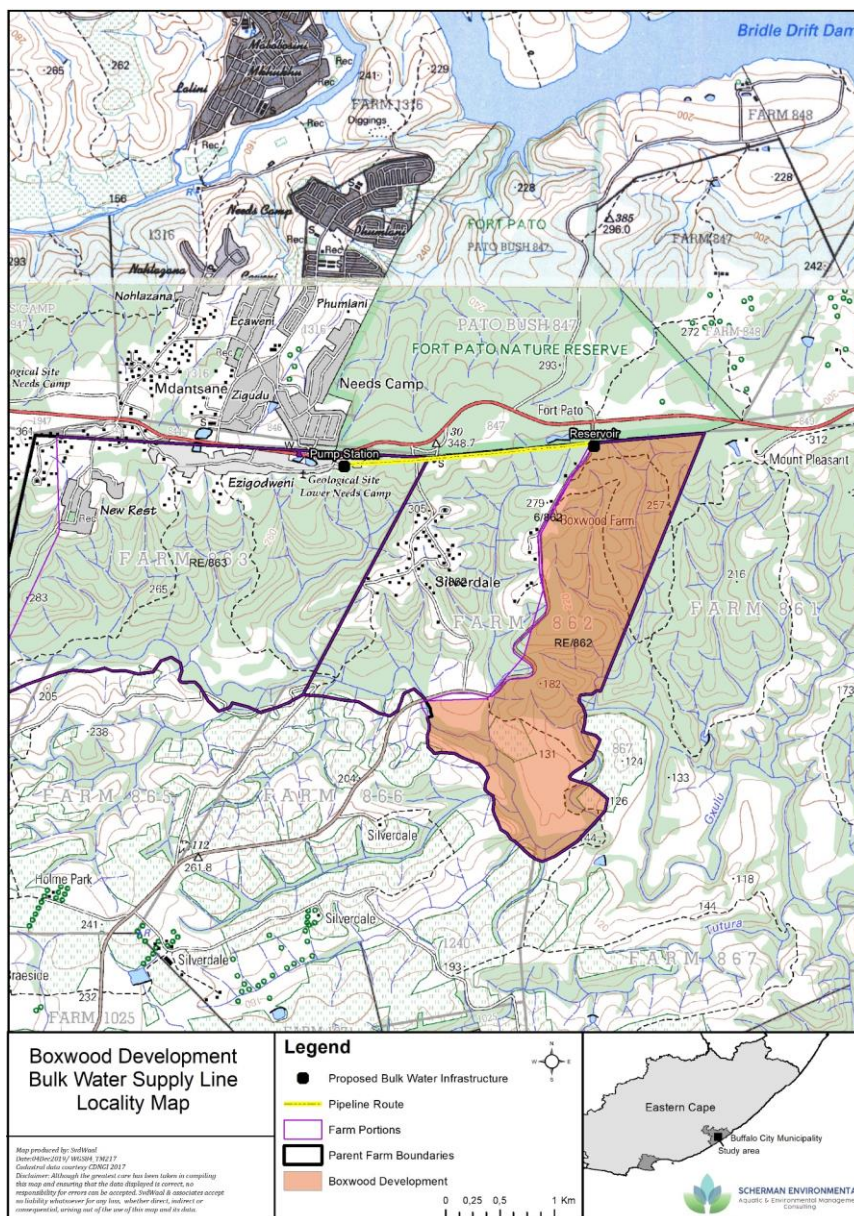


Figure 1: Locality map showing the proposed bulk water pipeline to the Boxwood Development.

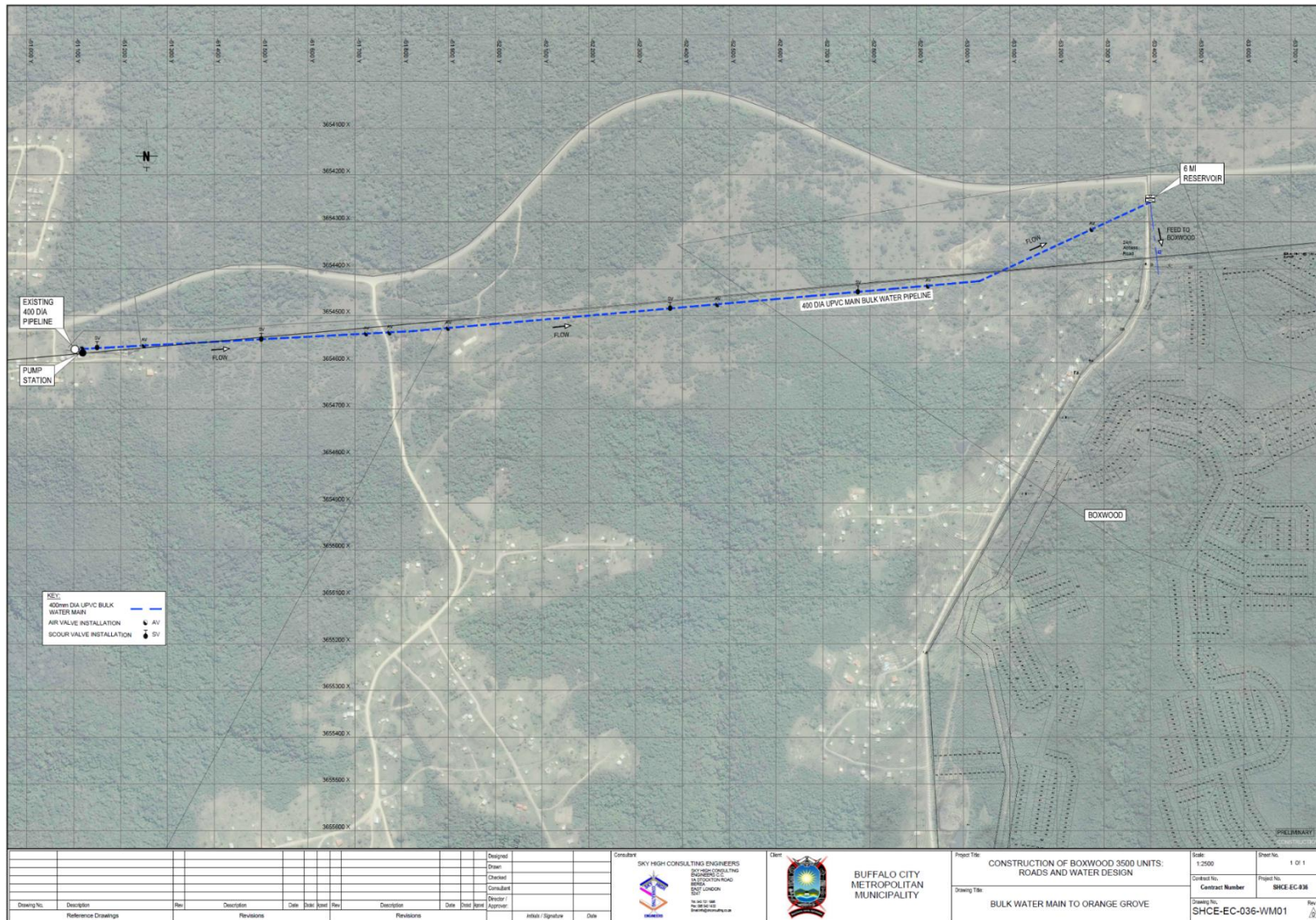


Figure 2: Detailed route of the proposed Bulk Water Pipeline.