

# Basic Assessment Process, Waste Management License and Water Use License Application for the Proposed Establishment of Mandalay Piggery, KwaDukuza (Stanger), KwaZulu-Natal

## BACKGROUND INFORMATION DOCUMENT

June 2015



### WHAT IS THE PURPOSE OF THIS DOCUMENT?

The purpose of this document is to:

- ◆ Inform Interested and Affected Parties (I&APs) about the proposed project, and to invite them to participate;
- ◆ Provide a brief background on the proposed project; and
- ◆ Explain the aims and objectives of the Environmental Basic Assessment process.



### WHAT IS THE BACKGROUND TO THIS DEVELOPMENT?

Mandalay Farm Agricultural Co-Operative Limited, with support from the Department of Agriculture and Rural Development (DARD) wish to establish a 50 sow piggery on the Ama-superco2 (Pty) Ltd t/a Mandalay sugar cane farm (remainder of portion 22 of 4 of the farm Nonoti Peak No. 2609) in KwaDukuza (Stanger), KwaZulu-Natal. The Mandalay sugar cane farm is approximately 163 ha in extent, with 124 ha currently under sugar cane cultivation. A 4ha compound and main house is also present on the site.

In terms of the Environmental Impact Assessment (EIA) Regulations 2014, under Section 24(5), 24M and 44 of the National Environmental Management Act (Act No 107 of 1998), published in Government Notice No. R. 982 of 2014, the National Environmental Management: Waste Act (No 59 of 2008) under Government Notice No. R. 912 of 2013 and Section 21 of the National Water Act (36 of 1998) the proposed development triggers the following Listed Activities and thus requires a Basic Assessment process to be conducted:

GNR 983	Part 4	<i>The development and related operation of facilities or infrastructure for the concentration of animals for the purpose of commercial production in densities that exceed ii) 8m<sup>2</sup> per small stock unit and b) more than 250 pigs per facility excluding piglets that are not yet weaned.</i>
GNR 983	Part 8	<i>The development and related operation of hatcheries or agri-industrial facilities outside industrial complexes where the development footprint covers an area of 2000 m<sup>2</sup> or more.</i>
GNR 912	Category A: Part 1	<i>The storage of general waste in lagoons</i>
GNR 912	Category A: Part 12	<i>The construction of a facility for a waste management activity listed in Cat. A of this Schedule</i>
NWA	Section 21(g)	<i>Disposing of waste in a manner which may detrimentally impact on a water resource.</i>

Under Government Notice No R. 982 of 2014, the Applicant, Ama-superco2 (Pty) Ltd, with support from the Department of Economic Development, Tourism and Environmental Affairs (DEDTEA), is required to appoint an independent Environmental Assessment Practitioner (EAP) to conduct the environmental authorisation process. The Applicant has appointed Green Door Environmental to conduct the Basic Assessment process for the abovementioned facility.

In addition to the above, the proposed development constitutes a Water Use in terms of Section 21 of the National Water Act (36 of 1998) and requires a Water Use License Application, which will also be conducted by Green Door Environmental.



## **WHAT IS PROPOSED?**

---

The proposed 50 sow piggery development will include the following infrastructure:

- Three pig houses;
- A storage and ablutions building;
- Two Slurry dams; and
- An access road.

The proposed site for the piggery is located at the following GPS coordinates (Refer to Figure 1 for locality map) and Figure 2 for the proposed layout:

29° 15' 29.2" S  
31° 13' 16.2" E



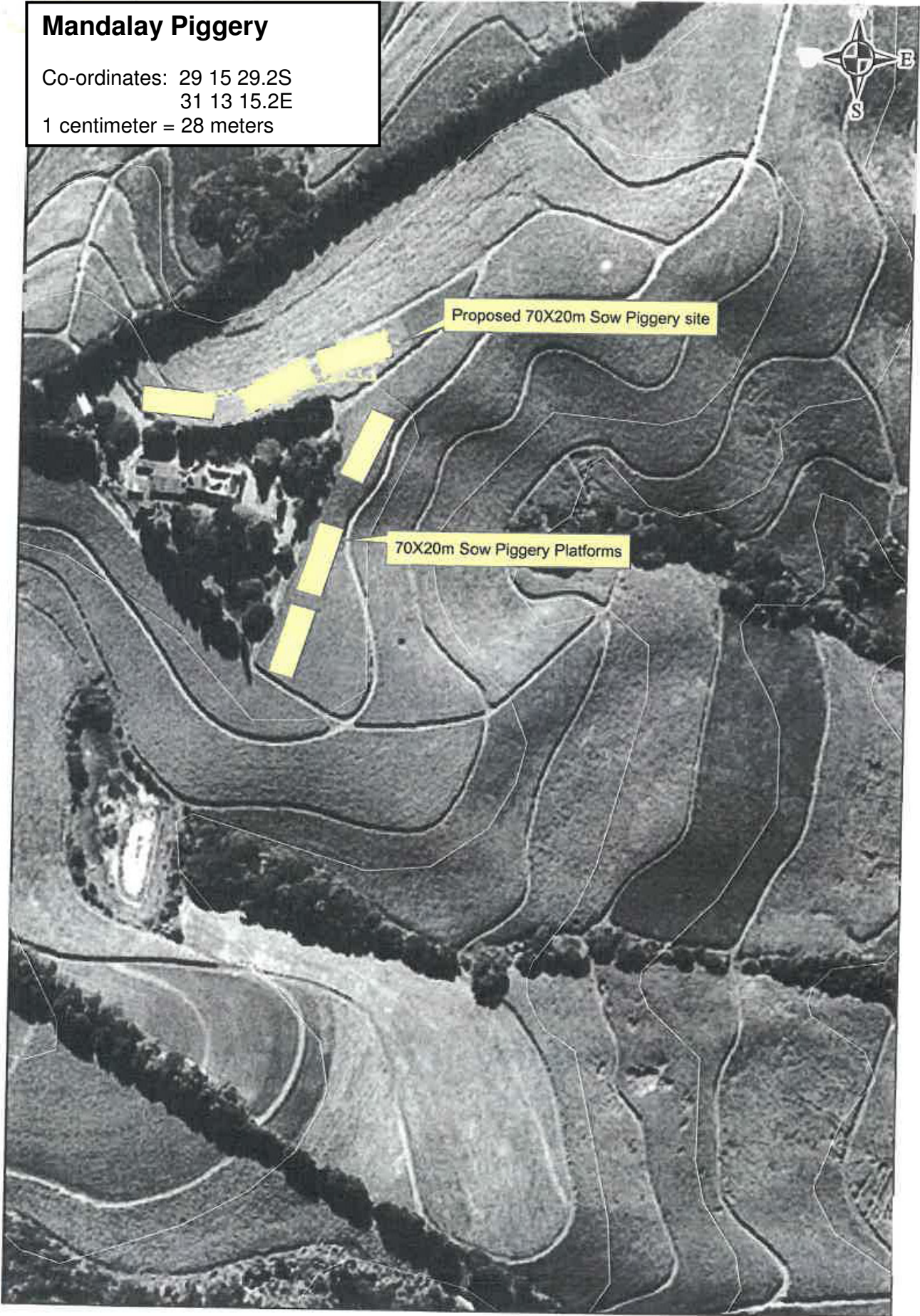
## WHERE IS THE PROPOSED DEVELOPMENT?



**Figure 1:** Aerial map showing the location of the proposed piggery and surrounds (Google Earth).

## Mandalay Piggery

Co-ordinates: 29 15 29.2S  
31 13 15.2E  
1 centimeter = 28 meters



**Figure 2:** Aerial map showing the location of the proposed piggery infrastructure (Google Earth).



## **WHAT IS THE AIM OF AN ENVIRONMENTAL BASIC ASSESSMENT (BA)?**

The Basic Assessment process aims to:

- ◆ Inform and involve all potentially Interested and Affected Parties (I&APs) of the proposed development;
- ◆ Identify the potential impacts (positive and negative) that the proposed development may have on the ecological and socio-economic environment;
- ◆ Provide recommendations based on the identified impacts and conduct further specialist studies if necessary; and
- ◆ Provide the Competent Authority with enough information to make an informed decision regarding the proposed development.



## **WHAT IS INVOLVED IN THE EIA PROCESS FOR BASIC ASSESSMENT?**

The Basic Assessment process can be described as follows:

1. *Integrated Waste License Application Form:*  
An official Application Form is required to be completed and submitted to the Competent Authority. This Form provides information on the waste activities, property, and a description of the activities at the facility and lists the relevant listed activities which are triggered.
2. *Public Participation:*  
The general public and relevant Authorities are notified of the proposed development through newspaper adverts, site notices and direct consultation. Alternative methods will be employed to inform those I&APs who may be illiterate, disabled or otherwise disadvantaged. Should you be aware of anyone who might be interested in this project, but has not been notified, please send the relevant contact details to Green Door Environmental. This Background information Document will be circulated to neighbouring landowners, relevant authorities and any other persons registered as I&APs following the adverts and site notices.
3. *Identification of Impacts and Alternatives*  
Environmental issues, concerns, development constraints and possible development alternatives will be identified using professional judgement, project information, experience of similar projects, a review of available literature, site visits, and consultation with authorities and the public.
4. *Impact Evaluation*  
The significance of environmental issues will be evaluated in terms of their expected extent, intensity, duration and probability of occurrence.
5. *Mitigation and Management Measures*  
Measures to manage and minimise impacts to within acceptable levels, as well as measures to maximise the socio-economic benefits associated with the development, will be identified and recorded in the Basic Assessment Report. An Environmental Management Programme (EMPr) will be compiled to facilitate the implementation of mitigation measures.
6. *Reporting*  
The Basic Assessment Report and Draft EMPr will be made available for review and comment by all I&APs and relevant authorities. A Final Basic Assessment Report and EMPr will be compiled and will include comments received on the circulated Basic Assessment Report.
7. *Authority Decision*  
The Final Basic Assessment Report will be used by the Competent Authority as the basis for the decision on whether the proposed development should be approved or not.



## **WHAT POTENTIAL ENVIRONMENTAL IMPACTS HAVE INITIALLY BEEN IDENTIFIED?**

The following issues have been identified as potentially problematic and will, amongst other issues, be investigated during the EIA Process:

- ◆ Waste / effluent management and disposal;
- ◆ Suitability of soils for construction;
- ◆ Odour and noise; and
- ◆ Proximity to drainage lines.

