

**ENVIRONMENTAL IMPACT ASSESSMENT AND WATER USE LICENCE APPLICATION PROCESSES
FOR THE PROPOSED TEMPORAL PARK HOMES FOR THE SIDINGULWAZI PRIMARY SCHOOL (ERF 15856),
LADYSMITH, KWAZULU-NATAL.
BACKGROUND INFORMATION DOCUMENT AND INVITATION TO PARTICIPATE
27 AUGUST 2020**

1. PURPOSE OF THIS DOCUMENT

The aim of this document is to:

- Provide background information to parties interested in and/or affected by the proposed temporary relocation;
- Provide information of the Environmental Impact Assessment (EIA) and Water Use Licence Application (WULA) Processes to be followed for the proposed temporal park homes for the Sidingulwazi Primary School on Erf 15856 Ladysmith, KwaZulu-Natal (KZN);
- Indicate how you, as an Interested and Affected Party (I&AP), can become involved in the EIA and WULA processes.

2. PROJECT DESCRIPTION

Exigent Engineering Consultants has been appointed by Ilifa Africa Engineers, on behalf of the Development Bank of Southern Africa, to conduct the environmental authorisation and water use licence processes for the proposed placement of temporary facilities of the Sidingulwazi Primary School on a suitable site, to allow for construction works during the upgrade of the existing school.

For the duration of the construction period, the school facilities will be temporarily relocated to an adjacent open area. Temporarily relocated facilities will include the following:

- 12 x Park home Classrooms Units (20 Classrooms)
- 2 x Grade R Classrooms
- 10 x Precast Pit Girls Toilets
- 5 x Precast Pit Boys Toilets
- 1 x Park home Teacher's Ablution (8 x Toilets)
- 1 x Carport to Accommodate 16 Vehicles

The following additional temporary accommodation will be provided:

- 25 x Temporary Portable Toilets
- 4 x Shadeport Awnings (8100 x 5000mm each)
- 6 x Park homes (Double Unit = 12 Classrooms)

- Perimeter Fence, Pedestrian & Vehicle Gates for Temporary School

Upon completion of the upgrade to the school, the temporary facilities will be removed and developed into Sports Fields (1 x Combi Court, 1 x Netball Field & 1 x Large Soccer Field)

3. PROJECT LOCATION

The temporary relocation of the facilities of the Sidingulwazi Primary School is proposed on Erf 15856, within the Alfred Duma Local Municipality within Uthukela District Municipality, KZN. The site is located within quarter degree grid cell 2829DB and quaternary catchment V12G with the centre point geographic coordinates at 28°35'11.81"S and 29°49'59.25"E. It has an approximate extent of 1.4 ha.

4. ENVIRONMENTAL IMPACT ASSESSMENT (EIA) AND WATER USE LICENCE (WULA) PROCESSES - LEGAL FRAMEWORK

In terms of the EIA Regulations published in Government Notice No. R. 982 of 4 December 2014 under Section 24(5), and 44 of the National Environmental Management Act (NEMA), 1998 (Act No. 107 of 1998), as amended, the intent to carry out the EIA Process (in terms of Listing Notice 1 – GN R327) for the listed activities 19 and 27 of GN 327 and a Water Use Authorisation, to be submitted to the Department of Human Settlement, Water and Sanitation (DHSWS) in terms of Section 21 of the National Water Act (NWA), (Act 36 of 1998).

GN R327 - NEMA Environmental Impact Assessment Listing Notice 1 of 2017:

Activity 19: *The infilling or depositing of any material of more than 5 cubic metres into, or the dredging, excavation, removal or moving of soil, sand, shells, shell grit, pebbles or rock of more than 5 cubic metres from*

(i) a watercourse.

Activity 27: *The clearance of an area of 1 hectares or more, but less than 20 hectares of indigenous vegetation*

NWA for the listed activities in Section 21.

The EIA and WULA Processes consists of the following two very closely interlinked processes:

- A technical process, which entails the identification and management of possible environmental issues/concerns; and
- A public participation process, which requires public consultation in order to assist in the identification of possible environmental and/or social issues and/or concerns.

5. ANTICIPATED ENVIRONMENTAL ISSUES

It is anticipated that the following environmental aspect will be significant and will hence be addressed by the project team during the assessment process:

- Impacts on water resources and wetlands; and
- Stormwater management.

Management guidelines will be developed for the above-mentioned issues and incorporated in an Environmental Management Plan.

You are welcome to comment on the above impacts and provide additional anticipated issues and possible impacts that should be assessed.

6. SPECIALISTS

Based on the DEA Environmental Screening tool outcomes the following specialist input would be required for the proposed project:

- Terrestrial Biodiversity Impact Assessment

In terms of GNR 320 for the Procedures for the Assessment and minimum criteria for reporting on identified environmental themes in terms of Sections 24(5)(a) and (h) and 44 of the NEMA, when applying for an Environmental Authorisation as released on the 20 March 2020, when the requirements for the protocols apply, the requirements for Appendix 6 of the Environmental Impact Assessment Regulations are replaced by these requirements. Where a specialist assessment is required and no specific environmental theme protocol has been prescribed, the required level of assessment must be based on the findings of the site sensitivity verification and must comply with Appendix 6 of the EIA Regulations.

The Project Team has further identified potentially significant watercourse and wetland impacts and will include the following specialist assessment in the process:

- Wetland delineation and functionality assessment

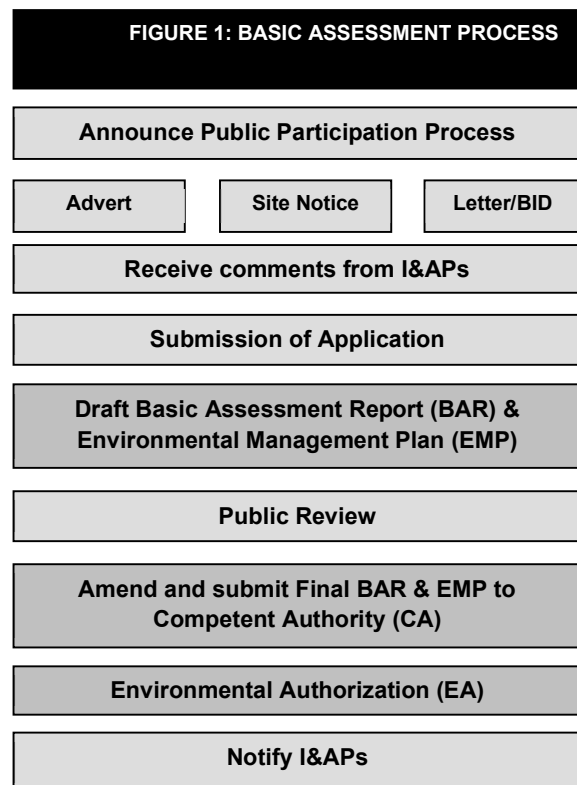
The Department of Economic Development, Tourism and Environmental Affairs (DEDTEA) or other stakeholders may require additional specialists' studies if necessary.

7. PUBLIC PARTICIPATION PROCESS

Public Participation is any process that involves the public in problem solving or decision-making and forms an integral part of the EIA and WULA processes. The Public Participation Process (PPP) provides people who may be affected by the proposed temporary relocation, with an opportunity to provide comments and to raise issues of concern, or to make suggestions that may result in enhanced benefits for the project.

Comments and issues raised during the PPP will be captured, evaluated and included in a Comments and Response Report, which will be incorporated into the Basic Assessment Report (BAR) and the WULA technical document. The draft BAR, draft WULA technical report and draft EMP will be made available for public review prior to submission to the environmental authorities.

The process to be followed is depicted in Figure 1.



8. APPROVING AUTHORITY

The DEDTEA is the relevant authority which will review the BAR while DHSWS will review the WULA. These authorities have to reach a decision as to whether, and under what conditions, the project may proceed, based on environmental considerations. An Environmental Authorisation will be issued based on the information provided in the BAR and a Water Use License will be issued based on the information in the WULA.

The process to be followed is depicted in Figure 1 as per the amended 2014 NEMA regulations.

9. INVITATION TO PARTICIPATE

Exigent Engineering Consultants has been appointed by Ilifa Africa Engineers, on behalf of the Development Bank of Southern Africa, to manage and facilitate the environmental and water use processes and PPP required for the project.

We would like to encourage you to participate in these EIA and WULA processes. Should you wish to get involved, please forward all written comments to us on or before on or before **28 September 2020**:

EXIGENT ENGINEERING CONSULTANTS

Jacquette Adam

PO Box 9514

Richards Bay

3900.

Tel: (035) 788 0398

Fax: (086) 614 7327

E-mail: jacquette@exigent.co.za

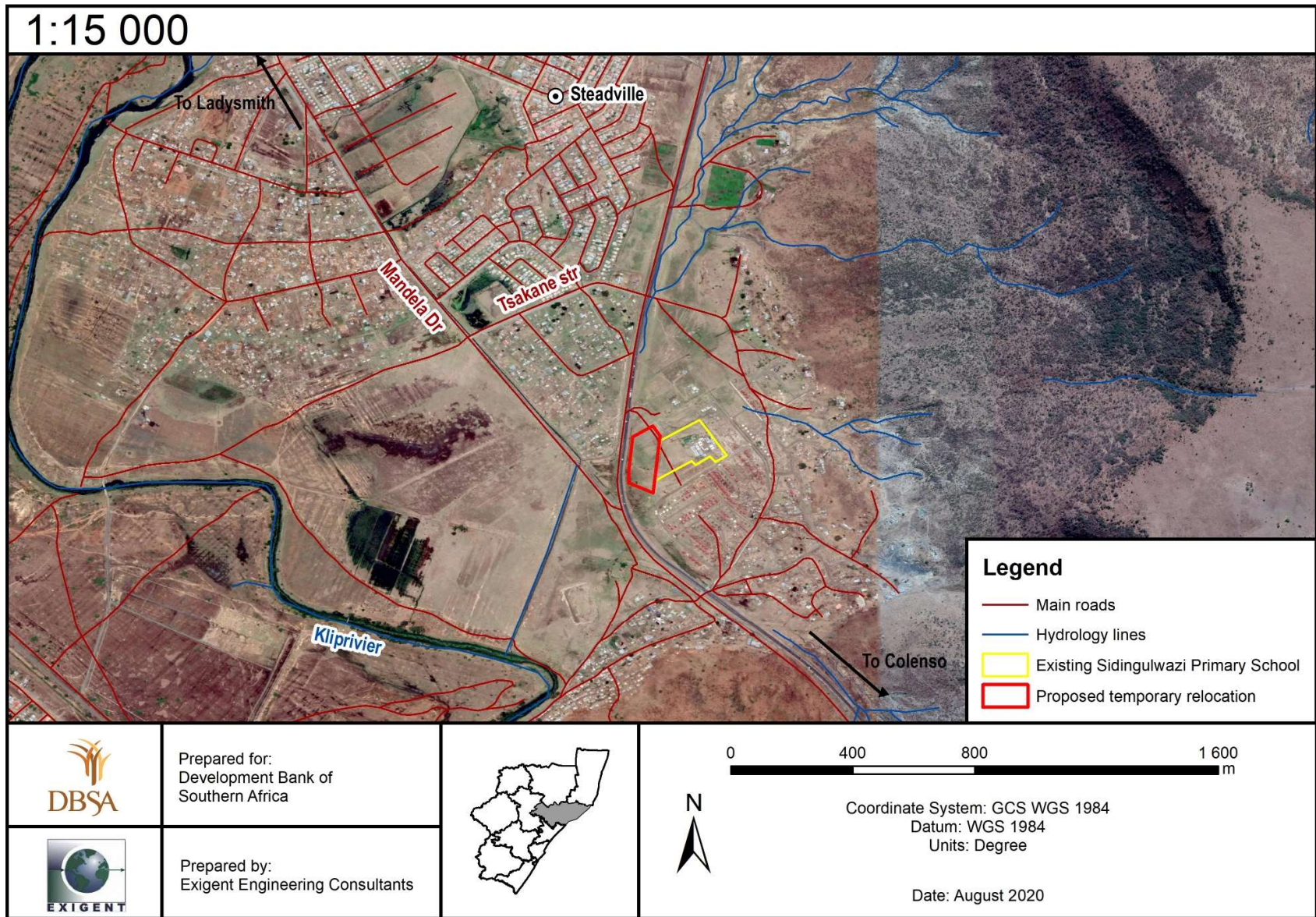


Figure 2. Locality Map