

Background Information Document

**Proposed construction of a
132kV Switching Station,
north west of Lydenburg, Booyensdal area, Thaba Chweu
Municipal area, Mpumalanga Province
DEA Ref: 14/12/16/3/3/1/1211
JULY 2014**

Prepared by:



Reg no. 2003/0890358/23

Postal:

Suite #320, Postnet Library Gardens, Library Gardens P/Bag X 9307, Polokwane, 0700

Physical:

141 Thabo Mbeki Street, Fauna Park, Polokwane

Tel: 015 296 3988 Fax: 015 296 4021

Cell: 084 226 5584

Email: marissa@naledzi.co.za

Prepared for:

Eskom Soc Limited

Eskom Distribution Mpumalanga Operating Unit

R37 Lydenburg/Mashishing Road

Eskom Distribution Sterkspruit TSC

P O Box 1567,

Nelspruit,

1200

Attention: Mr. Josiah Zungu

Email: ZunguJ@eskom.co.za



Background

Eskom Distribution Mpumalanga Operating Unit (Eskom Holding SOC Limited) is proposing to construct a 132kV Switching Station to be known as the 'Booyensdal Switching Station' in the rural area of Booyensdal, north west of Mashishing (former Lydenburg). Naledzi Environmental Consultants CC (NEC) have been appointed as the independent environmental assessment practitioners who will be managing the environmental authorisation process on behalf of the applicant.

The purpose of this Background Information Document (BID) is to inform you as Interested and/or Affected Party (I&AP), of the proposed project and provide you with the opportunity to receive information, comment and raise issues regarding the environmental authorisation process. This can be achieved mainly through:

- ✚ registering as an interested and/or affected party during the public participation process
- ✚ giving comments, raising concerns and/or issues about the proposed project

Need for Project

Due to demand and supply changes in the Booyensdal area, Eskom intends to build the 132kV Switching Station at the Booyensdal 132kV power line T-off from the existing Steenberg-Den Brochen 132kV power line. The Switching Station will assist with continuity of supply to the Booyensdal Mine when faults occur on their network.

Project Overview

The 132kV Booyensdal Switching Station will require a site of 36mx80m covering an area of 2880m². The site will be located underneath existing power lines in existing Eskom servitude. The proposal would include:

- ✚ Build 4 x new 132kV Feeder Bays;
- ✚ Install 132kV isolators with surge arrestors
- ✚ Install a set of feeder current Transformer
- ✚ Install 132kV Breaker
- ✚ Install 132kV Isolators
- ✚ Install a set of Power Voltage Transformers

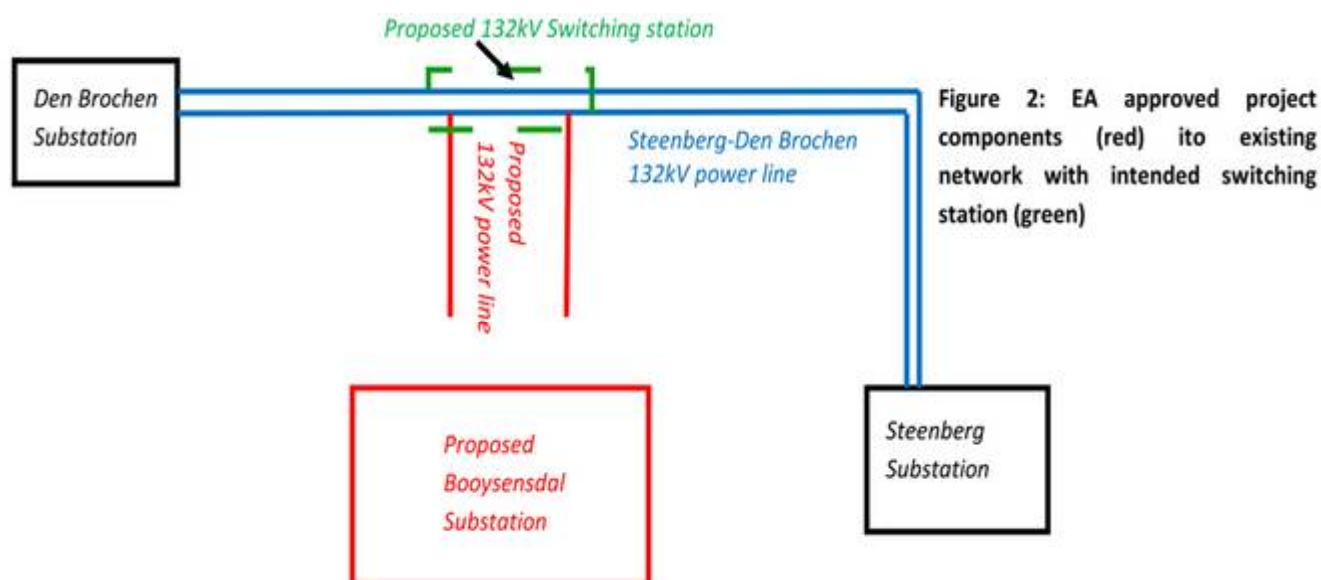
Facility equipment used to tie together two or more electric circuits through switches. The switches are selectively arranged to permit a circuit to be disconnected, or to change the electric connection between the circuits.

Referring to existing power lines; The Steenberg-Den Brochen power line is an existing power line running north south in the Booyensdal area. The Booyensdal 132kV power line is a proposal, for which Eskom, received environmental authorisation during February 2011. It has however not been constructed yet. The power line will run east west towards the Booyensdal Mine into a future substation. Eskom intend to include the switching station in the construction works for the



Booyensdal 132kV power line. The switching station was not part of the initial scope of works for the Booyensdal power line and thus is now being applied for separately.

Refer to Figure 2 indicating the position of the new switching station in the existing distribution network.



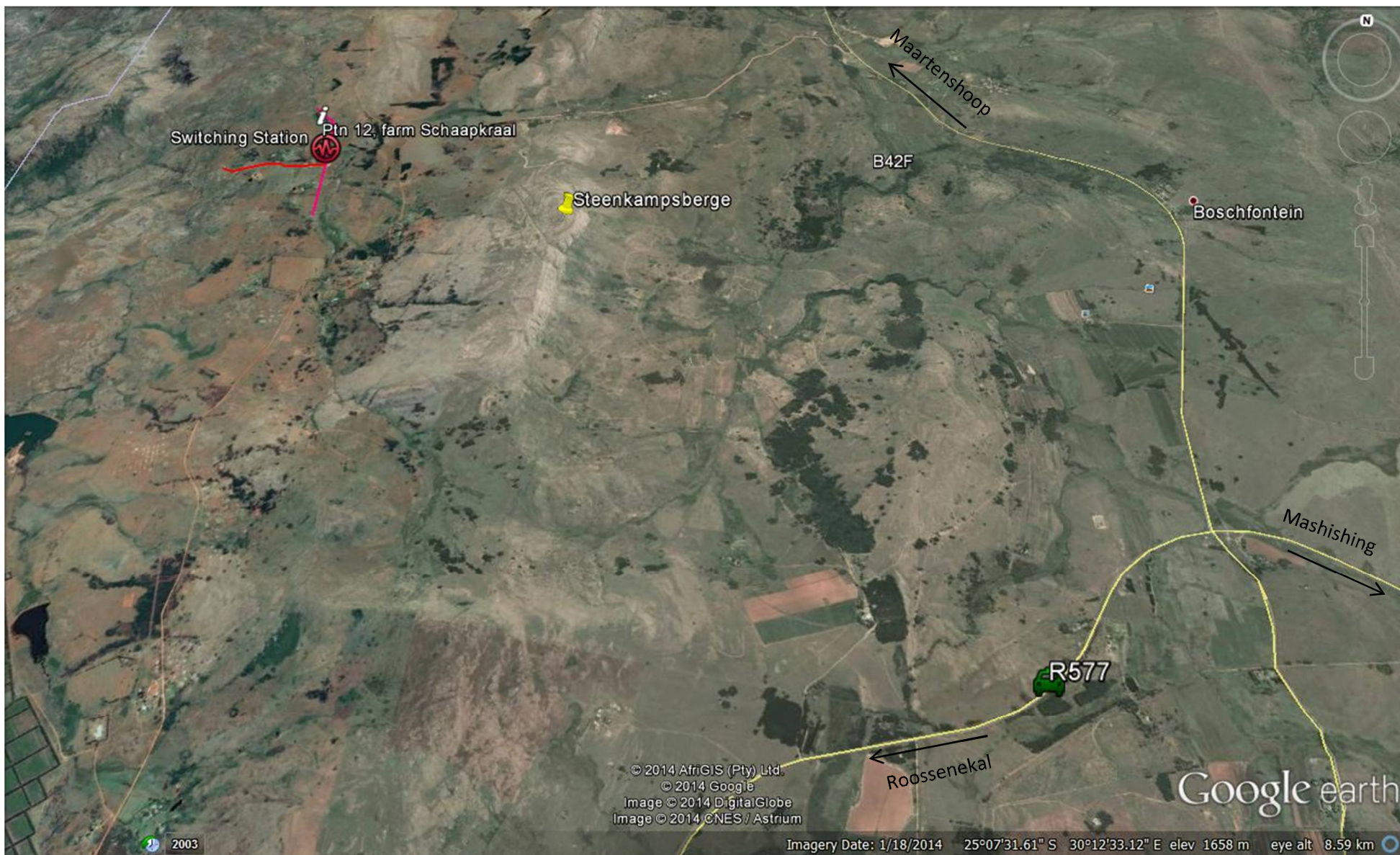
Project Site

The switching station is proposed on the farm Schaapkraal 42JT (Portion 12), north west of Lydenburg (Mashishing) in the rural area of Ward 5 within Thaba Chweu Local Municipality, in the Ehlanzeni District within Mpumalanga Province.

The farm of Schaapkraal 42JT/9 is 305 hectares and the land use is agriculture, however less than 1 hectare will be required for the switching station. Existing land uses would continue on the property and future applications will not be limited by the proposal.

The station is proposed inside “combined” existing eskom servitude referred to as Steenberg-Den Brochen 132kV power line and to be built Booyensdal 132kV power line servitude. Refer to page 4, Figure 3 & 4 for the Aerial Locality Maps.

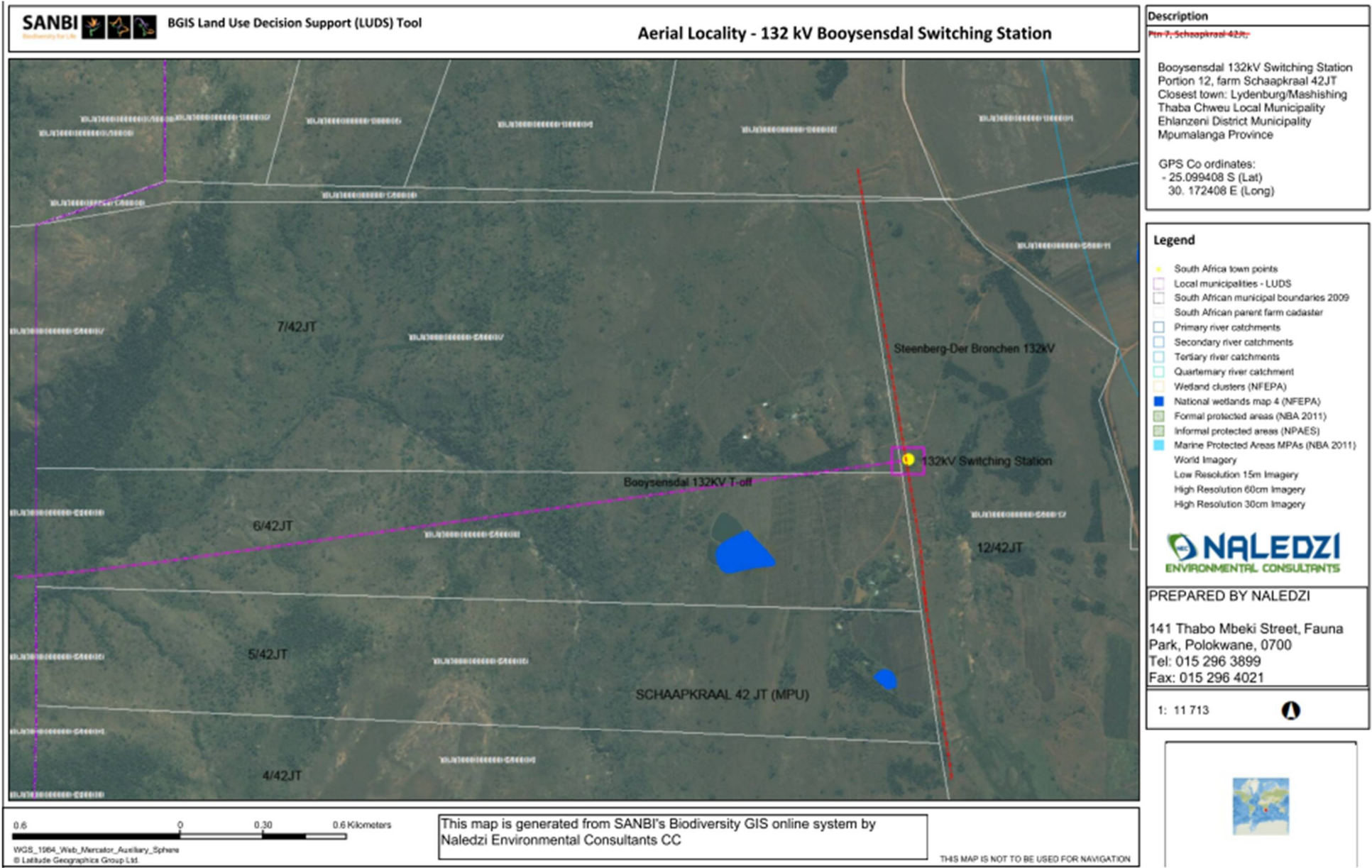




Background Information Document
132kV Booyensdal Switching Station

July 1, 2014



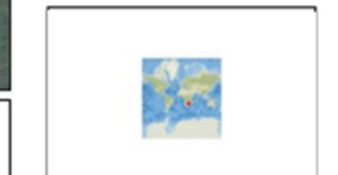


Description
Pin-7-Schaapkraal-42JT
 Booyensdal 132kV Switching Station
 Portion 12, farm Schaapkraal 42JT
 Closest town: Lydenburg/Mashishing
 Thaba Chweu Local Municipality
 Ehlanzeni District Municipality
 Mpumalanga Province
 GPS Co ordinates:
 - 25.099408 S (Lat)
 30. 172408 E (Long)

- Legend**
- South Africa town points
 - Local municipalities - LUDS
 - South African municipal boundaries 2009
 - South African parent farm cadaster
 - Primary river catchments
 - Secondary river catchments
 - Tertiary river catchments
 - Quarternary river catchment
 - Wetland clusters (NFEPA)
 - National wetlands map 4 (NFEPA)
 - Formal protected areas (NBA 2011)
 - Informal protected areas (NPAES)
 - Marine Protected Areas MPAs (NBA 2011)
 - World Imagery
 - Low Resolution 15m Imagery
 - High Resolution 60cm Imagery
 - High Resolution 30cm Imagery
- NALEDZI**
 ENVIRONMENTAL CONSULTANTS

PREPARED BY NALEDZI
 141 Thabo Mbeki Street, Fauna
 Park, Polokwane, 0700
 Tel: 015 296 3899
 Fax: 015 296 4021

1: 11 713



0.6 0 0.30 0.6 Kilometers
 WGS_1984_Web_Mercator_Auxiliary_Sphere
 © Latitude Geographics Group Ltd

This map is generated from SANBI's Biodiversity GIS online system by
 Naledzi Environmental Consultants CC

THIS MAP IS NOT TO BE USED FOR NAVIGATION

Background Information Document
 132kV Booyensdal Switching Station

July 1, 2014



Legislative Requirements

The EIA regulations published in Government Notice (GN) R543 of 18 July 2010 and in terms of Section 24 (5) and 24M and 44 of the National Environmental Management Act, 1998 (Act 107 of 1998), require that certain listed activities in GN R. 544 and R. 546 of 18 June 2010 need environmental authorization which is obtained through a “Basic Assessment” process before the project can be commissioned.

The proposal requires authorisation as it is a listed activity under GN R. 544. The listed activity applicable under GN R. 544 which requires a Basic Assessment, are as follows:

GN R. 544 – Listing Notice 1: Activity 10

The construction of facilities or infrastructure for the transmission or distribution of electricity – a) Outside urban areas or industrial complexes with a capacity of more than 33 kilovolts but less than 275 kilovolts

Competant Authority

The project requires authorisation from the Department of Environmental Affairs (DEA) as the decision-making or ‘competant authority’. The authority will review and reach a decision on the findings of the Basic Assessment Report (BAR).

Basic Assessment Process

The Basic Assessment procedure is described in Regulations 21-25 in the NEMA EIA Regulations of 2010. The procedure is basic and consists of a public participation process and Basic Assessment Report. The steps followed within this procedure are as follows:

1. INFORMATION GATHERING PHASE

The aim is to form an initial assessment of the potential impacts of the proposed development. These potential impacts are identified on the basis of baseline site investigations, desktop analysis and use of tools such as Geographical Information Systems by specialists to assess sites, as well as information gathered from the public and I&AP’s. These potential impacts are then assessed, ranked and recorded in a Draft Basic Assessment Report (DBAR), which is a report compiled with all the findings of the site investigations and assessment of the various impacts posed by the proposed project. The DBAR will be distributed to all I&AP’s and stakeholders for comment for a period of 40 days.

2. PUBLIC PARTICIPATION PHASE

During this phase, consultation with interested and affected parties takes place. This can either be through distribution of background information documents, public meetings, telephonic conversations, faxes and/or e- mails. Important environmental studies are undertaken to investigate the potential impacts identified during the information-gathering phase. Positive, as well as negative, impacts are investigated and these are rated in terms of their expected overall significance.



Recommendations are made through these detailed specialists studies regarding measures that can be put in place to maximise positive impacts and to minimise negative impacts. All results and recommendations from the assessment, including issues and concerns raised during the public participation phase are then compiled into a Draft Basic Assessment Report (DBAR), which is made available for public comment for a period of 40 days. The FBAR is then issued to the competent authority, in this instance DEA, for review and decision-making.

3. DECISION MAKING PHASE

The Competent Authority i.e. DEA will then review the Final Basic Assessment Report (FBAR) and consult with any other key organs of state e.g. the Department of Water Affairs (DWA) before granting or refusing an environmental authorisation. An environmental authorisation may or may not be granted and conditions for both decisions would be given in detail by the Competent Authority. Stakeholders and I&AP's are then informed of the decision.

The Public Participation Process

Public participation is the cornerstone of any Basic Environmental Assessment Process. The key objective of public participation during this BA is to provide stakeholders and I&AP's with sufficient and transparent information on an ongoing basis. The public participation process also allows you the opportunity to comment on the findings of the DBAR that will be made available for public review.

It is important that relevant I&AP's are identified and involved in the public participation process from onset. As communication and consultation is a two-way process, we would like to draw your attention to these two responsibility roles which are as follows:

➤ Your Responsibilities

You, as an I&AP, have a right to participate in this process by informing the consultant of your concerns, raising any issues and comments you might have regarding the potential impacts posed by the proposal on the receiving environment. To exercise this right, you are kindly requested to register as an Interested and Affected Party with Naledzi Environmental Consultants, you could register individually or through an organisation (e.g. tribal chief, farmers' association) who would represent you and speak on your behalf. As an I&AP you also have a responsibility to inform others whom you think may be interested and/or affected by the proposal, and encourage them to register. You can register at any stage of the study, but it is important to register as early as possible.

➤ Our Responsibility

You can contact us by telephone, cell phone, fax, e-mail, registration form or post using the contact details provided at the end of this BID. The following actions will be taken upon receiving any comments/queries/issues:

- ✚ the contact details provided by you will be entered into the project database and you will be sent all further information releases;



- ✚ if you send us queries or comments, we will respond in writing;

If you call us, we will record your details and queries / comments. Should we not be able to answer your question at that moment, we will provide an official response as soon as the information has been made available to us. To ensure effective public participation, the public participation process includes the following steps:

Step 1 – Present project motivation to I&APs and elicit comments

The opportunity to comment on the project will be announced to I&AP's by means of:

- ✚ letters to identified stakeholders;
- ✚ advertisement in local newspapers;
- ✚ placing of on site adverts and
- ✚ making the BID and invitation letters to participate in the Basic Assessment process available at selected public places that are easily accessible to I&AP's.
- ✚ A Focus Group Meeting will be conducted with directly affected landowners ;

The purpose of this meeting will be to brief I&AP(landowners) about the project and the Basic Assessment process. All issues raised, whether telephonically, by e-mail, post or meetings, will be captured in the Comments and Response Report which forms part of the Basic Assessment Report.

Draft Basic Environmental Assessment Report:

A Draft Basic Environmental Assessment Report (DBAR) will be prepared, which will contain:

- ✚ a preliminary description of the proposed project;
- ✚ the potential impacts posed by the project (positive as well as negative);
- ✚ detailed specialist studies assessing the significance of the anticipated impacts on the various proposed alternatives
- ✚ a record of all comments and concerns raised by I&AP's v proposed mitigatory measures to be implemented by the applicant in order to curb the anticipated negative impacts

The DBAR will be made available for public comment for 40 consecutive calendar days. All registered I&AP's will be notified about the availability of the DBAR by letter and advertisements will be placed in local newspapers. After the comment period, a Final Basic Assessment Report (FBAR) will be compiled for submission to the Competent Authority and copies will be made available to stakeholders.

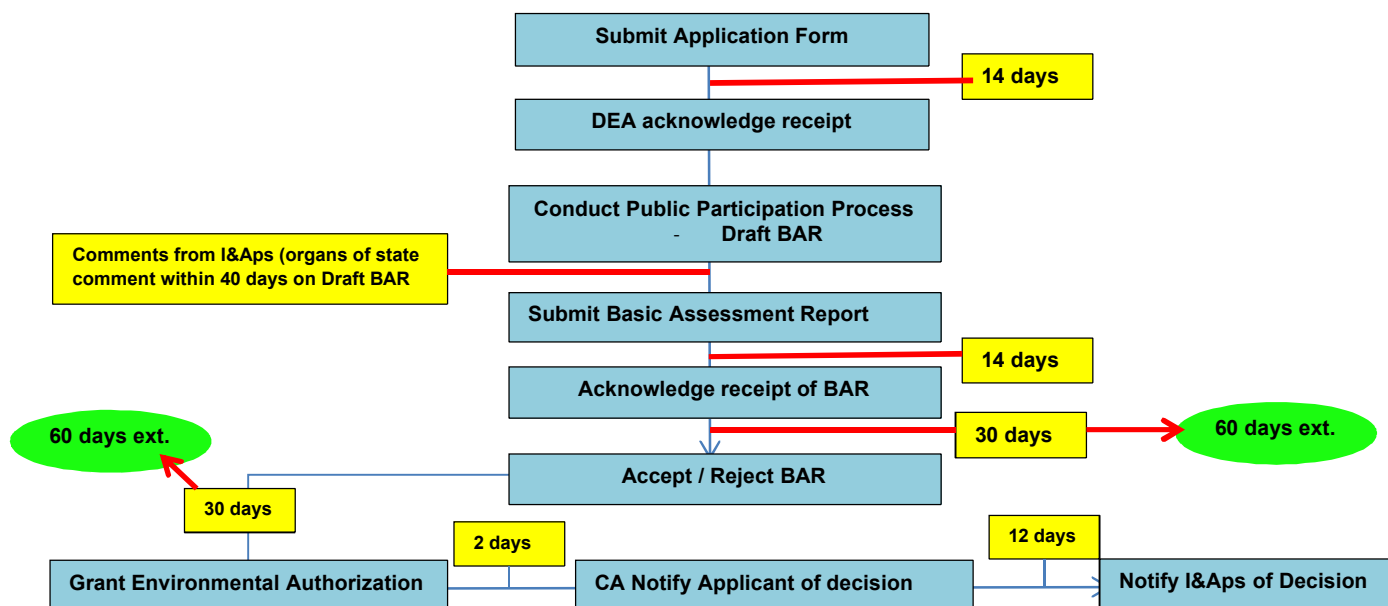
Step 2 - Environmental authorisation

After the various environmental studies of the potential impacts have been completed, and all the relevant competent authorities have reviewed the report, an environmental authorisation or refusal will be issued to the applicant.

Public review of the environmental authorisation: The environmental authorisation will be made available for public review for a period of 20 consecutive calendar days.



Diagrammatic representation of Basic Assessment Process



Please note that the Competent Authority has an automatic extension of 60 days if the 30 day time frame is not met on the acceptance of the Final BAR and grant of Environmental Authorization respectively.

Time Frames applicable to the process

Task	Time frame
Specialist studies/information gathering	July 2014
Focus Group Meeting	July 2014 (to be confirmed)
Publication of Draft BAR and EMPr	August 2014
40 day commenting period on Draft BAR	August – September 2014
Submission of Final BAR to Authorities	October 2014
BAR and EMP accepted	November 2014
Environmental Authorisation granted	January 2015
Notification to I&Aps of decision	January 2015



A REFRESHER AS TO HOW YOU CAN PARTICIPATE

- ✚ By responding (by phone, fax or e-mail) to our invitation for your participation,
- ✚ By returning the attached Registration and Comment Form to the address given below either by fax, e-mail or post **on or before 25 July 2014**;
- ✚ By telephonically contacting us if you have any queries, comment or issues v By reviewing and commenting on the Draft Basic Assessment Report and within the stipulated timeframes.

Environmental Consultants Contact Details:



Naledzi Environmental Consultants CC

Suite #320, Postnet Library Gardens, Library Gardens P/Bag X 9307, Polokwane, 0700

Physical:

141 Thabo Mbeki Street, Fauna Park, Polokwane
Tel: 015 296 3988 Fax: 015 296 4021

Contact person:

Marissa Botha

Cell: 084 226 5584

Email: marissa@naledzi.co.za





132kV Booyensdal Switching Station - Comment and Registration Form

PROPOSED CONSTRUCTION THE OF A 132Kv BOOYENS DAL SWITCHING STATION, NORTH OF WEST OF MASHISHING (FORMER LYDENBURG), THABA CHWEU LOCAL MUNICIPALITY, EHLANZENI DISTRICT WITHIN MPUMALANGA PROVINCE

DEA REF: 14/12/16/3/3/1/1211

Naledzi Environmental Consultants CC

Suite #320, Postnet Library Gardens, Library Gardens, P/Bag X 9307, Polokwane, 0700

141 Thabo Mbeki Street, Fauna Park, Polokwane

Tel: 015 296 3988 Fax: 015 296 4021

Cell: 084 226 5584

Email: marissa@naledzi.co.za

TITLE (Prof/Mr/Mrs)		FIRST NAME	
SURNAME			
CAPACITY (eg. Director/Secretary)			
ORGINASATION			
POSTAL ADDRESS		POSTAL CODE	
TEL NO:		CELL NO:	
FAX NO:		EMAIL ADDRESS:	
COMMENTS/ISSUES / CONCERNS (Please use separate sheet, if required)			

Please add the following of my colleagues/friends/neighbours on your mailing list:

Name:	Organisation:		
Contact details			
Address:			
Tel:	Fax:	Cell:	
Email:			

