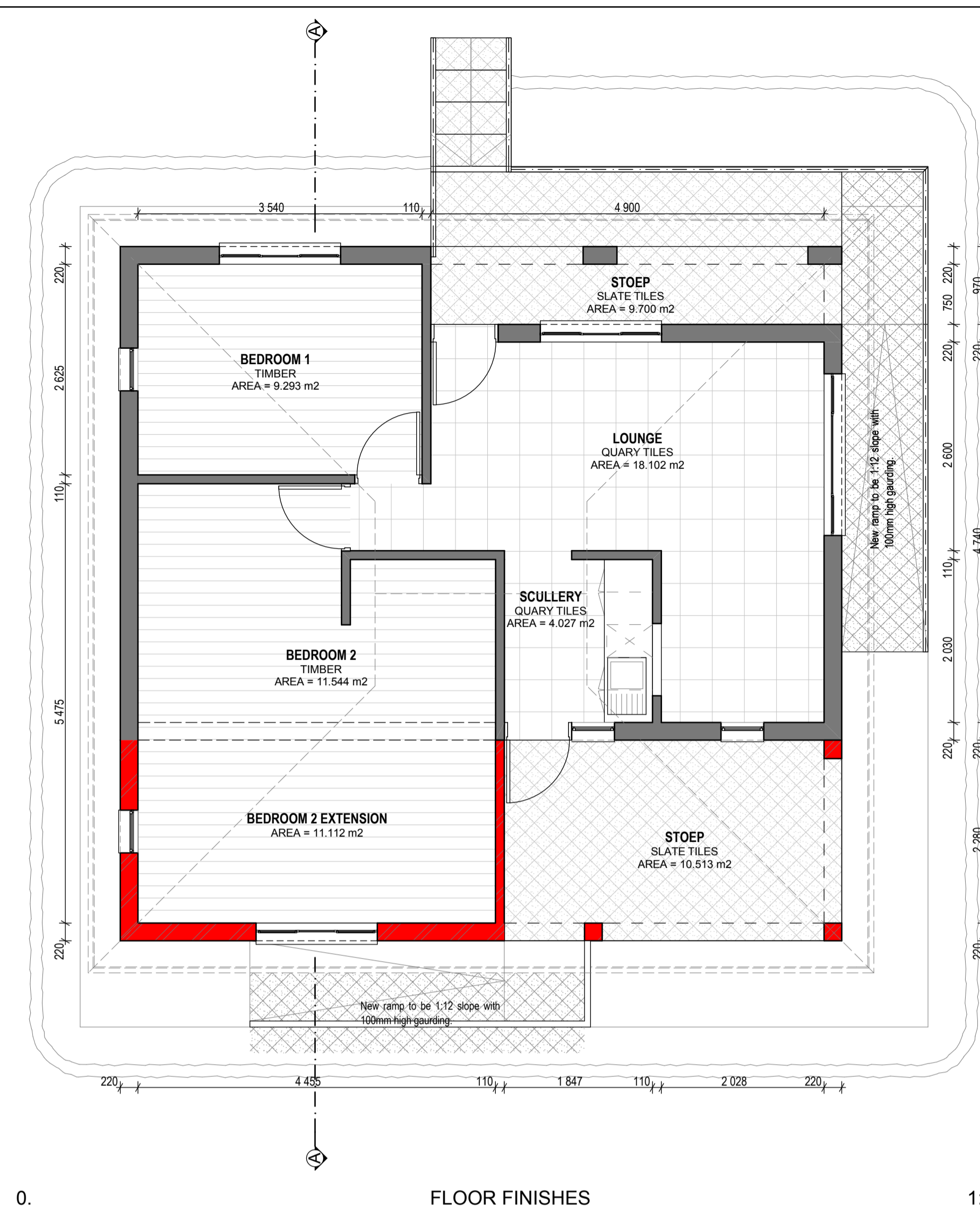


FLOOR PLAN 1:50



FLOOR FINISHES 1:50

HATCH	IMAGE	SPECIFICATION
		Quarry tiles: Rustic Red Quarry tiles, size 300 x 300 x 11mm thick, fixed to wood floated 1:4 cement and sand screed with TAL tile adhesive (elsewhere specified) mixed with Tal bonding liquid in lieu of water on concrete surface bed (elsewhere specified), with 8mm joints continuous in both directions grouted with Tal tile grout (elsewhere specified) with minimum 5mm expansion joints at perimeter, all structural expansion and construction joints and maximum 5m centres internally and at 3m centres externally, in both directions.
		Floorwax Laminated Floor or similar approved: Kährs 12 year guarantee Lineas City Selection Oak White 3 layer constructed veneered wooden flooring with 0.6mm wearing layer in 2-Strip design boards size 1225 x 200 x 7mm thick with prefinished with 6-coat Matt Lacquer, White acrylic finish surface treatment, fixed floating 90° straight with Woodloc® joints and laid on and including 2mm thick foam sound reduction underlay on 250µ PVC damp-proof membrane layer lapped 200mm including 40mm turn-up at walls with movement joints to all vertical perimeters of 1.5mm per meter of floor width with a minimum of 10mm for floors not exceeding 6m wide and centrally at right angles to boards where floor exceeds 18m wide, all in accordance with the manufacturers recommendations.
		Granolithic screed: Screed (minimum 30mm thick) to comprise 1 part cement to 3 parts approved sand by volume - unless otherwise stated to engineers specification. All screeds constructed in accordance with the Cement and Concrete Institution Publication Sand-Cement Floor Screeds.
		Sand-stone Tile: Natural Stone Warehouse Desert Plains quarryface tiles, size 400 x 400 x 11-16mm thick fixed to external floor screed with tile adhesive (elsewhere specified) on concrete surface bed (elsewhere specified) to a minimum 1:50 falls in accordance with SANS 1200 D Degree of Accuracy 1 with 5-10mm joints continuous in both directions and grouted with 2:1 travertine grout and sand mix ratio, excess grout on the surface to be cleaned with water as work proceeds. Clean tiling with Delta Research Clean Stone, use Delta Research Basic Cotto as a primer and as an anti-stain treatment use Delta Research Seal.

NOTES:
ALL SPECIFICATIONS TO BE CHECKED WITH ARCHITECTS.
ALL DISCREPANCIES TO BE REPORTED TO THE ARCHITECT.

PLEASE NOTE:
Roof : Heavy gauge galvanized corrugated iron roof sheeting painted onsite.
Walls: Smooth plaster with PVA paint finish.
Windows: Steel side hung sash windows as shown on the stage two drawings.
Doors: Hardwood on t and g format
Stoop: In situ pigmented floor screeds, preferably patent system with binder.

REVISIONS:

No	Date	Description
1	17/09/2012	- Foundations changes. - Window & Door numbers added.
2	14/11/2012	- Floor finish layout added.
3	15/02/2013	- Roof changed to Dutch-style hipped roof.

Architect : **B. ILORI**
SACAP REG NO : **4849**

Client :

IDC Architects
East London • Port Elizabeth • Cape Town

IDC House
15 Belgrave Road
Belgravia
East London
5201

Tel : 043 743 0522
Fax : 043 743 0534
E-mail : info@idcarch.co.za
 : idcarch@web.co.za

Client : **arts and culture**
Department:
Arts and Culture
REPUBLIC OF SOUTH AFRICA

Implementing Agent:
idt
Independent Development Trust

Project title :
OR TAMBO HOMESTEAD

Building : **AUNT GETTY'S HOUSE**

Dwg title :

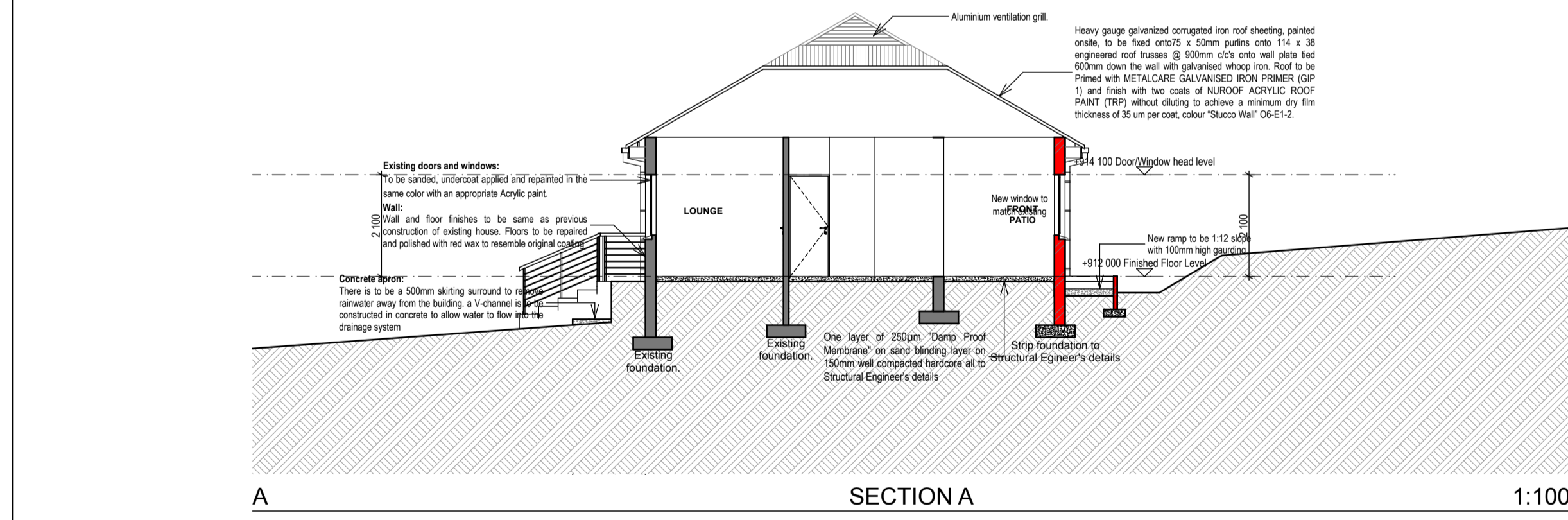
FLOOR PLAN, NORTH ELEVATION, WEST ELEVATION, SOUTH ELEVATION, EAST ELEVATION, FLOOR FINISHES, SECTION A

Dwg purpose : **FOR CONSTRUCTION**

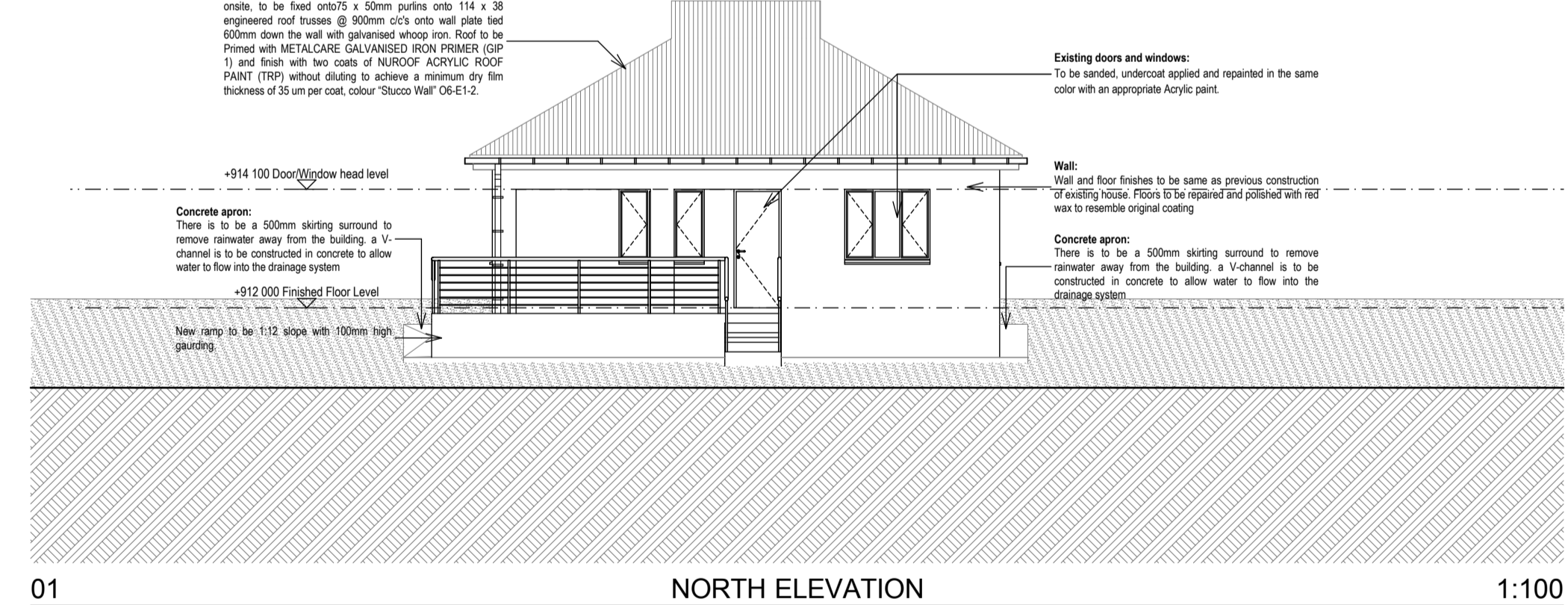
Checked :	Drawn :	Scale :
B. Ilori	L. Mailwa	1:50, 1:100
Rev. no.	Date	Paper size
3	15 February 2013	A1

Project no. **BIZORTH/**

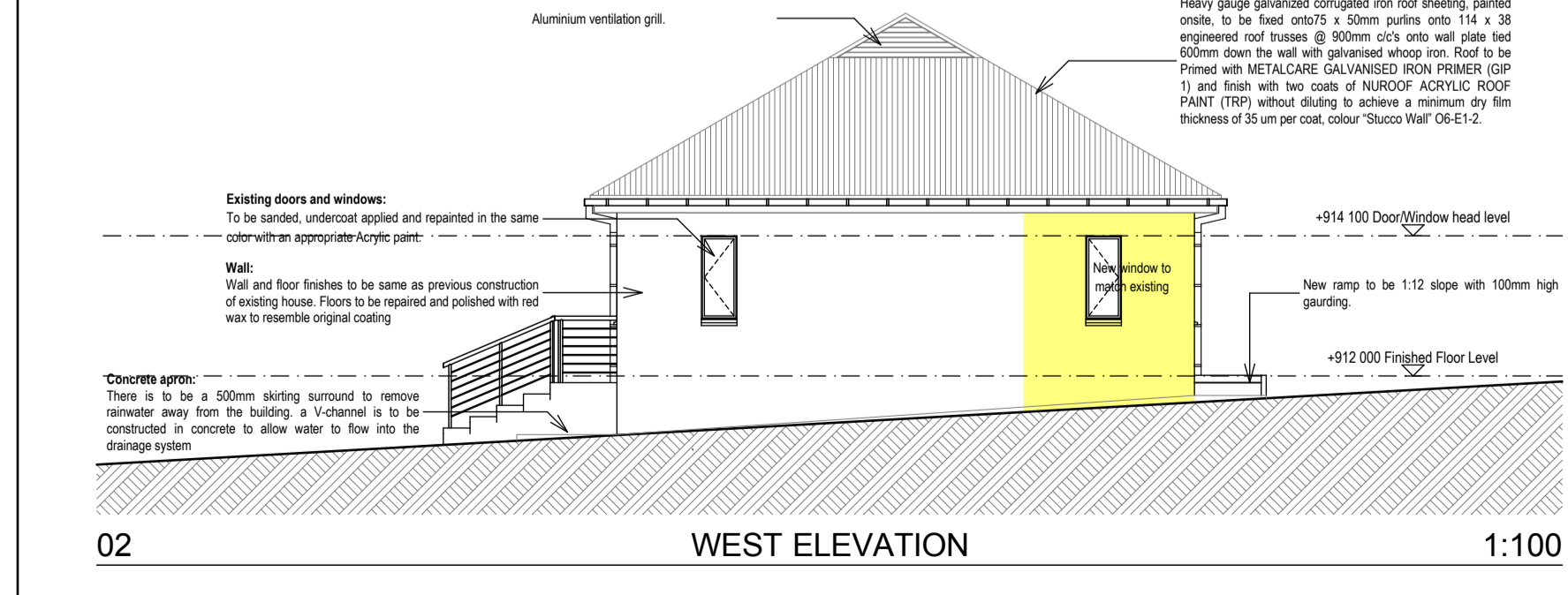
Dwg. no. **BIZORTH/2010-WD**



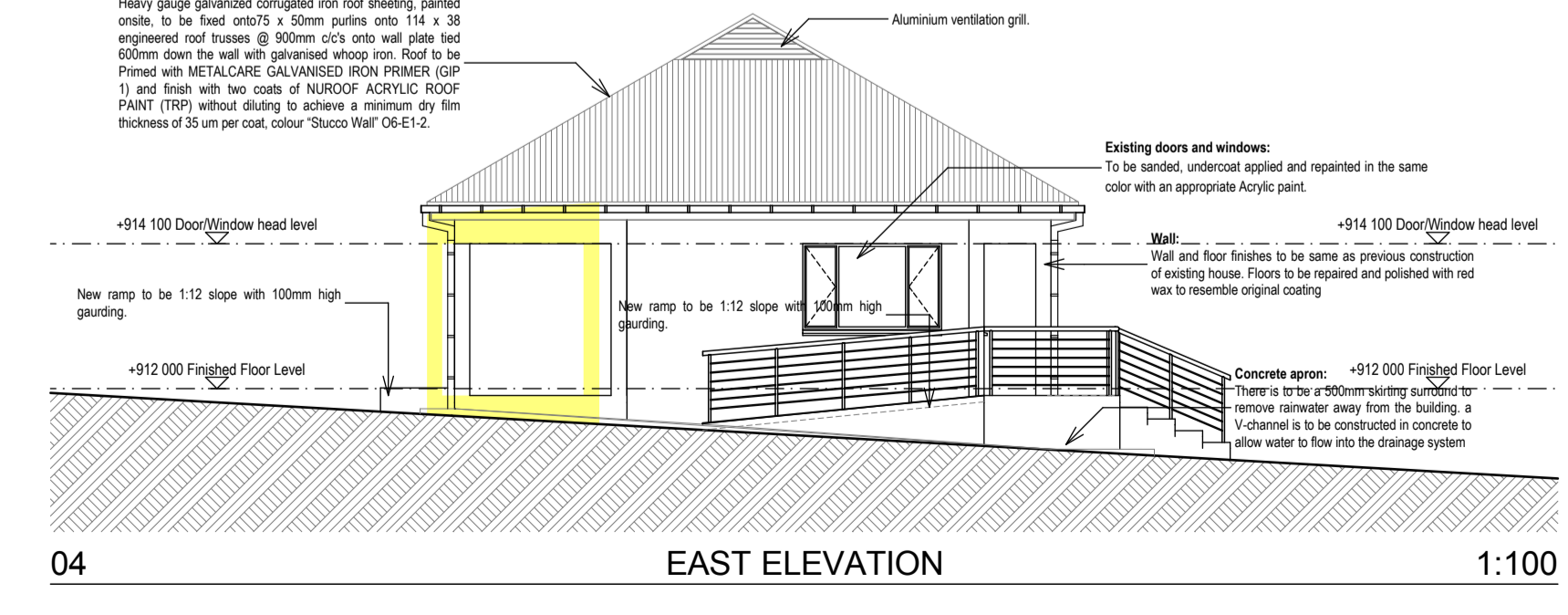
SECTION A 1:100



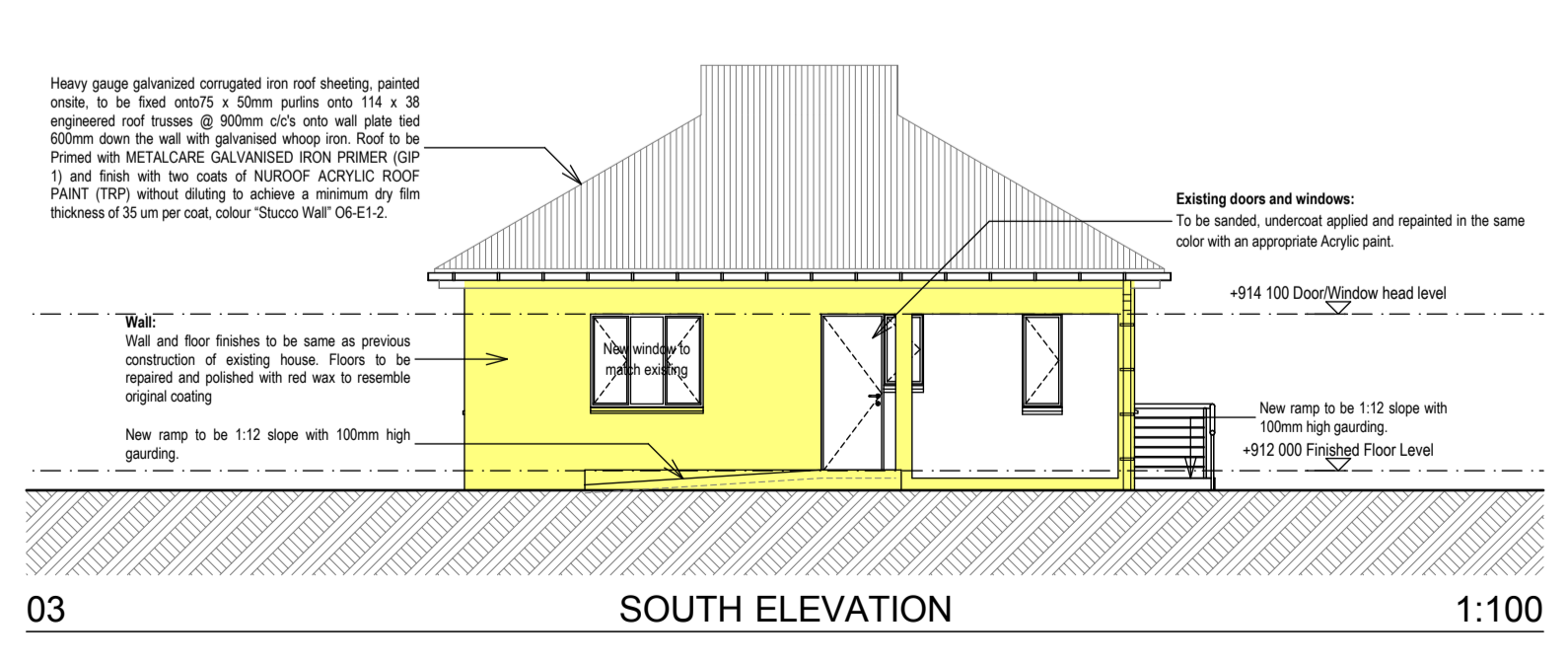
NORTH ELEVATION 1:100



WEST ELEVATION 1:100



EAST ELEVATION 1:100



SOUTH ELEVATION 1:100