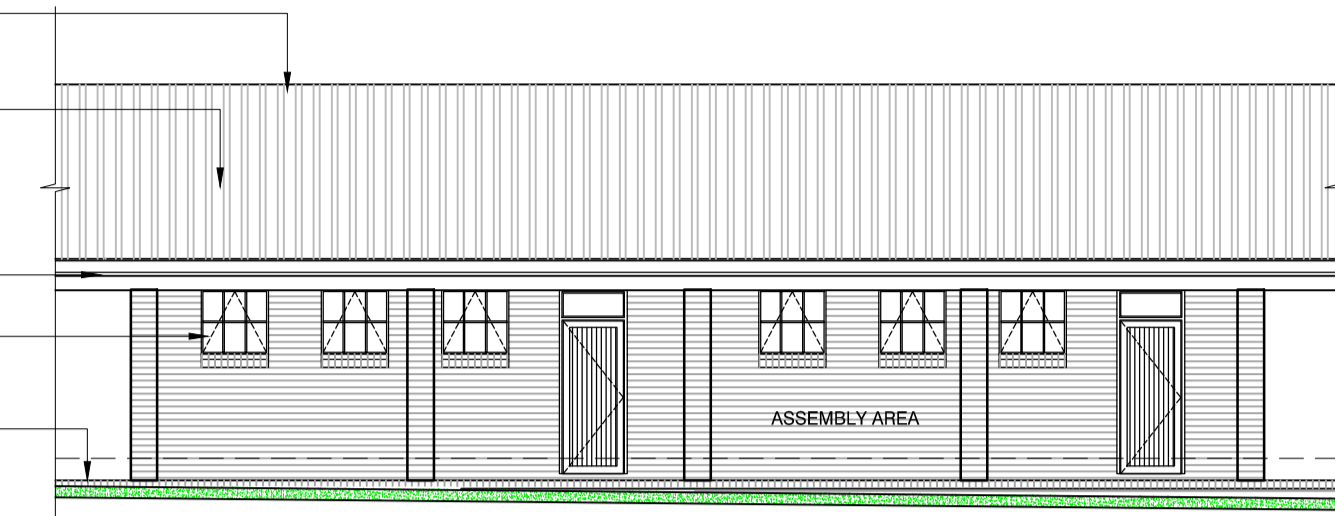
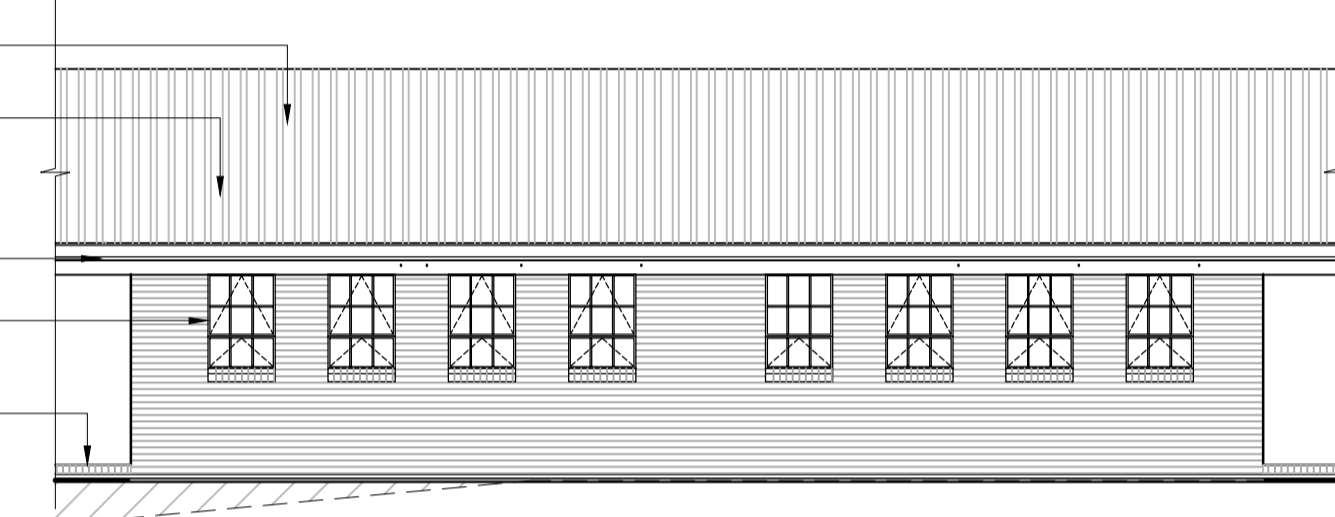


0,6mm COLORPLUS CORRUGATED PROFILE ROOF SHEETING BY SPECIALISTS, COLOUR RAIN CLOUD.
 150 X 150 X 130 SEAMLESS ALUMINIUM BOX GUTTER WITH BRACKETS FIXED TO MANUFACTURERS' SPECIFICATIONS AND CUSTOM-MADE POWDER COATED ALUMINIUM HEADER BOXES TO BE PROVIDED AT ALL VALLEYS AND ENDS OF GUTTERS AS PER MANUFACTURERS' REQUIREMENTS.
 225x12mm PRESSED FIBRE-CEMENT FASCIA WITH ALUMINIUM JOINTERS FIXED TO 12mm MARINE PLYWOOD, FIXED TO RAFTER ENDS WITH ADEQUATE BRASS SCREWS.
 WITH FACEBRICK ON EDGE CILLS & SOLID END BRICKS



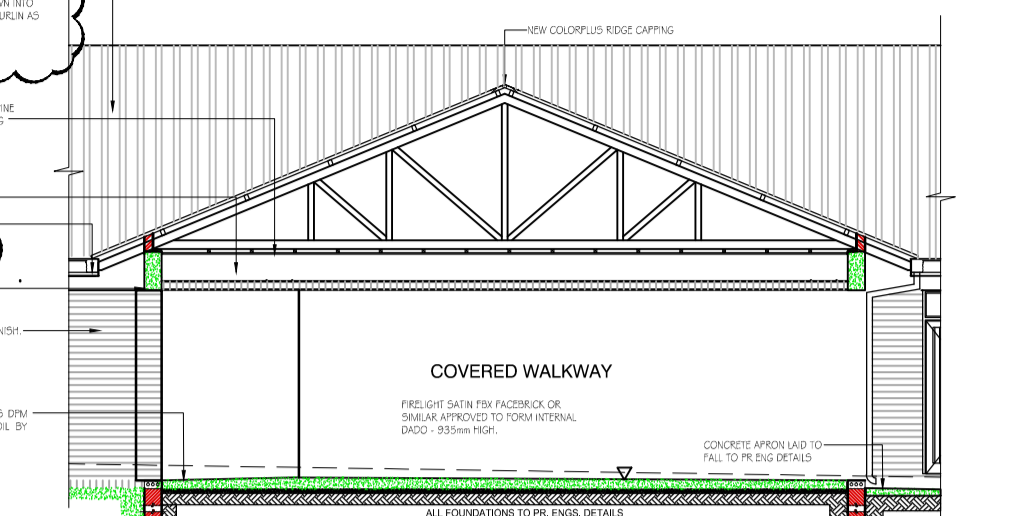
EAST ELEVATION SCALE : 1 : 100

0,6mm COLORPLUS CORRUGATED PROFILE ROOF SHEETING BY SPECIALISTS, COLOUR RAIN CLOUD.
 150 X 150 X 130 SEAMLESS ALUMINIUM BOX GUTTER WITH BRACKETS FIXED TO MANUFACTURERS' SPECIFICATIONS AND CUSTOM-MADE POWDER COATED ALUMINIUM HEADER BOXES TO BE PROVIDED AT ALL VALLEYS AND ENDS OF GUTTERS AS PER MANUFACTURERS' REQUIREMENTS.
 225x12mm PRESSED FIBRE-CEMENT FASCIA WITH ALUMINIUM JOINTERS FIXED TO 12mm MARINE PLYWOOD, FIXED TO RAFTER ENDS WITH ADEQUATE BRASS SCREWS.
 WITH FACEBRICK ON EDGE CILLS & SOLID END BRICKS



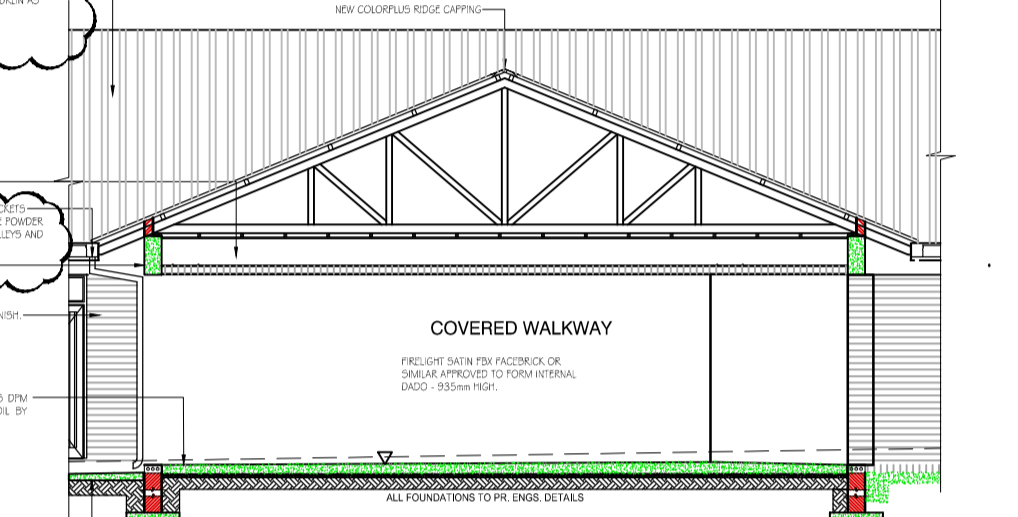
WEST ELEVATION SCALE : 1 : 100

0,6mm COLORPLUS CORRUGATED PROFILE ROOF SHEETING BY SPECIALISTS, COLOUR RAIN CLOUD.
 150 X 150 X 130 SEAMLESS ALUMINIUM BOX GUTTER WITH BRACKETS FIXED TO MANUFACTURERS' SPECIFICATIONS AND CUSTOM-MADE POWDER COATED ALUMINIUM HEADER BOXES TO BE PROVIDED AT ALL VALLEYS AND ENDS OF GUTTERS AS PER MANUFACTURERS' REQUIREMENTS.
 225x12mm PRESSED FIBRE-CEMENT FASCIA WITH ALUMINIUM JOINTERS FIXED TO 12mm MARINE PLYWOOD, FIXED TO RAFTER ENDS WITH ADEQUATE BRASS SCREWS.
 WITH FACEBRICK ON EDGE CILLS & SOLID END BRICKS



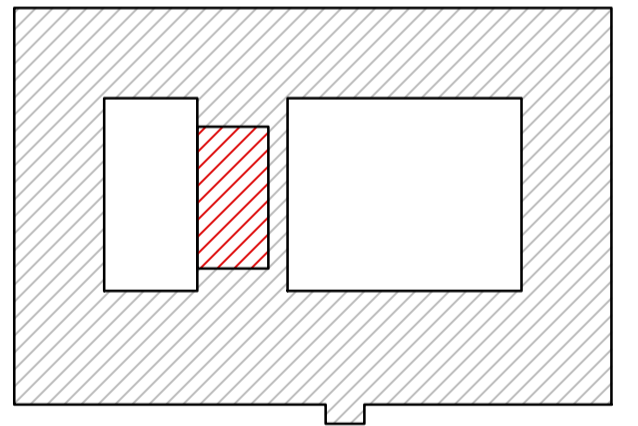
SOUTH ELEVATION SCALE : 1 : 100

0,6mm COLORPLUS CORRUGATED PROFILE ROOF SHEETING BY SPECIALISTS, COLOUR RAIN CLOUD.
 150 X 150 X 130 SEAMLESS ALUMINIUM BOX GUTTER WITH BRACKETS FIXED TO MANUFACTURERS' SPECIFICATIONS AND CUSTOM-MADE POWDER COATED ALUMINIUM HEADER BOXES TO BE PROVIDED AT ALL VALLEYS AND ENDS OF GUTTERS AS PER MANUFACTURERS' REQUIREMENTS.
 225x12mm PRESSED FIBRE-CEMENT FASCIA WITH ALUMINIUM JOINTERS FIXED TO 12mm MARINE PLYWOOD, FIXED TO RAFTER ENDS WITH ADEQUATE BRASS SCREWS.
 WITH FACEBRICK ON EDGE CILLS & SOLID END BRICKS

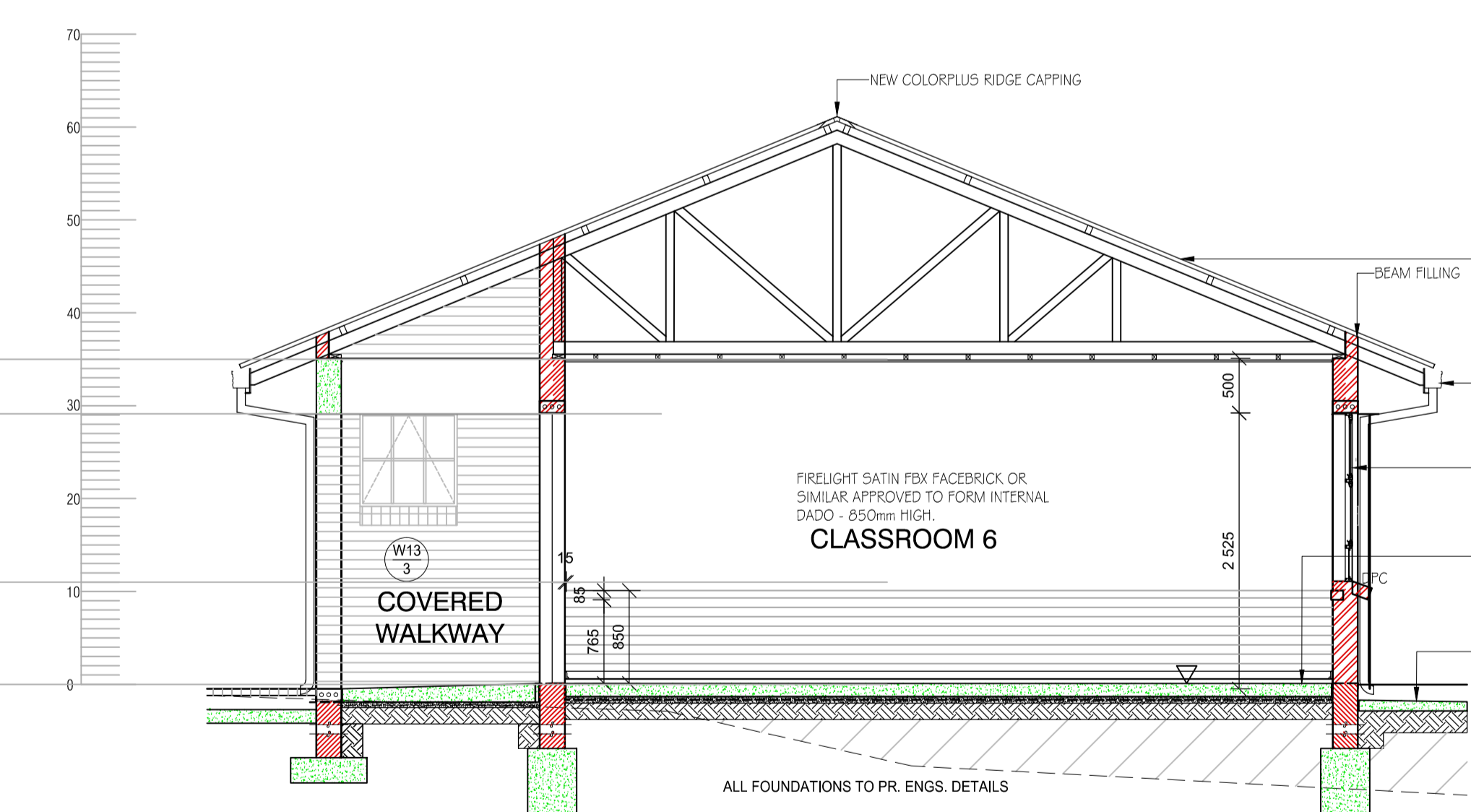


NORTH ELEVATION SCALE : 1 : 100

ROOF: SAFINTRA OR SIMILAR APPROVED A2150, 0,6mm THICK 762mm COVER CLASSICORR CORRUGATED PROFILE RAIN CLOUD COLORPLUS @ ROOF SHEETING, FIXED TO 50 x 76mm TIMBER PURLINS AT MAXIMUM 1200mm CENTRES AND EAVES AND ENDSPAN PURLINS AT 1000mm CENTRES (FINAL SPACING TO BE CALCULATED BY AN ENGINEER USING FIXTITE® SELF TAPPING FASTENERS OR SAFINTRA APPROVED FASTENERS WITH EPDM SEALS ON SABS APPROVED SISIULATION ON GANG-NAILED PRE-FABRICATED ROOF TRUSS SYSTEM TO COMPLY WITH SABS O163 BY SPECIALISTS SPACED AT 1,200mm C.C. INT. SHOP DRAWINGS TO BE PROVIDED FOR APPROVAL PRIOR TO MANUFACTURE ON 38 x 114 WALLPLATES IN LONG LENGTHS, HALF LAPPED & SPIKED AT JOINTS, BEDDED ON CEMENT MORTAR & LEVELED BEFORE TIEING DOWN TO WALLS OR CONCRETE BEAMS WITH DOUBLE STRAND 4mm Ø GALV. ROOF TIES BUILT IN MIN. 5 COURSES DOWN INTO BRICKWORK & TIED AROUND TIE-BEAM FOR NEW WORKS, OR FOR EX. WORKS - HOOP IRON TO BE HELD TO EXISTING BRICKWORK TO PR. ENGS. & ROOF SPECIALISTS DETAILS. RAFTER OR ADDITIONAL PURLIN AS CONVENIENT. PURLINS TO BE FIXED WITH THREE FASTENERS PER SHEET ON INTERMEDIATE PURLINS AND FIVE FASTENERS PER SHEET AT SHEET ENDS, SIDE LAPS TO BE SECURED USING FIXTITE® STITCHING FASTENERS OR SAFINTRA APPROVED FASTENERS AT CENTRES NOT EXCEEDING 500mm AND SEALED WITH BUTYL TAPE WITH MINIMUM 230mm END LAPS SEALED WITH A DOUBLE ROW OF BUTYL TAPE, ALL IN ACCORDANCE WITH THE MANUFACTURERS' RECOMMENDATIONS.
 ROOF PITCH: 22,5°
 COLOUR RAIN CLOUD COLORPLUS SAMPLE TO BE APPROVED BY ARCHITECT



LOCATION PLAN



SECTION R - R SCALE : 1 : 50

No.	DATE	REVISIONS	BY	CHKD	APP
B	30-08-21	RAINWATER GOODS REVISED	NT	JD	

GENERAL NOTES:

- NO CONSTRUCTION WORK SHALL COMMENCE ON SITE PRIOR TO APPROVAL OR SUBMISSION FOR INFORMATION PURPOSES OF ARCHITECTURAL PLANS TO THE LOCAL MUNICIPALITY.
- ALL WORK TO COMPLY WITH SANS 10400
- ALL LEVELS AND DIMENSIONS TO BE CHECKED ON SITE PRIOR TO COMMENCEMENT OF ANY WORK.
- ALL DISCREPANCIES TO BE BROUGHT TO THE IMMEDIATE ATTENTION OF THE AUTHOR.
- ALL PLUMBING BY REGISTERED CONTRACTOR.
- ALL ELECTRICAL BY REGISTERED CONTRACTOR.
- IF ON EXCAVATION IT IS FOUND TO CONTAIN EXPANSIVE CLAY, EXCESSIVE GROUND WATER OR OTHER POOR SOIL CONDITIONS, THEN ALL FOUNDATIONS ARE TO BE BUILT TO PROFESSIONAL ENGINEERS DETAILS AND UNDER HIS SUPERVISION.
- NO VEGETATION TO BE AFFECTED ON SITE UNLESS APPROVAL IS ISSUED BY THE RELEVANT AUTHORITY.
- BOUNDARY BEACONS TO BE EXPOSED AND DEMARCATED.
- GLASS THICKNESS TO COMPLY WITH NING.
- SAFETY GLAZING IN ACCORDANCE WITH NING REQUIRED.
- ONLY FIGURED DIMENSIONS TO BE USED ON ALL DRAWINGS.

vhb ASSOCIATES
ARCHITECTURE & PROJECT MANAGEMENT
 HEAD OFFICE: KWA-ZULU NATAL
 SUITE 1, BISSET HOUSE
 48 BISSET STREET
 PORT SHEPSTONE, 4240
 TEL: 039 032 0003
 MOBILE: 082 554 3427
 BRANCH: EASTERN CAPE
 OFFICE No. 2, FYNN HOUSE
 STREET No. 6
 BIZANA, 4800
 TEL: 039 251 0476
 FAX: 086 577 1713
 P. O. BOX 455, PORT SHEPSTONE, 4240
 e-mail: vhb@vhbassociates.co.za

DESIGNED BY
V. B
 CHECKED BY
V. B
 DRAWN BY
N. T
 CHECKED BY
V. B
 DATE
APRIL 2020

APPROVED BY
N. T
 for CONSULTING ENGINEER
DATE



COEGA DEVELOPMENT CORPORATION
 18 CRANBROOK CRESCENT
 UMLHLANGA
 4051
 TEL: +27 31 584 1760

DRAWING TITLE
ADDITIONS & ALTERATIONS TO EX. SCHOOL FOR COEGA DEVELOPMENT CORPORATION. FOR DEPARTMENT OF EDUCATION BULWER P.S. - EMIS No. 500113664 BULWER, HARRY GWALA DISTRICT THIS SHEET
BLOCK C - DETAIL FLOOR PLAN, SECTIONS & ELEVATIONS: CLASSROOM 5 & 6

SCALE 0m 100m 200m 300m 400m 500m 1km			
CENTROID OF DRAWING X	CONSULTANTS JOB No. CDC 19/01	DRAWING No. BLOCK C 13	REV B
Y		CDC DRAWING No. CDC / 116 / 19	