

28°30'0"E

28°33'36"E

28°37'12"E

28°40'48"E

28°44'24"E

23°49'12"S

23°49'12"S

23°52'48"S

23°52'48"S

23°56'24"S

23°56'24"S

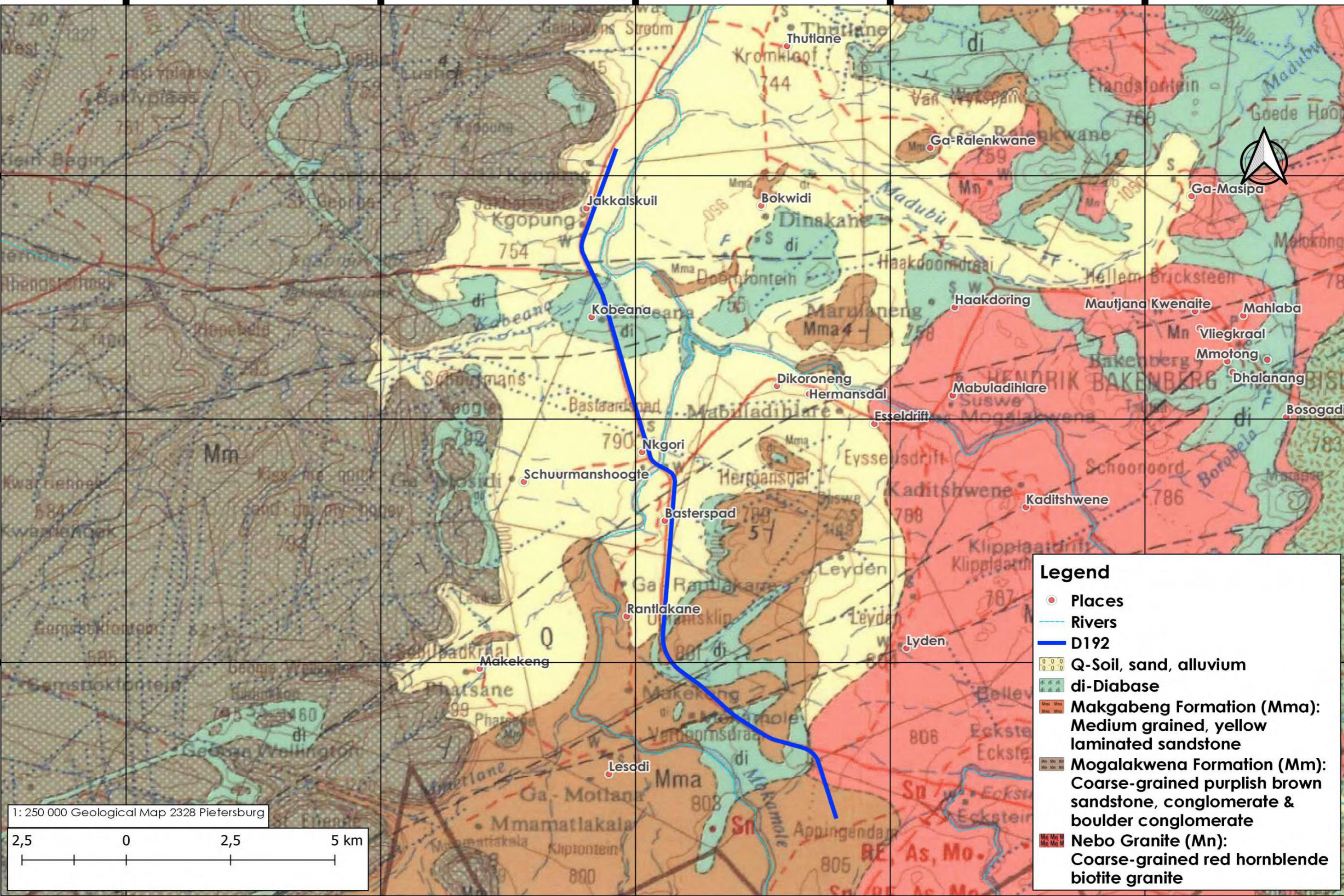
28°30'0"E

28°33'36"E

28°37'12"E

28°40'48"E

28°44'24"E



Legend

- Places
- Rivers
- D192
- Q-Soil, sand, alluvium
- di-Diabase
- Makgabeng Formation (Mma):
Medium grained, yellow laminated sandstone
- Mogalakwena Formation (Mm):
Coarse-grained purplish brown sandstone, conglomerate & boulder conglomerate
- Nebo Granite (Mn):
Coarse-grained red hornblende biotite granite

1: 250 000 Geological Map 2328 Pietersburg

