

---

## BACKGROUND INFORMATION DOCUMENT

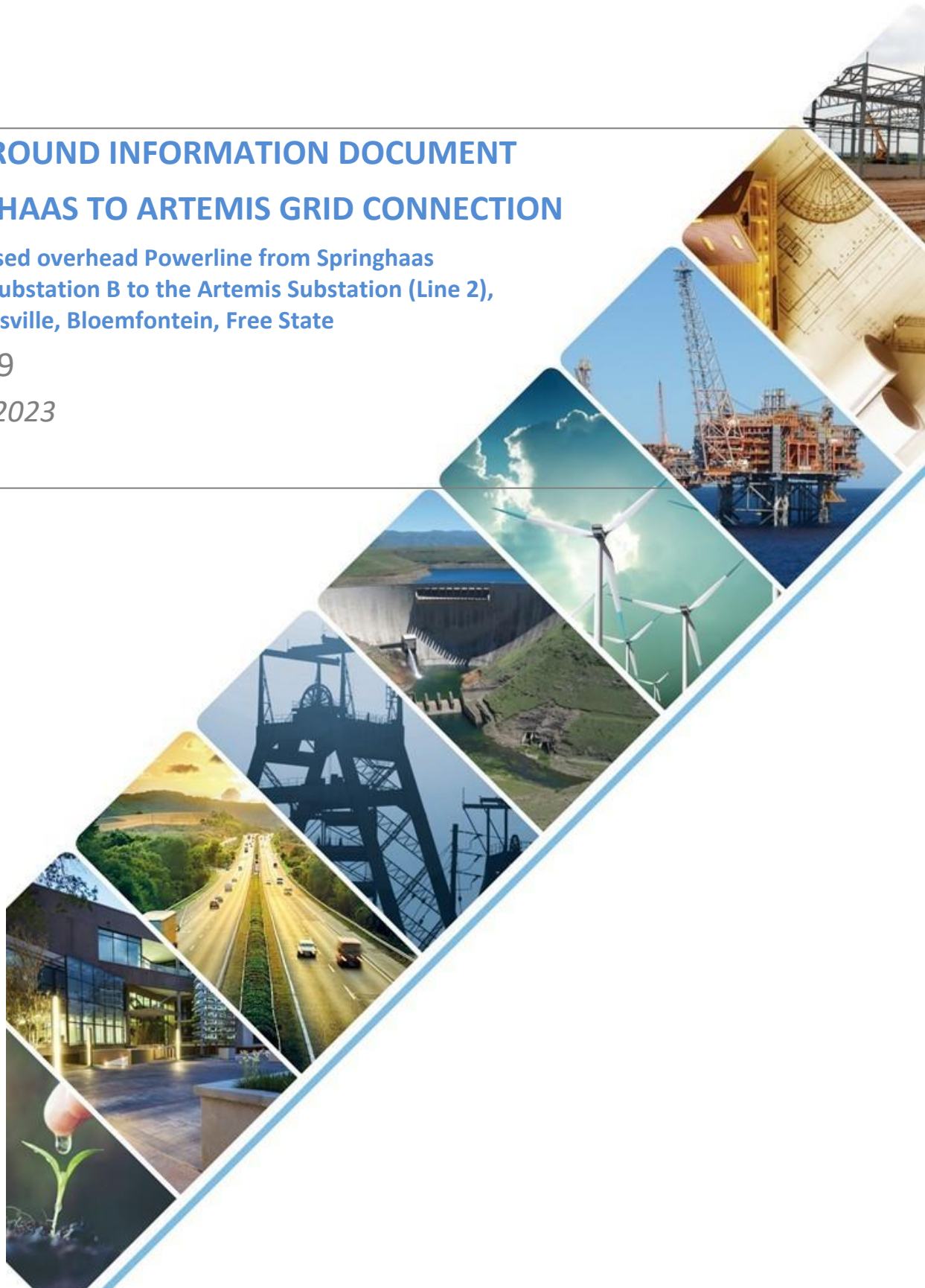
### SPRINGHAAS TO ARTEMIS GRID CONNECTION

The proposed overhead Powerline from Springhaas Collector Substation B to the Artemis Substation (Line 2), near Dealesville, Bloemfontein, Free State

GE39159

*January 2023*

---



## Abbreviations / Acronyms / Definitions

List of Abbreviations and Acronyms	
BID	Background Information Document
DFFE	Department of Forestry, Fisheries and the Environment
EAP	Environmental Assessment Practitioner
EMPr	Environmental Management Programme
GA	General Authorisation
GN	Government Notice
I&APs	Interested and Affected Parties
kV	Kilovolt
kWh	Kilowatt Hour
NEMA	National Environmental Management Act, 1998 (Act No. 107 of 1998)
OHL	Overhead Line
REDZ	Renewable Energy Development Zone

## 1 Introduction

ABO Wind energy renewables (Pty) Ltd, the proponent, intends to register the proposed Grid Connection Corridor and associated powerlines therein from the Springhaas Solar PV Cluster to the Artemis Substation, near Dealesville, Bloemfontein, Free State Province. The Corridor is wholly located in the Kimberley renewable energy development zone (REDZ) and the Central Strategic Transmission Corridor. Therefore, the registration process for the Corridor is being undertaken in terms of the National Environmental Management Act, 1998 (Act No. 107 of 1998) the *Standard for the Development and Expansion of Power Lines and Substation within Identified Geographical Areas Revision 2* (the Standard).

The Corridor is required to allow the solar power generated by the Springhaas Solar PV facilities to be evacuated to the national grid. In order for the Springhaas Solar PV facilities to evacuate the generated solar power to the national grid, a connection must be established between the solar PV facilities and the Artemis substation.

A team of specialists has been appointed to assess the proposed corridor. The corridor is confirmed to be of low or medium environmental sensitivity in terms the themes identified in the National Screening Tool. The corridor is up to approximately 25.5km in length and up to 410m in width at its widest point (noting that the final corridor registered will be kept within the limits of the Standard). It is within this corridor, that up to two overhead powerlines are proposed (and assessed) for registration in terms of the Standard.

Two powerlines are being registered within the identified corridor:

- Line 1: An overhead powerline up to 275kV in capacity from Springhaas Collector Substation A to the Artemis Substation (Line 1)
- **Line 2: An overhead powerline up to 275kV in capacity from Springhaas Collector Substation B to the Artemis Substation (Line 2) (covered by this background information document)**

---

GIBB Environmental (Pty) Ltd (GIBB) has been appointed as the independent Environmental Assessment Practitioner (EAP) by the proponent (ABO Wind energy renewables (Pty) Ltd) to undertake the required registration of the proposed overhead powerline, up to 275kV in capacity from Springhaas Collector Substation B to the proposed Artemis Substation, near Dealesville, Bloemfontein, Free State Province (Line 2). The registration process for Line 2 is being undertaken in terms of the National Environmental Management Act, 1998 (Act No. 107 of 1998) the *Standard for the Development and Expansion of Power Lines and Substation within Identified Geographical Areas Revision 2* (the Standard).

## 1.1 Purpose of this Background Information Document

This BID (background information document) will be distributed electronically to all stakeholders identified as potential Interested and Affected Parties (I&AP). The BID will be used to announce the project and provide a high-level overview of the project to stakeholders. The BID is intended to provide stakeholders with sufficient project information for them to decide if they consider themselves to be an Interested and Affected Party (I&AP) for the project. Stakeholders are required to register with the EAP (GIBB Environmental) at which point they will be added to the I&AP register (refer to **Section 2.3** for details of how to register).

## 1.2 Legal Context

Line 2 will be located in the Central Strategic Transmission Corridor as gazetted in Government Notice No. 113. The Strategic Transmission Corridors have already been subject to a Strategic Environmental Assessment which identified areas suitable for the development of grid connection infrastructure.

Due to its location within a Strategic Transmission Corridor an application for environmental authorisation is not required for the proposed Line 2 from the Springhaas Collector Substation B to the Artemis Substation. The Proponent is however required to register the facility with the Department of Forestry, Fisheries and the Environment (DFFE) in-line with the requirements of the *Standard for the Development and Expansion of Power Lines and Substation within Identified Geographical Areas (the Standards)*.

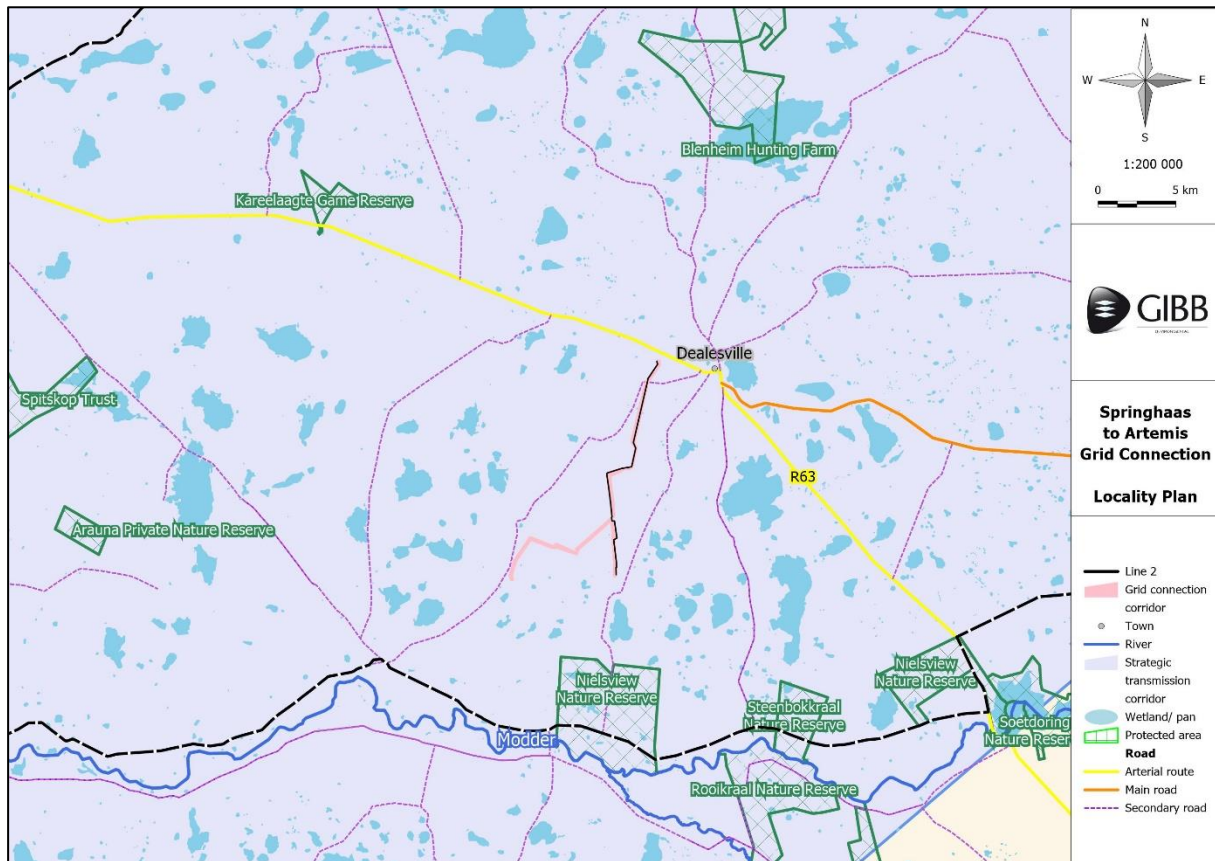


Figure 1: Line 2 locality map

### 1.2.1 Relevance of the Standards

Prior to the gazetting of the *Standard for the Development and Expansion of Power Lines and Substation within Identified Geographical Areas* the development of Line 2 would have triggered the need to undertake an application for environmental authorisation in the format of a basic assessment report. With the publishing of the new “standard” in July 2022, an application for environmental authorisation is no longer required. The project details of Line 2 were reviewed (see Table 1) to ensure it is eligible for a registration process in terms of the Standard.

Table 1: Criteria for a registration process

No.	Requirement	Comment
1.	The site must be located in areas identified by the national web based environmental screening tool as being of medium or low environmental sensitivity and confirmed to be such for identified environmental themes.	All of the environmental sensitivity themes are rated as low to medium sensitivity by the environmental screening tool with the exception of palaeontology (high), animal species theme (high), agricultural theme (high) and terrestrial biodiversity (very high). Specialist site sensitivity verifications have been undertaken for all identified environmental themes and all themes were confirmed to be of low or medium sensitivity in the identified grid corridor. Details will be provided in the Environmental Sensitivity Report.
2	The site must be located within a strategic transmission corridor, for the development or	Line 2 is located in the Central Strategic Transmission Corridor.

No.	Requirement	Comment
	expansion of electricity transmission and distribution power line infrastructure and substations	
3	The development triggers Listing Notice 1 activity 11, activity 47 or Listing Notice 2, activity 9.	Depending on the final technical design Collector substation A will either trigger: <ul style="list-style-type: none"> <li>• Listing Notice 1, Activity 11 (i); or</li> <li>• Listing Notice 2, Activity 9</li> </ul> More information will be provided in the Environmental Sensitivity Report.

### 1.3 Process and Timeline

The process of registering Line 2 follows 15 steps, detailed in Table 2 below.

**Table 2: Registration process steps**

No.	Requirement	Comment
1	Proponent to identify a preliminary corridor and substation sites using the national web based environmental screening tool (screening tool) and additional relevant spatial datasets, where available	The Proponent has identified a route and corridor and for Line 2. Refer to <b>Appendix A</b> .
2	An independent environmental assessment practitioner (EAP) must be appointed to assist to identify a preliminary corridor, a proposed route, and substation sites.	The Proponent (ABO Wind energy renewables (Pty) Ltd) has appointed GIBB Environmental as the EAP.
3	The EAP, as a minimum, must follow the public participation process required in Chapter 6 of the EIA Regulations, excluding the requirements not relevant to the standard (as described in Chapter 2 of the standard)	The following public participation process will be undertaken: <ul style="list-style-type: none"> <li>• Notification of stakeholders/ potential I&amp;APs of the project</li> <li>• Placing a newspaper advert in one local newspaper</li> <li>• Placement of the BID and I&amp;AP registration forms on a publicly accessible website</li> <li>• Maintaining a register of registered I&amp;APs</li> <li>• Availing the Environmental Sensitivity Report to stakeholders for a 30 day comment period</li> <li>• Notifying registered I&amp;APs of the availability of the final environmental sensitivity report</li> <li>• Informing I&amp;APs within 14 days of a registration number being received and informing them of the opportunity to appeal</li> </ul>
4	The EAP must appoint a specialist team to undertake a site verification and a walkthrough of specific areas; and prepare a preliminary database of possible stakeholders and interested and affected parties (I&APs) along the proposed route and near the substation sites	A specialist team has been appointed and site investigations are complete. A database of possible stakeholders and I&APs has been compiled.
5	The EAP must announce the proposed development or expansion by making available a background information document (BID) on a publicly accessible website and distributing it to identified stakeholders and I&APs identified on the database	This document is the BID for the proposed Artemis Grid Connection (Line 2). The BID will be made available on GIBB Environmental's website.
6	The EAP and specialists must identify a proposed route within the preliminary corridor. The initial servitude negotiations must be undertaken in	The route for Line 2 has been identified and approved by the landowners. The site has been assessed by the specialist team.



No.	Requirement	Comment
	conjunction to ensure that the route is not fatally flawed in terms of servitude access.	
7	The EAP must compile an environmental sensitivity report, with specialist input, to document the process to identify the proposed route and the outcome of the initial servitude negotiations	The compilation of the Environmental Sensitivity Report is underway with input from the specialist team.
8	Release the environmental sensitivity report to stakeholders for a 30-day comment period	Pending. The Environmental Sensitivity Report will be made available on GIBB Environmental's website.
9	The proposed route must be finalised based on comments received during the public participation process and refining the route, where relevant. The proposed route is then referred to as the final pre-negotiated route.	Pending. The Environmental Sensitivity Report will be updated based on comments received during the public participation process.
10	A final environmental sensitivity report must be prepared, which maps the final pre-negotiated route including any mitigation devices, a record of comments and responses, Part C of the Generic EMPr (where applicable), and final confirming statements from the specialists	Pending. The Final Environmental Sensitivity report, part C of the generic EMP and confirming statements from specialists will be prepared. These documents will be made available on GIBB Environmental's website.
11	Notify registered I&APs of the availability of the final environmental sensitivity report for information	Pending. Registered I&APs will be notified of the availability of the Final Environmental Sensitivity report.
12	The proponent must submit the relevant registration form contained in the standard. It must include relevant supporting documents as specified in Chapter 2 of the standard.	Pending. The registration form will be submitted to DFFE with the relevant supporting documentation.
13	The competent authority must, within 30 days of receipt of the information submitted, issue a registration number or, indicate to the proponent that the submission is incomplete and identify the outstanding information	Pending.
14	Within 14 days of receipt of a registration number, all registered I&APs must be informed of the registration and the opportunity to appeal	Pending. GIBB Environmental will notify I&APs of the registration number and opportunity to appeal within 14 days of the number being received.
15	Proof of registration must be lodged with the relevant Local Municipality and Provincial Environmental Department; made available on request by any stakeholder or Authority; and made available, where the proponent or owner has a website, on such publicly accessible website.	Pending. To be undertaken upon receipt of the registration number.

## 2 Background and Project Description

ABO Wind renewable energies (Pty) Ltd proposes to register the overhead powerline up to 275kV in capacity from Springhaas Collector Substation B to the proposed Artemis Substation (Line 2) located south-west of Dealesville in the Free State Province to add new capacity to the national electricity grid. Line 2 is required to allow power solar generated by the Springhaas Solar PV facilities to the national grid. In order for the Springhaas Solar PV facilities to evacuate the generated solar power to the national grid, a connection must be established between the solar PV facilities and the existing Artemis substation which connects to existing Eskom 400kV lines.

The project is known as the Springhaas to Artemis Grid Connection and would include development of the following:

- Line 2 (this project) – overhead powerlines up to 275kV in capacity from the proposed Springhaas Collector Substation B (registration is imminent) to the proposed Artemis substation

**Table 3: Details of Line 2**

<b>Name</b>	Proposed overhead powerlines up to 275kV in capacity from Springhaas Collector Substation B to the Artemis Substation
<b>Location</b>	Portion 0 of the Farm Alsace No. 1181 Portion 0 of the Farm Lorraine No. 1182 Portion 1 of the Farm Braambosch No. 198 Portion 0 (Remaining Extent) of the Farm Braambosch No. 198 Remainder of the Farm Braklaagte No. 149 Portion 0 (Remaining Extent) of Farm Doornrandjes No. 546 Portion 1 of the Farm Walvischkuil No. 749 Portion 0 of the Farm Leliehoek No. 748 Portion 0 (Remaining Extent) the Farm Klipfontein No. 305
<b>Connection</b>	Will connect Springhaas Solar PV Facility/ies via Collector Substation B to the Artemis Substation on Portion 0 (Remaining Extent) the Farm Klipfontein No. 305
<b>Capacity</b>	Up to 275Kv
<b>Length</b>	Up to approximately 16km
<b>Width</b>	410m in width at its widest point, noting that the final corridor would be kept to the limits of the Standard
<b>Height</b>	Up to approximately 40m
<b>Access</b>	Service road - There would be a jeep track (up to 4m wide) within the development footprint/ servitude of each line (underneath the line), where possible.

## 2.1 Project Location

Line 2 would be located south-west of Dealesville, Free State, within the jurisdiction of the Tokologo Local Municipality, within the Lejweleputswa District Municipality. Line 2 is located in Ward 1 and is also wholly located in the Kimberley renewable energy development zone (REDZ) and the Central Strategic Transmission Corridor. Refer to **Appendix A** for a Locality Map.

## 2.2 Screening Tool Report

A screening tool report was drawn from the DFFE online tool on 12 December 2022. The screening tool report is available in **Appendix B**. The tool identified the following sensitivities.

**Table 4: Site environmental sensitivities as identified by the DFFE Screening Tool Report**

Theme	Screening Tool Sensitivity Rating	Registration process approach
Agricultural	High	An agricultural specialist has completed the site sensitivity verification.
Animal species	Medium	An ecologist has completed the site sensitivity verification.
Aquatic biodiversity	Low	An aquatic ecologist has completed the site sensitivity verification.
Archaeological and cultural heritage theme	Low	An archaeologist has completed the site sensitivity verification.
Avian	N/A	An avifaunal specialist has completed the site sensitivity verification.
Bats	N/A	A bat specialist has completed the site sensitivity verification.
Civil Aviation	Low	N/A, no specialist study necessary
Defence theme	Low	N/A, no specialist study necessary

Theme	Screening Tool Sensitivity Rating	Registration process approach
Palaeontology	High	A palaeontologist has completed the site sensitivity verification.
Plant species	Low	An ecologist has been appointed for a terrestrial biodiversity assessment. The ecologist has recommended that a botanist undertakes a walkdown of a section of the powerline prior to construction.
Terrestrial biodiversity	Very High	An ecologist has completed the site sensitivity verification.

The appointed team of specialists has completed the site sensitivity verifications. The key findings of these assessment will be incorporated into the Environmental Sensitivity Report. The draft Environmental Sensitivity Report will be made available for registered I&APs to review and provide comment on for a period of 30 days.

### 2.3 EAP Contact Details

The EAP for the project, Ms Kate Flood can be contacted using the following details:

Table 5: EAP Contact Details

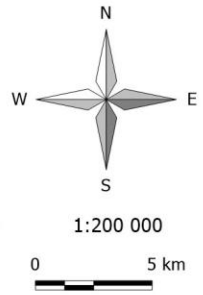
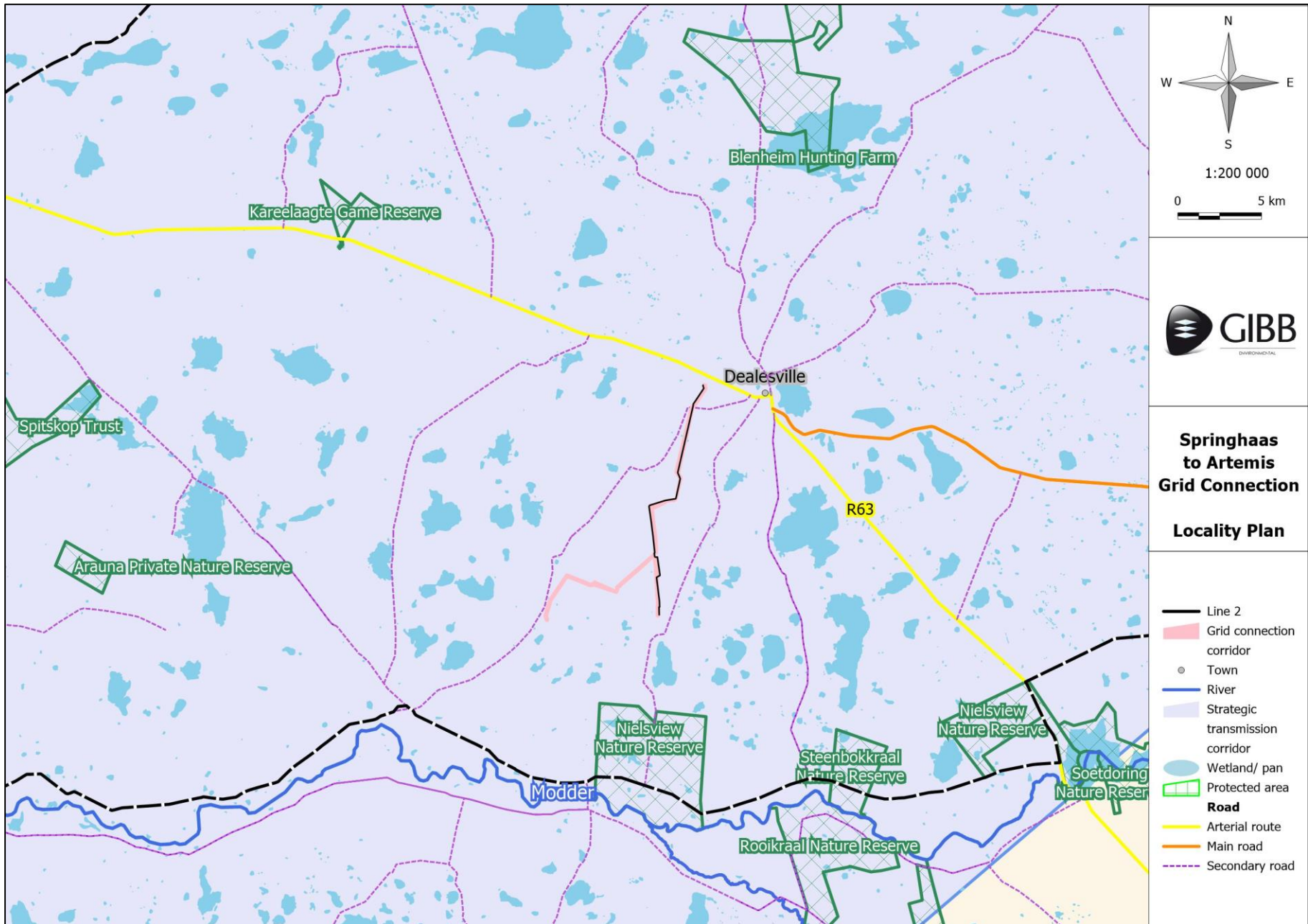
Contact name:	GIBB Environmental Public Participation Office FAO: Ms Kate Flood
Tel:	041 007 0040
Email (preferred method of communication):	<a href="mailto:publicparticipation@gibbenvironmental.co.za">publicparticipation@gibbenvironmental.co.za</a> cc <a href="mailto:kflood@gibbenvironmental.co.za">kflood@gibbenvironmental.co.za</a> & <a href="mailto:zmakepela@gibbenvironmental.co.za">zmakepela@gibbenvironmental.co.za</a>
Address	GIBB Environmental 1 <sup>st</sup> Flood St. George's Corner 116 Park Drive Central Port Elizabeth PO Box 63703, Greenacres, Port Elizabeth

Registration requests must be emailed to GIBB Environmental using these contact details above. The registration form is included in **Appendix C**.



---

## **Appendix A.** Locality Map and Layout Plan



**Springhaas to Artemis  
Grid Connection  
Locality Plan**







- Line 2
- Grid connection corridor
- Town
- River
- Strategic transmission corridor
- Wetland/ pan
- Protected area
- Road**
- Arterial route
- Main road
- Secondary road

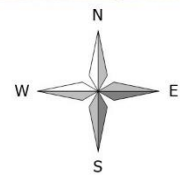




0 1 km

**Springhaas to Artemis Grid Connection  
Line 2. Layout Plan**

-  Line 2
-  Collector Substation B
-  Artemis Substation
-  Grid connection
-  Town
-  Wetland/ pan
-  Farm portion
-  Secondary road



---

## **Appendix B. Screening Tool Report**

**SCREENING REPORT FOR AN ENVIRONMENTAL AUTHORIZATION AS  
REQUIRED BY THE 2014 EIA REGULATIONS – PROPOSED SITE  
ENVIRONMENTAL SENSITIVITY**

**EIA Reference number:** Pending

**Project name:** Springhaas to Artemis grid connection

**Project title:** Proposed 275kV powerlines from Springhaas Collector B Substation to Artemis Substation

**Date screening report generated:** 12/12/2022 13:45:40

**Applicant:** ABO Wind renewal energies

**Compiler:** Kate Flood

**Compiler signature:**

  
.....

**Application Category:** Utilities Infrastructure | Electricity | Distribution and Transmission | Powerline

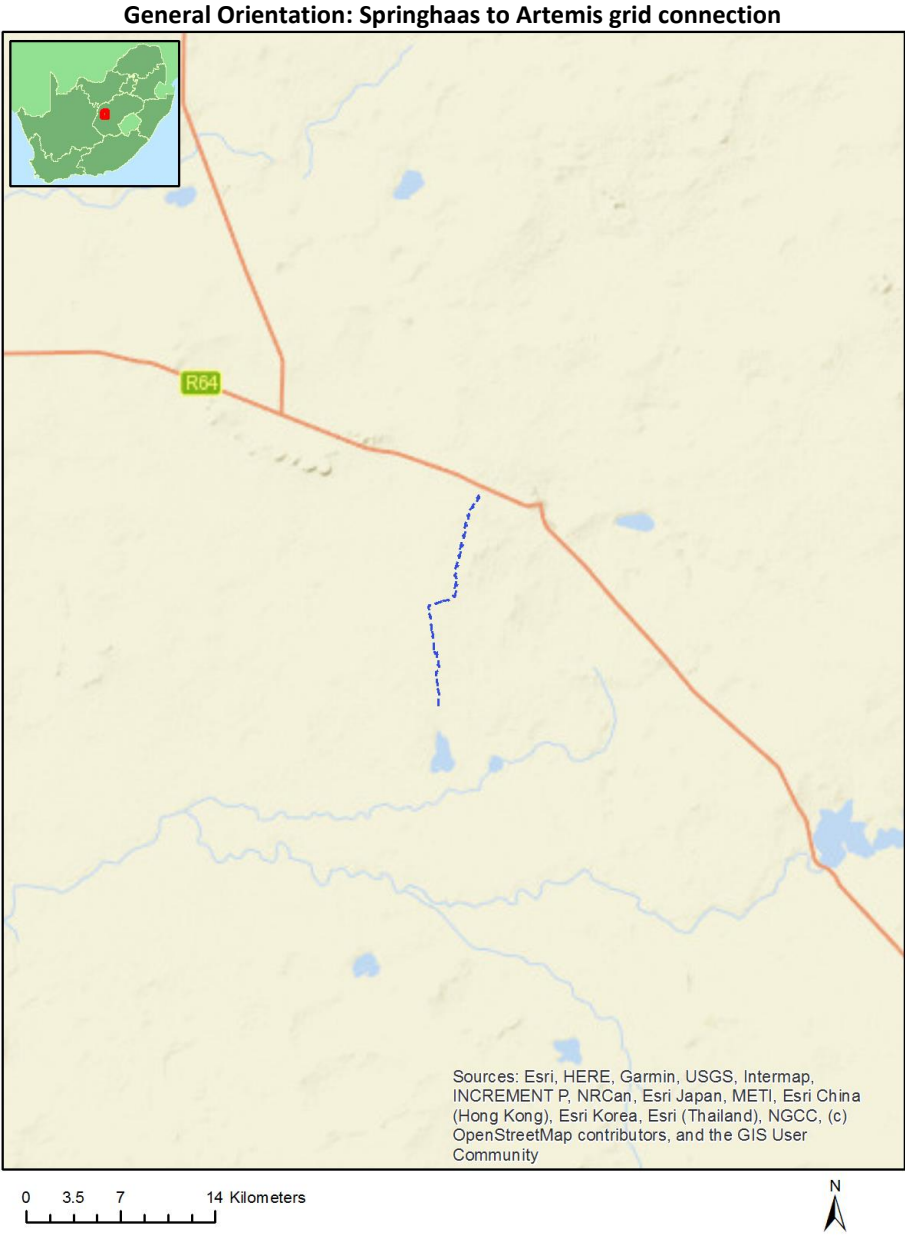
## Table of Contents

Proposed Project Location .....	3
Orientation map 1: General location .....	3
Map of proposed site and relevant area(s) .....	4
Cadastral details of the proposed site .....	4
Wind and Solar developments with an approved Environmental Authorisation or applications under consideration within 30 km of the proposed area .....	5
Environmental Management Frameworks relevant to the application .....	5
Environmental screening results and assessment outcomes .....	5
Relevant development incentives, restrictions, exclusions or prohibitions .....	5
Map indicating proposed development footprint within applicable development incentive, restriction, exclusion or prohibition zones .....	7
Proposed Development Area Environmental Sensitivity .....	7
Specialist assessments identified .....	8
Results of the environmental sensitivity of the proposed area .....	10
MAP OF RELATIVE AGRICULTURE THEME SENSITIVITY .....	10
MAP OF RELATIVE ANIMAL SPECIES THEME SENSITIVITY .....	11
MAP OF RELATIVE AQUATIC BIODIVERSITY THEME SENSITIVITY .....	12
MAP OF RELATIVE ARCHAEOLOGICAL AND CULTURAL HERITAGE THEME SENSITIVITY .....	13
MAP OF RELATIVE CIVIL AVIATION THEME SENSITIVITY .....	14
MAP OF RELATIVE DEFENCE THEME SENSITIVITY .....	15
MAP OF RELATIVE PALEONTOLOGY THEME SENSITIVITY .....	16
MAP OF RELATIVE PLANT SPECIES THEME SENSITIVITY .....	17
MAP OF RELATIVE TERRESTRIAL BIODIVERSITY THEME SENSITIVITY .....	18

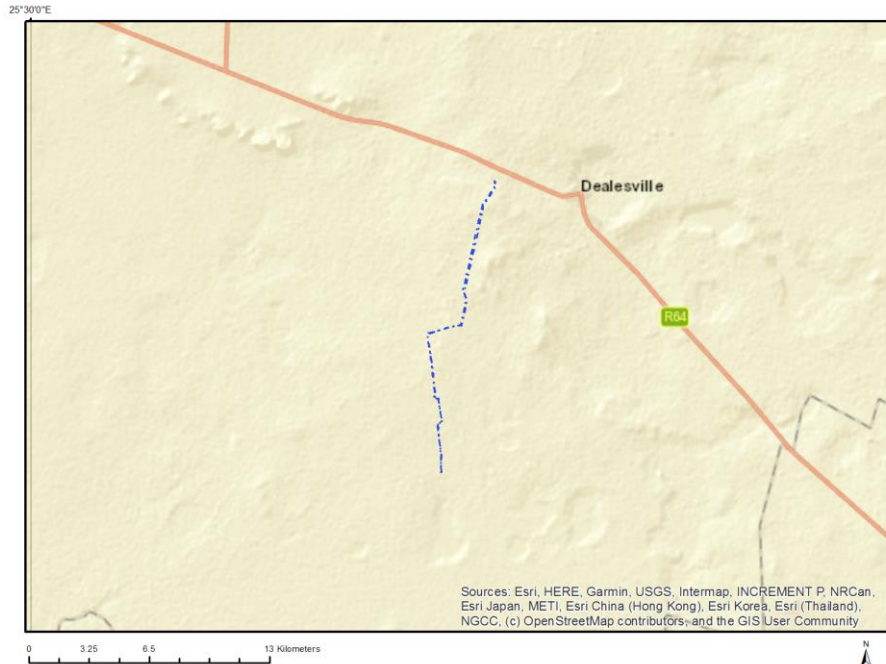


# Proposed Project Location

## Orientation map 1: General location



## Map of proposed site and relevant area(s)



## Cadastral details of the proposed site

Property details:

No	Farm Name	Farm/ Erf No	Portion	Latitude	Longitude	Property Type
1	ALSACE	1181	0	28°47'9.42S	25°41'11.2E	Farm
2	KLIPFONTEIN	305	0	28°40'37.08S	25°45'13.01E	Farm
3	LELIEHOEK	748	0	28°41'14.29S	25°42'28.63E	Farm
4	WALVISCHKUIL	749	0	28°42'23.91S	25°40'56.1E	Farm
5	LORRAINE	1182	0	28°46'22.37S	25°41'20.41E	Farm
6	DOORNRANDJES	546	0	28°42'20.03S	25°43'16.82E	Farm
7	BRAKLAAGTE	149	0	28°43'55.78S	25°42'7.56E	Farm
8	BRAAMBOSCH	198	0	28°45'38.69S	25°42'32.9E	Farm
9	DOORNRANDJES	546	0	28°42'2.38S	25°43'11.04E	Farm Portion
10	LORRAINE	1182	0	28°46'24.81S	25°41'19.5E	Farm Portion
11	BRAKLAAGTE	149	0	28°43'57.04S	25°42'12.7E	Farm Portion
12	ALSACE	1181	0	28°47'11.54S	25°41'10.23E	Farm Portion
13	BRAAMBOSCH	198	0	28°45'17.42S	25°42'21.77E	Farm Portion
14	WALVISCHKUIL	749	1	28°42'46.69S	25°42'21.14E	Farm Portion
15	BRAAMBOSCH	198	1	28°46'6.28S	25°42'25.53E	Farm Portion
16	KLIPFONTEIN	305	0	28°40'38.64S	25°45'17.33E	Farm Portion
17	LELIEHOEK	748	0	28°41'12.45S	25°42'33.2E	Farm Portion

Development footprint<sup>1</sup> vertices:

<sup>1</sup> “development footprint”, means the area within the site on which the development will take place and includes all ancillary developments for example roads, power lines, boundary walls, paving etc. which require vegetation clearance or which will be disturbed and for which the application has been submitted.

No development footprint(s) specified.

## Wind and Solar developments with an approved Environmental Authorisation or applications under consideration within 30 km of the proposed area

No	EIA Reference No	Classification	Status of application	Distance from proposed area (km)
1	14/12/16/3/3/2/719	Solar PV	Approved	0
2	14/12/16/3/3/2/854	Solar PV	Approved	1.1
3	14/12/16/3/3/2/855	Solar PV	Approved	2
4	14/12/16/3/3/2/728	Solar PV	Approved	0
5	12/12/20/1972/1	Solar PV	Approved	28.1
6	14/12/16/3/3/1/2155	Solar PV	Approved	7
7	14/12/16/3/3/2/755	Solar PV	Approved	0.9
8	14/12/16/3/3/2/851	Solar PV	Approved	1.1
9	14/12/16/3/3/2/720	Solar PV	Approved	1.9
10	14/12/16/3/3/2/727	Solar PV	Approved	0
11	14/12/16/3/3/2/853	Solar PV	Approved	1.1
12	14/12/16/3/3/2/726	Solar PV	Approved	0
13	12/12/20/1972/2	Solar PV	Approved	27.2
14	14/12/16/3/3/1/2156	Solar PV	Approved	7
15	14/12/16/3/3/2/723	Solar PV	Approved	5.1
16	14/12/16/3/3/1/2154	Solar PV	Approved	7
17	12/12/20/1972	Solar PV	Approved	27.2
18	14/12/16/3/3/2/852	Solar PV	Approved	2
19	14/12/16/3/3/2/724	Solar PV	Approved	0.6
20	14/12/16/3/3/2/718	Solar PV	Approved	0
21	14/12/16/3/3/2/722	Solar PV	Approved	0
22	14/12/16/3/3/2/717	Solar PV	Approved	0.6
23	14/12/16/3/3/2/721	Solar PV	Approved	0.9

## Environmental Management Frameworks relevant to the application

No intersections with EMF areas found.

## Environmental screening results and assessment outcomes

The following sections contain a summary of any development incentives, restrictions, exclusions or prohibitions that apply to the proposed development site as well as the most environmental sensitive features on the site based on the site sensitivity screening results for the application classification that was selected. The application classification selected for this report is:

**Utilities Infrastructure | Electricity | Distribution and Transmission | Powerline.**

## Relevant development incentives, restrictions, exclusions or prohibitions

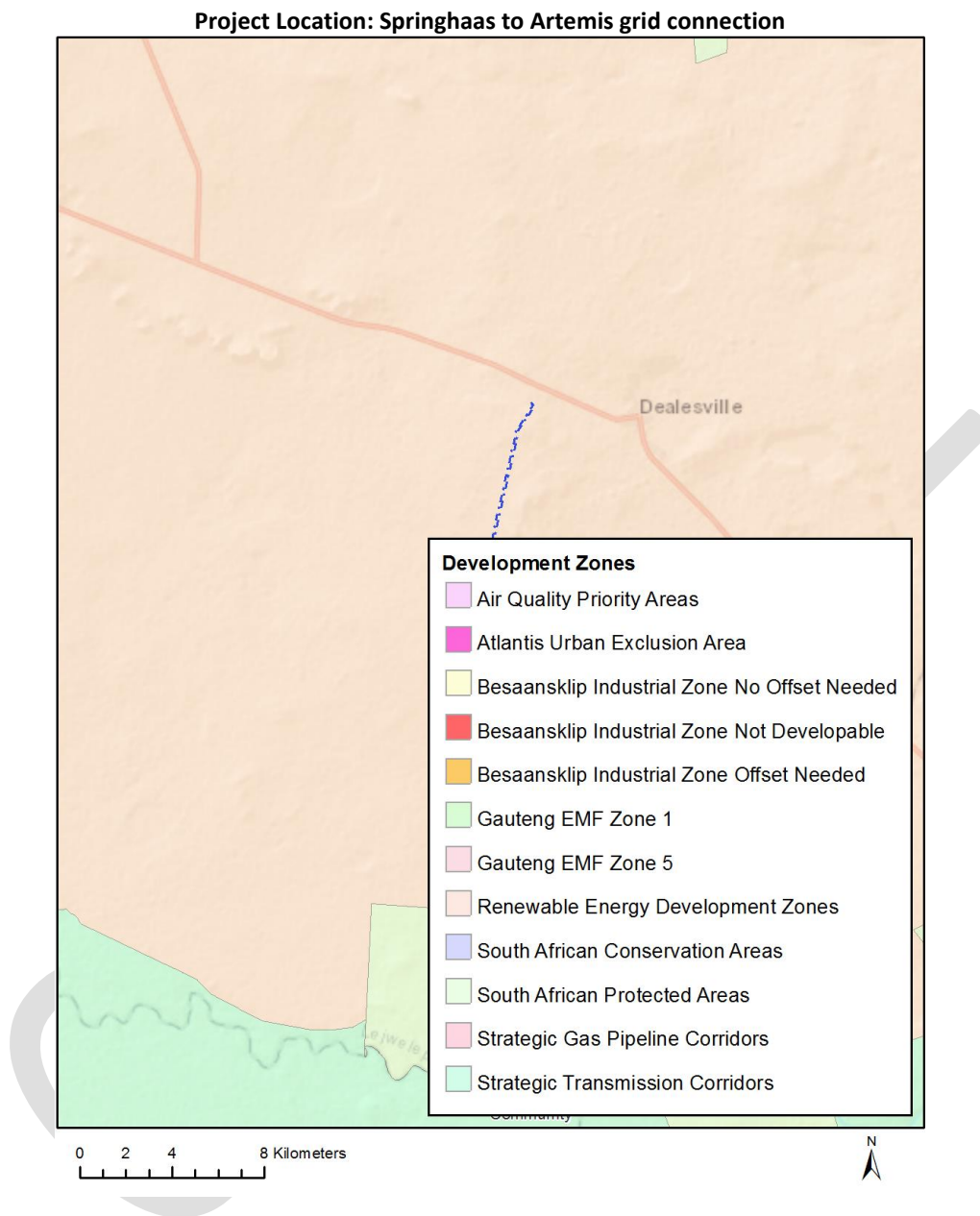
The following development incentives, restrictions, exclusions or prohibitions and their implications that apply to this site are indicated below.

Incentiv	Implication
----------	-------------

<b>e, restrictio n or prohibiti on</b>	
Strategic Transmissi on Corridor- Central corridor	<a href="https://screening.environment.gov.za/ScreeningDownloads/DevelopmentZones/Combined_EGI.pdf">https://screening.environment.gov.za/ScreeningDownloads/DevelopmentZones/Combined_EGI.pdf</a>
Renewable energy developme nt zones 5- Kimberley	<a href="https://screening.environment.gov.za/ScreeningDownloads/DevelopmentZones/Combined_REDZ.pdf">https://screening.environment.gov.za/ScreeningDownloads/DevelopmentZones/Combined_REDZ.pdf</a>

OFFICIAL

Map indicating proposed development footprint within applicable development incentive, restriction, exclusion or prohibition zones



### Proposed Development Area Environmental Sensitivity

The following summary of the development site environmental sensitivities is identified. Only the highest environmental sensitivity is indicated. The footprint environmental sensitivities for the proposed development footprint as identified, are indicative only and must be verified on site by a suitably qualified person before the specialist assessments identified below can be confirmed.

Theme	Very High sensitivity	High sensitivity	Medium sensitivity	Low sensitivity
Agriculture Theme		X		
Animal Species Theme			X	

Aquatic Biodiversity Theme				X
Archaeological and Cultural Heritage Theme				X
Civil Aviation Theme				X
Defence Theme				X
Paleontology Theme		X		
Plant Species Theme				X
Terrestrial Biodiversity Theme	X			

### Specialist assessments identified

Based on the selected classification, and the environmental sensitivities of the proposed development footprint, the following list of specialist assessments have been identified for inclusion in the assessment report. It is the responsibility of the EAP to confirm this list and to motivate in the assessment report, the reason for not including any of the identified specialist study including the provision of photographic evidence of the site situation.

<b>N o</b>	<b>Special ist assessm ent</b>	<b>Assessment Protocol</b>
1	Agricult ural Impact Assessm ent	<a href="https://screening.environment.gov.za/ScreeningDownloads/AssessmentProtocols/Gazetted_General_Agriculture_Assessment_Protocols.pdf">https://screening.environment.gov.za/ScreeningDownloads/AssessmentProtocols/Gazetted_General_Agriculture_Assessment_Protocols.pdf</a>
2	Landsca pe/Visu al Impact Assessm ent	<a href="https://screening.environment.gov.za/ScreeningDownloads/AssessmentProtocols/Gazetted_General_Requirement_Assessment_Protocols.pdf">https://screening.environment.gov.za/ScreeningDownloads/AssessmentProtocols/Gazetted_General_Requirement_Assessment_Protocols.pdf</a>
3	Archaeo logical and Cultural Heritage Impact Assessm ent	<a href="https://screening.environment.gov.za/ScreeningDownloads/AssessmentProtocols/Gazetted_General_Requirement_Assessment_Protocols.pdf">https://screening.environment.gov.za/ScreeningDownloads/AssessmentProtocols/Gazetted_General_Requirement_Assessment_Protocols.pdf</a>
4	Palaeon tology Impact Assessm ent	<a href="https://screening.environment.gov.za/ScreeningDownloads/AssessmentProtocols/Gazetted_General_Requirement_Assessment_Protocols.pdf">https://screening.environment.gov.za/ScreeningDownloads/AssessmentProtocols/Gazetted_General_Requirement_Assessment_Protocols.pdf</a>
5	Terrestri al Biodiver sity Impact Assessm ent	<a href="https://screening.environment.gov.za/ScreeningDownloads/AssessmentProtocols/Gazetted_Terrestrial_Biodiversity_Assessment_Protocols.pdf">https://screening.environment.gov.za/ScreeningDownloads/AssessmentProtocols/Gazetted_Terrestrial_Biodiversity_Assessment_Protocols.pdf</a>
6	Aquatic Biodiver sity Impact Assessm ent	<a href="https://screening.environment.gov.za/ScreeningDownloads/AssessmentProtocols/Gazetted_Aquatic_Biodiversity_Assessment_Protocols.pdf">https://screening.environment.gov.za/ScreeningDownloads/AssessmentProtocols/Gazetted_Aquatic_Biodiversity_Assessment_Protocols.pdf</a>

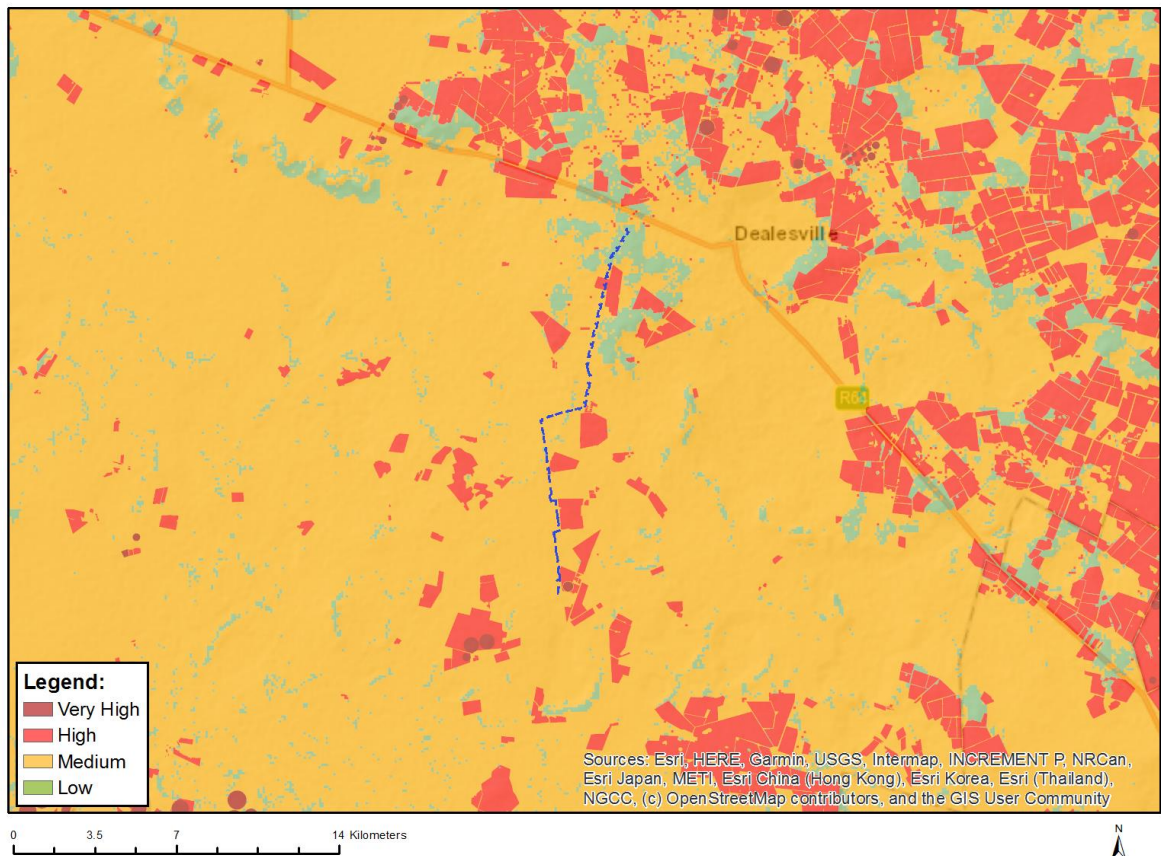


7	Avian Impact Assessment	<a href="https://screening.environment.gov.za/ScreeningDownloads/AssessmentProtocols/Gazetted_Avifauna_Assessment_Protocols.pdf">https://screening.environment.gov.za/ScreeningDownloads/AssessmentProtocols/Gazetted_Avifauna_Assessment_Protocols.pdf</a>
8	Civil Aviation Assessment	<a href="https://screening.environment.gov.za/ScreeningDownloads/AssessmentProtocols/Gazetted_Civil_Aviation_Installations_Assessment_Protocols.pdf">https://screening.environment.gov.za/ScreeningDownloads/AssessmentProtocols/Gazetted_Civil_Aviation_Installations_Assessment_Protocols.pdf</a>
9	RFI Assessment	<a href="https://screening.environment.gov.za/ScreeningDownloads/AssessmentProtocols/Gazetted_General_Requirement_Assessment_Protocols.pdf">https://screening.environment.gov.za/ScreeningDownloads/AssessmentProtocols/Gazetted_General_Requirement_Assessment_Protocols.pdf</a>
10	Geotechnical Assessment	<a href="https://screening.environment.gov.za/ScreeningDownloads/AssessmentProtocols/Gazetted_General_Requirement_Assessment_Protocols.pdf">https://screening.environment.gov.za/ScreeningDownloads/AssessmentProtocols/Gazetted_General_Requirement_Assessment_Protocols.pdf</a>
11	Plant Species Assessment	<a href="https://screening.environment.gov.za/ScreeningDownloads/AssessmentProtocols/Gazetted_Plant_Species_Assessment_Protocols.pdf">https://screening.environment.gov.za/ScreeningDownloads/AssessmentProtocols/Gazetted_Plant_Species_Assessment_Protocols.pdf</a>
12	Animal Species Assessment	<a href="https://screening.environment.gov.za/ScreeningDownloads/AssessmentProtocols/Gazetted_Animal_Species_Assessment_Protocols.pdf">https://screening.environment.gov.za/ScreeningDownloads/AssessmentProtocols/Gazetted_Animal_Species_Assessment_Protocols.pdf</a>

## Results of the environmental sensitivity of the proposed area.

The following section represents the results of the screening for environmental sensitivity of the proposed site for relevant environmental themes associated with the project classification. It is the duty of the EAP to ensure that the environmental themes provided by the screening tool are comprehensive and complete for the project. Refer to the disclaimer.

### MAP OF RELATIVE AGRICULTURE THEME SENSITIVITY

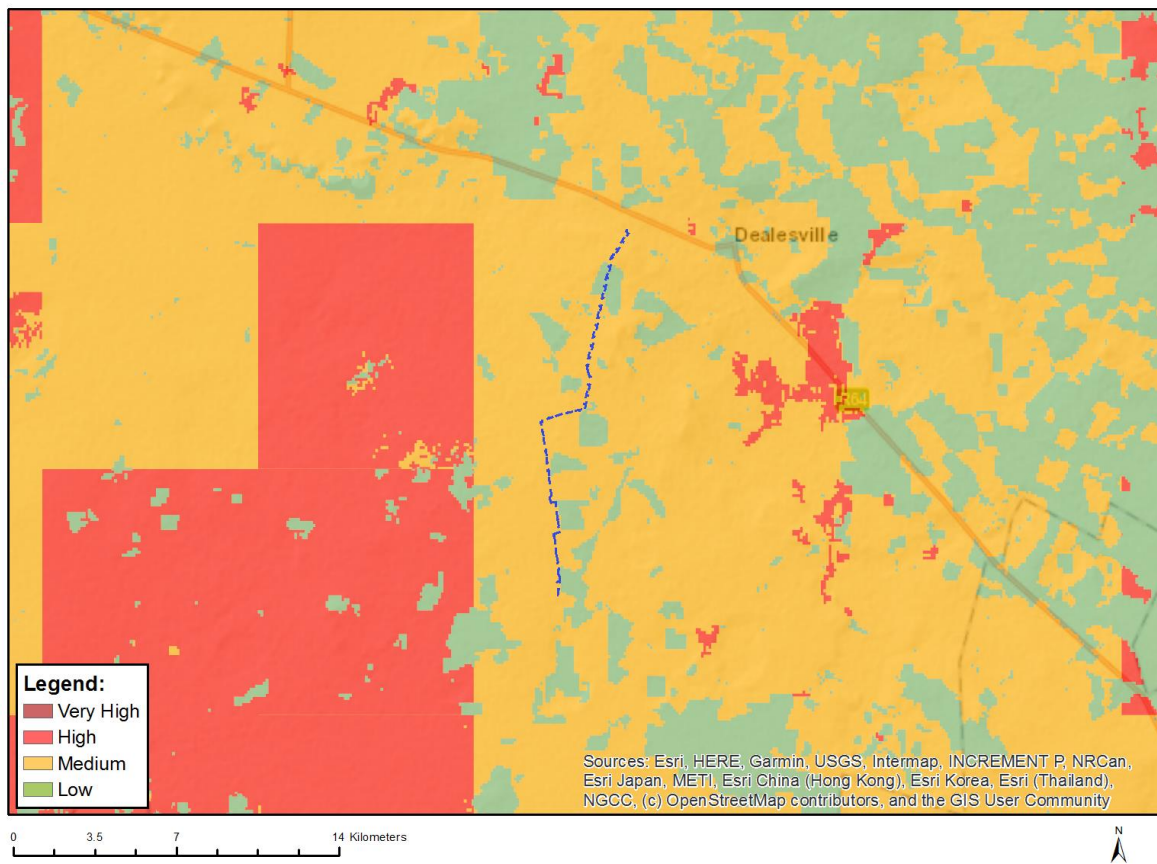


Very High sensitivity	High sensitivity	Medium sensitivity	Low sensitivity
	X		

#### Sensitivity Features:

Sensitivity	Feature(s)
High	Annual Crop Cultivation / Planted Pastures Rotation; Land capability; 06. Low-Moderate/07. Low-Moderate/08. Moderate
Low	Land capability; 01. Very low/02. Very low/03. Low-Very low/04. Low-Very low/05. Low
Medium	Land capability; 06. Low-Moderate/07. Low-Moderate/08. Moderate

## MAP OF RELATIVE ANIMAL SPECIES THEME SENSITIVITY



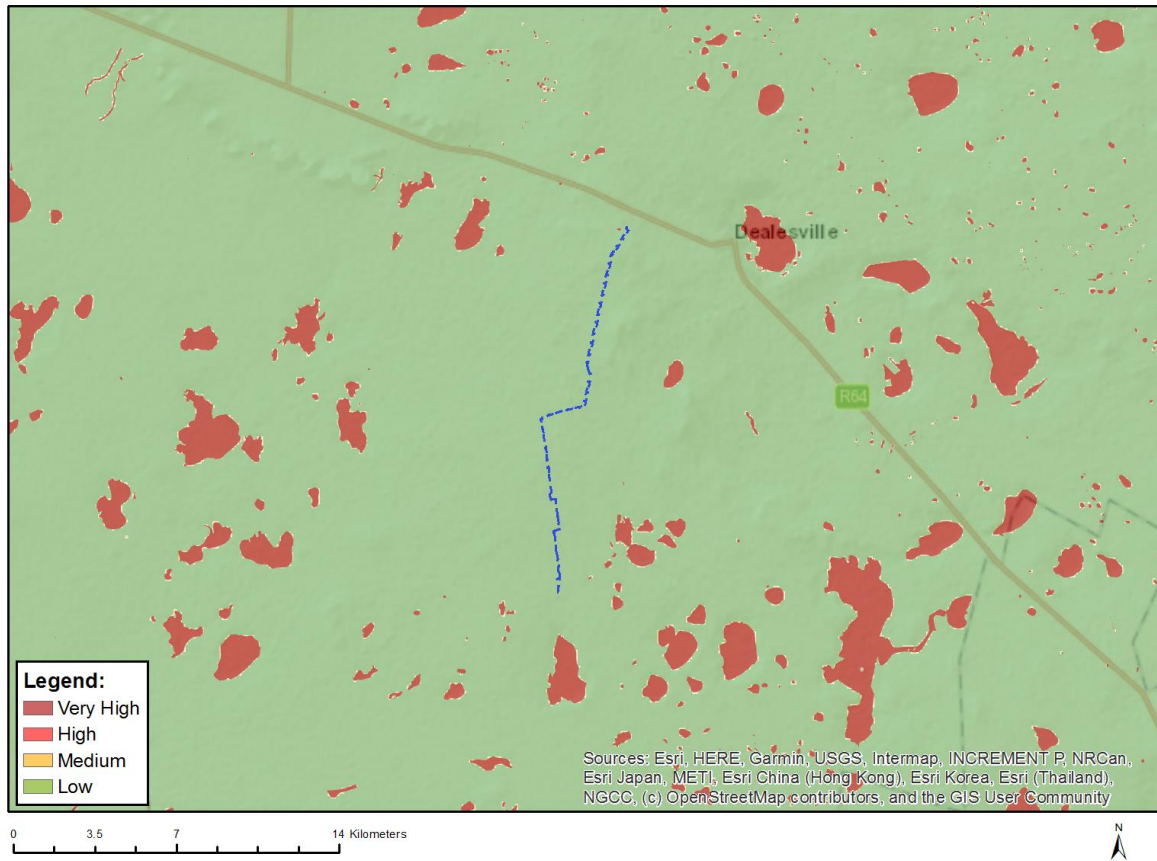
Where only a sensitive plant unique number or sensitive animal unique number is provided in the screening report and an assessment is required, the environmental assessment practitioner (EAP) or specialist is required to email SANBI at [eiadatarequests@sanbi.org.za](mailto:eiadatarequests@sanbi.org.za) listing all sensitive species with their unique identifiers for which information is required. The name has been withheld as the species may be prone to illegal harvesting and must be protected. SANBI will release the actual species name after the details of the EAP or specialist have been documented.

Very High sensitivity	High sensitivity	Medium sensitivity	Low sensitivity
		X	

### Sensitivity Features:

Sensitivity	Feature(s)
Low	Subject to confirmation
Medium	Aves-Neotis ludwigii

## MAP OF RELATIVE AQUATIC BIODIVERSITY THEME SENSITIVITY

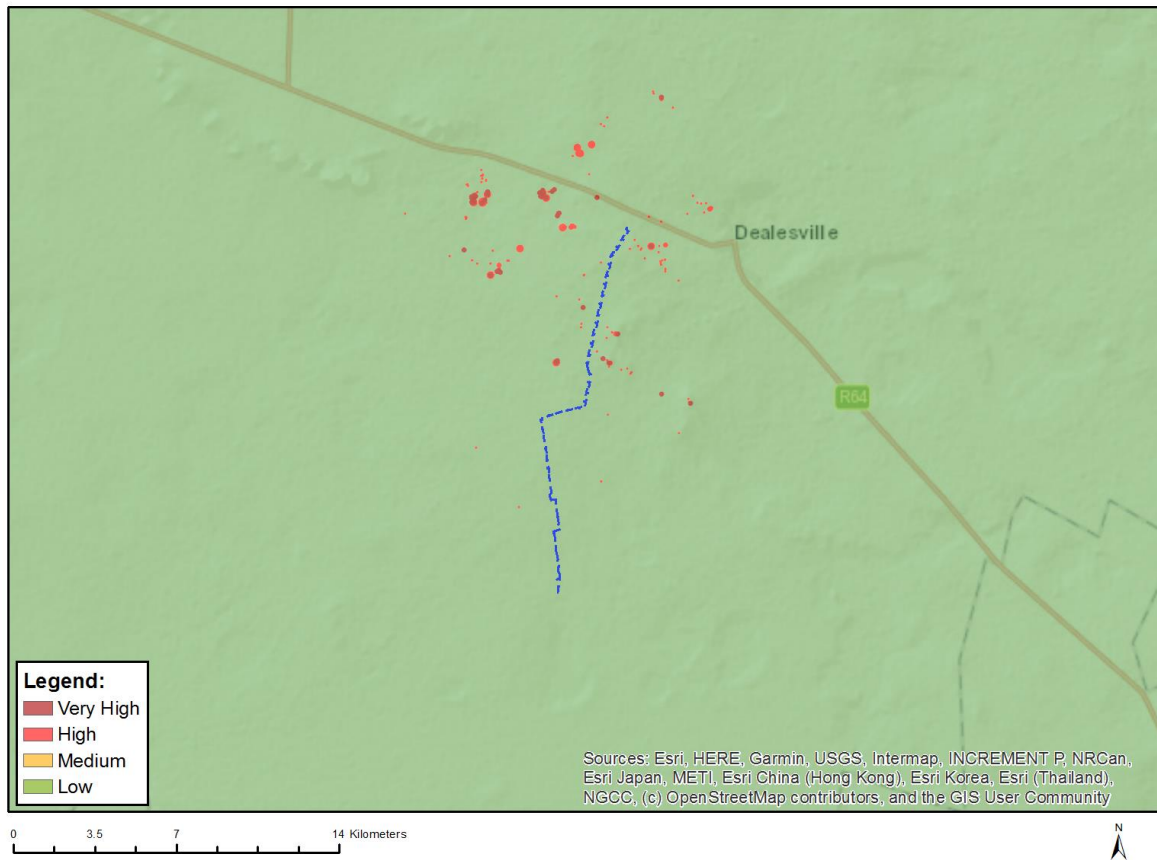


Very High sensitivity	High sensitivity	Medium sensitivity	Low sensitivity
			X

### Sensitivity Features:

Sensitivity	Feature(s)
Low	Low sensitivity

# MAP OF RELATIVE ARCHAEOLOGICAL AND CULTURAL HERITAGE THEME SENSITIVITY



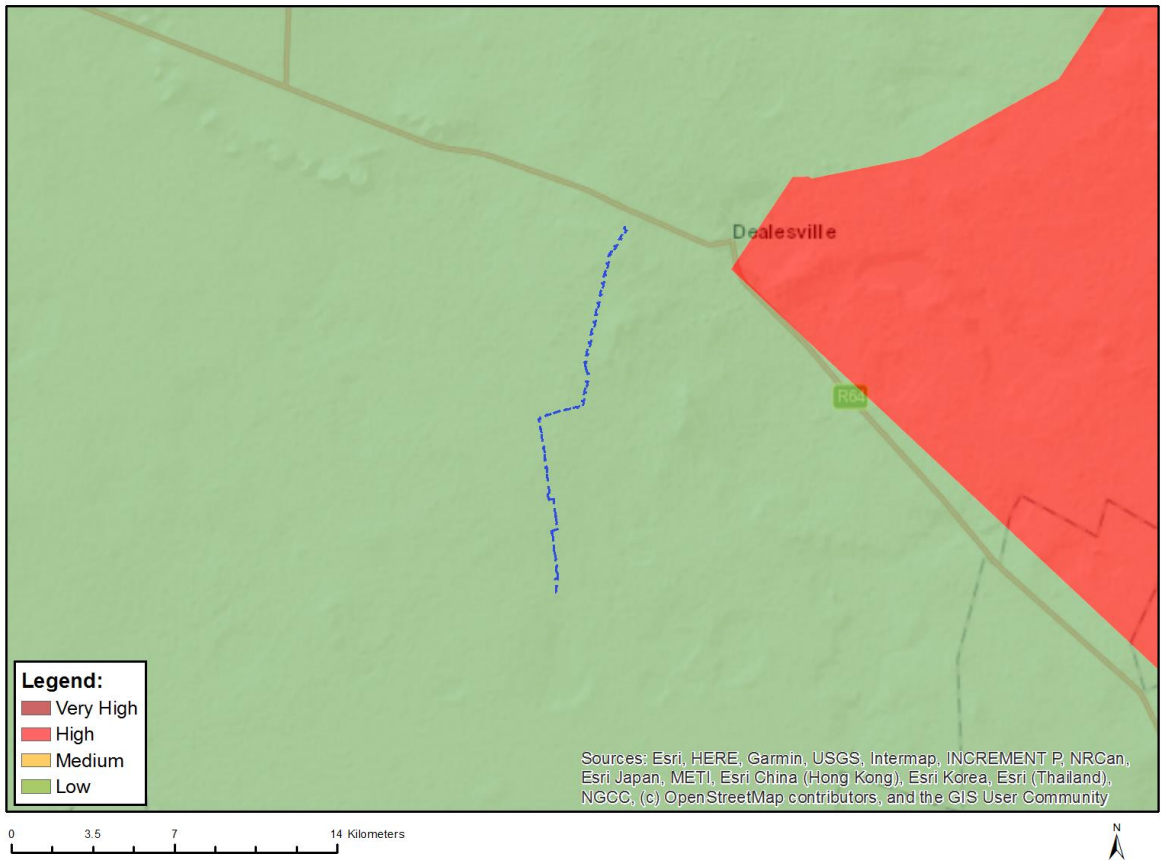
Very High sensitivity	High sensitivity	Medium sensitivity	Low sensitivity
			X

## Sensitivity Features:

Sensitivity	Feature(s)
Low	Low sensitivity



# MAP OF RELATIVE CIVIL AVIATION THEME SENSITIVITY



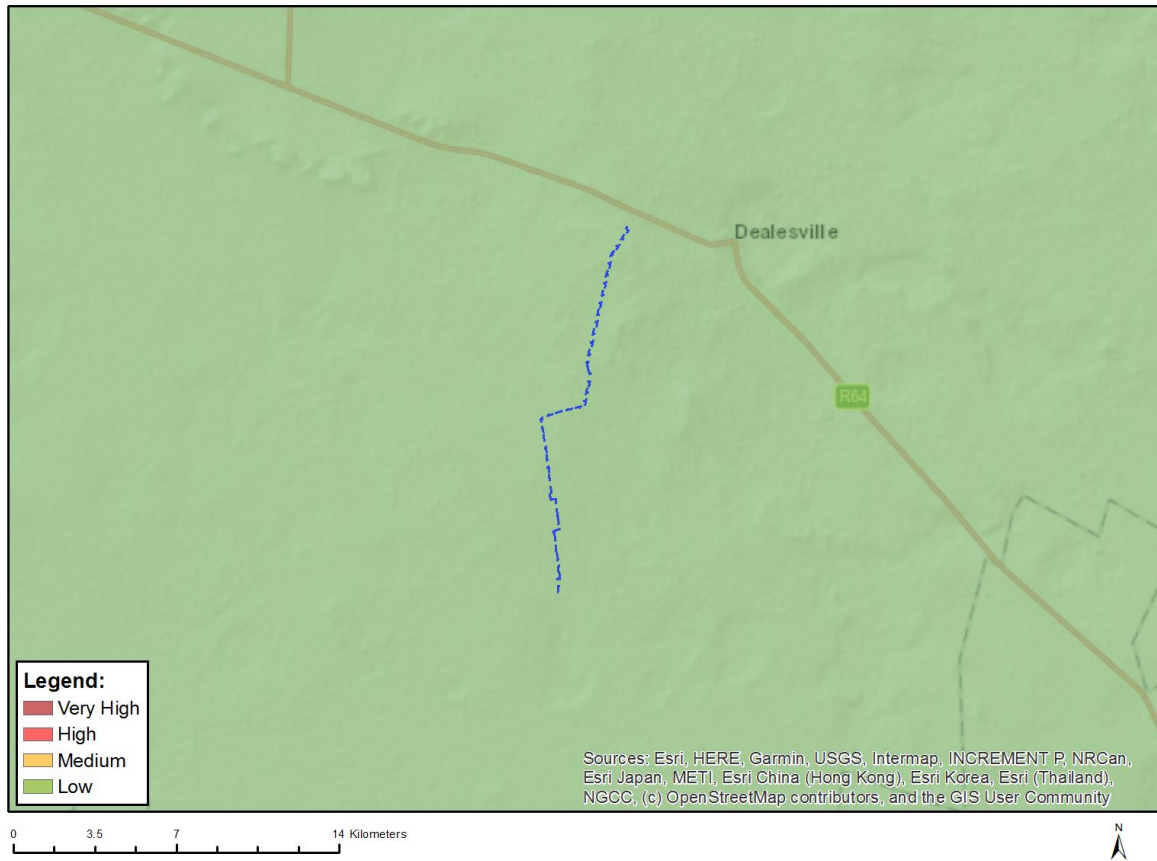
Very High sensitivity	High sensitivity	Medium sensitivity	Low sensitivity
			X

## Sensitivity Features:

Sensitivity	Feature(s)
Low	Low sensitivity



## MAP OF RELATIVE DEFENCE THEME SENSITIVITY

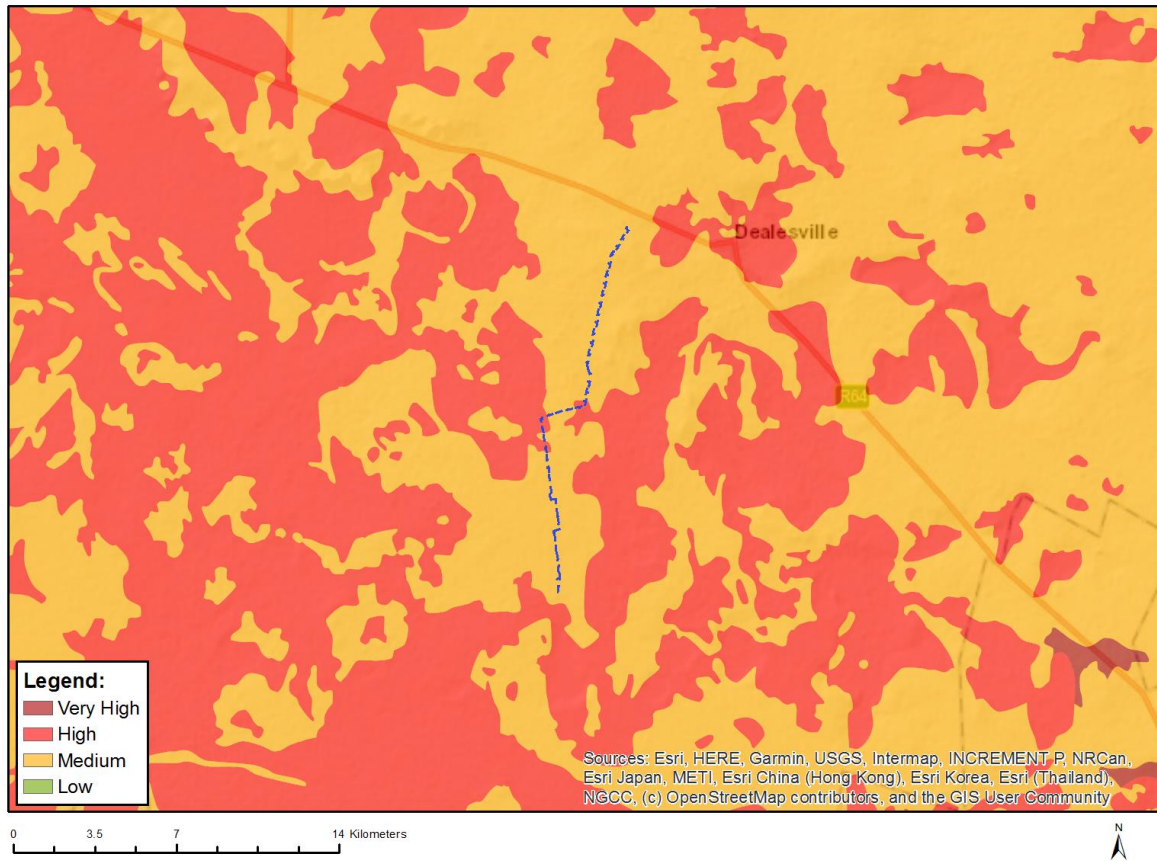


Very High sensitivity	High sensitivity	Medium sensitivity	Low sensitivity
			X

### Sensitivity Features:

Sensitivity	Feature(s)
Low	Low Sensitivity

## MAP OF RELATIVE PALEONTOLOGY THEME SENSITIVITY

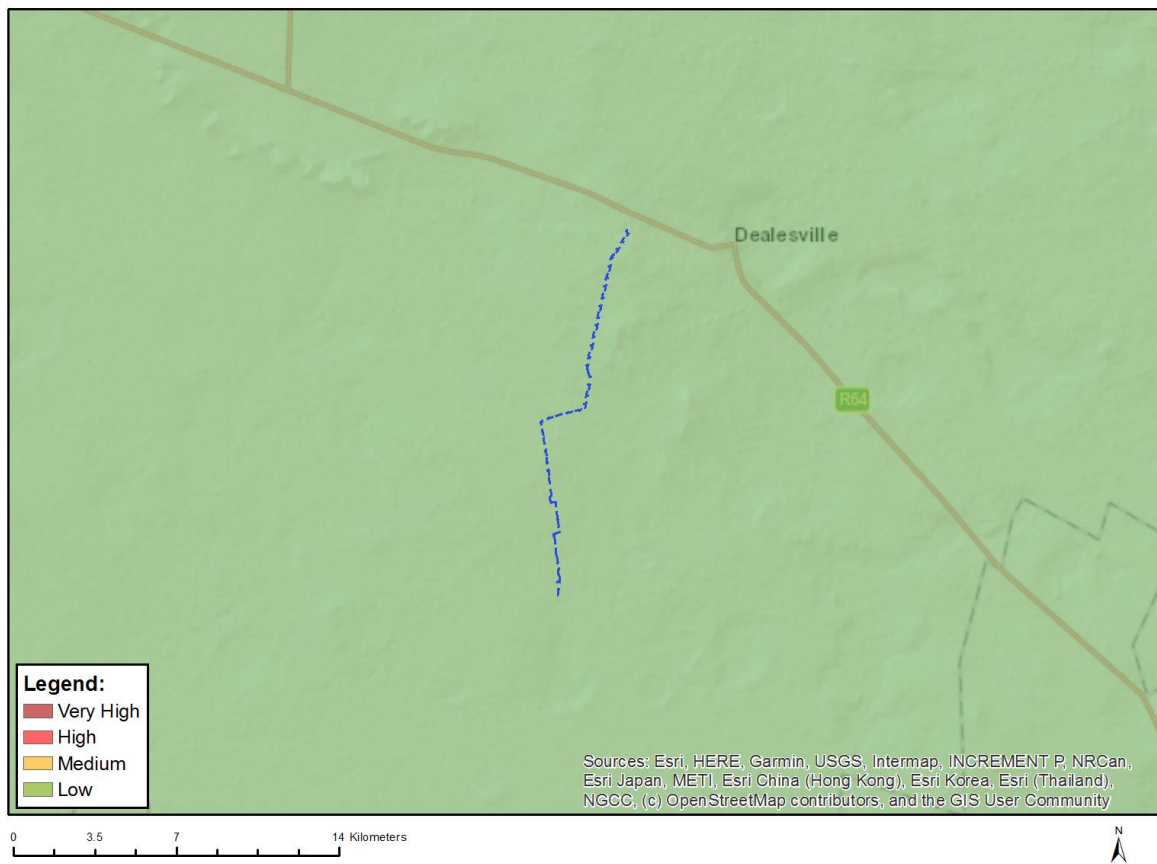


Very High sensitivity	High sensitivity	Medium sensitivity	Low sensitivity
	X		

### Sensitivity Features:

Sensitivity	Feature(s)
High	Features with a High paleontological sensitivity
Medium	Features with a Medium paleontological sensitivity

## MAP OF RELATIVE PLANT SPECIES THEME SENSITIVITY



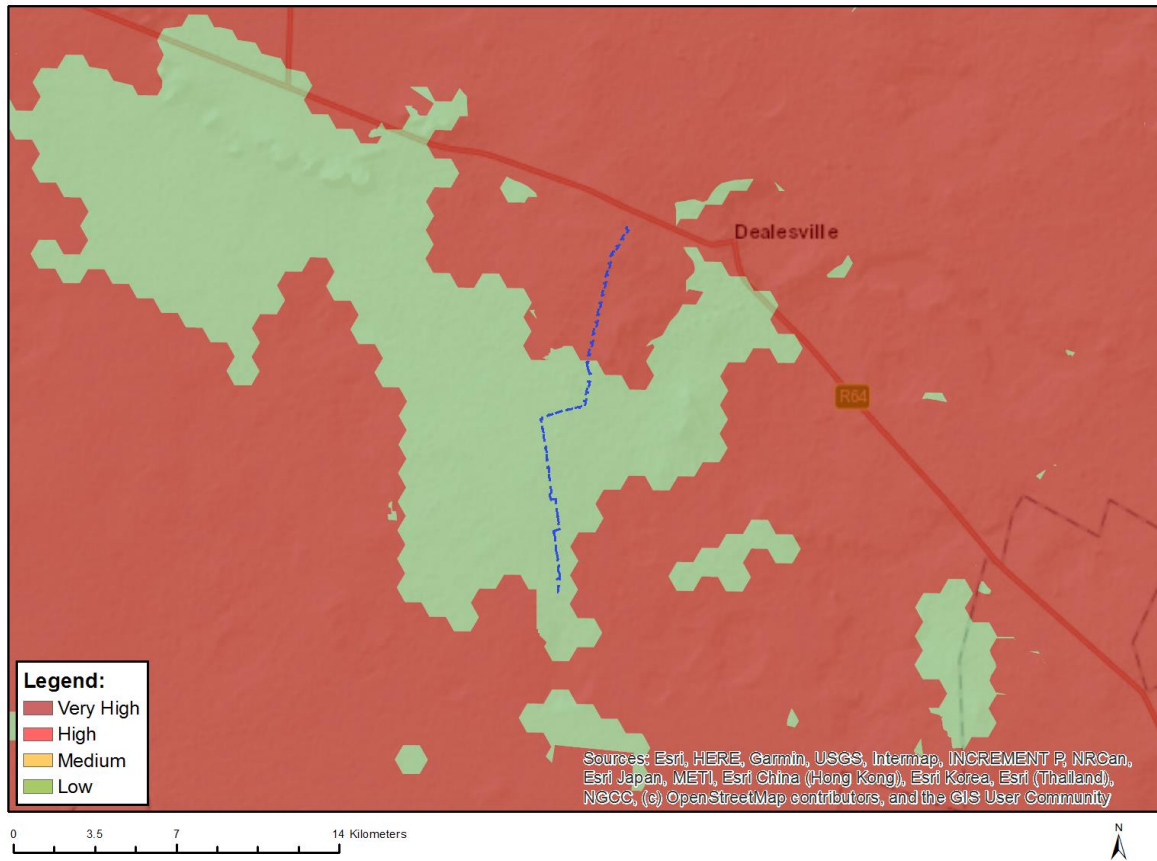
Where only a sensitive plant unique number or sensitive animal unique number is provided in the screening report and an assessment is required, the environmental assessment practitioner (EAP) or specialist is required to email SANBI at [eiadatarequests@sanbi.org.za](mailto:eiadatarequests@sanbi.org.za) listing all sensitive species with their unique identifiers for which information is required. The name has been withheld as the species may be prone to illegal harvesting and must be protected. SANBI will release the actual species name after the details of the EAP or specialist have been documented.

Very High sensitivity	High sensitivity	Medium sensitivity	Low sensitivity
			X

### Sensitivity Features:

Sensitivity	Feature(s)
Low	Low Sensitivity

## MAP OF RELATIVE TERRESTRIAL BIODIVERSITY THEME SENSITIVITY



Very High sensitivity	High sensitivity	Medium sensitivity	Low sensitivity
X			

### Sensitivity Features:

Sensitivity	Feature(s)
Low	Low Sensitivity
Very High	Critical biodiversity area 1
Very High	Endangered ecosystem

---

## **Appendix C. I&AP Registration Form**



**INTERESTED AND AFFECTED PARTY REGISTRATION FORM**

Name	
Organisation	
Telephone Number	
Physical Address	
Postal Address	
Fax No.	
Email address	

Please state your interest (i.e. direct business, financial, personal or other interest) with respect to the approval or refusal of the registration of the proposed Springhaas to Artemis Grid Connection application.

---

---

---

---

---

---

---

---

---

---

Please state any concerns, suggestions and/or potential impacts that should be considered during the Grid Connection Application Process.

---

---

---

---

---

---

---

---

---

---

I&AP registrations and comments to be submitted to GIBB Environmental using the details below:

**Attention: Kate Flood**

Tel: 041 007 0040

Email: [publicparticipation@gibbenvironmental.co.za](mailto:publicparticipation@gibbenvironmental.co.za)



The Public Participation Office is open during office hours Monday to Friday, excluding Public holidays.