



Emvelo Quality and Environmental consultant (PTY) Ltd
Promenade Building, 1st Floor, Unit D2, 24 Lira Link CBD,
Richards Bay, 3900. P.O. Box 101672, Meerensee, 3901
Tel: 035 789 0632, Cell: (078) 2849 332 Fax: 086 577 5220,

BACKGROUND INFORMATION DOCUMENT

**THE PROPOSED CONSTRUCTION OF
ETHAFENI GRAVEL ACCESS ROAD
AND CULVERT CAUSEWAY, WITHIN
THE JURISDICTION OF UMLALAZI
LOCAL MUNICIPALITY, KING
CETSHWAYO DISTRICT, KWAZULU-
NATAL**

November 2019

Prepared by:

**Emvelo Quality and Environmental
Consultant (PTY) Ltd**

On Behalf of



uMlalazi Local Municipality

INTRODUCTION

The uMlalazi Local Municipality proposes to construct the Ethafeni gravel access road and a Culvert Causeway to serve the community of Ward 18. Therefore, an environmental impact assessment (EIA) is underway, assisting the municipality to identify all potential adverse environmental consequences of the project, their extent, significance and to ensure that the environmental management requirements are adequately implemented.

The purpose of this Background information document is to provide Interested and Affected Party (I&AP), with a brief description of the EIA process to be undertaken and to obtain comments and contributions from I&AP's with regards to the potential impacts of the project.

PROJECT DESCRIPTION

The proposed development entails the construction of a 3.5km x 5m wide gravel access road and a Culvert Causeway:

The culvert will consist of four (4) pre-cast portal culverts/cells. Each portal culvert cell will be 2.1m long x 3.4m wide and 2.1m in height. with 2x2 wingwalls on either side of a culvert. Wingwalls will be constructed on separate foundation using in-situ material and compacted using fills between the

wings, each having a length of 2m, a width of 2m and a height of 3m and there will be a 200 mm foundation slab made up of concrete.

Micro drainage infrastructure which consists of side drains (toe drains and 1000V-drains) and grassed lined drains will be upgraded.

STUDY AREA

The site co-ordinates are as follows; the road start at (29° 0'38.69"S& 31°29'4.16"E), crosses the unnamed stream at (28°59'37.10"S& 31°29'45.87"E) and the ends at (28°59'37.85"S& 31°30'2.48"E).

WHAT IS AN ENVIRONMENTAL IMPACT ASSESSMENT?

An EIA is an effective planning and decision-making tool, which allows for the identification of potential adverse environmental consequences of a proposed project, and its management through the planning process.

In terms of the National Environmental Management Act, 1998 (Act No.107 of 1998), as read with the Environmental Impact Assessment (EIA) Regulations of 07 April 2017, an Environmental Authorization must be obtained from the relevant decision-making authority, the Department of Economic Development, Tourism and Environmental Affairs (DEDTEA), prior to the commencement of any of the listed activities that may result in potential negative impacts

on the environment. Thus, an environmental impact assessment is required.

A provision in the EIA Regulations is made for two forms of assessment: Basic Assessment and Scoping & EIA. The EIA regulations specify that: Activities identified in Listing Notice 1 and 3 (GNR 327 and 324 of 2017) requires Basic Assessment; Activities identified in Listing Notice 2 (GNR 325 of 2017) are subject to a Scoping and EIA. This application will follow a Basic Assessment process

LISTED ACTIVITIES TRIGGERED BY THIS PROJECT

The proposed project triggers the following listed activities in Listing Notices of (GNR 983).

Table 1: Listed Activities

LISTING NOTICE	ACTIVITIES	DESCRIPTION OF ACTIVITY
1	Activity 19	The infilling or deposition of any material of more than 10m ³ into or the dredging, excavation, removal of soil, sand, shell, shell grit, pebbles or rock of more than 10m ³ from a watercourse

LISTING NOTICE	ACTIVITIES	DESCRIPTION OF ACTIVITY
1	Activity 12	The development of (xii) Infrastructure or structures with a physical footprint of 100 square meters or more, where such a development occurs (a) within a watercourse (b) in front of a development setback or (c) if no development setback exists, within 32 metres of a watercourse, measured from edges of a watercourse

ENVIRONMENTAL IMPACT ASSESSMENT PROCESS

In terms of the Environmental Impact Assessment (EIA) regulations, an independent Environmental Assessment Practitioner must be appointed to conduct the EIA. Therefore, The Emvelo Quality and Environmental Consultant has been appointed to conduct the EIA for the proposed development. Emvelo will identify and assess the potential environmental impacts associated with the proposed

activity by conducting an objective and independent Basic assessment process which includes; Lodging an Application with the KZN Department of Environmental Affairs, conducting Public Participation Process and Compiling the Basic Assessment Report. The information and opinions of Interested and Affected Parties (I&APs) will be also collected and passed on to the Department of Economic Development Tourism and Environmental Affairs (EDTEA). In this way, an informed decision-making process can take place.

WHAT IS PUBLIC PARTICIPATION?

Public participation is the process that promotes information sharing, consultation and active involvement amongst stakeholders and all interested and affected parties.

During the Public Participation Process, input from the proponent, technical experts, government authorities and the general public will be gathered to result in a better understanding of the project for all involved thus ensuring informed decision-making throughout the process.

REGISTRATION OF INTERESTED AND AFFECTED PARTIES.

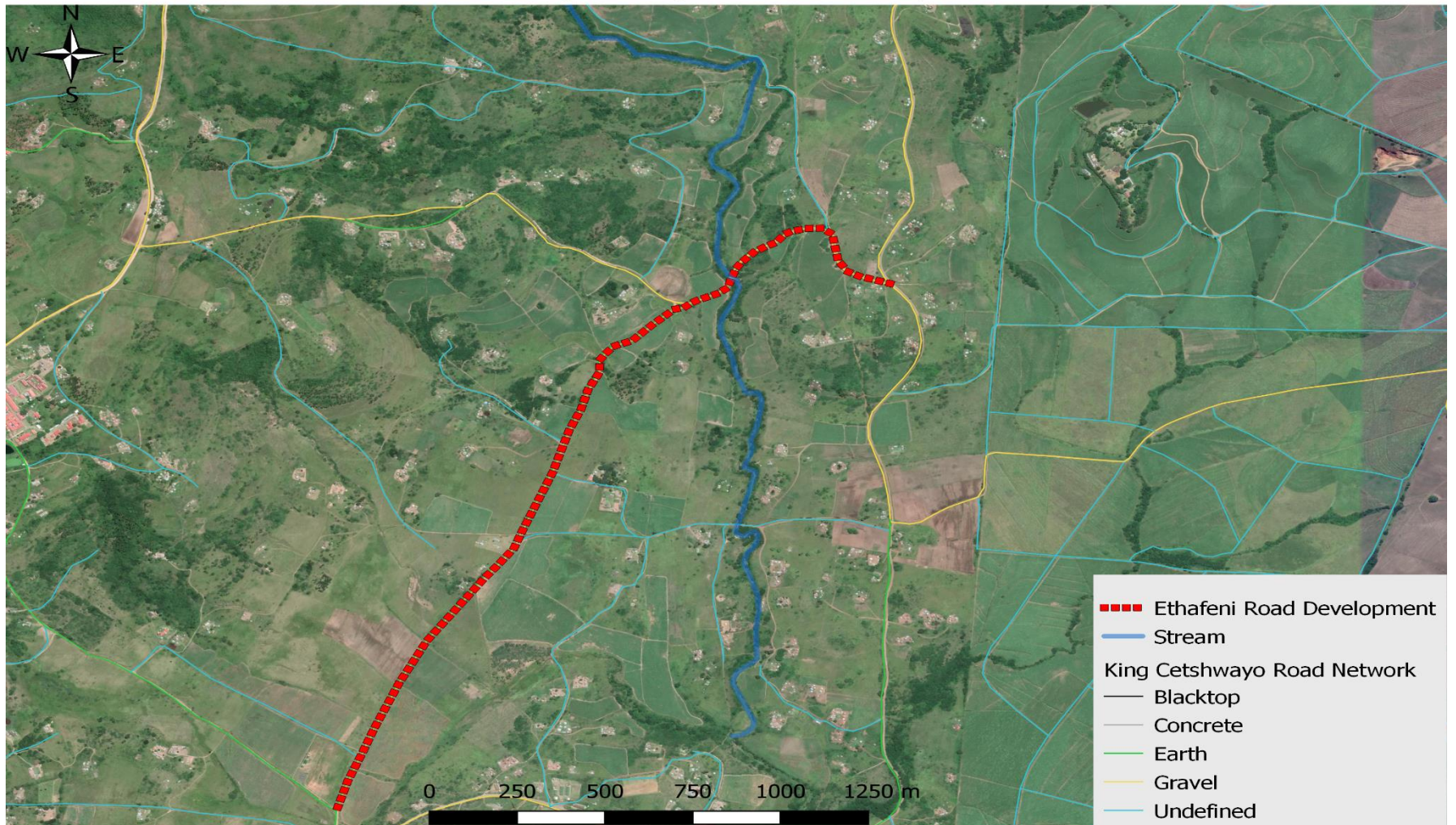
Any person, company, authority or other entity that might be directly or indirectly

affected by the proposed activity is invited to register as an I&AP, in order to assist the EAP in identifying possible environmental, economic and social impacts of the proposed development and to make suggestions for mitigations. These comments will be included as part of the Basic assessment report which will be submitted to the Department of Economic Development, Tourism and Environmental Affairs (EDTEA).

I&APs may forward their written comments along with their contact details within 14 days from receiving the document to Phumzile Lembede. Postal address; P. O. Box 101672, Meerensee, Tel: 035 789 0632, Cell: (078) 2849 332, Fax: 086 577 5220, email: info@emveloconsultants.co.za.

APPENDIX A (LOCALITY MAP)

Proposed Development Site : Ethafeni Locality





Emvelo Quality and Environmental Consultant (PTY) Ltd

Promenade Building, 1st Floor, Unit D2, 24 Lira Link CBD,
Richards Bay, 3900.

REGISTRATION AND COMMENT FORM

EIA Process for the Proposed Construction Of Ethafeni Gravel Access Road, Within The Jurisdiction Of uMlalazi Local Municipality, King Cetshwayo District, Kwazulu-Natal.

I wish to register as an interested and affected party and/ or bring to the attention Emvelo Consultant the following information.

<u>Personal Information</u>	
Name and Surname	
Company /organization	
Physical Address	
<u>Postal address</u>	
<u>Telephone:</u>	<u>Cell:</u>
Email:	
<u>Comments</u>	

Signature

Date