

APPLICATION FOR ENVIRONMENTAL AUTORIZATION: PROPOSED CONSTRUCTION OF THE ROUTE 7 TRUCK DEPOT ON HOLDINGS 174 AND 175 ELOFF SMALL HOLDINGS



DELMAS LOCAL MUNICIPALITY, MPUMALANGA PROVINCE
EIA REF: 17/2/3 N-62
JUNE 2011



1. INTRODUCTION

The applicant (Route 7 Trading 105CC) has initiated an Environmental Authorization process for the proposed construction of a truck depot for the purpose of storage, servicing and washing of Route 7 trucks on Holdings 174 and 175 Eloff Small Holdings, Extension I.R., Delmas, Mpumalanga.

2. LEGAL REQUIREMENTS

In accordance with the regulations published in Government Notice R 543 and R 546 of 18 June 2010, in terms of section 24D of the National Environmental Management Act (Act No. 107 of 1998), the developer is required to carry out a Basic Environmental Assessment for the following activities:

GNR 544 of 18 June 2010 (Basic Assessment):

Activity 23: The transformation of undeveloped, vacant or derelict land to –

- i. residential, retail, commercial, recreational, industrial or institutional use, inside an urban area, and where the total area to be transformed is 5 hectares or more, but less than 20 hectares, or
- ii. residential, retail, commercial, recreational, industrial or institutional use, outside an urban area and where the total area to be transformed is bigger than 1 hectare but less than 20 hectares; -
except where such transformation takes place for linear activities.

Activity 24: The transformation of land bigger than 1000 square metres in size, to residential, retail, commercial, industrial or institutional use, where, at the time of the coming into effect of this Schedule such land was zoned open space, conservation or had an equivalent zoning.

GNR 546 of 18 June 2010 (Basic Assessment):

Activities 10: The construction of facilities or infrastructure for the storage, or storage and handling of a dangerous good, where such storage occurs in containers with a combined capacity of 30 but not exceeding 80 cubic metres.

- i. In an estuary
- ii. Outside urban areas, in:
 - (aa) A protected area identified in terms of NEMPAA, excluding conservancies;
 - (bb) National Protected Area Expansion Strategy Focus area;
 - (cc) Sensitive areas as identified in an environmental management framework as contemplated in chapter 5 of the Act and as adopted by the competent authority;
 - (dd) Sites or areas identified in terms of an International Convention;
 - (ee) Critical biodiversity areas as identified in systematic biodiversity plans adopted by the competent authority or in bioregional plans;
 - (ff) Core areas in biosphere reserves;

(gg) Areas within 10 kilometres from national parks or world heritage sites or 5 kilometres from any other protected area identified in terms of NEMPAA or from the core areas of a biosphere reserve;

(hh) Areas seaward of the development setback line or within 1 kilometre from the high-water mark of the sea if no such development setback line is determined;

(ii) Areas on the watercourse side of a development setback line or within 100 metres from the edge of a watercourse where no such setback line has been determined;

(jj) Within 500 metres of an estuary

iii. In urban areas:

(aa) Areas zoned for use as public open space;

(bb) Areas designated for conservation use in Spatial Development Frameworks adopted by the competent authority or zoned for a conservation purpose;

(cc) Within 500 metres of an estuary.

3. ENVIRONMENTAL ASSESSMENT PRACTITIONER

Shangoni Management Services (Pty) Ltd was appointed by the applicant as the independent Environmental Assessment Practitioner (EAP) to undertake the Environmental Impact Assessment process.

4. SITE DESCRIPTION

4.1 Property Description: Holdings 174 and 175 Eloff Small Holdings Extension I.R., Delmas, Mpumalanga.

4.2 Location: The project site is located on Road no 10, east from Delmas in the Eloff Small Holdings Area.

5. DESCRIPTION OF PROPOSED ACTIVITY

The proposed Route 7 truck depot will entail the following: A 24/7 truck depot will be constructed for the storage, servicing and washing of Route 7 trucks. To accommodate these activities, a wash bay, workshop and office will be constructed. An additional 40 000 litre bunded diesel tank will be placed on the surface of the site for the re-fuelling of Route 7 trucks.

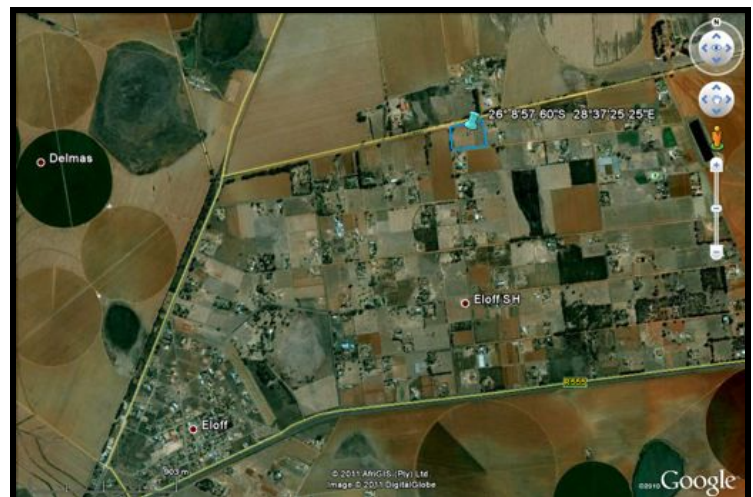


Figure 1: Location of the proposed construction project



Online Participation: For online registrations, submission of comments and Review of project related documentation

1. Go to www.shangoni.co.za
2. Click on public participation
3. Select project of interest
4. Register as a stakeholder under registration
5. Submit comment/concern electronically
6. All available project related documentation available for perusal throughout the process
7. As project progresses notices will be placed under the notices/updates tab
8. If you are registered you will receive an e-mail to inform you of any new developments on the project as well as to when the report are available for public review.

Contact Details of EAP

Your participation is important for the process. If you would like us to add you to our database of stakeholders who wish to participate in this process, or should you have any queries regarding the process or comments about the proposed development, please contact Miss Isabel Hough (details below) before or on 15 July 2011.

Contact details:

Shangoni Management Services (Pty) Ltd

Postal address:

Postnet Suite 74726
Lynnwood Ridge
Pretoria,
0040

Tel: 012 807 7036

Cell: 079 534 4303

Fax: 012 807 1014

Cell: 079 534 4303

Fax to e-mail: **086 578 9670**

Email: isabelhough@shangoni.co.za

For online participation go to www.shangoni.co.za and click on Public Participation.



5. PUBLIC PARTICIPATION PROCESS

Public participation is an integral part of the Basic Assessment process, and will include the following components:

First part of the Public Participation:

The primary purpose of this phase is to give potential interested and affected parties an opportunity to register as an interested or affected party and submit comments and concerns. These comments and concerns are included in the Basic Assessment report.

Comment on the Basic Assessment Report:

The Basic Assessment Report will be made available to registered I&AP's, to provide an opportunity to comment in writing on this document when concluded before it is submitted to the competent authority. All comments received will be included in a comments and response report compiled by the Environmental Assessment Practitioner. This report will describe the issue raised, the date it was raised and by whom, and how the issue will be, or has been dealt with.

The comments that are received on the Basic Assessment Report are included into the final report prior to submission to the Mpumalanga Department of Economic Development, Environment and Tourism (DEDET).