



Emvelo Quality and Environmental Consultant (PTY) Ltd

Promenade Building, 1st Floor, Unit D2, 24 Lira Link CBD,

Richards Bay, 3900. P.O. Box 101672, Meerensee, 3901

Tel: 035 789 0632 1 8760, Cell: (078) 2849 332; Fax: 086 577 5220

BACKGROUND INFORMATION DOCUMENT

**THE PROPOSED DEVELOPMENT OF
EMAZIBUKWENI CULVERT CAUSEWAY WITHIN
UMUZIWABANTU LOCAL MUNICIPALITY, UGU
DISTRICT, KWAZULU-NATAL**

August 2020

Prepared by:

**Emvelo Quality and Environmental
Consultant (PTY) Ltd**

On Behalf of



Umuziwabantu local municipality

INTRODUCTION

The Umuziwabantu local municipality intends to construct a low-level bridge in the Emazibukweni community, forming a causeway that will link ward 7 to ward 9. Consequently, an environmental impact assessment (EIA) has commenced, assisting the developer in identifying all potential adverse environmental consequences of the project, their extent, significance and to ensure that the environmental management requirements are adequately implemented.

The purpose of this Background information document is to provide you, as an Interested or Affected Party (I&AP), with a brief description of the EIA process to be undertaken and to obtain comments and contributions from I&AP's with regards to the potential impacts to the environment by the proposed project.

PROJECT DESCRIPTION

The proposed development includes the construction of a 1km long and 6m width causeway, which will be 500m on either side from the edge of the river. Moreover, a bridge that is 14 m long, with a width of 6m and a height of 2.35 m will be built. Thus, total development footprint is 6086 m² (where 470 m² falls within 32 meters of the watercourse).

However, there is an existing, smaller bridge that is currently being used for crossing the stream. The existing culvert is 10m long, with a width of 5m and a height of 1m.

STUDY AREA

The site co-ordinates are as follows;
Start; 30°38'55.01" S; 29°44'18.82" E
Mid (Bridge); 30°38'39.52"S; 29°44'14.84" E
End; 30°38'26.52" S; 29°44'25.30" E

WHAT IS AN ENVIRONMENTAL IMPACT ASSESSMENT?

An EIA is an effective planning and decision-making tool, which allows for the identification of potential adverse environmental consequences of a proposed project, and its management through the planning process.

In terms of the National Environmental Management Act, 1998 (Act No.107 of 1998), as read with the Environmental Impact Assessment (EIA) Regulations of 2014 as amended in 2017, an Environmental Authorization must be obtained from the relevant decision-making authority, the Department of Economic Development, Tourism and Environmental Affairs (DEDTEA), prior to the commencement of any of the listed activities that may result in potential negative impacts on the environment. Thus, an environmental impact assessment is required. A Basic assessment

that includes the public participation process will be performed.

ENVIRONMENTAL IMPACT ASSESSMENT PROCESS

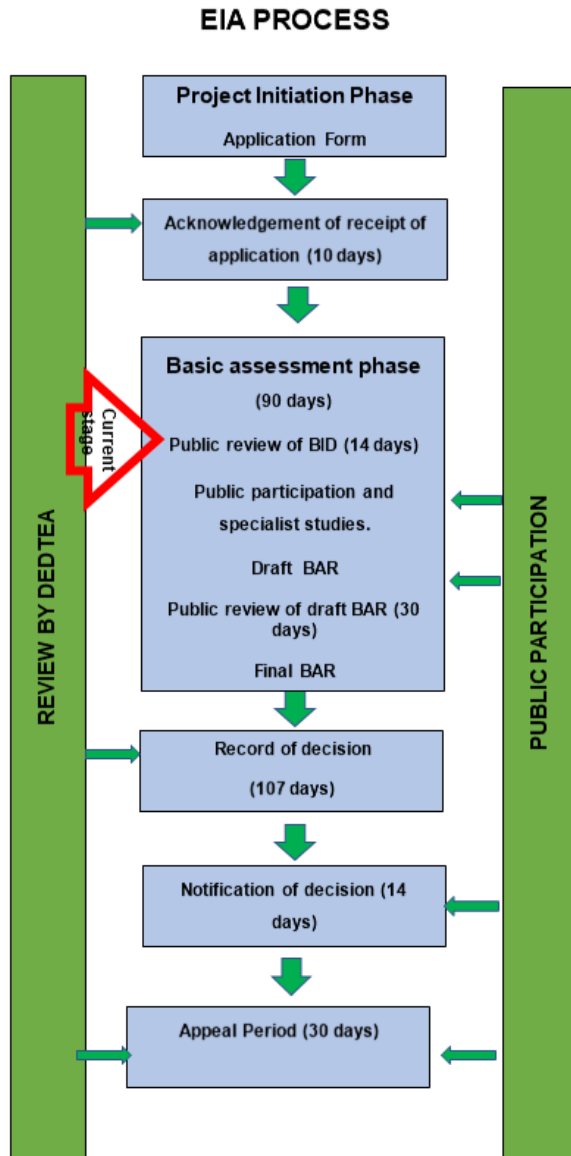


Figure 1: EIA process

In terms of the Environmental Impact Assessment (EIA) regulations, an independent Environmental Assessment

Practitioner must be appointed to conduct the EIA. Therefore, Emvelo Consultant has been appointed to conduct the EIA. Emvelo will identify and assess the potential environmental impacts associated with the proposed activity by conducting an objective and independent EIA in which all the relevant information and opinions of Interested and Affected Parties (IAPs) will be collected and passed on to the Department of Economic Development Tourism and Environmental Affairs (EDTEA). In this way, an informed decision-making process can take place.

LISTED ACTIVITIES TRIGGERED BY THIS PROJECT

The proposed project triggers the following listed activities in Listing Notices;

Table 1: Listed Activities

LISTING NOTICE	ACTIVITIES	DESCRIPTION OF ACTIVITY
1	Activity 12	The development of infrastructure or structures with a physical footprint of 100 square metres or more; (c) within 32m of a watercourse, measured from the edge of a watercourse.

LISTING NOTICE	ACTIVITIES	DESCRIPTION OF ACTIVITY
1	Activity 19	The infilling or deposition of any material of more than 10m ³ into or the dredging, excavation, removal of soil, sand, shell, shell grit, pebbles or rock of more than 10m ³ from a watercourse.

WHAT IS PUBLIC PARTICIPATION?

Public participation is the process that promotes information sharing, consultation and active involvement amongst stakeholders and all interested and affected parties.

During the Public Participation Process, input from the proponent, technical experts, government authorities and the general public will be gathered to result in a better understanding of the project for all involved thus ensuring informed decision-making throughout the process.

REGISTRATION OF INTERESTED AND AFFECTED PARTIES.

Any person, company, authority or other entity that might be directly or indirectly affected by the proposed activity is invited to register as an I&AP, in order to assist the EAP in identifying possible environmental, economic and social impacts of the proposed development and to make suggestions for mitigations. These comments will be included as part of the Basic assessment report which will be submitted to the Department of Economic Development, Tourism and Environmental Affairs (EDTEA) for consideration.

I&APs may forward their written comments along with their contact details within 14 days from receiving the document to;

Phumzile Lembede.

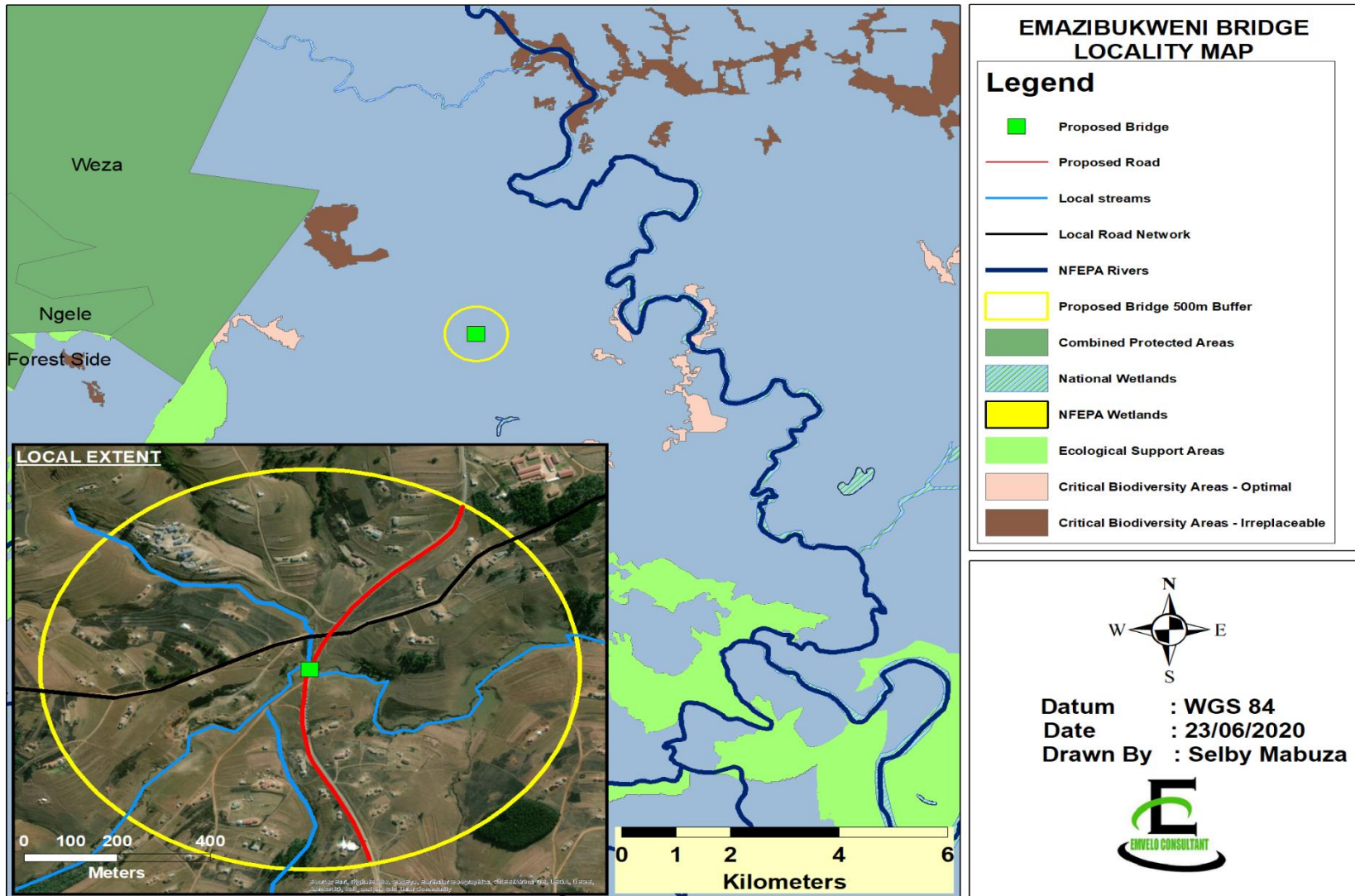
Postal address; P. O. Box 101672.
Meerensee, 3901

Tel: 035 789 0632,

Fax: 086 577 5220,

email: info@emveloconsultants.co.za.

**APPENDIX A
(LOCALITY MAP)**



Signature

Date