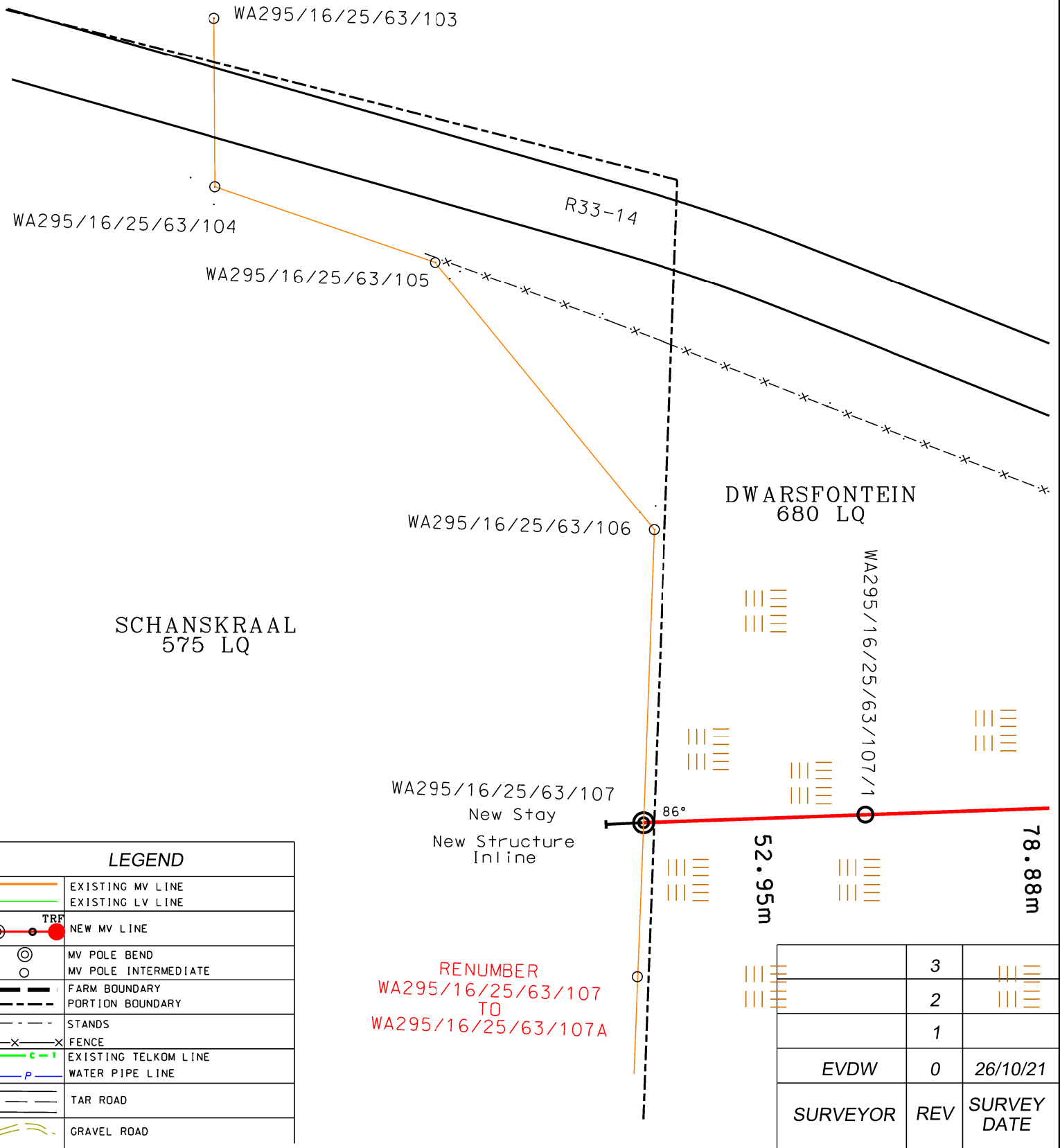


Reference	CAD-Line Survey-LOU
Effective Date	26/10/2019
Revision	00



RENUMBER
 WA295/16/25/63/107
 TO
 WA295/16/25/63/107A

	3	
	2	
	1	
EVDW	0	26/10/21
SURVEYOR	REV	SURVEY DATE

LEGEND	
	EXISTING MV LINE
	EXISTING LV LINE
	NEW MV LINE
	MV POLE BEND
	MV POLE INTERMEDIATE
	FARM BOUNDARY
	PORTION BOUNDARY
	STANDS
	FENCE
	EXISTING TELKOM LINE
	WATER PIPE LINE
	TAR ROAD
	GRAVEL ROAD

FEEDER: WATERBERG/AFGUNS 22KV
PROJECT NO: TBA
CONDUCTOR: MINK
LENGTH OF LINE: 2221.83m
SURVEYOR: E V/D WESTHUIZEN
DRAUGHTSPERSON: E V/D WESTHUIZEN

CUSTOMER: VODACOM BANKFONTEIN
PROPERTY: PTN 1 BANKFONTEIN 686 LQ
CONTACT DETAILS TBA
SCALE: 1 : 1250 (A4)
PAGE: 1 of 9

N

THIS DRAWING IS THE PROPERTY OF Eskom
 Disclaimer: Eskom is not responsible for any errors displayed on this drawing

DWARSFONTEIN
680 LQ

DWARSFONTEIN
680 LQ

R33-14

Marjia

New Stay



WA295/16/25/63/107/3
2xNew Struts

84.48m

WA295/16/25/63/107/5

84.49m

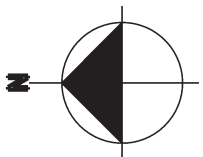
WA295/16/25/63/107/4

72.74m

77.76m

WA295/16/25/63/107/2

78.88m



SCALE 1:1250
PAGE 2 of 9



DWARSFONTEIN
680 LQ

DWARSFONTEIN
680 LQ

R33-14

Marula

Marula

Marula



158°

WA295/16/25/63/107/8
3xNew Stays

66.34m

84.46m

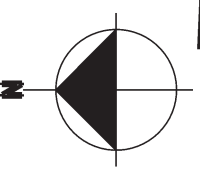
WA295/16/25/63/107/7

84.49m

WA295/16/25/63/107/6

84.48m

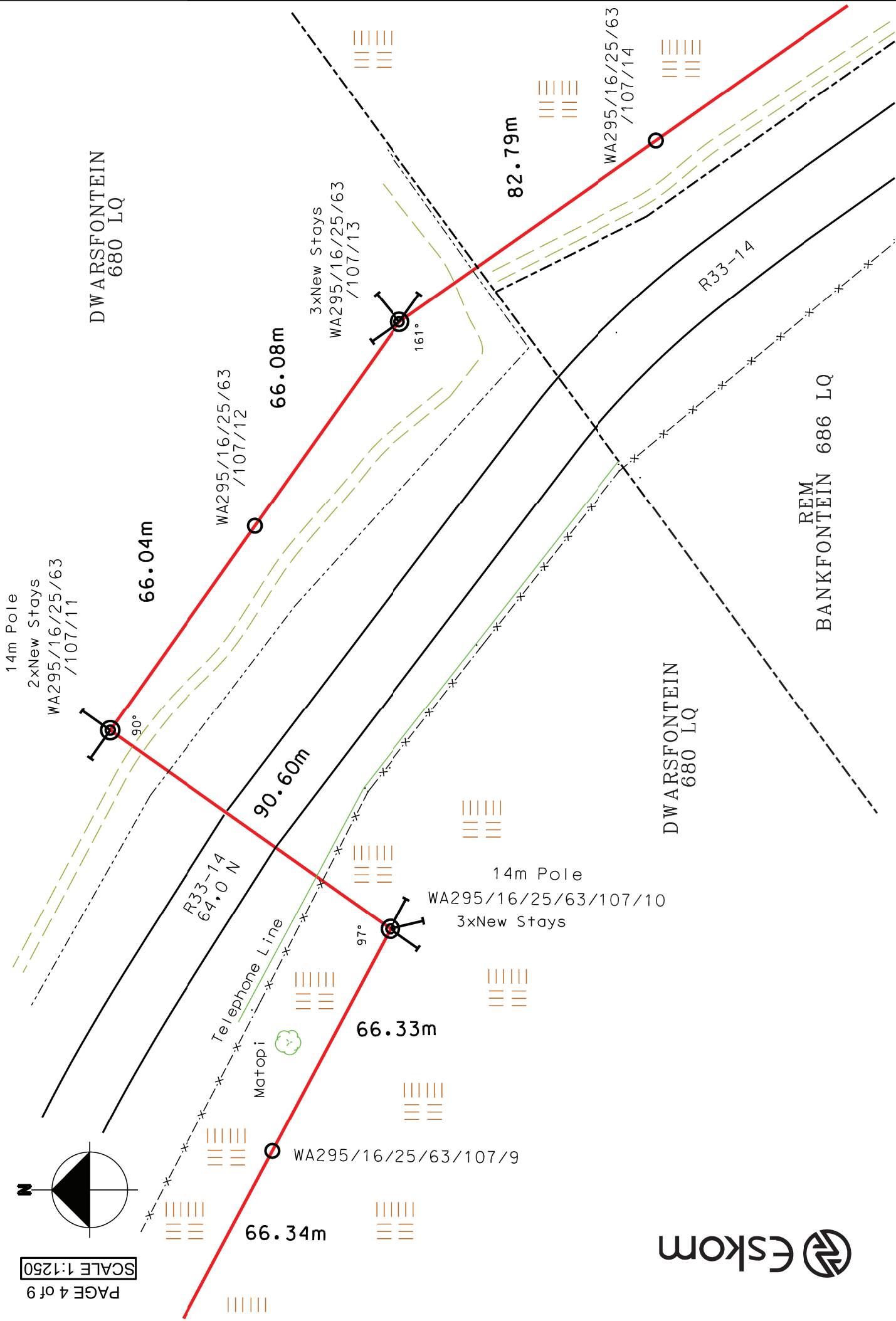
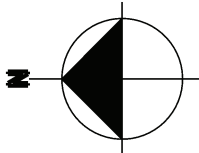
WA295/16/25/63/107/5

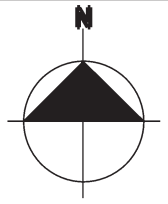


SCALE 1:1250

PAGE 3 of 9







WA295/16/25/63
/107/15

3xNew Stays

177°

PTN 1
BANKFONTEIN 686 LQ

74.06m

WA295/16/25/63
/107/16

78.28m

WA295/16/25/63
/107/17

67.02m

WA295/16/25/63
/107/18

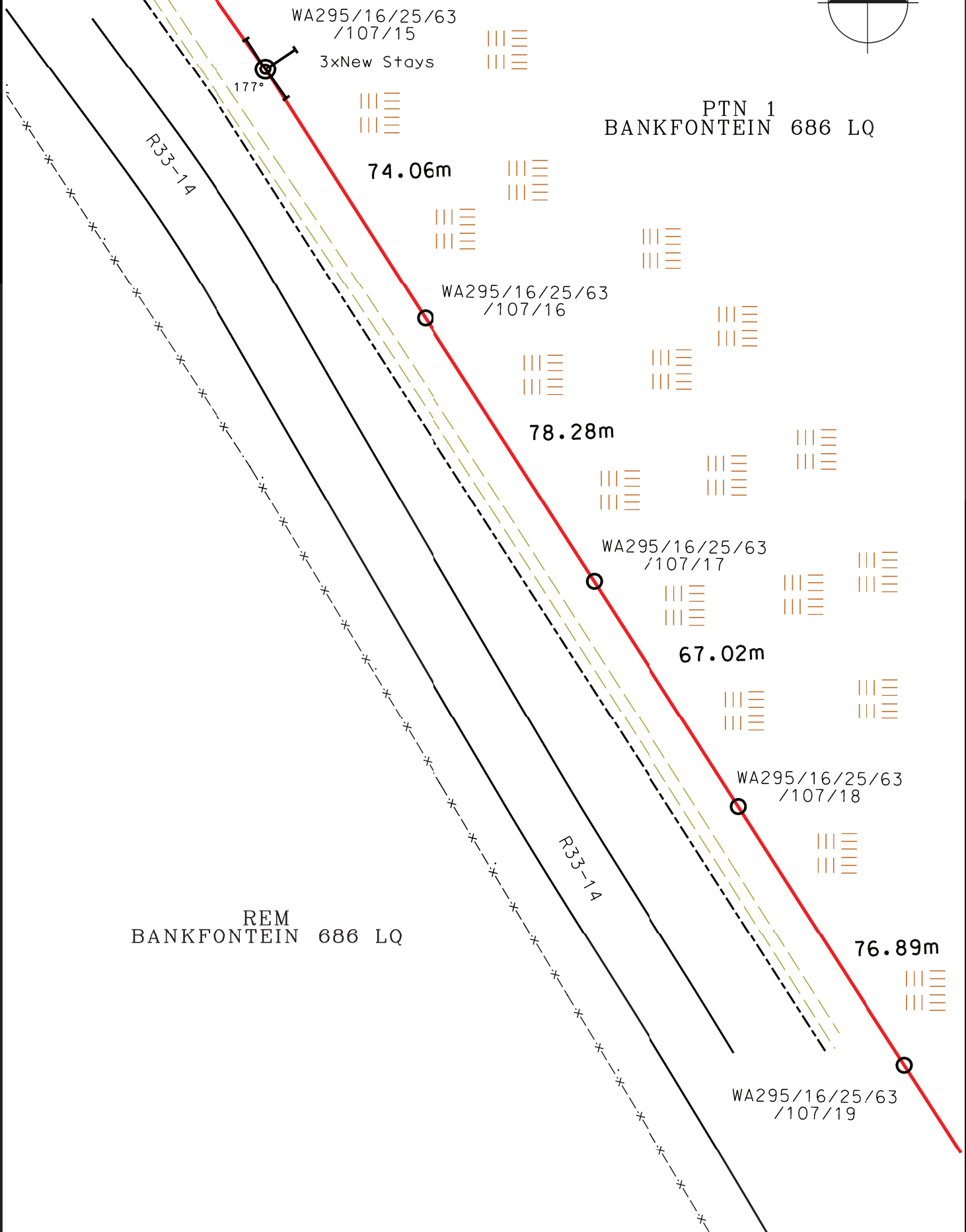
76.89m

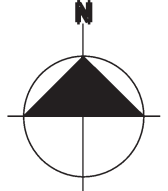
WA295/16/25/63
/107/19

R33-14

R33-14

REM
BANKFONTEIN 686 LQ





PTN 1
BANKFONTEIN 686 LQ

REM
BANKFONTEIN 686 LQ

76.89m

WA295/16/25/63
/107/19

74.07m

WA295/16/25/63
/107/20

74.06m

WA295/16/25/63
/107/21

76.59m

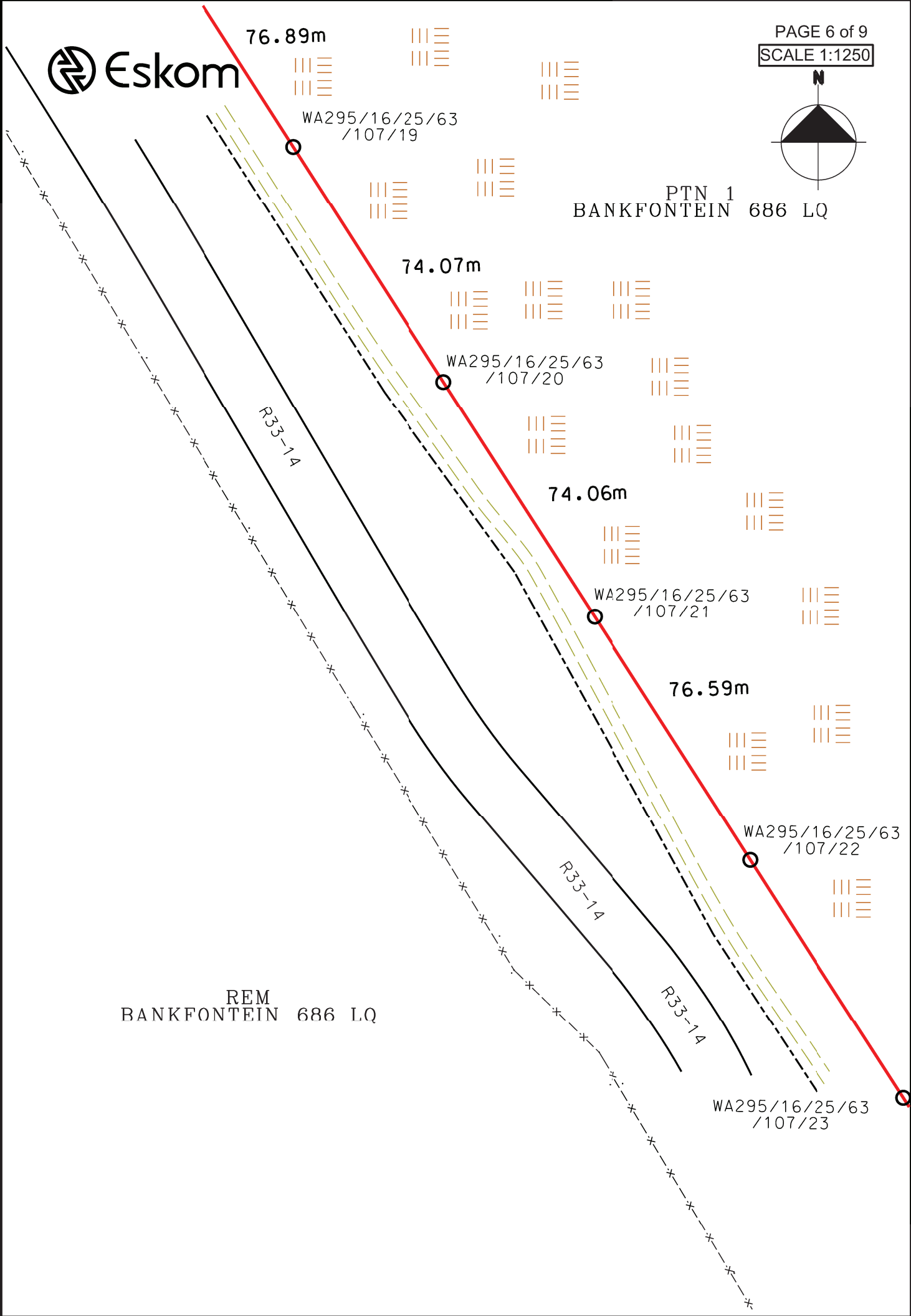
WA295/16/25/63
/107/22

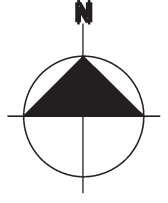
WA295/16/25/63
/107/23

R33-1A

R33-1A

R33-1A





77.70m

12m Pole
WA295/16/25/63
/107/23

67.89m

12m Pole
WA295/16/25/63
/107/24

74.06m

WA295/16/25/63
/107/25
3xNew Stays

175°

56.39m

WA295/16/25/63
/107/26

56.37m

174°

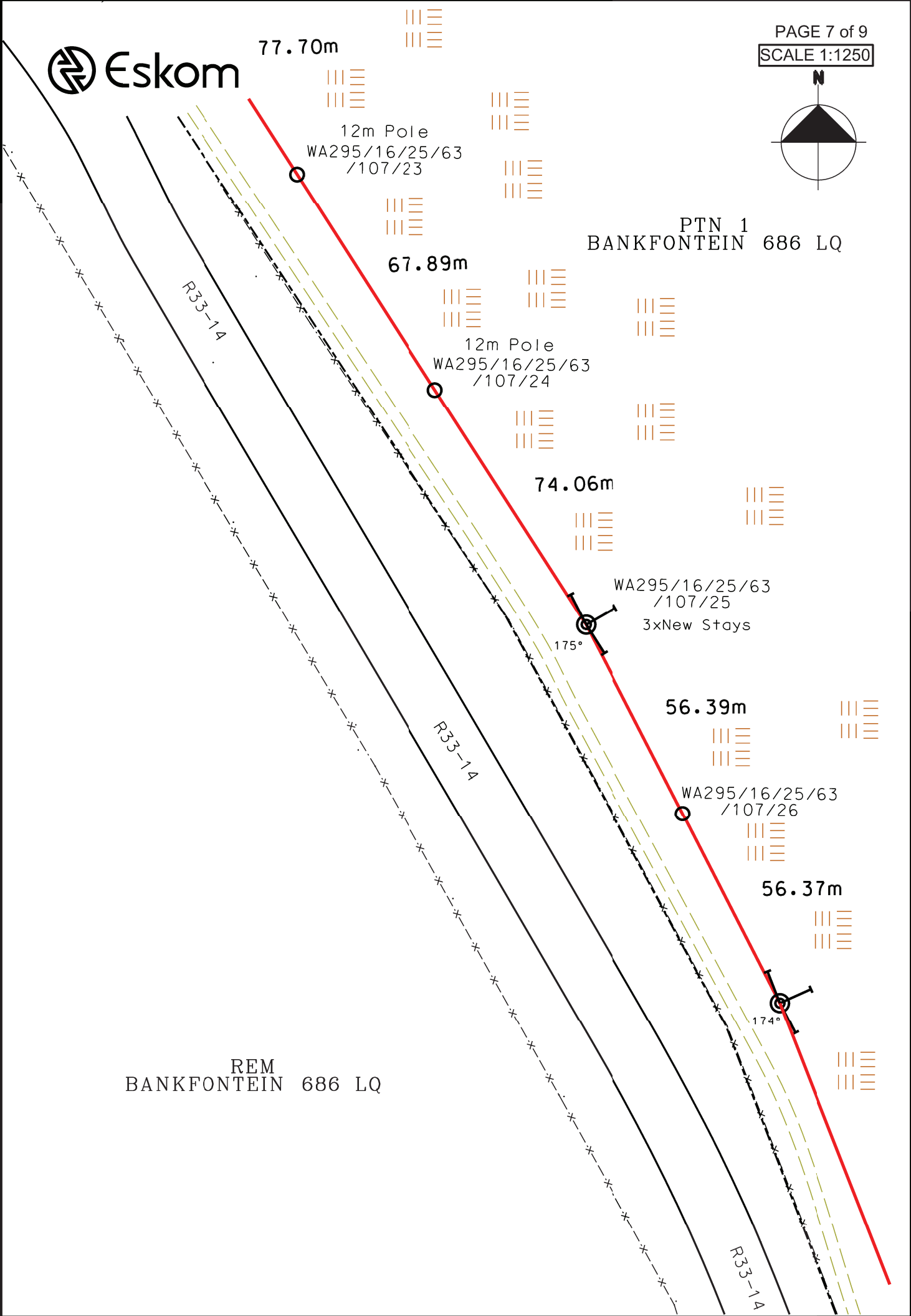
REM
BANKFONTEIN 686 LQ

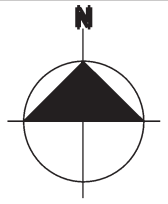
PTN 1
BANKFONTEIN 686 LQ

R33-14

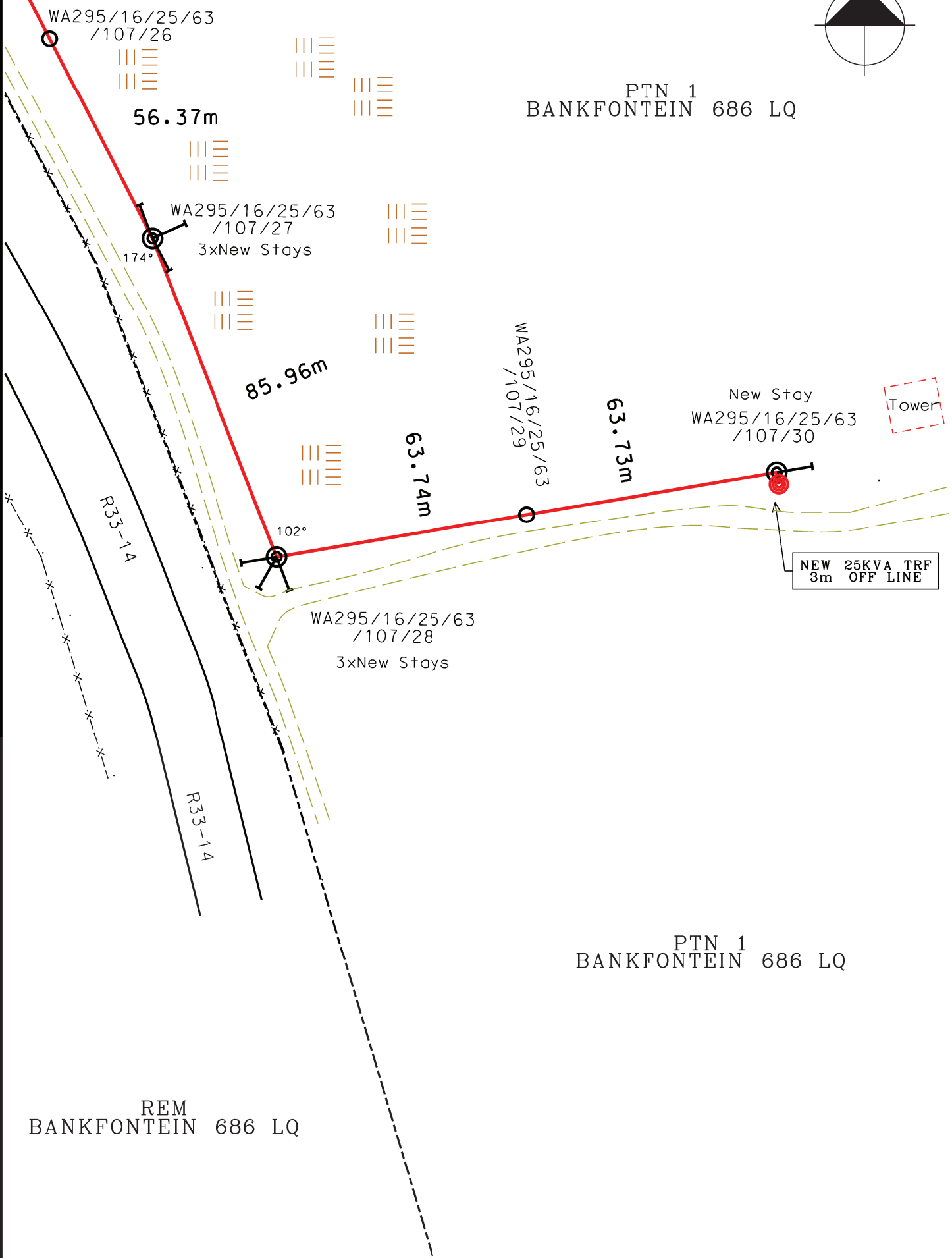
R33-14

R33-14





PTN 1
BANKFONTEIN 686 LQ



REM
BANKFONTEIN 686 LQ

PTN 1
BANKFONTEIN 686 LQ

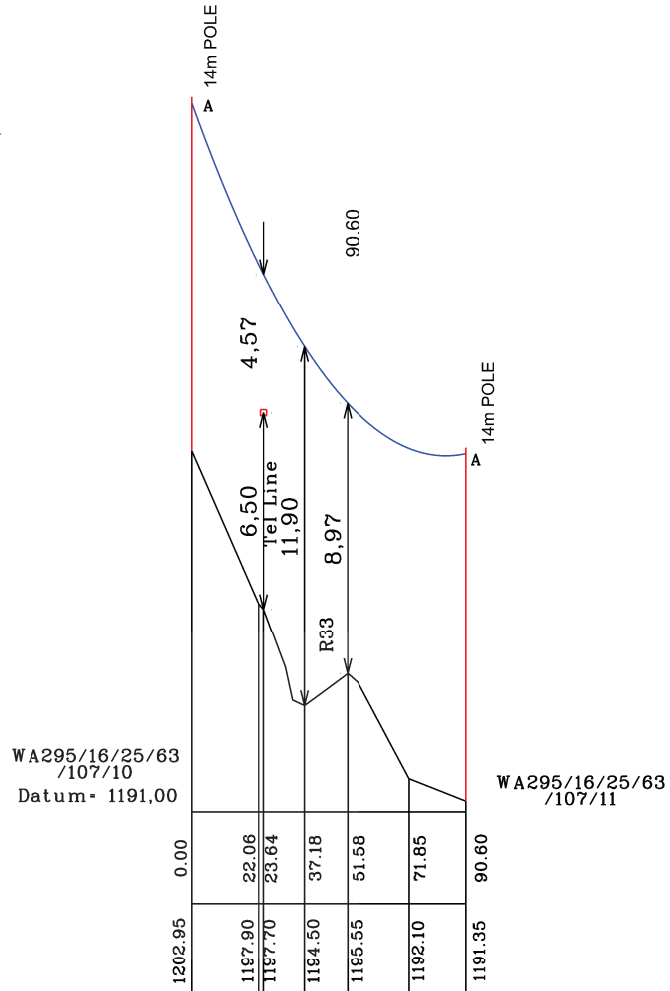
POLOKWANE LAND DEVELOPMENT

PROFILE OF :R33 ROAD CROSSING
 FEEDER :WATERBERG/AFGUNS 22KV
 PROJECT NO : TBA
 CLIENT :VODACOM BANKFONTEIN
 COMPILATION NO : 2530
 SCALE HOR. 1 : 2500
 VERT. 1 : 250

CONDUCTOR: MINK
 SURVEYOR : TSHUKUDU SURVEY'S
 WARM CURVE : 35 DEG
 ATTACH. HEIGHT :
 A= 11.6

CLEARANCE BETWEEN
 R33 ROAD AND NEW
 CONDUCTOR IS 8,97m
 CLEARANCE BETWEEN
 TELEPHONE LINE AND NEW
 CONDUCTOR IS 4,57m

TEMPLATED BY :
 E VD WESTHUIZEN
 DATE :
 26/10/2021



WA295/16/25/63
 /107/10
 Datum= 1191,00

WA295/16/25/63
 /107/11

