

Sikhululiwe Village Acces Road Project: Vegetation and Terrestrial Ecosystems

29°45'0"E

29°46'0"E

29°47'0"E

29°48'0"E

25°46'0"S

25°46'0"S

25°47'0"S

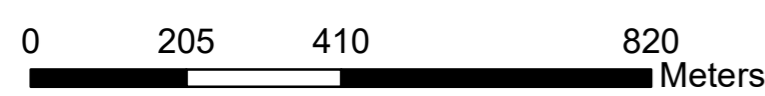
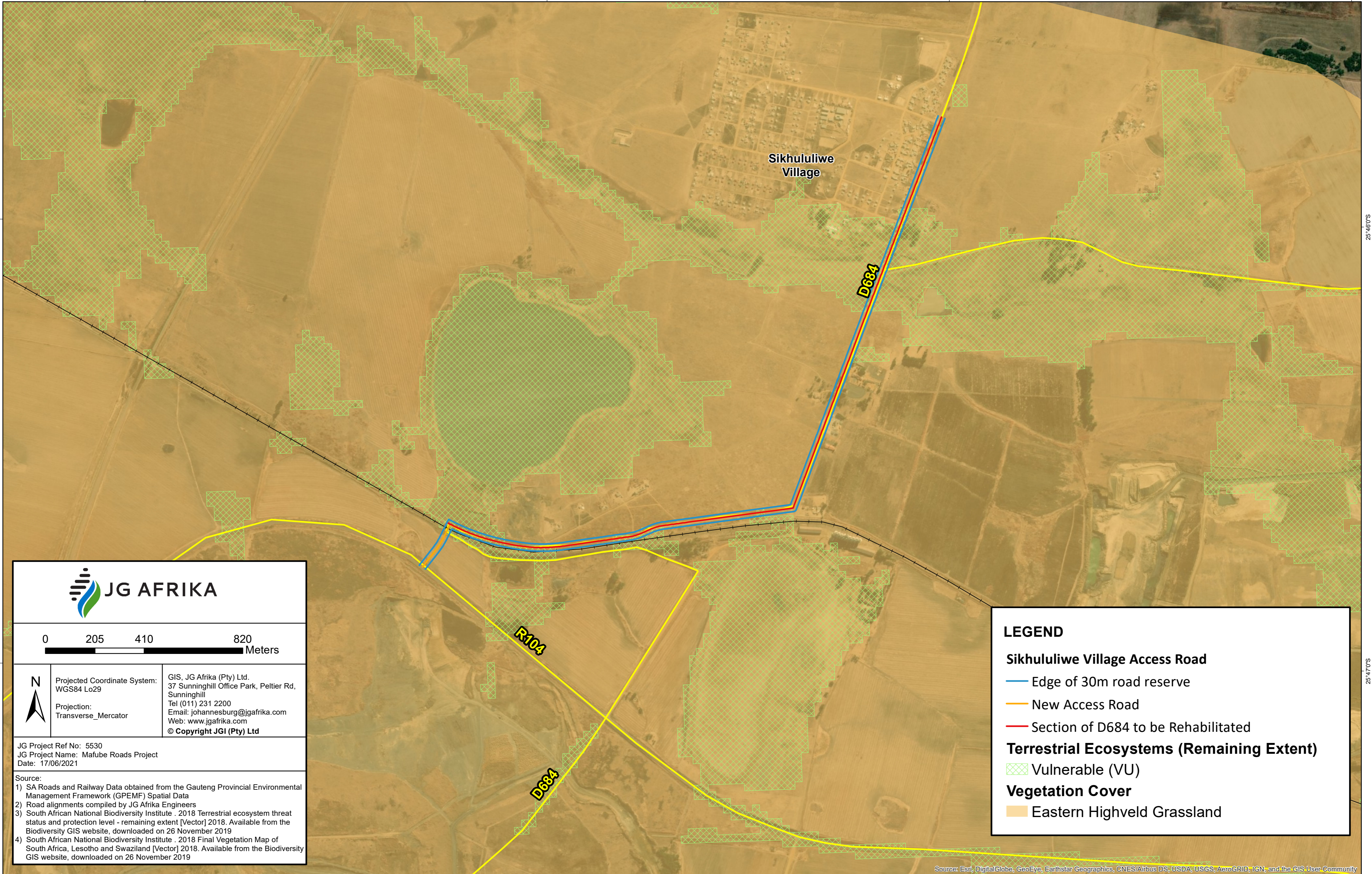
25°47'0"S

29°45'0"E

29°46'0"E

29°47'0"E

29°48'0"E



N
 Projected Coordinate System: WGS84 Lo29
 Projection: Transverse_Mercator
 GIS, JG Afrika (Pty) Ltd.
 37 Sunninghill Office Park, Pettier Rd, Sunninghill
 Tel (011) 231 2200
 Email: johannesburg@jgafrika.com
 Web: www.jgafrika.com
 © Copyright JGI (Pty) Ltd

JG Project Ref No: 5530
 JG Project Name: Mafube Roads Project
 Date: 17/06/2021

- Source:
- 1) SA Roads and Railway Data obtained from the Gauteng Provincial Environmental Management Framework (GPEMF) Spatial Data
 - 2) Road alignments compiled by JG Afrika Engineers
 - 3) South African National Biodiversity Institute . 2018 Terrestrial ecosystem threat status and protection level - remaining extent [Vector] 2018. Available from the Biodiversity GIS website, downloaded on 26 November 2019
 - 4) South African National Biodiversity Institute . 2018 Final Vegetation Map of South Africa, Lesotho and Swaziland [Vector] 2018. Available from the Biodiversity GIS website, downloaded on 26 November 2019

LEGEND

Sikhululiwe Village Access Road

- Edge of 30m road reserve
- New Access Road
- Section of D684 to be Rehabilitated

Terrestrial Ecosystems (Remaining Extent)

- ⊠ Vulnerable (VU)

Vegetation Cover

- Eastern Highveld Grassland

Source: Esri, DigitalGlobe, GeoEye, Earthstar Geographics, CNES/Airbus DS, USDA, USGS, AeroGRID, IGN, and the GIS User Community