

project name

drawing issue slip

DESIGNSCAPE

architects

Proposed Additions and Alterations to Ohlange High School

EMIS NO: 286306

project number

building ID and name

D11.018J

Block 1 - Existing Boys Dorm

Suite 3, Rydall Vale Office Park
3 Rydall Vale Crescent, La Lucia
Durban, 4019

TEL: 031 566 1221 or 031 566 1221
e-Mail: info@dscope.co.za
Website: www.dscope.co.za

Drawing Number	Drawing Name	Revision	Page Size
3.101	Floor plans / Demolition Layouts	02	A1
3.102	Sections / Elevations	02	A1
5.101	Joinery Details Existing Boys Dorm Sheet 1/2	02	A1
5.102	Joinery Details Existing Boys Dorms Sheet 2/2	02	A1
7.101	Door Schedules	02	A1
7.102	Sanitary & Finishes Schedules	01	A1
9.101	General Layouts DWG	01	DWG

issued to

received by

PROJECT MANAGER	X
CONTRACTOR	
CIVIL / STRUCTURAL ENGINEER	X
ELECTRICAL ENGINEER	X
MECHANICAL ENGINEER	X
QUANTITY SURVEYOR	X

CLIENT	X
HARD COPIES	
ELECTRONIC	X

date of issue
Friday, October 16, 2020

NAME: _____

COMPANY: _____

DATE RECEIVED: _____

SIGNED: _____

GENERAL NOTES

GENERAL SPECIFICATION NOTES TO BE READ IN CONJUNCTION WITH STANDARD TRADE PREAMBLES WB 20 TRADE NAMES AS SPECIFIED OR EQUAL APPROVED

WALLS

ALL WALLS ARE COMPLY WITH SANS 10400-K. COROBRIK FBS FACEBRICK WALLS IN STRETCHER BOND WITH RULED JOINTS AND PERPENDS INTERNALLY & EXTERNALLY. COROBRIK COMMONS TO BE USED WHERE TO RECEIVE PLASTER. COROBRIK ENGINEERING BRICKS BELOW GROUND LEVEL IN FOUNDATION WALLS. BRICKFORCE TO ALL COURSE FROM WINDOW HEAD TO UNDERGROUND WALL PLATE. GALVANISED CRIMP WIRE WALL TIES (7 PER SQUARE METRE - LAD STAGGERED). EXTERNAL FACE OF INNER SKIN TO BE BAGGED WASHED PAINTED BITUMEN PAINT.

INTERNAL PLASTER AND PAINT

INTERNAL PLASTER TO BE 13 TO 16mm THICK CEMENT/SAND RATIO OF 1:5. PLASTER SEALED. 1 UNDERCOAT, 2 TOP COATS. COLOUR TO BE APPROVED BY ARCHITECT. PREPARE & RE-PANT EXISTING INTERNAL WALLS. REFER TO FINISHES SCHEDULE AND PAINT SPECIFICATIONS.

AIR BRICKS

229 X 152MM TERRA-COTTA VERMIN PROOFED AIR-BRICKS AS INDICATED ON GABLE ELEVATIONS AND BUILT INTO BRICK BEAM FILLING AT APPROX. 1265MM CC.

SURFACE BED

POWER FLOATED CONCRETE SLAB (25MPa) REINFORCED WITH MESH, REF. 193, SET 25MM ABOVE 250 MICRON GUNPLAS USB GREEN DPC ON 50mm TREATED AND RAMMED RIVER SAND ON CLEAN EARTH FILL IN LAYERS NOT EXCEEDING 150mm, TO BE WELL WATERED AND COMPACTED TO 90% MOD AASHTO. SOIL TO BE POISONED IN ACCORDANCE WITH SABS 1165. CERTIFICATE MUST BE PROVIDED.

WALKWAYS

100mm THICK CONCRETE SLAB (20 MPa) REINFORCED WITH MESH, REF. 193, SET 25mm ABOVE 250 MICRON GUNPLAS USB GREEN DPC ON 50mm TREATED AND RAMMED RIVER SAND ON FILL COMPACTED TO 95% MOD AASHTO. SLAB LAID WITH 25mm FALL AWAY FROM WALL AND AND IN ALTERNATE PANELS OF 2000mm, CONTROL JOINTS SEALED WITH 10MM POLYSULPHIDE SEALANT WITH BACKING BACKING STRIP AND SOFTBOARD CONCRETE TO ENGINEERS DETAIL.

CEILING - PLASTERBOARD

1x LAYER 8.4MM RHINOBOARD CEILING WITH H PROFILE METAL JOINT STRIPS CONSISTING OF SABS APPROVED SA PINE 30X30MM TREATED BRANDING FIXED AT 400MM CENTRES IN ONE DIRECTION ONTO WHICH RHINOBOARD IS FIXED, PRINTED SIDE UP, AT RIGHT ANGLES TO THE BRANDERS, USING GRABBER SCREWS 32MM AT MAXIMUM 1500MM CENTRES WITH TRUSSES AT MAX. 1200MM CENTRES. 12mm WIDE H-PROFILE METAL COVER STRIPS TO JOINTS, 75 x 20mm SOFTWOOD CORNICE SPIKED TO WALL. SCREWS HEADS TO BE PRIME AND FILLED WITH POLY FILLER. SAND, APPLY ONE PRIMER COAT AND TWO EVEN TOP COATS PVA. INSTALL IN ACCORDANCE WITH THE MANUFACTURERS DETAIL AND SPECIFICATION.

FOUNDATIONS

ALL FOUNDATIONS AND STRUCTURAL WORK TO ENGINEERS DETAIL. CONCRETE STRIP FOOTINGS TO SIT ON NATURAL GROUND. HARDBURNT CLAY BRICK FOUNDATION WALLS TO BE MINIMUM 600MM DEEP BELOW THE NATURAL GROUND LINE. ALL TRENCHES TO BE SPRAYED WITH ANT GUARD.

ROOF SHEETING

GLOBAL ROOFING SOLUTIONS 762MM COVER CORRUGATED S-PROFILE ROLL-FORMED IN CONTINUOUS LENGTHS FROM 0.8MM THICK COLOUR TECH G4 ALUMINIUM ROOF SHEETING, COLOURED COATING FRONT AND BACK, USING HEX FLANGE HEAD + EPOM SEAL SELF DRILLING TYPE 17 DRILL POINT, NO. 12-11 X 65MM LONG FASTENERS. PURLIN FIXED TO FIRST, FOURTH AND EIGHTH CREST OF EACH SHEET AND AT ALL CRESTS AT SHEET ENDS. ALL IN ACCORDANCE WITH THE MANUFACTURERS SPECIFICATIONS BY A GRS APPROVED CONTRACTOR. POLYCOLOURED AT RIDGE FLASHINGS AND MASTIC SEALANT TO ALL SIDE LAPS. DETERMINE DIRECTION OF WIND BEFORE LAYING SHEETS. SHEETS TO PROJECT A MINIMUM OF 50MM BEYOND PURLINS AT EAVES. SHEETS TO BE FIXED TO 76X50MM TIMBER INTERMEDIATE PURLINS AT MAX 900MM CENTRES ON TRUSSES AT MAX OF 1200MM CRS TO BE STRAPPED TO 114 X 38MM WALLPLATE WITH 30 X 1.6 X 1600MM LONG GALVANISED HOOP IRON STRAPS BUILT INTO COURSING AND ON SISATION LAR 405 UNDERLAY OVER TRUSSES AND UNDER PURLINS ON STRAINING WIRES ON TO PRE-FABRICATED KING POST TRUSSES WITH 38X152MM RAFTERS (GRADE 8) AND 38X228MM TIE BEAMS (GRADE 8), 38X152MM INTERMEDIATE MEMBERS. HURRICANE CLIPS BE USED EXTERNALLY TO SECURE PURLINS TO TRUSSES AT EAVES OVERHANGS. DOUBLE WOUND 2.5MM DIAMETER GALVANISED WIRE TO SECURE PURLINS INTERNALLY. ALL EXPOSED ROOF TIMBER TO BE PAINTED WITH 2 COATS OF ABE PRONOVITE. BEFORE FIXING OF ROOF SHEETS, FASCIAS AND BARGEBOARDS. ROOF DESIGN AS PER ROOF ENGINEERS DETAILS. ROOF BY GRS OR SIMILAR APPROVED.

BARGE AND FASCIA BOARDS

EVERITE NUTEC FIBRE CEMENT SOCKETLESS BARGE BOARDS (PRODUCT NO. 521-731) 200 x 80mm WITH H-PROFILE ALUMINIUM BARGE BOARD JOINTERS (PROD. NO. 685-187). DRILL FOR AND FIX WITH HOT DIPPED GALVANISED SCREWS AND WASHERS. 76 x 50mm TRIMMER BATTEN FIXED TO UNDERSIDE OF PURLIN ENDS FOR BARGE BOARD FIXING. EVERITE NUTEC MEDIUM DENSITY FIBRE CEMENT FASCIAS (PRODUCT NO. 041-202) 12 x 225mm WITH H-PROFILE ALUMINIUM FASCIA BOARD JOINTERS (PROD. NO. 685-195). DRILL FOR AND FIX WITH HOT DIPPED GALVANISED SCREWS AND WASHERS. INSTALLATION TO COMPLY WITH MANUFACTURERS STANDARDS AND DETAILS.

WATERTANK

500L 'JUDO' OR EQUAL APPROVED WATER TANK EMBEDDED IN FACE BRICK STAND INCLUDING ACCESS LID WITH HOLE AND SUITABLE OVERLY PIPE, TIED DOWN WITH TWO CHAINS ENCASED IN HOSE PIPE FIXED TO HOOKS CAST INTO CONCRETE.

CONCRETE APRON

75mm THICK 20 MPa CONCRETE APRONS LAID TO A FALL OF 1:200 TO RELIEF POINTS. CAST ALTERNATE PANELS WITH A CONTROL JOINTS EVERY 2000mm, ON FILL COMPACTED TO MOD AASHTO 95%. CONTROL JOINTS TO BE SEALED WITH 10mm POLYSULPHIDE.

GUTTERS AND DOWNPIPES

SEAMLESS ALUMINIUM OGE GUTTERS WITH BAKED ENAMEL FINISH AND FIXED TO SUPPLIERS SPECIFICATIONS. WITH 100 x 75mm FLUTED ALUMINIUM DOWNPIPES WITH BAKED ENAMEL FINISH AND FIXED TO SUPPLIERS SPECIFICATION

SILLS

EXTERNAL SILLS TO BE ROLLER COURSE FBA FACE BRICK SET AT AN ANGLE OF 15 DEGREES. 375 MICRON EMBOSSED DAM PROOF MEMBRANE BELOW ALL SILLS. INTERNAL SILLS TO BE EVERITE NUTEC FIBRE CEMENT (PRODUCT NO. 031-509) COMPLETE WITH FIXING LUGS AND SELF TAPPING SCREWS.

DOORS

ALL DOORS AS PER DOOR SCHEDULE. DOORS TO BE SABS APPROVED AND OF A SUPERIOR QUALITY AND APPROVED BY ARCHITECT. ALL DIMENSIONS AND LEVELS TO BE CHECKED ON SITE AND ANY DISCREPANCIES IS TO BE REFERRED TO THE ARCHITECT PRIOR TO ANY MANUFACTURING. TO BE INSTALLED BY A COMPETENT CARPENTER. HOT DIPPED GALVANISED STEEL DOOR FRAMES PRE-PAINTED WITH REDOXIDE PAINT ON INTERNAL OF FRAME TO SUIT WALL THICKNESS OF 220MM AND 110MM. HOT DIPPED GALVANISING TO COMPLY WITH SANS 121:2011 AND HDGASA REGULATIONS - NOT PAINTED WITH 1.5 PAIR OF STAINLESS STEEL BALL BEARING HINGES WELDED IN POSITION. REFER TO IRONMONGERY SCHEDULES.

WINDOWS

STEEL WINDOWS AS PER WINDOW SCHEDULE. MANUFACTURING TO BE OF A SUPERIOR STANDARD. QUALITY AND APPROVED BY ARCHITECT. ALL DIMENSIONS AND LEVELS TO BE CHECKED ON SITE AND ANY DISCREPANCIES IS TO BE REFERRED TO THE ARCHITECT PRIOR TO ANY MANUFACTURING. HOT DIPPED GALVANISING TO COMPLY WITH SANS 121:2011 AND HDGASA REGULATIONS. ALL GLASS TO BE TOUGHENED SAFETY GLASS IN COMPLIANCE WITH SANS 10400-N. GLAZING COMPLIANCE CERTIFICATE TO BE PROVIDED.

CHALKBOARD

4800 X 1140MM GREEN CHALKBOARD TO COMPLY WITH CKS -38-1980 SUPPLIED COMPLETE WITH CHALK RAIL AS ONE UNIT. CHALKBOARD TO BE FIXED IN ACCORDANCE WITH MANUFACTURES INSTRUCTIONS.

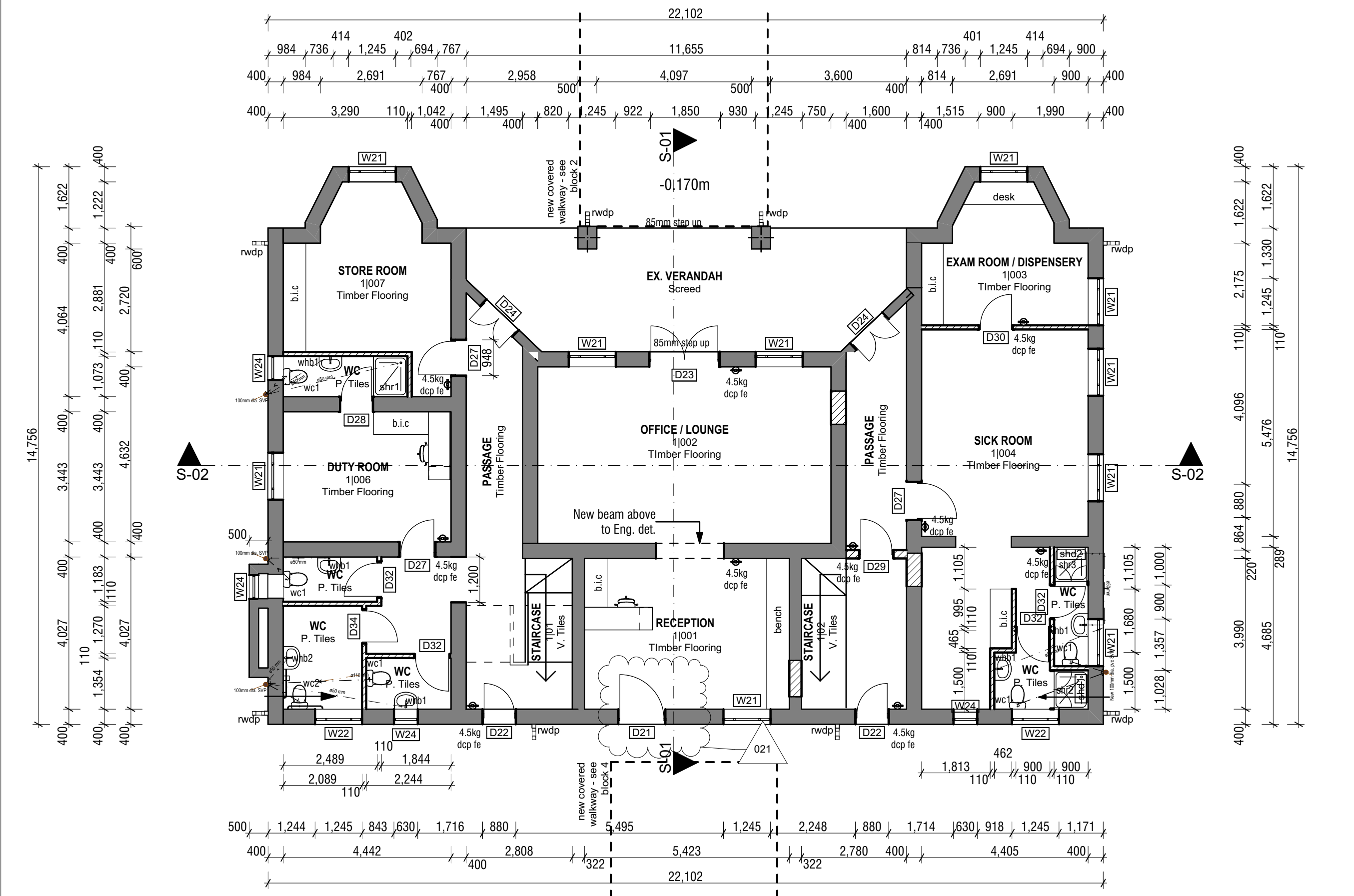
BALUSTRADES

1M HIGH HOT DIPPED GALVANIZED BALUSTRADE TO COMPLY WITH SANS 10400-M

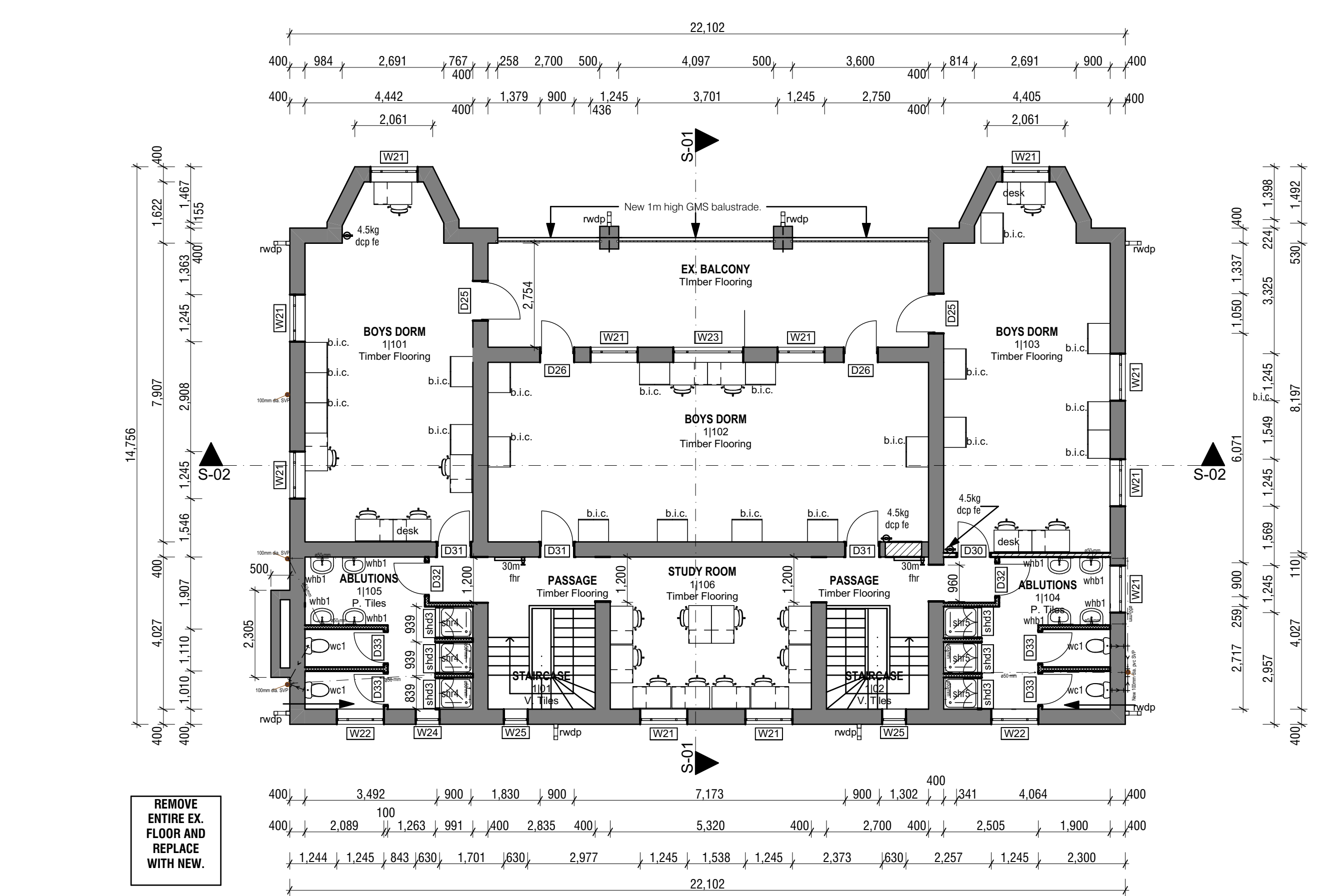
CEILING INSULATION

LAY 100MM AEROLITE INSULATION -NON-COMBUSTIBLE AND CLASS 1 FIRE INDEX RATING- ON THE CEILING ENSURING THAT IT FITS TIGHTLY BETWEEN THE BEAMS. AEROLITE SHOULD BE CUT 50MM MORE THAN DISTANCE BETWEEN THE TIE BEAMS. CUT AEROLITE OUTROUND DOWN LIGHTS. CUT AEROLITE OUT AROUND TRAP DOORS. FIX THE CUT SECTION TO THE BACK OF THE TRAP DOOR USING A GOOD QUALITY CONTACT ADHESIVE. WRAP AEROLITE AROUND COLD AND HOT WATER PIPES ENSURING THAT THERE IS 10MM OVERLAP. SECURE THE AEROLITE USING A CABLE THE AT300MM CENTRES.

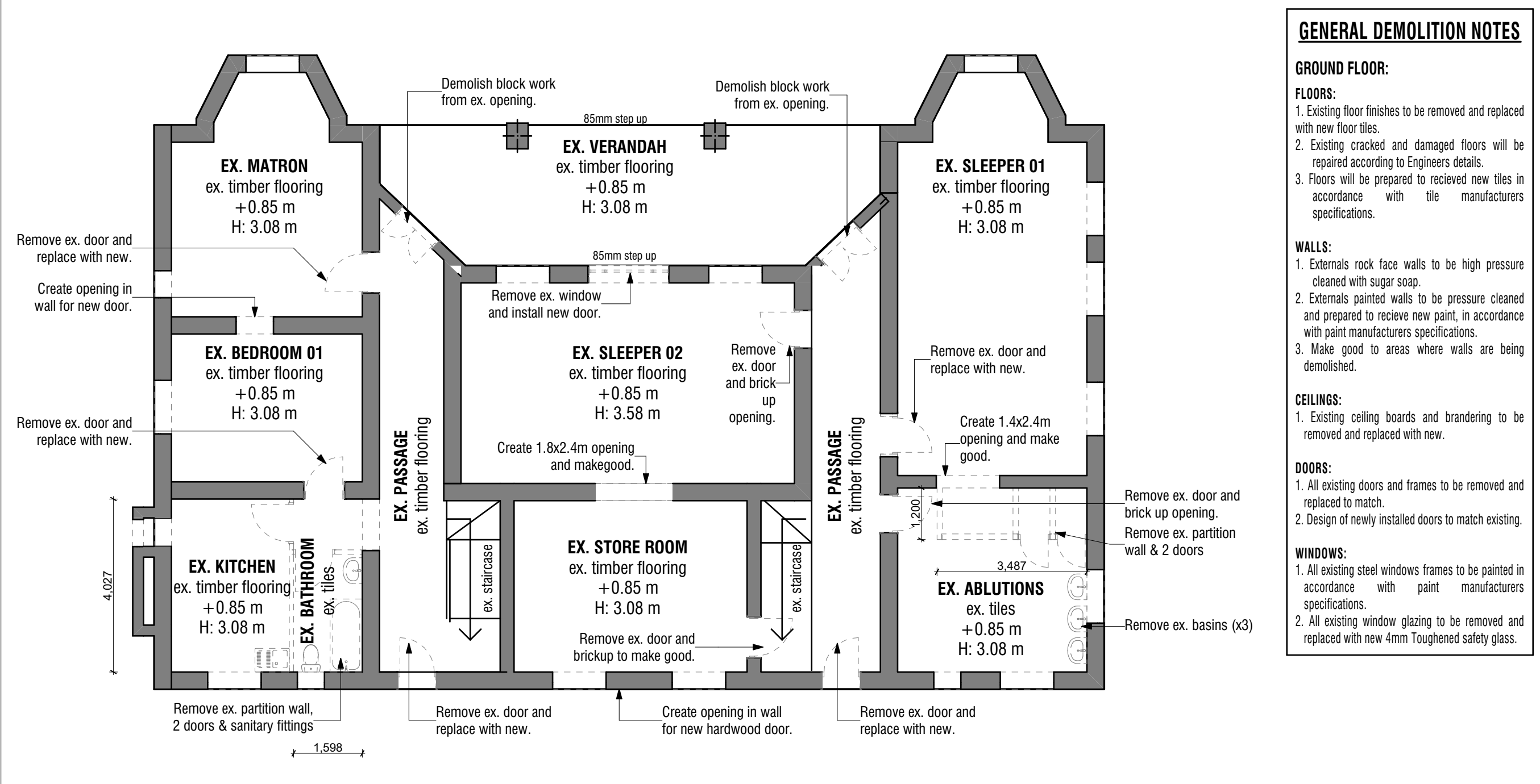
Block 1



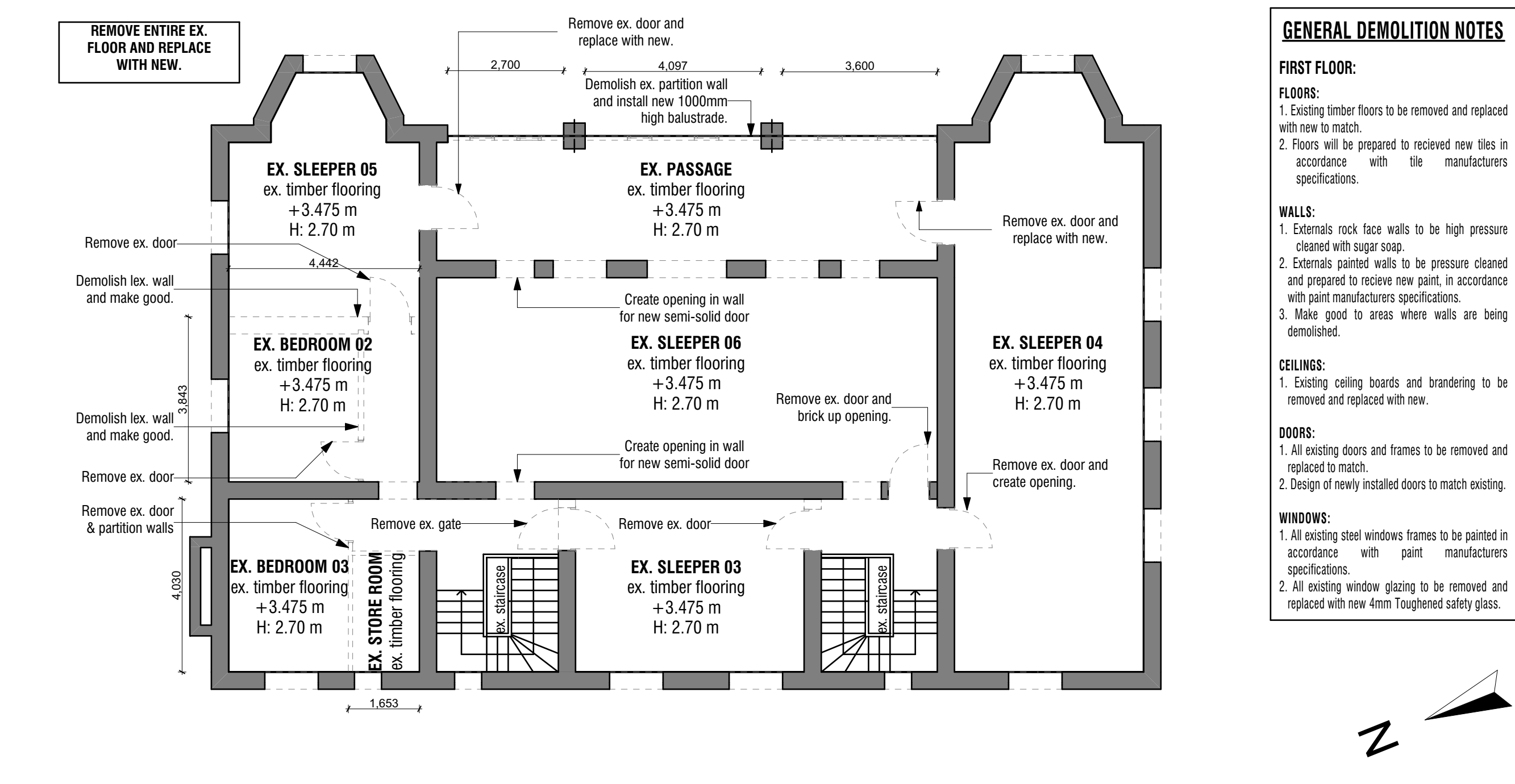
PROPOSED GROUND FLOOR | 1:100



PROPOSED FIRST FLOOR | 1:100



DEMOLITION PLAN: GROUND FLOOR | 1:100



DEMOLITION PLAN: FIRST FLOOR | 1:100

REV no.	DESCRIPTION	ISSUE DATE:
02	Revised Door and Window Position	10/16/2020
01		

Revisions
THIS DRAWING IS NOT TO BE SCALED. ONLY FIGURED DIMENSIONS ARE TO BE FOLLOWED. CONTRACTORS ARE TO CHECK ALL DIMENSIONS AND LEVELS BEFORE ANY WORK COMMENCES AND TO REFER ANY APPARENT DISCREPANCIES TO THE ARCHITECT. THIS DRAWING IS THE SOLE PROPERTY OF THE ARCHITECTS, AND MAY NOT BE COPIED OR REPRODUCED WITHOUT THE OWNER'S WRITTEN CONSENT. ©

Professional team

DESIGNSCAPE architects

ARCHITECT: MARLON NYAVO suite 3 | 3 rdyl vale crescent | rydall vale park | la lucia ridge
Reg No: 6628 | 031 566 1221 | 031 566 1223
info@descape.co.za | www.descape.co.za

client details

idt INDEPENDENT DEVELOPMENT TRUST
031 369 7400
kmg@idt.org.za

education DEPARTMENT OF EDUCATION KZN
031 369 7400
kmg@edt.org.za

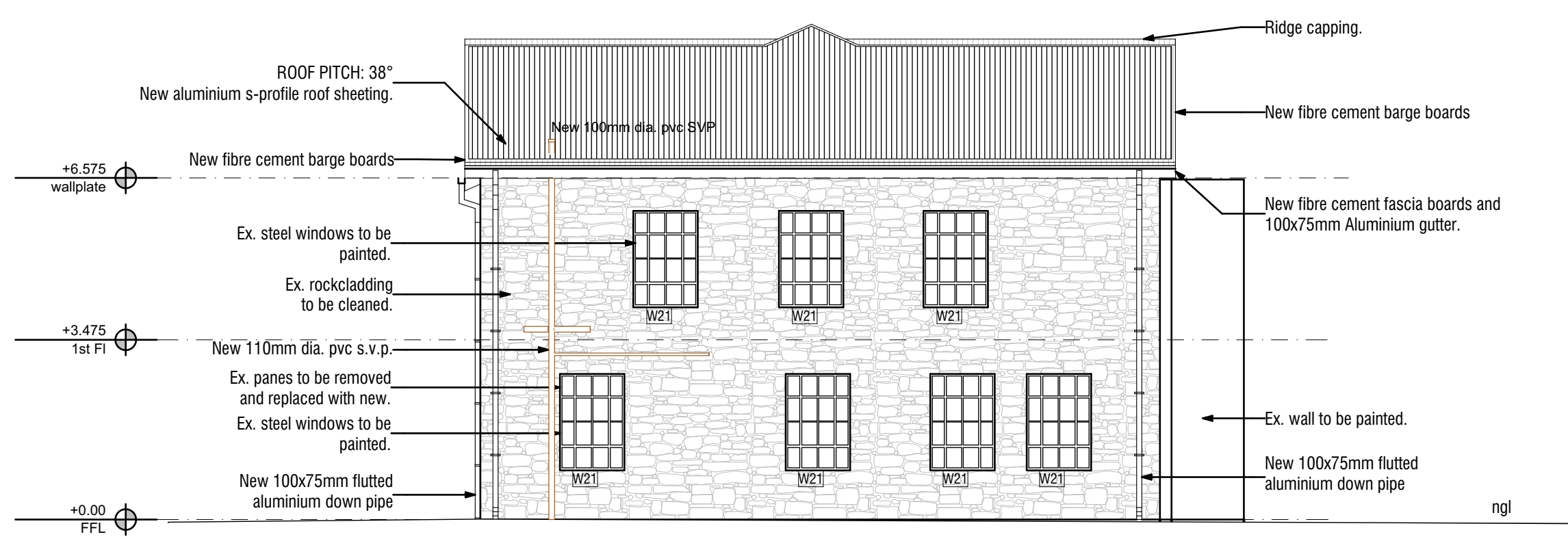
Project description
Proposed Additions and Alterations to Ohlange High School

EMIS NO: 286306

drawing description
Floor plans / Demolition Layouts

project file	SCALE
DRAWN BY MRA	1:100@A1
PUBLISH DATE: 10/16/2020	STATUS: IPAC
PROJECT No: D11.018J	REVISION: 02
	DRAWING No: 3.101

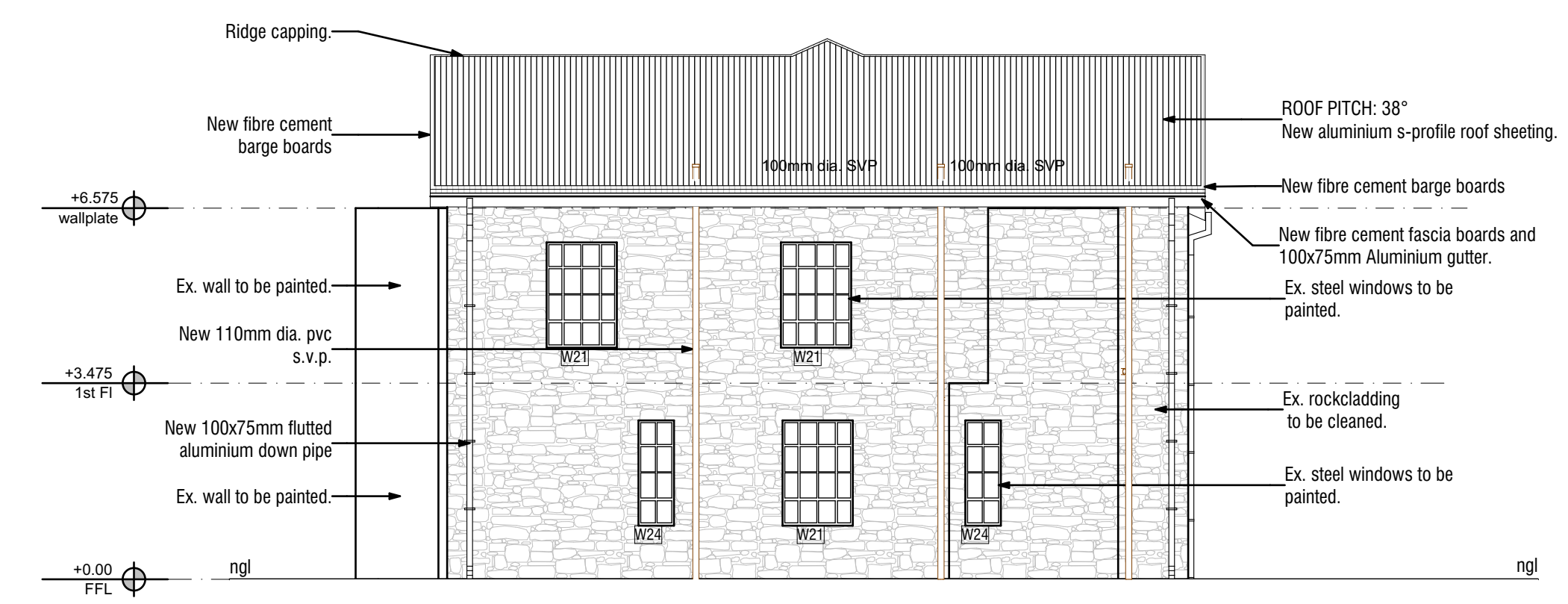
Block 1



SOUTH ELEVATION - 1:100



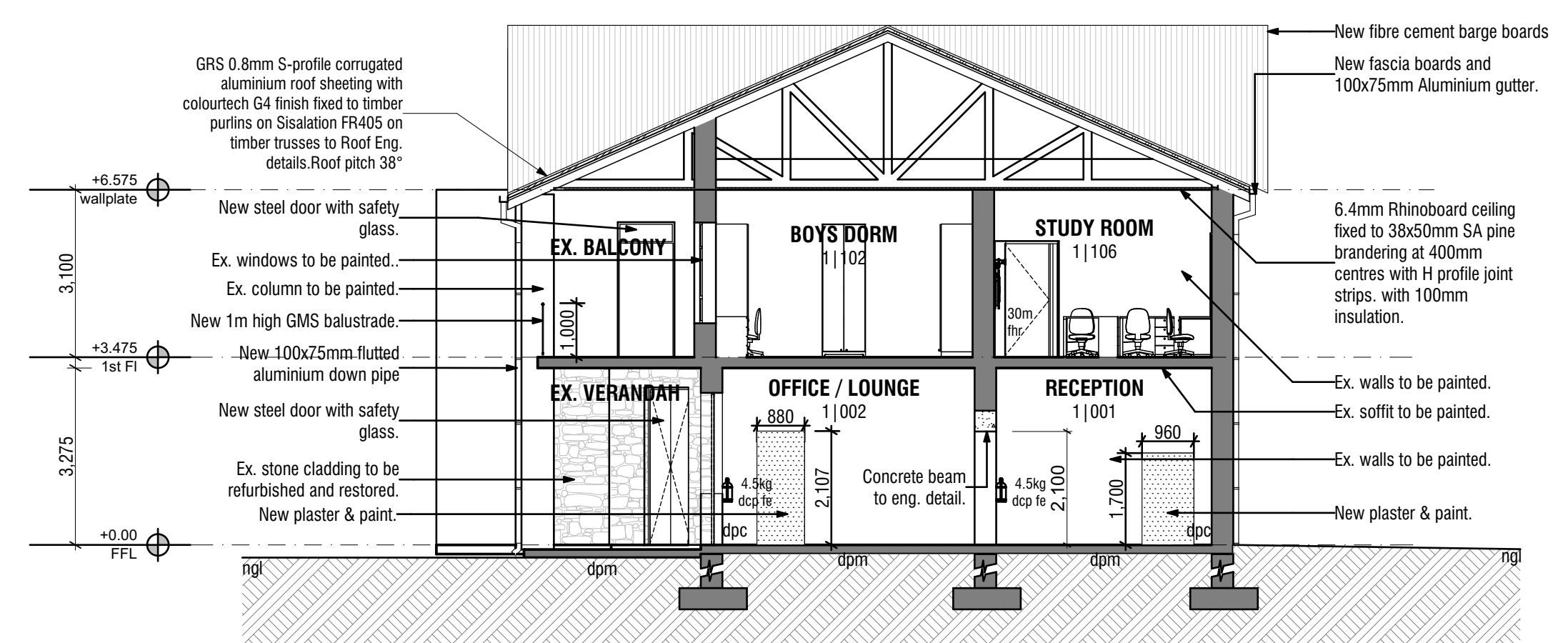
EAST ELEVATION - 1:100



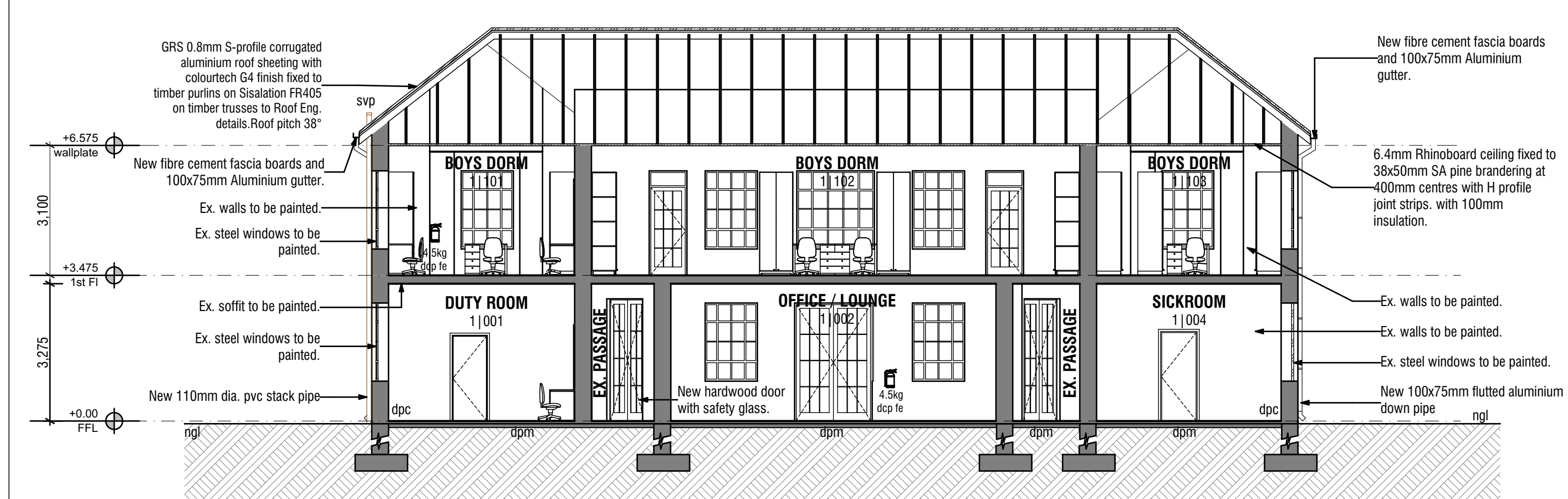
NORTH ELEVATION - 1:100



WEST ELEVATION - 1:100



SECTION 01 - 1:100



SECTION 02 - 1:100

REV no.	DESCRIPTION	ISSUE DATE:
02	Revised Door and Window Position	10/16/2020
01		

Revisions
 THIS DRAWING IS NOT TO BE SCALED. ONLY FIGURED DIMENSIONS ARE TO BE FOLLOWED. CONTRACTORS ARE TO CHECK ALL DIMENSIONS AND LEVELS BEFORE ANY WORK COMMENCES AND TO REFER ANY APPARENT DISCREPANCIES TO THE ARCHITECT. THIS DRAWING IS THE SOLE PROPERTY OF THE ARCHITECTS, AND MAY NOT BE COPIED OR REPRODUCED WITHOUT THE OWNER'S WRITTEN CONSENT. ©

DESIGNSCAPE architects
 ARCHITECT: MARLON NYAVOO suite 3 | 3 rydall vale crescent | rydall vale park | la lucia ridge | 031 566 1221 | 031 566 1223 | info@dscape.co.za | www.dscape.co.za
 Reg No: 0628

client details

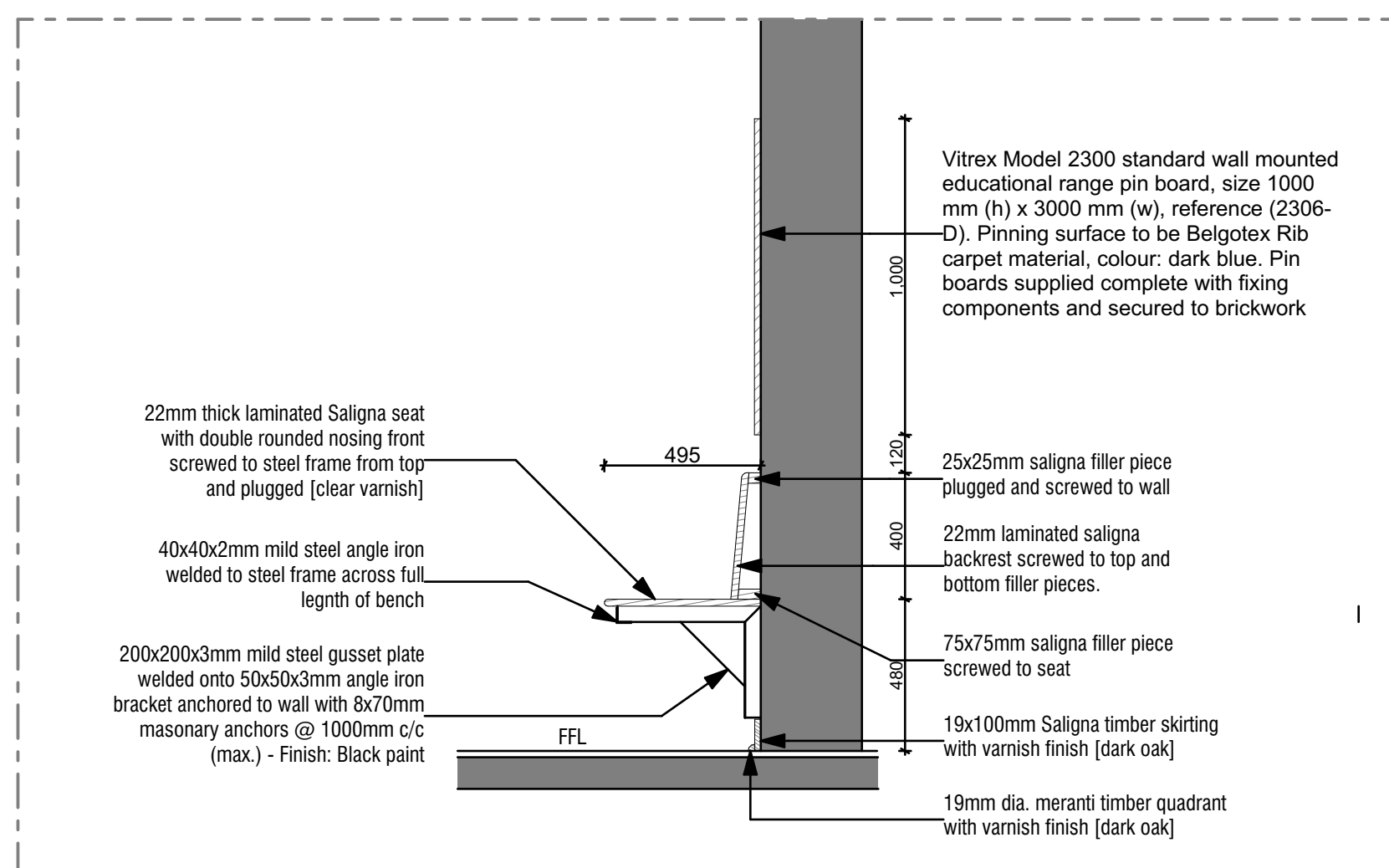
 INDEPENDENT DEVELOPMENT TRUST 031 369 7400 kzn@idt.org.za
 DEPARTMENT OF EDUCATION KZN

Project description
 Proposed Additions and Alterations to Ohlange High School
 EMIS NO: 286306

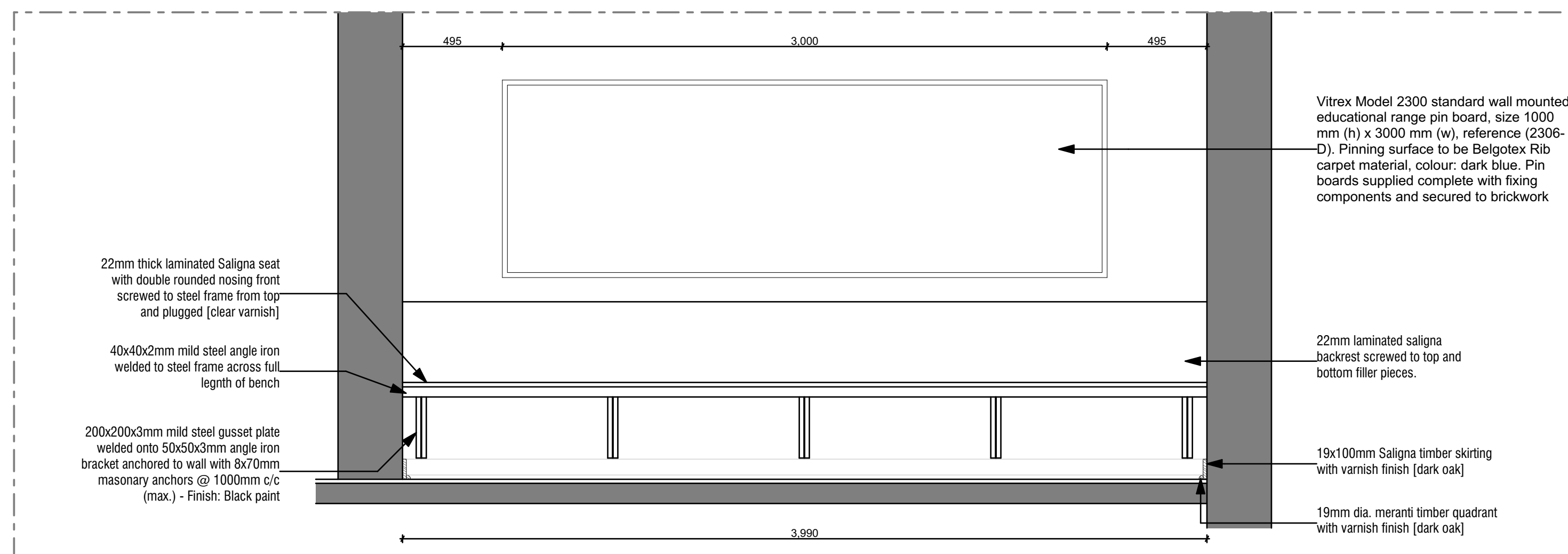
drawing description
 Sections / Elevations

project file	
DRAWN BY MRA	SCALE 1:100@A1
PUBLISH DATE: 10/16/2020	STATUS: IPAC
PROJECT No: D11.018J	REVISION: 02
	DRAWING No: 3.102

Block 1

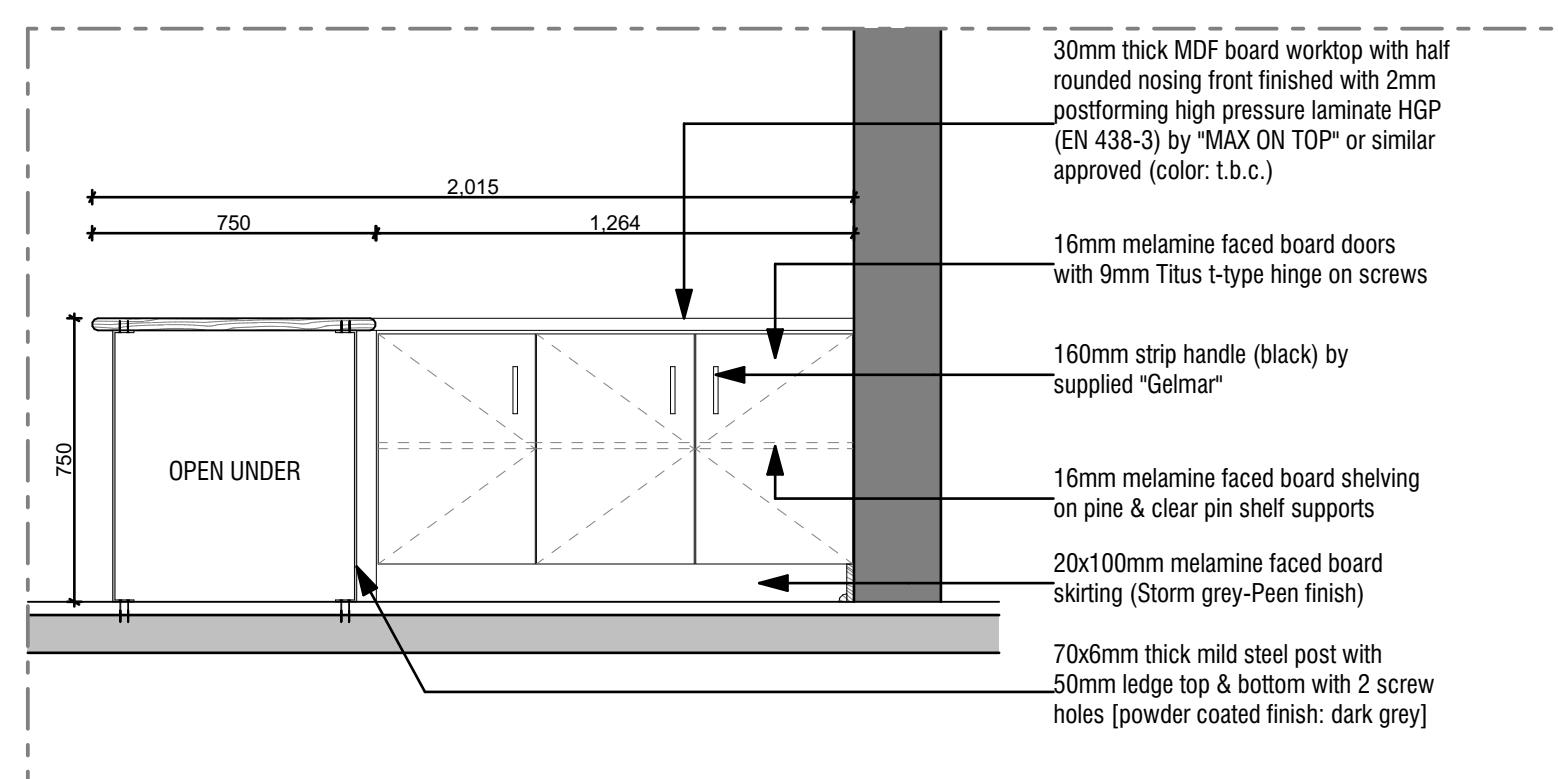


SECTION

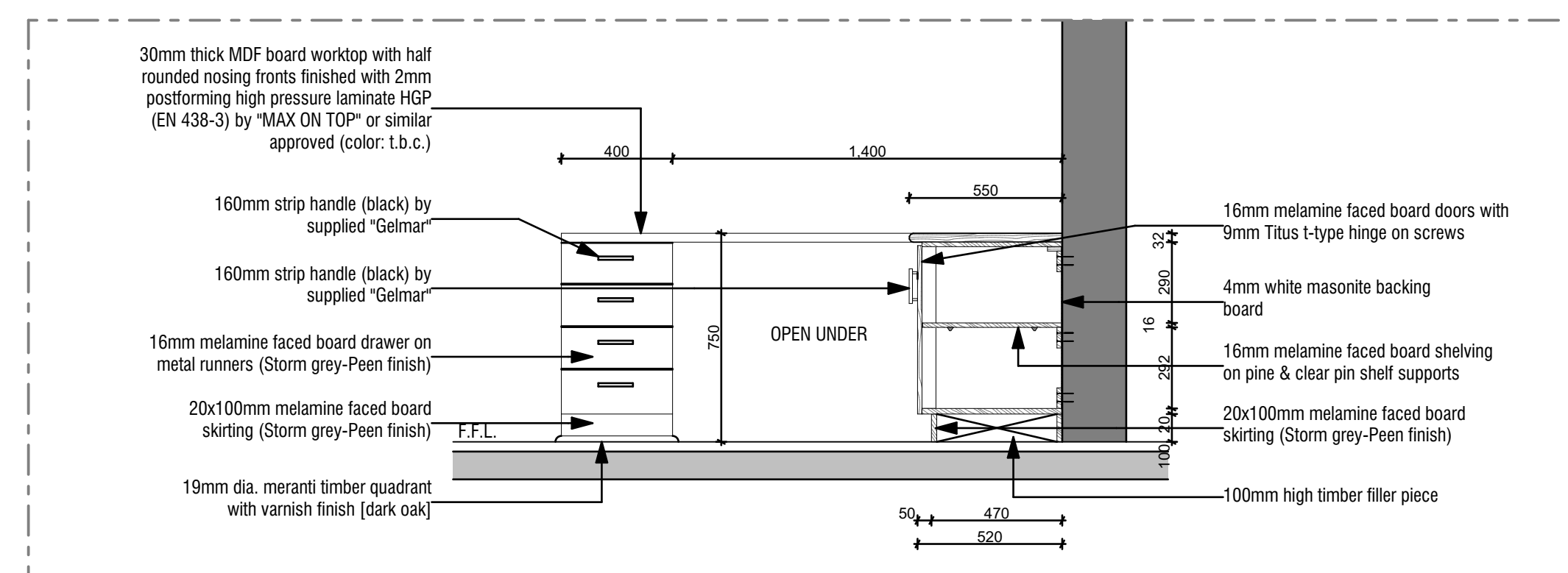


ELEVATION

DETAIL No. BENCH DETAIL	SCALE 1:20	DETAIL DESCRIPTION BENCH DETAIL : SECTION ELEVATION	LOCATION RECEPTION 1 001
----------------------------	---------------	--	-----------------------------

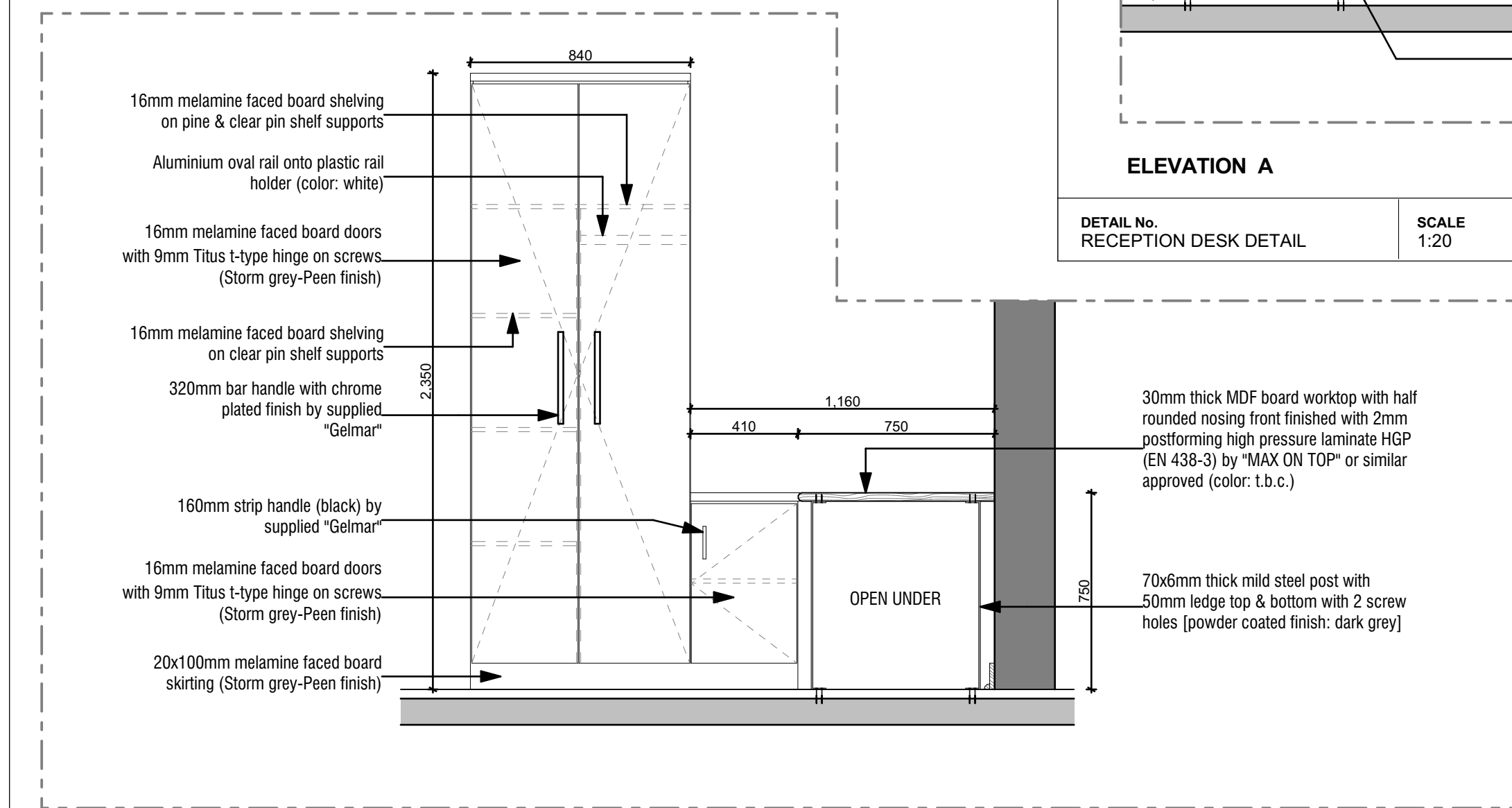


ELEVATION A

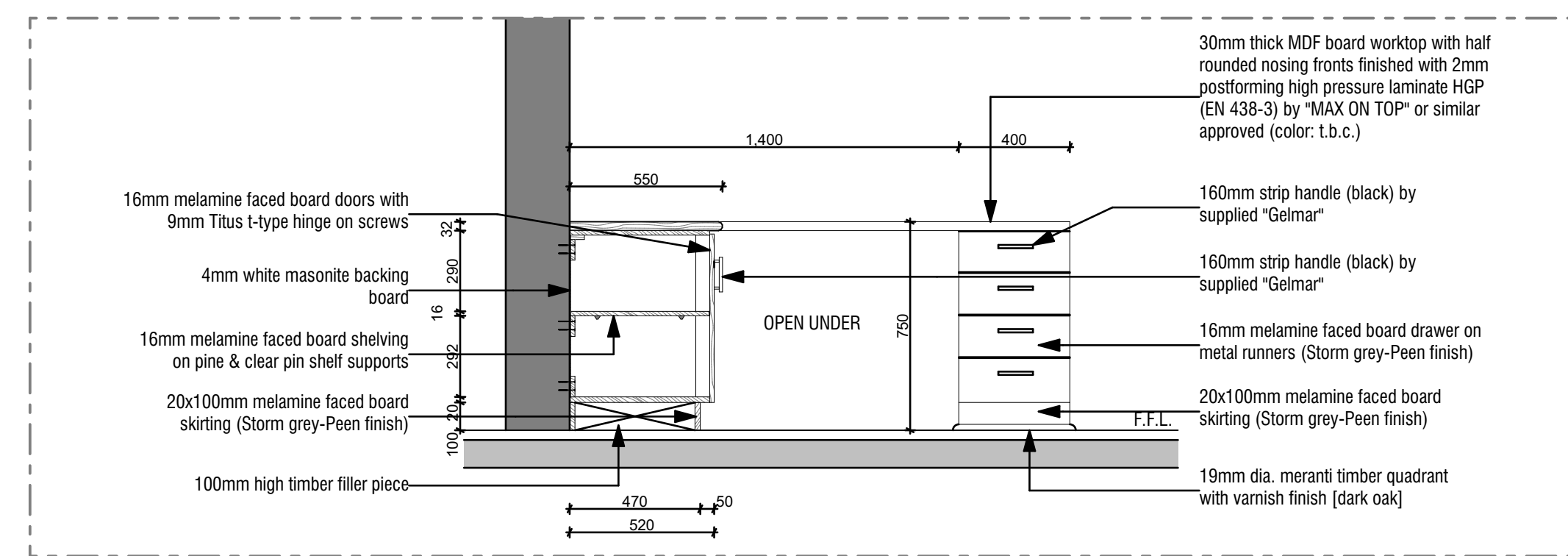


ELEVATION B

DETAIL No. RECEPTION DESK DETAIL	SCALE 1:20	DETAIL DESCRIPTION RECEPTION DESK DETAIL : ELEVATION A ELEVATION B	LOCATION RECEPTION 1 001
-------------------------------------	---------------	---	-----------------------------

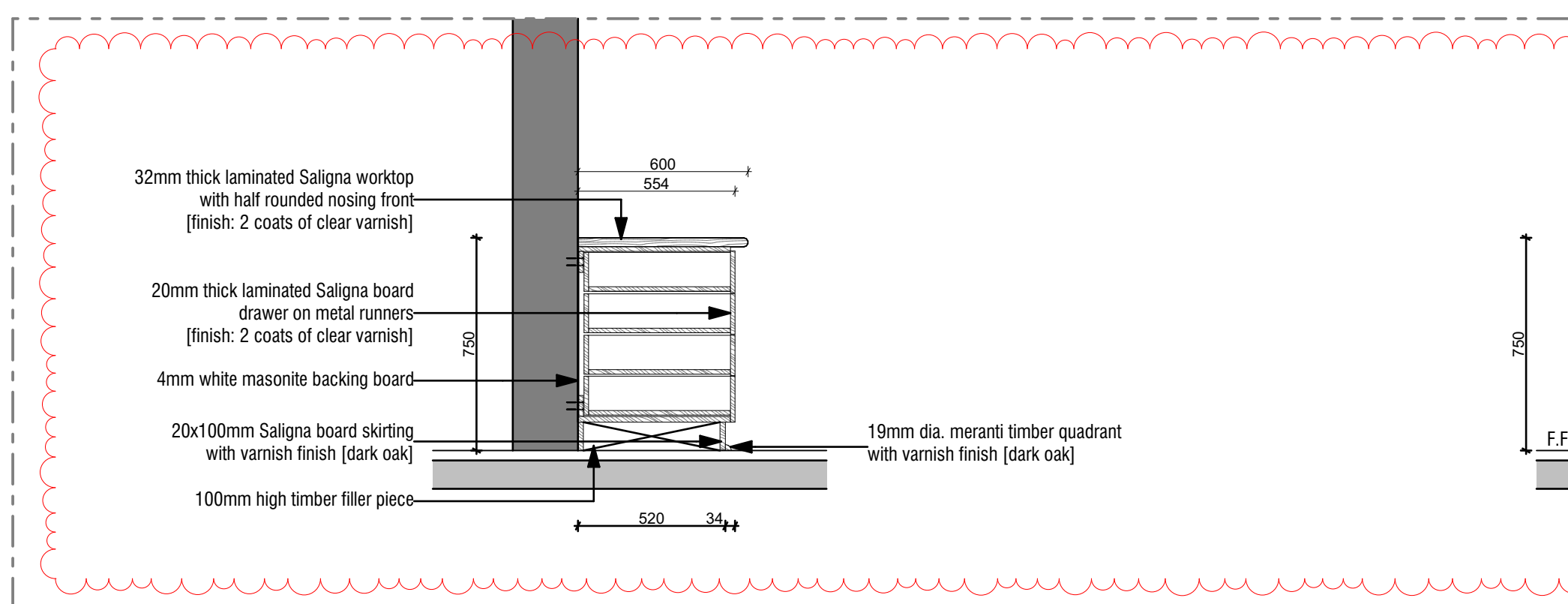


ELEVATION A

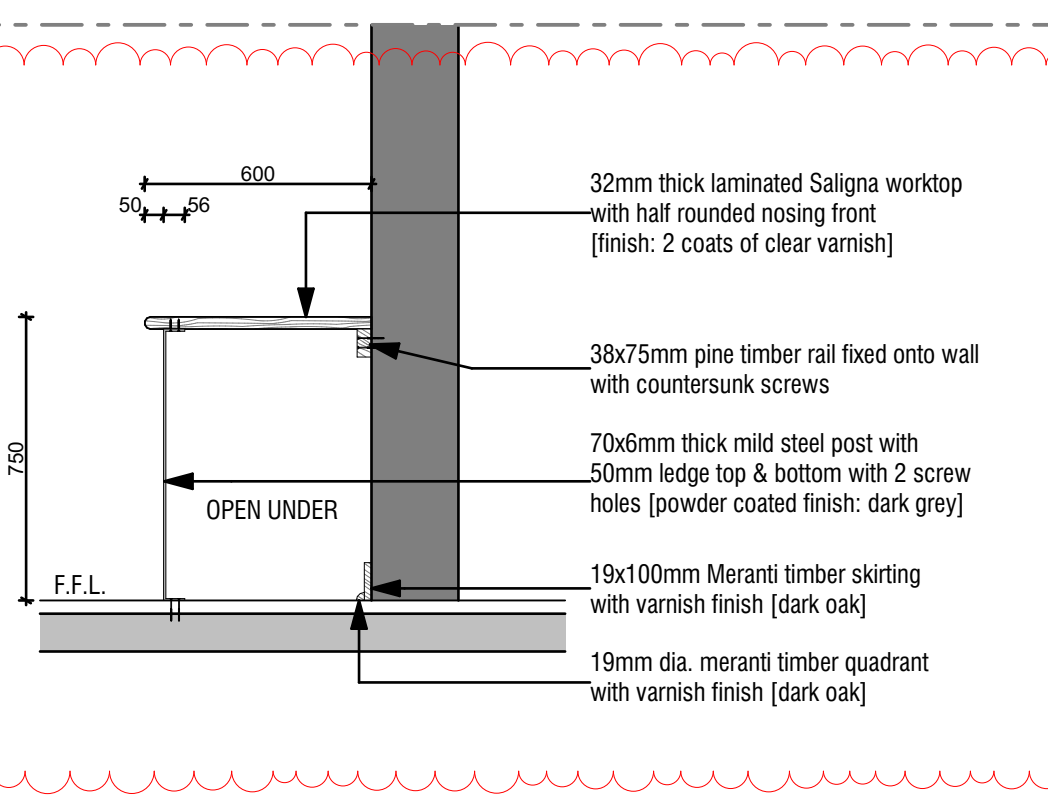


ELEVATION B

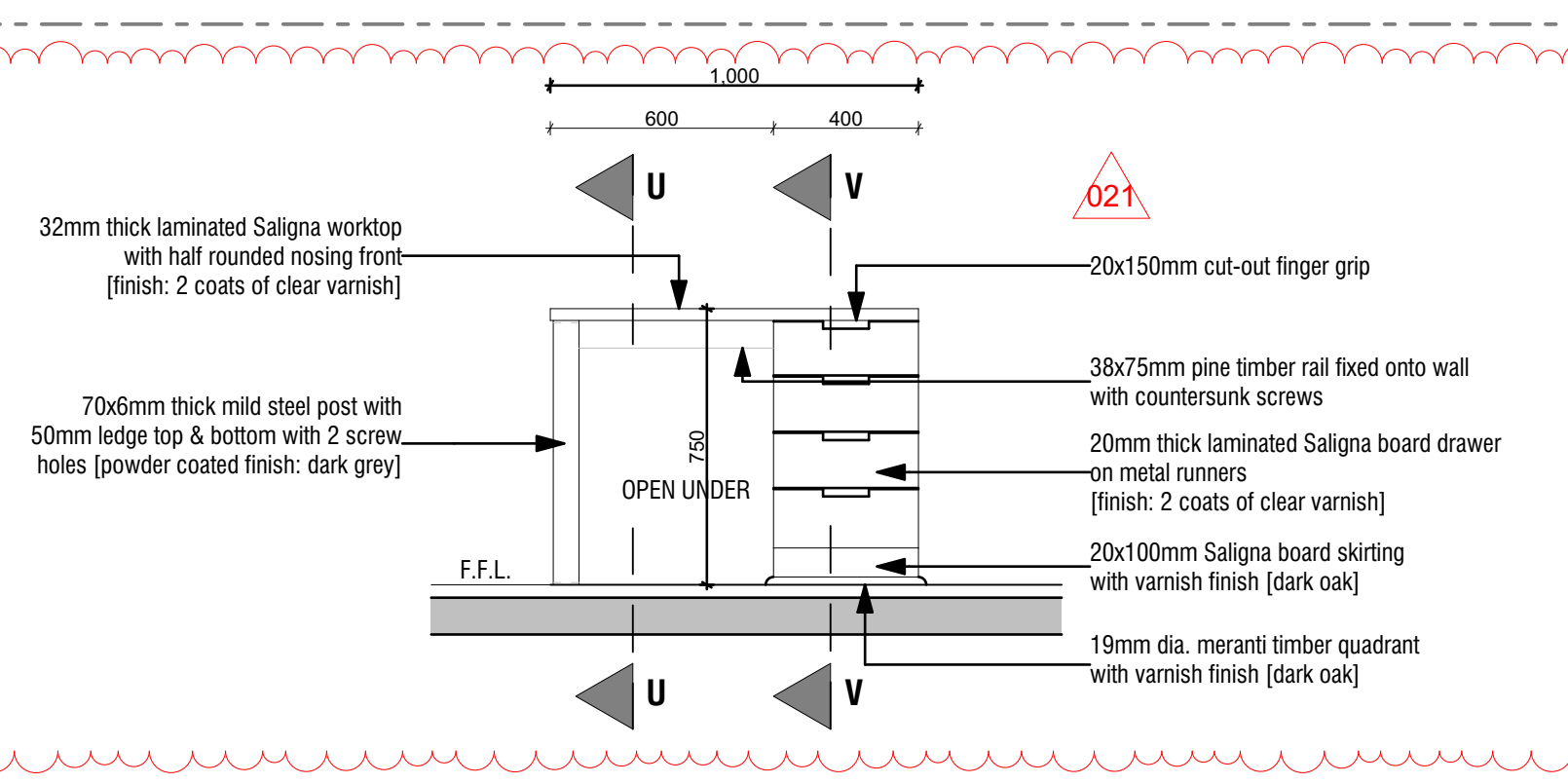
DETAIL No. DESK & CUPBOARD DETAIL	SCALE 1:20	DETAIL DESCRIPTION DESK & CUPBOARD DETAIL : ELEVATION A ELEVATION B	LOCATION DUTY ROOM 0 006
--------------------------------------	---------------	--	-----------------------------



SECTION V-V



SECTION U-U



ELEVATION

DETAIL No. STUDY DESK DETAIL	SCALE 1:20	DETAIL DESCRIPTION STUDY DESK DETAIL : SECTION V-V SECTION U-U ELEVATION	LOCATION BOYS DORMS 1 101; 1 102 & 1 103
---------------------------------	---------------	---	---

REV		
02	02	Type of timber
01		
REV no.	DESCRIPTION	ISSUE DATE: 10/16/2020
Revisions		
THIS DRAWING IS NOT TO BE SCALED. ONLY FIGURED DIMENSIONS ARE TO BE FOLLOWED. CONTRACTORS ARE TO CHECK ALL DIMENSIONS AND LEVELS BEFORE ANY WORK COMMENCES AND TO REFER ANY APPARENT DISCREPANCIES TO THE ARCHITECT. THIS DRAWING IS THE SOLE PROPERTY OF THE ARCHITECTS, AND MAY NOT BE COPIED OR REPRODUCED WITHOUT THE OWNER'S WRITTEN CONSENT. ©		
Professional team		
DESIGNSCAPE architects ARCHITECT: MARLON IVAYDO suite 3 3 rydall vale crescent rydall vale park la lucia ridge 031 566 1221 031 566 1223 info@dscape.co.za www.dscape.co.za Reg No: 0628		
client details		
INDEPENDENT DEVELOPMENT TRUST DEPARTMENT OF EDUCATION KZN 031 369 7400 031 369 7400 kzm@idtd.co.za kzm@ed.gov.za		
Project description		
Proposed Additions and Alterations to Ohlange High School		
EMIS NO: 286306		
drawing description		
Joinery Details Existing Boys Dorm Sheet 1/2		
project file		
DRAWN BY MRA	SCALE 1:20@A1	
PUBLISH DATE: 10/16/2020	STATUS: IPAC	
PROJECT No: D11.018J	REVISION: 02	DRAWING No: 5.101

Block 1

View from Opening Side	Element ID	Quantity	Location	W x H Size	Panel	Panel Finish	Frame	Frame Finish	Glazing	Ironmongery	General
	D21	1	Reception (Entrance)	1,245 x 2,815	Purpose made Hot dipped galvanised steel french doors. Manufactured using FX7 steel sections. Glazing to be fixed on internal side. By KZN Windows and Door frames or similar approved.	Prepare, apply one coat primer and two coats water based enamel paint by Plascon or similar approved. Refer to paint manufacturers specifications.	Purpose made Hot dipped galvanised steel frame. Manufactured using FX7 steel sections. Complete With Straps For Building In. 3x Hot dipped Galvanised parliament hinges as per manufacturers details. By KZN Windows and Door frames or similar approved.	Prepare, apply one coat primer and two coats water based enamel paint by Plascon or similar approved. Refer to paint manufacturers specifications.	4mm Clear toughened safety glass to comply with SANS 10400-N. Glazing to be fixed internally to frame with clear silicone sealant and with Nu-Glaze beading.	4 Lever lock with lever handles, 1.5 pair ss ball bearing hinges and accessories. Refer to Ironmongery Schedule.	All door and frames to be SABS approved and confirmed with Architect. All dimensions and levels to be checked on site and any discrepancies is to be referred to the Architect prior to any manufacturing. Hot dipped galvanising to comply with SANS 121:2011 and HDGASA regulations.
	D22	2	Passage (Entrance)	880 x 2,815	Purpose made Hot dipped galvanised steel french doors. Manufactured using FX7 steel sections. Glazing to be fixed on internal side. By KZN Windows and Door frames or similar approved.	Prepare, apply one coat primer and two coats water based enamel paint by Plascon or similar approved. Refer to paint manufacturers specifications.	Purpose made Hot dipped galvanised steel frame. Manufactured using FX7 steel sections. Complete With Straps For Building In. 3x Hot dipped Galvanised parliament hinges as per manufacturers details. By KZN Windows and Door frames or similar approved.	Prepare, apply one coat primer and two coats water based enamel paint by Plascon or similar approved. Refer to paint manufacturers specifications.	4mm Clear toughened safety glass to comply with SANS 10400-N. Glazing to be fixed internally to frame with clear silicone sealant and with Nu-Glaze beading.	4 Lever lock with lever handles, 1.5 pair ss ball bearing hinges and accessories. Refer to Ironmongery Schedule.	All door and frames to be SABS approved and confirmed with Architect. All dimensions and levels to be checked on site and any discrepancies is to be referred to the Architect prior to any manufacturing. Hot dipped galvanising to comply with SANS 121:2011 and HDGASA regulations.
	D23	1	Office / Lounge	1,850 x 2,815	Purpose made Hot dipped galvanised steel french doors. Manufactured using FX7 steel sections. Glazing to be fixed on internal side. By KZN Windows and Door frames or similar approved.	Prepare, apply one coat primer and two coats water based enamel paint by Plascon or similar approved. Refer to paint manufacturers specifications.	Purpose made Hot dipped galvanised steel frame. Manufactured using FX7 steel sections. Complete With Straps For Building In. 3x Hot dipped Galvanised parliament hinges as per manufacturers details. By KZN Windows and Door frames or similar approved.	Prepare, apply one coat primer and two coats water based enamel paint by Plascon or similar approved. Refer to paint manufacturers specifications.	4mm Clear toughened safety glass to comply with SANS 10400-N. Glazing to be fixed internally to frame with clear silicone sealant and with Nu-Glaze beading.	4 Lever lock with lever handles, 1.5 pair ss ball bearing hinges and accessories. Refer to Ironmongery Schedule.	All door and frames to be SABS approved and confirmed with Architect. All dimensions and levels to be checked on site and any discrepancies is to be referred to the Architect prior to any manufacturing. Hot dipped galvanising to comply with SANS 121:2011 and HDGASA regulations.
	D24	2	Passage	1,180 x 2,915	Purpose made Hot dipped galvanised steel french doors. Manufactured using FX7 steel sections. Glazing to be fixed on internal side. By KZN Windows and Door frames or similar approved.	Prepare, apply one coat primer and two coats water based enamel paint by Plascon or similar approved. Refer to paint manufacturers specifications.	Purpose made Hot dipped galvanised steel frame. Manufactured using FX7 steel sections. Complete With Straps For Building In. 3x Hot dipped Galvanised parliament hinges as per manufacturers details. By KZN Windows and Door frames or similar approved.	Prepare, apply one coat primer and two coats water based enamel paint by Plascon or similar approved. Refer to paint manufacturers specifications.	4mm Clear toughened safety glass to comply with SANS 10400-N. Glazing to be fixed internally to frame with clear silicone sealant and with Nu-Glaze beading.	4 Lever lock with lever handles, 1.5 pair ss ball bearing hinges and accessories. Refer to Ironmongery Schedule.	All door and frames to be SABS approved and confirmed with Architect. All dimensions and levels to be checked on site and any discrepancies is to be referred to the Architect prior to any manufacturing. Hot dipped galvanising to comply with SANS 121:2011 and HDGASA regulations.
	D25	2	Boys Dorm. Rooms	1,050 x 2,500	Purpose made Hot dipped galvanised steel french doors. Manufactured using FX7 steel sections. Glazing to be fixed on internal side. By KZN Windows and Door frames or similar approved.	Prepare, apply one coat primer and two coats water based enamel paint by Plascon or similar approved. Refer to paint manufacturers specifications.	Purpose made Hot dipped galvanised steel frame. Manufactured using FX7 steel sections. Complete With Straps For Building In. 3x Hot dipped Galvanised parliament hinges as per manufacturers details. By KZN Windows and Door frames or similar approved.	Prepare, apply one coat primer and two coats water based enamel paint by Plascon or similar approved. Refer to paint manufacturers specifications.	4mm Clear toughened safety glass to comply with SANS 10400-N. Glazing to be fixed internally to frame with clear silicone sealant and with Nu-Glaze beading.	4 Lever lock with lever handles, 1.5 pair ss ball bearing hinges and accessories. Refer to Ironmongery Schedule.	All door and frames to be SABS approved and confirmed with Architect. All dimensions and levels to be checked on site and any discrepancies is to be referred to the Architect prior to any manufacturing. Hot dipped galvanising to comply with SANS 121:2011 and HDGASA regulations.
	D26	2	Boys Dorm Room	900 x 2,493	Purpose made Hot dipped galvanised steel french doors. Manufactured using FX7 steel sections. Glazing to be fixed on internal side. By KZN Windows and Door frames or similar approved.	Prepare, apply one coat primer and two coats water based enamel paint by Plascon or similar approved. Refer to paint manufacturers specifications.	Purpose made Hot dipped galvanised steel frame. Manufactured using FX7 steel sections. Complete With Straps For Building In. 3x Hot dipped Galvanised parliament hinges as per manufacturers details. By KZN Windows and Door frames or similar approved.	Prepare, apply one coat primer and two coats water based enamel paint by Plascon or similar approved. Refer to paint manufacturers specifications.	4mm Clear toughened safety glass to comply with SANS 10400-N. Glazing to be fixed internally to frame with clear silicone sealant and with Nu-Glaze beading.	4 Lever lock with lever handles, 1.5 pair ss ball bearing hinges and accessories. Refer to Ironmongery Schedule.	All door and frames to be SABS approved and confirmed with Architect. All dimensions and levels to be checked on site and any discrepancies is to be referred to the Architect prior to any manufacturing. Hot dipped galvanising to comply with SANS 121:2011 and HDGASA regulations.
	D27	3	Duty Rm / Store Rm / Sick Rm	950 x 2,150	40mm 'Jumbo' Semi-solid flush panel door with 3.6mm commercial ply on both sides and two hardwood edge strips by 'Pelican' or similar approved.	Prepare, apply one coat primer and two coats water based enamel paint by Plascon or similar approved. Refer to paint manufacturers specifications.	Standard 1.2mm Double Rebated Galvanised Pressed Metal Frame for 400mm Plastered Wall. Complete With Straps For Building In. Stainless steel hinges and striker plates supplied by Main Contractor for fixing onto frame. Frame by KZN Window and Doors frames or similar approved.	Prepare, apply one coat primer and two coats water based enamel paint by Plascon or similar approved. Refer to paint manufacturers specifications.	N/A	4 Lever lock with lever handles, 1.5 pair ss ball bearing hinges and accessories. Refer to Ironmongery Schedule.	All door and frames to be SABS approved and confirmed with Architect. All dimensions and levels to be checked on site and any discrepancies is to be referred to the Architect prior to any manufacturing. Hot dipped galvanising to comply with SANS 121:2011 and HDGASA regulations. Guarantees to be provided.
	D28	1	WC (Duty Room)	813 x 2,032	40mm 'Jumbo' Semi-solid flush panel door with 3.6mm commercial ply on both sides and two hardwood edge strips by 'Pelican' or similar approved.	Prepare, apply one coat primer and two coats water based enamel paint by Plascon or similar approved. Refer to paint manufacturers specifications.	Standard 1.2mm Double Rebated Galvanised Pressed Metal Frame for 400mm Plastered Wall. Complete With Straps For Building In. Stainless steel hinges and striker plates supplied by Main Contractor for fixing onto frame. Frame by KZN Window and Doors frames or similar approved.	Prepare, apply one coat primer and two coats water based enamel paint by Plascon or similar approved. Refer to paint manufacturers specifications.	N/A	4 Lever lock with lever handles, 1.5 pair ss ball bearing hinges and accessories. Refer to Ironmongery Schedule.	All door and frames to be SABS approved and confirmed with Architect. All dimensions and levels to be checked on site and any discrepancies is to be referred to the Architect prior to any manufacturing. Hot dipped galvanising to comply with SANS 121:2011 and HDGASA regulations. Guarantees to be provided.
	D29	1	Passage	900 x 2,150	40mm 'Jumbo' Semi-solid flush panel door with 3.6mm commercial ply on both sides and two hardwood edge strips by 'Pelican' or similar approved.	Prepare, apply one coat primer and two coats water based enamel paint by Plascon or similar approved. Refer to paint manufacturers specifications.	Standard 1.2mm Double Rebated Galvanised Pressed Metal Frame for 220mm Plastered Wall. Complete With Straps For Building In. Stainless steel hinges and striker plates supplied by Main Contractor for fixing onto frame. Frame by KZN Window and Doors frames or similar approved.	Prepare, apply one coat primer and two coats water based enamel paint by Plascon or similar approved. Refer to paint manufacturers specifications.	N/A	4 Lever lock with lever handles, 1.5 pair ss ball bearing hinges and accessories. Refer to Ironmongery Schedule.	All door and frames to be SABS approved and confirmed with Architect. All dimensions and levels to be checked on site and any discrepancies is to be referred to the Architect prior to any manufacturing. Hot dipped galvanising to comply with SANS 121:2011 and HDGASA regulations. Guarantees to be provided.
	D30	2	Exam Rm & Dispensary / Boys Dorm. Room	900 x 2,150	40mm 'Jumbo' Semi-solid flush panel door with 3.6mm commercial ply on both sides and two hardwood edge strips by 'Pelican' or similar approved.	Prepare, apply one coat primer and two coats water based enamel paint by Plascon or similar approved. Refer to paint manufacturers specifications.	Standard 1.2mm Double Rebated Galvanised Pressed Metal Frame for 110mm Plastered Wall. Complete With Straps For Building In. Stainless steel hinges and striker plates supplied by Main Contractor for fixing onto frame. Frame by KZN Window and Doors frames or similar approved.	Prepare, apply one coat primer and two coats water based enamel paint by Plascon or similar approved. Refer to paint manufacturers specifications.	N/A	4 Lever lock with lever handles, 1.5 pair ss ball bearing hinges and accessories. Refer to Ironmongery Schedule.	All door and frames to be SABS approved and confirmed with Architect. All dimensions and levels to be checked on site and any discrepancies is to be referred to the Architect prior to any manufacturing. Hot dipped galvanising to comply with SANS 121:2011 and HDGASA regulations. Guarantees to be provided.

View from Opening Side	Element ID	Quantity	Location	W x H Size	Panel	Panel Finish	Frame	Frame Finish	Glazing	Ironmongery	General
	D31	3	Boys Dorm. Rooms	900 x 2,150	40mm 'Jumbo' Semi-solid flush panel door with 3.6mm commercial ply on both sides and two hardwood edge strips by 'Pelican' or similar approved.	Prepare, apply one coat primer and two coats water based enamel paint by Plascon or similar approved. Refer to paint manufacturers specifications.	Standard 1.2mm Double Rebated Galvanised Pressed Metal Frame for 400mm Plastered Wall. Complete With Straps For Building In. Stainless steel hinges and striker plates supplied by Main Contractor for fixing onto frame. Frame by KZN Window and Doors frames or similar approved.	Prepare, apply one coat primer and two coats water based enamel paint by Plascon or similar approved. Refer to paint manufacturers specifications.	N/A	4 Lever lock with lever handles, 1.5 pair ss ball bearing hinges and accessories. Refer to Ironmongery Schedule.	All door and frames to be SABS approved and confirmed with Architect. All dimensions and levels to be checked on site and any discrepancies is to be referred to the Architect prior to any manufacturing. Hot dipped galvanising to comply with SANS 121:2011 and HDGASA regulations. Guarantees to be provided.
	D32	6	WC / Ablutions	900 x 2,150	40mm 'Jumbo' Semi-solid flush panel door with 3.6mm commercial ply on both sides and two hardwood edge strips by 'Pelican' or similar approved.	Prepare, apply one coat primer and two coats water based enamel paint by Plascon or similar approved. Refer to paint manufacturers specifications.	Standard 1.2mm Double Rebated Galvanised Pressed Metal Frame for 110mm Plastered Wall. Complete With Straps For Building In. Stainless steel hinges and striker plates supplied by Main Contractor for fixing onto frame. Frame by KZN Window and Doors frames or similar approved.	Prepare, apply one coat primer and two coats water based enamel paint by Plascon or similar approved. Refer to paint manufacturers specifications.	N/A	Dead Lock with Pull handle, Door Closer, Push plate etc, 1.5 pair ss ball bearing hinges and accessories. Refer to Ironmongery Schedule.	All door and frames to be SABS approved and confirmed with Architect. All dimensions and levels to be checked on site and any discrepancies is to be referred to the Architect prior to any manufacturing. Hot dipped galvanising to comply with SANS 121:2011 and HDGASA regulations. Guarantees to be provided.
	D33	4	WC Cubicles	813 x 2,032	40mm 'Jumbo' Semi-solid flush panel door with 3.6mm commercial ply on both sides and two hardwood edge strips by 'Pelican' or similar approved.	Prepare, apply one coat primer and two coats water based enamel paint by Plascon or similar approved. Refer to paint manufacturers specifications.	Standard 1.2mm Double Rebated Galvanised Pressed Metal Frame for 110mm Plastered Wall. Complete With Straps For Building In. Stainless steel hinges and striker plates supplied by Main Contractor for fixing onto frame. Frame by KZN Window and Doors frames or similar approved.	Prepare, apply one coat primer and two coats water based enamel paint by Plascon or similar approved. Refer to paint manufacturers specifications.	N/A	Indicator bolt with Pull handle, Door Closer, Push plate etc, 1.5 pair ss ball bearing hinges and accessories. Refer to Ironmongery Schedule.	All door and frames to be SABS approved and confirmed with Architect. All dimensions and levels to be checked on site and any discrepancies is to be referred to the Architect prior to any manufacturing. Hot dipped galvanising to comply with SANS 121:2011 and HDGASA regulations.
	D34	1	P.WC	900 x 2,150	40mm 'Jumbo' Semi-solid flush panel door with 3.6mm commercial ply on both sides and two hardwood edge strips by 'Pelican' or similar approved.	Prepare, apply one coat primer and two coats water based enamel paint by Plascon or similar approved. Refer to paint manufacturers specifications.	Standard 1.2mm Double Rebated Galvanised Pressed Metal Frame for 110mm Plastered Wall. Complete With Straps For Building In. Stainless steel hinges and striker plates supplied by Main Contractor for fixing onto frame. Frame by KZN Window and Doors frames or similar approved.	Prepare, apply one coat primer and two coats water based enamel paint by Plascon or similar approved. Refer to paint manufacturers specifications.	N/A	Dead Lock with Pull handle, Door Closer, Push plate etc, 1.5 pair ss ball bearing hinges and accessories. Refer to Ironmongery Schedule.	All door and frames to be SABS approved and confirmed with Architect. All dimensions and levels to be checked on site and any discrepancies is to be referred to the Architect prior to any manufacturing. Hot dipped galvanising to comply with SANS 121:2011 and HDGASA regulations. Guarantees to be provided.
	shd1	1	Wc	1,028 x 1,808	8mm Compact High Pressure Laminate saloon doors. To be 100% water resistant and robust by cubicle solutions or similar approved.	Finished by manufacturer.	Saloon door keep and frames by manufacturer.	Finished by manufacturer.	N/A	Finished by manufacturer.	To be installed in accordance with manufacturers specifications.
	shd2	1	WC	900 x 1,808	8mm Compact High Pressure Laminate saloon doors. To be 100% water resistant and robust by cubicle solutions or similar approved.	Finished by manufacturer.	Saloon door keep and frames by manufacturer.	Finished by manufacturer.	N/A	Finished by manufacturer.	To be installed in accordance with manufacturers specifications.
	shd3	6	Ablutions	839 x 1,808	8mm Compact High Pressure Laminate saloon doors. To be 100% water resistant and robust by cubicle solutions or similar approved.	Finished by manufacturer.	Saloon door keep and frames by manufacturer.	Finished by manufacturer.	N/A	Finished by manufacturer.	To be installed in accordance with manufacturers specifications.

021

REV		
02	02	Shower doors included
01		
REV no.	DESCRIPTION	ISSUE DATE: 10/16/2020
by: _____		
Revisions		
THIS DRAWING IS NOT TO BE SCALED. ONLY FIGURED DIMENSIONS ARE TO BE FOLLOWED. CONTRACTORS ARE TO CHECK ALL DIMENSIONS AND LEVELS BEFORE ANY WORK COMMENCES AND TO REFER ANY APPARENT DISCREPANCIES TO THE ARCHITECT. THIS DRAWING IS THE SOLE PROPERTY OF THE ARCHITECTS, AND MAY NOT BE COPIED OR REPRODUCED WITHOUT THE OWNER'S WRITTEN CONSENT. ©		
Professional team		
ARCHITECT: MARLON IVAYVO Reg No: 0628 suite 3 3 rydall vale crescent rydall vale park la lucia ridge T: 031 566 1221 031 566 1223 info@dscape.co.za www.dscape.co.za		
client details		
INDEPENDENT DEVELOPMENT TRUST 031 389 7400 kzm@idt.org.za		
DEPARTMENT OF EDUCATION KZN 031 389 7400 kzm@edt.org.za		
project description		
Proposed Additions and Alterations to Ohlange High School		
EMIS NO: 286306		
drawing description		
Door Schedules		
project file		
DRAWN BY	SCALE	
MRA	1:1@A1	
PUBLISH DATE:	STATUS:	
10/16/2020	IPAC	
PROJECT No:	REVISION:	DRAWING No:
D11.018J	02	7.101

Block 1

Sanitary Schedule									
2D Plan Preview									
Element ID	shr1	shr2	shr3	shr4	shr5	wc1	wc2	whb1	whb2
Location	En-suites / Baths / Ablutions	En-suites / Baths / Ablutions	En-suites / Baths / Ablutions	En-suites / Baths / Ablutions	En-suites / Baths / Ablutions	En-suites / Baths / Ablutions	Disable Wc	En-suites / Baths / Ablutions	Disable Wc
Quantity	1	1	1	3	3	9	1	13	1
Product code	In-situ	In-situ	In-situ	In-situ	In-situ	VAA-750600WH	VAA-750600WH	VAA-703102WH	VAA-702303WH
Description	100mm high Built up Shower floor, laid to a fall with Mosaic tiles.	100mm high Built up Shower floor, laid to a fall with Mosaic tiles.	100mm high Built up Shower floor, laid to a fall with Mosaic tiles.	100mm high Built up Shower floor, laid to a fall with Mosaic tiles.	100mm high Built up Shower floor, laid to a fall with Mosaic tiles.	Vaal Afsan Toilets - Low-Level - White Notes: Low level 90° outlet wash-down pan. DPE B2 seat recommended. 460mm x 360mm x 390mm	Vaal - Afsan - Toilets - Low-Level - White Notes: Low level 90° outlet wash-down pan. DPE B2 seat recommended. 460mm x 360mm x 390mm	Vaal - Springbok - Basins - Wall-Hung - White Notes: Rectangular Springbok basin with two tapholes, integrated overflow and chain stay hole. 400mm x 550mm x 270mm	VAA-702303WH Vaal - Hibiscus - Basins - Wall-Hung - White Notes: Rounded wall-hung basin with three semipunctured tapholes, integrated overflow, and chain stay hole through the centre semi-punctured taphole. 510mm x 405mm x 130mm
Taps	COB-238-15 Cobra - Star Underwall Stop Taps - Chrome Notes: Star underwall stop tap, chrome-plated. Includes-15mm copper inlets, and sliding wall flange. SANS 226 Type 2, DZR brass, JASWIC-listed.	COB-238-15 Cobra - Star Underwall Stop Taps - Chrome Notes: Star underwall stop tap, chrome-plated. Includes-15mm copper inlets, and sliding wall flange. SANS 226 Type 2, DZR brass, JASWIC-listed.	COB-238-15 Cobra - Star Underwall Stop Taps - Chrome Notes: Star underwall stop tap, chrome-plated. Includes-15mm copper inlets, and sliding wall flange. SANS 226 Type 2, DZR brass, JASWIC-listed.	COB-238-15 Cobra - Star Underwall Stop Taps - Chrome Notes: Star underwall stop tap, chrome-plated. Includes-15mm copper inlets, and sliding wall flange. SANS 226 Type 2, DZR brass, JASWIC-listed.	COB-238-15 Cobra - Star Underwall Stop Taps - Chrome Notes: Star underwall stop tap, chrome-plated. Includes-15mm copper inlets, and sliding wall flange. SANS 226 Type 2, DZR brass, JASWIC-listed.	COB-FJ2-100 Cobra Junior Flush Valves & Connectors - Chrome Notes: Junior Flushmaster exposed flush valve, chrome. Includes: back entry, flush pipe, rubber pan connector, wall flange, rubber seat buffer, integral vacuum breaker, 1 control stop with integral non-return valve inlet, wall flange, & adjustable telescopic connection. SANS 1240. 675mm	COB-FM1-000 Cobra Flush Master Valves & Connectors - Chrome Notes: Standard Flushmaster toilet flush valve, exposed type, chrome. Includes: wall plate, non-hold open feature, integral vacuum breaker, 1 control stop with integral non-return valve inlet, wall flange, & adjustable telescopic connection. SANS 1240. 140mm	COB-KM2-101 Cobra - Taps - Metering Taps - Brushed Chrome Notes: Metering pillar tap, brushed chrome. Includes: self-closing, non-hold open, flow controller with a flow cycle of 1-20 seconds, 1/2 inch male inlet, backnut, washer, and streamline outlet. Excellent water-saving product. SANS 1808-9.	COB-503-218 Cobra - Medical - elbow actionTaps - Chrome Notes: Medical elbow-action pillar tap, chrome. Includes: 1/4 inch turn ceramic disc head part, blue indice, 1/2 inch BSP male inlet, and flanged backnut. Ideal for medical, kitchen and industrial installations. SANS 226 TYPE 2.
Accessories	COB-KP2-6 Cobra Vandalproof shower head; COB-373SQ Cobra - Wastes	COB-KP2-6 Cobra Vandalproof shower head; COB-373SQ Cobra - Wastes	COB-KP2-6 Cobra Vandalproof shower head; COB-373SQ Cobra - Wastes	COB-KP2-6 Cobra Vandalproof shower head; COB-373SQ Cobra - Wastes	COB-KP2-6 Cobra Vandalproof shower head; COB-373SQ Cobra - Wastes	VAA-85302000 Vaal - Embassy - Toilets - Seats - White / COB-832-10 Cobra - Angle Valves x1 - Chrome / CL-00102 - Lockable Solo TR2 toilet roll holders	COB-C-FM8-80 Cobra - Flush Master Extended handle flush valve, chrome. / COB-832-10 Cobra - Angle Valves x1 - Chrome / Franke Cistern & Flush Valve Back Rail CNTXBR 750 x 260-2510014 / Franke Paraplegic side rail CNTXPAR 2510012 / CL-00102 - Lockable Solo TR2 toilet roll holders	COB-0617CH Cobra Bottle trap, 32 x 40mm, chrome. / COB-P-303 Cobra Basin Wastes - Chrome / COB-832-10 Cobra - Angle Valves x1 - Chrome / VAA-81182000 Vaal Semi concealed Basins - Bracket - White / 1x 450x600mm / 1x mirror - 4mm silver glass mirrors fixed with plugs and silver dome screws-Size 450x600mm	COB-0617CH Cobra Bottle trap, 32 x 40mm, chrome. / COB-P-303 Cobra Basin Wastes - Chrome / COB-832-10 Cobra - Angle Valves x1 - Chrome / VAA-84482000 Vaal Basins Fixing Bolt Set 10mm - Set of 2 - Chrome / 1x mirror - 4mm silver glass mirrors fixed with plugs and silver dome screws-Size 450x900mm
General	All parts and accessories to be SABS approved and installed by a registered plumber. Plumbing certificate to be provided.	All parts and accessories to be SABS approved and installed by a registered plumber. Plumbing certificate to be provided.	All parts and accessories to be SABS approved and installed by a registered plumber. Plumbing certificate to be provided.	All parts and accessories to be SABS approved and installed by a registered plumber. Plumbing certificate to be provided.	All parts and accessories to be SABS approved and installed by a registered plumber. Plumbing certificate to be provided.	All parts and accessories to be SABS approved and installed by a registered plumber. Plumbing certificate to be provided.	All parts and accessories to be SABS approved and installed by a registered plumber. Plumbing certificate to be provided.	All parts and accessories to be SABS approved and installed by a registered plumber. Plumbing certificate to be provided.	All parts and accessories to be SABS approved and installed by a registered plumber. Plumbing certificate to be provided.

Window Schedule						
View from Opening Side						
Element ID	W21	W22	W23	W24	W25	
Quantity	21	4	1	5	2	
Location	Gr. Fl: Reception / Duty Room / Store rm / Exam & Dispensary / Sick rm; 1st Fl: Study / Boys Dorm. Rm.	Gr. Fl: WC's / P. WC; 1st Fl: Ablutions	1st Fl: Boys Dorm Room.	Gr. Fl: WC's / WC (Duty rm) / Sick Rm; ; 1st Fl: Ablutions	Staircase	
W x H Size	1,245x1,865	1,245x1,865	1,850x1,865	630x1,865	630x1,430	
Panel	Purpose made Hot dipped galvanised steel windows with Top hung and Fixed panel sections. Manufactured using FX7 steel sections. Glazing to be fixed on internal side. By KZN Windows and Door frames or similar approved.	Purpose made Hot dipped galvanised steel windows with Top hung and Fixed panel sections. Manufactured using FX7 steel sections. Glazing to be fixed on internal side. By KZN Windows and Door frames or similar approved.	Purpose made Hot dipped galvanised steel windows with Top hung and Fixed panel sections. Manufactured using FX7 steel sections. Glazing to be fixed on internal side. By KZN Windows and Door frames or similar approved.	Purpose made Hot dipped galvanised steel windows with Top hung and Fixed panel sections. Manufactured using FX7 steel sections. Glazing to be fixed on internal side. By KZN Windows and Door frames or similar approved.	Purpose made Hot dipped galvanised steel windows with Top hung and Fixed panel sections. Manufactured using FX7 steel sections. Glazing to be fixed on internal side. By KZN Windows and Door frames or similar approved.	Purpose made Hot dipped galvanised steel windows with Top hung and Fixed panel sections. Manufactured using FX7 steel sections. Glazing to be fixed on internal side. By KZN Windows and Door frames or similar approved.
Frame	Hot dipped galvanised steel window frame. Manufactured using FX7 steel sections. Complete With Straps For Building in. By KZN Windows and Door frames or similar approved.	Hot dipped galvanised steel window frame. Manufactured using FX7 steel sections. Complete With Straps For Building in. By KZN Windows and Door frames or similar approved.	Hot dipped galvanised steel window frame. Manufactured using FX7 steel sections. Complete With Straps For Building in. By KZN Windows and Door frames or similar approved.	Hot dipped galvanised steel window frame. Manufactured using FX7 steel sections. Complete With Straps For Building in. By KZN Windows and Door frames or similar approved.	Hot dipped galvanised steel window frame. Manufactured using FX7 steel sections. Complete With Straps For Building in. By KZN Windows and Door frames or similar approved.	Hot dipped galvanised steel window frame. Manufactured using FX7 steel sections. Complete With Straps For Building in. By KZN Windows and Door frames or similar approved.
Finish - Panel and Frame	Prepare, apply one coat primer and two coats water based enamel paint by Plascon or similar approved. Refer to paint manufacturers specifications	Prepare, apply one coat primer and two coats water based enamel paint by Plascon or similar approved. Refer to paint manufacturers specifications	Prepare, apply one coat primer and two coats water based enamel paint by Plascon or similar approved. Refer to paint manufacturers specifications	Prepare, apply one coat primer and two coats water based enamel paint by Plascon or similar approved. Refer to paint manufacturers specifications	Prepare, apply one coat primer and two coats water based enamel paint by Plascon or similar approved. Refer to paint manufacturers specifications	Prepare, apply one coat primer and two coats water based enamel paint by Plascon or similar approved. Refer to paint manufacturers specifications
Glazing	4mm Clear toughened safety glass to comply with SANS 10400-N. Glazing to be fixed internally to frame with clear silicone sealant and with Nu-Glaze beading.	4mm Clear toughened safety glass to comply with SANS 10400-N. Glazing to be fixed internally to frame with clear silicone sealant and with Nu-Glaze beading.	4mm Clear toughened safety glass to comply with SANS 10400-N. Glazing to be fixed internally to frame with clear silicone sealant and with Nu-Glaze beading.	4mm Opaque toughened safety glass to comply with SANS 10400-N. Glazing to be fixed internally to frame with clear silicone sealant and with Nu-Glaze beading.	4mm Clear toughened safety glass to comply with SANS 10400-N. Glazing to be fixed internally to frame with clear silicone sealant and with Nu-Glaze beading.	4mm Clear toughened safety glass to comply with SANS 10400-N. Glazing to be fixed internally to frame with clear silicone sealant and with Nu-Glaze beading.
Ironmongery	Brass handles, fittings and Steel hinges to be Supplied by Window Manufacturer.	Brass handles, fittings and Steel hinges to be Supplied by Window Manufacturer.	Brass handles, fittings and Steel hinges to be Supplied by Window Manufacturer.	Brass handles, fittings and Steel hinges to be Supplied by Window Manufacturer.	Brass handles, fittings and Steel hinges to be Supplied by Window Manufacturer.	Brass handles, fittings and Steel hinges to be Supplied by Window Manufacturer.
Burglar Bars	Factory fitted. 20x5mm Flat bar weld to window panels across glazing by Window Manufacturer.	Factory fitted. 20x5mm Flat bar weld to window panels across glazing by Window Manufacturer.	Factory fitted. 20x5mm Flat bar weld to window panels across glazing by Window Manufacturer.	Factory fitted. 20x5mm Flat bar weld to window panels across glazing by Window Manufacturer.	Factory fitted. 20x5mm Flat bar weld to window panels across glazing by Window Manufacturer.	Factory fitted. 20x5mm Flat bar weld to window panels across glazing by Window Manufacturer.
General Note	All Windows and frames to be approved and confirmed with Architect. All dimensions and levels to be checked on site and any discrepancies is to be referred to the Architect prior to any manufacturing. Hot dipped galvanising to comply with SANS 121:2011 and HDGASA regulations. .	All Windows and frames to be approved and confirmed with Architect. All dimensions and levels to be checked on site and any discrepancies is to be referred to the Architect prior to any manufacturing. Hot dipped galvanising to comply with SANS 121:2011 and HDGASA regulations. .	All Windows and frames to be approved and confirmed with Architect. All dimensions and levels to be checked on site and any discrepancies is to be referred to the Architect prior to any manufacturing. Hot dipped galvanising to comply with SANS 121:2011 and HDGASA regulations. .	All Windows and frames to be approved and confirmed with Architect. All dimensions and levels to be checked on site and any discrepancies is to be referred to the Architect prior to any manufacturing. Hot dipped galvanising to comply with SANS 121:2011 and HDGASA regulations. .	All Windows and frames to be approved and confirmed with Architect. All dimensions and levels to be checked on site and any discrepancies is to be referred to the Architect prior to any manufacturing. Hot dipped galvanising to comply with SANS 121:2011 and HDGASA regulations. .	All Windows and frames to be approved and confirmed with Architect. All dimensions and levels to be checked on site and any discrepancies is to be referred to the Architect prior to any manufacturing. Hot dipped galvanising to comply with SANS 121:2011 and HDGASA regulations. .

REV		
01		
REV no.	DESCRIPTION	
by:	ISSUE DATE: 10/16/2020	
Revisions		
THIS DRAWING IS NOT TO BE SCALED. ONLY FIGURED DIMENSIONS ARE TO BE FOLLOWED. CONTRACTORS ARE TO CHECK ALL DIMENSIONS AND LEVELS BEFORE ANY WORK COMMENCES AND TO REFER ANY APPARENT DISCREPANCIES TO THE ARCHITECT. THIS DRAWING IS THE SOLE PROPERTY OF THE ARCHITECTS, AND MAY NOT BE COPIED OR REPRODUCED WITHOUT THE OWNER'S WRITTEN CONSENT. ©		
Professional team		
 ARCHITECT: MARLON NYAVOO Reg No: 0628 suite 3 3 rydall vale crescent rydall vale park la lucia ridge 031 566 1221 031 566 1223 info@descape.co.za www.descape.co.za		
client details		
 INDEPENDENT DEVELOPMENT TRUST 031 369 7400 kzm@idt.org.za DEPARTMENT OF EDUCATION KZN		
project description		
Proposed Additions and Alterations to Ohlange High School		
EMIS NO: 286306		
drawing description		
Window & Sanitary Schedule		
project file		
DRAWN BY	SCALE	
MRA	1:1@A1	
PUBLISH DATE:	STATUS:	
10/16/2020	IPAC	
PROJECT No:	REVISION:	DRAWING No:
D11.018J	01	7.102